

KCC

AUG 13 2003

CONFIDENTIAL CONFIDENTIAL ORIGINAL



TRILOBITE TESTING, INC.

RECEIVED
AUG 18 2003
KCC WICHITA

DRILL STEM TEST REPORT

Prepared For: **Castelli Explo.**

6908 NW 112th St
Oklahoma City, OK 73162

ATTN: Kevin Davis

18 33s 16w Comanche

White 1-18

Start Date: 2003.05.30 @ 03:34:40

End Date: 2003.05.30 @ 13:38:25

Job Ticket #: 17847 DST #: 1

RELEASED
FROM
CONFIDENTIAL

Trilobite Testing, Inc

PO Box 362 Hays, KS 67601

ph: 785-625-4778 fax: 785-625-5620

Castelli Explo.

White 1-18

18 33s 16w Comanche

DST # 1

Miss

2003.05.30

CONFIDENTIAL

ORIGINAL



TRIOBITE TESTING, INC.

DRILL STEM TEST REPORT

Castelli Explo.
6908 NW 112th St
Oklahoma City, OK 73162
ATTN: Kevin Davis

White 1-18
18 33s 16w Comanche
Job Ticket: 17847 DST#: 1
Test Start: 2003.05.30 @ 03:34:40

GENERAL INFORMATION:

Formation: **Miss**
Deviated: **No** Whipstock: ft (KB)
Time Tool Opened: 06:07:55
Time Test Ended: 13:38:25
Interval: **5004.00 ft (KB) To 5050.00 ft (KB) (TVD)**
Total Depth: **5050.00 ft (KB) (TVD)**
Hole Diameter: **7.79 inches** Hole Condition: Fair

KCC

AUG 13 2003

CONFIDENTIAL

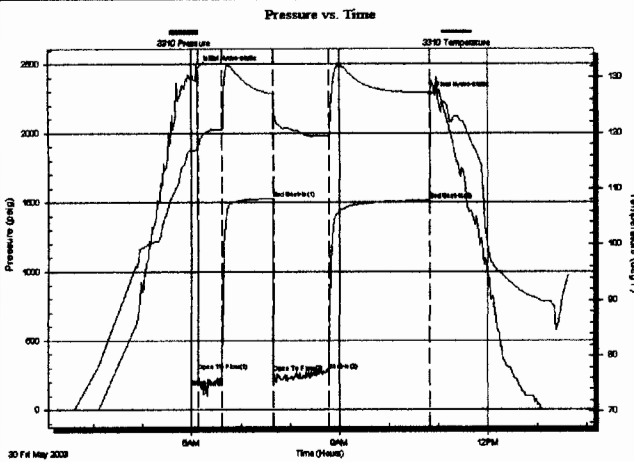
Test Type: Conventional Bottom Hole
Tester: Wenrich
Unit No: 24
Reference Elevations: 1853.00 ft (KB)
1840.00 ft (CF)
KB to GR/CF: 13.00 ft

Serial #: 3310

Inside

Press@RunDepth: 278.20 psig @ 5005.00 ft (KB) Capacity: 7000.00 psig
Start Date: 2003.05.30 End Date: 2003.05.30 Last Calib.: 1899.12.30
Start Time: 03:34:45 End Time: 13:38:25 Time On Btm: 2003.05.30 @ 06:06:55
Time Off Btm: 2003.05.30 @ 10:50:10

TEST COMMENT: IF:Strong blow.BOB in 30 secs.GTS in 6 mins.(see gas report)
IS:No blow.
FF:Strong blow.BOB immediately.(see gas report)
FSI:Blow down f/40 mins.Strong blow.BOB in 1.5 mins.



PRESSURE SUMMARY

Time (Min.)	Pressure (psig)	Temp (deg F)	Annotation
0	2467.36	117.09	Initial Hydro-static
1	278.00	117.37	Open To Flow(1)
31	221.74	120.65	Shut-In(1)
92	1526.72	127.06	End Shut-In(1)
93	267.48	123.43	Open To Flow(2)
161	278.20	119.54	Shut-In(2)
283	1515.46	127.29	End Shut-In(2)
284	2278.26	127.44	Final Hydro-static

Recovery

Length (ft)	Description	Volume (bbi)
270.00	ogcm 15%g 30%o 55%m	2.10
120.00	gcmo 25%g 45%o 30%m	1.68
360.00	o 100%	5.05

Gas Rates

	Choke (inches)	Pressure (psig)	Gas Rate (Mc/d)
First Gas Rate	0.50	24.00	259.04
Last Gas Rate	0.75	10.00	381.12
Max. Gas Rate	0.50	38.00	353.47



**TRILOBITE
TESTING, INC.**

DRILL STEM TEST REPORT

TOOL DIAGRAM

Castelli Explo.
6908 NW 112th St
Oklahoma City, OK 73162
ATTN: Kevin Davis

White 1-18
18 33s 16w Comanche
Job Ticket: 17847 **DST#: 1**
Test Start: 2003.05.30 @ 03:34:40

Tool Information

Drill Pipe:	Length: 4814.00 ft	Diameter: 3.80 inches	Volume: 67.53 bbl	Tool Weight: 2100.00 lb
Heavy Wt. Pipe:	Length: 0.00 ft	Diameter: 0.00 inches	Volume: 0.00 bbl	Weight set on Packer: 20000.00 lb
Drill Collar:	Length: 185.00 ft	Diameter: 2.25 inches	Volume: 0.91 bbl	Weight to Pull Loose: 95000.00 lb
		Total Volume: 68.44 bbl		Tool Chased 0.00 ft
Drill Pipe Above KB:	20.00 ft			String Weight: Initial 70000.00 lb
Depth to Top Packer:	5004.00 ft			Final 75000.00 lb
Depth to Bottom Packer:	ft			
Interval between Packers:	46.00 ft			
Tool Length:	71.00 ft			
Number of Packers:	2	Diameter: 6.75 inches		
Tool Comments:				

Tool Description

Tool Description	Length (ft)	Serial No.	Position	Depth (ft)	Accum. Lengths
C.O. Sub	1.00			4980.00	
S.I. Tool	5.00			4985.00	
HMV	5.00			4990.00	
Jars	5.00			4995.00	
Safety Joint	0.00			4995.00	
Packer	4.00			4999.00	25.00 Bottom Of Top Packer
Packer	5.00			5004.00	
Stubb	1.00			5005.00	
Recorder	0.00	3310	Inside	5005.00	
Perforations	1.00			5006.00	
C.O. Sub	1.00			5007.00	
Blank Spacing	32.00			5039.00	
C.O. Sub	0.00			5039.00	
Perforations	9.00			5048.00	
Recorder	0.00	10242	Outside	5048.00	
Bullnose	2.00			5050.00	46.00 Bottom Packers & Anchor
Total Tool Length:	71.00				



**TRILOBITE
TESTING, INC.**

DRILL STEM TEST REPORT

FLUID SUMMARY

Castelli Explo.

White 1-18

6908 NW 112th St
Oklahoma City, OK 73162

18 33s 16w Comanche

Job Ticket: 17847

DST#: 1

ATTN: Kevin Davis

Test Start: 2003.05.30 @ 03:34:40

Mud and Cushion Information

Mud Type: Gel Chem

Cushion Type:

Oil API:

deg API

Mud Weight: 9.00 lb/gal

Cushion Length:

ft

Water Salinity:

ppm

Viscosity: 52.00 sec/qt

Cushion Volume:

bbl

Water Loss: 6.78 in³

Gas Cushion Type:

Resistivity: 0.00 ohm.m

Gas Cushion Pressure:

psig

Salinity: 3500.00 ppm

Filter Cake: 0.20 inches

Recovery Information

Recovery Table

Length ft	Description	Volume bbl
270.00	oqcm 15%g 30%o 55%m	2.102
120.00	oqcmo 25%g 45%o 30%m	1.683
360.00	o 100%	5.050

Total Length: 750.00ft Total Volume: 8.835 bbl

Num Fluid Samples: 0

Num Gas Bombs: 0

Serial #:

Laboratory Name:

Laboratory Location:

Recovery Comments:



**TRILOBITE
TESTING, INC.**

DRILL STEM TEST REPORT

GAS RATES

Castelli Explo.
6908 NW 112th St
Oklahoma City, OK 73162
ATTN: Kevin Davis

White 1-18
18 33s 16w Comanche
Job Ticket: 17847 **DST#: 1**
Test Start: 2003.05.30 @ 03:34:40

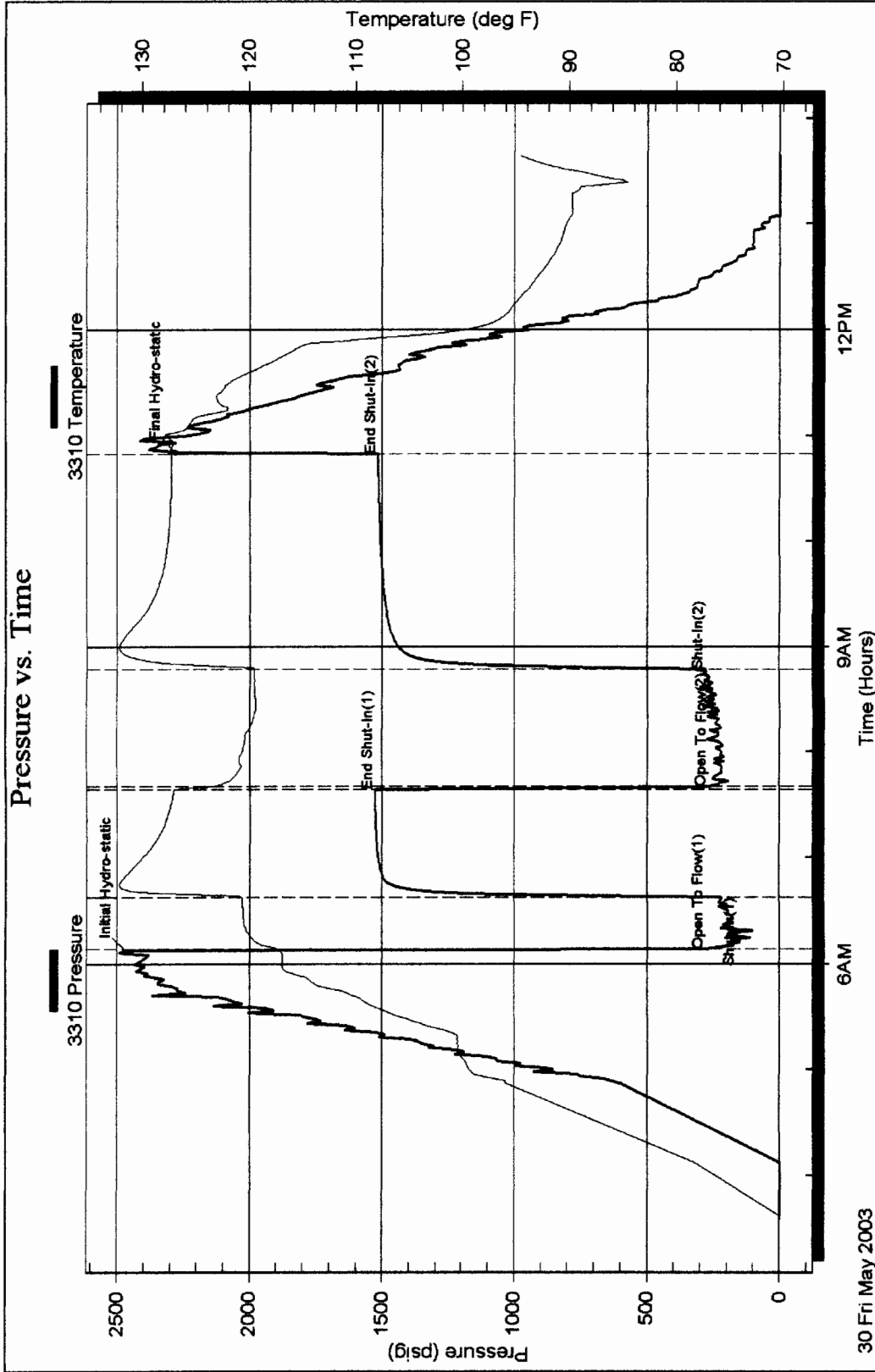
Gas Rates Information

Temperature: 59 deg C
Relative Density: 0.65
Z Factor: 0.8

Gas Rates Table

Flow Period	Elapsed Time	Choke (mm)	Pressure (kPaa)	Gas Rate (m ³ /d)
1	10	0.50	24.00	259.04
1	10	0.50	24.00	259.04
1	20	0.50	33.00	319.75
1	30	0.50	38.00	353.47
2	10	0.75	27.00	646.66
2	20	0.75	17.00	490.46
2	30	0.75	12.00	412.36
2	40	0.75	11.00	396.74
2	50	0.75	10.00	381.12
2	60	0.75	10.00	381.12

Pressure vs. Time



30 Fri May 2003