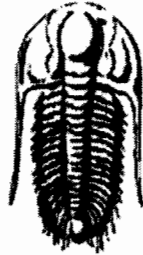


15-033-21367

RECEIVED
KANSAS CORPORATION COMMISSION

JAN 07 2004

CONSERVATION DIVISION
WICHITA, KS



**TRILOBITE
TESTING, INC.**

DRILL STEM TEST REPORT

Prepared For: **Castelli Explorations Inc**

8908 NW 112th St
Oklahoma City, Ok 73162

ATTN: Rick Pope

17-33s-16w Comanche

Gregg 1-17

Start Date: 2003.10.14 @ 15:49:53

End Date: 2003.10.14 @ 23:39:23

Job Ticket #: 17118 DST #: 2

Trilobite Testing, Inc

PO Box 362 Hays, KS 67601

ph: 785-625-4778 fax: 785-625-5620

Castelli Explorations Inc

Gregg 1-17

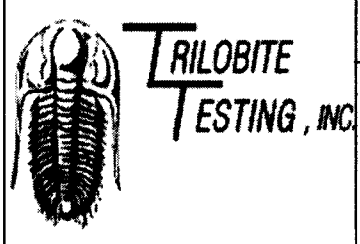
17-33s-16w Comanche

DST # 2

Lower Miss.

2003.10.14

RECEIVED
KANSAS CORPORATION COMMISSION
JAN 07 2004
CONSERVATION DIVISION
WICHITA, KS



DRILL STEM TEST REPORT

Castelli Explorations Inc
8908 NW 112th St
Oklahoma City, Ok 73162
ATTN: Rick Pope

Gregg 1-17
17-33s-16w Comanche
Job Ticket: 17118 **DST#: 2**
Test Start: 2003.10.14 @ 15:49:53

GENERAL INFORMATION:

Formation: **Lower Miss.**
Deviated: No Whipstock: ft (KB)
Time Tool Opened: 18:04:23
Time Test Ended: 23:39:23

Interval: **4953.00 ft (KB) To 4985.00 ft (KB) (TVD)**
Total Depth: 4985.00 ft (KB) (TVD)
Hole Diameter: 7.88 inches Hole Condition: Fair

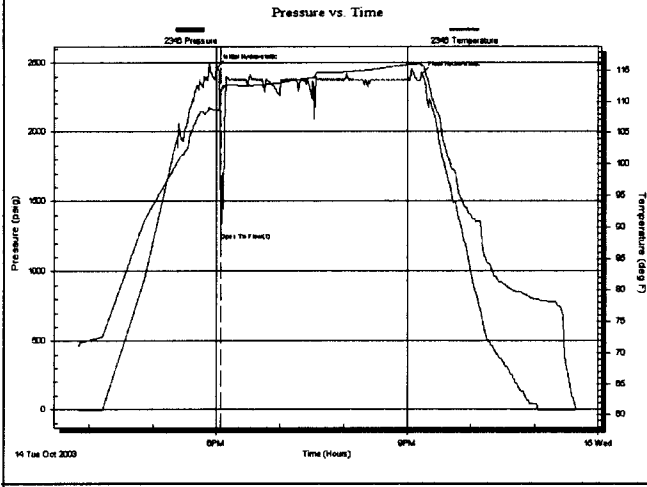
Test Type: Conventional Bottom Hole
Tester: Darren L. Amerine
Unit No: 19

Reference Elevations: 1827.00 ft (KB)
1814.00 ft (CF)
KB to GR/CF: 13.00 ft

Serial #: 2346

Press@RunDepth: psig @ ft (KB) Capacity: 7000.00 psig
Start Date: 2003.10.14 End Date: 2003.10.14 Last Calib.: 2003.10.14
Start Time: 15:49:55 End Time: 23:39:23 Time On Btm: 2003.10.14 @ 18:00:38
Time Off Btm: 2003.10.14 @ 21:13:23

TEST COMMENT: IF: Strong blow built to b.o.b in 20 sec. slowly died off to 3-1/2" in H2O bucket.
IS: Bled ndown for 5 mins. no blow back.
FF: Fair blow built to 7-1/2" in H2O bucket slowly died off to 3".
FS: Bled do



PRESSURE SUMMARY

| Time (Min.) | Pressure (psig) | Temp (deg F) | Annotation |
|-------------|-----------------|--------------|----------------------|
| 0 | 2466.79 | 108.64 | Initial Hydro-static |
| 4 | 1217.01 | 111.36 | Open To Flow(1) |
| 193 | 2418.49 | 115.71 | Final Hydro-static |

Recovery

| Length (ft) | Description | Volume (bbl) |
|-------------|----------------------|--------------|
| 1100.00 | SGCM 10% gas 90% mud | 15.43 |
| | | |
| | | |
| | | |
| | | |

Gas Rates

| | Choke (inches) | Pressure (psig) | Gas Rate (Mcf/d) |
|--|----------------|-----------------|------------------|
| | | | |
| | | | |
| | | | |



**TRILOBITE
TESTING, INC.**

DRILL STEM TEST REPORT

TOOL DIAGRAM

Castelli Explorations Inc
8908 NW 112th St
Oklahoma City, Ok 73162
ATTN: Rick Pope

Gregg 1-17
17-33s-16w Comanche
Job Ticket: 17118 **DST#: 2**
Test Start: 2003.10.14 @ 15:49:53

CONSERVATION DIVISION
WICHITA, KS

RECEIVED
KANSAS CORPORATION COMMISSION
JAN 07 2004

Tool Information

| | | | | |
|---------------------------|--------------------|-----------------------|--------------------------------|------------------------------------|
| Drill Pipe: | Length: 4955.00 ft | Diameter: 3.80 inches | Volume: 69.51 bbl | Tool Weight: 2100.00 lb |
| Heavy Wt. Pipe: | Length: 0.00 ft | Diameter: 0.00 inches | Volume: 0.00 bbl | Weight set on Packer: 20000.00 lb |
| Drill Collar: | Length: 0.00 ft | Diameter: 0.00 inches | Volume: 0.00 bbl | Weight to Pull Loose: 110000.0 lb |
| | | | Total Volume: 69.51 bbl | Tool Chased 0.00 ft |
| Drill Pipe Above KB: | 31.00 ft | | | String Weight: Initial 74000.00 lb |
| Depth to Top Packer: | 4953.00 ft | | | Final 79000.00 lb |
| Depth to Bottom Packer: | ft | | | |
| Interval between Packers: | 32.00 ft | | | |
| Tool Length: | 61.00 ft | | | |
| Number of Packers: | 2 | Diameter: 6.75 inches | | |

Tool Comments:

| Tool Description | Length (ft) | Serial No. | Position | Depth (ft) | Accum. Lengths |
|------------------|-------------|------------|----------|------------|------------------------------------|
| Change Over Sub | 1.00 | | | 4925.00 | |
| Shut In Tool | 5.00 | | | 4930.00 | |
| Hydraulic tool | 5.00 | | | 4935.00 | |
| Jars | 5.00 | | | 4940.00 | |
| Safety Joint | 3.00 | | | 4943.00 | |
| Packer | 5.00 | | | 4948.00 | 29.00 Bottom Of Top Packer |
| Packer | 5.00 | | | 4953.00 | |
| Stubb | 2.00 | | | 4955.00 | |
| Recorder | 0.00 | 2346 | Inside | 4955.00 | |
| Anchor | 27.00 | | | 4982.00 | |
| Recorder | 0.00 | 10991 | Outside | 4982.00 | |
| Bullnose | 3.00 | | | 4985.00 | 32.00 Bottom Packers & Anchor |

Total Tool Length: 61.00



**TRILOBITE
TESTING, INC.**

DRILL STEM TEST REPORT

FLUID SUMMARY

Castelli Explorations Inc
8908 NW 112th St
Oklahoma City, Ok 73162

ATTN: Rick Pope

Gregg 1-17
17-33s-16w Comanche
Job Ticket: 17118 **DST#: 2**
Test Start: 2003.10.14 @ 15:49:53

Mud and Cushion Information

| | | | |
|-----------------------------------|------------------------------|-----------------|---------|
| Mud Type: Gel Chem | Cushion Type: | Oil API: | deg API |
| Mud Weight: 9.00 lb/gal | Cushion Length: 9.00 | Water Salinity: | ppm |
| Viscosity: 47.00 sec/qt | Cushion Volume: 1100.00 | | |
| Water Loss: 11.99 in ³ | Gas Cushion Type: | | |
| Resistivity: ohm.m | Gas Cushion Pressure: 15.430 | | |
| Salinity: 4000.00 ppm | | | |
| Filter Cake: 0.32 inches | | | |

Recovery Information

Recovery Table

| Length ft | Description | Volume bbl |
|--------------|----------------------|---------------|
| 1100.00 | SGCM 10% gas 90% mud | 15.430 |

Total Length: 1100.00 ft Total Volume: 15.430 bbl
 Num Fluid Samples: 0 Num Gas Bombs: 0 Serial #:
 Laboratory Name: Laboratory Location:
 Recovery Comments:

RECEIVED
KANSAS CORPORATION COMMISSION
JAN 07 2004
CONSERVATION DIVISION
WICHITA, KS

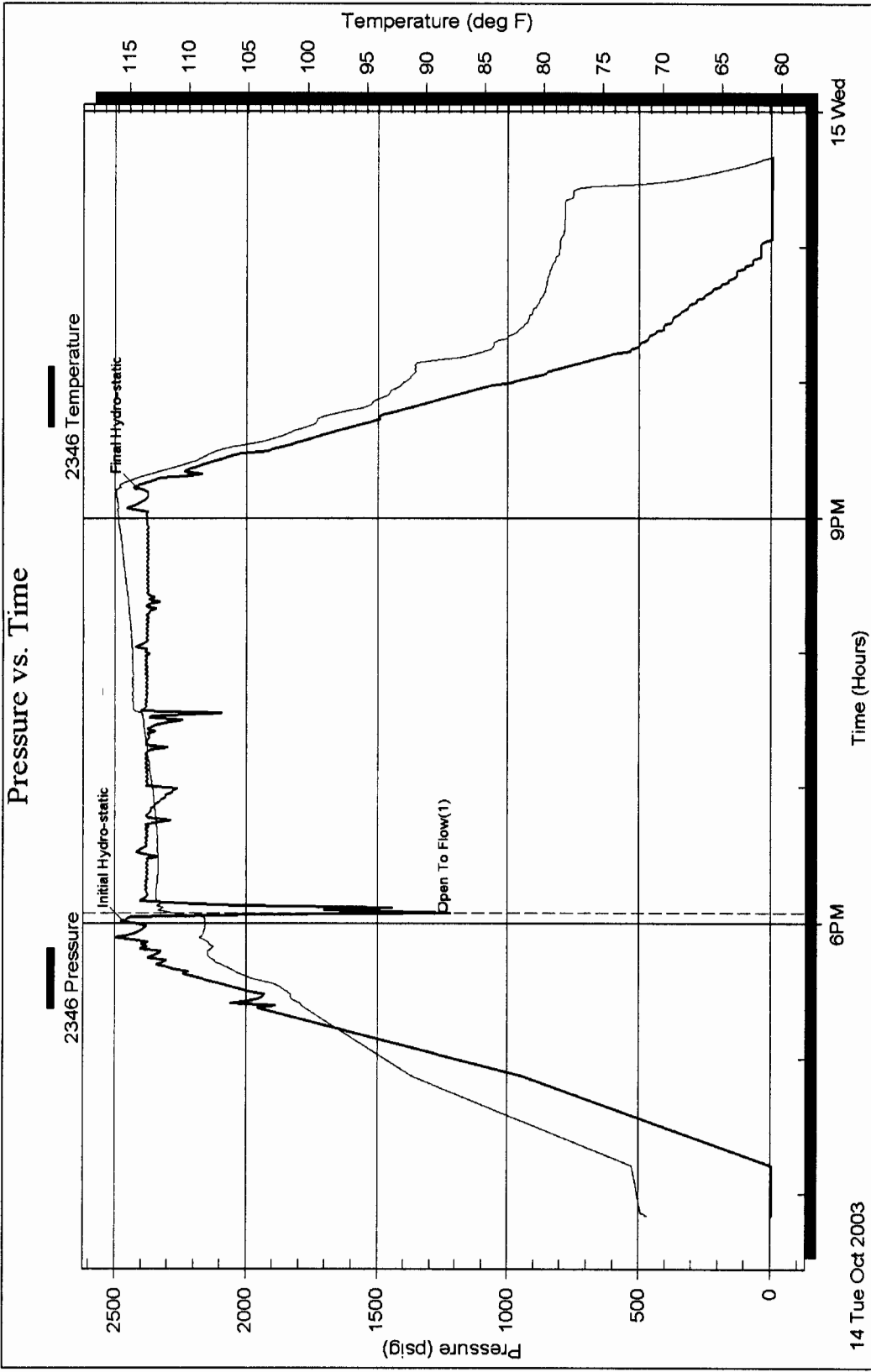
Serial #: 2346

Castelli Explorations Inc

17-33s-16w Comanche

DST Test Number: 2

Pressure vs. Time



Tribotite Testing, Inc

Ref. No: 17118

Printed: 2003.10.15 @ 09:02:57 Page 5

CONSERVATION DIVISION
WICHITA, KS

RECEIVED
KANSAS CORPORATION COMMISSION
JAN 07 2004

RECEIVED
KANSAS CORPORATION COMMISSION
JAN 07 2004
CONSERVATION DIVISION
WICHITA, KS



**TRILOBITE
TESTING, INC.**

DRILL STEM TEST REPORT

Prepared For: **Castelli Explorations Inc**

8908 NW 112th St
Okla City, Ok 73162

ATTN: Rick Pope

17-33s-16w Comanche

Gregg 1-17

Start Date: 2003.10.13 @ 21:50:12

End Date: 2003.10.14 @ 05:21:42

Job Ticket #: 17817 DST #: 1

Trilobite Testing, Inc
PO Box 362 Hays, KS 67601
ph: 785-625-4778 fax: 785-625-5620

Castelli Explorations Inc

Gregg 1-17

17-33s-16w Comanche

DST # 1

Mississippi

2003.10.13



**TRILOBITE
TESTING, INC.**

DRILL STEM TEST REPORT

Castelli Explorations Inc
8908 NW 112th St
Okla City, Ok 73162
ATTN: Rick Pope

Gregg 1-17
17-33s-16w Comanche
Job Ticket: 17817 DST#: 1
Test Start: 2003.10.13 @ 21:50:12

CONSERVATION DIVISION
WICHITA, KS

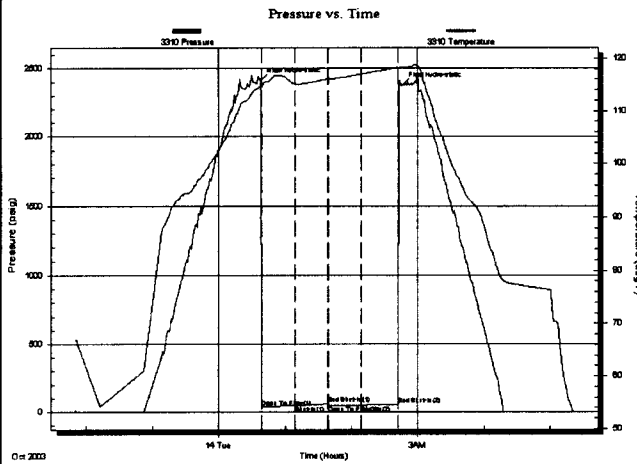
RECEIVED
KANSAS CORPORATION COMMISSION
JAN 07 2004

GENERAL INFORMATION:

Formation: **Mississippi**
Deviated: No Whipstock: ft (KB)
Time Tool Opened: 00:38:42
Time Test Ended: 05:21:42
Interval: **4922.00 ft (KB) To 4970.00 ft (KB) (TVD)**
Total Depth: 4970.00 ft (KB) (TVD)
Hole Diameter: 7.88 inches Hole Condition: Fair
Test Type: Conventional Bottom Hole
Tester: Nathan & Nick
Unit No: 16
Reference Elevations: 1827.00 ft (KB)
1814.00 ft (CF)
KB to GR/CF: 13.00 ft

Serial #: 3310 Inside
Press@RunDepth: 48.39 psig @ 4957.00 ft (KB) Capacity: 7000.00 psig
Start Date: 2003.10.13 End Date: 2003.10.14 Last Calib.: 1899.12.30
Start Time: 21:50:13 End Time: 05:21:42 Time On Btm: 2003.10.14 @ 00:38:12
Time Off Btm: 2003.10.14 @ 02:45:57

TEST COMMENT: IF- Week surface blow 1/2 in bucket
IS- No Blow
FF-Surface blow; blow dead in 19min
FSI-No blow



PRESSURE SUMMARY

| Time (Min.) | Pressure (psig) | Temp (deg F) | Annotation |
|-------------|-----------------|--------------|----------------------|
| 0 | 2411.98 | 114.59 | Initial Hydro-static |
| 1 | 36.81 | 114.60 | Open To Flow(1) |
| 31 | 44.60 | 115.13 | Shut-In(1) |
| 61 | 58.34 | 116.07 | End Shut-In(1) |
| 62 | 46.35 | 116.08 | Open To Flow(2) |
| 91 | 48.39 | 116.95 | Shut-In(2) |
| 124 | 56.24 | 118.25 | End Shut-In(2) |
| 128 | 2375.15 | 118.32 | Final Hydro-static |

Recovery

| Length (ft) | Description | Volume (bbl) |
|-------------|-------------|--------------|
| 16.00 | Drig Mud | 0.08 |
| | | |
| | | |
| | | |
| | | |

Gas Rates

| Choke (inches) | Pressure (psig) | Gas Rate (Mcf/d) |
|----------------|-----------------|------------------|
| | | |



**TRILOBITE
TESTING, INC.**

DRILL STEM TEST REPORT

TOOL DIAGRAM

Castelli Explorations Inc

Gregg 1-17

8908 NW 112th St
Okla City, Ok 73162

17-33s-16w Comanche

Job Ticket: 17817

DST#: 1

ATTN: Rick Pope

Test Start: 2003.10.13 @ 21:50:12

CONSERVATION DIVISION
WICHITA, KS

RECEIVED
KANSAS CORPORATION COMMISSION
JAN 07 2004

Tool Information

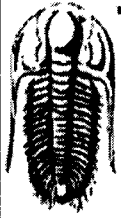
| | | | | |
|---------------------------|--------------------|-----------------------|--------------------------------|------------------------------------|
| Drill Pipe: | Length: 4801.00 ft | Diameter: 3.80 inches | Volume: 67.35 bbl | Tool Weight: 2400.00 lb |
| Heavy Wt. Pipe: | Length: 0.00 ft | Diameter: 0.00 inches | Volume: 0.00 bbl | Weight set on Packer: 24000.00 lb |
| Drill Collar: | Length: 124.00 ft | Diameter: 2.25 inches | Volume: 0.61 bbl | Weight to Pull Loose: 92000.00 lb |
| | | | <u>Total Volume: 67.96 bbl</u> | Tool Chased 0.00 ft |
| Drill Pipe Above KB: | 30.00 ft | | | String Weight: Initial 84000.00 lb |
| Depth to Top Packer: | 4922.00 ft | | | Final 84000.00 lb |
| Depth to Bottom Packer: | ft | | | |
| Interval between Packers: | 48.00 ft | | | |
| Tool Length: | 75.00 ft | | | |
| Number of Packers: | 2 | Diameter: 6.75 inches | | |

Tool Comments:

| Tool Description | Length (ft) | Serial No. | Position | Depth (ft) | Accum. Lengths |
|------------------|-------------|------------|----------|------------|----------------|
|------------------|-------------|------------|----------|------------|----------------|

| | | | | | |
|-----------------|-------|-------|---------|---------|-------------------------------|
| Change Over Sub | 1.00 | | | 4896.00 | |
| Shut In Tool | 5.00 | | | 4901.00 | |
| Hydraulic tool | 5.00 | | | 4906.00 | |
| Jars | 5.00 | | | 4911.00 | |
| Safety Joint | 2.00 | | | 4913.00 | |
| Packer | 4.00 | | | 4917.00 | 27.00 Bottom Of Top Packer |
| Packer | 5.00 | | | 4922.00 | |
| Stubb | 1.00 | | | 4923.00 | |
| Change Over Sub | 1.00 | | | 4924.00 | |
| Blank Spacing | 32.00 | | | 4956.00 | |
| Change Over Sub | 1.00 | | | 4957.00 | |
| Recorder | 0.00 | 3310 | Inside | 4957.00 | |
| Perforations | 11.00 | | | 4968.00 | |
| Recorder | 0.00 | 13630 | Outside | 4968.00 | |
| Bullnose | 2.00 | | | 4970.00 | 48.00 Bottom Packers & Anchor |

Total Tool Length: 75.00



**TRILOBITE
TESTING, INC.**

DRILL STEM TEST REPORT

FLUID SUMMARY

Castelli Explorations Inc

Gregg 1-17

8908 NW 112th St
Okla City, Ok 73162

17-33s-16w Comanche

Job Ticket: 17817 **DST#: 1**

ATTN: Rick Pope

Test Start: 2003.10.13 @ 21:50:12

Mud and Cushion Information

Mud Type: Gel Chem

Cushion Type:

Oil API:

deg API

Mud Weight: 9.00 lb/gal

Cushion Length: ft

Water Salinity: ppm

Viscosity: 51.00 sec/qt

Cushion Volume: bbl

Water Loss: 10.37 in³

Gas Cushion Type:

Resistivity: 0.00 ohm.m

Gas Cushion Pressure: psig

Salinity: 3000.00 ppm

Filter Cake: 0.02 inches

RECEIVED

Recovery Information

KANSAS CORPORATION COMMISSION

Recovery Table

JAN 07 2004

| Length ft | Description | Volume bbl |
|--------------|-------------|---------------|
| 16.00 | Drig Mud | 0.079 |

CONSERVATION DIVISION
WICHITA, KS

Total Length: 16.00ft Total Volume: 0.079 bbl

Num Fluid Samples: 0 Num Gas Bombs: 0 Serial #:

Laboratory Name: Laboratory Location:

Recovery Comments:

JAN 07 2004

CONSERVATION DIVISION
WICHITA, KS

DST Test Number: 1

17-33s-16w Comanche

Castelli Explorations Inc

Inside

Serial #: 3310

Pressure vs. Time

