

COPY

**WELL NAME**

Lenertz #1-2

**COMPANY**

American Warrior, Inc.

**LOCATION**

2-33s-16w

Comanche co Kansas

**DATE**

1/16/01

TRILOBITE TESTING L.L.C.

COPY

OPERATOR : American Warrior, Inc.

DATE 01/11/200

WELL NAME: Lenertz #1-2

KB 1823.00 ft

TICKET NO: 13275

DST #1

LOCATION : 2-33s-16w Comanche co KS

GR 1810.00 ft

FORMATION: Viola

INTERVAL : 5212.00 To 5238.00 ft

TD 5238.00 ft

TEST TYPE: CONVENTIONAL

RECORDER DATA

Mins	Field	1	2	3	4	TIME DATA-----
PF 15	Rec.	10991	10991	3302		PF Fr. 0309 to 0324 hr
SI 60	Range(Psi )	4200.0	4200.0	4995.0	0.0	0.0 IS Fr. 0324 to 0424 hr
SF 15	Clock(hrs)	12hr.	12hr.	elec.		SF Fr. 0424 to 0439 hr
FS 90	Depth(ft )	5235.0	5235.0	5217.0	0.0	0.0 FS Fr. 0439 to 0609 hr

	Field	1	2	3	4	
A. Init Hydro	0.0	0.0	2574.0	0.0	0.0	T STARTED 0026 hr
B. First Flow	0.0	0.0	1371.0	0.0	0.0	T ON BOTM 0306 hr
B1. Final Flow	0.0	0.0	1485.0	0.0	0.0	T OPEN 0309 hr
C. In Shut-in	0.0	0.0	1938.0	0.0	0.0	T PULLED 0609 hr
D. Init Flow	0.0	0.0	1344.0	0.0	0.0	T OUT 0800 hr
E. Final Flow	0.0	0.0	1512.0	0.0	0.0	
F. Fl Shut-in	0.0	0.0	1937.0	0.0	0.0	TOOL DATA-----
G. Final Hydro	0.0	0.0	2521.0	0.0	0.0	Tool Wt. 2100.00 lbs
Inside/Outside	0	0	I			Wt Set On Packer 20000.00 lbs
						Wt Pulled Loose 82000.00 lbs
						Initial Str Wt 78000.00 lbs
						Unseated Str Wt 78000.00 lbs
						Bot Choke 0.75 in
						Hole Size 7.88 in
						D Col. ID 2.25 in
						D. Pipe ID 3.80 in
						D.C. Length 353.10 ft
						D.P. Length 4856.90 ft

RECOVERY

Tot Fluid 10.00 ft of 10.00 ft in DC and 0.00 ft in DP  
 5200.00 ft of Gas in pipe  
 10.00 ft of Condensate  
 0.00 ft of  
 0.00 ft of  
 0.00 ft of  
 0.00 ft of  
 0.00 ft of  
 0.00 ft of

Wt Set On Packer 20000.00 lbs  
 Wt Pulled Loose 82000.00 lbs  
 Initial Str Wt 78000.00 lbs  
 Unseated Str Wt 78000.00 lbs  
 Bot Choke 0.75 in  
 Hole Size 7.88 in  
 D Col. ID 2.25 in  
 D. Pipe ID 3.80 in  
 D.C. Length 353.10 ft  
 D.P. Length 4856.90 ft

SALINITY 0.00 P.P.M. A.P.I. Gravity 0.00

BLOW DESCRIPTION

Initial Flow:  
 Strong blow bottom of bucket in 10 seconds. Gas to surface in 1 1/2 minutes. Gauge gas  
 Initial Shut-In:  
 Bled down for 60 minutes. No blow back.  
 Final Flow:  
 Strong blow bottom of bucket in 10 seconds. Gauge gas  
 Final Shut-In:  
 Bled down for 60 minutes. Built back to 1" in H2O bucket.

MUD DATA-----  
 Mud Type Chemical  
 Weight 9.00 lb/cf  
 Vis. 54.00 S/L  
 W.L. 8.80 in3  
 F.C. 0.32 in  
 Mud Drop N  
 Amt. of fill 0.00 ft  
 Btm. H. Temp. 132.00 F  
 Hole Condition good  
 % Porosity 0.00  
 Packer Size 6.75 in  
 No. of Packers 2  
 Cushion Amt. 0.00 n  
 Cushion Type none  
 Reversed Out N  
 Tool Chased N  
 Tester Darren L. Amerine  
 Co. Rep. Alan Downing  
 Contr. Duke  
 Rig # 7  
 Unit # none  
 Pump T. none

SAMPLES: Caraway Analytical 728 N. Roosevelt  
 SENT TO: Liberal, Kansas. 67901

Test Successful: Y

GAS RECOVERY

COPY

COMPANY: American Warrior, Inc.

DATE: 01/11/200

WELL NAME: Lenertz #1-2

KB Elev: 1823.00 ft TICKET #13275 DST #1

WELL LOCATION: 2-33s-16w Comanche co KS

GR Elev: 1810.00 ft FORMATION: Viola

INTERVAL Fr.: 5212.00 To 5238.00 T.D.: 5238.00 ft TEST TYPE: CONVENTIONAL

GAS RECOVERY MEASURED WITH Adj.Choke

\*\*\*\*\* GAS RATES FOR FLOW #1

Time (min)	Orifice (in)	Pressure (Psi)	H2O (in)	Rate (cf/d)
6	0.75	300	0	4561700.0
11	0.75	400	0	6011700.0
15	0.75	450	0	6755300.0

\*\*\*\*\* GAS RATES FOR FLOW #2

Time (min)	Orifice (in)	Pressure (Psi)	H2O (in)	Rate (cf/d)
5	0.75	350	0	5286700.0
10	0.75	400	0	6011700.0
15	0.75	450	0	6755300.0

\*\*\* TOOL DIAGRAM \*\*\* CONVENTIONAL

WELL NAME: Lenertz #1-2

LOCATION : 2-33s-16w Comanche co KS

TICKET No. 13275 D.S.T. No. 1 DATE 01/11/200

TOTAL TOOL TO BOTTOM OF TOP PACKERS ..... 28

INTERVAL TOOL .....

BOTTOM PACKERS AND ANCHOR ..... 26

TOTAL TOOL ..... 54

DRILL COLLAR ANCHOR IN INTERVAL .....

D.C. ANCHOR STND.Stands Single Total

D.P. ANCHOR STND.Stands Single Total

TOTAL ASSEMBLY .....

D.C. ABOVE TOOLS.Stands6 Single Total 353.10

D.P. ABOVE TOOLS.Stands79 Single Total 4856.90

TOTAL DRILL COLLARS DRILL PIPE & TOOLS .. 5264

TOTAL DEPTH ..... 5238

TOTAL DRILL PIPE ABOVE K.B. .... 26

REMARKS:

P.O. SUB Top of tool @ 5185  
C.O. SUB 5186

S.I. TOOL 5191

H

HMV 5196

COPY

JARS 5201

H

H

SAFETY JOINT 5203

PACKER 5207

PACKER 5212

DEPTH 5213

ANCHOR 22'of perms.to 5235

Alpine rec.@ 5217

H

H

H

H

H

H

H

H

H

H

H

H

H

H

H

H

H

Ak-1 rec. @ 5235

BULLNOSE 3'bullnose to T.D. 5238

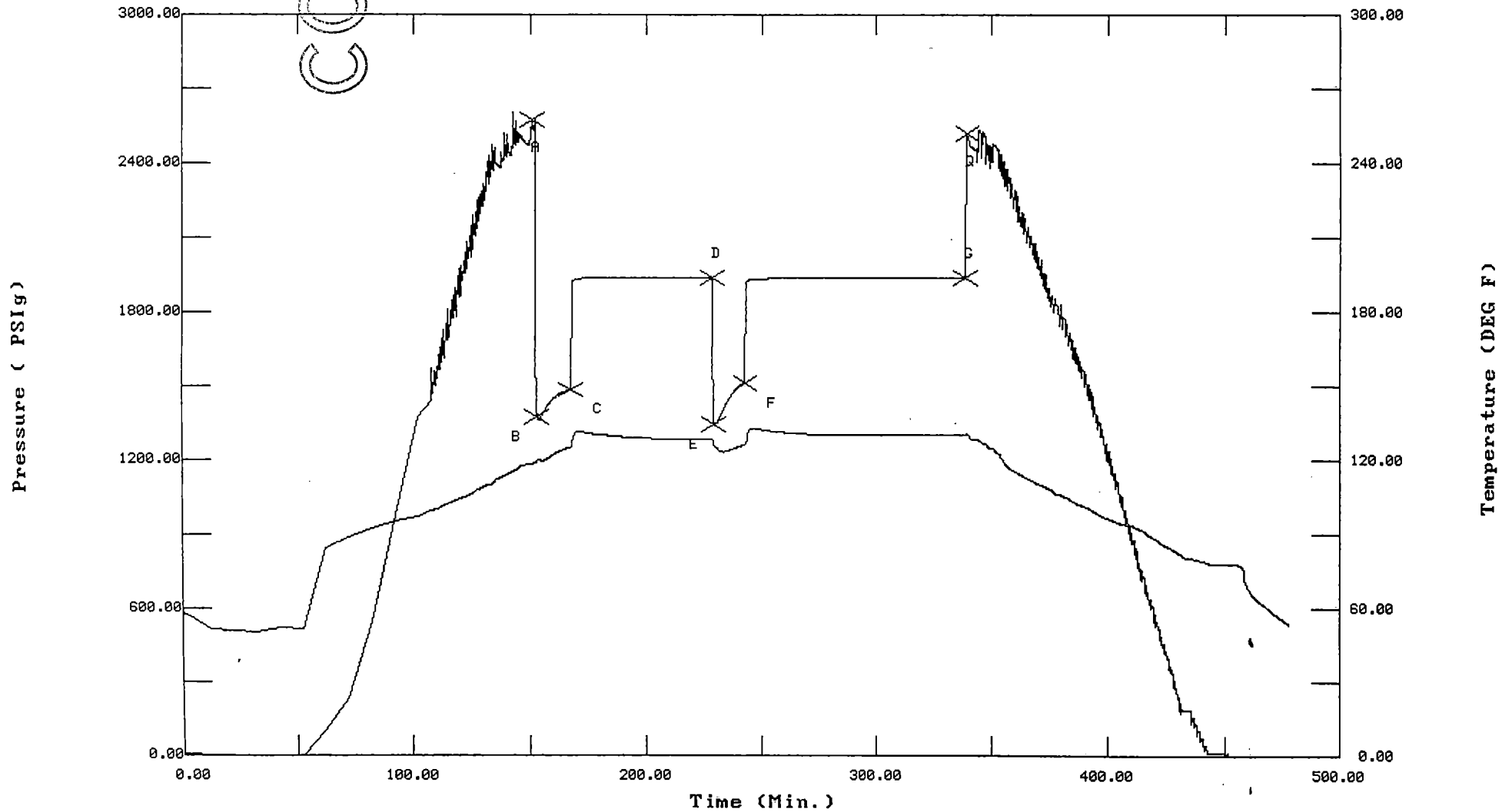
# TEST HISTORY

Tk#13275 DST#1 Lenertz #1-2 American Warrior, Inc.

COPY

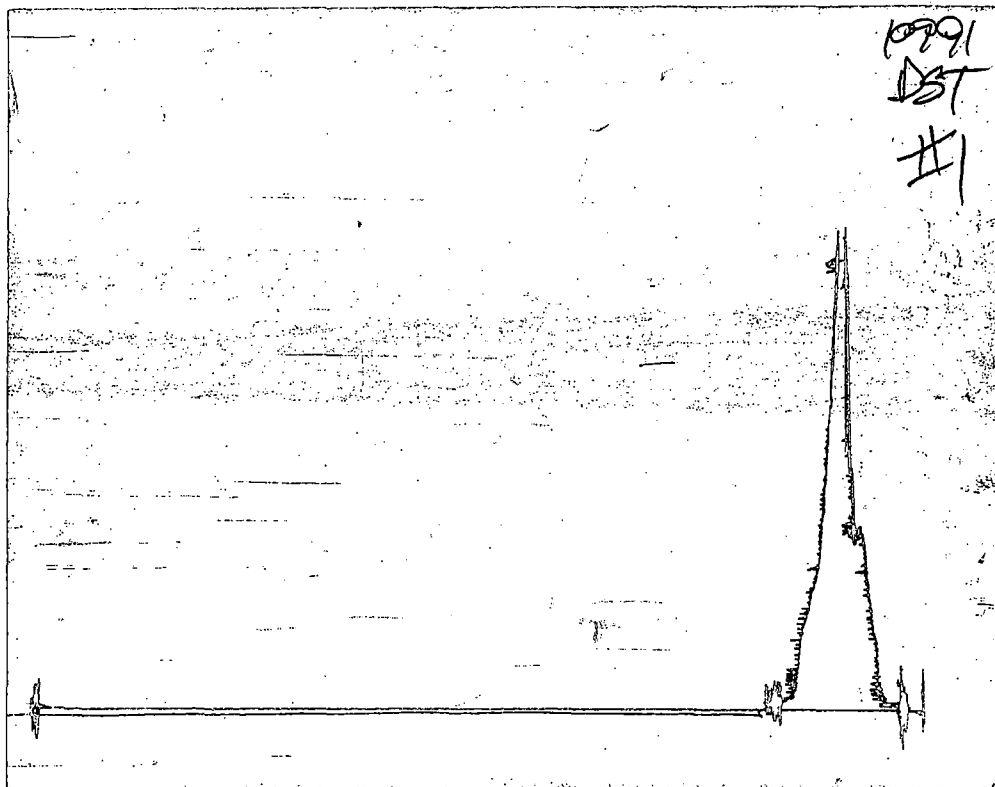
Flag Points  
t(Min.) P(PSig)

A:	0.00	2574.00
B:	0.00	1371.03
C:	14.75	1484.58
D:	61.50	1938.44
E:	0.00	1343.59
F:	13.50	1511.64
G:	95.50	1937.40
Q:	0.00	2520.99



COPY

CHART PAGE



This is a photocopy of the actual AK-1 recorder chart



# TRILOBITE TESTING L.L.C.

P.O. Box 362 • Hays, Kansas 67601

**COPY** No. 13275

## Test Ticket

Well Name & No. Lenertz #1-2 Test No. #1 Date 01/11/01  
 Company American Warrior, Inc. Zone Tested Vioke  
 Address P.O. box 399 Garden City, KS. 67846-0389 Elevation 1823 KB 1810 GL  
 Co. Rep / Geo. AL Downing Cont. Duke #7 Est. Ft. of Pay      Por.      %  
 Location: Sec. 2 Twp. 35S Rge. 16 W Co. Comanche State KS  
 No. of Copies 5 Distribution Sheet (Y, N)      Turnkey (Y, N)      Evaluation (Y, N)     

Interval Tested 5212' - 5238' Initial Str Wt./Lbs. 78000 Unseated Str Wt./Lbs. 78000  
 Anchor Length 26' Wt. Set Lbs. 20,000 Wt. Pulled Loose/Lbs. 22000  
 Top Packer Depth 5207' Tool Weight 2100  
 Bottom Packer Depth 5212' Hole Size — 7 7/8"  Rubber Size — 6 3/4"   
 Total Depth 5238' Wt. Pipe Run N/A Drill Collar Run 353.10  
 Mud Wt. 9.0+ LCM 7# Vis. 54 WL 8.8 Drill Pipe Size 4 1/2 X H Ft. Run 4856.90  
 Blow Description FF: Strong blow D.O.B in 10 sec 6TS in 1 1/2 mins Gauge  
ISI: Bleed down for 60 mins No blow back.  
FF: Strong blow D.O.B in 10 sec Gauge Gas  
FST: Bleed down for 60 mins bleed back to 1" in 120 backer

Recovery — Total Feet	GIP	Ft. in DC	Ft. in DP				
Rec. <u>10'</u>	<u>5200'</u>	<u>10'</u>		%gas	%oil	%water	%mud
Rec. <u>5200'</u>				%gas	%oil	%water	%mud
Rec. <u>    </u>				%gas	%oil	%water	%mud
Rec. <u>    </u>				%gas	%oil	%water	%mud
BHT <u>132°</u>	°F Gravity	°API D@	°F Corrected Gravity				
RW <u>    </u>	@	°F Chlorides	ppm Recovery	Chlorides <u>3800</u>	ppm System		

	AK-1	Alpine	PSI	Recorder No.	T-On Location
(A) Initial Hydrostatic Mud	<u>Clack</u>	<u>2574</u>		<u>3302</u>	<u>2345</u>
(B) First Initial Flow Pressure	<u>stopped</u>	<u>1371</u>		(depth) <u>5217'</u>	T-Started <u>0026</u>
(C) First Final Flow Pressure	<u>when</u>	<u>1485</u>		Recorder No. <u>10991</u>	T-Open <u>0309</u>
(D) Initial Shut-In Pressure	<u>tool</u>	<u>1938</u>		(depth) <u>5235'</u>	T-Pulled <u>0609</u>
(E) Second Initial Flow Pressure	<u>opened</u>	<u>1344</u>		Recorder No. <u>    </u>	T-Out <u>0800</u>
(F) Second Final Flow Pressure	<u>    </u>	<u>1512</u>		(depth) <u>    </u>	T-Off Location <u>0900</u>
(G) Final Shut-in Pressure	<u>    </u>	<u>1937</u>		Initial Opening <u>15</u>	Test <input checked="" type="checkbox"/>
(Q) Final Hydrostatic Mud	<u>    </u>	<u>2521</u>		Initial Shut-in <u>60</u>	Jars <input checked="" type="checkbox"/>
				Final Flow <u>15</u>	Safety Joint <input checked="" type="checkbox"/>
				Final Shut-in <u>90</u>	Straddle <u>    </u>

TRILOBITE TESTING L.L.C. SHALL NOT BE LIABLE FOR DAMAGE OF ANY KIND OF THE PROPERTY OR PERSONNEL OF THE ONE FOR WHOM A TEST IS MADE, OR FOR ANY LOSS SUFFERED OR SUSTAINED, DIRECTLY OR INDIRECTLY, THROUGH THE USE OF ITS EQUIPMENT, OR ITS STATEMENTS OR OPINION CONCERNING THE RESULTS OF ANY TEST. TOOLS LOST OR DAMAGED IN THE HOLE SHALL BE PAID FOR AT COST BY THE PARTY FOR WHOM THE TEST IS MADE.

Approved By [Signature]  
 Our Representative Downing

Extra Packer       
 Elec. Rec.   
 Mileage 70 mi.  
 Other       
 TOTAL PRICE \$

# NATURAL GAS ANALYSIS REPORT

Sampled by:

Trilobite Testing, L. L. C.  
Hays, Kansas  
Scott City, Kansas  
Phone: 800-728-5369  
Fax: 913-625-5620

Analyzed by:

Caraway Analytical, Inc  
P. O. Box 2137  
Liberal, Kansas 67905  
Phone: 316-624-5389  
Fax: 316-626-7108

**Lab Number: 20010143**      **Analyzed: 01/17/01**

Sample From: Lenertz 1-2 DST 1      Pressure:  
Producer: American Warrior, Inc.      Temperature:

**Date: Location: 2-33-16**

Time:      County: Comanche  
Sampler:      State: Kansas  
Source:      Formation: Viola

	Mole %	GPM
Helium	He: 0.568	0.000
Hydrogen	H2: 0.013	0.000
Oxygen	O2: 0.000	0.000
Nitrogen	N2: 15.891	0.000
Carbon Dioxide	CO2: 0.150	0.000
Methane	C1: 74.568	0.000
Ethane	C2: 4.645	1.242
Propane	C3: 2.215	0.610
Iso Butane	iC4: 0.306	0.100
Normal Butane	nC4: 0.889	0.280
Iso Pentane	iC5: 0.208	0.076
Normal Pentane	nC5: 0.263	0.095
Hexanes Plus	C6+: 0.284	0.124

TOTAL: 100.000      2.528

Z Fact: 0.9978

SP.GR.: 0.6984

BTU (SAT): 951.0 @ 14.73 psia  
BTU (DRY): 967.8 @ 14.73 psia  
OCTANE RATING: 105.4

COMMENTS:

0.000