

Company Range Oil Company, Inc. Lease & Well No. #3 Stewart "A"
 Elevation 1563 Kelly Bushing Formation Mississippi Effective Pay -- Ft. Ticket No. 18321
 Date 12/ 5 /82 Sec. 17 Twp. 33S Range 10W County Barber State Kansas
 Test Approved by Tim J.Lauer Western Representative Rod Tritt

Formation Test No. 1 Interval Tested from 4610 ft. to 4633 ft. Total Depth 4633 ft.
 Packer Depth 4605 ft. Size 6 3/4 in. Packer Depth - ft. Size - in.
 Packer Depth 4610 ft. Size 6 3/4 in. Packer Depth - ft. Size - in.
 Depth of Selective Zone Set -

Top Recorder Depth (Inside) 4614 ft. Recorder Number 2606 Cap. 4150
 Bottom Recorder Depth (Outside) 4617 ft. Recorder Number 4332 Cap. 4200
 Below Straddle Recorder Depth -- ft. Recorder Number - Cap. -

Drilling Contractor Range Drilling Rig #2 Drill Collar Length 93 I. D. 2 1/4 in.
 Mud Type drispac Viscosity 47 Weight Pipe Length - I. D. - in.
 Weight 9.8 Water Loss 17.4 cc. Drill Pipe Length 4497 I. D. 3.8 in.
 Chlorides 12,000 P.P.M. Test Tool Length 20 ft. Tool Size 5 1/2 OD in.
 Jars: Make - Serial Number - Anchor Length 23 ft. Size 5 1/2 OD in.
 Did Well Flow? No Reversed Out No Surface Choke Size 3/4 in. Bottom Choke Size 3/4 in.
 Main Hole Size 7 7/8 in. Tool Joint Size 4 1/2 FH in.

Blow: Very weak blow for fifteen minutes on initial flow period. Very weak after flushing tool for eighteen minutes on final flow period.

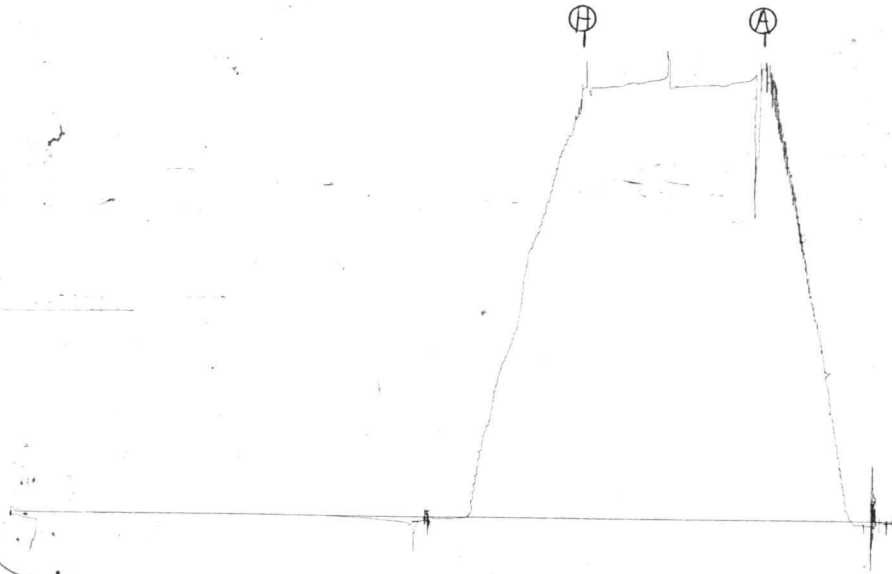
Recovered ft. of
 Recovered ft. of
 Recovered ft. of
 Recovered ft. of MISRUN
 Recovered ft. of

Remarks: DIDN'T REMOVE FLOAT FROM DRILL COLLAR FOR TEST.

Time Set Packer(s) 5:30 A.M. Time Started Off Bottom 7:30 P.M. Maximum Temperature -----
 Initial Hydrostatic Pressure (A) 2424 P.S.I.
 Initial Flow Period Minutes (B) - P.S.I. to (C) - P.S.I.
 Initial Closed In Period Minutes (D) - P.S.I.
 Final Flow Period Minutes (E) - P.S.I. to (F) - P.S.I.
 Final Closed In Period Minutes (G) - P.S.I.
 Final Hydrostatic Pressure (H) 2309 P.S.I.

2606 DST # 1

TKT # 18321
I



4332 DST # 1

TKT # 18321
O



Company Range Oil Company, Inc. Lease & Well No. #3 Stewart "A"
 Elevation 1563 Kelly Bushing Formation Mississippi Effective Pay -- Ft. Ticket No. 18322
 Date 12/6/82 Sec. 17 Twp. 33S Range 10W County Barber State Kansas
 Test Approved by Tim J. Lauer Western Representative Rod Tritt

Formation Test No. 2 Interval Tested from 4609 ft. to 4653 ft. Total Depth 4653 ft.
 Packer Depth 4604 ft. Size 6 3/4 in. Packer Depth - ft. Size - in.
 Packer Depth 4609 ft. Size 6 3/4 in. Packer Depth - ft. Size - in.

Depth of Selective Zone Set -
 Top Recorder Depth (Inside) 4613 ft. Recorder Number 2606 Cap. 4150
 Bottom Recorder Depth (Outside) 4616 ft. Recorder Number 4332 Cap. 4200
 Below Straddle Recorder Depth -- ft. Recorder Number - Cap. -

Drilling Contractor Range Drilling Rig #2 Drill Collar Length 93 I. D. 2 1/4 in.
 Mud Type drispac Viscosity 48 Weight Pipe Length - I. D. - in.
 Weight 9.5 Water Loss 14.8 cc. Drill Pipe Length 4496 I. D. 3.8 in.
 Chlorides 11,000 P.P.M. Test Tool Length 20 ft. Tool Size 5 1/2 OD in.
 Jars: Make - Serial Number - Anchor Length 44 ft. Size 5 1/2 OD in.
 Did Well Flow? NO Reversed Out NO Surface Choke Size 3/4 in. Bottom Choke Size 3/4 in.
 Main Hole Size 7 7/8 in. Tool Joint Size 4 1/2 FH in.

Blow: MISRUN

Recovered _____ ft. of _____
 Recovered _____ ft. of _____
 Recovered _____ ft. of _____
 Recovered _____ ft. of _____
 Recovered _____ ft. of _____

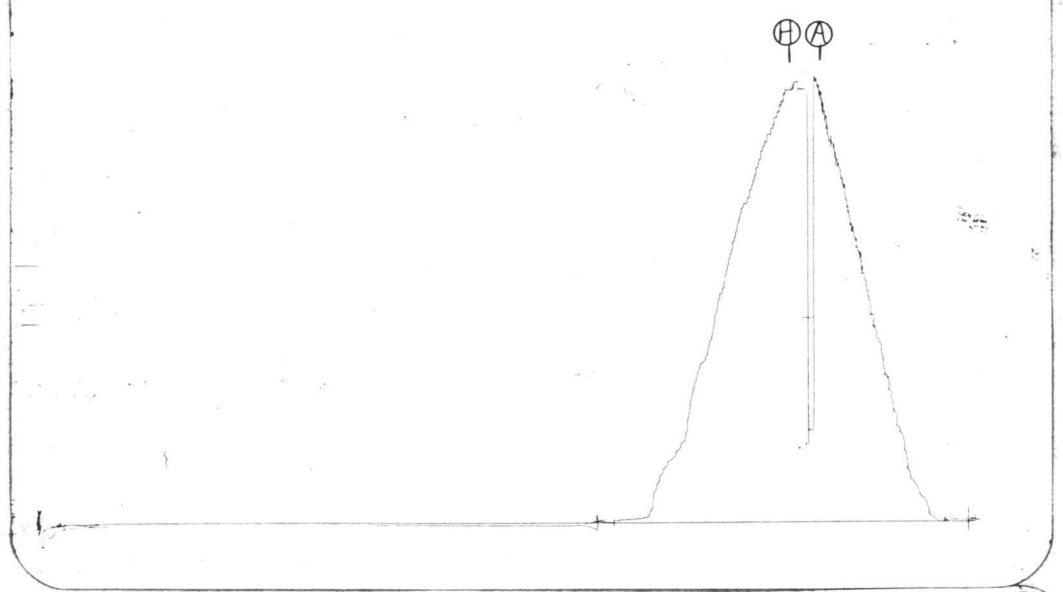
Remarks: _____

Time Set Packer(s) 8:45 A.M. Time Started Off Bottom 9:00 A.M. Maximum Temperature ---
P.M. P.M.
 Initial Hydrostatic Pressure (A) 2387 P.S.I.
 Initial Flow Period Minutes (B) - P.S.I. to (C) - P.S.I.
 Initial Closed In Period Minutes (D) - P.S.I.
 Final Flow Period Minutes (E) - P.S.I. to (F) - P.S.I.
 Final Closed In Period Minutes (G) - P.S.I.
 Final Hydrostatic Pressure (H) 2374 P.S.I.

2606 - 42172

TKT # 18322

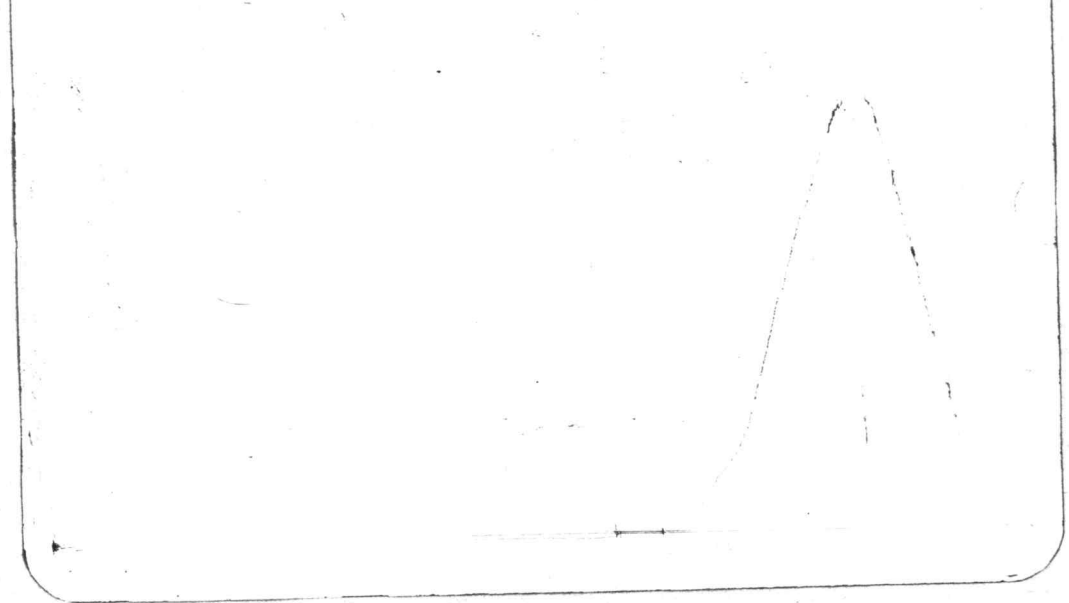
I



4332 DST#2

TKT # 18322

○



Company Range Oil Company, Inc. Lease & Well No. #3 Stewart "A"
 Elevation 1563 Kelly Bushing Formation Mississippi Effective Pay -- Ft. Ticket No. 18323
 Date 12/6/82 Sec. 17 Twp. 33S Range 10W County Barber State Kansas
 Test Approved by Tim J. Lauer Western Representative Rod Tritt

Formation Test No. 3 Interval Tested from 4618 ft. to 4653 ft. Total Depth 4653 ft.
 Packer Depth 4613 ft. Size 6 3/4 in. Packer Depth - ft. Size - in.
 Packer Depth 4618 ft. Size 6 3/4 in. Packer Depth - ft. Size - in.
 Depth of Selective Zone Set -

Top Recorder Depth (Inside) 4622 ft. Recorder Number 2606 Cap. 4150
 Bottom Recorder Depth (Outside) 4625 ft. Recorder Number 4332 Cap. 4200
 Below Straddle Recorder Depth -- ft. Recorder Number - Cap. -

Drilling Contractor Range Drilling Rig #2 Drill Collar Length 93 I. D. 2 1/4 in.
 Mud Type drispac Viscosity 48 Weight Pipe Length - I. D. - in.
 Weight 9.5 Water Loss 14.8 cc. Drill Pipe Length 4506 I. D. 3.8 in.
 Chlorides 11,000 P.P.M. Test Tool Length 20 ft. Tool Size 5 1/2 OD in.
 Jars: Make - Serial Number - Anchor Length 34 ft. Size 5 1/2 OD in.
 Did Well Flow? No Reversed Out No Surface Choke Size 3/4 in. Bottom Choke Size 3/4 in.
 Main Hole Size 7 7/8 in. Tool Joint Size 4 1/2 FH in.

Blow: PACKER SEAT DIDN'T HOLD MISRUN

Recovered _____ ft. of _____
 Recovered _____ ft. of _____
 Recovered _____ ft. of _____
 Recovered _____ ft. of _____
 Recovered _____ ft. of _____

Remarks: _____

Time Set Packer(s) 2:00 A.M. Time Started Off Bottom 2:15 A.M. Maximum Temperature ---
 P.M. P.M.
 Initial Hydrostatic Pressure (A) 2378 P.S.I.
 Initial Flow Period Minutes (B) - P.S.I. to (C) - P.S.I.
 Initial Closed In Period Minutes (D) - P.S.I.
 Final Flow Period Minutes (E) - P.S.I. to (F) - P.S.I.
 Final Closed In Period Minutes (G) - P.S.I.
 Final Hydrostatic Pressure (H) 2366 P.S.I.

4532 - DST # 3

TKT # 18323
O



2606 - DST # 3

TKT # 18323
I

