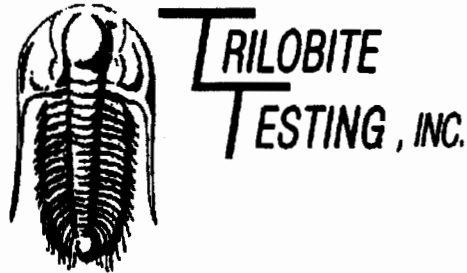


15-033-21563

17-33s-20w



DRILL STEM TEST REPORT

Prepared For: **Murfin Drilling Co. Inc.**

250 N Water Ste. 300 Wichita Ks. 67202

ATTN: Rocky Milford

CONFIDENTIAL

NOV 10 2009

KCC

17 33 20 Comanche KS

Neoma A #1-17

Start Date: 2009.09.06 @ 19:45:00

End Date: 2009.09.07 @ 02:57:09

Job Ticket #: 34088 DST #: 1

RECEIVED

NOV 12 2009

KCC WICHITA

Trilobite Testing, Inc

PO Box 1733 Hays, KS 67601

ph: 785-625-4778 fax: 785-625-5620

Murfin Drilling Co. Inc.

Neoma A #1-17

17 33 20 Comanche KS

DST # 1

Lan. K L

2009.09.06



**TRILOBITE
TESTING, INC**

DRILL STEM TEST REPORT

TOOL DIAGRAM

Murfin Drilling Co. Inc.
250 N Water Ste. 300 Wchita Ks. 67202
ATTN: Rocky Milford

Neoma A #1-17
17 33 20 Comanche KS
Job Ticket: 34088 **DST#: 1**
Test Start: 2009.09.06 @ 19:45:00

Tool Information

Drill Pipe:	Length: 4531.00 ft	Diameter: 3.80 inches	Volume: 63.56 bbl	Tool Weight: 2000.00 lb
Heavy Wt. Pipe:	Length: 0.00 ft	Diameter: 0.00 inches	Volume: 0.00 bbl	Weight set on Packer: 25000.00 lb
Drill Collar:	Length: 186.00 ft	Diameter: 2.25 inches	Volume: 0.91 bbl	Weight to Pull Loose: 64000.00 lb
			<u>Total Volume: 64.47 bbl</u>	Tool Chased 0.00 ft
Drill Pipe Above KB:	10.00 ft			String Weight: Initial 60000.00 lb
Depth to Top Packer:	4735.00 ft			Final 60000.00 lb
Depth to Bottom Packer:	ft			
Interval between Packers:	135.00 ft			
Tool Length:	163.00 ft			
Number of Packers:	2	Diameter: 6.75 inches		

Tool Comments:

Tool Description	Length (ft)	Serial No.	Position	Depth (ft)	Accum. Lengths
Change Over Sub	1.00			4708.00	
Shut In Tool	5.00			4713.00	
Hydraulic tool	5.00			4718.00	
Jars				4723.00	
Safety Joint	3.00			4726.00	
Packer	5.00			4731.00	28.00 Bottom Of Top Packer
Packer	4.00			4735.00	
Stubb	1.00			4736.00	
Perforations	1.00			4737.00	
Recorder	0.00	8355	Inside	4737.00	
Recorder	0.00	6773	Inside	4737.00	
Change Over Sub	1.00			4738.00	
Drill Pipe	124.00			4862.00	
Change Over Sub	1.00			4863.00	
Perforations	4.00			4867.00	
Bullnose	3.00			4870.00	135.00 Bottom Packers & Anchor
Total Tool Length:	163.00				

CONFIDENTIAL
NOV 10 2009

KCC



**TRILOBITE
TESTING, INC**

DRILL STEM TEST REPORT

FLUID SUMMARY

Murfin Drilling Co. Inc.
250 N Water Ste. 300 Wichita Ks. 67202
ATTN: Rocky Milford

Neoma A #1-17
17 33 20 Comanche KS
Job Ticket: 34088 DST#: 1
Test Start: 2009.09.06 @ 19:45:00

Mud and Cushion Information

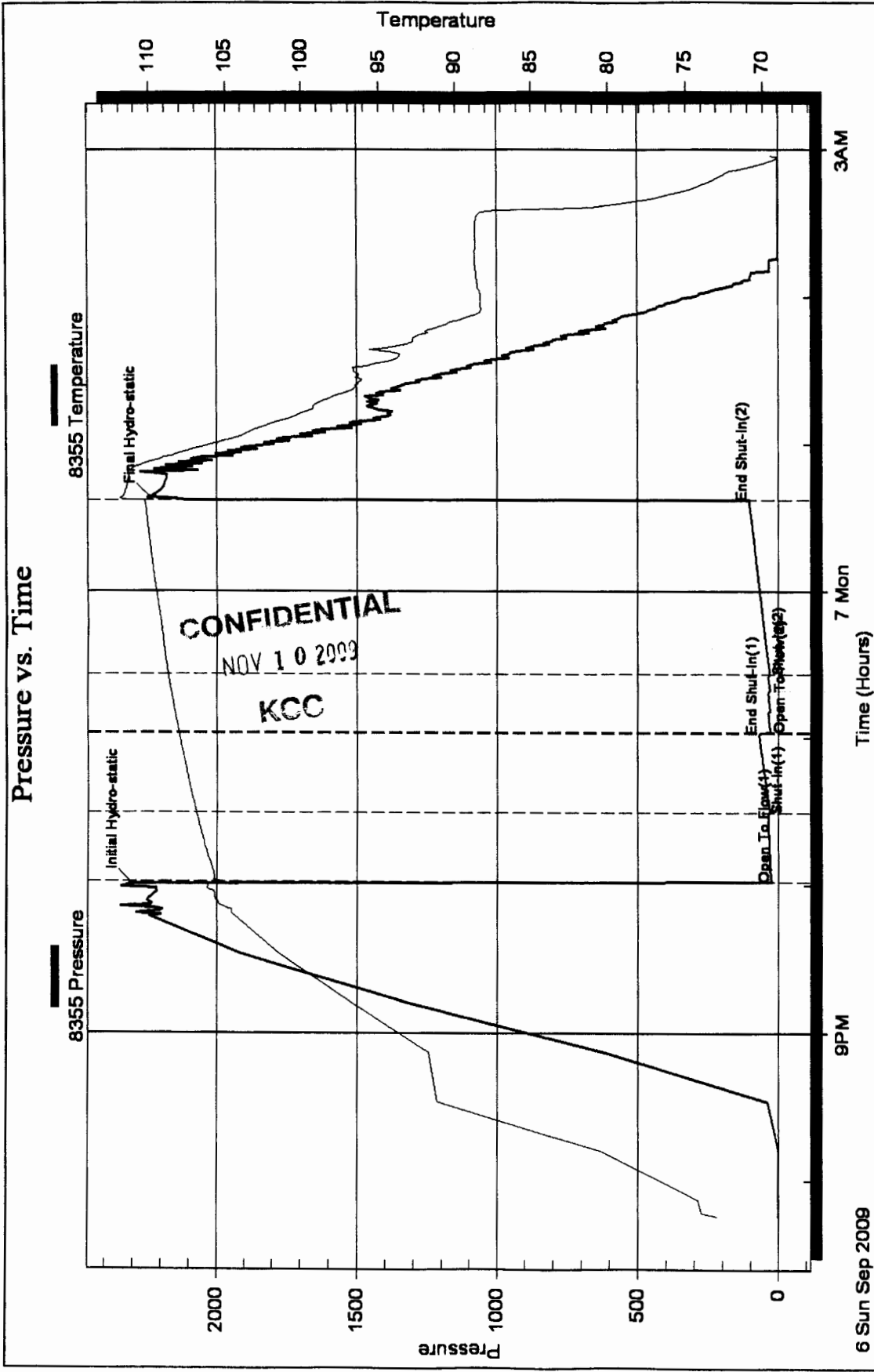
Mud Type: Gel Chem	Cushion Type:	Oil API:	deg API
Mud Weight: 9.00 lb/gal	Cushion Length: ft	Water Salinity:	ppm
Viscosity: 61.00 sec/qt	Cushion Volume: bbl		
Water Loss: 7.19 in ³	Gas Cushion Type:		
Resistivity: ohm.m	Gas Cushion Pressure: psig		
Salinity: 4500.00 ppm			
Filter Cake: inches			

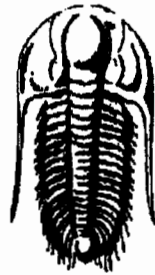
Recovery Information

Recovery Table

Length ft	Description	Volume bbl
10.00	100% mud with trace of oil	0.049

Total Length: 10.00 ft Total Volume: 0.049 bbl
 Num Fluid Samples: 0 Num Gas Bombs: 0 Serial #:
 Laboratory Name: Laboratory Location:
 Recovery Comments:





**TRILOBITE
TESTING, INC.**

DRILL STEM TEST REPORT

Prepared For: **Murfin Drilling Co. Inc.**

250 N Water Ste. 300 Wichita Ks. 67202

CONFIDENTIAL

NOV 10 2009

KCC

ATTN: Rocky Milford

17 33 20 Comanche KS

Neoma A #1-17

Start Date: 2009.09.08 @ 13:45:00

End Date: 2009.09.08 @ 21:28:50

Job Ticket #: 34089 DST #: 2

Murfin Drilling Co. Inc.

Neoma A #1-17

17 33 20 Comanche KS

DST # 2

Morrow

2009.09.08

RECEIVED

NOV 12 2009

KCC WICHITA

Trilobite Testing, Inc

PO Box 1733 Hays, KS 67601

ph: 785-625-4778 fax: 785-625-5620



**TRILOBITE
TESTING, INC**

DRILL STEM TEST REPORT

TOOL DIAGRAM

Murfin Drilling Co. Inc.
250 N Water Ste. 300 Wichita Ks. 67202

ATTN: Rocky Milford

Neoma A #1-17
17 33 20 Comanche KS
Job Ticket: 34089 DST#: 2
Test Start: 2009.09.08 @ 13:45:00

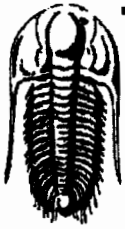
Tool Information

Drill Pipe:	Length: 4970.00 ft	Diameter: 3.80 inches	Volume: 69.72 bbl	Tool Weight: 2000.00 lb
Heavy Wt. Pipe:	Length: 0.00 ft	Diameter: 0.00 inches	Volume: 0.00 bbl	Weight set on Packer: 25000.00 lb
Drill Collar:	Length: 186.00 ft	Diameter: 2.25 inches	Volume: 0.91 bbl	Weight to Pull Loose: 64000.00 lb
			<u>Total Volume: 70.63 bbl</u>	Tool Chased 0.00 ft
Drill Pipe Above KB:	15.00 ft			String Weight: Initial 62000.00 lb
Depth to Top Packer:	5169.00 ft			Final 62000.00 lb
Depth to Bottom Packer:	ft			
Interval between Packers:	56.00 ft			
Tool Length:	84.00 ft			
Number of Packers:	2	Diameter: 6.75 inches		

Tool Comments:

Tool Description Length (ft) Serial No. Position Depth (ft) Accum. Lengths

Change Over Sub	1.00	CONFIDENTIAL NOV 10 2009		5142.00		
Shut In Tool	5.00			5147.00		
Hydraulic tool	5.00			5152.00		
Jars	5.00	KCC		5157.00		
Safety Joint	3.00			5160.00		
Packer	5.00			5165.00	28.00	Bottom Of Top Packer
Packer	4.00			5169.00		
Stubb	1.00			5170.00		
Perforations	1.00			5171.00		
Recorder	0.00	8355	Inside	5171.00		
Recorder	0.00	6773	Inside	5171.00		
Change Over Sub	1.00			5172.00		
Drill Pipe	31.00			5203.00		
Change Over Sub	1.00			5204.00		
Perforations	18.00			5222.00		
Bullnose	3.00			5225.00	56.00	Bottom Packers & Anchor
Total Tool Length:	84.00					



**TRILOBITE
TESTING, INC**

DRILL STEM TEST REPORT

FLUID SUMMARY

Murfin Drilling Co. Inc.
250 N Water Ste. 300 Wichita Ks. 67202
ATTN: Rocky Milford

Neoma A #1-17
17 33 20 Comanche KS
Job Ticket: 34089 DST#: 2
Test Start: 2009.09.08 @ 13:45:00

Mud and Cushion Information

Mud Type: Gel Chem	Cushion Type:	Oil API:	deg API
Mud Weight: 9.00 lb/gal	Cushion Length: ft	Water Salinity:	ppm
Viscosity: 62.00 sec/qt	Cushion Volume: bbl		
Water Loss: 5.19 in ³	Gas Cushion Type:		
Resistivity: ohm.m	Gas Cushion Pressure: psig		
Salinity: 5000.00 ppm			
Filter Cake: inches			

Recovery Information

Recovery Table

Length ft	Description	Volume bbl
40.00	100% mud	0.197

Total Length: 40.00 ft Total Volume: 0.197 bbl
 Num Fluid Samples: 0 Num Gas Bombs: 0 Serial #:
 Laboratory Name: Laboratory Location:
 Recovery Comments:

