

IMPORTANT
Kans. Geo. Survey request
samples on this well.

15-025-20232

KANSAS DRILLERS LOG

S. 29 T. 33 R. 21 ^N/_W
Loc. C S2 SE
County Clark

API No. 15 — 025 — 20,232
County Number

Operator
Welner Petroleum Company

Address
1733 Vickers KSB&T Bldg. Wichita, Kansas 67202

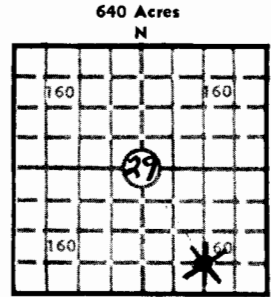
Well No. #2 Lease Name Bouziden

Footage Location
660 feet from ~~SSB~~ (S) line 1320 feet from (E) ~~(W)~~ line

Principal Contractor Gabbert-Jones, Inc. Geologist Mike Mitchell

Spud Date October 11, 1978 Total Depth 5431' P.B.T.D. 5425'

Date Completed November 29, 1978 Oil Purchaser UPG, Inc.



Locate well correctly
Elev.: Gr. 1887
DF KB 1892

CASING RECORD

Report of all strings set — surface, intermediate, production, etc.

Purpose of string	Size hole drilled	Size casing set (in O.D.)	Weight lbs/ft.	Setting depth	Type cement	Sacks	Type and percent additives
Surface	12 1/4"	8-5/8"	24#	530'	common	475sx.	2% Gel, 3% CC
Production	7-7/8"	4 1/2"	10.5#	5430'	50/50 Poz. 60/40 Poz.	25sx. 100sx.	18% salt & .75% CFR2

LINER RECORD

PERFORATION RECORD

Top, ft.	Bottom, ft.	Sacks cement	Shots per ft.	Size & type	Depth interval
-----	-----	-----	2 holes/ft	strip jets	5409-11, 5414-16
TUBING RECORD			2 holes/ft		
Size	Setting depth	Packer set at			
2-3/8"	5403'	None			

ACID, FRACTURE, SHOT, CEMENT SQUEEZE RECORD

Amount and kind of material used	Depth interval treated
500 gal. MCA	5409-11, 5414-16
1000 gal. 7 1/2% MCA	5409-11, 5414-16
Frac w/100sx. 20/40 sd. w/foam & nitrogen	5409-11, 5414-16

INITIAL PRODUCTION

Date of first production <u>?</u>	Producing method (flowing, pumping, gas lift, etc.) <u>pumping</u>			
RATE OF PRODUCTION PER 24 HOURS	Oil bbls.	Gas MCF	Water bbls.	Gas-oil ratio CFPB
Disposition of gas (vented, used on lease or sold) <u>sold</u>			Producing interval (s) <u>5400-11 & 5414-16</u>	

INSTRUCTIONS: As provided in KCC Rule 82-2-125, within 90 days after completion of a well, one completed copy of this Drillers Log shall be transmitted to the State Geological Survey of Kansas, 4150 Monroe Street, Wichita, Kansas 67209. Copies of this form are available from the Conservation Division, State Corporation Commission, 3830 So. Meridian (P.O. Box 17027), Wichita, Kansas 66217. Phone AC 316-522-2206. If confidential custody is desired, please note Rule 82-2-125. Drillers Logs will be on open file in the Oil and Gas Division, State Geological Survey of Kansas, Lawrence, Kansas 66044.

Operator

Welner Petroleum Company

DESIGNATE TYPE OF COMP.: OIL, GAS, DRY HOLE, SWDW, ETC.:

Oil & Gas

Well No.

2

Lease Name

Bouziden

s 29 T 33 R 21^{XXX}
W

WELL LOG

Show all important zones of porosity and contents thereof; cored intervals, and all drill-stem tests, including depth interval tested, cushion used, time tool open, flowing and shut-in pressures, and recoveries.

SHOW GEOLOGICAL MARKERS, LOGS RUN, OR OTHER DESCRIPTIVE INFORMATION.

FORMATION DESCRIPTION, CONTENTS, ETC.	TOP	BOTTOM	NAME	DEPTH
DST#1: 60/75 75/90 GTS in 8 min. GA 357 MCFG 1st op. 436 MCF decrease to 412 on 2nd op. Rec. 180' HGCM, 120' HG&SOCM 300' HGOCM SIP 544/525 FP 60/208	5330	5431	<u>LOG TOPS</u> Lansing B.K.C. Cherokee Morrow Sh Morrow A Sd Morrow B Sd B Sd Por B. "B" SD LTD	4478 5026 5209 5331 5364 5398 5404 5420 5427
DST #2: 25/30 Rec. 6' M SIP 356 FP 32/32 BHT 110°	4897	4947		

USE ADDITIONAL SHEETS, IF NECESSARY, TO COMPLETE WELL RECORD.

Date Received

Wilber A Berg
Signature

Wilber Berg

Title

March 1, 1979

Date