

35	33	29W	2425 DE
Company		Skelly Oil Co.	
Farm Name		P. H. Mohler No. 1	
TOPS	DEPTH	LOG	DATUM
Apk			SW SW SW
H	4379	4381	Miss 6000' test
Tr			
Dp			
Bl			
L	4541	4541	Geol.
K	5181	5181	Contr.
BKC			Co. Tools
C.	5422	5418	Pool
C.	5719	5714	
M. Chemt	5802	5802	
M.			
K.			
Mo.			
Me.			
V.			
S.			
B.			
A.			
R.			
Pe.			
G.			
TD	5906		

Date Comm. 8/6 Texas & SDX - DHM WH7-DC55  
 Location AUG 21 57 B 2 992/50 SX AUG 28 57 X  
 2987 SEP 4 57 X 4085 SEP 11 57  
 DST 5191-5204 1hr G/25"  
 TSTM sec 125' UGG OCMD  
 90' H GC 6 MD CSW 360'  
 GC SW DST 5269 5257-69  
 50" G/25" ga 416 MCF 15"  
 62 MCF 130" TSTM 50"  
 Pull Tube SEP 18 57 X

COMPLETE

OCT 23 57

FORM 513-1 SUNRAY

DST 5801-5906 up lhr rec 50' m  
 FP 75-95 BHP 945 RTD  
 5906 running pipe

Backlogs

245' MCO FP 150-245  
 BHP 1340/20' LRA 5747-78  
 26" 5016 DST 5741-78 1hr  
 G/2" ga 1.250 MCF 118'  
 1.710 MCF 160" sec 60' oil  
 90' OM 60' GCSW FP 150  
 -230 BHP 1995/20" B5855  
 SEP 25 57 X 5 1/2" 5906/200 CO 5884  
 Penf 54/5874-83 NS 500A  
 \$ 260 ph 925 TSTM 21 \$  
 1200 ph 925 TSTM 2 hrs 55G  
 Prod DST 5742-50 DST 5861-5906  
 1hr 50' M FP 75-95 BHP 945/30  
 Log 5 1/2" 5906/200 CO 5884  
 54/5874-83 500A \$1230 ph  
 55G 3 hrs 21 \$1230 maw  
 55G 7 hrs BHP 5804  
 520/5742-50 OCT 2 57 X 18/5782-95  
 NS 500 MCA \$ dry \$ 7 hrs  
 700 MCF 950 frac 6x6 \$  
 8 hrs 200 MCF 550 \$12 hrs  
 ga 700 MCF 550 PB 5761 X  
 44/5742-50 flo 5 1/2" 55g 2,400  
 MCF 581 ph 209' W 4 hrs Net  
 frac 2x2 51 2 hrs  
 35-33-29W SWSW SW

FORM 513-1 SUNRAY

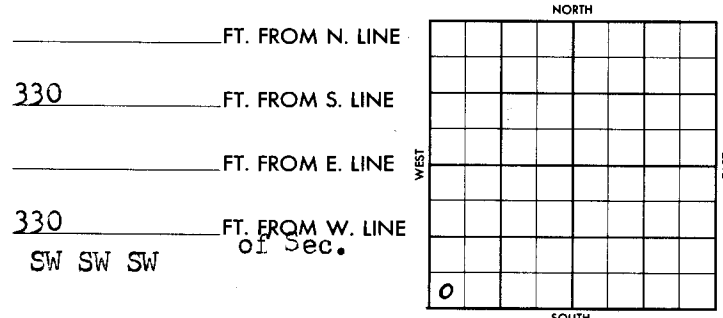
Fl 903.669 MCF 2090 W 3 hrs  
 51-10 hrs ga 2.458 MCF 57.55  
 B0+2090 W 13 hrs PB 5278  
 44/5259-67 18 BOP 500 MCA  
 \$ 170 B0 8 hrs  
 \$ 75 BOP in 5 hrs \$ 15 BOP 490 W  
 8 hrs BOP 5 hrs OCT 9 57 BOP  
 OCT 16 57 X OCT 23 57 X 50 B07  
 8 hrs 5 hrs test 320  
 BOP + 15 BOP PD  
 43 BOP +  
 P106 B0 4.4 BOP 8 hrs  
 PH4  
 320 B0 + 12 BOP 24 hrs  
 ga 420 2090 W 5259-67  
 PB 5278 TD 5906

SEC. 35 TWP. 33 S R. 29 W

WELL NO. #1 P. H. Mohler FARM

COMPANY Skelly Oil Co.

CONTRACTOR Co. tools



SDX-DHC-\$4500.00 (S-14116) Texas Co.-DHM

1957 ELEVATION 2495' DF REPORT (WH7-DC55) ✓

8/6 Miss. Test appx 6000'  
To be commenced by September 1, 1957  
To be completed by October 1, 1957  
(See copy DHC Agrt 8-6-57)  
Miss. 6000' test

8/14 Location (FR Tkt)

8/16 MI & RURT (Card-Skelly Oil)

8/18 Spud 8-17-57  
Drlg. 450' "

8/19 Drlg. 12 1/4" hole to 992'  
Set 8-5/8" @ 992 w/300 sx. cmt.  
TD 992' WOC. "

8/20 NR

8/21 Drlg. 1775' "

8/22 Drlg. 2180' "

8/23 Drlg. 2435' "

8/24 Drlg. 2645' "

8/26 Drlg. 2987' "

8/27 Drlg. 3170' "

8/28 Drlg. 3325' "

8/29 Drlg. 3565' "

8/30 Drlg. 3830' "

8/31 Drlg. 4085' "

9/3 Drlg. 4565' T. Heeb Sh 4379'  
Top Lans. Lime 4541' "

**OVER**

1957  
 9/4 Drlg. 4800' (Card-Skelly Oil Co.)  
 9/5 Drlg. 4915' "  
 9/6 Drlg. 5015' "  
 (9/8 Top Marmaton Lime 5181'  
 Drilled to 5204'. Ran DST #1 w/pkr  
 set @ 5191', open 1 hr, gas in 25",  
 good blow decreasing to weak blow  
 at end of test, too small to gauge,  
 rec 135' very GC & sli OCM, 90' MCSW,  
 Heavily GC, 360' GCSW. Now prep to  
 drill deeper. TD 5204'(Skelly Oil Co.)  
 (9/9 TD 5269'. Ran DST #2, w/pkr set @5257'  
 open 50", gas in 2½", After 5", gas  
 gauged 416 MCF, 20", gauged 139 MCF,  
 30", gauged 62 MCF and at end of 50",  
 gas too small to gauge. Now preparing  
 to pull packer to check recovery.  
 (Skelly Oil Co. Rpt)  
 9/10 Pulled Packer on DST #2, rec 630'  
 clean oil (Grav. 42) and 420'  
 muddy oil. BHP 1240# in 20".  
 Now drlg. @ 5350' "  
 9/11 Lost circ. @ 5420'. Regained  
 circ. Now Drlg. @ 5440' "  
 9/12 Drlg. 5555' "  
 9/13 Drlg. 5650' "  
 (9/14 Top Cherokee 5422', Top Morrow  
 shale 5718'  
 TD 5747'. Prep to core ahead. "  
 (9/15 T/Morrow Sand 5745'  
 C/5747-5778', rec 26' (top 4' sand,  
 fair to good por & permeability,  
 good odor, stained & visible oil  
 saturation, bleeding gas, good fluor,  
 sand is bentonitic, 1' conglomerate,  
 tite, no shows, 1' sd & mud stone lense  
 tite, no shows, 2½' sh, 1' sd, tite,  
 NS, 3' sh, 2½' sd, tite, no shows,  
 11' shale.)  
 Ran Halliburton DST #3, 5741-78' open  
 1 hr, gas gauged 1,710 MCF, rec 60'  
 free oil, 90' oily mud, 60' GCSW.  
 IFP 150# FFP 230#. BHP 1875# 20"  
 T/Chester 5802' (Card-Skelly)  
 9/16 Drlg. @ 5855' (Card-Skelly Oil)  
 (9/17 Drilled to 5906'. Ran Schl. Elec. Log  
 Now prep to run DST 5861-5906'  
 TD 5906' (Card-Skelly Oil)

---

1957  
9/18

Ran Halliburton DST #4, packer set @ 5861', used 45' anchor, open 1 hr, good blow for 1 hr, no show gas, rec 20' sli GCM. IFP 75# BFP 95# BHP 945# in 30". Set & cemented 5½" csg. @ 5906' w/200 sks of cement. Shut down. WOC. TD 5906' (Card-Skelly

9/20

TD 5906'. Ran Halliburton temp. survey. Found appx top of cement @ 4810'. Shut down for CT "

9/21

TD 5906'. MI and RUCT. Swbd hole dry. 5½" OD csg. tested dry. Now drlg. cmt. ~~plug @ 5850'~~ "

(9/22

Drld. cement & CO to 5884' Perf 5½" csg. 5874-83 w/54 holes, no shows Acidized w/500 gals MA. Swbd hole dry. Swbd 3 hrs., 2 BOPH, gas too small to gauge. Re-acidized w/2000 gals 15% acid. Swbd 7 hrs. 12 BO, light show gas. Prep to perf 5742-5750'. TD 5906' (Card-Skelly Oil)

9/24

Received copy Schl. Laterolog survey. Given to SA Shannon, Div. Geolo. Wichita District.

(9/24

TD 5906' PBDT 5814'  
Set 5½" Baker BP @ 5818'. PB w/5 gals cal-seal from 5818-5814'. Perf 5½" csg 5782-5785 w/18 holes and from 5794-5799' w/30 holes, no show gas or oil. Treated thru 5½" csg. w/500 gals. Hall. MCA 15% acid, time 35" max. CP 1000#. Used 140 bbls wtr. to flush. Swbd hole dry. Swbd 7 hrs. Gas gauged 700 MCF w/good show oil. Ran diesel frac thru 5½" csg. w/6000 gals. diesel gel, 6000# sand. Max CP 2850#. time 6", used 140 bbls. wtr. to flush. Prep to swab & test. (Card-Skelly Oil)

(9/25

TD 5906' PBDT 5761'  
Swbd & Tested 8 hrs, Gas Gauged 600 MCF w/light show of oil. Then swbd & tested 12 hrs, Gas Gauged 700 MCF w/light show oil. Set BP @ 5765' PB w/5 gals cal-seal from 5765-5761' Perf 5½" csg. from 5742-5750' w/48 holes. SI to press. up. Prep to flow & test. (Card-Skelly Oil)

1957  
9/26

TD 5906' PBDT 5761'  
F/thru 5½" csg. 4 hrs. Gas gauged 2400 MCF w/5 bbls fluid per hr. 20% wtr. Ran Hall. Diesel-frac thru 5½" csg. @ 5742-50' w/2000 gals diesel gel. 2000# sand. Max. CP 2300# Used 80 bbls oil & 60 bbls wtr. to flush. SI 2 hrs. Swbd & well started flowing. Flow=d thru 5½" csg. 3 hrs. 3,669 MCF gas, no gauged on oil w/20% wtr. SI 10 hrs. SICP 1475# Prep to PB & test Upper zone. (Card-Skelly Oil Co.)

9/27

TD 5906' PBDT 5761'  
SI 7 hrs. CP 1625# Flowed thru 5½" csg & thru test separator 13 hrs. 38/64" ck. FCP 190#. Gas Gauged 2,458 MCF and 57.55 bbls oil. Gravity 32. Showing 20% wtr. Will continue to flow and test. (Card-Skelly Oil)

9/28

TD 5906'. Set BP @ 5282'. PB w/5 gals Cal-seal 5282-5278'. Perf 5½" csg. 5259-67'/48 holes. Let set 1 hr. Pulled swab 1 time, 8 BO w/light show gas. Acidized w/500 gals MCA. (Skelly)

9/29

TD 5906'. ~~XXXXXX~~. Ran 2½" tbg. Swabbed thru 2½" tbg. 8 hrs. 170 BO & swbd hold down. Swbd 5 hrs. 75 BOPH. (Card-Skelly)

9/30

TD 5906' PBDT 5278'  
Swbd & tested thru tbg. 8 hrs. 15 BO showing 4% wtr. PH. SD to install Pumping equipment and MOCT. (Skelly)

10/17

TD 5906' ~~XX~~ PBDT 5278' ~~POP~~ <sup>POP</sup> 8 hrs. 106.79 BO & 4.44 BW to establish S.C.C. potential of 320 bbls per day. Allowable 1/3 BPD. Producing formation: Marmaton. Completed 10-16-57 (Final Report)

10/23

TD 5906' PB 5278'  
POP. P/106 BO & 4.44 BW ~~24~~ 8 hrs. Potential: 320 BO + 12 BW 24 hrs. Grav. 12. Marmaton 5259-67' (Scout Comp. Ticket)

**COMPLETED**

11/12 (Advised Contract Section- Comp. Oil) ✓

W. W.  
NOV 17 1923

FORM 513 SUNRA

County Moore Elev. \_\_\_\_\_  
 Sec. 35 Twp. 33 Rge. 29W  
 Company Shelly Oil Co.  
 Farm Name P. H. Mohler No. 1

TOPS	DEPTH	LOG	DATUM	Loc. in Sec.
Anh.				SW SW SW
Ip.				
H.				Miss 6000' test
Tr.				
Dg.				
Bl.				
L.				Geol. _____
K.C.				Contr. _____
B.K.C.				
Ce.				Co. Tools
C.				
M.				Pool
M.				
K.				
Mz.				
Me.				
V.				
S.				
S.				
A.				
R.				
PC.				
G.				
T.D.				

FIRST REPORT

AUG 14 1927

Date Comm. Texas & SDX - DHM

Location \_\_\_\_\_  
 \_\_\_\_\_  
 \_\_\_\_\_  
 \_\_\_\_\_  
 \_\_\_\_\_  
 \_\_\_\_\_  
 \_\_\_\_\_

~~35~~