



Home Office: Wichita, Kansas 67201

P.O. Box 1599

(316) 262-5861

Company Rains & Williamson Oil Co., Inc. Lease & Well No. #2 Frazier
 Elevation 1257 KellyBushing Formation Kansas City Effective Pay -- Ft. Ticket No. 17742
 Date 1/22/83 Sec. 18 Twp 33S Range 3W County Sumner State Kansas
 Test Approved by Mike Engelbrecht Western Representative Kenny Kirkendall

Formation Test No. 1 Interval Tested from 3647 ft. to 3661 ft. Total Depth 3661 ft.
 Packer Depth 3647 ft. Size 6 3/4 in. Packer Depth -- ft. Size - in.
 Packer Depth 3642 ft. Size 6 3/4 in. Packer Depth --- ft. Size - in.
 Depth of Selective Zone Set -

Top Recorder Depth (Inside) 3652 ft. Recorder Number 2605 Cap. 4150
 Bottom Recorder Depth (Outside) 3658 ft. Recorder Number 1049 Cap. 4250
 Below Straddle Recorder Depth - ft. Recorder Number - Cap. -

Drilling Contractor Rains & Williamson Drlg. Rig #3 Drill Collar Length 420 I. D. - in.
 Mud Type chemical Viscosity 42 Weight Pipe Length - I. D. - in.
 Weight 9.3 Water Loss 16.8 cc. Drill Pipe Length - I. D. - in.
 Chlorides 6,000 P.P.M. Test Tool Length 20 ft. Tool Size 5 1/2 in.
 Jars: Make -- Serial Number -- Anchor Length 14 ft. Size 5 1/2 in.
 Did Well Flow? No Reversed Out No Surface Choke Size 3/4 in. Bottom Choke Size 3/4 in.
 Main Hole Size 7 7/8 in. Tool Joint Size 4 1/2 XH in.

Blow: Fair blow decreasing to weak and died in fifteen minutes; good blow throughout final flow period.

Recovered 835 ft. of gas in pipe
 Recovered 35 ft. of mud gas cut
 Recovered 30 ft. of heavy oil and gas cut mud 15% oil;35% mud;50% gas
 Recovered ft. of
 Recovered ft. of TIGHT HOLE

Remarks:

Time Set Packer(s) 8:25 A.M. P.M. Time Started Off Bottom ---- A.M. P.M. Maximum Temperature 116°
 Initial Hydrostatic Pressure 1870 P.S.I. (A)
 Initial Flow Period 30 Minutes (B) 61 * P.S.I. to (C) 96 * P.S.I.
 Initial Closed In Period 30 Minutes (D) 241 P.S.I.
 Final Flow Period 90 Minutes (E) 54 P.S.I. to (F) 54 P.S.I.
 Final Closed In Period 63 Minutes (G) 1019 P.S.I.
 Final Hydrostatic Pressure 1855 P.S.I. (H)

WESTERN TESTING CO., INC.

Pressure Data

Date 1/22/83

Test Ticket No. 17742

Recorder No. 2605

Capacity 4150

Location 3652 Ft.

Clock No. ---

Elevation 1257 Kelly Bushing

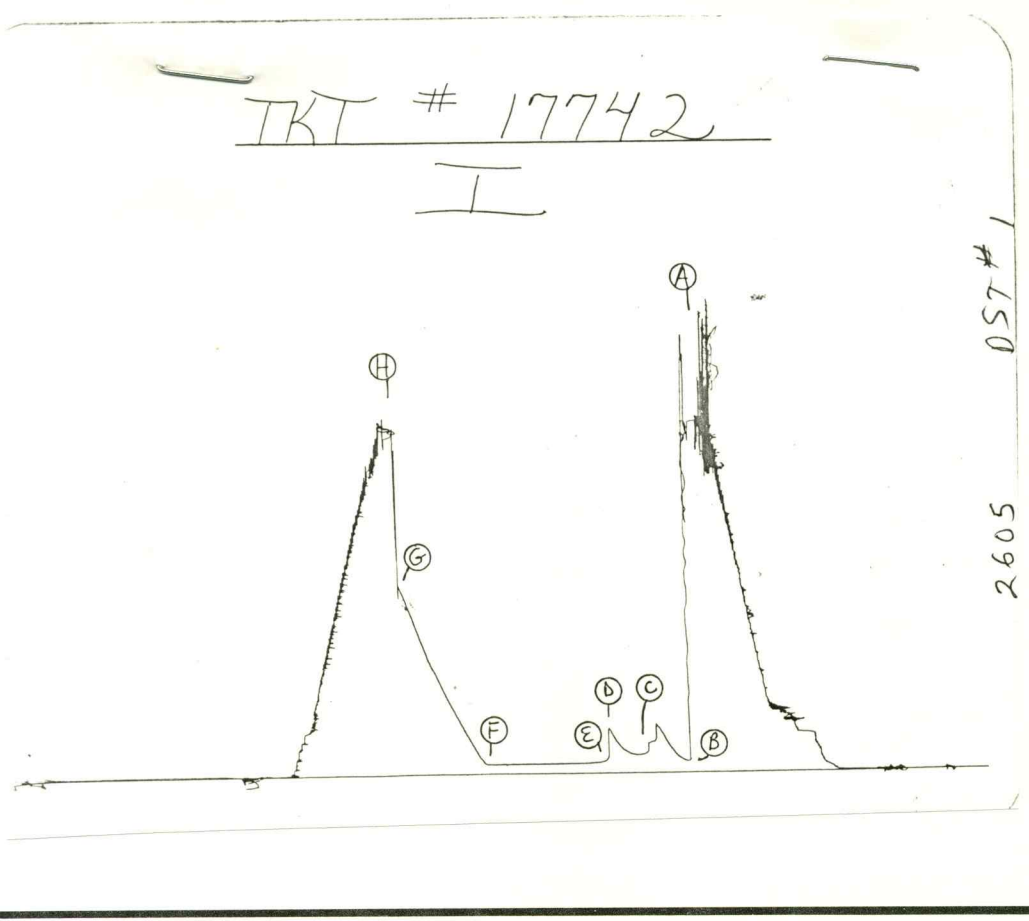
Well Temperature 116 °F

Point	Pressure		Time Given	Time Computed
A Initial Hydrostatic Mud	<u>1870</u> P.S.I.	Open Tool	<u>8:25</u> M	
B First Initial Flow Pressure	<u>61*</u> P.S.I.	First Flow Pressure	<u>30</u> Mins.	<u>30</u> Mins.
C First Final Flow Pressure	<u>96*</u> P.S.I.	Initial Closed-in Pressure	<u>30</u> Mins.	<u>30</u> Mins.
D Initial Closed-in Pressure	<u>241</u> P.S.I.	Second Flow Pressure	<u>90</u> Mins.	<u>90</u> Mins.
E Second Initial Flow Pressure	<u>54</u> P.S.I.	Final Closed-in Pressure	<u>60</u> Mins.	<u>63</u> Mins.
F Second Final Flow Pressure	<u>54</u> P.S.I.			
G Final Closed-in Pressure	<u>1019</u> P.S.I.			
H Final Hydrostatic Mud	<u>1855</u> P.S.I.			

* PRESSURES QUESTIONABLE DUE TO PLUGGING ACTIO

PRESSURE BREAKDOWN

Point Mins.	First Flow Pressure		Initial Shut-In		Second Flow Pressure		Final Shut-In	
	Breakdown:	Inc.	Breakdown:	Inc.	Breakdown:	Inc.	Breakdown:	Inc.
	of <u>6</u> mins. and a		of <u>10</u> mins. and a		of <u>18</u> mins. and a		of <u>21</u> mins. and a	
	final inc. of <u>0</u> Min.		final inc. of <u>0</u> Min.		final inc. of <u>0</u> Min.		final inc. of <u>0</u> Min.	
Point Mins.	Press.	Point Minutes	Press.	Point Minutes	Press.	Point Minutes	Press.	
P 1 <u>0</u>	<u>61 *</u>	<u>0</u>	<u>96 *</u>	<u>0</u>	<u>54</u>	<u>0</u>	<u>54</u>	
P 2 <u>5</u>	<u>72 *</u>	<u>3</u>	<u>96</u>	<u>3</u>	<u>54</u>	<u>3</u>	<u>86</u>	
P 3 <u>10</u>	<u>99 *</u>	<u>6</u>	<u>96</u>	<u>6</u>	<u>54</u>	<u>6</u>	<u>123</u>	
P 4 <u>15</u>	<u>148*</u>	<u>9</u>	<u>98</u>	<u>9</u>	<u>54</u>	<u>9</u>	<u>159</u>	
P 5 <u>20</u>	<u>211*</u>	<u>12</u>	<u>101</u>	<u>12</u>	<u>54</u>	<u>12</u>	<u>198</u>	
P 6 <u>25</u>	<u>262*</u>	<u>15</u>	<u>111</u>	<u>15</u>	<u>54</u>	<u>15</u>	<u>239</u>	
P 7 <u>30</u>	<u>96 *</u>	<u>18</u>	<u>125</u>	<u>18</u>	<u>54</u>	<u>18</u>	<u>277</u>	
P 8		<u>21</u>	<u>148</u>	<u>21</u>	<u>54</u>	<u>21</u>	<u>318</u>	
P 9		<u>24</u>	<u>178</u>	<u>24</u>	<u>54</u>	<u>24</u>	<u>360</u>	
P10		<u>27</u>	<u>216</u>	<u>27</u>	<u>54</u>	<u>27</u>	<u>402</u>	
P11		<u>30</u>	<u>241</u>	<u>30</u>	<u>54</u>	<u>30</u>	<u>449</u>	
P12					<u>54</u>	<u>33</u>	<u>497</u>	
P13					<u>54</u>	<u>36</u>	<u>542</u>	
P14					<u>54</u>	<u>39</u>	<u>582</u>	
P15					<u>54</u>	<u>42</u>	<u>632</u>	
P16					<u>54</u>	<u>45</u>	<u>690</u>	
P17					<u>54</u>	<u>48</u>	<u>748</u>	
P18					<u>54</u>	<u>51</u>	<u>808</u>	
P19					<u>54</u>	<u>54</u>	<u>863</u>	
P20						<u>57</u>	<u>923</u>	
						<u>60</u>	<u>977</u>	
						<u>63</u>	<u>1019</u>	



This is an actual photograph of recorder chart.

POINT	PRESSURE		
	Field Reading	Office Reading	
(A) Initial Hydrostatic Mud	1859	1870	PSI
(B) First Initial Flow Pressure	Plugged	61 *	PSI
(C) First Final Flow Pressure	Plugged	96 *	PSI
(D) Initial Closed-in Pressure	232	241	PSI
(E) Second Initial Flow Pressure	42	54	PSI
(F) Second Final Flow Pressure	42	54	PSI
(G) Final Closed-in Pressure	975	1019	PSI
(H) Final Hydrostatic Mud	1859	1855	PSI



Home Office: Wichita, Kansas 67201

P.O. Box 1599

(316) 262-5861

Company Rains & Williamson Oil Co., Inc. Lease & Well No. #2 Frazier
 Elevation 1257 Kelly Bushing Formation Mississippi Effective Pay - Ft. Ticket No. 13841
 Date 1/25/83 Sec. 18 Twp. 33S Range 3W County Sumner State Kansas
 Test Approved by Mike Engelbrecht Western Representative Allen Edgington

Formation Test No. 2 Interval Tested from 4096 ft. to 4104 ft. Total Depth 4104 ft.
 Packer Depth 4091 ft. Size 6 3/4 in. Packer Depth - ft. Size - in.
 Packer Depth 4096 ft. Size 6 3/4 in. Packer Depth - ft. Size - in.
 Depth of Selective Zone Set -

Top Recorder Depth (Inside) AP 4084 ft. Recorder Number 5666 Cap. 3950
 Bottom Recorder Depth (Outside) 4100 ft. Recorder Number 1564 Cap. 6600
 Below Straddle Recorder Depth - ft. Recorder Number - Cap. -

Drilling Contractor Rains & Williamson Rig #3 Drill Collar Length 418 I. D. 2 1/4 in.
 Mud Type Chemical Viscosity 45 Weight Pipe Length - I. D. - in.
 Weight 9.2 Water Loss 8.8 cc. Drill Pipe Length 3661 I. D. 3.8 in.
 Chlorides 6500 P.P.M. Test Tool Length 25 ft. Tool Size 5 1/2 in.
 Jars: Make - Serial Number - Anchor Length 8 ft. Size 5 1/2 in.
 Did Well Flow? Yes Reversed Out No Surface Choke Size 3/4 in. Bottom Choke Size 3/4 in.
 Main Hole Size 7 7/8 in. Tool Joint Size 4 1/2 XH in.

Blow: Strong blow throughout test. Gas to surface in 30 minutes

Recovered 90 ft. of watery mud
 Recovered 60 ft. of slightly oil cut muddy water - 5% oil
 Recovered 120 ft. of slightly oil cut water - 2% oil
 Recovered ft. of Chlorides 47,000 PPM
 Recovered ft. of

Remarks:

Time Set Packer(s) 1:30 A.M. Time Started Off Bottom 4:30 P.M. Maximum Temperature 123
 Initial Hydrostatic Pressure (A) 2016 P.S.I.
 Initial Flow Period Minutes 30 (B) 74 P.S.I. to (C) 77 P.S.I.
 Initial Closed In Period Minutes 30 (D) 1562 P.S.I.
 Final Flow Period Minutes 60 (E) 87 P.S.I. to (F) 87 P.S.I.
 Final Closed In Period Minutes 63 (G) 1593 P.S.I.
 Final Hydrostatic Pressure (H) 1984 P.S.I.



Home Office: Wichita, Kansas 67201

P.O. Box 1599

(316) 262-5861

GAS FLOW REPORT

Date 1/25/83 Ticket 13841 Company Rains & Williamson Oil Co., Inc.
 Well Name and No. #2 Frazier Dst No. 2 Interval Tested 4096-4104
 County Sumner State Kansas Sec. 18 Twp. 33S Rg. 3W

Time Gauge Pre-Flow	Time Gauge in Min.	P.S.I. on Merla Orifice Well Tester	P.S.I. on Pitot Tester	P.S.I. on Side Static Tester	P.S.I. on U-Tube Tester	Description of Flow
PRE FLOW						
						Gas to surface in 30 minutes on shut-in just before second open.

SECOND FLOW						
	35 Min	7" water	1/2" Orifice			16,700 C.F.P.D.
	40 Min	22" water	1/2" Orifice			29,400 C.F.P.D.
	45 Min	24" water	1/2" Orifice			30,700 C.F.P.D.
	50 Min	16" water	3/4" Orifice			56,800 C.F.P.D.
	55 Min	6" water	3/4" Orifice			34,700 C.F.P.D.
	60 Min	6" water	3/4" Orifice			34,700 C.F.P.D.
	65 Min	8" water	3/4" Orifice			40,000 C.F.P.D.
	70 Min	8" water	3/4" Orifice			40,000 C.F.P.D.
	75 Min	8" water	3/4" Orifice			40,000 C.F.P.D.
	80 Min	8" water	3/4" Orifice			40,000 C.F.P.D.
	85 Min	8" water	3/4" Orifice			40,000 C.F.P.D.
	90 Min	8" water	3/4" Orifice			40,000 C.F.P.D.

GAS BOTTLE

Serial No. - Date Bottle Filled - Date to be Invoiced 1/25/83

Requisition and Provisions for high pressure stainless steel gas bottles. Western Testing Co., Inc. shall not be liable for damage of any kind to property or personnel of the one whom gas bottle is filled or for any loss suffered or sustained directly or indirectly through the use of these bottles. By signing of this ticket showing receipt of a gas testing bottle, the undersigned agrees for himself and as agent for operator, to return this bottle to Western Testing Co., Inc. within thirty (30) days free of charge, or be invoiced in the amount of \$75.00 (total charge). Should valve or seal plug be missing or damaged beyond repair, operator shall be invoiced for repairs at our invoiced price.

All charges subject to 1% per month, equal to 12% interest per annum after 30 days from date of invoice. Any expense incurred for collection will be added to the original amount.

COMPANY'S NAME Rains & Williamson Oil Co., Inc.

Authorized by Mike Engelbrecht

WESTERN TESTING CO., INC.

Pressure Data

Date 1/25/83 Test Ticket No. 13841
 Recorder No. 1564 Capacity 6600 Location 4100 Ft.
 Clock No. - Elevation 1257 Kelly Bushing Well Temperature 123 °F

Point	Pressure		Time Given	Time Computed
A. Initial Hydrostatic Mud	<u>2016</u> P.S.I.	Open Tool	<u>1:30A</u>	<u>M</u>
B. First Initial Flow Pressure	<u>74</u> P.S.I.	First Flow Pressure	<u>30</u> Mins.	<u>30</u> Mins.
C. First Final Flow Pressure	<u>77</u> P.S.I.	Initial Closed-in Pressure	<u>30</u> Mins.	<u>30</u> Mins.
D. Initial Closed-in Pressure	<u>1562</u> P.S.I.	Second Flow Pressure	<u>60</u> Mins.	<u>60</u> Mins.
E. Second Initial Flow Pressure	<u>87</u> P.S.I.	Final Closed-in Pressure	<u>60</u> Mins.	<u>63</u> Mins.
F. Second Final Flow Pressure	<u>87</u> P.S.I.			
G. Final Closed-in Pressure	<u>1593</u> P.S.I.			
H. Final Hydrostatic Mud	<u>1984</u> P.S.I.			

PRESSURE BREAKDOWN

First Flow Pressure
 Breakdown: 6 Inc.
 of 5 mins. and a
 final inc. of 0 Min.

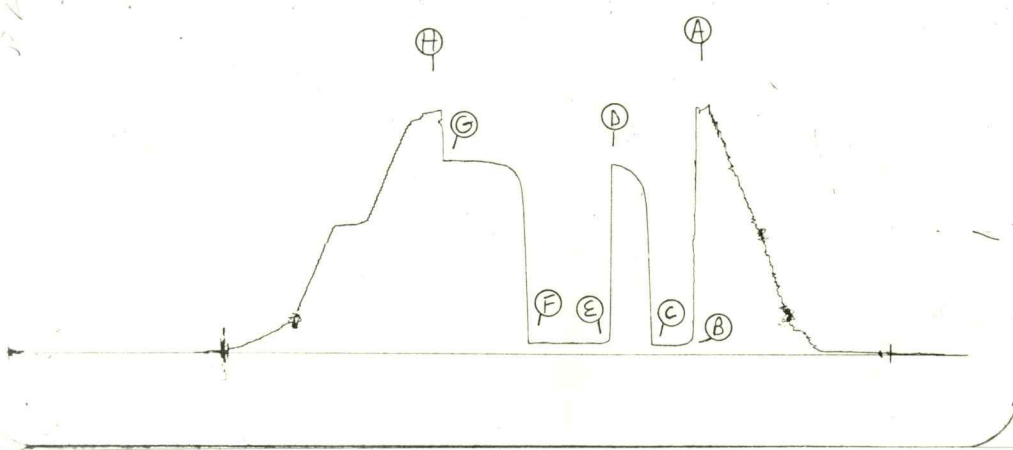
Initial Shut-In
 Breakdown: 10 Inc.
 of 3 mins. and a
 final inc. of 0 Min.

Second Flow Pressure
 Breakdown: 12 Inc.
 of 5 mins. and a
 final inc. of 0 Min.

Final Shut-In
 Breakdown: 21 Inc.
 of 3 mins. and a
 final inc. of 0 Min.

Point Mins.	Press.	Point Minutes	Press.	Point Minutes	Press.	Point Minutes	Press.
P 1 <u>0</u>	<u>74</u>	<u>0</u>	<u>77</u>	<u>0</u>	<u>87</u>	<u>0</u>	<u>87</u>
P 2 <u>5</u>	<u>74</u>	<u>3</u>	<u>839</u>	<u>5</u>	<u>87</u>	<u>3</u>	<u>1026</u>
P 3 <u>10</u>	<u>74</u>	<u>6</u>	<u>1318</u>	<u>10</u>	<u>87</u>	<u>6</u>	<u>1404</u>
P 4 <u>15</u>	<u>74</u>	<u>9</u>	<u>1414</u>	<u>15</u>	<u>87</u>	<u>9</u>	<u>1482</u>
P 5 <u>20</u>	<u>75</u>	<u>12</u>	<u>1459</u>	<u>20</u>	<u>87</u>	<u>12</u>	<u>1522</u>
P 6 <u>25</u>	<u>76</u>	<u>15</u>	<u>1498</u>	<u>25</u>	<u>87</u>	<u>15</u>	<u>1543</u>
P 7 <u>30</u>	<u>77</u>	<u>18</u>	<u>1523</u>	<u>30</u>	<u>87</u>	<u>18</u>	<u>1556</u>
P 8 _____		<u>21</u>	<u>1539</u>	<u>35</u>	<u>87</u>	<u>21</u>	<u>1564</u>
P 9 _____		<u>24</u>	<u>1555</u>	<u>40</u>	<u>87</u>	<u>24</u>	<u>1569</u>
P10 _____		<u>27</u>	<u>1559</u>	<u>45</u>	<u>87</u>	<u>27</u>	<u>1572</u>
P11 _____		<u>30</u>	<u>1562</u>	<u>50</u>	<u>87</u>	<u>30</u>	<u>1577</u>
P12 _____				<u>55</u>	<u>87</u>	<u>33</u>	<u>1580</u>
P13 _____				<u>60</u>	<u>87</u>	<u>36</u>	<u>1583</u>
P14 _____						<u>39</u>	<u>1586</u>
P15 _____						<u>42</u>	<u>1588</u>
P16 _____						<u>45</u>	<u>1590</u>
P17 _____						<u>48</u>	<u>1591</u>
P18 _____						<u>51</u>	<u>1592</u>
P19 _____						<u>54</u>	<u>1593</u>
P20 _____						<u>57</u>	<u>1593</u>
						<u>60</u>	<u>1593</u>
						<u>63</u>	<u>1593</u>

TKT # 13841
0



This is an actual photograph of recorder chart.

POINT	PRESSURE		PSI
	Field Reading	Office Reading	
(A) Initial Hydrostatic Mud	1995	2016	PSI
(B) First Initial Flow Pressure	80	74	PSI
(C) First Final Flow Pressure	80	77	PSI
(D) Initial Closed-in Pressure	1580	1562	PSI
(E) Second Initial Flow Pressure	80	87	PSI
(F) Second Final Flow Pressure	80	87	PSI
(G) Final Closed-in Pressure	1580	1593	PSI
(H) Final Hydrostatic Mud	1995	1984	PSI



Home Office: Wichita, Kansas 67201

P.O. Box 1599

(316) 262-5861

Company Rains & Williamson Oil Company, Inc. Lease & Well No. #2 Frazier
 Elevation 1257 Kelly Bushing Formation Simpson Effective Pay --- Ft. Ticket No. 16168
 Date 1/ 27 /83 Sec. 18 Twp. 33S Range 3W County Sumner State Kansas
 Test Approved by Mike Engelbrecht Western Representative Norman Allen

Formation Test No. 3 Interval Tested from 4490 ft. to 4502 ft. Total Depth 4502 ft.

Packer Depth 4490 ft. Size 6 3/4 in. Packer Depth - ft. Size - in.

Packer Depth 4485 ft. Size 6 3/4 in. Packer Depth - ft. Size - in.

Depth of Selective Zone Set -

Top Recorder Depth (Inside) 4495 ft. Recorder Number 3354 Cap. 4200

Bottom Recorder Depth (Outside) 4498 ft. Recorder Number 13268 Cap. 4225

Below Straddle Recorder Depth - ft. Recorder Number - Cap. -

Drilling Contractor Rains & Williamson Oil Drlg. Rig #3 Drill Collar Length 418 I. D. 2 1/4 in.

Mud Type Chemical Viscosity 46 Weight Pipe Length - I. D. - in.

Weight 9.3 Water Loss 11.2 cc. Drill Pipe Length 4052 I. D. 3.8 in.

Chlorides 5,000 P.P.M. Test Tool Length 20 ft. Tool Size 5 1/2 OD in.

Jars: Make - Serial Number - Anchor Length 12 ft. Size 5 1/2 ODn.

Did Well Flow? NO Reversed Out NO Surface Choke Size 3/4 in. Bottom Choke Size 3/4 in.

Main Hole Size 7 7/8 in. Tool Joint Size 4 1/2 XH in.

Blow: Weak to very weak on initial flow period; weak to very weak on final flow period.

(Flushed tool once on final flow period.)

Recovered 35 ft. of drilling mud with few specks of oil in tool

Recovered ft. of

Recovered ft. of

Recovered ft. of

Recovered ft. of

Remarks:

Time Set Packer(s)	<u>11:00</u>	<u>A.M.</u> <u>-P.M.</u>	Time Started Off Bottom	<u>1:00</u>	<u>A.M.</u> <u>-P.M.</u>	Maximum Temperature	<u>128°</u>
Initial Hydrostatic Pressure			(A)	<u>2167</u>	P.S.I.		
Initial Flow Period	Minutes	<u>30</u>	(B)	<u>22</u>	P.S.I. to (C)	<u>24</u>	P.S.I.
Initial Closed In Period	Minutes	<u>30</u>	(D)	<u>32</u>	P.S.I.		
Final Flow Period	Minutes	<u>30</u>	(E)	<u>25</u>	P.S.I. to (F)	<u>44</u>	P.S.I.
Final Closed In Period	Minutes	<u>30</u>	(G)	<u>44</u>	P.S.I.		
Final Hydrostatic Pressure			(H)	<u>2167</u>	P.S.I.		

WESTERN TESTING CO., INC.

Pressure Data

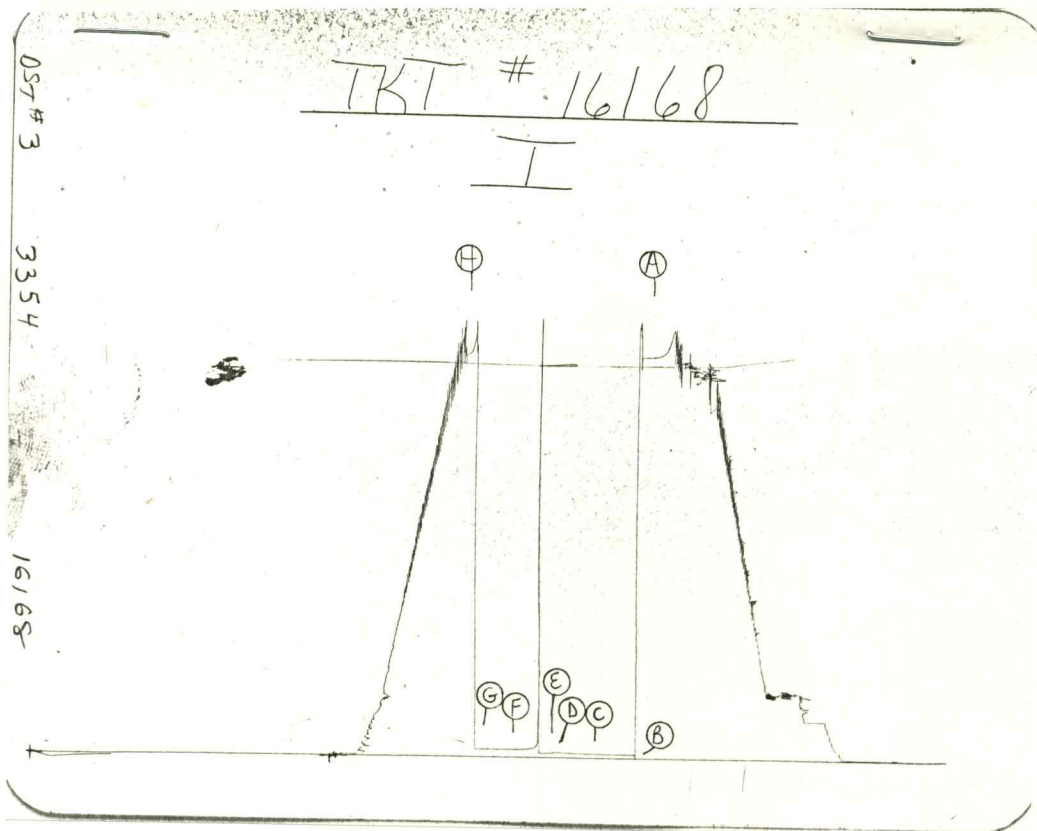
Date 1/27/83 Test Ticket No. 16168
 Recorder No. 3354 Capacity 4200 Location 4495
 Clock No. --- Elevation 1257 Kelly Bushing Well Temperature 128

Point	Pressure		Time Given	Time Computed
A. Initial Hydrostatic Mud	2167	P.S.I.	11:00A	M
B First Initial Flow Pressure	22	P.S.I.	30	Mins. 30 Mins
C First Final Flow Pressure	24	P.S.I.	30	Mins. 30 Mins
D Initial Closed-in Pressure	32	P.S.I.	30	Mins. 30 Mins
E Second Initial Flow Pressure	25	P.S.I.	30	Mins. 30 Mins
F Second Final Flow Pressure	44	P.S.I.	30	Mins. 30 Mins
G Final Closed-in Pressure	44	P.S.I.		
H Final Hydrostatic Mud	2167	P.S.I.		

PRESSURE BREAKDOWN

First Flow Pressure		Initial Shut-In		Second Flow Pressure		Final Shut-In	
Breakdown: <u>6</u> Inc.		Breakdown: <u>10</u> Inc.		Breakdown: <u>6</u> Inc.		Breakdown: <u>10</u> Inc.	
of <u>5</u> mins. and a		of <u>3</u> mins. and a		of <u>5</u> mins. and a		of <u>3</u> mins. and a	
final inc. of <u>0</u> Min.		final inc. of <u>0</u> Min.		final inc. of <u>0</u> Min.		final inc. of <u>0</u> Min.	
Point Mins.	Press.	Point Minutes	Press.	Point Minutes	Press.	Point Minutes	Press.
P 1 <u>0</u>	<u>22</u>	<u>0</u>	<u>24</u>	<u>0</u>	<u>25</u>	<u>0</u>	<u>44</u>
P 2 <u>5</u>	<u>22</u>	<u>3</u>	<u>25</u>	<u>5</u>	<u>25</u>	<u>3</u>	<u>44</u>
P 3 <u>10</u>	<u>22</u>	<u>6</u>	<u>26</u>	<u>10</u>	<u>25</u>	<u>6</u>	<u>44</u>
P 4 <u>15</u>	<u>22</u>	<u>9</u>	<u>27</u>	<u>15</u>	<u>51</u>	<u>9</u>	<u>44</u>
P 5 <u>20</u>	<u>23</u>	<u>12</u>	<u>27</u>	<u>20</u>	<u>46</u>	<u>12</u>	<u>44</u>
P 6 <u>25</u>	<u>24</u>	<u>15</u>	<u>27</u>	<u>25</u>	<u>44</u>	<u>15</u>	<u>44</u>
P 7 <u>30</u>	<u>24</u>	<u>18</u>	<u>28</u>	<u>30</u>	<u>44</u>	<u>18</u>	<u>44</u>
P 8 _____	_____	<u>21</u>	<u>29</u>	_____	_____	<u>21</u>	<u>44</u>
P 9 _____	_____	<u>24</u>	<u>30</u>	_____	_____	<u>24</u>	<u>44</u>
P10 _____	_____	<u>27</u>	<u>31</u>	_____	_____	<u>27</u>	<u>44</u>
P11 _____	_____	<u>30</u>	<u>32</u>	_____	_____	<u>30</u>	<u>44</u>
P12 _____	_____	_____	_____	_____	_____	_____	_____
P13 _____	_____	_____	_____	_____	_____	_____	_____
P14 _____	_____	_____	_____	_____	_____	_____	_____
P15 _____	_____	_____	_____	_____	_____	_____	_____
P16 _____	_____	_____	_____	_____	_____	_____	_____
P17 _____	_____	_____	_____	_____	_____	_____	_____
P18 _____	_____	_____	_____	_____	_____	_____	_____
P19 _____	_____	_____	_____	_____	_____	_____	_____
P20 _____	_____	_____	_____	_____	_____	_____	_____

Flushed tool



This is an actual photograph of recorder chart.

POINT	PRESSURE		
	Field Reading	Office Reading	
(A) Initial Hydrostatic Mud	2165	2167	PSI
(B) First Initial Flow Pressure	20	22	PSI
(C) First Final Flow Pressure	20	24	PSI
(D) Initial Closed-in Pressure	30	32	PSI
(E) Second Initial Flow Pressure	20	25	PSI
(F) Second Final Flow Pressure	40	44	PSI
(G) Final Closed-in Pressure	40	44	PSI
(H) Final Hydrostatic Mud	2165	2167	PSI



Home Office: Wichita, Kansas 67201
P.O. Box 1599 (316) 262-5861

Company Rains & Williamson Oil Company, Inc. Lease & Well No. #2 Frazier
Elevation 1257 Kelly Bushing Formation Simpson Effective Pay --- Ft. Ticker No. 16169
Date 1/28/83 Sec. 18 Twp. 33S Range 3W County Sumner State Kansas
Test Approved by Mike Engelbrecht Western Representative Norman Allen

Formation Test No. 4 Interval Tested from 4494 ft. to 4508 ft. Total Depth 4508 ft.

Packer Depth 4494 ft. Size 6 3/4 in. Packer Depth - ft. Size - in.

Packer Depth 4499 ft. Size 6 3/4 in. Packer Depth - ft. Size - in.

Depth of Selective Zone Set -

Top Recorder Depth (Inside) 4501 ft. Recorder Number 3354 Cap. 4200

Bottom Recorder Depth (Outside) 4504 ft. Recorder Number 13268 Cap. 4225

Below Straddle Recorder Depth - ft. Recorder Number - Cap. -

Drilling Contractor Rains & Williamson Oil Drlg. Rig #6 Drill Collar Length 418 I. D. 2 1/4 in.

Mud Type chemical Viscosity 46 Weight Pipe Length - I. D. - in.

Weight 9.3 Water Loss 11.2 cc. Drill Pipe Length 4056 I. D. 3.8 in.

Chlorides 5,000 P.P.M. Test Tool Length 20 ft. Tool Size 5 1/2 OD in.

Jars: Make - Serial Number - Anchor Length 14 ft. Size 5 1/2 OD in.

Did Well Flow? No Reversed Out No Surface Choke Size 3/4 in. Bottom Choke Size 3/4 in.

Main Hole Size 7 7/8 in. Tool Joint Size 4 1/2 XH in.

Blow: Weak for fifteen minutes; flushed tool once.

Recovered 10 ft. of drilling mud

Recovered ft. of

Recovered ft. of

Recovered ft. of

Recovered ft. of

Remarks:

Time Set Packer(s) 2:30 ~~P.M.~~ ^{A.M.} Time Started Off Bottom 4:30 ~~P.M.~~ ^{A.M.} Maximum Temperature 128°

Initial Hydrostatic Pressure (A) 2206 P.S.I.

Initial Flow Period Minutes 30 (B) 34 P.S.I. to (C) 34 P.S.I.

Initial Closed In Period Minutes 30 (D) 46 P.S.I.

Final Flow Period Minutes 30 (E) 37 P.S.I. to (F) 43 P.S.I.

Final Closed In Period Minutes 30 (G) 46 P.S.I.

Final Hydrostatic Pressure (H) 2121 P.S.I.

WESTERN TESTING CO., INC.

Pressure Data

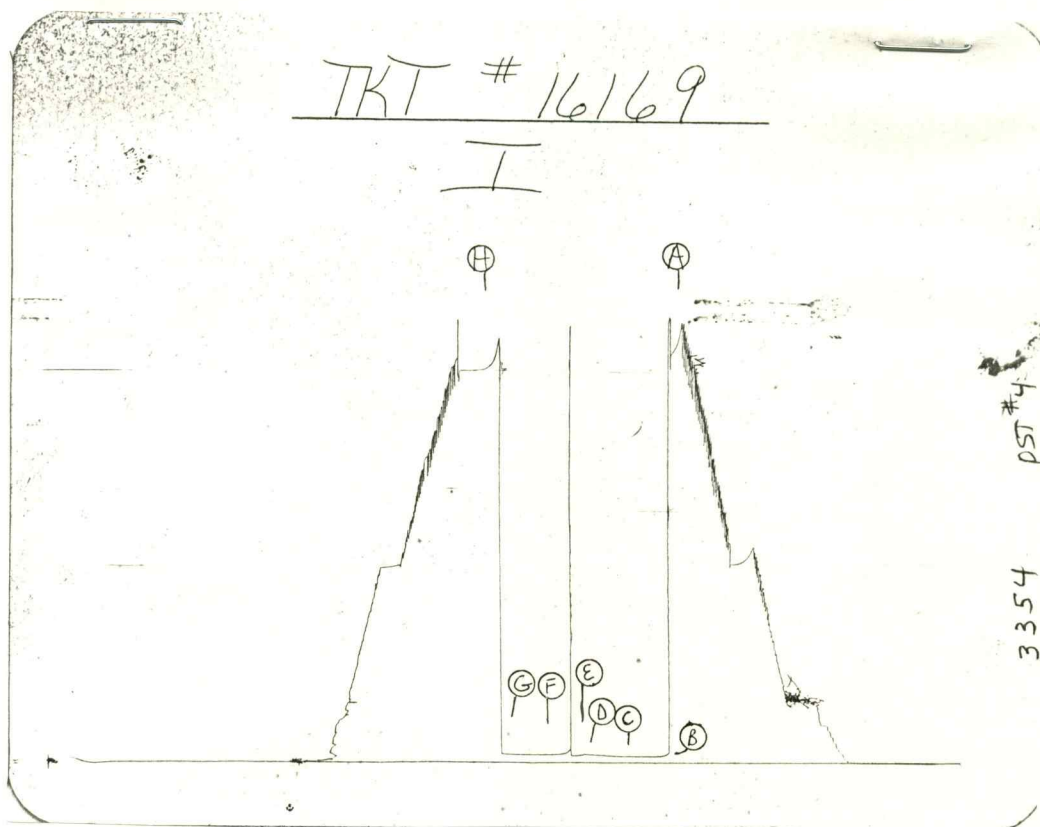
Date 1/28/83 Recorder No. 3354 Capacity 4200 Location 4501 Ft.
 Clock No. --- Elevation 1257 Kelly Bushing Well Temperature 128 °F
 Test Ticket No. 16169

Point	Pressure		Time Given	Time Computed
A Initial Hydrostatic Mud	2206	P.S.I.	2:30A	M
B First Initial Flow Pressure	34	P.S.I.	30	Mins. 30
C First Final Flow Pressure	34	P.S.I.	30	Mins. 30
D Initial Closed-in Pressure	46	P.S.I.	30	Mins. 30
E Second Initial Flow Pressure	37	P.S.I.	30	Mins. 30
F Second Final Flow Pressure	43	P.S.I.	30	Mins. 30
G Final Closed-in Pressure	46	P.S.I.		
H Final Hydrostatic Mud	2121	P.S.I.		

PRESSURE BREAKDOWN

First Flow Pressure		Initial Shut-In		Second Flow Pressure		Final Shut-In	
Breakdown: <u>6</u> Inc.		Breakdown: <u>10</u> Inc.		Breakdown: <u>6</u> Inc.		Breakdown: <u>10</u> Inc.	
of <u>5</u> mins. and a		of <u>3</u> mins. and a		of <u>5</u> mins. and a		of <u>3</u> mins. and a	
final inc. of <u>0</u> Min.		final inc. of <u>0</u> Min.		final inc. of <u>0</u> Min.		final inc. of <u>0</u> Min.	
Point Mins.	Press.	Point Minutes	Press.	Point Minutes	Press.	Point Minutes	Press.
P 1 <u>0</u>	<u>34</u>	<u>0</u>	<u>34</u>	<u>0</u>	<u>37</u>	<u>0</u>	<u>43</u>
P 2 <u>5</u>	<u>34</u>	<u>3</u>	<u>34</u>	<u>5</u>	<u>37</u>	<u>3</u>	<u>43</u>
P 3 <u>10</u>	<u>34</u>	<u>6</u>	<u>35</u>	<u>10</u>	<u>37</u>	<u>6</u>	<u>43</u>
P 4 <u>15</u>	<u>34</u>	<u>9</u>	<u>36</u>	<u>15</u>	<u>53</u>	<u>9</u>	<u>43</u>
P 5 <u>20</u>	<u>34</u>	<u>12</u>	<u>37</u>	<u>20</u>	<u>45</u>	<u>12</u>	<u>43</u>
P 6 <u>25</u>	<u>34</u>	<u>15</u>	<u>38</u>	<u>25</u>	<u>43</u>	<u>15</u>	<u>43</u>
P 7 <u>30</u>	<u>34</u>	<u>18</u>	<u>39</u>	<u>30</u>	<u>43</u>	<u>18</u>	<u>43</u>
P 8		<u>21</u>	<u>40</u>			<u>21</u>	<u>43</u>
P 9		<u>24</u>	<u>42</u>			<u>24</u>	<u>44</u>
P10		<u>27</u>	<u>44</u>			<u>27</u>	<u>45</u>
P11		<u>30</u>	<u>46</u>			<u>30</u>	<u>46</u>
P12							
P13							
P14							
P15							
P16							
P17							
P18							
P19							
P20							

Flushed tool



This is an actual photograph of recorder chart.

POINT	PRESSURE		
	Field Reading	Office Reading	
(A) Initial Hydrostatic Mud	2215	2216	PSI
(B) First Initial Flow Pressure	30	34	PSI
(C) First Final Flow Pressure	30	34	PSI
(D) Initial Closed-in Pressure	50	46	PSI
(E) Second Initial Flow Pressure	50	37	PSI
(F) Second Final Flow Pressure	50	43	PSI
(G) Final Closed-in Pressure	50	46	PSI
(H) Final Hydrostatic Mud	2185	2121	PSI



Home Office: Wichita, Kansas 67201

P.O. Box 1599

(316) 262-5861

Company Rains & Williamson Oil Company, Inc. Lease & Well No. #2 Frazier
 Elevation 1257 Kelly Bushing Formation Simpson Effective Pay --- Ft. Ticket No. 16170
 Date 1/ 29 /83 Sec. 18 Twp. 33S Range 3W County Sumner State Kansas
 Test Approved by Mike Engelbrecht Western Representative Norman Allen

Formation Test No. 5 Interval Tested from 4508 ft. to 4523 ft. Total Depth 4523 ft.
 Packer Depth 4508 ft. Size 6 3/4 in. Packer Depth - ft. Size - in.
 Packer Depth 4503 ft. Size 6 3/4 in. Packer Depth - ft. Size - in.
 Depth of Selective Zone Set -

Top Recorder Depth (Inside) 4516 ft. Recorder Number 3354 Cap. 4200
 Bottom Recorder Depth (Outside) 4519 ft. Recorder Number 13268 Cap. 4225
 Below Straddle Recorder Depth - ft. Recorder Number - Cap. -

Drilling Contractor Rains & Williamson Oil Drlg. Rig #2 Drill Collar Length 418 I. D. 2 1/4 in.
 Mud Type chemical Viscosity - Weight Pipe Length - I. D. - in.
 Weight 9.6 Water Loss 9.2 cc. Drill Pipe Length 4080 I. D. 3.8 in.
 Chlorides 6,000 P.P.M. Test Tool Length 20 ft. Tool Size 5 1/2 OD in.
 Jars: Make - Serial Number - Anchor Length 15 ft. Size 5 1/2 OD
 Did Well Flow? No Reversed Out No Surface Choke Size 3/4 in. Bottom Choke Size 3/4 in.
 Main Hole Size 7 7/8 in. Tool Joint Size 4 1/2 XH in.

Blow: Weak to very weak throughout test. Flushed tool once on final flow period.

Recovered 120 ft. of drilling mud

Recovered _____ ft. of _____

Recovered _____ ft. of _____

Recovered _____ ft. of _____

Recovered _____ ft. of _____

Remarks: _____

Time Set Packer(s) 9:30 ~~A.M.~~ P.M. Time Started Off Bottom 12:00 ~~A.M.~~ P.M. Maximum Temperature 128°
 Initial Hydrostatic Pressure (A) 2201 P.S.I.
 Initial Flow Period Minutes 30 (B) 51 P.S.I. to (C) 51 P.S.I.
 Initial Closed In Period Minutes 30 (D) 1462 P.S.I.
 Final Flow Period Minutes 60 (E) 68 P.S.I. to (F) 84 P.S.I.
 Final Closed In Period Minutes 30 (G) 1295 P.S.I.
 Final Hydrostatic Pressure (H) 2191 P.S.I.

WESTERN TESTING CO., INC.
Pressure Data

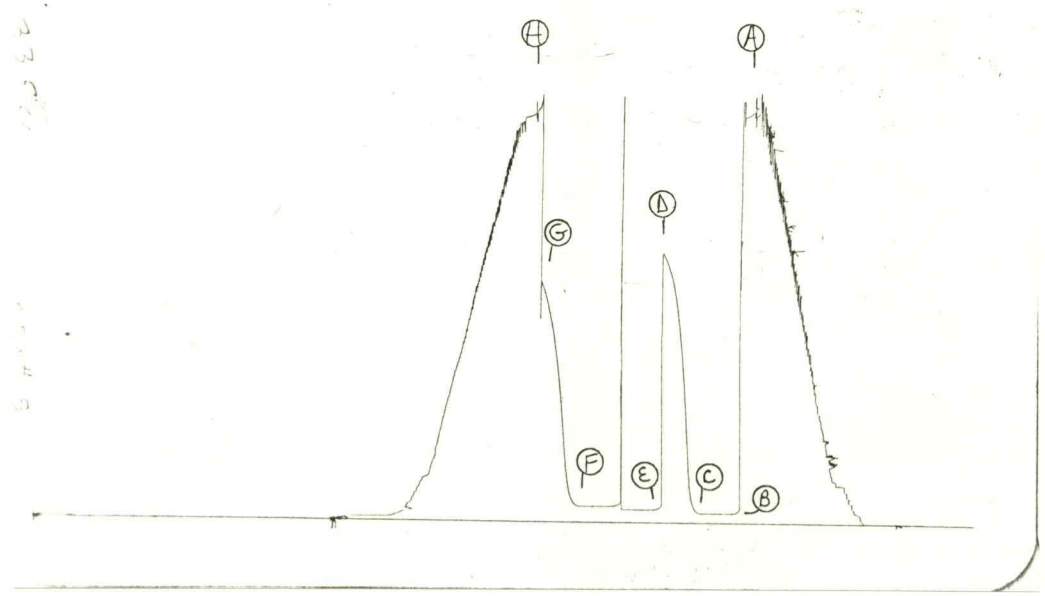
Date 1/29/83 Test Ticket No. 16170
 Recorder No. 3354 Capacity 4200 Location 4516 Ft
 Clock No. -- Elevation 1257 Kelly Bushing Well Temperature 128 °F

Point	Pressure		Time Given	Time Computed
A. Initial Hydrostatic Mud	<u>2201</u>	P.S.I.	<u>9:30P</u>	<u>M</u>
B First Initial Flow Pressure	<u>51</u>	P.S.I.	<u>30</u>	<u>Mins. 30 Mins</u>
C First Final Flow Pressure	<u>51</u>	P.S.I.	<u>30</u>	<u>Mins. 30 Mins</u>
D Initial Closed-in Pressure	<u>1462</u>	P.S.I.	<u>60</u>	<u>Mins. 60 Mins</u>
E Second Initial Flow Pressure	<u>68</u>	P.S.I.	<u>30</u>	<u>Mins. 30 Mins</u>
F Second Final Flow Pressure	<u>84</u>	P.S.I.		
G Final Closed-in Pressure	<u>1295</u>	P.S.I.		
H Final Hydrostatic Mud	<u>2191</u>	P.S.I.		

PRESSURE BREAKDOWN

First Flow Pressure		Initial Shut-In		Second Flow Pressure		Final Shut-In	
Breakdown: <u>6</u> Inc.		Breakdown: <u>10</u> Inc.		Breakdown: <u>12</u> Inc.		Breakdown: <u>10</u> Inc.	
of <u>5</u> mins. and a		of <u>3</u> mins. and a		of <u>5</u> mins. and a		of <u>3</u> mins. and a	
final inc. of <u>0</u> Min.		final inc. of <u>0</u> Min.		final inc. of <u>0</u> Min.		final inc. of <u>0</u> Min.	
Point Mins.	Press.	Point Minutes	Press.	Point Minutes	Press.	Point Minutes	Press.
P 1 <u>0</u>	<u>51</u>	<u>0</u>	<u>51</u>	<u>0</u>	<u>68</u>	<u>0</u>	<u>84</u>
P 2 <u>5</u>	<u>51</u>	<u>3</u>	<u>73</u>	<u>5</u>	<u>68</u>	<u>3</u>	<u>92</u>
P 3 <u>10</u>	<u>51</u>	<u>6</u>	<u>149</u>	<u>10</u>	<u>68</u>	<u>6</u>	<u>119</u>
P 4 <u>15</u>	<u>51</u>	<u>9</u>	<u>445</u>	<u>15</u>	<u>68</u>	<u>9</u>	<u>211</u>
P 5 <u>20</u>	<u>51</u>	<u>12</u>	<u>795</u>	<u>20</u>	<u>68</u>	<u>12</u>	<u>445</u>
P 6 <u>25</u>	<u>51</u>	<u>15</u>	<u>1038</u>	<u>25</u>	<u>69</u>	<u>15</u>	<u>717</u>
P 7 <u>30</u>	<u>51</u>	<u>18</u>	<u>1207</u>	<u>30</u>	<u>FLUSHED TOOL</u>	<u>18</u>	<u>920</u>
P 8		<u>21</u>	<u>1319</u>	<u>35</u>	<u>88</u>	<u>21</u>	<u>1059</u>
P 9		<u>24</u>	<u>1395</u>	<u>40</u>	<u>86</u>	<u>24</u>	<u>1165</u>
P10		<u>27</u>	<u>1447</u>	<u>45</u>	<u>86</u>	<u>27</u>	<u>1251</u>
P11		<u>30</u>	<u>1462</u>	<u>50</u>	<u>86</u>	<u>30</u>	<u>1295</u>
P12				<u>55</u>	<u>85</u>		
P13				<u>60</u>	<u>84</u>		
P14							
P15							
P16							
P17							
P18							
P19							
P20							

TKT # 16170
I



This is an actual photograph of recorder chart.

POINT	PRESSURE		PSI
	Field Reading	Office Reading	
(A) Initial Hydrostatic Mud	2225	2201	PSI
(B) First Initial Flow Pressure	50	51	PSI
(C) First Final Flow Pressure	50	51	PSI
(D) Initial Closed-in Pressure	1465	1462	PSI
(E) Second Initial Flow Pressure	70	68	PSI
(F) Second Final Flow Pressure	95	84	PSI
(G) Final Closed-in Pressure	1310	1295	PSI
(H) Final Hydrostatic Mud	2225	2191	PSI