

TRILOBITE
TESTING, INC.

DRILL STEM TEST REPORT

Prepared For: **MTM Petroleum, Inc.**

PO Box 82
Spivey KS 67142

ATTN: Jerry Smith

4-33s-8w

Lone Tree Farms #1

Start Date: 2006.03.24 @ 00:56:31

End Date: 2006.03.24 @ 09:11:46

Job Ticket #: 24385 DST #: 1

Trilobite Testing, Inc

PO Box 362 Hays, KS 67601

ph: 785-625-4778 fax: 785-625-5620

MTM Petroleum, Inc.

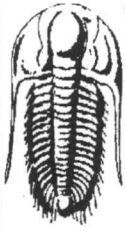
Lone Tree Farms #1

4-33s-8w

DST # 1

Miss.

2006.03.24



**TRILOBITE
TESTING, INC**

DRILL STEM TEST REPORT

MTM Petroleum, Inc.

PO Box 82
Spivey KS 67142

ATTN: Jerry Smith

Lone Tree Farms #1

4-33s-8w

Job Ticket: 24385

DST#: 1

Test Start: 2006.03.24 @ 00:56:31

GENERAL INFORMATION:

Formation: **Miss.**

Deviated: No Whipstock: ft (KB)

Time Tool Opened: 03:45:31

Time Test Ended: 09:11:46

Test Type: Conventional Bottom Hole

Tester: Davy Cline

Unit No: 36

Interval: **4507.00 ft (KB) To 4537.00 ft (KB) (TVD)**

Reference Elevations: 1445.00 ft (KB)

Total Depth: 4507.00 ft (KB) (TVD)

1433.00 ft (CF)

Hole Diameter: 7.88 inches Hole Condition: Fair

KB to GR/CF: 12.00 ft

Serial #: 6799

Inside

Press@RunDepth: 257.24 psig @ 4508.00 ft (KB)

Capacity: 7000.00 psig

Start Date: 2006.03.24

End Date: 2006.03.24

Last Calib.: 2006.03.24

Start Time: 00:56:36

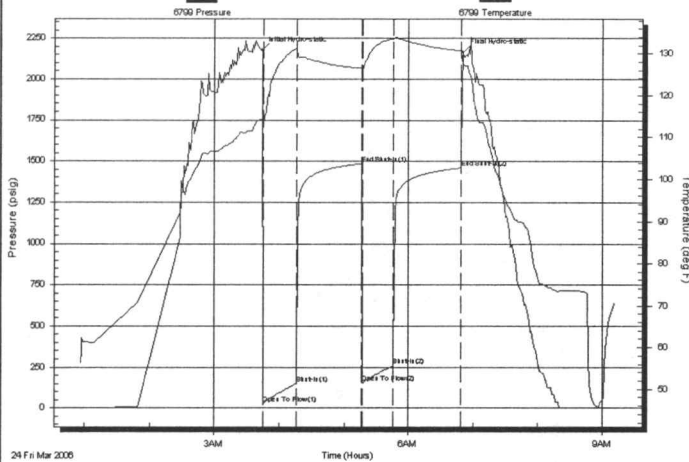
End Time: 09:11:45

Time On Btm: 2006.03.24 @ 03:43:31

Time Off Btm: 2006.03.24 @ 06:50:16

TEST COMMENT: IF: Fair blow . Slow increasing blow to BOB in 13 min.
IS: Bled off. No blow back.
FF: Fair blow . Slow increasing blow to BOB in 17 min.
FSI: Bled off. No blow back.

Pressure vs. Time



PRESSURE SUMMARY

Time (Min.)	Pressure (psig)	Temp (deg F)	Annotation
0	2175.18	114.15	Initial Hydro-static
2	26.27	113.21	Open To Flow (1)
32	149.32	131.20	Shut-In(1)
93	1485.29	126.58	End Shut-In(1)
93	152.55	126.30	Open To Flow (2)
123	257.24	133.61	Shut-In(2)
186	1458.99	130.66	End Shut-In(2)
187	2164.00	127.46	Final Hydro-static

Recovery

Length (ft)	Description	Volume (bbl)
120.00	MCW 68%w 32%m	1.23
370.00	SI MCW 96%w 4%m	3.80

Gas Rates

	Choke (inches)	Pressure (psig)	Gas Rate (Mcf/d)



**TRILOBITE
TESTING, INC.**

DRILL STEM TEST REPORT

TOOL DIAGRAM

MTM Petroleum, Inc.

Lone Tree Farms #1

PO Box 82
Spivey KS 67142

4-33s-8w

Job Ticket: 24385

DST#: 1

ATTN: Jerry Smith

Test Start: 2006.03.24 @ 00:56:31

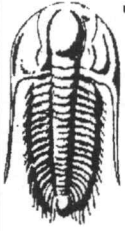
Tool Information

Drill Pipe:	Length: 4508.00 ft	Diameter: 3.25 inches	Volume: 46.26 bbl	Tool Weight: 2100.00 lb
Heavy Wt. Pipe:	Length: 0.00 ft	Diameter: 0.00 inches	Volume: 0.00 bbl	Weight set on Packer: 20000.00 lb
Drill Collar:	Length: 0.00 ft	Diameter: 0.00 inches	Volume: 0.00 bbl	Weight to Pull Loose: 80000.00 lb
			<u>Total Volume: 46.26 bbl</u>	Tool Chased 0.00 ft
Drill Pipe Above KB:	24.00 ft			String Weight: Initial 57000.00 lb
Depth to Top Packer:	4507.00 ft			Final 58000.00 lb
Depth to Bottom Packer:	ft			
Interval between Packers:	30.00 ft			
Tool Length:	53.00 ft			
Number of Packers:	2	Diameter: 6.75 inches		
Tool Comments:				

Tool Description

Tool Description	Length (ft)	Serial No.	Position	Depth (ft)	Accum. Lengths
Change Over Sub	1.00			4485.00	
Shut In Tool	5.00			4490.00	
Hydraulic tool	5.00			4495.00	
Safety Joint	2.00			4497.00	
Packer	5.00			4502.00	23.00 Bottom Of Top Packer
Packer	5.00			4507.00	
Stubb	1.00			4508.00	
Recorder	0.00	6799	Inside	4508.00	
Perforations	26.00			4534.00	
Recorder	0.00	13400	Outside	4534.00	
Bullnose	3.00			4537.00	30.00 Bottom Packers & Anchor

Total Tool Length: 53.00



**TRILOBITE
TESTING, INC**

DRILL STEM TEST REPORT

FLUID SUMMARY

MTM Petroleum, Inc.

Lone Tree Farms #1

PO Box 82
Spivey KS 67142

4-33s-8w

Job Ticket: 24385

DST#: 1

ATTN: Jerry Smith

Test Start: 2006.03.24 @ 00:56:31

Mud and Cushion Information

Mud Type: Gel Chem

Cushion Type:

Oil API:

deg API

Mud Weight: 9.00 lb/gal

Cushion Length:

ft

Water Salinity: 84000 ppm

Viscosity: 44.00 sec/qt

Cushion Volume:

bbbl

Water Loss: 11.98 in³

Gas Cushion Type:

Resistivity: ohm.m

Gas Cushion Pressure:

psig

Salinity: 6000.00 ppm

Filter Cake: inches

Recovery Information

Recovery Table

Length ft	Description	Volume bbl
120.00	MCW 68%w 32%m	1.231
370.00	SI MCW 96%w 4%m	3.796

Total Length: 490.00 ft Total Volume: 5.027 bbl

Num Fluid Samples: 0

Num Gas Bombs: 0

Serial #:

Laboratory Name:

Laboratory Location:

Recovery Comments: water recovery .18 ohms @ 50 deg.

Serial #: 6799

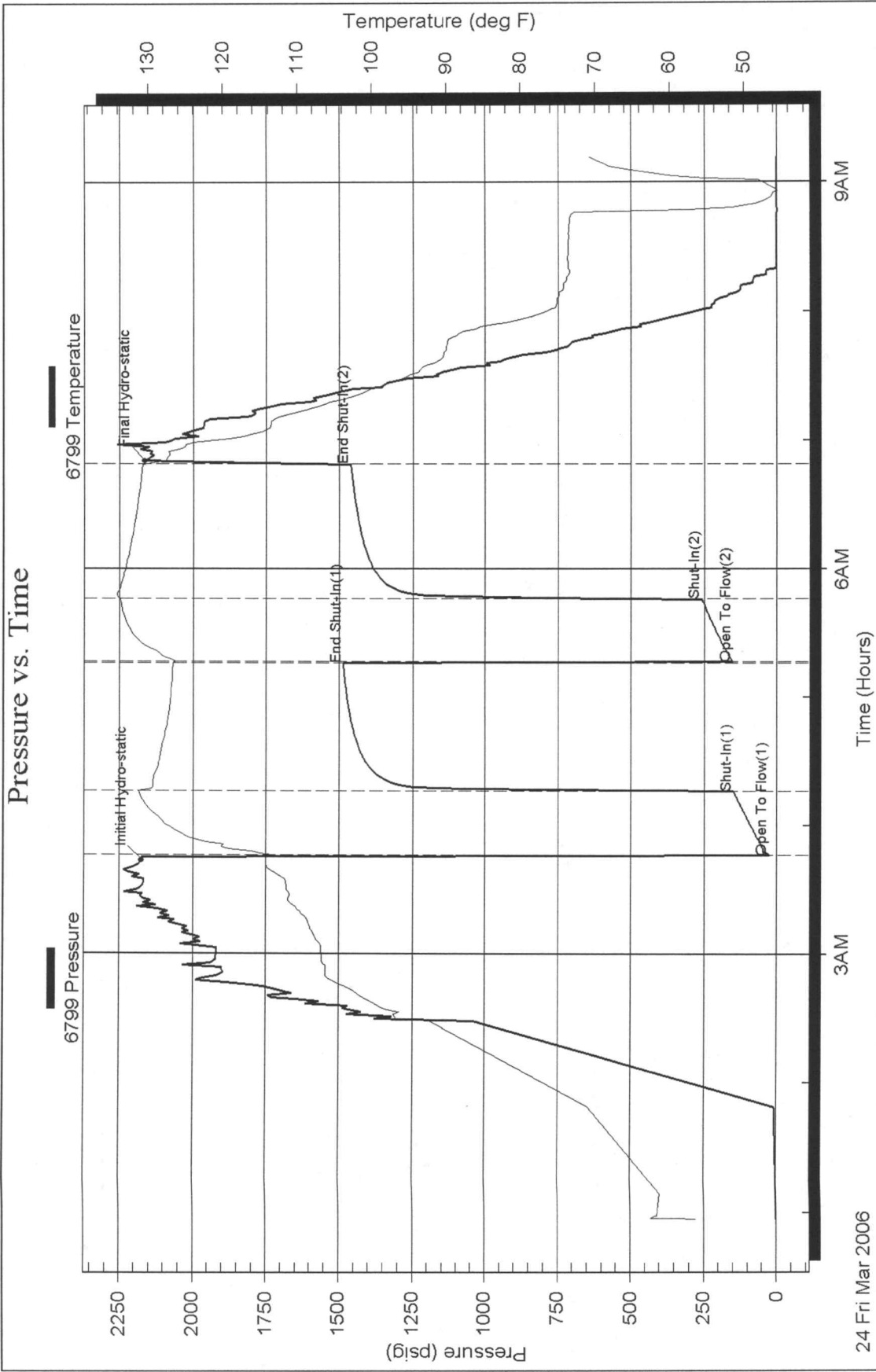
Inside

MTM Petroleum, Inc.

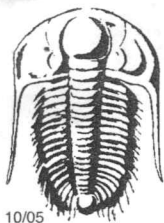
4-33s-8w

DST Test Number: 1

Pressure vs. Time



24 Fri Mar 2006



TRILOBITE TESTING INC.

P.O. Box 362 • Hays, Kansas 67601

8571

No 24385

Test Ticket

Well Name & No. Lone Tree Farms #1 Test No. 1 Date 3-24-06
 Company MTM Petroleum, Inc. Zone Tested Miss.
 Address P.O. Box 82 Spivey, KS 67142 Elevation 1445 KB 1433 GL
 Co. Rep / Geo. Jerry Smith Rig Duke Drly Rig 5
 Location: Sec. 4 Twp. 33s Rge. 8w Co. Harper State KS
 Comment: _____ Release date / time: _____

Interval Tested 4507 Initial Str Wt./Lbs. 57,000 Unseated Str Wt./Lbs. 80,000
 Anchor Length 4537 Wt. Set Lbs. 20,000 Wt. Pulled Loose/Lbs. 58,000
 Top Packer Depth 4502 Tool Weight 2100
 Bottom Packer Depth 4507 Hole Size 7 7/8" ✓ Rubber Size 6 3/4" ✓
 Total Depth 4537 Wt. Pipe Run _____ Drill Collar Run 0
 Mud Wt. 9.3 LCM 0 Vis. 44 WL 12.0 Drill Pipe Size 4 1/2" XH Ft. Run 4508

Blow Description FF: Fair blow. Slow increasing blow to BOB in 13 min.
ISI: Bled off. No blow back.
FF: Fair blow. Slow increasing blow to BOB in 17 min.
FSI: Bled off. No blow back.

Recovery - Total Feet 490 GIP no Ft. in DC 0 Ft. in DP 490
 Rec. 120 Feet of MCW %gas _____ %oil 68 %water 32 %mud _____
 Rec. 370 Feet of SI MCW %gas _____ %oil 96 %water 4 %mud _____
 Rec. _____ Feet of _____ %gas _____ %oil _____ %water _____ %mud _____
 Rec. _____ Feet of _____ %gas _____ %oil _____ %water _____ %mud _____
 Rec. _____ Feet of _____ %gas _____ %oil _____ %water _____ %mud _____
 BHT 131 °F Gravity _____ °API D @ _____ °F Corrected Gravity _____ °API
 RW .18 @ 50 °F Chlorides 84,000 ppm Recovery _____ Chlorides 6000 ppm System

	AK-1	Alpine	Recorder No.	Test
(A) Initial Hydrostatic Mud		<u>2175</u> PSI	<u>6799</u>	✓ <u>1100</u>
(B) First Initial Flow Pressure		<u>26</u> PSI	(depth) <u>4508</u>	Jars _____
(C) First Final Flow Pressure		<u>149</u> PSI	Recorder No. <u>13400</u>	Safety Jt. ✓ <u>75</u>
(D) Initial Shut-In Pressure		<u>1485</u> PSI	(depth) <u>4534</u>	Circ Sub ✓ <u>NC</u>
(E) Second Initial Flow Pressure		<u>153</u> PSI	Recorder No. _____	Sampler _____
(F) Second Final Flow Pressure		<u>257</u> PSI	(depth) _____	Straddle _____
(G) Final Shut-In Pressure		<u>1459</u> PSI	Initial Opening <u>30</u>	Ext. Packer _____
(Q) Final Hydrostatic Mud		<u>2164</u> PSI	Initial Shut-In <u>60</u>	Shale Packer _____
			Final Flow <u>30</u>	Ruined Packer _____
			Final Shut-In <u>60</u>	Mileage ✓ <u>120</u> <u>150</u>
			T-On Location <u>00:00</u>	Sub Total: <u>1325</u>
			T-Started <u>00:56</u>	Std. By _____
			T-Open <u>03:45</u>	Acc. Chg: _____
			T-Pulled <u>06:45</u>	Other: _____
			T-Out <u>09:11</u>	Total: _____

TRILOBITES TESTING INC. SHALL NOT BE LIABLE FOR DAMAGED OF ANY KIND OF THE PROPERTY OR PERSONNEL OF THE ONE FOR WHOM A TEST IS MADE, OR FOR ANY LOSS SUFFERED OR SUSTAINED, DIRECTLY OR INDIRECTLY, THROUGH THE USE OF ITS EQUIPMENT, OR ITS STATEMENTS OR OPINION CONCERNING THE RESULTS OF ANY TEST. TOOLS LOST OR DAMAGED IN THE HOLE SHALL BE PAID FOR AT COST BY THE PARTY FOR WHOM THE TEST IS MADE.

Approved By [Signature]
 Our Representative Danny [Signature]

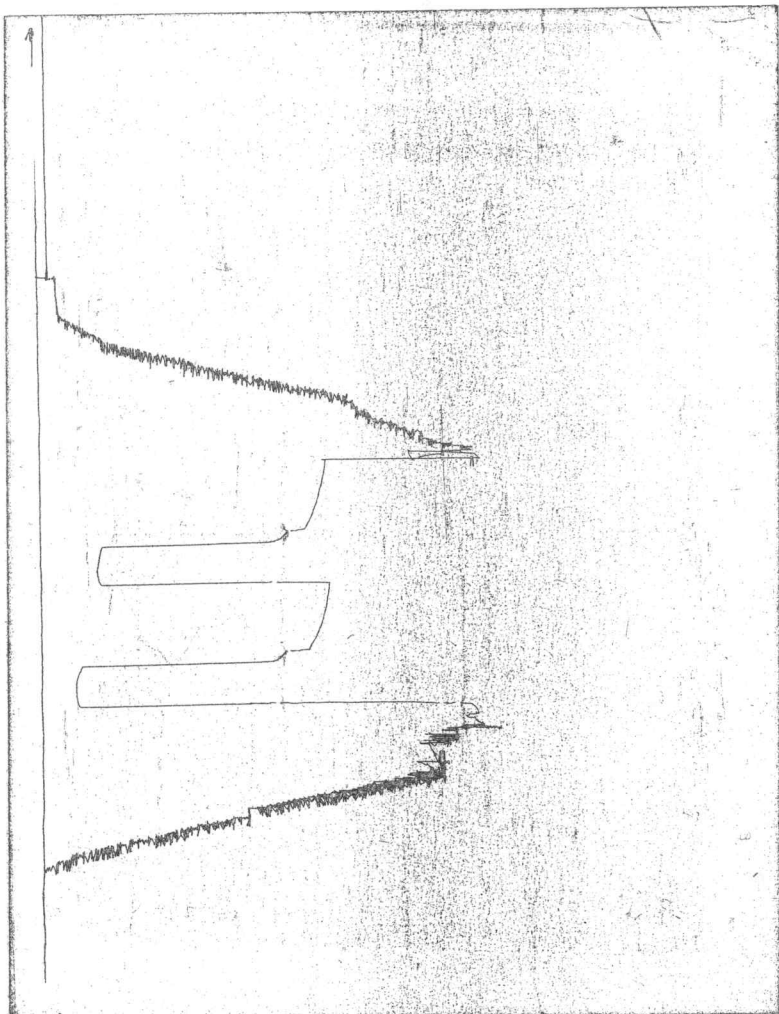


CHART PAGE
This is a photocopy of the actual AK-1 recorder chart.