

AS

MAY 10 1981

WELL COMPLETION REPORT AND DRILLER'S LOG

S. 1 T. 34-S R. 13 NE  
Loc. C NE NE  
660' FSL & 660' FEL  
County Barber

API No. 15 - 007 - 21,179  
County Number

Operator  
Petroleum Technical Services Company

Address  
3000 North Garfield Street, Suite 210, Midland, Texas 79701

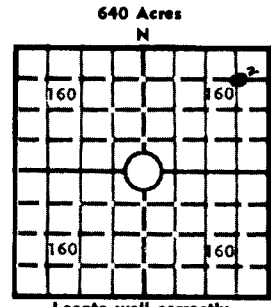
Well No. 2 Lease Name R. H. Donovan

Footage Location  
660 feet from (N) line 660' feet from (E) line

Principal Contractor Eagle Drilling, Inc. Geologist Ed Sander

Spud Date 5-15-81 Date Completed 5-25-81 Total Depth 5,107' P.B.T.D. Open hole

Directional Deviation None Oil and/or Gas Purchaser None



Locate well correctly  
Elev.: Gr. 1,523'  
DF 1,533' KB 1,536'

CASING RECORD

Report of all strings set— surface, intermediate, production, etc.

Purpose of string	Size hole drilled	Size casing set (in O.D.)	Weight lbs/ft.	Setting depth	Type cement	Sacks	Type and percent additives
Surface	12-1/4"	8-5/8"	24#/ft.	555'	Class "A"	400	2% CaCl <sub>2</sub> , + 1/4# flocele/sx.

LINER RECORD

PERFORATION RECORD

Top, ft.	Bottom, ft.	Sacks cement	Shots per ft.	Size & type	Depth interval
			None		

TUBING RECORD

Size	Setting depth	Packer set at
None		

ACID, FRACTURE, SHOT, CEMENT SQUEEZE RECORD

Amount and kind of material used	Depth interval treated
None	

INITIAL PRODUCTION

Date of first production		Producing method (flowing, pumping, gas lift, etc.)			
RATE OF PRODUCTION PER 24 HOURS	Oil bbls.	Gas MCF	Water bbls.	Gas-oil ratio	CFPB
Disposition of gas (vented, used on lease or sold)			Producing interval(s)		

INSTRUCTIONS: As provided in KCC Rule 82-2-125, within 90 days after completion of a well, one completed copy of this Drillers Log shall be transmitted to the State Geological Survey of Kansas, 4150 Monroe Street, Wichita, Kansas 67209. Copies of this form are available from the Conservation Division, State Corporation Commission, 245 No. Water, Wichita, Kansas 67202. Phone AC 316-522-2206. If confidential custody is desired, please note Rule 82-2-125. Drillers Logs will be on open file in the Oil and Gas Division, State Geological Survey of Kansas, Lawrence, Kansas 66044.

Operator  
 Petroleum Technical Services Company

DESIGNATE TYPE OF COMP.: OIL, GAS,  
 DRY HOLE, SWDW, ETC.:  
 Dry hole.

Well No. 2 Lease Name R. H. Donovan

S 1 T 34-S R 13<sup>XX</sup> E W

**WELL LOG**

Show all important zones of porosity and contents thereof; cored intervals, and all drill-stem tests, including depth interval tested, cushion used, time tool open, flowing and shut-in pressures, and recoveries.

SHOW GEOLOGICAL MARKERS, LOGS RUN, OR OTHER DESCRIPTIVE INFORMATION.

FORMATION DESCRIPTION, CONTENTS, ETC.	TOP	BOTTOM	NAME	DEPTH
Red Bed	0'	585'	Lansing	3,939'
Red Bed & Shale	585'	1,085'	Miss.	4,594'
Shale and Shells	1,085'	1,750'	Kinderhook	4,773'
Shale & Lime	1,750'	3,245'	Woodford	4,835'
Lime	3,245'	3,475'	Simpson	
Shale & Lime	3,475'	3,940'	Sand	4,992'
Lime	3,940'	4,147'	Ran GR/CNL & Dual Induction logs.	
Lime & Shale	4,147'	4,330'		
Shale & Lime	4,330'	4,490'		
Lime & Shale	4,490'	4,645'		
Lime	4,645'	4,925'		
Viola & Simpson	4,925'	5,074'		
Lime	5,074'	5,098'		

USE ADDITIONAL SHEETS, IF NECESSARY, TO COMPLETE WELL RECORD.

Date Received

*Don E. Bennett*

Signature

Owner/Operator

Title

6-19-81

Date

6-30-1981