



Pressure Breakdown Data

Date 5-11-64

Field Report No. 07286 A

Recorder No. T-909 Capacity 5000#

Recorder Depth 6337'

Recorder Run INSIDE Clock Travel 0.02128 inches per min.

Well Temperature 148 °F.

Point	Pressure	Time Given		Time Computed	
A Initial Hydrostatic Mud	3021				
B Initial Shut-in	361				
C Initial Flow	32				
D Final Flow	21				
E Final Shut-in	1646				
F Final Hydrostatic Mud	3013				
		Opened Tool	2325		
		Initial Flow	5	Mins.	5 Mins.
		Initial Shut-in	30	Mins.	29 Mins.
		Final Flow	45	Mins.	45 Mins.
		Final Shut-in	90	Mins.	91 Mins.

C-1 29
C-2 20

Remarks: _____

PRESSURE INCREMENTS

INITIAL SHUT-IN			FINAL SHUT-IN					
Breakdown: _____ increments of _____ mins. and a final increment of _____ mins.			Breakdown: <u>9</u> increments of <u>3</u> mins. and a final increment of <u>2</u> mins.			Breakdown: <u>18</u> increments of <u>5</u> mins. and a final increment of <u>1</u> mins.		
Point Minutes	Pressure	$\frac{T + \Delta t}{\Delta t}$	Point Minutes	Pressure	$\frac{T + \Delta t}{\Delta t}$	Point Minutes	Pressure	$\frac{T + \Delta t}{\Delta t}$
			C-1 0	29		D 0	21	
			3	47		5	192	
			6	71		10	362	
			9	95		15	513	
			12	120		20	659	
			15	151		25	788	
			18	185		30	901	
			21	227		35	1010	
			24	273		40	1102	
			27	320		45	1187	
			B 29	361		50	1263	
						55	1333	
						60	1391	
						65	1447	
						70	1547	
						75	1538	
						80	1577	
						85	1613	
						90	1636	
						E 91	1646	



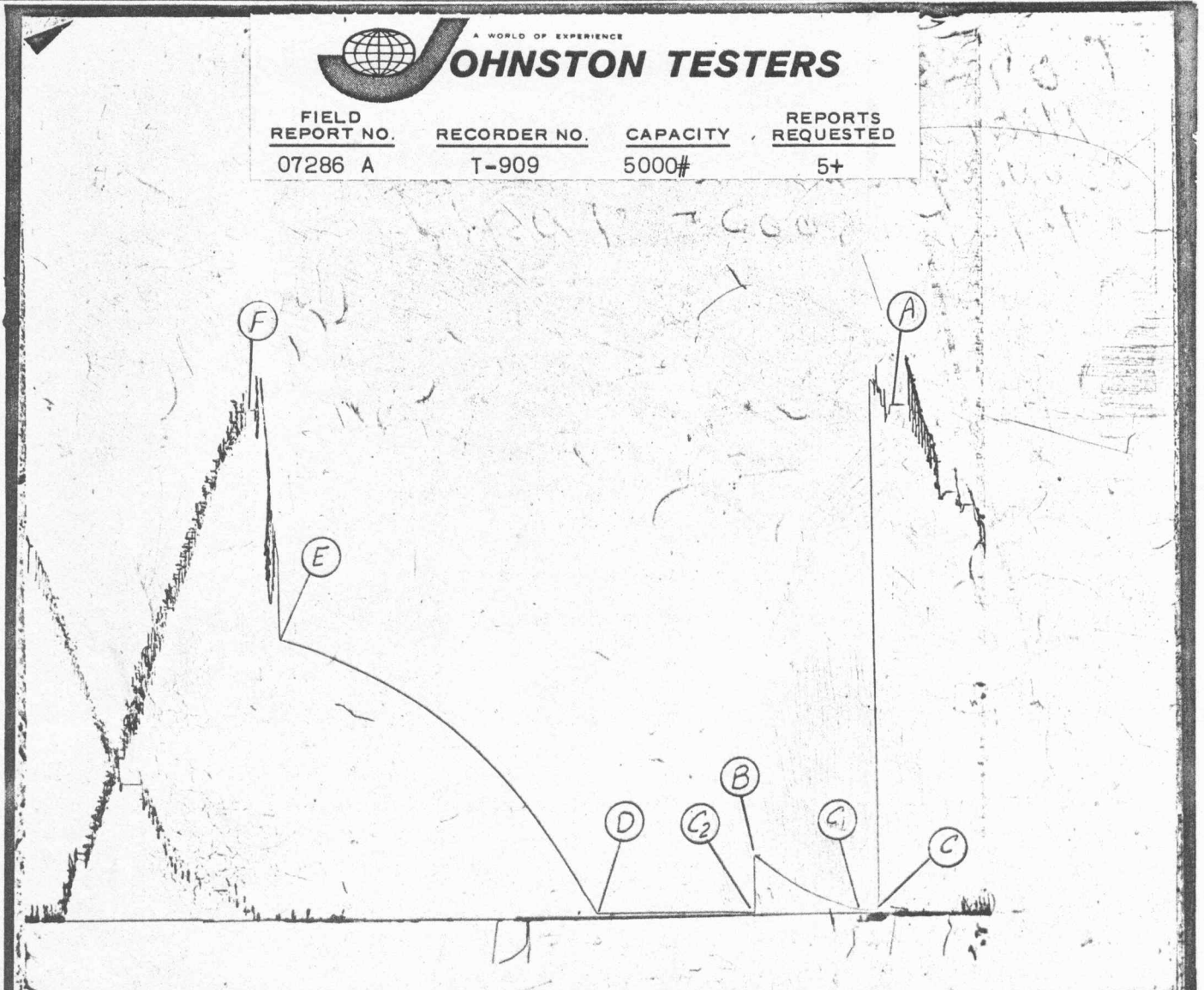
JOHNSTON TESTERS

Pressure Data

Field Report No. 07286 A

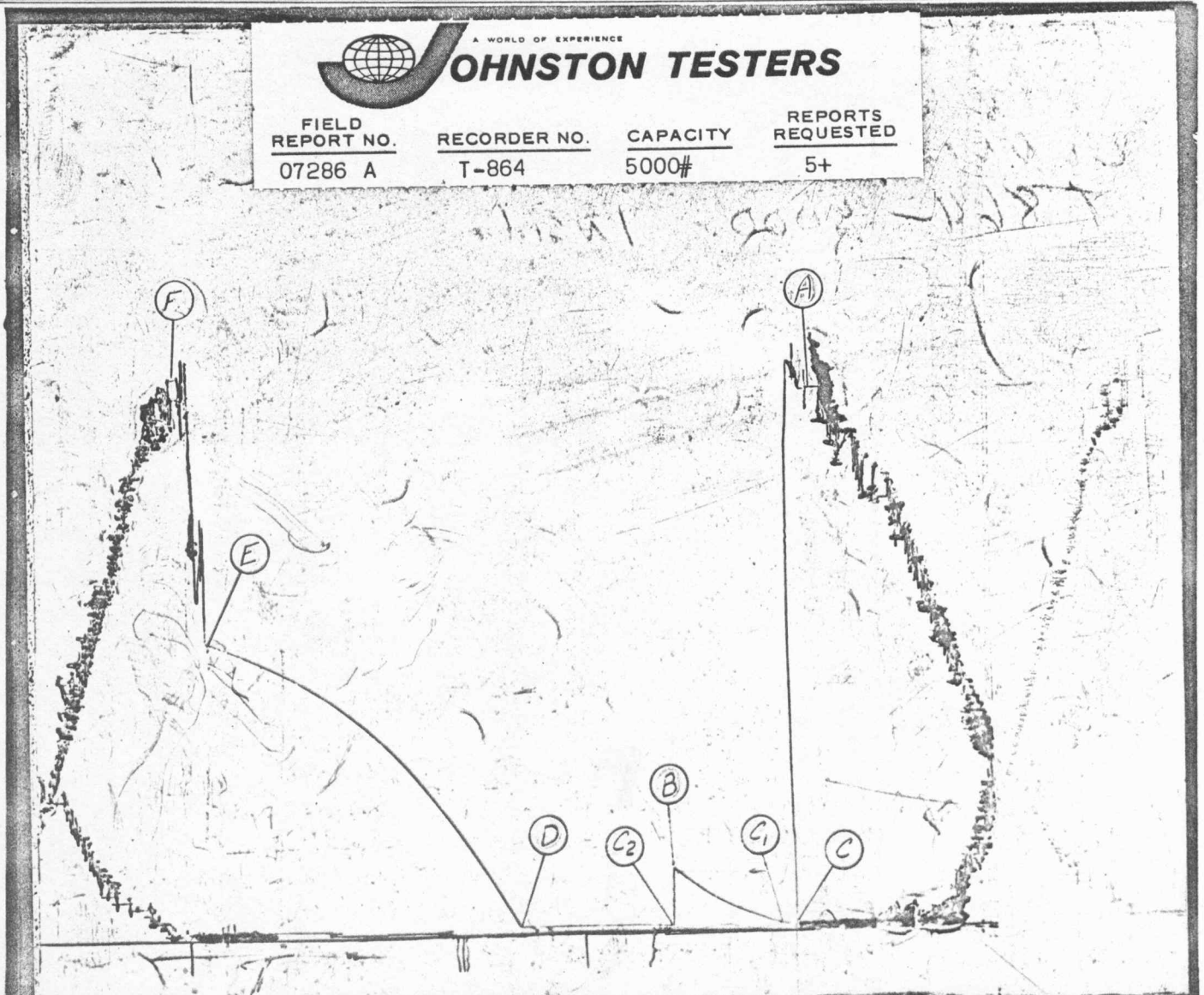
Recorder No.	T-909	INSIDE		
Capacity (P.S.I.G.)	5000			
Recorder Depth	6337'			
Pressure Gradient P.S.I./Ft.				
Well Temperature °F.	148			
A Initial Hydrostatic Mud	3021			
B Initial Shut-in	* 361			
C Initial Flow	32			
D Final Flow	21			
E Final Shut-in	* 1646			
F Final Hydrostatic Mud	3013			
Remarks:	C-1	29		
	C-2	20		

*Shut in pressure did not reach static reservoir pressure.



Recorder No.	T-864	INSIDE		
Capacity (P.S.I.G.)	5000			
Recorder Depth	6332'			
Pressure Gradient P.S.I./Ft.				
Well Temperature °F.	146			
A Initial Hydrostatic Mud	3055			
B Initial Shut-in	* 393			
C Initial Flow	73			
D Final Flow	81			
E Final Shut-in	* 1683			
F Final Hydrostatic Mud	3044			
Remarks: C-1	76			
C-2	71			

*Shut in pressure did not reach static reservoir pressure.



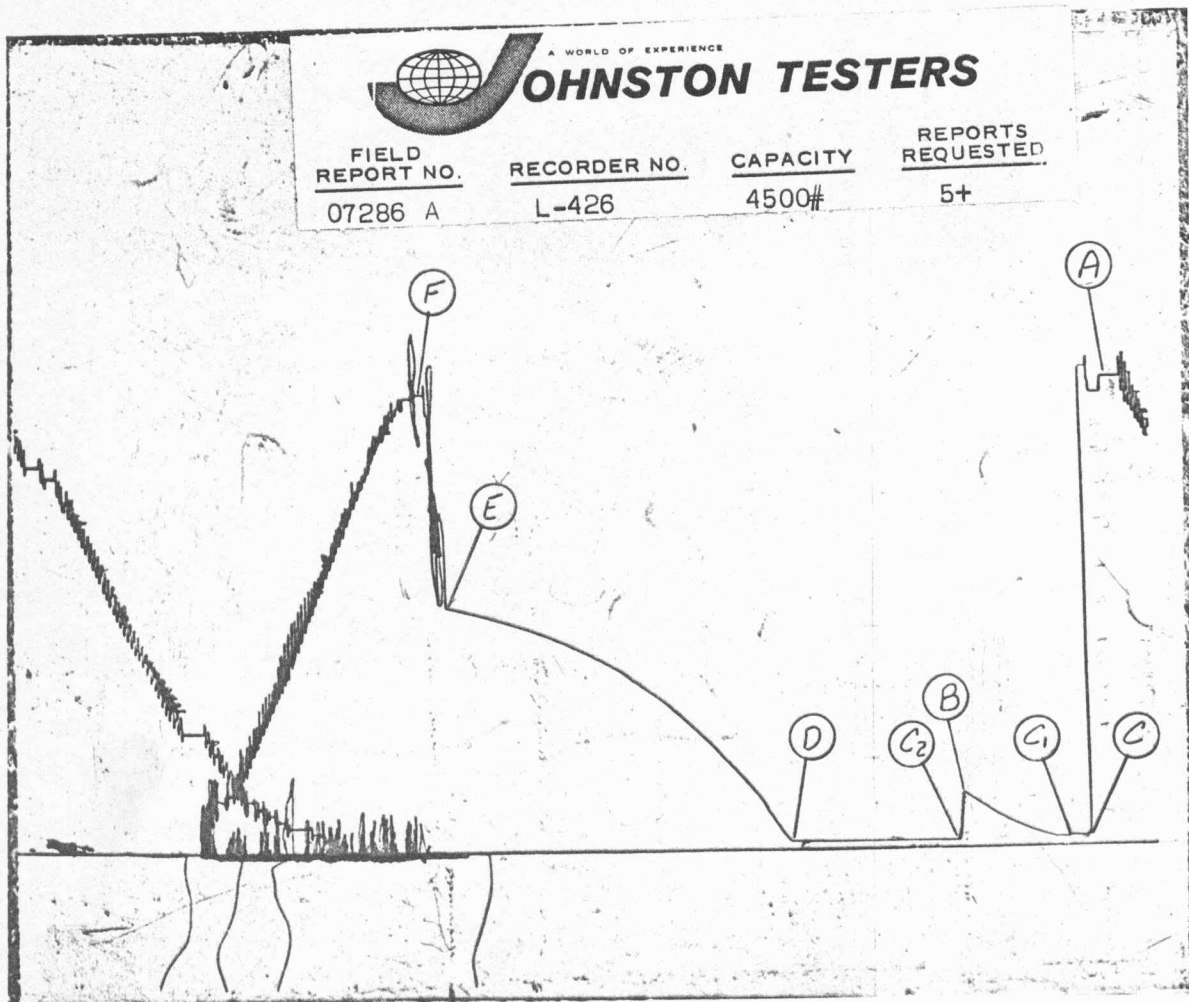
JOHNSTON TESTERS

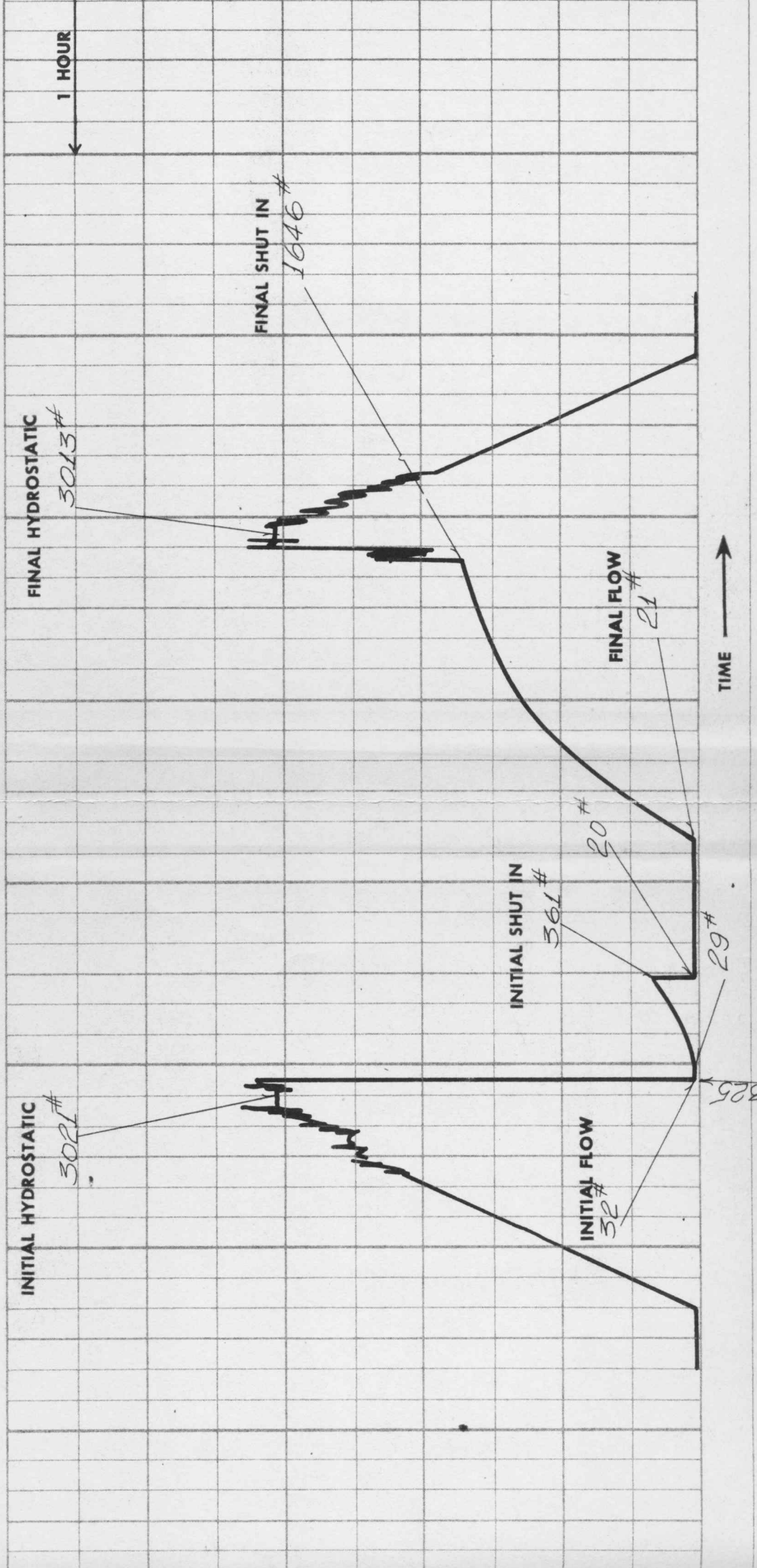
Pressure Data

Field Report No. 07286 A

Recorder No.	L-426	OUTSIDE	
Capacity (P.S.I.G.)	4500		
Recorder Depth	6347'		
Pressure Gradient P.S.I./Ft.			
Well Temperature °F.	148		
A Initial Hydrostatic Mud	3232		
B Initial Shut-in	* 399		
C Initial Flow	102		
D Final Flow	76		
E Final Shut-in	* 1683		
F Final Hydrostatic Mud	3149		
Remarks:	C-1	102	
	C-2	76	

*Shut in pressure did not reach static reservoir pressure.





JOHNSTON TESTERS

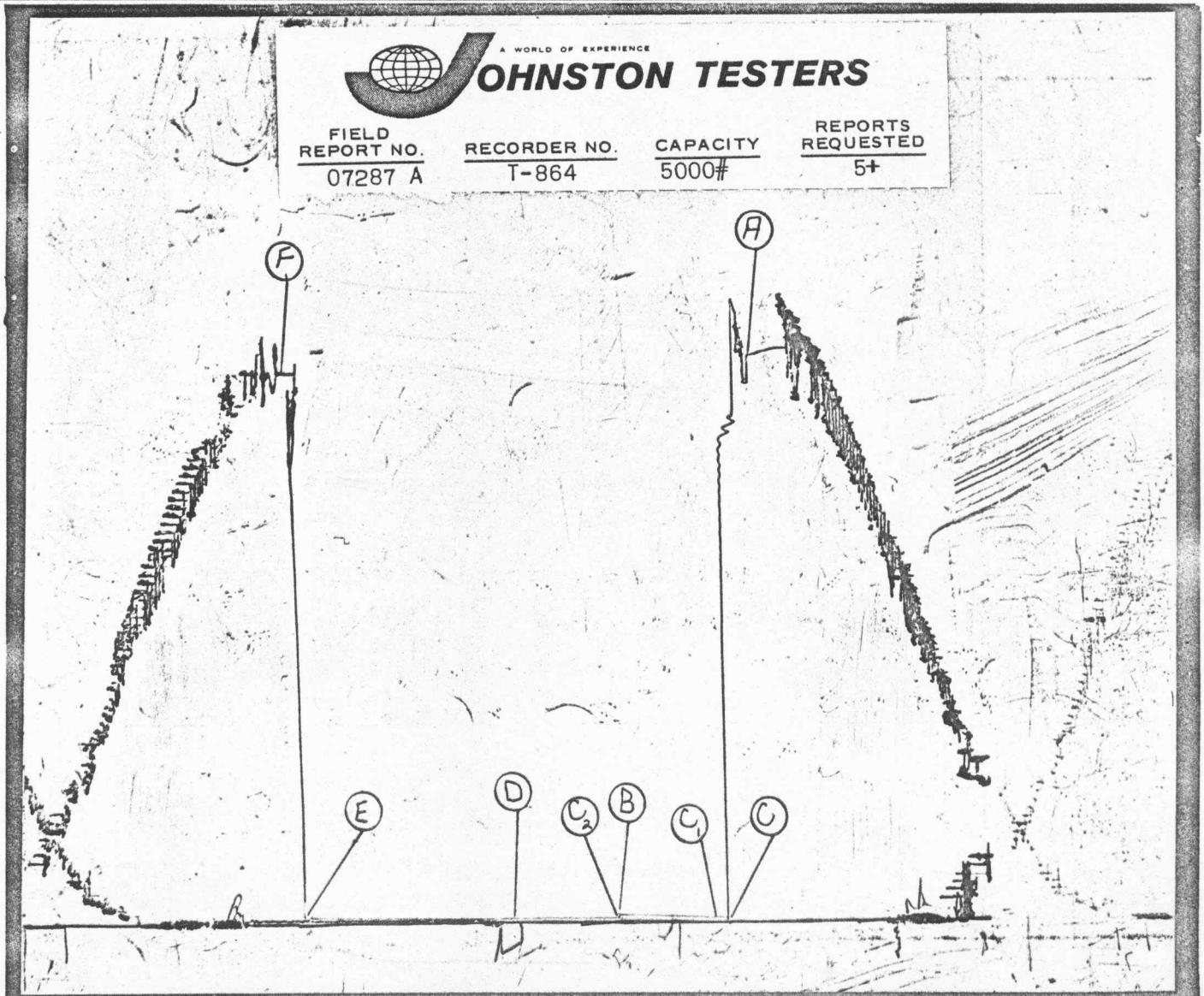
Pressure Data

Field Report No. 07287 A

Recorder No.	T-864	INSIDE		
Capacity (P.S.I.G.)	5000			
Recorder Depth	6540'			
Pressure Gradient P.S.I./Ft.				
Well Temperature °F.	138			
A Initial Hydrostatic Mud	3051			
B Initial Shut-in	* 87			
C Initial Flow	66			
D Final Flow	71			
E Final Shut-in	* 77			
F Final Hydrostatic Mud	3052			
Remarks:	C-1	66		
	C-2	69		

NOT BROKEN DOWN IN INCREMENTS OF TIME DUE TO INSUFFICIENT BUILD-UP OF PRESSURE.

*Shut in pressure did not reach static reservoir pressure.





JOHNSTON TESTERS

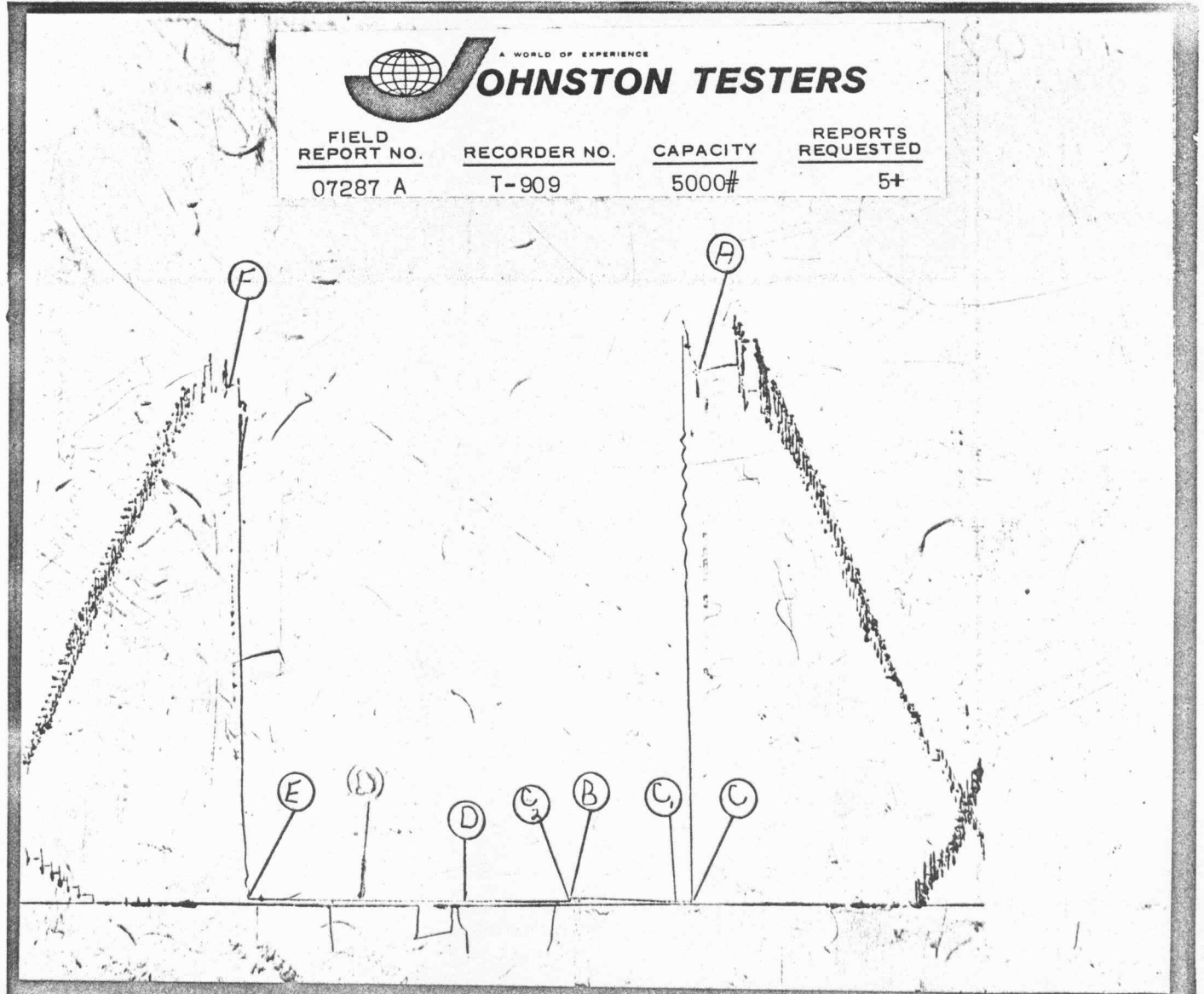
Pressure Data

Field Report No. 07287 A

Recorder No.	T-909	INSIDE		
Capacity (P.S.I.G.)	5000			
Recorder Depth	6546'			
Pressure Gradient P.S.I./Ft.				
Well Temperature °F.	138			
A Initial Hydrostatic Mud	3137			
B Initial Shut-in	* 41			
C Initial Flow	24			
D Final Flow	22			
E Final Shut-in	* 34			
F Final Hydrostatic Mud	3055			
Remarks:	C-1 24			
	C-2 23			

NOT BROKEN DOWN IN INCREMENTS OF TIME DUE TO INSUFFICIENT BUILD-UP OF PRESSURE.

*Shut in pressure did not reach static reservoir pressure.





Pressure Data

Field Report No. 07287 A

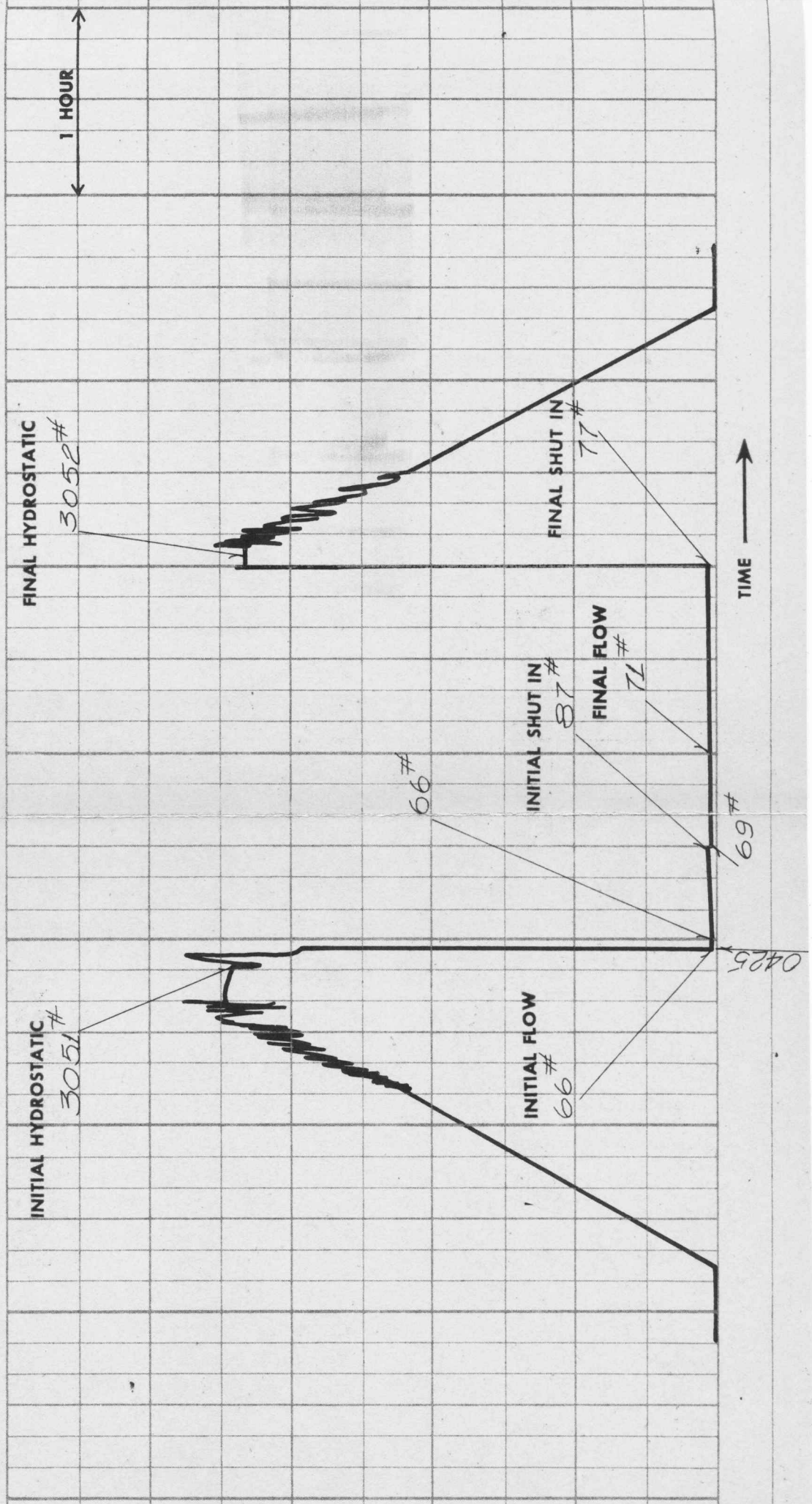
Recorder No.	L-426	OUTSIDE			
Capacity (P.S.I.G.)	4500				
Recorder Depth	6553'				
Pressure Gradient P.S.I./Ft.					
Well Temperature °F.	138				
A Initial Hydrostatic Mud	-				
B Initial Shut-in	-				
C Initial Flow	-				
D Final Flow	-				
E Final Shut-in	-				
F Final Hydrostatic Mud	-				

Remarks: **CLOCK STOPPED, NO PRESSURES RECORDED.**

*Shut in pressure did not reach static reservoir pressure.



FIELD REPORT NO. 07287 A RECORDER NO. L-426 CAPACITY 4500# REPORTS REQUESTED 5±





Pressure Breakdown Data

Date 5-14-64

Field Report No. 07288 A

Recorder No. T-909 Capacity 5000#

Recorder Depth 6626'

Recorder Run INSIDE Clock Travel 0.02133 inches per min.

Well Temperature 146 °F

Point	Pressure	Time Given		Time Computed	
A Initial Hydrostatic Mud	3147	Opened Tool	0540		
B Initial Shut-in	142	Initial Flow	5	Mins.	6
C Initial Flow	24	Initial Shut-in	30	Mins.	29
D Final Flow	16	Final Flow	45	Mins.	45
E Final Shut-in	579	Final Shut-in	90	Mins.	90
F Final Hydrostatic Mud	3107				

C-1 22
C-2 14

Remarks: _____

PRESSURE INCREMENTS

Breakdown: _____ increments of _____ mins. and a final increment of _____ mins.			INITIAL SHUT-IN Breakdown: <u>9</u> increments of <u>3</u> mins. and a final increment of <u>2</u> mins.			FINAL SHUT-IN Breakdown: <u>18</u> increments of <u>5</u> mins. and a final increment of <u>-</u> mins.		
Point Minutes	Pressure	$\frac{T + \Delta t}{\Delta t}$	Point Minutes	Pressure	$\frac{T + \Delta t}{\Delta t}$	Point Minutes	Pressure	$\frac{T + \Delta t}{\Delta t}$
			C-1 0	22		D 0	16	
				3			5	44
				6			10	71
				9			15	100
				12			20	128
				15			25	158
				18			30	190
				21	104		35	221
				24	119		40	253
				27	133		45	286
			B 29	142			50	316
							55	351
							60	382
							65	414
							70	447
							75	478
							80	509
							85	545
						E 90	579	



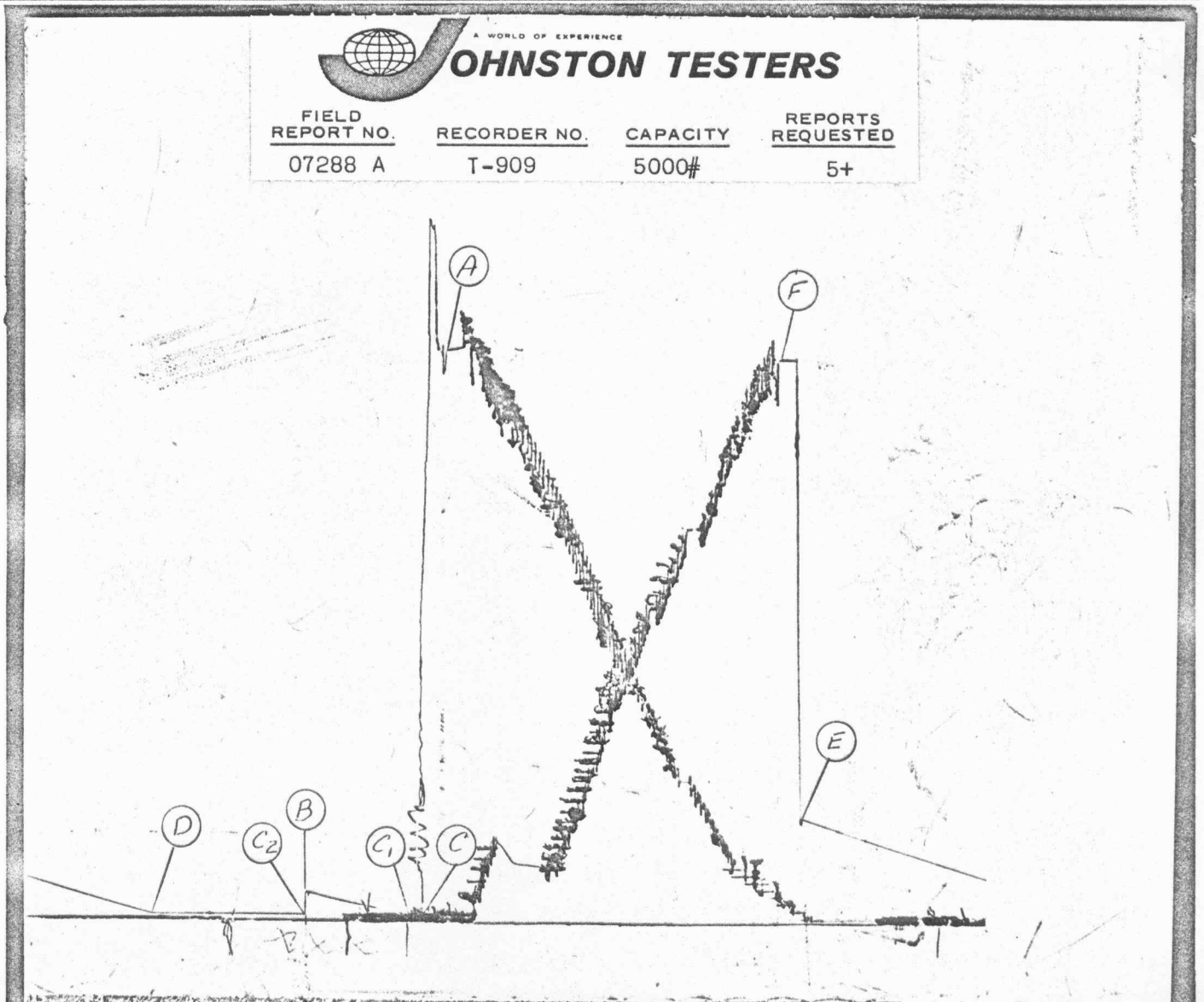
JOHNSTON TESTERS

Pressure Data

Field Report No. 07288 A

Recorder No.	T-909	INSIDE		
Capacity (P.S.I.G.)	5000			
Recorder Depth	6626'			
Pressure Gradient P.S.I./Ft.				
Well Temperature °F.	146			
A Initial Hydrostatic Mud	3147			
B Initial Shut-in	* 142			
C Initial Flow	24			
D Final Flow	16			
E Final Shut-in	* 579			
F Final Hydrostatic Mud	3107			
Remarks:	C-1 22			
	C-2 14			

*Shut in pressure did not reach static reservoir pressure.



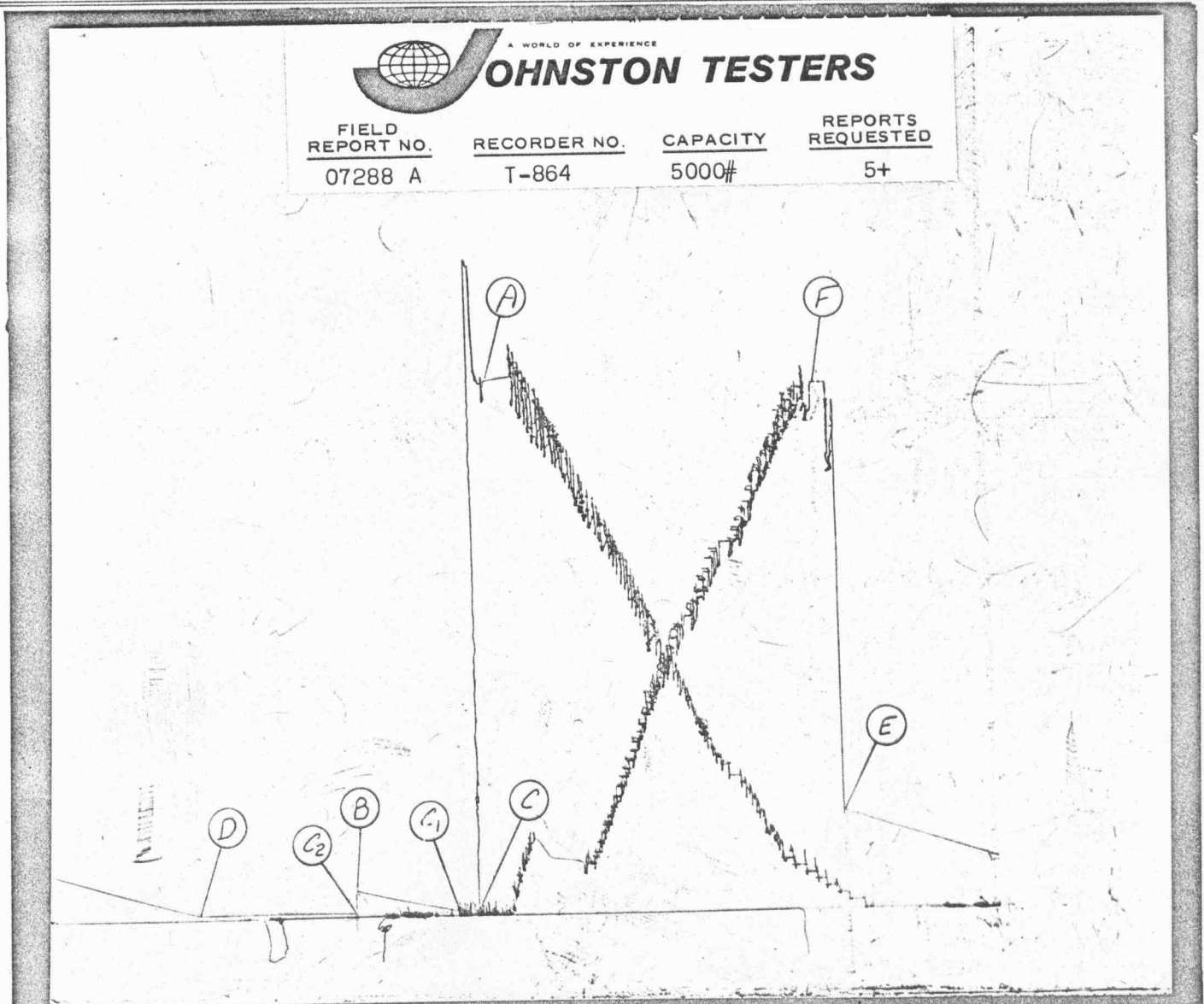

A WORLD OF EXPERIENCE

JOHNSTON TESTERS

FIELD REPORT NO.	RECORDER NO.	CAPACITY	REPORTS REQUESTED
07288 A	T-909	5000#	5+

Recorder No.	T-864	INSIDE		
Capacity (P.S.I.G.)	5000			
Recorder Depth	6620'			
Pressure Gradient P.S.I./Ft.				
Well Temperature °F.	145			
A Initial Hydrostatic Mud	3160			
B Initial Shut-in	* 193			
C Initial Flow	69			
D Final Flow	71			
E Final Shut-in	* 599			
F Final Hydrostatic Mud	3113			
Remarks:	C-1	69		
	C-2	67		

*Shut in pressure did not reach static reservoir pressure.





Pressure Data

Field Report No. 07288 A

Recorder No.	L-426	OUTSIDE		
Capacity (P.S.I.G.)	4500			
Recorder Depth	6634'			
Pressure Gradient P.S.I./Ft.				
Well Temperature °F.	146			
A Initial Hydrostatic Mud	3414			
B Initial Shut-in	* 176			
C Initial Flow	80			
D Final Flow	43			
E Final Shut-in	* 598			
F Final Hydrostatic Mud	3166			
Remarks:	C-1	67		
	C-2	55		

*Shut in pressure did not reach static reservoir pressure.

