

Kansas Cores

PETROLEUM RESERVOIR ENGINEERING
WICHITA, KANSAS 67208

WELL Lemon #7 COUNTY Comanche STATE Kansas
 COMPANY K.R.H. Petroleum Corp. DATE 5-18-79 FILE NO. S-1388
 FIELD _____ TYPE CORES Diamond ANALYST IS

ANALYSIS DATA AND INTERPRETATIONS

SAMPLE NO.	DEPTH	PERMEABILITY MILLIDARCYS		POROSITY %	SATURATION WATER % PORE SPACE	SATURATION OIL % PORE SPACE	PROBABLE PRODUCTION	REMARKS
		HORIZONTAL	VERTICAL					
1	4793 94	1.0	0.0	7.6	34.1	1.7	No Perm	
2	4794 95	X 0.0	0.0	10.8	57.9	2.4	No Perm	
3	4795 96	X 0.0	0.0	22.4	33.9	1.0	No Perm	
4	4796 97	X 0.0	0.0	23.9	25.5	2.2	No Perm	
5	4797 98	1.0	0.0	21.7	31.0	1.6	No Perm	
		—	—	—	—	—		
Net	2'	1.0	0.0	14.8	32.1	1.7		

Kansas Cores

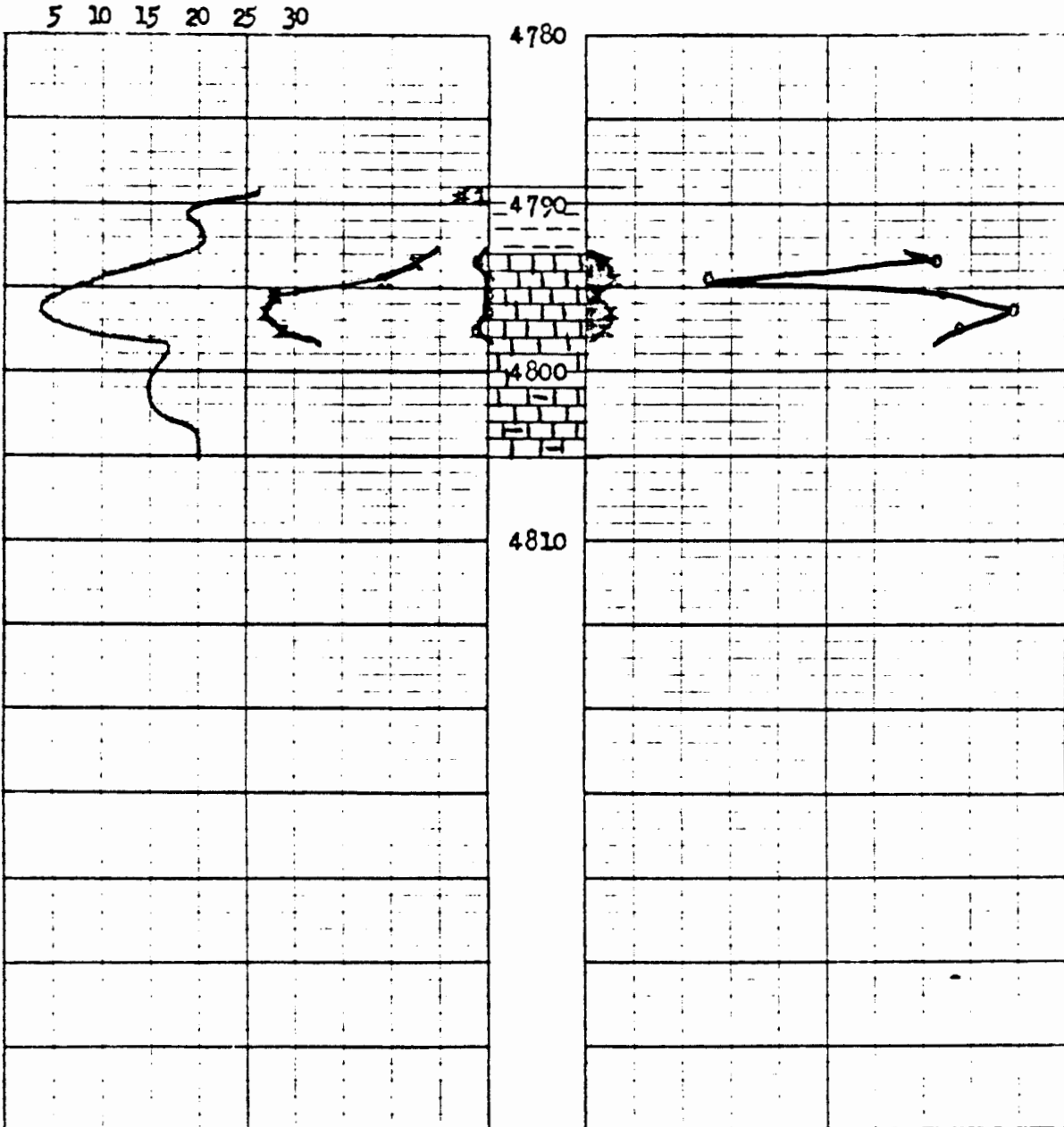
PETROLEUM RESERVOIR ENGINEERING
WICHITA, KANSAS

COMPANY K.R.M. Petroleum Corp. DATE 5-18-79
 WELL Lemon #7 ANALYST IS
 FIELD _____ ELEVATION _____
 COUNTY Comanche STATE Kansas GR _____ KB _____

The analyses and interpretations are based on material brought to Kansas Cores by the client, and such data and interpretations are accessible only to that company which the client represents. Kansas Cores makes no warranty and makes no guarantee for the interpretations and opinions of the data. Our opinions of an analysis are placed at the discretion of the operator.

PERMEABILITY MILLIDARCY'S \bigcirc — \bigcirc CONNATE WATER % SATURATION
 30 20 10 0 0 60 50 40 30
 POROSITY—% X—X OIL % PORE SATURATION X—X
CORING TIME 20 10 0 0 10 20

MIN/FT



APPENDIX V

EXHIBIT V-2

Lemon Ranch Core Data
Summary - Standard Analyses

<u>Well</u>	<u>Cored Interval</u>	<u>Net^{1/} Feet</u>	<u>Permeability - Md.</u>		<u>Porosity %</u>	<u>Saturations - %</u>	
			<u>Horizontal</u>	<u>Vertical</u>		<u>Water</u>	<u>Oil</u>
✓Lemon #2X	4764-67	0	0	0	6.9	36.7	11.0
✓Lemon #5	4784-88	3	48.9	20.6	25.5	14.8	8.2
✓Lemon #6	4781-92	8	76.6	63.0	21.2	26.2	9.9
✓Lemon #7	4793-98	2	1.0	0	14.8	32.1	1.7
✓Lemon #8	4776-84	4	3.8	1.2	9.9	27.8	8.2
✓Lemon #9	4774-78	1	1.0	0.8	16.9	18.5	9.2
✓Lemon #10	4770-75	4	7.5	6.7	22.5	20.8	7.6
Lemon #11	4760-67	6	35.3	11.6	10.4	21.7	10.9
✓Rhodes #1	4766-70	2	13.4	7.2	15.1	18.8	11.4
✓Rhodes #2	4755-65	9	84.7	49.6	19.1	22.9	8.7
Rhodes #3	4770-81	6	17.0	6.0	16.4	25.3	12.9
Average							
10 Wells ^{2/}	--	4.5	42.5	25.9	17.4	23.5	8.9

Notes

1/ Net feet - Greater than 1.0 millidarcy.

2/ Lemon #2X not included in average.