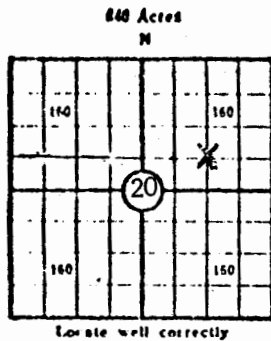


(Mail to Kansas Geological Survey, 4150 Monroe Street, Wichita, Kansas 67209)



Locate well correctly

Lease Name: Stevesson "A" Well No. 2
 Well Located: C S/2 NE/4
SEC 20 TWP 34S RGE 33W
 Operator: Cities Service Oil Company
 Address: 3545 NW 58th St., Oklahoma City, Okla. 73112
 Elevation: Ground 2849 D.F. 2857 K.B. 2858
 Type Well: (Oil, gas, dry hole) Gas

Drilling Commenced: 3-18 1975 Drilling Completed: 4-7 1975
 Well Completed: 6-11 1975 Total Depth 6642
 Initial Production: CAOF 50,000 MCFPD

Casing Record

Size: 8-5/8 Set at 1590' Size: Set at
 Size: 5-1/2 Set at 6500' Size: Set at

Liner Record

Size: Set from To

Cementing

Casing Size	Sacks	Type Cement and Additives
<u>8-5/8</u>	<u>900</u>	<u>700 sx HowcoLite w/2% CaCl, 200sx Class H w/3% CaCL</u>
* <u>5-1/2</u>	<u>350</u>	<u>250 sx 50/50 pozmix, 2% total gel 18% salt 1/4# floccel & .8 of 1% CFR-2 followed w/100 sx of 50/50 pozmix, 2% gel., 18% salt, 1/4# floccel & .8 of 1% CFR-2</u>

Perforations

Formation	Perforated Interval and Number Shots
<u>Morrow</u>	<u>6076-80' 10 Jets</u>
<u>Morrow</u>	<u>6054-63' 18 Jets</u>
<u>Morrow</u>	<u>6044-50' 12 Jets</u>

Electric Log Run. (Show type log and depths covered)

Schlumberger Dual Induction Laterlog & Comp. Formation Density w/Gr. Caliper Log fr/6641 to 1592' - Cement Bond w/CG Log fr/1590' to 1800', 3000' to 4504' & 5380-6460.

* Top of cmt. on 1st stage @ 5579', 2nd stage @ 4162'

WEE-128-05

Formation, Testing and Completion Record

Show Drill Stem Tests,
Well Stimulation and
Production Tests

Formation Top Bottom

20-34-30w

Formation	Top	Bottom
Sand & Clay	0	370
Red Bed	370	1050
Glorieta Sand	1050	1210
Red Bed	1210	1564
Andydrite	1564	1590
Shale	1590	2245
Lime & Shale	2245	3168
Dolomite	3168	3710
Dolomite Chalk	3710	3895
Lime & Shale	3895	6040
Lime & Sand	6040	6060
Lime & Shale	6060	6180
Lime	6180	6270
Lime & Shale	6270	6610
Lime	6618	6642
TD		6640
PBTD		6180

Logging:

Schlumberger Dual Induction Laterlog & Comp. Formation
Density W/GR Caliper Log from 6,641 to 1,592
Ran DP to btm. cond. hole

