

KANSAS



21-34-37W

WELL COMPLETION REPORT AND
DRILLER'S LOG

State Geological Survey

S. 21 T. 34S R. 37 W

Loc. 1980' FNL & 2540' FEL

County Stevens

API No. 15 — 189 — 20,531 WICHITA BRANCH
County Number

Operator
Hoffmann Oil Company

Address
Box 1869 Liberal, Kansas 67901

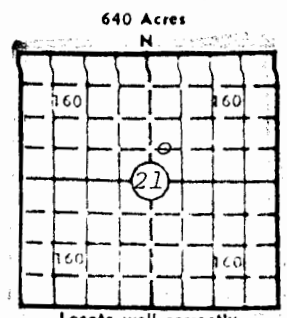
Well No. 2-21 Lease Name Hoffmann

Footage Location
1980 feet from (N) MSX line 2540 feet from (E) DMF line

Principal Contractor Weber Drilling & Exploration Geologist Joe Blair

Spud Date 5-16-81 Date Completed drilling 6-1-80 Total Depth 6848' P.B.T.D. 3154'

Directional Deviation N/A Oil and/or Gas Purchaser



Elev.: Gr. 3147

DF 3153 KB 3155

CASING RECORD

Report of all strings set — surface, intermediate, production, etc.

Purpose of string	Size hole drilled	Size casing set (in O.D.)	Weight lbs/ft.	Setting depth	Type cement	Sacks	Type and percent additives
surface	12 1/4"	8 5/8"	24#	1521'	35/65 pozmix, class H	650 6%gel, 150	2%cc, 1/4#flocele
production	7 7/8"	4 1/2"	10.5#	3192'	35/65 pozmix RFC (Thixotropic)	450 5#kolite, 100	6%gel, 1/4#flakes

LINER RECORD

PERFORATION RECORD

Top, ft.	Bottom, ft.	Sacks cement	Shots per ft.	Size & type	Depth interval
			2	.38 DML	3037-3042
TUBING RECORD			1	.38 DML	3050-3052
			2	.38 DML	3060-3070
Size <u>2 3/8"</u>	Setting depth <u>3100'</u>	Packer set at <u>-</u>	1	.38 DML	3070-3086

ACID, FRACTURE, SHOT, CEMENT SQUEEZE RECORD

Amount and kind of material used	Depth interval treated
2500 gallons of Modzoz acid	3037-3086
80,000 gallons of WG-20 + 110,000# of river sand	3037-3086

INITIAL PRODUCTION

Date of first production shut in - waiting on pipeline connection & gas sales contract Producing method (flowing, pumping, gas lift, etc.) pumping

RATE OF PRODUCTION PER 24 HOURS	Oil	Gas	Water	Gas-oil ratio
	-	200 bbls.	50 MCF	-

Disposition of gas (vented, used on lease or sold) to be sold Producing interval (s) 3037-3086' COUNCIL GROVE

INSTRUCTIONS: As provided in KCC Rule 82-2-125, within 90 days after completion of a well, one completed copy of this Drillers Log shall be transmitted to the State Geological Survey of Kansas, 4150 Monroe Street, Wichita, Kansas 67209. Copies of this form are available from the Conservation Division, State Corporation Commission, 245 No. Water, Wichita, Kansas 67202. Phone AC 316-522-2206. If confidential custody is desired, please note Rule 82-2-125. Drillers Logs will be on open file in the Oil and Gas Division, State Geological Survey of Kansas, Lawrence, Kansas 66044.

Operator <i>HOFFMANN OIL COMPANY</i>		DESIGNATE TYPE OF COMP.: OIL, GAS, DRY HOLE, SWDW, ETC.: <i>GAS WELL</i>
Well No. <i>2-21</i>	Lease Name <i>Hoffmann</i>	
S <i>21</i> T <i>34S</i> R <i>37</i> ^{<i>R</i>} / _{<i>W</i>}		

WELL LOG

Show all important zones of porosity and contents thereof; cored intervals, and all drill-stem tests, including depth interval tested, cushion used, time tool open, flowing and shut-in pressures, and recoveries.

SHOW GEOLOGICAL MARKERS, LOGS RUN, OR OTHER DESCRIPTIVE INFORMATION.

FORMATION DESCRIPTION, CONTENTS, ETC.	TOP	BOTTOM	NAME	DEPTH
			<i>Morrow</i>	<i>-2880</i>
			<i>L. Morrow Sand</i>	<i>-3288</i>
			<i>Mississippi</i>	
			<i>Chester</i>	<i>-3333</i>
			<i>Ste. Gen</i>	<i>-3457</i>
			<i>Ste. Louis</i>	<i>-3555</i>

USE ADDITIONAL SHEETS, IF NECESSARY, TO COMPLETE WELL RECORD.

Date Received	<i>Ned E. Lowery</i> Signature
	<i>Agent/Hoffmann Oil Company</i> Title
	<i>July 15, 1981</i> Date

51-34-3500