

32-34-41W

KANSAS DRILLERS LOG

State Geological Survey
WICHITA, BRANCH

S. 32 T. 34S R. 41 W

Loc. 660' FNL 70' FEL

County Morton

API No. 15 — 129 — 20295
County Number

Operator
Cities Service Oil Company

Address
3545 N. W. 58th Street, Oklahoma City, Oklahoma 73112

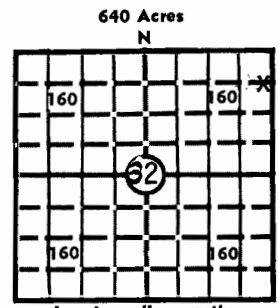
Well No. 901 Lease Name Wilburton Morrow C Sand Unit

Footage Location
660 feet from (N) ~~JSX~~ line 70 feet from (E) (X) line

Principal Contractor Geologist
Wakefield Drlg. Co.

Spud Date Total Depth P.B.T.D.
12-5-76 5000 4958

Date Completed Oil Purchaser
1-6-77 Jayhawk Pipeline Co.



Locate well correctly
Elev.: Gr. 3446
DF 3453 KB 3454

CASING RECORD

Report of all strings set — surface, intermediate, production, etc.

Purpose of string	Size hole drilled	Size casing set (in O.D.)	Weight lbs/ft.	Setting depth	Type cement	Sacks	Type and percent additives
Surface	12 3/4	8-5/8	24	1437	Common	700	600 sx Pozmix w/2% gel, 2% CaCl & 1/4# Flocele; 100 sx 60/40 Pozmix w/3% CaCl & 1/4# Flocele.
Production	7-7/8	5 1/2	14	4999	Common	225	18% salt, 2% CaCl, 1/4# Flocele & .8 of 1% CFR-2.

LINER RECORD

PERFORATION RECORD

Top, ft.	Bottom, ft.	Sacks cement	Shots per ft.	Size & type	Depth interval
			3	.57 Jet	4876-4884
TUBING RECORD			2	.57 Jet	4888-4894
Size	Setting depth	Packer set at			
2-7/8	4860	4860			

ACID, FRACTURE, SHOT, CEMENT SQUEEZE RECORD

Amount and kind of material used	Depth interval treated
None	

INITIAL PRODUCTION

Date of first production 1-5-77	Producing method (flowing, pumping, gas lift, etc.) Flowing				
RATE OF PRODUCTION PER 24 HOURS	Oil 259 bbls.	Gas 1840 MCF	Water 5BLW bbls.	Gas-oil ratio 7104	CFPB
Disposition of gas (vented, used on lease or sold) To be sold			Producing interval (s) 4876-84 & 4888-94		

INSTRUCTIONS: As provided in KCC Rule 82-2-125, within 90 days after completion of a well, one completed copy of this Drillers Log shall be transmitted to the State Geological Survey of Kansas, 4150 Monroe Street, Wichita, Kansas 67209. Copies of this form are available from the Conservation Division, State Corporation Commission, 3830 So. Meridian (P.O. Box 17027), Wichita, Kansas 66217. Phone AC 316-522-2206. If confidential custody is desired, please note Rule 82-2-125. Drillers Logs will be on open file in the Oil and Gas Division, State Geological Survey of Kansas, Lawrence, Kansas 66044.

Operator

Cities Service Oil Company

DESIGNATE TYPE OF COMP.: OIL, GAS,
DRY HOLE, SWDW, ETC.:

Oil

Well No.

901

Lease Name

Wilburton Morrow C Sand Unit

S 32 T 34 R 41 ^{XK}
W

WELL LOG

Show all important zones of porosity and contents thereof; cored intervals, and all drill-stem tests, including depth interval tested, cushion used, time tool open, flowing and shut-in pressures, and recoveries.

SHOW GEOLOGICAL MARKERS, LOGS RUN,
OR OTHER DESCRIPTIVE INFORMATION.

FORMATION DESCRIPTION, CONTENTS, ETC.	TOP	BOTTOM	NAME	DEPTH
Red Bed - Shale	0	400	Logging: Schlumberger Dual Induction Laterlog, Compensated Neutron Formation Density Gamma & Proximity Micro Log to 5002. EMP log to 4997. Go International Gamma Ray Neutron Cement Bond & Collar Correlation Logs to 4958.	
Gyp & Red Bed	400	830		
Red Bed & Gyp	830	1025		
Red Bed, Gyp, Anhydrite	1025	1439		
Anhydrite & Shale	1439	1670		
Shale	1670	2245		
Lime & Shale	2245	2592		
Shale & Lime	2592	2750		
Lime & Shale	2750	3040		
Shale & Lime	3040	3190		
Lime & Shale	3190	3446		
Shale & Lime	3446	3532		
lime & Shale	3532	3723		
Shale & Lime	3723	3834		
Lime & Shale	3834	4019		
Shale & Lime	4019	4135		
Lime & Shale	4135	4297		
Shale	4297	4399		
Lime, Shale, Sand	4399	4489		
Lime & Shale	4489	4576		
Shale & Lime	4576	4703		
Shale & Sand	4703	4957		
Shale	4957	5000		
Total Depth		5000		
PBTD		4958		

USE ADDITIONAL SHEETS, IF NECESSARY, TO COMPLETE WELL RECORD.

Date Received

H. E. Massey

H. E. Massey

Signature

Operations Manager

Title

January 11, 1977

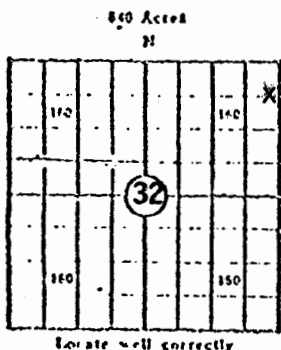
Date

KANSAS CORPORATION COMMISSION

32-34-41W

WELL RECORD

(Mail to Kansas Geological Survey, 4150 Monroe Street, Wichita, Kansas 67209)



Lease Name: Wilburton Morrow C Sand Unit Well No. 901
 Well Located: 660' FNL 70' FEL
 SEC 32 TWP 34S RGE 41W
 Operator: Cities Service Oil Company
 Address: 3545 N. W. 58th St., Oklahoma City, OK 73112
 Elevation: Ground 3446 D.F. 3453 K.B. 3454
 Type Well: (Oil, gas, dry hole) Oil

Drilling Commenced: 12-5 1976 Drilling Completed: 12-16 1976
 Well Completed: 1-6 1977 Total Depth 5000
 Initial Production: IPF 259 BOPD & 1840 MCFPD

Casing Record

Size: 8-5/8 Set at 1437 Size: Set at
 Size: 5-1/2 Set at 4999 Size: Set at

Liner Record

Size: Set from To

Cementing

Casing Size	Sacks	Type Cement and Additives
<u>8-5/8</u>	<u>700</u>	<u>600 sx Pozmix w/2% gel, 2% CaCl & 1/4# Flocele; 100 sx 60/40 Pozmix w/3% CaCl & 1/4# Flocele.</u>
<u>5-1/2</u>	<u>225</u>	<u>18% salt, 2% CaCl, 1/4# Flocele & .8 of 1% CFR-2.</u>

Cement Bond Log indicates top of cement at 3593.

Perforations

Formation	Perforated Interval and Number Shots
<u>Morrow C</u>	<u>4876-4884 w/24 shots</u>
<u>Morrow C</u>	<u>4888-4894 w/12 shots</u>
<u> </u>	<u> </u>
<u> </u>	<u> </u>

Electric Log Run (Show type log and depths covered)

Schlumberger Dual Induction Laterlog, Compensated Neutron Formation Density Gamma & Proximity Micro Log to 5002. EMP log to 4997.
Go International Gamma Ray Neutron Cement Bond & Collar Correlation Logs to 4958.

(Fill in formation and related information on reverse side)

32-34-41W

32-34-41w

FORMATION, TESTING AND COMPLETION RECORD

Show Drill Stem Tests,
Well Stimulation and
Production Tests

Formation	Top	Bottom	
Red Bed - Shale	0	400	No Drill Stem Test, No treatment.
Gyp & Red Bed	400	830	
Red Bed & Gyp	830	1025	
Red Bed, Gyp, Anhydrite	1025	1439	
Anhydrite & Shale	1439	1670	
Shale	1670	2245	
Lime & Shale	2245	2592	
Shale & Lime	2592	2750	
Lime & Shale	2750	3040	
Shale & Lime	3040	3190	
Lime & Shale	3190	3446	
Shale & Lime	3446	3532	
Lime & Shale	3532	3723	
Shale & Lime	3723	3834	
Lime & Shale	3834	4019	
Shale & Lime	4019	4135	
Lime & Shale	4135	4297	
Shale	4297	4399	
Lime, Shale, Sand	4399	4489	
Lime & Shale	4489	4576	
Shale & Lime	4576	4703	
Shale & Sand	4703	4957	
Shale	4957	5000	
Total Depth		5000	
PBTD		4958	

32-34-41w