

DRILL STEM TEST REPORT

Prepared For: **Duncan Oil Properties Inc.**

100 Park Ave. Suite 1200 Oklahoma City OK.
73102

ATTN: D. Humphrey

8/35/27

Judy #1-8

Start Date: 2004.11.05 @ 03:15:55

End Date: 2004.11.05 @ 12:00:10

Job Ticket #: 20072 DST #: 1

Trilobite Testing, Inc

PO Box 362 Hays, KS 67601

ph: 785-625-4778 fax: 785-625-5620

Duncan Oil Properties Inc.

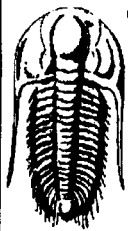
Judy #1-8

8/35/27

DST # 1

Council Grove C

2004.11.05



**TRILOBITE
TESTING, INC.**

DRILL STEM TEST REPORT

Duncan Oil Properties Inc.

Judy #1-8

100 Park Ave. Suite 1200 Oklahoma City OK.
73102

8/35/27

ATTN: D. Humphrey

Job Ticket: 20072

DST#: 1

Test Start: 2004.11.05 @ 03:15:55

GENERAL INFORMATION:

Formation: **Counsil Grove C**

Deviated: No Whipstock: ft (KB)

Time Tool Opened: 07:24:25

Time Test Ended: 12:00:10

Test Type: Conventional Straddle

Tester: Harley Davidson

Unit No: 15

Interval: **3044.00 ft (KB) To 3080.00 ft (KB) (TVD)**

Total Depth: 3342.00 ft (KB) (TVD)

Hole Diameter: 7.78 inches Hole Condition: Fair

Reference Elevations: 2340.00 ft (KB)

2327.00 ft (CF)

KB to GR/CF: 13.00 ft

Serial #: 6769

Inside

Press@RunDepth: 33.66 psig @ 3074.00 ft (KB)

Start Date: 2004.11.05

End Date:

2004.11.05

Start Time: 03:15:57

End Time:

12:00:10

Capacity: 7000.00 psig

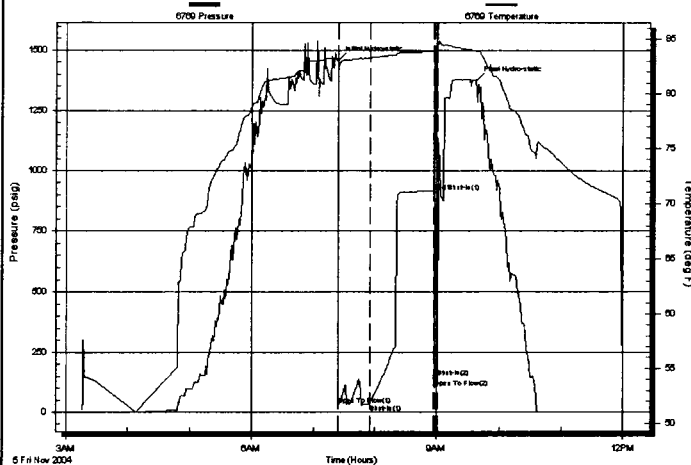
Last Calib.: 1899.12.30

Time On Btm: 2004.11.05 @ 07:24:10

Time Off Btm: 2004.11.05 @ 09:38:10

TEST COMMENT: IF- WBB BOB 25 min.
IS- No blow back
FF- WBB for about 3min, lost packer seat, Pulled it
FS- No SI, Came out of hole

Pressure vs. Time



PRESSURE SUMMARY

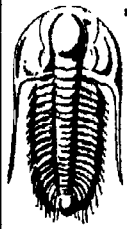
Time (Min.)	Pressure (psig)	Temp (deg F)	Annotation
0	1459.21	83.11	Initial Hydro-static
1	28.03	82.45	Open To Flow (1)
31	33.66	83.25	Shut-In(1)
93	913.70	83.86	End Shut-In(1)
94	100.42	83.90	Open To Flow (2)
97	144.88	84.09	Shut-In(2)
134	1375.62	83.90	Final Hydro-static

Recovery

Length (ft)	Description	Volume (bbl)
1364.00	100% mud	16.31

Gas Rates

Choke (inches)	Pressure (psig)	Gas Rate (Mcf/d)



**TRILOBITE
TESTING, INC.**

DRILL STEM TEST REPORT

TOOL DIAGRAM

Duncan Oil Properties Inc.

Judy #1-8

100 Park Ave. Suite 1200 Oklahoma City OK.
73102

8/35/27

Job Ticket: 20072

DST#: 1

ATTN: D. Humphrey

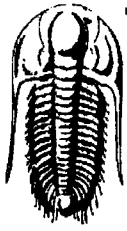
Test Start: 2004.11.05 @ 03:15:55

Tool Information

Drill Pipe:	Length: 2735.00 ft	Diameter: 3.80 inches	Volume: 38.36 bbl	Tool Weight: 20000.00 lb
Heavy Wt. Pipe:	Length: 0.00 ft	Diameter: 0.00 inches	Volume: 0.00 bbl	Weight set on Packer: 30000.00 lb
Drill Collar:	Length: 310.00 ft	Diameter: 2.25 inches	Volume: 1.52 bbl	Weight to Pull Loose: 85000.00 lb
			<u>Total Volume: 39.88 bbl</u>	Tool Chased 0.00 ft
Drill Pipe Above KB:	29.00 ft			String Weight: Initial 70000.00 lb
Depth to Top Packer:	3044.00 ft			Final 78000.00 lb
Depth to Bottom Packer:	3341.00 ft			
Interval between Packers:	297.00 ft			
Tool Length:	325.00 ft			
Number of Packers:	1	Diameter: 6.75 inches		

Tool Comments:

Tool Description	Length (ft)	Serial No.	Position	Depth (ft)	Accum. Lengths
Shut In Tool	5.00			3021.00	
Hydraulic tool	5.00			3026.00	
Jars	5.00			3031.00	
Safety Joint	3.00			3034.00	
Packer	5.00			3039.00	28.00 Bottom Of Top Packer
Packer	5.00			3044.00	
Perforations	1.00			3045.00	
Stubb	5.00			3050.00	
Perforations	24.00			3074.00	
Recorder	0.00	6769	Inside	3074.00	
Blank Off Sub	1.00			3075.00	
Packer - Shale	5.00			3080.00	
Change Over Sub	1.00			3081.00	
Drill Pipe	248.00			3329.00	
Change Over Sub	1.00			3330.00	
Perforations	7.00			3337.00	
Bullnose	4.00			3341.00	297.00 Bottom Packers & Anchor
Total Tool Length:	325.00				



**TRILOBITE
TESTING, INC.**

DRILL STEM TEST REPORT

FLUID SUMMARY

Duncan Oil Properties Inc.

Judy #1-8

100 Park Ave. Suite 1200 Oklahoma City OK.
73102

8/35/27

Job Ticket: 20072

DST#: 1

ATTN: D. Humphrey

Test Start: 2004.11.05 @ 03:15:55

Mud and Cushion Information

Mud Type: Gel Chem	Cushion Type:	Oil API:	deg API
Mud Weight: 9.00 lb/gal	Cushion Length: ft	Water Salinity:	ppm
Viscosity: 40.00 sec/qt	Cushion Volume: bbl		
Water Loss: 9.17 in ³	Gas Cushion Type:		
Resistivity: ohm.m	Gas Cushion Pressure: psig		
Salinity: 11000.00 ppm			
Filter Cake: inches			

Recovery Information

Recovery Table

Length ft	Description	Volume bbl
1364.00	100% mud	16.309

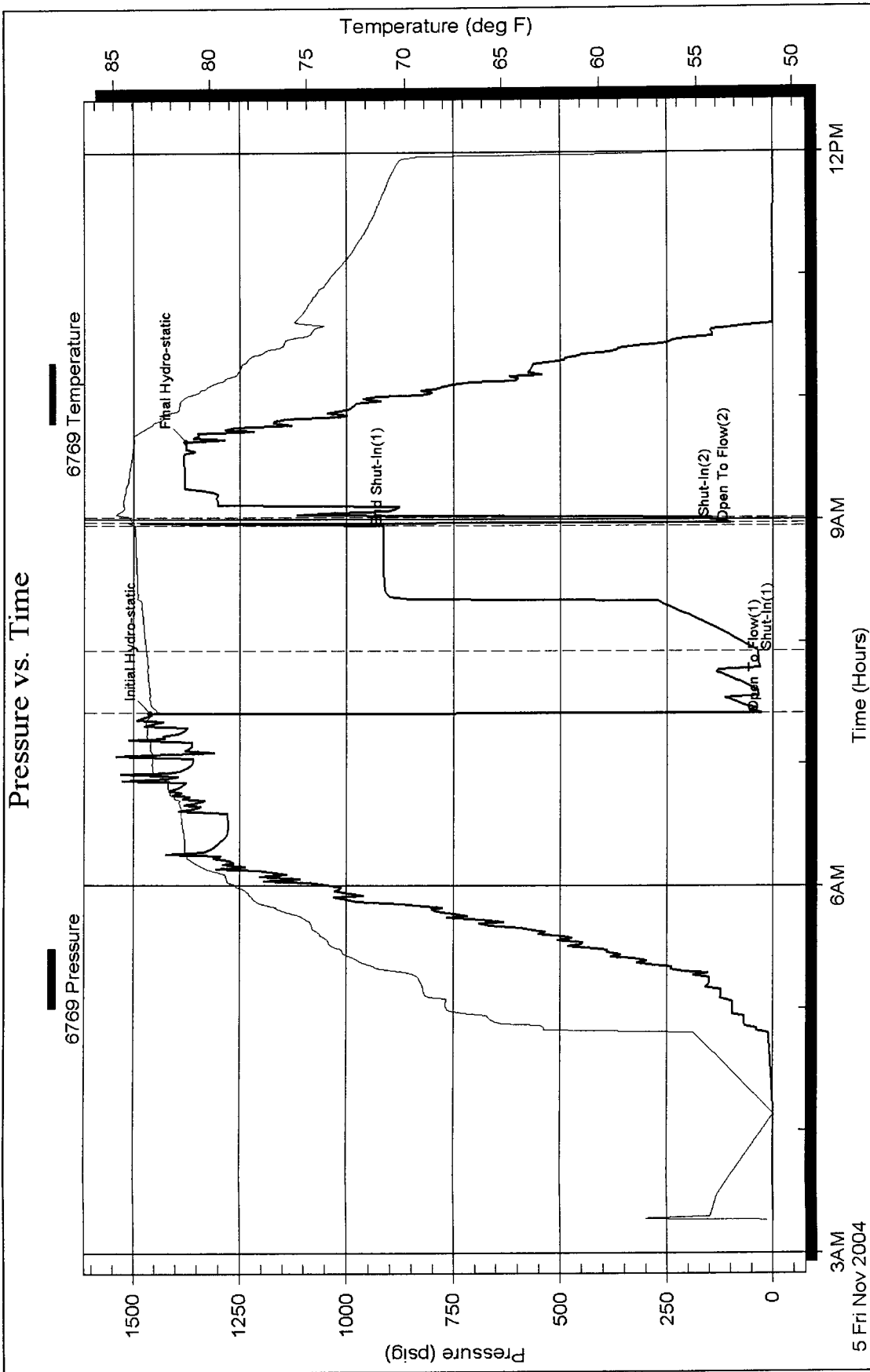
Total Length: 1364.00 ft Total Volume: 16.309 bbl

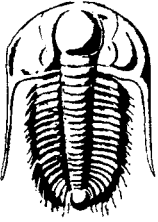
Num Fluid Samples: 0 Num Gas Bombs: 0 Serial #:

Laboratory Name: Laboratory Location:

Recovery Comments: Lost packer seat on FF

Pressure vs. Time





TRILOBITE TESTING INC.

P.O. Box 362 • Hays, Kansas 67601

TNV
6928

No 20072

05/03

Test Ticket

Well Name & No. Judy # 1-8 Test No. 1 Date 11-5-04
 Company Duncan Oil Properties Inc Zone Tested C. Council Grove
 Address 100 Park Ave. Suite 1200 OK City, OK 73102 Elevation 2340 KB 2327 GL
 Co. Rep / Geo. Humphrey Cont. _____ Est. Ft. of Pay _____ Por. _____ %
 Location: Sec. 8 Twp. 35 Rge. 27 Co. Mead State KS.
 No. of Copies _____ Distribution Sheet (Y, N) _____ Turnkey (Y, N) _____ Evaluation (Y, N) _____

Interval Tested 3044-3080 Initial Str Wt./Lbs. 70 K Unseated Str Wt./Lbs. 78 K
 Anchor Length 36 - 262 take pipe Wt. Set Lbs. 35 K Wt. Pulled Loose/Lbs. 85 K
 Top Packer Depth _____ Tool Weight 2000
 Bottom Packer Depth _____ Hole Size 7 7/8" ✓ Rubber Size 6 3/4" ✓
 Total Depth 3342 Wt. Pipe Run 0 Drill Collar Run 309
 Mud Wt. 8.9 LCM 3.5 Vis. 40 WL 9.2 Drill Pipe Size 4.5 Ft. Run 2982
 Blow Description IF - Weak building blow BOB 25 min
ISI - No blow back
FF - Weak "BB" lost packer seat 3 min into
FSI - Pulled tool

Recovery - Total Feet 1364 GIP 0 Ft. in DC 0 Ft. in DP 0
 Rec. 1364 Feet of _____ %gas _____ %oil _____ %water 100 %mud
 Rec. _____ Feet of _____ %gas _____ %oil _____ %water _____ %mud
 Rec. _____ Feet of _____ %gas _____ %oil _____ %water _____ %mud
 Rec. _____ Feet of _____ %gas _____ %oil _____ %water _____ %mud
 Rec. _____ Feet of _____ %gas _____ %oil _____ %water _____ %mud
 BHT _____ °F Gravity _____ °API D @ _____ °F Corrected Gravity _____ °API
 RW _____ @ _____ °F Chlorides 0 ppm Recovery 0 Chlorides 11000 ppm System

	AK-1	Alpine	Recorder No.	Test
(A) Initial Hydrostatic Mud	<u>1459</u>	PSI	<u>6724</u>	<u>990°</u>
(B) First Initial Flow Pressure	<u>29</u>	PSI	(depth) <u>3340</u>	Elec. Rec. _____
(C) First Final Flow Pressure	<u>277</u>	PSI	Recorder No. _____	Jars <u>200°</u>
(D) Initial Shut-In Pressure	<u>914</u>	PSI	(depth) <u>3080</u>	Safety Jt. <u>50°</u>
(E) Second Initial Flow Pressure	<u>1376</u>	PSI	Recorder No. <u>6769</u>	Circ Sub _____
(F) Second Final Flow Pressure		PSI	(depth) <u>3045</u>	Sampler _____
(G) Final Shut-In Pressure		PSI	Initial Opening <u>30</u>	Straddle <u>250°</u>
(Q) Final Hydrostatic Mud		PSI	Initial Shut-In <u>60</u>	Ext. Packer _____
			Final Flow <u>60</u> <u>DID not get to 11</u>	Shale Packer _____
			Final Shut-In <u>60</u> <u>get to 11</u>	Mileage <u>180 = 180°</u>
			T-On Location <u>0130</u>	Sub Total: <u>1630°</u> <u>1580</u>
			T-Started <u>0330</u>	Std. By <u>8:25 9:15</u>
			T-Open <u>0725</u>	Other _____
			T-Pulled <u>0915</u>	Total: <u>1720°</u> <u>1655</u>
			T-Out <u>12:00</u>	

TRILOBITE TESTING INC. SHALL NOT BE LIABLE FOR DAMAGED OF ANY KIND OF THE PROPERTY OR PERSONNEL OF THE ONE FOR WHOM A TEST IS MADE, OR FOR ANY LOSS SUFFERED OR SUSTAINED, DIRECTLY OR INDIRECTLY, THROUGH THE USE OF ITS EQUIPMENT, OR ITS STATEMENTS OR OPINION CONCERNING THE RESULTS OF ANY TEST. TOOLS LOST OR DAMAGED IN THE HOLE SHALL BE PAID FOR AT COST BY THE PARTY FOR WHOM THE TEST IS MADE.

Approved By H. S. Humphrey
 Our Representative Harley Dick

