

IMPORTANT
Kans. Geo. Survey request
samples on this well.

SEP 03 1975
AMA. PRDD.

KANSAS DRILLERS LOG

API No. 15 — 119 — 20,208
County Number

Operator
Mesa Petroleum Co.

Address
Box 2009 Amarillo, Texas 79105

Well No. #1-17 Lease Name Barragree

Footage Location
1320 feet from (N) line 2000 feet from (E) line

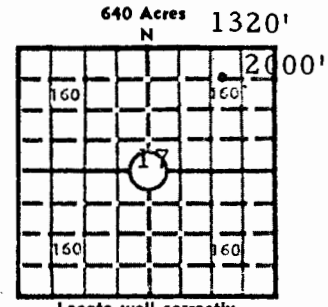
Principal Contractor Sage Drilling Co., Inc. Geologist Dave Ward, Denver Office

Spud Date 9/5/75 Total Depth 6475' P.B.T.D. ----

Date Completed Dry Hole Oil Purchaser -----

S. 17 T. 35 R. 28 ^W_E
Loc. 1320' FNL & 2000 FEL

County Meade



Elev.: Gr. 2285'

DF 2293' KB -----

CASING RECORD

Report of all strings set — surface, intermediate, production, etc.

Purpose of string	Size hole drilled	Size casing set (in O.D.)	Weight lbs/ft.	Setting depth	Type cement	Sacks	Type and percent additives
Surface	12-1/4"	8-5/8"	23	1496'KB	HOWCO Lt. Common	700 200	

LINER RECORD

PERFORATION RECORD

Top, ft.	Bottom, ft.	Sacks cement	Shots per ft.	Size & type	Depth interval

TUBING RECORD

Size	Setting depth	Packer set at

ACID, FRACTURE, SHOT, CEMENT SQUEEZE RECORD

Amount and kind of material used	Depth interval treated

INITIAL PRODUCTION

Date of first production <u>N/A</u>	Producing method (flowing, pumping, gas lift, etc.)				
RATE OF PRODUCTION PER 24 HOURS	Oil bbis.	Gas MCF	Water bbis.	Gas-oil ratio CFPB	
Disposition of gas (vented, used on lease or sold)			Producing interval(s)		

INSTRUCTIONS: As provided in KCC Rule 82-2-125, within 90 days after completion of a well, one completed copy of this Drillers Log shall be transmitted to the State Geological Survey of Kansas, 4150 Monroe Street, Wichita, Kansas 67209. Copies of this form are available from the Conservation Division, State Corporation Commission, 3830 So. Meridian (P.O. Box 17027), Wichita, Kansas 66217. Phone AC 316-522-2206. If confidential custody is desired, please note Rule 82-2-125. Drillers Logs will be on open file in the Oil and Gas Division, State Geological Survey of Kansas, Lawrence, Kansas 66044.

XC: 1 KGS, 1 B.King, 1 file

Mesa Petroleum Co. #1-17 Barragree
1320' FNL & 2000' FEL, Sec. 17-T35S-R28W
Meade County, Kansas

0'-2495': Red Shale, Gypsum, Anhydrite, and Salt
2495'-3655': Limestone and Dolomite, w/interbedded Shale
3655'-4435': Shale - Heebner @ 4336'
4435'-5520': Limestone w/interbedded Shale
 Toronto 4435'
 Lansing 4550'
 Marmaton 5290'
 Cherokee 5520'
5520'-5898': Shale w/interbedded Limestone
5898'-6036': Shale and Limestone
 Morrow Formation 5898'
6036'-6080': Sand and Shale
6080'-6395': Limestone w/interbedded Shale
 Chester 6080'
6395'-6460': Sand and Shale
6460'-6475': Sandy Limestone
 St. Genevieve 6460'

RECORDED
SEP 23 1975

AMA. PROD.

