

16-35-29W P

S.D.

SIDE ONE



AFFIDAVIT OF COMPLETION FORM

(REV) ACO-1

This form shall be filed in duplicate with the Kansas Corporation Commission, 200 Colorado Derby Building, Wichita, Kansas 67202, within ten days after the completion of the well, regardless of how the well was completed.

Attach separate letter of request if the information is to be held confidential. If confidential, only file one copy. Information on side one will be of public record and side two will then be held confidential.

Circle one: Oil, Gas, Dry, SWD, OWWO, Injection. Type and complete ALL sections.

Applications must be filed for dual completion, commingling, SWD and injection, T.A.

Attach wireline logs (i.e. electrical log, sonic log, gamma ray neutron log, etc.). KCC # (316) 263-3238. (Rules 82-2-105 & 82-2-125)

OPERATOR R. CLAY UNDERWOOD

ADDRESS Suite 420 Oil & Gas Bldg.

Wichita Falls, Texas 76301

*CONTACT PERSON Betty Wolford

PHONE 817 723-4329

PURCHASER Diamond Shamrock

ADDRESS P. O. Box 631

Amarillo, Texas 79173

DRILLING CONTRACTOR Service Drilling Company

ADDRESS P. O. Box 5320

Borger, Texas 79007

PLUGGING CONTRACTOR

ADDRESS

CONSERVATION DIVISION
Wichita, Kansas

TOTAL DEPTH 6370' PBD 6370'

PUD DATE 10/24/81 DATE COMPLETED 11/26/81

ELEV: GR 2452' DF 2461' KB 2462'

DRILLED WITH (CABLE) (ROTARY) (AIR) TOOLS

Amount of surface pipe set and cemented 1517' 8 5/8"

A F F I D A V I T

STATE OF TEXAS, COUNTY OF WICHITA, SS, I, R. CLAY UNDERWOOD

OF LAWFUL AGE, BEING FIRST DULY SWORN UPON HIS OATH,

DEPOSES THAT HE IS Owner (FOR)(OF) R. CLAY UNDERWOOD

OPERATOR OF THE Jessie S. Adams LEASE, AND IS DULY AUTHORIZED TO MAKE

THIS AFFIDAVIT FOR AND ON THE BEHALF OF SAID OPERATOR. THAT WELL NO. WELL #18

API NO. 15-119-20,553

COUNTY Meade

FIELD Cimarron Bend

PROD. FORMATION Lansing

LEASE Jessie S. Adams

WELL NO. "F" #18

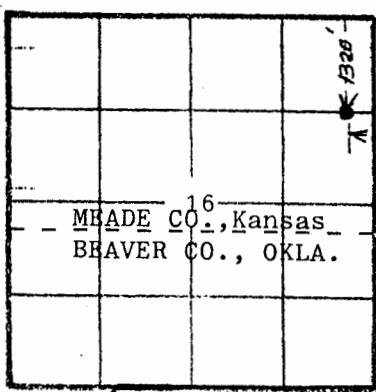
WELL LOCATION Sec. 16, R35S, R29W

1320 Ft. from North Line and

330 Ft. from East Line of

the NE/4 SEC. 16 TWP. 35S RGE. 29W

WELL PLAT



KCC
KGS
(Office Use)
Well F-18

RELEASED

Date: JAN 1 1984

FROM CONFIDENTIAL

Geological Survey
WICHITA BRANCH

RECEIVED
STATE CORPORATION COMMISSION

APR 12 1982

Show all important zones of porosity and contents thereof; cored intervals, and all drill-stem tests, including depth interval tested, cushion used, time tool open, flowing and shut-in pressures, and recoveries.

SHOW GEOLOGICAL MARKERS, LOGS RUN, OR OTHER DESCRIPTIVE INFORMATION:

FORMATION DESCRIPTION, CONTENTS, ETC.	TOP	BOTTOM	NAME	DEPTH
Sand	0	408	Cyberlook ::	6350'
Red Bed	408	1617	Compensated	
Red Shale	1617	2064	Neuton-Formation	
Anhy., Shale	2064	1514	Density	6374'
Shale	2514	2537	Dual Induction/ SFL-Linear	
Shale, Lime	2537	3006	Corrilation	6372'
Dolomite, Shale, Lime	3006	3490		
Dolomite	3490	3752	<u>CASING RECORD</u>	
Dolomite, Shale, Lime	3752	4142	Ran 36 jts. 8 5/8" casing and cemented w/700 sx Lite 2% c .	
Dolomite, Shale, Lime	4142	4450	and 150 sx Class 'H' 3% c.c.	
Lime, Shale	4450	6370 TD	Ran 147 jts. 5 1/2" casing and cemented w/Light 150 sx 50/50 poz. 12.5% gilsonite, 12% gilsonite 12% sal	

ACID, FRACTURE, SHOT, CEMENT SQUEEZE RECORD

Amount and kind of material used	Depth interval treated
Acidized w/4,000 gal. 15% MCA. Fraced w/12,000 gal.	4555-4593'
15% WE w/45 balls flush w/142 bbls. 2% KCC	
Date of first production March 27, 1982	Producing method (flowing, pumping, gas lift, etc.) Pumping
Gravity	38
RATE OF PRODUCTION PER 24 HOURS	Oil 50 bbls. Gas nil MCF Water % 10 bbls. Gas-oil ratio 4-1 CFPB
Disposition of gas (vented, used on lease or sold)	Perforations 4555-4593'
used on lease	

Report of all strings set — surface, intermediate, production, etc. CASING RECORD (New) or (Used)

Purpose of string	Size hole drilled	Size casing set (In O.D.)	Weight lbs/ft.	Setting depth	Type cement	Sacks	Type and percent additives
Surface	7 7/8"	8 5/8"	24#	1517'	Halco Lite Class H	700 150	2% c.c. 3% c.c.
Production		5 1/2"	15.5#	6030'	Halco Lite 50/50 poz.	150	12.5% gilsonite 12% salt

LINER RECORD

PERFORATION RECORD

Top, ft.	Bottom, ft.	Sacks cement	Shots per ft.	Size & type	Depth interval
			2	.50	4555-4593'
TUBING RECORD					
Size	Setting depth	Packer set at			
2 3/8"	4555				

PC

R. CLAY UNDERWOOD

Jessie Adams F #18 Well
Mead County, Kansas

16 - 35 - 29w

OPERATIONS COMMENCED: 10/24/81

OPERATIONS COMPLETED: 11/26/81

DRILLING LOG

10/24	0 - 408	Sand
10/25	408 - 1617	Red Bed
10/27	1617 - 2064	Red Shale
10/28	2064 - 2514	Anhy., Shale
10/29	2514 - 2537	Shale
10/30	2537 - 3006	Shale, Lime,
10/31	3006 - 3490	Dolomite, Shale, Lime
11/1	3490 - 3752	Dolomite
11/2	3752 - 4142	Dolomite, Shale, Lime
11/3	4142 - 4450	Dolomite, Shale, Lime
11/5	4450 - 4584	Lime, Shale
11/11	4584 - 4947	Lime, Shale
11/12	4947 - 5256	Lime, Shale
11/13	5256 - 5476	Lime, Shale
11/14	5476 - 5658	Lime, Shale
11/15	5658 - 5862	Lime, Shale
11/16	5862 - 5980	Lime, Shale
11/17	5980 - 5988	Lime, Shale
11/18	5988 - 5994	Lime, Shale
11/19	5994 - 6110	Lime, Shale
11/21	6110 - 6235	Lime, Shale
11/22	6235 - 6257	Lime, Shale
11/23	6257 - 6359	Lime, Shale
11/24	6359 - 6370	Lime, Shale

CASING RECORD

10/26	Ran 36 joints, 8 5/8" casing and cemented with 700 sks. Lite 2% c.c. and 150 sks. Class 'H' 3% c.c.
11/26	Ran 147 joints 5 1/2" casing and cemented.

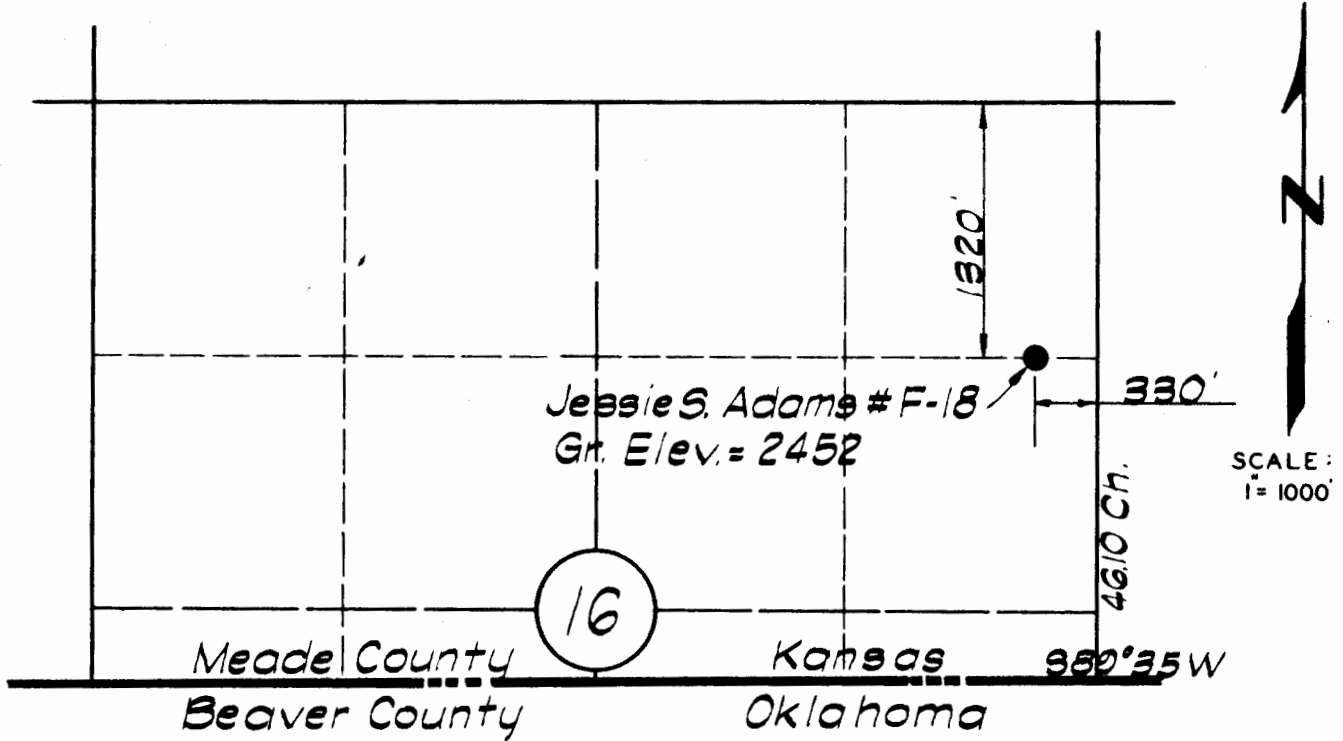
State Geological Survey
WICHITA BRANCH

RECEIVED
STATE CORPORATION COMMISSION

APR 12 1982

CONSERVATION DIVISION
Wichita, Kansas

16-35-29W



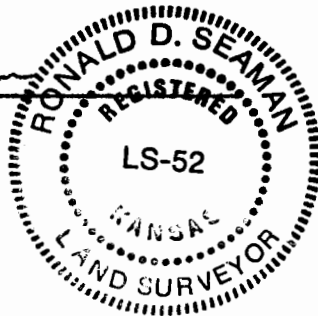
WELL DESCRIPTION

JESSIE S. ADAMS, et al, #F-18

1320 feet from the North line and 330 feet from the East line of Section (16), Township Thirty-five South (T35S), Range Twenty-nine West (R29W) of the Sixth Principal Meridian located in Meade County, Kansas.

I, Ronald D. Seaman, a Registered Land Surveyor in the State of Kansas, do hereby certify that the survey as shown hereon was completed under my supervision on the 1st day of June, 1981, and is true and correct to the best of my knowledge.

Ronald D. Seaman
 Ronald D. Seaman, L.S.



State Geological Survey
 WICHITA BRANCH

REV. NO.	DATE	REVISION	BY
UNDERWOOD OIL COMPANY JESSIE S. ADAMS, #F-18 Sec. 16-T35S-R29W Meade County Kansas			
NIXON & SEAMAN ENGINEERS BOX 81 LIBERAL, KANSAS		DATE: 6-3-81 DRAWN BY: W.R.L. DRWG. NO 7001 SHEET NO. 1 OF 1	