

15-175-21577

3-35s-31w

WELL NAME: Kansas City Life #3
COMPANY: R.C. Taylor
LOCATION: Sec. 3 Twp. 35s Rge. 31w
Seward County Kansas
DATE: 11-19-96

TRILOBITE TESTING L.L.C.

OPERATOR : R.C.TAYLOR DATE 11/9/96
 WELL NAME: KANSAS CITY KB 2669.00 ft TICKET NO: 8877 DST #1
 LOCATION : 3-35s-31w Seward KS GR 2680.00 ft FORMATION: Chase
 INTERVAL : 2700.00 To 2717.00 ft TD 2717.00 ft TEST TYPE: CONVENTIONAL

RECORDER DATA

Mins	Field	1	2	3	4	TIME DATA-----
PF 30 Rec.	11086	11086	2350			PF Fr. 0421 to 0451 hr
SI 60 Range (Psi)	4350.0	4350.0	4995.0	0.0	0.0	IS Fr. 0451 to 0551 hr
SF 45 Clock (hrs)	12hr.	12	elec.			SF Fr. 0551 to 0636 hr
FS 90 Depth (ft)	2714.0	2714.0	2703.0	0.0	0.0	FS Fr. 0636 to 0806 hr

	Field	1	2	3	4	
A. Init Hydro	1314.0	1334.0	1303.0	0.0	0.0	T STARTED 0233 hr
B. First Flow	87.0	91.0	85.0	0.0	0.0	T ON BOTM 0419 hr
B1. Final Flow	98.0	1.0	92.0	0.0	0.0	T OPEN 0421 hr
C. In Shut-in	546.0	564.0	581.0	0.0	0.0	T PULLED 0806 hr
D. Init Flow	76.0	91.0	76.0	0.0	0.0	T OUT 0935 hr
E. Final Flow	98.0	95.0	97.0	0.0	0.0	
F. Fl Shut-in	535.0	562.0	580.0	0.0	0.0	TOOL DATA-----
G. Final Hydro	1293.0	1306.0	1274.0	0.0	0.0	Tool Wt. 2100.00 lbs
Inside/Outside	0	0	I			Wt Set On Packer 20000.00 lbs
						Wt Pulled Loose 96000.00 lbs
						Initial Str Wt 76000.00 lbs
						Unseated Str Wt 77000.00 lbs
						Bot Choke 0.75 in
						Hole Size 7.88 in
						D Col. ID 2.25 in
						D. Pipe ID 3.80 in
						D.C. Length 621.00 ft
						D.P. Length 2078.00 ft
						H.W. I.D 2.70 in

RECOVERY

Tot Fluid 140.00 ft of 140.00 ft in DC and 0.00 ft in DP
 140.00 ft of Gas cut mud 80% mud 20% gas
 0.00 ft of
 0.00 ft of
 0.00 ft of
 0.00 ft of
 0.00 ft of
 0.00 ft of
 0.00 ft of Est. Feet of Pay ----- 15
 SALINITY 0.00 P.P.M. A.P.I. Gravity 0.00

MUD DATA-----

Mud Type	CHEMICAL
Weight	8.80 lb/cf
Vis.	39.00 S/L
W.L.	8.80 in3
F.C.	2.32 in
Mud Drop	

BLOW DESCRIPTION

Initial Flow -
 Strong blow. Bottom of bucket in 12 min.

Final Flow -
 Strong blow. Bottom of bucket in 1 min.

Gas to surface in 14 min. Too small to measure.

Amt. of fill	10.00 ft
Btm. H. Temp.	88.00 F
Hole Condition	FAIR
% Porosity	10.00
Packer Size	6.75 in
No. of Packers	2
Cushion Amt.	0.00
Cushion Type	
Reversed Out	
Tool Chased	
Tester	Darren Amerine
Co. Rep.	Gordon Keen
Contr.	Beredco
Rig #	4
Unit #	
Pump T.	

SAMPLES:
 SENT TO:

Test Successful: Y

*** TOOL DIAGRAM *** CONVENTIONAL

WELL NAME: KANSAS CITY	P.O. SUB	
	C.O. SUB 1'	2679
LOCATION : 3-35s-31w Seward KS	S.I. TOOL 5'	2684
TICKET No. 8877 D.S.T. No. 1 DATE 11/9/96		
TOTAL TOOL TO BOTTOM OF TOP PACKERS 21'	HMV 5'	2689
INTERVAL TOOL		
BOTTOM PACKERS AND ANCHOR 17'	JARS n/a	
TOTAL TOOL 38'		
DRILL COLLAR ANCHOR IN INTERVAL		
D.C. ANCHOR STND.Stands Single Total	SAFETY JOINT n/a	
D.P. ANCHOR STND.Stands Single Total	PACKER 5'	2695
TOTAL ASSEMBLY	PACKER 5'	2700
D.C. ABOVE TOOLS.Stands7 Single Total 621'	DEPTH 2700	
D.P. ABOVE TOOLS.Stands22 Single 1 Total 2087'	STUBB	
TOTAL DRILL COLLARS DRILL PIPE & TOOLS .. 2746	ANCHOR 2'perfs	2701
	Alpine rec.	2705
TOTAL DEPTH 2717'		
TOTAL DRILL PIPE ABOVE K.B. 29'		
REMARKS:		
	T.C.	
	DEPTH 2702	
	n/a	
	n/a	
	10'perfs	2712
	AK-1 REC	2714
	BULLNOSE 5'	2717
	T.D.	

 ALPINE SUBSURFACE ELECTRONICS PROBE INCREMENTS LISTING

TEST: 8877 DST#1 #3 KANSAS CITY LIFE R.C. TAYLOR

DATE: 11/09/96

TIME: 02:33:36

	Time	Pressure PSI _g	delta P PSI _g	Temp. DEG F	(T+dT)/dT	P ² /10 ⁶
***** Initial Hydro.	106.00	1303.9	0.0	86.88		
***** Start Flow 1	0.00	84.8	0.0	87.05		
	1.00	79.1	-5.6	87.32		
	2.00	79.6	-5.2	87.65		
	3.00	79.6	-5.1	87.95		
	4.00	80.5	-4.3	88.19		
	5.00	81.8	-2.9	88.37		
	6.00	110.2	25.4	88.51		
	7.00	154.5	69.7	88.63		
	8.00	84.3	-0.5	88.71		
	9.00	84.4	-0.3	88.77		
	10.00	84.8	0.0	88.80		
	11.00	85.5	0.8	88.80		
	12.00	86.9	2.2	88.79		
	13.00	87.5	2.8	88.77		
	14.00	87.4	2.7	88.75		
	15.00	87.9	3.1	88.72		
	16.00	88.5	3.8	88.70		
	17.00	88.7	3.9	88.67		
	18.00	89.7	5.0	88.63		
	19.00	89.8	5.0	88.60		
	20.00	90.2	5.5	88.56		
	21.00	90.4	5.6	88.53		
	22.00	90.6	5.9	88.50		
	23.00	90.9	6.1	88.48		
	24.00	91.0	6.2	88.46		
	25.00	91.4	6.6	88.45		
	26.00	91.5	6.7	88.43		
	27.00	91.0	6.2	88.43		
***** End Flow 1	28.00	91.6	6.8	88.42		
***** Start Shutin 1	0.00	91.6	0.0	88.42	0.0000	0.008
	1.00	103.9	12.3	88.41	29.0000	0.011
	2.00	144.6	53.0	88.41	15.0000	0.021
	3.00	189.2	97.6	88.41	10.3333	0.036
	4.00	236.4	144.9	88.42	8.0000	0.056
	5.00	284.3	192.8	88.42	6.6000	0.081
	6.00	330.8	239.2	88.43	5.6667	0.109
	7.00	373.1	281.5	88.43	5.0000	0.139
	8.00	410.5	318.9	88.45	4.5000	0.168
	9.00	442.5	350.9	88.45	4.1111	0.196
	10.00	469.6	378.0	88.44	3.8000	0.220
	11.00	492.6	401.0	88.45	3.5455	0.243
	12.00	511.5	420.0	88.45	3.3333	0.262
	13.00	527.1	435.5	88.44	3.1538	0.278
	14.00	539.4	447.8	88.43	3.0000	0.291
	15.00	549.3	457.7	88.42	2.8667	0.302
	16.00	556.8	465.2	88.41	2.7500	0.310
	17.00	562.4	470.8	88.40	2.6471	0.316
	18.00	566.3	474.8	88.39	2.5556	0.321
	19.00	569.4	477.8	88.37	2.4737	0.324
	20.00	571.4	479.8	88.36	2.4000	0.326

ALPINE SUBSURFACE ELECTRONICS PROBE INCREMENTS LISTING

TEST: 8877 DST#1 #3 KANSAS CITY LIFE R.C. TAYLOR

DATE: 11/09/96

TIME: 02:33:36

	Time	Pressure PSIg	delta P PSIg	Temp. DEG F	(T+dT)/dT	P ² /10 ⁶
	21.00	573.0	481.4	88.35	2.3333	0.328
	22.00	574.2	482.7	88.34	2.2727	0.330
	23.00	575.0	483.4	88.33	2.2174	0.331
	24.00	575.7	484.1	88.32	2.1667	0.331
	25.00	576.2	484.7	88.30	2.1200	0.332
	26.00	576.7	485.1	88.30	2.0769	0.333
	27.00	577.0	485.4	88.28	2.0370	0.333
	28.00	577.3	485.8	88.28	2.0000	0.333
	29.00	577.8	486.2	88.28	1.9655	0.334
	30.00	577.8	486.3	88.27	1.9333	0.334
	31.00	578.1	486.5	88.26	1.9032	0.334
	32.00	578.3	486.7	88.26	1.8750	0.334
	33.00	578.5	486.9	88.25	1.8485	0.335
	34.00	578.8	487.2	88.25	1.8235	0.335
	35.00	578.8	487.3	88.24	1.8000	0.335
	36.00	579.1	487.5	88.24	1.7778	0.335
	37.00	579.0	487.5	88.23	1.7568	0.335
	38.00	579.3	487.7	88.22	1.7368	0.336
	39.00	579.3	487.8	88.22	1.7179	0.336
	40.00	579.5	487.9	88.21	1.7000	0.336
	41.00	579.5	487.9	88.23	1.6829	0.336
	42.00	579.6	488.0	88.19	1.6667	0.336
	43.00	579.8	488.2	88.18	1.6512	0.336
	44.00	580.0	488.4	88.17	1.6364	0.336
	45.00	579.9	488.4	88.18	1.6222	0.336
	46.00	579.9	488.4	88.16	1.6087	0.336
	47.00	580.1	488.5	88.16	1.5957	0.336
	48.00	580.1	488.5	88.16	1.5833	0.336
	49.00	580.2	488.6	88.16	1.5714	0.337
	50.00	580.3	488.8	88.16	1.5600	0.337
	51.00	580.3	488.8	88.17	1.5490	0.337
	52.00	580.3	488.8	88.17	1.5385	0.337
	53.00	580.4	488.9	88.18	1.5283	0.337
	54.00	580.4	488.9	88.18	1.5185	0.337
	55.00	580.6	489.0	88.18	1.5091	0.337
	56.00	580.6	489.0	88.18	1.5000	0.337
	57.00	580.6	489.0	88.19	1.4912	0.337
	58.00	580.8	489.3	88.19	1.4828	0.337
	59.00	580.8	489.3	88.18	1.4746	0.337
***** End Shut-in 1	60.00	580.8	489.3	88.18	1.4667	0.337
***** Start Flow 2	0.00	75.9	0.0	88.12		
	1.00	81.2	5.4	88.12		
	2.00	80.8	5.0	88.12		
	3.00	82.2	6.4	88.12		
	4.00	85.6	9.7	88.13		
	5.00	82.1	6.2	88.14		
	6.00	82.8	7.0	88.16		
	7.00	83.7	7.8	88.17		
	8.00	84.3	8.5	88.18		
	9.00	85.3	9.4	88.18		
	10.00	86.4	10.5	88.20		

ALPINE SUBSURFACE ELECTRONICS PROBE INCREMENTS LISTING

TEST: 8877 DST#1 #3 KANSAS CITY LIFE R.C. TAYLOR

DATE: 11/09/96

TIME: 02:33:36

Time	Pressure PSig	delta P PSig	Temp. DEG F	(T+dT)/dT	P ² /10 ⁶
11.00	84.7	8.8	88.20		
12.00	86.9	11.1	88.20		
13.00	85.2	9.3	88.20		
14.00	86.7	10.8	88.20		
15.00	86.3	10.4	88.20		
16.00	87.9	12.1	88.20		
17.00	85.0	9.1	88.20		
18.00	88.2	12.3	88.20		
19.00	89.3	13.4	88.18		
20.00	89.4	13.5	88.17		
21.00	89.0	13.2	88.15		
22.00	89.0	13.1	88.14		
23.00	89.9	14.0	88.13		
24.00	92.5	16.6	88.11		
25.00	89.6	13.8	88.10		
26.00	94.3	18.5	88.08		
27.00	92.8	17.0	88.07		
28.00	95.1	19.2	88.06		
29.00	91.2	15.4	88.06		
30.00	93.7	17.8	88.04		
31.00	93.1	17.2	88.03		
32.00	93.1	17.2	88.03		
33.00	94.8	19.0	88.02		
34.00	96.9	21.1	88.00		
35.00	96.2	20.3	87.99		
36.00	97.5	21.7	87.98		
37.00	95.8	20.0	87.98		
38.00	96.3	20.4	87.96		
39.00	96.4	20.6	87.95		
40.00	95.6	19.7	87.94		
***** End Flow 2	41.00	97.1	21.2	87.94	
***** Start Shutin 2	0.00	97.1	0.0	87.94	0.0000
	1.00	96.6	-0.5	87.91	70.0000
	2.00	190.9	93.8	87.91	35.5000
	3.00	338.5	241.4	87.91	24.0000
	4.00	436.6	339.5	87.92	18.2500
	5.00	495.2	398.2	87.91	14.8000
	6.00	528.1	431.1	87.91	12.5000
	7.00	546.1	449.0	87.91	10.8571
	8.00	555.8	458.7	87.90	9.6250
	9.00	561.0	464.0	87.89	8.6667
	10.00	564.4	467.3	87.88	7.9000
	11.00	566.5	469.4	87.87	7.2727
	12.00	568.0	470.9	87.85	6.7500
	13.00	569.2	472.1	87.85	6.3077
	14.00	570.1	473.0	87.84	5.9286
	15.00	571.0	473.9	87.84	5.6000
	16.00	571.6	474.5	87.81	5.3125
	17.00	572.0	474.9	87.81	5.0588
	18.00	572.5	475.5	87.81	4.8333
	19.00	573.0	475.9	87.79	4.6316

ALPINE SUBSURFACE ELECTRONICS PROBE INCREMENTS LISTING

TEST: 8877 DST#1 #3 KANSAS CITY LIFE R.C. TAYLOR

DATE: 11/09/96

TIME: 02:33:36

Time	Pressure PSig	delta P PSig	Temp. DEG F	(T+dT)/dT	P ² /10 ⁶
20.00	573.3	476.2	87.79	4.4500	0.329
21.00	573.6	476.5	87.79	4.2857	0.329
22.00	574.0	476.9	87.78	4.1364	0.329
23.00	574.3	477.2	87.76	4.0000	0.330
24.00	574.7	477.6	87.77	3.8750	0.330
25.00	574.9	477.8	87.75	3.7600	0.331
26.00	575.1	478.1	87.75	3.6538	0.331
27.00	575.3	478.2	87.74	3.5556	0.331
28.00	575.6	478.5	87.74	3.4643	0.331
29.00	575.9	478.8	87.74	3.3793	0.332
30.00	576.0	478.9	87.75	3.3000	0.332
31.00	576.1	479.0	87.75	3.2258	0.332
32.00	576.3	479.2	87.75	3.1562	0.332
33.00	576.5	479.4	87.74	3.0909	0.332
34.00	576.6	479.5	87.75	3.0294	0.332
35.00	576.8	479.7	87.74	2.9714	0.333
36.00	576.8	479.7	87.73	2.9167	0.333
37.00	577.0	479.9	87.73	2.8649	0.333
38.00	577.1	480.0	87.73	2.8158	0.333
39.00	577.2	480.1	87.72	2.7692	0.333
40.00	577.4	480.3	87.72	2.7250	0.333
41.00	577.4	480.3	87.72	2.6829	0.333
42.00	577.6	480.5	87.72	2.6429	0.334
43.00	577.7	480.6	87.71	2.6047	0.334
44.00	577.7	480.6	87.71	2.5682	0.334
45.00	577.8	480.7	87.70	2.5333	0.334
46.00	577.8	480.7	87.70	2.5000	0.334
47.00	577.9	480.8	87.70	2.4681	0.334
48.00	577.9	480.8	87.70	2.4375	0.334
49.00	578.1	481.0	87.70	2.4082	0.334
50.00	578.2	481.1	87.70	2.3800	0.334
51.00	578.2	481.1	87.69	2.3529	0.334
52.00	578.3	481.2	87.68	2.3269	0.334
53.00	578.5	481.4	87.69	2.3019	0.335
54.00	578.5	481.4	87.69	2.2778	0.335
55.00	578.4	481.3	87.69	2.2545	0.335
56.00	578.6	481.5	87.69	2.2321	0.335
57.00	578.7	481.6	87.70	2.2105	0.335
58.00	578.7	481.6	87.70	2.1897	0.335
59.00	578.8	481.7	87.70	2.1695	0.335
60.00	578.9	481.8	87.70	2.1500	0.335
61.00	579.0	481.9	87.71	2.1311	0.335
62.00	579.1	482.0	87.70	2.1129	0.335
63.00	579.1	482.0	87.71	2.0952	0.335
64.00	579.0	481.9	87.70	2.0781	0.335
65.00	579.2	482.1	87.71	2.0615	0.335
66.00	579.3	482.2	87.69	2.0455	0.336
67.00	579.4	482.3	87.70	2.0299	0.336
68.00	578.6	481.5	87.70	2.0147	0.335
69.00	578.9	481.8	87.70	2.0000	0.335
70.00	579.3	482.2	87.69	1.9857	0.336

 ALPINE SUBSURFACE ELECTRONICS PROBE INCREMENTS LISTING

TEST: 8877 DST#1 #3 KANSAS CITY LIFE R.C. TAYLOR

DATE: 11/09/96

TIME: 02:33:36

	Time	Pressure PSig	delta P PSig	Temp. DEG F	(T+dT)/dT	P^2/10^6
	71.00	579.3	482.2	87.70	1.9718	0.336
	72.00	579.4	482.3	87.70	1.9583	0.336
	73.00	579.6	482.5	87.70	1.9452	0.336
	74.00	579.6	482.5	87.69	1.9324	0.336
	75.00	579.5	482.4	87.69	1.9200	0.336
	76.00	579.7	482.6	87.70	1.9079	0.336
	77.00	579.7	482.7	87.70	1.8961	0.336
	78.00	579.7	482.7	87.69	1.8846	0.336
	79.00	579.8	482.7	87.69	1.8734	0.336
	80.00	579.8	482.7	87.69	1.8625	0.336
	81.00	579.8	482.7	87.69	1.8519	0.336
	82.00	579.7	482.7	87.69	1.8415	0.336
	83.00	580.0	482.9	87.70	1.8313	0.336
	84.00	580.0	482.9	87.70	1.8214	0.336
	85.00	580.0	482.9	87.70	1.8118	0.336
	86.00	580.0	482.9	87.71	1.8023	0.336
	87.00	580.1	483.0	87.71	1.7931	0.336
	88.00	580.1	483.0	87.70	1.7841	0.336
	89.00	580.1	483.0	87.71	1.7753	0.336
	90.00	580.3	483.2	87.71	1.7667	0.337
	91.00	580.3	483.2	87.71	1.7582	0.337
	92.00	580.2	483.1	87.71	1.7500	0.337
***** End Shut-in 2	93.00	580.2	483.1	87.71	1.7419	0.337
***** Final Hydro.	336.00	1273.8	0.0	87.86		

TEST HISTORY

8877 DST#1 #3 KANSAS CITY LIFE R.C. TAYLOR

Flag Points

	t (Min.)	P (PSIg)
A:	0.00	1303.89
B:	0.00	84.76
C:	28.00	91.56
D:	60.00	580.84
E:	0.00	75.86
F:	41.00	97.10
G:	93.00	580.17
Q:	0.00	1273.85

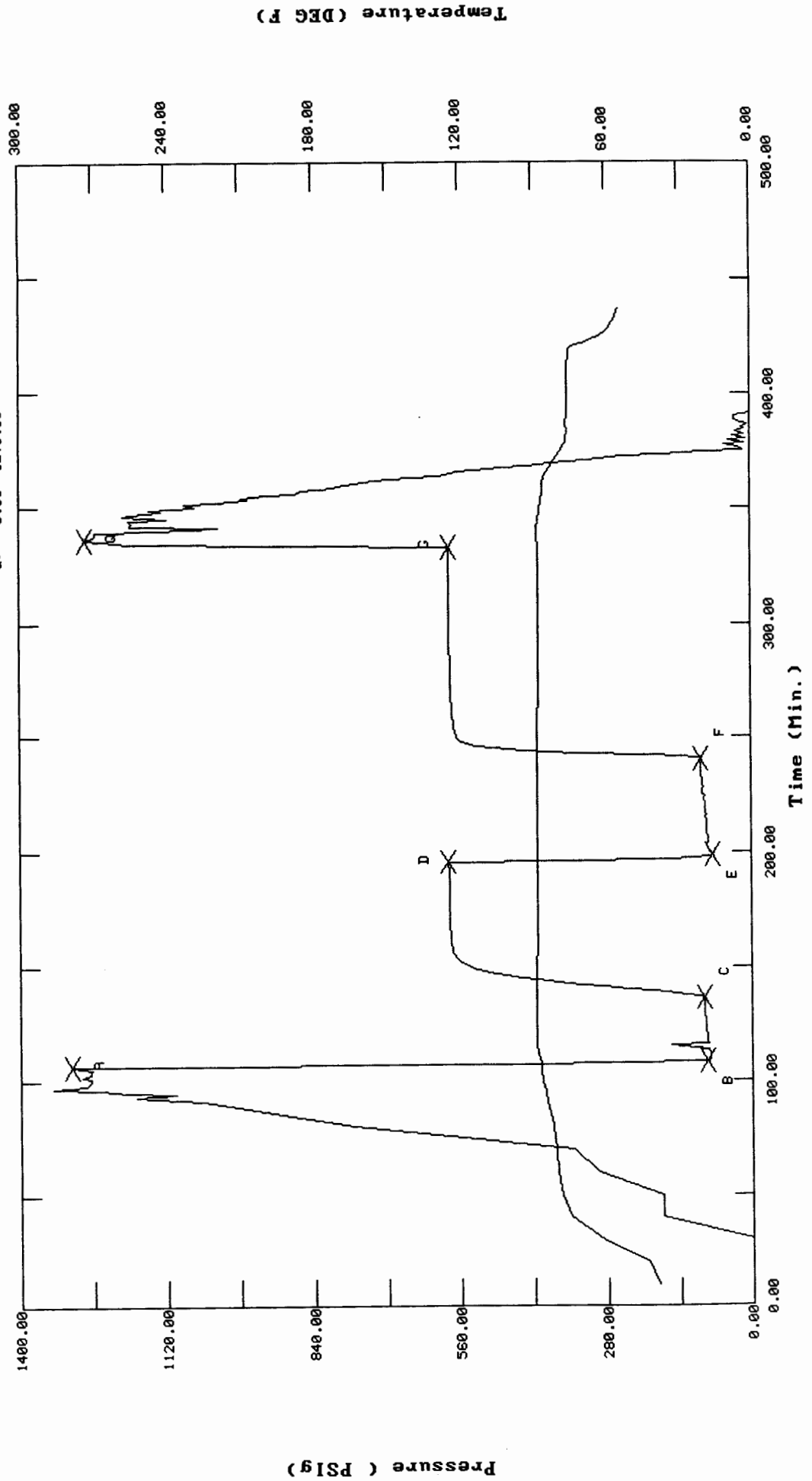
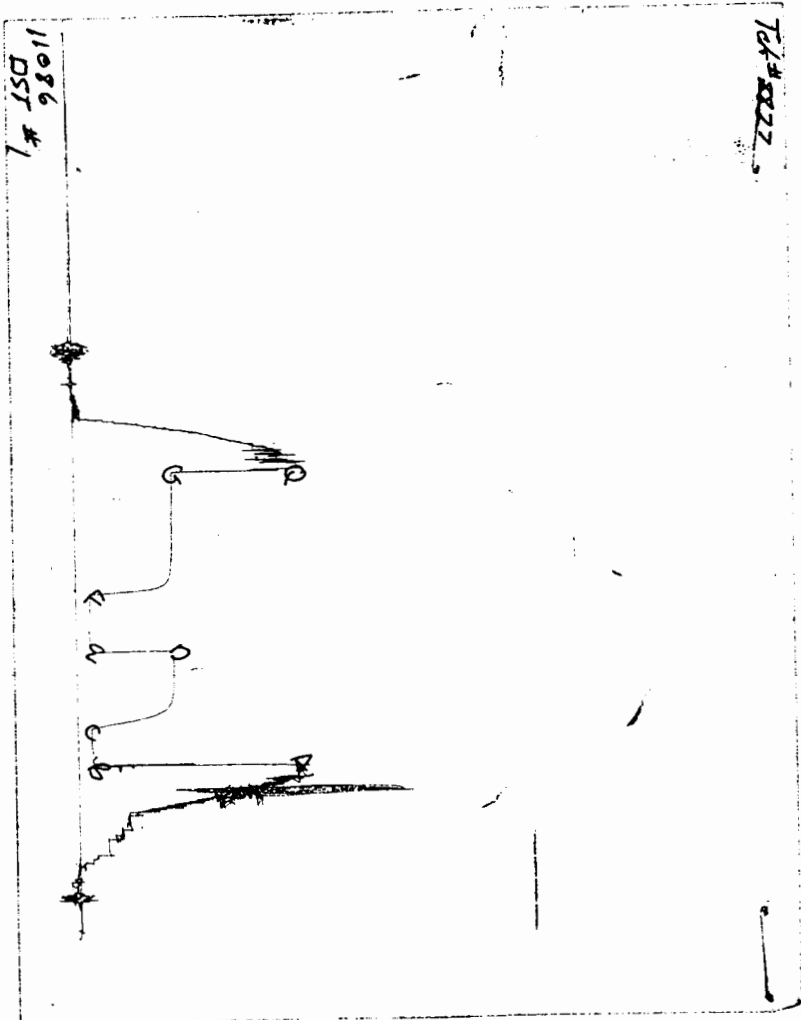


CHART PAGE



This is a photocopy of the actual AK-1 recorder chart

TRILOBITE TESTING L.L.C.

P.O. Box 362 • Hays, Kansas 67601

Test Ticket

№ 8877

Well Name & No. Kansas City Life #3 Test No. #1 Date 11/9/96
 Company R.C. Taylor Zone Tested Chase
 Address 301 W. 1-44, Suite 590 Elevation 2669 KB 2680 GL
 Co. Rep / Geo. Gordon Keen Cont. Bredco #4 Est. Ft. of Pay 15 Por. 10 %
 Location: Sec. 3 Twp. 35S Rge. 31 W Co. Seward State Ks.
 No. of Copies 5 Distribution Sheet (Y, N) N Turnkey (Y, N) N Evaluation (Y, N) N

Interval Tested 2700'-2717' Initial Str Wt./Lbs. 76000 Unseated Str Wt./Lbs. 77000
 Anchor Length 17' Wt. Set Lbs. 20000 Wt. Pulled Loose/Lbs. 96000
 Top Packer Depth 2695' Hole Size — 7 7/8" Rubber Size — 6 3/4"
 Bottom Packer Depth 2700' Wt. Pipe I.D. — 2.7 Ft. Run N/A
 Total Depth 2717' Drill Collar — 2.25 Ft. Run 621'
 Mud Wt. 8.8 LCM #4 Vis. 39 WL 8.8 Drill Pipe Size 4 1/2 XH Ft. Run 2078
 Blow Description IF: Strong Blow Bottom of bucket in 12 mins

FF: Strong blow. Bottom of bucket in 1 min.
Gas to surface in 14 min. T.S.T.M

Recovery — Total Feet	Ft. in DC	Ft. in WP	Ft. in DP
Rec. <u>140'</u> Feet Of	<u>140</u>	<u>20</u> %gas	<u>80</u> %water
Rec. _____ Feet Of		%gas	%oil
Rec. _____ Feet Of		%gas	%oil
Rec. _____ Feet Of		%gas	%oil
Rec. _____ Feet Of		%gas	%oil

BHT 88°F °F Gravity _____ °API D@ _____ °F Corrected Gravity _____ °API

RW _____ @ _____ °F Chlorides _____ ppm Recovery Chlorides 26,200 ppm System

(A) Initial Hydrostatic Mud	<u>1314</u> <u>1303</u> PSI	Recorder No. <u>11086</u>	T-Started <u>0233</u>
(B) First Initial Flow Pressure	<u>87</u> <u>85</u> PSI	@ (depth) <u>2714</u>	T-Open <u>0421</u>
(C) First Final Flow Pressure	<u>98</u> <u>92</u> PSI	Recorder No. <u>2350</u>	T-Pulled <u>0806</u>
(D) Initial Shut-in Pressure	<u>546</u> <u>581</u> PSI	@ (depth) <u>2803</u>	T-Out <u>0935</u>
(E) Second Initial Flow Pressure	<u>76</u> <u>76</u> PSI	Recorder No. _____	
(F) Second Final Flow Pressure	<u>98</u> <u>97</u> PSI	@ (depth) _____	
(G) Final Shut-in Pressure	<u>535</u> <u>580</u> PSI	Initial Opening <u>30</u>	Test <input checked="" type="checkbox"/> <u>600</u>
(H) Final Hydrostatic Mud	<u>1293</u> <u>1274</u> PSI	Initial Shut-in <u>60</u>	Jars _____
	<u>AK-1</u> <u>ALPNE</u>	Final Flow <u>45</u>	Safety Joint _____
	<u>2350</u>	Final Shut-in <u>90</u>	Straddle _____

TRILOBITE TESTING L.L.C. SHALL NOT BE LIABLE FOR DAMAGE OF ANY KIND OF THE PROPERTY OR PERSONNEL OF THE ONE FOR WHOM A TEST IS MADE, OR FOR ANY LOSS SUFFERED OR SUSTAINED, DIRECTLY OR INDIRECTLY, THROUGH THE USE OF ITS EQUIPMENT, OR ITS STATEMENTS OR OPINION CONCERNING THE RESULTS OF ANY TEST. TOOLS LOST OR DAMAGED IN THE HOLE SHALL BE PAID FOR AT COST BY THE PARTY FOR WHOM THE TEST IS MADE.

Approved By Gordon Keen
 Our Representative Dennis Keen

Elect. Rec. 150
 Other _____
 TOTAL PRICE \$ 750⁰⁰

5

TRILOBITE TESTING L.L.C.

OPERATOR : R.C.TAYLOR DATE 11/10/96
 WELL NAME: KANSAS CITY KB 2669.00 ft TICKET NO: 8878 DST #2
 LOCATION : 3-35s-31w Seward KS GR 2680.00 ft FORMATION: Council Grove
 INTERVAL : 3182.00 To 3197.00 ft TD 3197.00 ft TEST TYPE: CONVENTIONAL

RECORDER DATA

Mins	Field	1	2	3	4	TIME DATA-----
PF 30 Rec.	11086	11086	2350			PF Fr. 1812 to 1842 hr
SI 60 Range(Psi)	4350.0	4350.0	4995.0	0.0	0.0	IS Fr. 1842 to 1942 hr
SF 45 Clock(hrs)	12hr.	12	elec.			SF Fr. 1942 to 2027 hr
FS 90 Depth(ft)	3194.0	3194.0	3185.0	0.0	0.0	FS Fr. 2027 to 2157 hr

	Field	1	2	3	4	
A. Init Hydro	1622.0	1631.0	1628.0	0.0	0.0	T STARTED 1627 hr
B. First Flow	21.0	20.0	27.0	0.0	0.0	T ON BOTM 1810 hr
B1. Final Flow	46.0	38.0	48.0	0.0	0.0	T OPEN 1812 hr
C. In Shut-in	807.0	781.0	809.0	0.0	0.0	T PULLED 2157 hr
D. Init Flow	52.0	55.0	64.0	0.0	0.0	T OUT 0015 hr
E. Final Flow	87.0	68.0	86.0	0.0	0.0	
F. Fl Shut-in	803.0	761.0	796.0	0.0	0.0	TOOL DATA-----
G. Final Hydro	1452.0	1498.0	1448.0	0.0	0.0	Tool Wt. 2100.00 lbs
Inside/Outside	O	O	I			Wt Set On Packer 20000.00 lbs
						Wt Pulled Loose 76000.00 lbs
						Initial Str Wt 68000.00 lbs
						Unseated Str Wt 68000.00 lbs
						Bot Choke 0.75 in
						Hole Size 7.88 in
						D Col. ID 2.25 in
						D. Pipe ID 3.80 in
						D.C. Length 397.00 ft
						D.P. Length 2822.00 ft
						H.W. I.D 2.70 in

RECOVERY

Tot Fluid 150.00 ft of 150.00 ft in DC and 0.00 ft in DP
 150.00 ft of Water cut mud 40% water 60% mud
 0.00 ft of
 0.00 ft of
 0.00 ft of
 0.00 ft of
 0.00 ft of
 0.00 ft of
 0.00 ft of
 0.00 ft of

SALINITY 0.00 P.P.M. A.P.I. Gravity 0.00

BLOW DESCRIPTION

Initial Flow -
 Weak surface blow. Built to 2"

Final Flow -
 Weak surface blow. Built to 1-1/2"

SAMPLES:
 SENT TO:

MUD DATA-----
 Mud Type CHEMICAL
 Weight 9.00 lb/cf
 Vis. 40.00 S/L
 W.L. 9.80 in3
 F.C. 2.32 in
 Mud Drop
 Amt. of fill 0.00 ft
 Btm. H. Temp. 89.00 F
 Hole Condition good
 % Porosity 12.00
 Packer Size 6.75 in
 No. of Packers 2
 Cushion Amt. 0.00
 Cushion Type
 Reversed Out
 Tool Chased
 Tester Darren Amerine
 Co. Rep. Edwin Grieves
 Contr. Beredco
 Rig # 4
 Unit #
 Pump T.

Test Successful: Y

*** TOOL DIAGRAM *** CONVENTIONAL

WELL NAME: KANSAS CITY
 LOCATION : 3-35s-31w Seward KS
 TICKET No. 8878 D.S.T. No. 2 DATE 11/10/96
 TOTAL TOOL TO BOTTOM OF TOP PACKERS 30'
 INTERVAL TOOL
 BOTTOM PACKERS AND ANCHOR 25'
 TOTAL TOOL 55'
 DRILL COLLAR ANCHOR IN INTERVAL
 D.C. ANCHOR STND.Stands Single Total
 D.P. ANCHOR STND.Stands Single Total
 TOTAL ASSEMBLY
 D.C. ABOVE TOOLS.Stands4 Single Total 367'
 D.P. ABOVE TOOLS.Stands33 Single 1 Total 2791'
 TOTAL DRILL COLLARS DRILL PIPE & TOOLS .. 3213'
 TOTAL DEPTH 3197'
 TOTAL DRILL PIPE ABOVE K.B. 16'
 REMARKS:

P.O. SUB	3047
C.O. SUB 1'	3048
S.I. TOOL 5'	3053
sampler 3'	3056
HMV 5'	3161
JARS 4'	3166
SAFETY JOINT	3170
PACKER 5'	3172
PACKER 5'	3177
DEPTH STUBB ANCHOR	
	3182
T.C. DEPTH 3182 n/a	
n/a	
10'perfs Alpine rec.	3192 3195
AK-1 REC	3194
BULLNOSE 5' bullnose T.D.	3197

ALPINE SUBSURFACE ELECTRONICS PROBE INCREMENTS LISTING

TEST: 8878 KANSAS CITY LIFE #3 DST#2 R.C.TAYLOR

DATE: 11/10/96

TIME: 16:28:01

	Time	Pressure PSIg	delta P PSIg	Temp. DEG F	(T+dT)/dT	P^2/10^6
***** Initial Hydro.	103.00	1621.6	0.0	88.97		
***** Start Flow 1	0.00	21.2	0.0	88.98		
	1.00	24.0	2.8	88.98		
	2.00	24.6	3.4	88.98		
	3.00	24.2	3.0	88.97		
	4.00	25.1	3.9	88.96		
	5.00	25.4	4.2	88.95		
	6.00	26.7	5.5	88.95		
	7.00	27.8	6.5	88.94		
	8.00	28.4	7.1	88.95		
	9.00	29.3	8.1	88.95		
	10.00	30.0	8.8	88.96		
	11.00	31.1	9.9	88.97		
	12.00	32.1	10.8	88.98		
	13.00	33.0	11.7	88.99		
	14.00	33.8	12.6	89.00		
	15.00	34.8	13.6	89.02		
	16.00	35.4	14.2	89.04		
	17.00	36.4	15.2	89.06		
	18.00	37.3	16.1	89.07		
	19.00	38.1	16.9	89.09		
	20.00	39.1	17.9	89.12		
	21.00	39.9	18.7	89.13		
	22.00	40.9	19.6	89.15		
	23.00	41.7	20.5	89.16		
	24.00	42.6	21.4	89.18		
	25.00	43.4	22.2	89.21		
	26.00	44.3	23.1	89.23		
	27.00	45.3	24.1	89.24		
	28.00	46.2	24.9	89.28		
***** End Flow 1	29.00	47.0	25.8	89.30		
***** Start Shutin 1	0.00	47.0	0.0	89.30	0.0000	0.002
	1.00	298.8	251.8	89.33	30.0000	0.089
	2.00	543.8	496.9	89.37	15.5000	0.296
	3.00	606.3	559.3	89.41	10.6667	0.368
	4.00	641.4	594.4	89.45	8.2500	0.411
	5.00	665.0	618.0	89.49	6.8000	0.442
	6.00	682.8	635.8	89.54	5.8333	0.466
	7.00	697.1	650.1	89.57	5.1429	0.486
	8.00	708.8	661.8	89.61	4.6250	0.502
	9.00	718.7	671.8	89.64	4.2222	0.517
	10.00	727.1	680.1	89.67	3.9000	0.529
	11.00	734.3	687.3	89.70	3.6364	0.539
	12.00	740.6	693.6	89.71	3.4167	0.548
	13.00	746.2	699.2	89.74	3.2308	0.557
	14.00	751.2	704.2	89.72	3.0714	0.564
	15.00	755.6	708.6	89.78	2.9333	0.571
	16.00	759.5	712.5	89.80	2.8125	0.577
	17.00	763.1	716.1	89.81	2.7059	0.582
	18.00	766.2	719.2	89.82	2.6111	0.587
	19.00	769.4	722.4	89.84	2.5263	0.592

ALPINE SUBSURFACE ELECTRONICS PROBE INCREMENTS LISTING

TEST: 8878 KANSAS CITY LIFE #3 DST#2 R.C.TAYLOR

DATE: 11/10/96 TIME: 16:28:01

	Time	Pressure PSIg	delta P PSIg	Temp. DEG F	(T+dT)/dT	P ² /10 ⁶
	20.00	772.0	725.1	89.85	2.4500	0.596
	21.00	774.6	727.6	89.87	2.3810	0.600
	22.00	776.7	729.8	89.88	2.3182	0.603
	23.00	778.8	731.9	89.89	2.2609	0.607
	24.00	780.6	733.6	89.91	2.2083	0.609
	25.00	782.5	735.5	89.92	2.1600	0.612
	26.00	784.0	737.1	89.93	2.1154	0.615
	27.00	785.7	738.7	89.95	2.0741	0.617
	28.00	787.1	740.1	89.96	2.0357	0.619
	29.00	788.2	741.3	89.95	2.0000	0.621
	30.00	789.5	742.5	89.96	1.9667	0.623
	31.00	790.7	743.7	89.97	1.9355	0.625
	32.00	791.6	744.6	89.98	1.9062	0.627
	33.00	792.7	745.7	90.00	1.8788	0.628
	34.00	793.6	746.6	90.01	1.8529	0.630
	35.00	794.5	747.5	90.01	1.8286	0.631
	36.00	795.2	748.2	90.01	1.8056	0.632
	37.00	796.1	749.1	90.03	1.7838	0.634
	38.00	796.9	749.9	90.04	1.7632	0.635
	39.00	797.5	750.5	90.05	1.7436	0.636
	40.00	798.2	751.2	90.05	1.7250	0.637
	41.00	798.8	751.8	90.05	1.7073	0.638
	42.00	799.3	752.3	90.07	1.6905	0.639
	43.00	800.0	753.0	90.07	1.6744	0.640
	44.00	800.6	753.6	90.08	1.6591	0.641
	45.00	800.9	753.9	90.09	1.6444	0.641
	46.00	801.5	754.5	90.10	1.6304	0.642
	47.00	802.0	755.0	90.10	1.6170	0.643
	48.00	802.5	755.5	90.12	1.6042	0.644
	49.00	802.9	755.9	90.12	1.5916	0.645
	50.00	803.3	756.3	90.12	1.5800	0.645
	51.00	803.6	756.6	90.12	1.5686	0.646
	52.00	804.1	757.1	90.13	1.5577	0.647
	53.00	804.4	757.4	90.15	1.5472	0.647
	54.00	804.8	757.8	90.16	1.5370	0.648
	55.00	805.1	758.1	90.17	1.5273	0.648
	56.00	805.4	758.4	90.16	1.5179	0.649
	57.00	805.8	758.8	90.17	1.5088	0.649
	58.00	806.0	759.0	90.19	1.5000	0.650
	59.00	806.4	759.4	90.18	1.4915	0.650
***** End Shut-in 1	60.00	806.6	759.6	90.20	1.4833	0.651
***** Start Flow 2	0.00	51.5	0.0	90.18		
	1.00	52.4	0.8	90.16		
	2.00	53.5	2.0	90.14		
	3.00	54.2	2.7	90.12		
	4.00	55.1	3.6	90.11		
	5.00	56.4	4.9	90.10		
	6.00	57.2	5.7	90.10		
	7.00	58.2	6.7	90.10		
	8.00	59.1	7.6	90.10		
	9.00	59.8	8.3	90.10		

ALPINE SUBSURFACE ELECTRONICS PROBE INCREMENTS LISTING

TEST: 8878 KANSAS CITY LIFE #3 DST#2 R.C.TAYLOR

DATE: 11/10/96

TIME: 16:28:01

Time	Pressure PSIg	delta P PSIg	Temp. DEG F	(T+dT)/dT	P ² /10 ⁶
10.00	60.6	9.1	90.12		
11.00	61.8	10.2	90.12		
12.00	62.4	10.9	90.14		
13.00	62.9	11.3	90.15		
14.00	63.6	12.1	90.16		
15.00	64.5	13.0	90.19		
16.00	65.4	13.8	90.20		
17.00	66.1	14.6	90.22		
18.00	66.9	15.4	90.24		
19.00	67.7	16.2	90.25		
20.00	68.6	17.0	90.28		
21.00	69.2	17.7	90.30		
22.00	70.2	18.6	90.33		
23.00	70.9	19.4	90.35		
24.00	71.7	20.2	90.38		
25.00	72.3	20.8	90.41		
26.00	73.3	21.7	90.43		
27.00	73.9	22.4	90.45		
28.00	74.8	23.2	90.48		
29.00	75.5	24.0	90.51		
30.00	76.4	24.8	90.55		
31.00	77.0	25.5	90.57		
32.00	77.6	26.1	90.60		
33.00	78.4	26.9	90.63		
34.00	79.3	27.8	90.66		
35.00	79.9	28.4	90.68		
36.00	80.8	29.3	90.72		
37.00	81.6	30.0	90.74		
38.00	82.2	30.7	90.77		
39.00	83.1	31.6	90.80		
40.00	83.7	32.1	90.83		
41.00	84.5	33.0	90.86		
42.00	85.3	33.7	90.89		
43.00	85.9	34.4	90.92		
***** End Flow 2	44.00	86.7	35.2	90.95	
***** Start Shutin 2	0.00	86.7	0.0	90.95	0.0000 0.008
	1.00	125.3	38.6	90.98	74.0000 0.016
	2.00	341.9	255.2	91.02	37.5000 0.117
	3.00	532.0	445.3	91.06	25.3333 0.283
	4.00	603.3	516.6	91.11	19.2500 0.364
	5.00	638.7	552.0	91.16	15.6000 0.408
	6.00	661.6	574.9	91.20	13.1667 0.438
	7.00	678.3	591.6	91.25	11.4286 0.460
	8.00	691.5	604.8	91.28	10.1250 0.478
	9.00	702.3	615.6	91.32	9.1111 0.493
	10.00	711.2	624.5	91.36	8.3000 0.506
	11.00	718.9	632.2	91.40	7.6364 0.517
	12.00	725.6	638.9	91.42	7.0833 0.527
	13.00	731.3	644.6	91.45	6.6154 0.535
	14.00	736.5	649.9	91.49	6.2143 0.542
	15.00	741.2	654.6	91.50	5.8667 0.549

ALPINE SUBSURFACE ELECTRONICS PROBE INCREMENTS LISTING

TEST: 8878 KANSAS CITY LIFE #3 DST#2 R.C.TAYLOR

DATE: 11/10/96

TIME: 16:28:01

Time	Pressure PSIg	delta P PSIg	Temp. DEG F	(T+dT)/dT	P ² /10 ⁶
16.00	745.2	658.5	91.44	5.5625	0.555
17.00	748.9	662.2	91.55	5.2941	0.561
18.00	752.2	665.5	91.57	5.0556	0.566
19.00	755.3	668.7	91.59	4.8421	0.571
20.00	758.1	671.4	91.61	4.6500	0.575
21.00	760.5	673.9	91.62	4.4762	0.578
22.00	762.7	676.0	91.65	4.3182	0.582
23.00	764.9	678.2	91.66	4.1739	0.585
24.00	766.9	680.2	91.67	4.0417	0.588
25.00	768.8	682.1	91.70	3.9200	0.591
26.00	770.6	683.9	91.69	3.8077	0.594
27.00	772.1	685.4	91.71	3.7037	0.596
28.00	773.6	686.9	91.72	3.6071	0.599
29.00	775.1	688.4	91.73	3.5172	0.601
30.00	776.3	689.6	91.73	3.4333	0.603
31.00	777.5	690.8	91.74	3.3548	0.605
32.00	778.8	692.1	91.75	3.2812	0.606
33.00	779.8	693.2	91.76	3.2121	0.608
34.00	780.9	694.3	91.76	3.1471	0.610
35.00	781.9	695.2	91.76	3.0857	0.611
36.00	782.6	695.9	91.77	3.0278	0.612
37.00	783.7	697.0	91.77	2.9730	0.614
38.00	784.4	697.7	91.78	2.9211	0.615
39.00	785.2	698.5	91.79	2.8718	0.617
40.00	785.9	699.2	91.79	2.8250	0.618
41.00	786.6	699.9	91.80	2.7805	0.619
42.00	787.2	700.5	91.79	2.7381	0.620
43.00	787.8	701.1	91.80	2.6977	0.621
44.00	788.6	701.9	91.80	2.6591	0.622
45.00	789.3	702.6	91.80	2.6222	0.623
46.00	789.8	703.1	91.81	2.5870	0.624
47.00	790.3	703.6	91.80	2.5532	0.625
48.00	790.8	704.1	91.81	2.5208	0.625
49.00	791.3	704.6	91.81	2.4898	0.626
50.00	791.7	705.0	91.81	2.4600	0.627
51.00	792.3	705.6	91.81	2.4314	0.628
52.00	792.8	706.1	91.82	2.4038	0.628
53.00	793.4	706.7	91.82	2.3774	0.629
54.00	793.6	706.9	91.82	2.3519	0.630
55.00	794.0	707.3	91.82	2.3273	0.630
56.00	794.5	707.8	91.82	2.3036	0.631
57.00	794.8	708.1	91.82	2.2807	0.632
58.00	795.3	708.6	91.82	2.2586	0.632
59.00	795.7	709.0	91.83	2.2373	0.633
60.00	795.9	709.2	91.83	2.2167	0.633
61.00	796.3	709.6	91.83	2.1967	0.634
62.00	796.7	710.0	91.83	2.1774	0.635
63.00	797.0	710.3	91.82	2.1587	0.635
64.00	797.2	710.5	91.83	2.1406	0.636
65.00	797.5	710.8	91.83	2.1231	0.636
66.00	797.7	711.0	91.83	2.1061	0.636

ALPINE SUBSURFACE ELECTRONICS PROBE INCREMENTS LISTING

TEST: 8878 KANSAS CITY LIFE #3 DST#2 R.C.TAYLOR

DATE: 11/10/96

TIME: 16:28:01

	Time	Pressure PSig	delta P PSig	Temp. DEG F	(T+dT)/dT	P ² /10 ⁶
	67.00	798.2	711.5	91.84	2.0896	0.637
	68.00	798.4	711.7	91.83	2.0735	0.637
	69.00	798.6	712.0	91.84	2.0580	0.638
	70.00	798.9	712.2	91.84	2.0429	0.638
	71.00	799.1	712.4	91.84	2.0282	0.639
	72.00	799.5	712.8	91.84	2.0139	0.639
	73.00	799.6	712.9	91.84	2.0000	0.639
	74.00	799.9	713.2	91.83	1.9865	0.640
	75.00	800.2	713.5	91.84	1.9733	0.640
	76.00	800.3	713.6	91.83	1.9605	0.641
	77.00	800.5	713.8	91.84	1.9481	0.641
	78.00	800.8	714.1	91.83	1.9359	0.641
	79.00	801.0	714.3	91.84	1.9241	0.642
	80.00	801.2	714.5	91.84	1.9125	0.642
	81.00	801.4	714.7	91.84	1.9012	0.642
	82.00	801.5	714.8	91.85	1.8902	0.642
	83.00	801.7	715.0	91.85	1.8795	0.643
	84.00	801.8	715.1	91.84	1.8690	0.643
	85.00	802.2	715.5	91.85	1.8588	0.643
	86.00	802.3	715.7	91.85	1.8488	0.644
	87.00	802.3	715.7	91.85	1.8391	0.644
	88.00	802.6	715.9	91.85	1.8295	0.644
	89.00	802.8	716.1	91.86	1.8202	0.644
***** End Shut-in 2	90.00	802.9	716.2	91.84	1.8111	0.645
***** Final Hydro.	331.00	1452.3	0.0	91.87		

TEST HISTORY

8878 KANSAS CITY LIFE #3 DST#2 R.C.TAYLOR

Flag Points

	t (Min.)	P (PSig)
A:	0.00	1621.64
B:	0.00	21.23
C:	29.00	46.99
D:	60.00	806.62
E:	0.00	51.52
F:	44.00	86.69
G:	90.00	802.93
Q:	0.00	1452.28

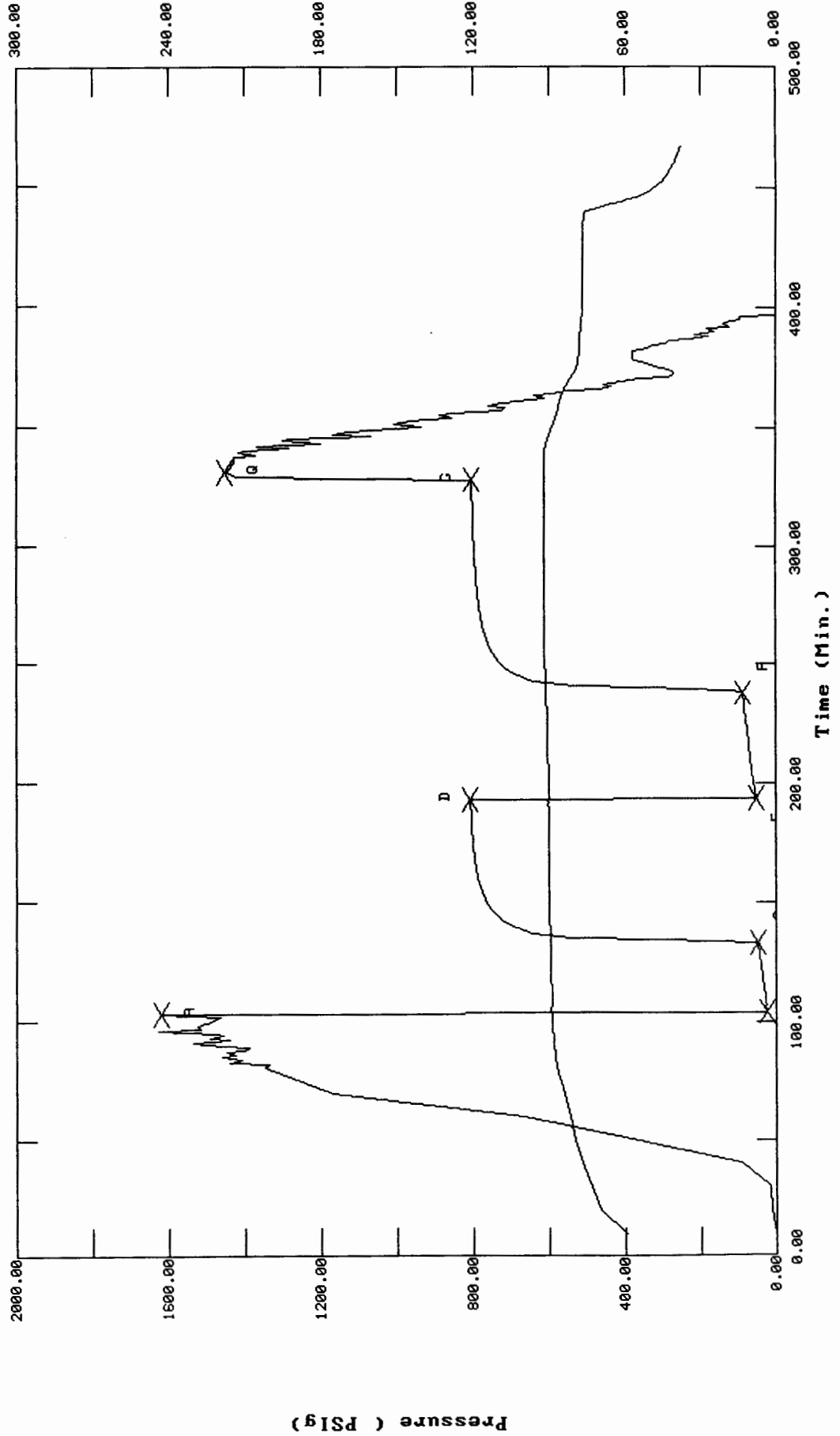
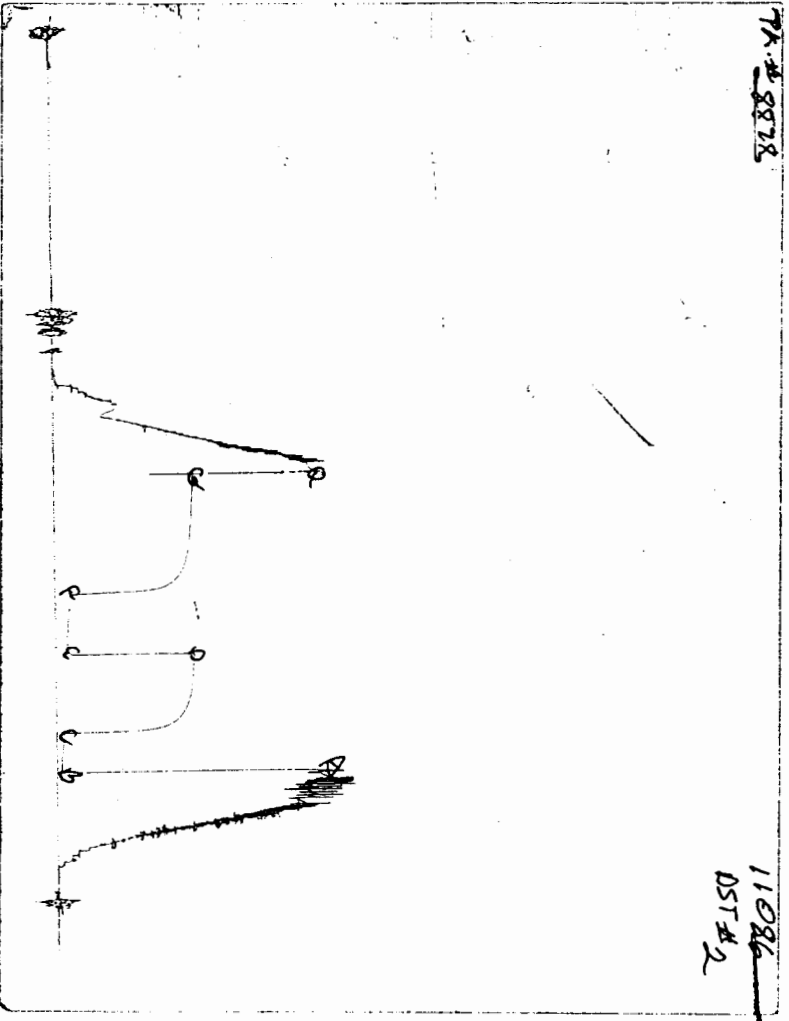


CHART PAGE



This is a photocopy of the actual AK-1 recorder chart

TRILOBITE TESTING L.L.C.

P.O. Box 362 • Hays, Kansas 67601

No 8878

Test Ticket

Well Name & No. Kansas City Life #3 Test No. 2 Date 11/10/96
Company R.C. Taylor Oklahoma City Okla. Zone Tested Council Grove
Address 301 W 1-44, Suite 590 Elevation 2669 KB 2680 GL
Co. Rep / Geo. Edwin Grieses Cont. Bredeco #4 Est. Ft. of Pay 10' Por. 12%
Location: Sec. 3 Twp. 35S Rge. 31W Co. Seward State Ks
No. of Copies 5 Distribution Sheet (Y, N) N Turnkey (Y, N) N Evaluation (Y, N) N

Interval Tested ~~3182~~ 3182-3197 Initial Str Wt./Lbs. 68,000 Unseated Str Wt./Lbs. 68,000
Anchor Length 15 Wt. Set Lbs. 20,000 Wt. Pulled Loose/Lbs. 76,000
Top Packer Depth 3181 Hole Size — 7 7/8" Rubber Size — 6 3/4"
Bottom Packer Depth 3176 Wt. Pipe I.D. — 2.7 Ft. Run N/A
Total Depth 3197 Drill Collar — 2.25 Ft. Run 397'
Mud Wt. 9.0 LCM 3" Vis. 40 WL 98 Drill Pipe Size 4 1/2 XH Ft. Run 2822
Blow Description IF: Weak surface blow. Built to 2" in H2O.
FF: Weak surface blow. Built to 1 1/2" in H2O

Recovery — Total Feet	Ft. in DC	Ft. in WP	Ft. in DP	%gas	%oil	%water	%mud
Rec. <u>150'</u>	Feet Of <u>WM</u>	—	—	—	—	<u>40</u>	<u>60</u>
Rec. _____	Feet Of _____	_____	_____	%gas	%oil	%water	%mud
Rec. _____	Feet Of _____	_____	_____	%gas	%oil	%water	%mud
Rec. _____	Feet Of _____	_____	_____	%gas	%oil	%water	%mud
Rec. _____	Feet Of _____	_____	_____	%gas	%oil	%water	%mud

BHT 89° °F Gravity _____ °API D@ _____ °F Corrected Gravity _____ °API

RW _____ @ _____ °F Chlorides _____ ppm Recovery Chlorides 15000 ppm System

(A) Initial Hydrostatic Mud	<u>1622</u>	<u>1628</u>	PSI	Recorder No. <u>11086</u>	T-Started <u>1627</u>
(B) First Initial Flow Pressure	<u>21</u>	<u>27</u>	PSI	@ (depth) <u>3194</u>	T-Open <u>1812</u>
(C) First Final Flow Pressure	<u>46</u>	<u>48</u>	PSI	Recorder No. <u>2350</u>	T-Pulled <u>2157</u>
(D) Initial Shut-in Pressure	<u>807</u>	<u>809</u>	PSI	@ (depth) <u>3185</u>	T-Out <u>00:15</u>
(E) Second Initial Flow Pressure	<u>52</u>	<u>64</u>	PSI	Recorder No. _____	
(F) Second Final Flow Pressure	<u>87</u>	<u>86</u>	PSI	@ (depth) _____	
(G) Final Shut-in Pressure	<u>803</u>	<u>796</u>	PSI	Initial Opening <u>30</u>	Test <input checked="" type="checkbox"/> <u>600</u>
(H) Final Hydrostatic Mud	<u>1452</u>	<u>1448</u>	PSI	Initial Shut-in <u>60</u>	Jars <input checked="" type="checkbox"/> <u>200</u>
	<u>I 0</u>			Final Flow <u>45</u>	Safety Joint <input checked="" type="checkbox"/> <u>50</u>
				Final Shut-in <u>90</u>	Straddle _____
					Circ. Sub _____
					Sampler <input checked="" type="checkbox"/> <u>260</u>
					Extra Packer _____
					Elect. Rec. <input checked="" type="checkbox"/> <u>150</u>
					Other _____

TRILOBITE TESTING L.L.C. SHALL NOT BE LIABLE FOR DAMAGE OF ANY KIND OF THE PROPERTY OR PERSONNEL OF THE ONE FOR WHOM A TEST IS MADE, OR FOR ANY LOSS SUFFERED OR SUSTAINED, DIRECTLY OR INDIRECTLY, THROUGH THE USE OF ITS EQUIPMENT, OR ITS STATEMENTS OR OPINION CONCERNING THE RESULTS OF ANY TEST. TOOLS LOST OR DAMAGED IN THE HOLE SHALL BE PAID FOR AT COST BY THE PARTY FOR WHOM THE TEST IS MADE.

Approved By

Edwin Grieses

Our Representative

Darren Sommer

TOTAL PRICE \$ 1200

TRILOBITE TESTING L.L.C.

OPERATOR : RC Taylor
 WELL NAME: KC Life #3
 LOCATION : 3-35s-31w Seward KS
 INTERVAL : 4595.00 To 4610.00 ft

DATE 11-14-96
 KB 2690.00 ft
 GR 2680.00 ft
 TD 4610.00 ft

TICKET NO: 9582
 FORMATION: LANSING
 TEST TYPE: CONV.

DST #3

RECORDER DATA

Mins	Field	1	2	3	4	TIME DATA-----
PF 30 Rec.	11057	11057	2342			PF Fr. 0440 to 0510 hr
SI 60 Range(Psi)	4500.0	4500.0	4995.0	0.0	0.0	IS Fr. 0510 to 0610 hr
SF 45 Clock(hrs)	12	12	elec.			SF Fr. 0610 to 0655 hr
FS 90 Depth(ft)	4605.0	4605.0	4596.0	0.0	0.0	FS Fr. 0655 to 0825 hr

	Field	1	2	3	4	
A. Init Hydro	2400.0	2390.0	2388.0	0.0	0.0	T STARTED 0250 hr
B. First Flow	56.0	39.0	26.0	0.0	0.0	T ON BOTM 0437 hr
B1. Final Flow	44.0	28.0	30.0	0.0	0.0	T OPEN 0440 hr
C. In Shut-in	1320.0	1283.0	1318.0	0.0	0.0	T PULLED 0825 hr
D. Init Flow	67.0	41.0	33.0	0.0	0.0	T OUT 1055 hr
E. Final Flow	56.0	41.0	36.0	0.0	0.0	
F. Fl Shut-in	1309.0	1276.0	1298.0	0.0	0.0	TOOL DATA-----
G. Final Hydro	2355.0	2208.0	2186.0	0.0	0.0	Tool Wt. 4000.00 lbs
Inside/Outside	0	0	I			Wt Set On Packer 28000.00 lbs
						Wt Pulled Loose 92000.00 lbs
						Initial Str Wt 75000.00 lbs
						Unseated Str Wt 75000.00 lbs
						Bot Choke 0.75 in
						Hole Size 7.88 in
						D Col. ID 2.25 in
						D. Pipe ID 3.80 in
						D.C. Length 353.00 ft
						D.P. Length 4218.00 ft
						H.W. I.D 2.70 in

RECOVERY

Tot Fluid 20.00 ft of 20.00 ft in DC and 0.00 ft in DP
 20.00 ft of drilling mud 100% mud oil specs
 0.00 ft of
 0.00 ft of
 0.00 ft of
 0.00 ft of
 0.00 ft of
 0.00 ft of
 0.00 ft of
 0.00 ft of

SALINITY 0.00 P.P.M. A.P.I. Gravity 0.00

MUD DATA-----

Mud Type	CHEM
Weight	9.10 lb/c
Vis.	51.00 S/L
W.L.	10.00 in3
F.C.	0.00 in
Mud Drop Y	10.0 ft

BLOW DESCRIPTION

Initial Flow -
 Weak 1/4" surface blow

Initial Shut-in -
 No return

Final Flow -
 Bubble to open tool - no blow

Final Shut-in -
 No return

Amt. of fill	3.00 ft
Btm. H. Temp.	115.00 F
Hole Condition	GOOD
% Porosity	0.00
Packer Size	6.75 in
No. of Packers	2
Cushion Amt.	0.00
Cushion Type	
Reversed Out N	
Tool Chased N	
Tester	Shane McBride
Co. Rep.	Ed Grieves
Contr.	Beredco
Rig #	4
Unit #	
Pump T.	

SAMPLES:
 SENT TO:

Test Successful: Y

*** TOOL DIAGRAM *** CONV.

WELL NAME: KC Life #3

LOCATION : 3-35s-31w Seward KS

TICKET No. 9582 D.S.T. No. 3 DATE 11-14-96

TOTAL TOOL TO BOTTOM OF TOP PACKERS 30

INTERVAL TOOL

BOTTOM PACKERS AND ANCHOR 15

TOTAL TOOL 45

DRILL COLLAR ANCHOR IN INTERVAL

D.C. ANCHOR STND.Stands Single Total

D.P. ANCHOR STND.Stands Single Total

TOTAL ASSEMBLY 45

D.C. ABOVE TOOLS.Stands4 Single Total 353

D.P. ABOVE TOOLS.Stands46 Single 1 Total 4218

TOTAL DRILL COLLARS DRILL PIPE & TOOLS .. 4616

TOTAL DEPTH 4610

TOTAL DRILL PIPE ABOVE K.B. 6

REMARKS:

OIL; specs

GAS;

MUD; 4,000 ml

WATER;

PRESSURE; 20#

TOTAL; 4,000 ml

Chlorides in sampler 4150 RW 1.78 @ 60°F

P.O. SUB	
C.O. SUB 1'	4565
S.I. TOOL 5'	4571
sampler 3'	4574
HMV 5'	4579
JARS 5'	4584
SAFETY JOINT 2'	4586
PACKER top	4590
PACKER bottom	4595
DEPTH 4595	
STUBB 1'	4596
ANCHOR alpine recorder	4596
9' perf	4605
T.C.	
DEPTH	
ak-1 recorder	4605
BULLNOSE 5' bullplug	4610
T.D.	4610

ALPINE SUBSURFACE ELECTRONICS PROBE INCREMENTS LISTING

TEST: 9582 DST #3 KC Life #3 RC Taylor

DATE: 11/14/96

TIME: 03:51:41

	Time	Pressure PSIg	delta P PSIg	Temp. DEG F	(T+dT)/dT	P ² /10 ⁶
***** Initial Hydro.	117.00	2388.7	0.0	108.87		
***** Start Flow 1	0.00	26.8	0.0	109.31		
	1.00	28.4	1.6	109.51		
	2.00	33.5	6.6	109.68		
	3.00	25.2	-1.7	109.81		
	4.00	24.7	-2.2	109.92		
	5.00	24.8	-2.0	110.00		
	6.00	25.6	-1.3	110.06		
	7.00	25.2	-1.7	110.12		
	8.00	25.7	-1.2	110.16		
	9.00	25.6	-1.3	110.19		
	10.00	26.0	-0.8	110.23		
	11.00	26.4	-0.4	110.25		
	12.00	26.7	-0.2	110.26		
	13.00	26.8	-0.1	110.29		
	14.00	26.9	0.1	110.30		
	15.00	27.1	0.3	110.32		
	16.00	27.3	0.4	110.34		
	17.00	27.8	0.9	110.37		
	18.00	28.0	1.2	110.39		
	19.00	28.0	1.2	110.41		
	20.00	28.3	1.4	110.44		
	21.00	28.5	1.7	110.47		
	22.00	28.7	1.8	110.50		
	23.00	28.9	2.1	110.53		
	24.00	29.3	2.4	110.56		
	25.00	29.5	2.6	110.58		
	26.00	30.0	3.1	110.60		
	27.00	30.6	3.8	110.64		
	28.00	30.6	3.8	110.67		
	29.00	31.0	4.1	110.70		
***** End Flow 1	30.00	30.9	4.0	110.74		
***** Start Shutin 1	0.00	30.9	0.0	110.74	0.0000	0.001
	1.00	37.0	6.1	110.76	31.0000	0.001
	2.00	41.5	10.7	110.79	16.0000	0.002
	3.00	51.4	20.5	110.82	11.0000	0.003
	4.00	64.6	33.7	110.85	8.5000	0.004
	5.00	101.1	70.2	110.88	7.0000	0.010
	6.00	152.3	121.4	110.91	6.0000	0.023
	7.00	328.8	297.9	110.95	5.2857	0.108
	8.00	542.2	511.3	111.00	4.7500	0.294
	9.00	695.7	664.8	111.05	4.3333	0.484
	10.00	773.4	742.5	111.10	4.0000	0.598
	11.00	820.4	789.5	111.17	3.7273	0.673
	12.00	860.4	829.5	111.22	3.5000	0.740
	13.00	896.6	865.7	111.27	3.3077	0.804
	14.00	929.5	898.6	111.31	3.1429	0.864
	15.00	959.7	928.8	111.36	3.0000	0.921
	16.00	987.7	956.8	111.41	2.8750	0.975
	17.00	1013.3	982.5	111.43	2.7647	1.027
	18.00	1037.0	1006.1	111.47	2.6667	1.075

ALPINE SUBSURFACE ELECTRONICS PROBE INCREMENTS LISTING

TEST: 9582 DST #3 KC Life #3 RC Taylor

DATE: 11/14/96 TIME: 03:51:41

Time	Pressure PSig	delta P PSig	Temp. DEG F	(T+dT)/dT	P ² /10 ⁶	
19.00	1058.9	1028.0	111.51	2.5789	1.121	
20.00	1078.9	1048.0	111.55	2.5000	1.164	
21.00	1097.2	1066.3	111.57	2.4286	1.204	
22.00	1114.0	1083.2	111.61	2.3636	1.241	
23.00	1129.3	1098.4	111.64	2.3043	1.275	
24.00	1143.4	1112.5	111.67	2.2500	1.307	
25.00	1156.2	1125.3	111.69	2.2000	1.337	
26.00	1168.1	1137.2	111.71	2.1538	1.364	
27.00	1178.9	1148.0	111.75	2.1111	1.390	
28.00	1189.0	1158.1	111.77	2.0714	1.414	
29.00	1198.1	1167.2	111.79	2.0345	1.435	
30.00	1206.7	1175.8	111.82	2.0000	1.456	
31.00	1214.5	1183.6	111.84	1.9677	1.475	
32.00	1222.0	1191.1	111.87	1.9375	1.493	
33.00	1228.8	1197.9	111.89	1.9091	1.510	
34.00	1235.2	1204.3	111.92	1.8824	1.526	
35.00	1241.1	1210.2	111.94	1.8571	1.540	
36.00	1246.7	1215.9	111.96	1.8333	1.554	
37.00	1252.0	1221.1	111.99	1.8108	1.568	
38.00	1256.9	1226.0	112.01	1.7895	1.580	
39.00	1261.5	1230.6	112.03	1.7692	1.591	
40.00	1265.9	1235.0	112.06	1.7500	1.602	
41.00	1270.0	1239.1	112.07	1.7317	1.613	
42.00	1273.9	1243.1	112.10	1.7143	1.623	
43.00	1277.6	1246.7	112.12	1.6977	1.632	
44.00	1281.1	1250.2	112.14	1.6818	1.641	
45.00	1284.5	1253.6	112.14	1.6667	1.650	
46.00	1287.6	1256.7	112.19	1.6522	1.658	
47.00	1290.5	1259.7	112.21	1.6383	1.666	
48.00	1293.6	1262.7	112.22	1.6250	1.673	
49.00	1296.3	1265.4	112.25	1.6122	1.680	
50.00	1298.9	1268.0	112.28	1.6000	1.687	
51.00	1301.4	1270.5	112.30	1.5882	1.694	
52.00	1303.8	1272.9	112.32	1.5769	1.700	
53.00	1306.1	1275.2	112.34	1.5660	1.706	
54.00	1308.3	1277.4	112.36	1.5556	1.712	
55.00	1310.4	1279.6	112.38	1.5455	1.717	
56.00	1312.5	1281.6	112.40	1.5357	1.723	
57.00	1314.4	1283.5	112.42	1.5263	1.728	
58.00	1316.3	1285.4	112.45	1.5172	1.733	
***** End Shut-in 1	59.00	1318.1	1287.2	112.46	1.5085	1.737
***** Start Flow 2	0.00	33.6	0.0	112.43		
	1.00	34.2	0.7	112.42		
	2.00	34.7	1.2	112.40		
	3.00	34.9	1.3	112.40		
	4.00	37.3	3.8	112.39		
	5.00	35.6	2.0	112.40		
	6.00	35.7	2.2	112.40		
	7.00	35.7	2.2	112.41		
	8.00	36.2	2.7	112.42		
	9.00	36.9	3.4	112.45		

ALPINE SUBSURFACE ELECTRONICS PROBE INCREMENTS LISTING

TEST: 9582 DST #3 KC Life #3 RC Taylor

DATE: 11/14/96 TIME: 03:51:41

Time	Pressure PSIg	delta P PSIg	Temp. DEG F	(T+dT)/dT	P^2/10^6
10.00	36.8	3.3	112.49		
11.00	36.8	3.3	112.53		
12.00	36.7	3.1	112.59		
13.00	37.1	3.5	112.68		
14.00	37.1	3.5	112.76		
15.00	37.3	3.8	112.84		
16.00	37.8	4.3	112.94		
17.00	31.1	-2.4	113.03		
18.00	31.6	-1.9	113.11		
19.00	31.8	-1.8	113.19		
20.00	31.9	-1.7	113.28		
21.00	32.1	-1.5	113.36		
22.00	32.3	-1.3	113.43		
23.00	32.4	-1.2	113.51		
24.00	32.6	-0.9	113.59		
25.00	32.9	-0.7	113.65		
26.00	33.0	-0.6	113.70		
27.00	33.1	-0.5	113.75		
28.00	33.3	-0.3	113.80		
29.00	33.5	-0.1	113.85		
30.00	33.6	0.0	113.90		
31.00	33.6	0.1	113.94		
32.00	34.0	0.4	113.97		
33.00	34.1	0.5	114.00		
34.00	34.3	0.8	114.02		
35.00	34.6	1.0	114.04		
36.00	34.7	1.2	114.06		
37.00	34.9	1.3	114.09		
38.00	35.3	1.8	114.11		
39.00	35.2	1.6	114.14		
40.00	35.5	1.9	114.18		
41.00	36.2	2.6	114.21		
42.00	36.8	3.3	114.25		
43.00	36.4	2.9	114.29		
44.00	36.2	2.7	114.32		
***** End Flow 2					
***** Start Shutin 2	0.00	36.2	0.0	114.32	0.0000
	1.00	41.6	5.4	114.35	75.0000
	2.00	55.1	18.9	114.37	38.0000
	3.00	78.9	42.6	114.41	25.6667
	4.00	133.4	97.2	114.43	19.5000
	5.00	297.3	261.1	114.46	15.8000
	6.00	467.0	430.8	114.50	13.3333
	7.00	565.2	529.0	114.54	11.5714
	8.00	637.3	601.0	114.58	10.2500
	9.00	692.8	656.6	114.62	9.2222
	10.00	738.1	701.8	114.65	8.4000
	11.00	776.3	740.1	114.69	7.7273
	12.00	809.7	773.5	114.72	7.1667
	13.00	839.4	803.2	114.75	6.6923
	14.00	866.5	830.2	114.77	6.2857
	15.00	891.2	855.0	114.79	5.9333

ALPINE SUBSURFACE ELECTRONICS PROBE INCREMENTS LISTING

TEST: 9582 DST #3 KC Life #3 RC Taylor

DATE: 11/14/96 TIME: 03:51:41

Time	Pressure PSIg	delta P PSIg	Temp. DEG F	(T+dT)/dT	P ² /10 ⁶
16.00	914.3	878.1	114.81	5.6250	0.836
17.00	935.6	899.4	114.84	5.3529	0.875
18.00	955.6	919.3	114.85	5.1111	0.913
19.00	974.4	938.1	114.87	4.8947	0.949
20.00	991.9	955.6	114.88	4.7000	0.984
21.00	1008.2	972.0	114.89	4.5238	1.017
22.00	1023.6	987.3	114.92	4.3636	1.048
23.00	1037.9	1001.7	114.91	4.2174	1.077
24.00	1051.4	1015.2	114.93	4.0833	1.106
25.00	1064.1	1027.9	114.95	3.9600	1.132
26.00	1075.9	1039.6	114.96	3.8462	1.157
27.00	1086.9	1050.7	114.97	3.7407	1.181
28.00	1097.3	1061.1	114.98	3.6429	1.204
29.00	1107.2	1070.9	115.00	3.5517	1.226
30.00	1116.4	1080.2	115.00	3.4667	1.246
31.00	1124.9	1088.6	115.01	3.3871	1.265
32.00	1133.1	1096.9	115.02	3.3125	1.284
33.00	1140.7	1104.4	115.04	3.2424	1.301
34.00	1147.9	1111.6	115.05	3.1765	1.318
35.00	1154.6	1118.3	115.06	3.1143	1.333
36.00	1161.0	1124.8	115.08	3.0556	1.348
37.00	1167.1	1130.8	115.08	3.0000	1.362
38.00	1172.7	1136.5	115.09	2.9474	1.375
39.00	1178.1	1141.8	115.10	2.8974	1.388
40.00	1183.4	1147.1	115.11	2.8500	1.400
41.00	1188.2	1151.9	115.13	2.8049	1.412
42.00	1192.9	1156.6	115.13	2.7619	1.423
43.00	1197.3	1161.1	115.14	2.7209	1.434
44.00	1201.5	1165.3	115.16	2.6818	1.444
45.00	1205.8	1169.5	115.16	2.6444	1.454
46.00	1209.6	1173.3	115.17	2.6087	1.463
47.00	1213.3	1177.0	115.19	2.5745	1.472
48.00	1216.7	1180.4	115.20	2.5417	1.480
49.00	1220.1	1183.8	115.20	2.5102	1.489
50.00	1223.3	1187.1	115.23	2.4800	1.497
51.00	1226.4	1190.2	115.23	2.4510	1.504
52.00	1229.4	1193.2	115.25	2.4231	1.512
53.00	1232.3	1196.1	115.26	2.3962	1.519
54.00	1235.2	1198.9	115.27	2.3704	1.526
55.00	1237.8	1201.5	115.28	2.3455	1.532
56.00	1240.3	1204.0	115.29	2.3214	1.538
57.00	1242.8	1206.5	115.30	2.2982	1.545
58.00	1245.1	1208.9	115.31	2.2759	1.550
59.00	1247.6	1211.3	115.32	2.2542	1.556
60.00	1249.8	1213.6	115.34	2.2333	1.562
61.00	1251.9	1215.6	115.35	2.2131	1.567
62.00	1254.0	1217.8	115.36	2.1935	1.573
63.00	1256.1	1219.8	115.37	2.1746	1.578
64.00	1258.0	1221.7	115.38	2.1562	1.583
65.00	1259.9	1223.7	115.40	2.1385	1.587
66.00	1261.8	1225.6	115.39	2.1212	1.592

ALPINE SUBSURFACE ELECTRONICS PROBE INCREMENTS LISTING

TEST: 9582 DST #3 KC Life #3 RC Taylor

DATE: 11/14/96 TIME: 03:51:41

	Time	Pressure PSI _g	delta P PSI _g	Temp. DEG F	(T+dT)/dT	P ² /10 ⁶
	67.00	1263.6	1227.4	115.41	2.1045	1.597
	68.00	1265.3	1229.0	115.43	2.0882	1.601
	69.00	1267.0	1230.7	115.44	2.0725	1.605
	70.00	1268.6	1232.4	115.45	2.0571	1.609
	71.00	1270.3	1234.1	115.45	2.0423	1.614
	72.00	1271.8	1235.6	115.47	2.0278	1.618
	73.00	1273.3	1237.1	115.49	2.0137	1.621
	74.00	1274.9	1238.6	115.50	2.0000	1.625
	75.00	1276.3	1240.0	115.51	1.9867	1.629
	76.00	1277.8	1241.5	115.52	1.9737	1.633
	77.00	1279.1	1242.9	115.52	1.9610	1.636
	78.00	1280.3	1244.1	115.54	1.9487	1.639
	79.00	1281.7	1245.5	115.55	1.9367	1.643
	80.00	1283.0	1246.7	115.56	1.9250	1.646
	81.00	1284.3	1248.0	115.57	1.9136	1.649
	82.00	1285.5	1249.3	115.58	1.9024	1.653
	83.00	1286.6	1250.4	115.60	1.8916	1.655
	84.00	1287.8	1251.5	115.61	1.8810	1.658
	85.00	1289.0	1252.7	115.62	1.8706	1.661
	86.00	1290.0	1253.8	115.64	1.8605	1.664
	87.00	1291.1	1254.8	115.65	1.8506	1.667
	88.00	1292.2	1256.0	115.66	1.8409	1.670
	89.00	1293.2	1256.9	115.66	1.8315	1.672
	90.00	1294.2	1258.0	115.66	1.8222	1.675
	91.00	1295.2	1258.9	115.68	1.8132	1.677
	92.00	1296.3	1260.0	115.70	1.8043	1.680
	93.00	1297.1	1260.8	115.71	1.7957	1.682
***** End Shut-in 2	94.00	1298.0	1261.8	115.71	1.7872	1.685
***** Final Hydro.	351.00	2186.3	0.0	115.80		

TEST HISTORY

9582 DST #3 KC Life #3 RC Taylor

Flag Points

	t (Min.)	P (PSig)
A:	0.00	2388.75
B:	0.00	26.85
C:	30.00	30.88
D:	59.00	1318.08
E:	0.00	33.56
F:	44.00	36.25
G:	94.00	1298.02
Q:	0.00	2186.31

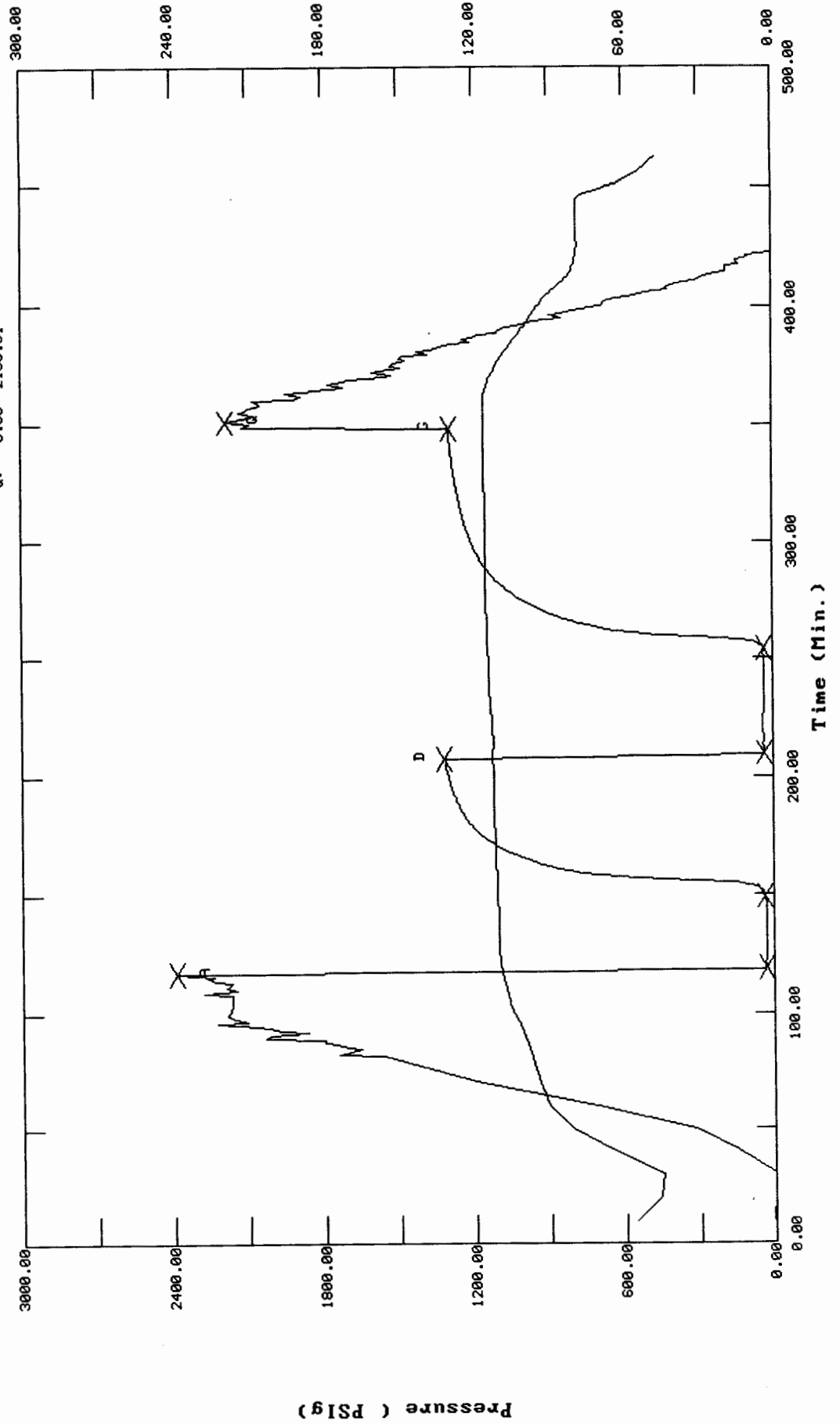
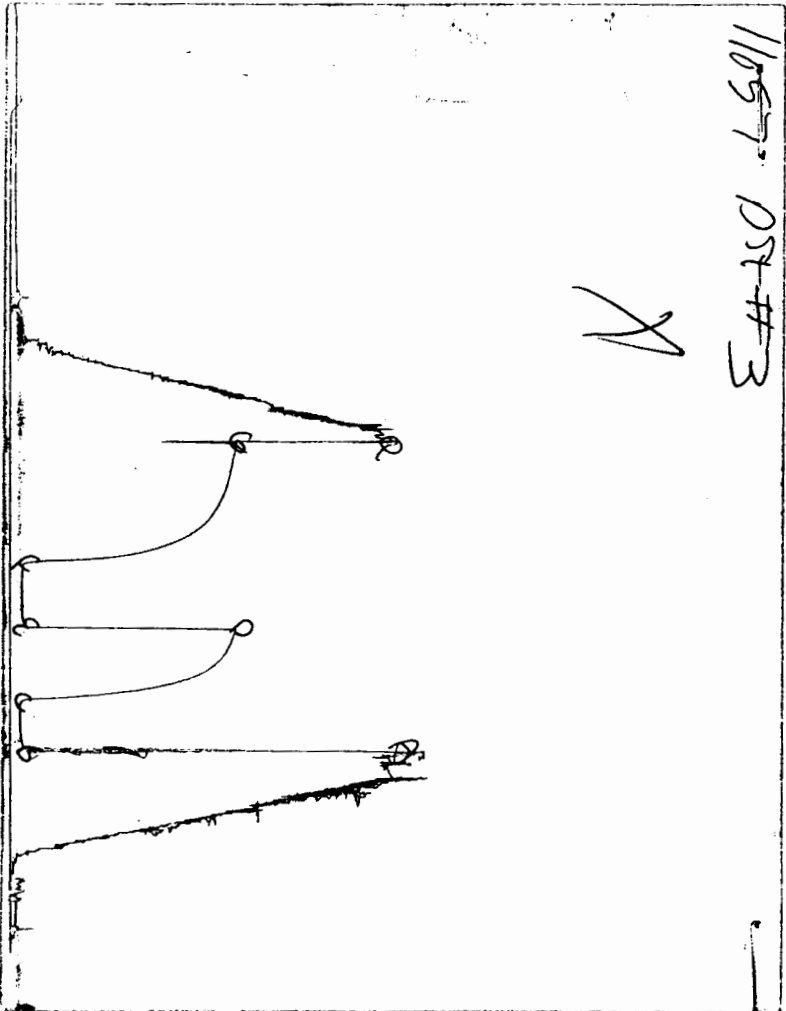


CHART PAGE

11057 DST #3

X



This is a photocopy of the actual AK-1 recorder chart

TRILOBITE TESTING L.L.C.

P.O. Box 362 • Hays, Kansas 67601

Test Ticket

No 9582

Well Name & No. <u>RC Life #3</u>		Test No. <u>3</u>	Date <u>11-14-96</u>
Company <u>RC Taylor</u>		Zone Tested <u>Leasing</u>	
Address _____		Elevation _____	KB _____ GL _____
Co. Rep / Geo. <u>Ed Gneves</u>	Cont. <u>Beredeo #4</u>	Est. Ft. of Pay _____	Por. _____ %
Location: Sec. <u>3</u>	Twp. <u>35</u>	Rge. <u>31</u>	Co. <u>Seward</u> State <u>Ks</u>
No. of Copies <u>Norm</u> Distribution Sheet (Y, N) <u>Y</u>		Turnkey (Y, N) <u>Y</u>	Evaluation (Y, N) <u>Y</u>

Interval Tested <u>4595'</u> - <u>4610'</u>	Initial Str Wt./Lbs. <u>75,000</u>	Unseated Str Wt./Lbs. <u>75,000</u>
Anchor Length _____	Wt. Set Lbs. <u>28,000</u>	Wt. Pulled Loose/Lbs. <u>92,000</u>
Top Packer Depth _____	Tool Weight <u>4,000</u>	
Bottom Packer Depth _____	Hole Size - 7 7/8" <input checked="" type="checkbox"/>	Rubber Size - 6 3/4" <input checked="" type="checkbox"/>
Total Depth <u>4610'</u>	Wt. Pipe Run _____	Drill Collar Run <u>353'</u>
Mud Wt. <u>9.1</u> LCM <u>#5</u> Vis. <u>51</u> WL <u>10.0</u>	Drill Pipe Size <u>4 1/2</u>	Ft. Run <u>4218'</u>

Blow Description Weak surface blow 1/4" in

RF: No return
FF: Bubble to open foot - No Blow
FS: No return

Recovery - Total Feet <u>20'</u>	GIP _____	Ft. in DC <u>20'</u>	Ft. in DP _____
Rec. <u>20'</u> Feet Of <u>Drily mud</u>	%gas <u>0</u>	%oil <u>0</u>	%water <u>100</u> %mud _____
Rec. _____ Feet Of _____	%gas _____	%oil _____	%water _____ %mud _____
Rec. _____ Feet Of _____	%gas _____	%oil _____	%water _____ %mud _____
Rec. _____ Feet Of _____	%gas _____	%oil _____	%water _____ %mud _____
Rec. _____ Feet Of _____	%gas _____	%oil _____	%water _____ %mud _____

BHT 115° °F Gravity _____ °API D@ _____ °F Corrected Gravity _____ °API

RW _____ @ _____ °F Chlorides _____ ppm Recovery Chlorides 400 ppm System

(A) Initial Hydrostatic Mud <u>2400</u> <u>2388</u> PSI	Recorder No. <u>2342</u>	T-Started <u>2:50 A.M.</u>
(B) First Initial Flow Pressure <u>56</u> <u>26</u> PSI	(depth) <u>4596'</u>	T-Open <u>4:40 A.M.</u>
(C) First Final Flow Pressure <u>44</u> <u>30</u> PSI	Recorder No. <u>11057</u>	T-Pulled <u>8:25 A.M.</u>
(D) Initial Shut-in Pressure <u>1320</u> <u>1318</u> PSI	(depth) <u>4605'</u>	T-Out <u>10:55 A.M.</u>
(E) Second Initial Flow Pressure <u>67</u> <u>33</u> PSI	Recorder No. _____	
(F) Second Final Flow Pressure <u>56</u> <u>36</u> PSI	(depth) _____	
(G) Final Shut-in Pressure <u>1309</u> <u>1298</u> PSI	Initial Opening <u>30</u>	Test X <u>600</u>
(H) Final Hydrostatic Mud <u>2355</u> <u>2186</u> PSI	Initial Shut-in <u>60</u>	Jars X <u>200</u>
	Final Flow <u>45</u>	Safety Joint X <u>50</u>
	Final Shut-in <u>90</u>	Straddle _____

AK-1 Elec.

TRILOBITE TESTING L.L.C. SHALL NOT BE LIABLE FOR DAMAGE OF ANY KIND OF THE PROPERTY OR PERSONNEL OF THE ONE FOR WHOM A TEST IS MADE, OR FOR ANY LOSS SUFFERED OR SUSTAINED, DIRECTLY OR INDIRECTLY, THROUGH THE USE OF ITS EQUIPMENT, OR ITS STATEMENTS OR OPINION CONCERNING THE RESULTS OF ANY TEST. TOOLS LOST OR DAMAGED IN THE HOLE SHALL BE PAID FOR AT COST BY THE PARTY FOR WHOM THE TEST IS MADE.

Approved By Ed Gneves
 Our Representative Shane M. Burt

Circ. Sub X N/C
 Sampler X 1200
 Extra Packer _____
 Elect. Rec. X 150
 Other _____
 TOTAL PRICE \$ 1200

TRILOBITE TESTING L.L.C.

P.O. Box 362 - Hays, Kansas 67601

FLUID SAMPLER DATA

Ticket No. 9582 Date 11-14-96
Company Name RC Taylor
Lease KC Life #3 Test No. #3
County _____ Sec. 3 Twp. 35 Rng. 31

SAMPLER RECOVERY

Gas _____ ML
Oil spec's _____ ML
Mud 4,000 _____ ML
Water _____ ML
Other _____ ML
Pressure 20 _____ PSI
Total 4,000 _____ ML

PIT MUD ANALYSIS

Chlorides 4,000 _____ ppm.
Resistivity _____ ohms @ _____ F
Viscosity 51 _____
Mud Weight 9.1 _____
Filtrate 10.0 _____
Other Perm #5 _____

SAMPLER ANALYSIS

Resistivity 1.78 ohms @ 60 F
Chlorides 4,150 _____ ppm.
Gravity _____ corrected @ 60 F

PIPE RECOVERY

TOP
Resistivity _____ ohms @ _____ F
Chlorides _____ ppm.

MIDDLE
Resistivity _____ ohms @ _____ F
Chlorides _____ ppm.

BOTTOM
Resistivity _____ ohms @ _____ F
Chlorides _____ ppm.

TRILOBITE TESTING L.L.C.

OPERATOR : RC Taylor DATE 11-15-96
 WELL NAME: KC Life #3 KB 2690.00 ft TICKET NO: 9583 DST #4
 LOCATION : 3-35s-31w Seward KS GR 2680.00 ft FORMATION: Drum
 INTERVAL : 4852.00 To 4890.00 ft TD 4890.00 ft TEST TYPE: CONV.

RECORDER DATA

Mins	Field	1	2	3	4	TIME DATA-----
PF 30 Rec.	11057	11057	2342			PF Fr. 0832 to 0902 hr
SI 60 Range(Psi)	4500.0	4500.0	4995.0	0.0	0.0	IS Fr. 0902 to 1002 hr
SF 60 Clock(hrs)	12	12	elec.			SF Fr. 1002 to 1102 hr
FS 120 Depth(ft)	4885.0	4885.0	4855.0	0.0	0.0	FS Fr. 1102 to 1302 hr

	Field	1	2	3	4	
A. Init Hydro	2457.0	2421.0	2377.0	0.0	0.0	T STARTED 0625 hr
B. First Flow	179.0	141.0	119.0	0.0	0.0	T ON BOTM 0829 hr
B1. Final Flow	213.0	177.0	196.0	0.0	0.0	T OPEN 0832 hr
C. In Shut-in	1522.0	1478.0	1487.0	0.0	0.0	T PULLED 1302 hr
D. Init Flow	280.0	235.0	225.0	0.0	0.0	T OUT 1615 hr
E. Final Flow	370.0	324.0	339.0	0.0	0.0	
F. Fl Shut-in	1511.0	1447.0	1477.0	0.0	0.0	TOOL DATA-----
G. Final Hydro	2434.0	2403.0	2318.0	0.0	0.0	Tool Wt. 4000.00 lbs
Inside/Outside	0	0	I			Wt Set On Packer 28000.00 lbs
						Wt Pulled Loose 93000.00 lbs
						Initial Str Wt 84000.00 lbs
						Unseated Str Wt 84000.00 lbs
						Bot Choke 0.75 in
						Hole Size 7.88 in
						D Col. ID 2.25 in
						D. Pipe ID 3.80 in
						D.C. Length 353.00 ft
						D.P. Length 4494.00 ft
						H.W. I.D 2.70 in

RECOVERY

Tot Fluid 848.00 ft of 353.00 ft in DC and 495.00 ft in DP
 228.00 ft of clean gassy oil 40% gas 60%oil
 350.00 ft of gassy oil water and mud cut 25%g 30%o 20%w
 0.00 ft of 25%
 270.00 ft of slightly gassy mud cut water - trace oil
 0.00 ft of 60% water 25% mud 5%oil 10% gas
 0.00 ft of
 0.00 ft of
 0.00 ft of RW .118 @ 64F
 SALINITY 76000.00 P.P.M. A.P.I. Gravity 36.00

BLOW DESCRIPTION

Initial Flow -
 Bottom of bucket in 1-1/2 min.
 Initial Shut-in -
 Bleed off blow 9 min. Weak surface
 return in 2 min. - built to 2"
 Final Flow -
 2" at open - bottom of bucket in
 1-1/2 min. Gas to surface in 11 min.
 Final Shut-in -
 Bleed off blow 27 min. - return in
 1 min. - built to 6"

SAMPLES:
 SENT TO:

MUD DATA-----

Mud Type	Chem
Weight	9.20 lb/cf
Vis.	48.00 S/L
W.L.	8.40 in3
F.C.	0.00 in
Mud Drop Y	25.0 ft
Amt. of fill	4.00 ft
Btm. H. Temp.	124.00 F
Hole Condition	good
% Porosity	0.00
Packer Size	6.75 in
No. of Packers	2
Cushion Amt.	0.00
Cushion Type	
Reversed Out	
Tool Chased N	
Tester	Shane McBride
Co. Rep.	Ed Grieves
Contr.	Beredco
Rig #	4
Unit #	
Pump T.	

Test Successful: Y

*** TOOL DIAGRAM *** CONV.

WELL NAME: KC Life #3
 LOCATION : 3-35s-31w Seward KS
 TICKET No. 9583 D.S.T. No. 4 DATE 11-15-96
 TOTAL TOOL TO BOTTOM OF TOP PACKERS 30
 INTERVAL TOOL
 BOTTOM PACKERS AND ANCHOR 38
 TOTAL TOOL 68
 DRILL COLLAR ANCHOR IN INTERVAL
 D.C. ANCHOR STND.Stands Single Total
 D.P. ANCHOR STND.Stands Single Total
 TOTAL ASSEMBLY 68
 D.C. ABOVE TOOLS.Stands4 Single Total 353
 D.P. ABOVE TOOLS.Stands48 Single 1 Total 4494
 TOTAL DRILL COLLARS DRILL PIPE & TOOLS .. 4915
 TOTAL DEPTH 4890
 TOTAL DRILL PIPE ABOVE K.B. 25
 REMARKS:
 Gas; 1.8 cf
 Oil; 3000
 Water; 1000
 Mud;
 Pressure; 750#
 Total; 4,000
 Chlorides in sampler 76,000 RW .118 @ 64F

P.O. SUB	
C.O. SUB 1'	4820
S.I. TOOL 5'	4826
sampler 3'	4829
HMV 5'	4834
JARS 5'	4839
SAFETY JOINT 2'	4843
PACKER top	4847
PACKER bottom	4852
DEPTH 4852	
STUBB 1'	4853
ANCHOR 2' perf	4855
alpine recorder	4855
30' perf	4885
T.C.	
DEPTH	
ak-1 recorder	4885
BULLNOSE 5' bullplug	4890
T.D.	4890

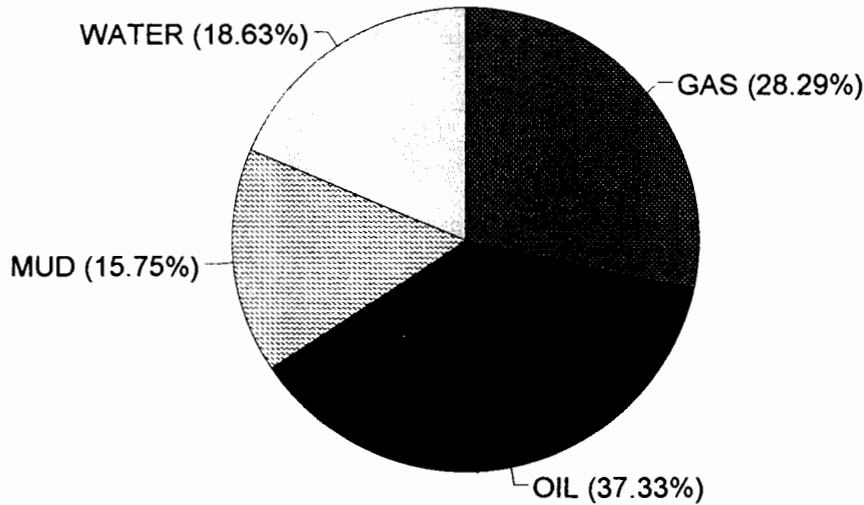
CALCULATED RECOVERY ANALYSIS

DST 2

TICKET 9740

SAMPLE #	TOTAL FEET	GAS		OIL		WATER		MUD	
		%	FEET	%	FEET	%	FEET	%	FEET
DRILL 1	228	40	91.2	60	136.8		0		0
PIPE 2	267	25	66.75	30	80.1	20	53.4	25	66.75
3			0		0		0		0
4			0		0		0		0
5			0		0		0		0
6			0		0		0		0
WEIGHT 1			0		0		0		0
PIPE 2			0		0		0		0
3			0		0		0		0
4			0		0		0		0
DRILL 1	83	25	20.75	30	24.9	20	16.6	25	20.75
COLLARS 2	270	10	27	5	13.5	60	162	25	67.5
3			0		0		0		0
4			0		0		0		0
5			0		0		0		0
TOTAL	848		205.7		255.3		232		155

		HRS OPEN		BBL/DAY
BBL OIL=	3.272094	*	1.5	= 52.353504
BBL WATER=	1.632702	*		= 26.123232
BBL MUD=	1.3807275			
BBL GAS =	2.4795465			



ALPINE SUBSURFACE ELECTRONICS PROBE INCREMENTS LISTING

TEST: 9583 DST #4 KC Life #3 RC Taylor

DATE: 11/15/96

TIME: 07:26:24

	Time	Pressure PSI _g	delta P PSI _g	Temp. DEG F	(T+dT)/dT	P ² /10 ⁶
***** Initial Hydro.	124.00	2377.3	0.0	107.31		
***** Start Flow 1	0.00	119.1	0.0	108.45		
	1.00	119.7	0.6	108.75		
	2.00	138.6	19.6	109.06		
	3.00	148.6	29.5	109.35		
	4.00	247.5	128.4	109.71		
	5.00	234.6	115.5	110.17		
	6.00	374.1	255.1	110.72		
	7.00	193.4	74.3	111.28		
	8.00	172.5	53.4	111.84		
	9.00	146.2	27.1	112.45		
	10.00	124.4	5.3	113.09		
	11.00	114.3	-4.8	113.65		
	12.00	116.4	-2.7	114.11		
	13.00	125.9	6.8	114.53		
	14.00	132.0	12.9	114.96		
	15.00	139.9	20.8	115.41		
	16.00	146.0	26.9	115.88		
	17.00	152.1	33.0	116.36		
	18.00	157.0	37.9	116.86		
	19.00	162.6	43.6	117.34		
	20.00	167.3	48.3	117.82		
	21.00	170.5	51.4	118.26		
	22.00	174.1	55.0	118.68		
	23.00	178.1	59.0	119.07		
	24.00	182.3	63.2	119.46		
	25.00	185.4	66.3	119.79		
	26.00	189.4	70.3	120.11		
	27.00	192.7	73.6	120.37		
***** End Flow 1	28.00	197.0	77.9	120.60		
***** Start Shutin 1	0.00	197.0	0.0	120.60	0.0000	0.039
	1.00	319.4	122.5	120.79	29.0000	0.102
	2.00	583.7	386.7	120.96	15.0000	0.341
	3.00	812.9	615.9	121.12	10.3333	0.661
	4.00	969.6	772.6	121.26	8.0000	0.940
	5.00	1083.3	886.4	121.36	6.6000	1.174
	6.00	1170.9	973.9	121.44	5.6667	1.371
	7.00	1236.0	1039.0	121.49	5.0000	1.528
	8.00	1283.0	1086.0	121.52	4.5000	1.646
	9.00	1316.7	1119.7	121.53	4.1111	1.734
	10.00	1341.0	1144.0	121.51	3.8000	1.798
	11.00	1359.1	1162.1	121.48	3.5455	1.847
	12.00	1373.1	1176.1	121.45	3.3333	1.885
	13.00	1384.3	1187.3	121.42	3.1538	1.916
	14.00	1393.4	1196.5	121.37	3.0000	1.942
	15.00	1401.3	1204.4	121.33	2.8667	1.964
	16.00	1407.9	1210.9	121.29	2.7500	1.982
	17.00	1413.8	1216.8	121.22	2.6471	1.999
	18.00	1419.0	1222.0	121.19	2.5556	2.013
	19.00	1423.6	1226.6	121.15	2.4737	2.027
	20.00	1427.7	1230.7	121.12	2.4000	2.038

ALPINE SUBSURFACE ELECTRONICS PROBE INCREMENTS LISTING

TEST: 9583 DST #4 KC Life #3 RC Taylor
 DATE: 11/15/96 TIME: 07:26:24

Time	Pressure PSIg	delta P PSIg	Temp. DEG F	(T+dT)/dT	P ² /10 ⁶	
21.00	1431.5	1234.5	121.11	2.3333	2.049	
22.00	1435.0	1238.0	121.08	2.2727	2.059	
23.00	1438.2	1241.2	121.07	2.2174	2.068	
24.00	1441.1	1244.1	121.06	2.1667	2.077	
25.00	1443.9	1246.9	121.05	2.1200	2.085	
26.00	1446.3	1249.3	121.04	2.0769	2.092	
27.00	1448.8	1251.8	121.03	2.0370	2.099	
28.00	1450.9	1254.0	121.03	2.0000	2.105	
29.00	1453.1	1256.1	121.02	1.9655	2.112	
30.00	1455.1	1258.2	121.00	1.9333	2.117	
31.00	1457.0	1260.0	120.98	1.9032	2.123	
32.00	1458.7	1261.8	120.97	1.8750	2.128	
33.00	1460.4	1263.4	120.96	1.8485	2.133	
34.00	1462.0	1265.0	120.94	1.8235	2.137	
35.00	1463.5	1266.6	120.94	1.8000	2.142	
36.00	1465.0	1268.1	120.92	1.7778	2.146	
37.00	1466.4	1269.4	120.91	1.7568	2.150	
38.00	1467.7	1270.8	120.89	1.7368	2.154	
39.00	1468.9	1271.9	120.88	1.7179	2.158	
40.00	1470.2	1273.3	120.86	1.7000	2.162	
41.00	1471.3	1274.4	120.84	1.6829	2.165	
42.00	1472.4	1275.5	120.82	1.6667	2.168	
43.00	1473.4	1276.5	120.81	1.6512	2.171	
44.00	1474.5	1277.5	120.79	1.6364	2.174	
45.00	1475.4	1278.5	120.78	1.6222	2.177	
46.00	1476.4	1279.5	120.76	1.6087	2.180	
47.00	1477.3	1280.3	120.74	1.5957	2.182	
48.00	1478.2	1281.2	120.72	1.5833	2.185	
49.00	1479.1	1282.1	120.72	1.5714	2.188	
50.00	1479.8	1282.8	120.68	1.5600	2.190	
51.00	1480.6	1283.7	120.67	1.5490	2.192	
52.00	1481.4	1284.4	120.65	1.5385	2.195	
53.00	1482.2	1285.2	120.63	1.5283	2.197	
54.00	1482.8	1285.9	120.61	1.5185	2.199	
55.00	1483.5	1286.5	120.60	1.5091	2.201	
56.00	1484.2	1287.2	120.58	1.5000	2.203	
57.00	1484.8	1287.9	120.55	1.4912	2.205	
58.00	1485.5	1288.5	120.53	1.4828	2.207	
59.00	1486.1	1289.1	120.52	1.4746	2.208	
60.00	1486.6	1289.6	120.50	1.4667	2.210	
***** End Shut-in 1	61.00	1487.2	1290.2	120.47	1.4590	2.212
***** Start Flow 2	0.00	225.6	0.0	120.34		
	1.00	240.4	14.8	120.14		
	2.00	233.6	8.0	119.93		
	3.00	226.6	1.0	119.81		
	4.00	224.7	-0.9	119.80		
	5.00	225.9	0.3	119.85		
	6.00	227.5	1.9	119.95		
	7.00	229.8	4.2	120.06		
	8.00	232.3	6.7	120.18		
	9.00	233.9	8.3	120.30		

ALPINE SUBSURFACE ELECTRONICS PROBE INCREMENTS LISTING

TEST: 9583 DST #4 KC Life #3 RC Taylor

DATE: 11/15/96

TIME: 07:26:24

Time	Pressure PSig	delta P PSig	Temp. DEG F	(T+dT)/dT	P ² /10 ⁶
10.00	235.2	9.7	120.41		
11.00	237.2	11.6	120.50		
12.00	237.4	11.8	120.58		
13.00	237.7	12.1	120.70		
14.00	241.2	15.6	120.81		
15.00	243.2	17.6	120.92		
16.00	246.7	21.1	121.03		
17.00	251.5	25.9	121.15		
18.00	253.2	27.6	121.27		
19.00	256.6	31.1	121.39		
20.00	258.7	33.1	121.50		
21.00	261.2	35.6	121.62		
22.00	263.7	38.1	121.72		
23.00	266.0	40.4	121.83		
24.00	268.9	43.3	121.93		
25.00	270.6	45.0	122.02		
26.00	273.3	47.7	122.10		
27.00	275.4	49.9	122.19		
28.00	276.1	50.5	122.25		
29.00	278.5	53.0	122.32		
30.00	280.8	55.2	122.40		
31.00	283.8	58.2	122.48		
32.00	285.6	60.0	122.57		
33.00	287.6	62.0	122.66		
34.00	289.4	63.8	122.74		
35.00	292.6	67.1	122.82		
36.00	294.3	68.7	122.90		
37.00	296.3	70.7	122.98		
38.00	297.9	72.3	123.05		
39.00	301.0	75.4	123.12		
40.00	303.1	77.5	123.19		
41.00	305.6	80.0	123.25		
42.00	307.2	81.6	123.31		
43.00	308.4	82.8	123.37		
44.00	310.2	84.6	123.41		
45.00	312.1	86.5	123.45		
46.00	313.6	88.0	123.50		
47.00	314.9	89.3	123.54		
48.00	317.9	92.3	123.56		
49.00	319.4	93.8	123.60		
50.00	321.9	96.3	123.64		
51.00	325.3	99.7	123.67		
52.00	326.7	101.1	123.70		
53.00	328.1	102.6	123.73		
54.00	331.6	106.0	123.76		
55.00	334.4	108.9	123.79		
56.00	336.5	111.0	123.82		
57.00	337.5	112.0	123.84		
***** End Flow 2	58.00	339.9	114.3	123.87	
***** Start Shutin 2	0.00	339.9	0.0	123.87	0.0000
	1.00	498.9	159.0	123.92	87.0000

ALPINE SUBSURFACE ELECTRONICS PROBE INCREMENTS LISTING

TEST: 9583 DST #4 KC Life #3 RC Taylor

DATE: 11/15/96 TIME: 07:26:24

Time	Pressure PSig	delta P PSig	Temp. DEG F	(T+dT)/dT	P ² /10 ⁶
2.00	707.8	367.9	123.97	44.0000	0.501
3.00	852.1	512.2	124.02	29.6667	0.726
4.00	956.1	616.2	124.07	22.5000	0.914
5.00	1036.2	696.3	124.12	18.2000	1.074
6.00	1101.9	762.0	124.16	15.3333	1.214
7.00	1156.1	816.2	124.19	13.2857	1.337
8.00	1200.2	860.3	124.21	11.7500	1.440
9.00	1235.5	895.6	124.23	10.5556	1.526
10.00	1263.7	923.8	124.25	9.6000	1.597
11.00	1286.2	946.3	124.26	8.8182	1.654
12.00	1304.3	964.4	124.21	8.1667	1.701
13.00	1319.2	979.3	124.26	7.6154	1.740
14.00	1331.3	991.4	124.25	7.1429	1.772
15.00	1341.6	1001.7	124.25	6.7333	1.800
16.00	1350.4	1010.5	124.24	6.3750	1.824
17.00	1357.9	1018.0	124.24	6.0588	1.844
18.00	1364.6	1024.7	124.21	5.7778	1.862
19.00	1370.4	1030.5	124.21	5.5263	1.878
20.00	1375.7	1035.8	124.18	5.3000	1.892
21.00	1380.4	1040.5	124.16	5.0952	1.906
22.00	1384.6	1044.7	124.14	4.9091	1.917
23.00	1388.7	1048.8	124.12	4.7391	1.928
24.00	1392.4	1052.5	124.10	4.5833	1.939
25.00	1395.4	1055.5	124.25	4.4400	1.947
26.00	1398.9	1059.0	124.04	4.3077	1.957
27.00	1401.8	1061.9	124.03	4.1852	1.965
28.00	1404.4	1064.5	124.01	4.0714	1.972
29.00	1407.0	1067.1	123.98	3.9655	1.980
30.00	1409.5	1069.6	123.97	3.8667	1.987
31.00	1411.7	1071.8	123.94	3.7742	1.993
32.00	1413.9	1074.0	123.92	3.6875	1.999
33.00	1416.0	1076.1	123.91	3.6061	2.005
34.00	1418.0	1078.1	123.88	3.5294	2.011
35.00	1419.9	1080.0	123.87	3.4571	2.016
36.00	1421.7	1081.8	123.84	3.3889	2.021
37.00	1423.4	1083.5	123.83	3.3243	2.026
38.00	1425.1	1085.2	123.82	3.2632	2.031
39.00	1426.7	1086.8	123.81	3.2051	2.035
40.00	1428.2	1088.3	123.79	3.1500	2.040
41.00	1429.6	1089.7	123.78	3.0976	2.044
42.00	1431.0	1091.1	123.77	3.0476	2.048
43.00	1432.4	1092.5	123.76	3.0000	2.052
44.00	1433.6	1093.7	123.74	2.9545	2.055
45.00	1434.9	1095.0	123.74	2.9111	2.059
46.00	1436.1	1096.2	123.72	2.8696	2.062
47.00	1437.3	1097.4	123.70	2.8298	2.066
48.00	1438.4	1098.5	123.70	2.7917	2.069
49.00	1439.5	1099.6	123.67	2.7551	2.072
50.00	1440.5	1100.6	123.67	2.7200	2.075
51.00	1441.5	1101.6	123.67	2.6863	2.078
52.00	1442.5	1102.6	123.64	2.6538	2.081

ALPINE SUBSURFACE ELECTRONICS PROBE INCREMENTS LISTING

TEST: 9583 DST #4 KC Life #3 RC Taylor

DATE: 11/15/96

TIME: 07:26:24

Time	Pressure PSig	delta P PSig	Temp. DEG F	(T+dT)/dT	P ² /10 ⁶
53.00	1443.6	1103.7	123.63	2.6226	2.084
54.00	1444.5	1104.6	123.62	2.5926	2.087
55.00	1445.4	1105.5	123.60	2.5636	2.089
56.00	1446.3	1106.4	123.58	2.5357	2.092
57.00	1447.1	1107.2	123.58	2.5088	2.094
58.00	1448.0	1108.1	123.56	2.4828	2.097
59.00	1448.8	1108.9	123.55	2.4576	2.099
60.00	1449.6	1109.7	123.55	2.4333	2.101
61.00	1450.3	1110.4	123.54	2.4098	2.104
62.00	1451.1	1111.2	123.53	2.3871	2.106
63.00	1451.9	1112.0	123.52	2.3651	2.108
64.00	1452.5	1112.6	123.52	2.3438	2.110
65.00	1453.3	1113.4	123.51	2.3231	2.112
66.00	1454.0	1114.1	123.50	2.3030	2.114
67.00	1454.6	1114.7	123.49	2.2836	2.116
68.00	1455.3	1115.4	123.50	2.2647	2.118
69.00	1455.9	1116.0	123.49	2.2464	2.120
70.00	1456.6	1116.7	123.49	2.2286	2.122
71.00	1457.1	1117.2	123.48	2.2113	2.123
72.00	1457.7	1117.8	123.49	2.1944	2.125
73.00	1458.3	1118.4	123.49	2.1781	2.127
74.00	1458.9	1119.0	123.50	2.1622	2.128
75.00	1459.4	1119.5	123.50	2.1467	2.130
76.00	1460.0	1120.1	123.50	2.1316	2.132
77.00	1460.5	1120.6	123.50	2.1169	2.133
78.00	1461.0	1121.1	123.50	2.1026	2.135
79.00	1461.5	1121.6	123.49	2.0886	2.136
80.00	1462.0	1122.1	123.50	2.0750	2.137
81.00	1462.6	1122.7	123.50	2.0617	2.139
82.00	1463.0	1123.1	123.51	2.0488	2.140
83.00	1463.4	1123.5	123.50	2.0361	2.142
84.00	1464.0	1124.1	123.51	2.0238	2.143
85.00	1464.4	1124.5	123.51	2.0118	2.145
86.00	1464.9	1125.0	123.50	2.0000	2.146
87.00	1465.3	1125.4	123.49	1.9885	2.147
88.00	1465.8	1125.9	123.48	1.9773	2.149
89.00	1466.1	1126.2	123.48	1.9663	2.150
90.00	1466.6	1126.7	123.48	1.9556	2.151
91.00	1467.0	1127.1	123.47	1.9451	2.152
92.00	1467.5	1127.6	123.47	1.9348	2.153
93.00	1467.8	1127.9	123.46	1.9247	2.154
94.00	1468.2	1128.3	123.45	1.9149	2.156
95.00	1468.6	1128.7	123.45	1.9053	2.157
96.00	1468.9	1129.0	123.44	1.8958	2.158
97.00	1469.3	1129.4	123.42	1.8866	2.159
98.00	1469.7	1129.8	123.42	1.8776	2.160
99.00	1470.1	1130.2	123.40	1.8687	2.161
100.00	1470.5	1130.6	123.38	1.8600	2.162
101.00	1470.7	1130.8	123.38	1.8515	2.163
102.00	1471.2	1131.3	123.37	1.8431	2.164
103.00	1471.5	1131.6	123.36	1.8350	2.165

 ALPINE SUBSURFACE ELECTRONICS PROBE INCREMENTS LISTING

TEST: 9583 DST #4 KC Life #3 RC Taylor

DATE: 11/15/96 TIME: 07:26:24

	Time	Pressure PSIg	delta P PSIg	Temp. DEG F	(T+dT)/dT	P ² /10 ⁶
	104.00	1471.8	1131.9	123.35	1.8269	2.166
	105.00	1472.2	1132.3	123.33	1.8190	2.167
	106.00	1472.5	1132.6	123.33	1.8113	2.168
	107.00	1472.8	1132.9	123.31	1.8037	2.169
	108.00	1473.1	1133.2	123.29	1.7963	2.170
	109.00	1473.5	1133.6	123.29	1.7890	2.171
	110.00	1473.8	1133.9	123.28	1.7818	2.172
	111.00	1474.1	1134.2	123.27	1.7748	2.173
	112.00	1474.4	1134.5	123.27	1.7679	2.174
	113.00	1474.6	1134.7	123.25	1.7611	2.174
	114.00	1475.1	1135.2	123.23	1.7544	2.176
	115.00	1475.4	1135.5	123.22	1.7478	2.177
	116.00	1475.7	1135.8	123.22	1.7414	2.178
	117.00	1475.9	1136.0	123.21	1.7350	2.178
	118.00	1476.3	1136.4	123.19	1.7288	2.179
	119.00	1476.4	1136.6	123.19	1.7227	2.180
	120.00	1476.8	1136.9	123.19	1.7167	2.181
***** End Shut-in 2	121.00	1477.0	1137.1	123.17	1.7107	2.182
***** Final Hydro.	400.00	2318.6	0.0	123.22		

TEST HISTORY

9583 DST #4 KC Life #3 RC Taylor

Flag Points

t (Min.)	P (PSig)
A: 0.00	2377.33
B: 0.00	119.08
C: 28.00	196.97
D: 61.00	1487.19
E: 0.00	225.59
F: 58.00	339.90
G: 121.00	1477.04
Q: 0.00	2318.58

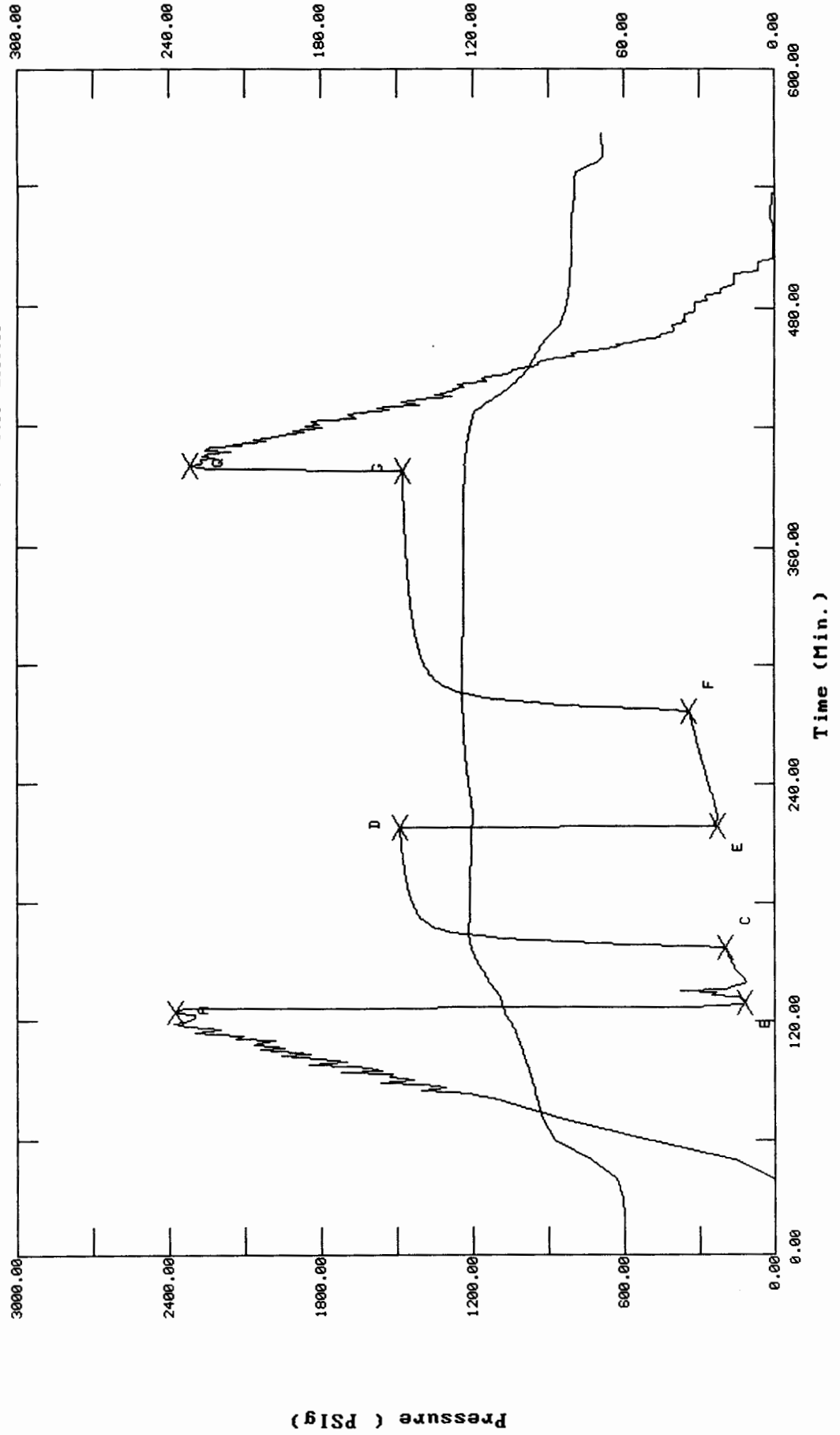
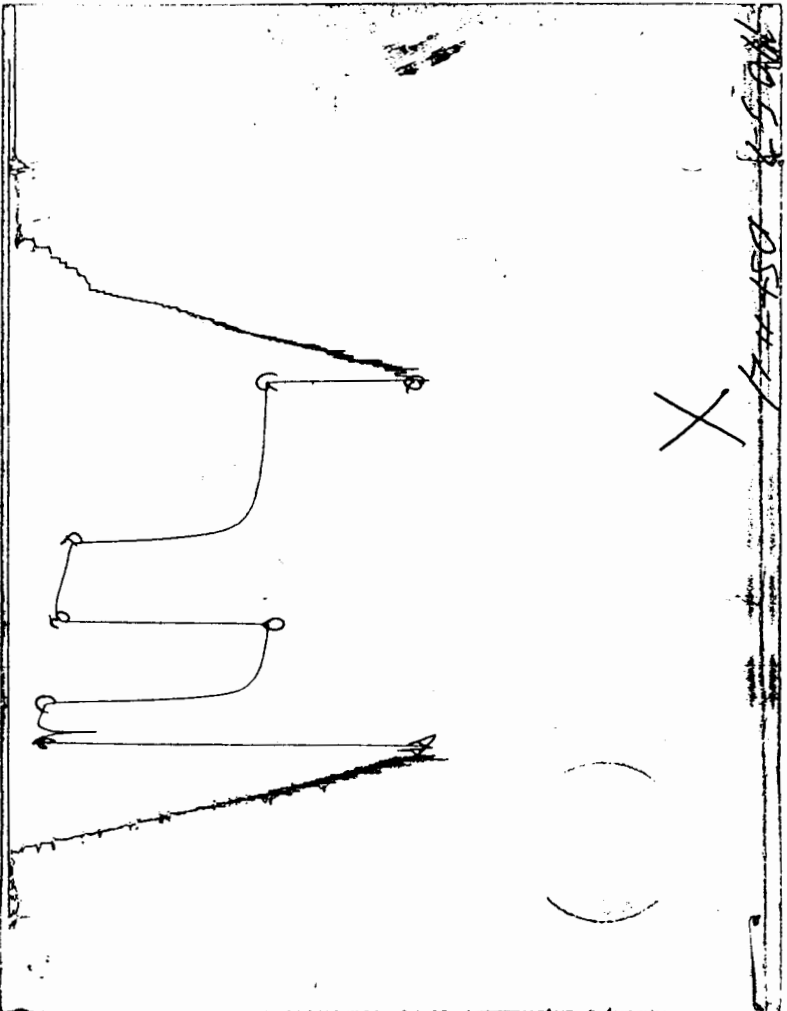


CHART PAGE



This is a photocopy of the actual AK-1 recorder chart

TRILOBITE TESTING L.L.C.

P.O. Box 362 • Hays, Kansas 67601

Test Ticket

No 9583

Well Name & No. <u>RC Life #3</u>		Test No. <u>4</u>	Date <u>11-15-96</u>
Company <u>RC Taylor</u>		Zone Tested <u>Drum</u>	
Address _____		Elevation <u>2690'</u> KB <u>2680'</u> GL	
Co. Rep / Geo. <u>Ed Greves</u>	Cont. <u>Beredco #4</u>	Est. Ft. of Pay _____	Por. _____ %
Location: Sec. <u>3</u>	Twp. <u>35s</u>	Rge. <u>31w</u>	Co. <u>Seward</u> State <u>Ks</u>
No. of Copies <u>Perm</u>	Distribution Sheet (Y, N) <u>N</u>	Turnkey (Y, N) <u>N</u>	Evaluation (Y, N) _____

Interval Tested <u>4852' - 4890'</u>	Initial Str Wt./Lbs. <u>84,000</u>	Unseated Str Wt./Lbs. <u>84,000</u>
Anchor Length _____	Wt. Set Lbs. <u>28,000</u>	Wt. Pulled Loose/Lbs. <u>93,000</u>
Top Packer Depth _____	Tool Weight <u>4,000</u>	
Bottom Packer Depth _____	Hole Size — 7 7/8" <input checked="" type="checkbox"/>	Rubber Size — 6 3/4" <input checked="" type="checkbox"/>
Total Depth _____	Wt. Pipe Run _____	Drill Collar Run <u>353'</u>
Mud Wt. <u>9.2</u> LCM <u>#3</u> Vis. <u>48</u> WL <u>8.4</u>	Drill Pipe Size <u>4 1/2 XH</u>	Ft. Run <u>4494'</u>
Blow Description <u>B.O.B in 1 1/2 min.</u>		

IST: Bleed off Blow 9 min weak surface return in 2 min. built to 2" in
 FF: 2" @ open B.O.B in 1 1/2 min G.T.S. (11 min gauging gas)
 FST: Bleed off Blow 27 min return in 1 min. built to 6" in

Recovery — Total Feet <u>248'</u>	GIP <u>G.T.S. 11 min</u>	Ft. in DC <u>353'</u>	Ft. in DP <u>195'</u>
Rec. <u>228</u> Feet Of <u>clean gassy oil</u>	<u>40% gas</u>	<u>60% oil</u>	<u>% water</u> <u>% mud</u>
Rec. <u>350</u> Feet Of <u>water mud cut gassy oil</u>	<u>25% gas</u>	<u>30% oil</u>	<u>20% water</u> <u>25% mud</u>
Rec. <u>270</u> Feet Of <u>slightly gassy mud cut oil</u>	<u>10% gas</u>	<u>5% oil</u>	<u>60% water</u> <u>25% mud</u>
Rec. _____ Feet Of _____	<u>% gas</u>	<u>% oil</u>	<u>% water</u> <u>% mud</u>
Rec. _____ Feet Of _____	<u>% gas</u>	<u>% oil</u>	<u>% water</u> <u>% mud</u>

BHT 124° °F Gravity 37 °API D@ 70 °F Corrected Gravity 36 °API
 RW .118 @ 64 °F Chlorides 76,000 ppm Recovery Chlorides 3,100 ppm System

(A) Initial Hydrostatic Mud <u>2457</u> <u>2377</u> PSI	Recorder No. <u>2342</u>	T-Started <u>06:25 AM.</u>
(B) First Initial Flow Pressure <u>179</u> <u>119</u> PSI	(depth) <u>4855</u>	T-Open <u>08:32 AM.</u>
(C) First Final Flow Pressure <u>213</u> <u>196</u> PSI	Recorder No. <u>11057</u>	T-Pulled <u>13:02 P.M.</u>
(D) Initial Shut-in Pressure <u>1522</u> <u>1487</u> PSI	(depth) <u>4885'</u>	T-Out <u>16:15 P.M.</u>
(E) Second Initial Flow Pressure <u>280</u> <u>225</u> PSI	Recorder No. _____	
(F) Second Final Flow Pressure <u>370</u> <u>339</u> PSI	(depth) _____	
(G) Final Shut-in Pressure <u>1511</u> <u>1477</u> PSI	Initial Opening <u>30</u>	Test <input checked="" type="checkbox"/> <u>600</u>
(H) Final Hydrostatic Mud <u>2434</u> <u>2318</u> PSI	Initial Shut-in <u>60</u>	Jars <input checked="" type="checkbox"/> <u>200</u>
	Final Flow <u>60</u>	Safety Joint <input checked="" type="checkbox"/> <u>50</u>
	Final Shut-in <u>120</u>	Straddle _____

TRILOBITE TESTING L.L.C. SHALL NOT BE LIABLE FOR DAMAGE OF ANY KIND OF THE PROPERTY OR PERSONNEL OF THE ONE FOR WHOM A TEST IS MADE, OR FOR ANY LOSS SUFFERED OR SUSTAINED, DIRECTLY OR INDIRECTLY, THROUGH THE USE OF ITS EQUIPMENT, OR ITS STATEMENTS OR OPINION CONCERNING THE RESULTS OF ANY TEST. TOOLS LOST OR DAMAGED IN THE HOLE SHALL BE PAID FOR AT COST BY THE PARTY FOR WHOM THE TEST IS MADE.

Approved By Ed Greves
 Our Representative Ed Greves

Extra Packer _____
 Elect. Rec. 150
 Other _____
 TOTAL PRICE \$ 1200

TRILOBITE TESTING L.L.C.

P.O. Box 362 - Hays, Kansas 67601

FLUID SAMPLER DATA

Ticket No. 9583 Date 11-15-96
Company Name RC Taylor
Lease RC life # 3 Test No. #4
County Seward, KS Sec. 3 Twp. 35 Rng. 31

SAMPLER RECOVERY

Gas 1.8 CF ML
Oil 3,000 ML
Mud _____ ML
Water 1,000 ML
Other _____ ML
Pressure 750 PSI
Total 4,000 ML

PIT MUD ANALYSIS

Chlorides 3,100 ppm.
Resistivity 2.1 ohms @ 62 F
Viscosity 48
Mud Weight 9.2
Filtrate 2.4
Other LCM # 3

SAMPLER ANALYSIS

Resistivity .118 ohms @ 64 F
Chlorides 76,000 ppm.
Gravity 36 corrected @ 60 F

PIPE RECOVERY

TOP
Resistivity .118 ohms @ 64 F
Chlorides 76,000 ppm.

MIDDLE

Resistivity _____ ohms @ _____ F
Chlorides _____ ppm.

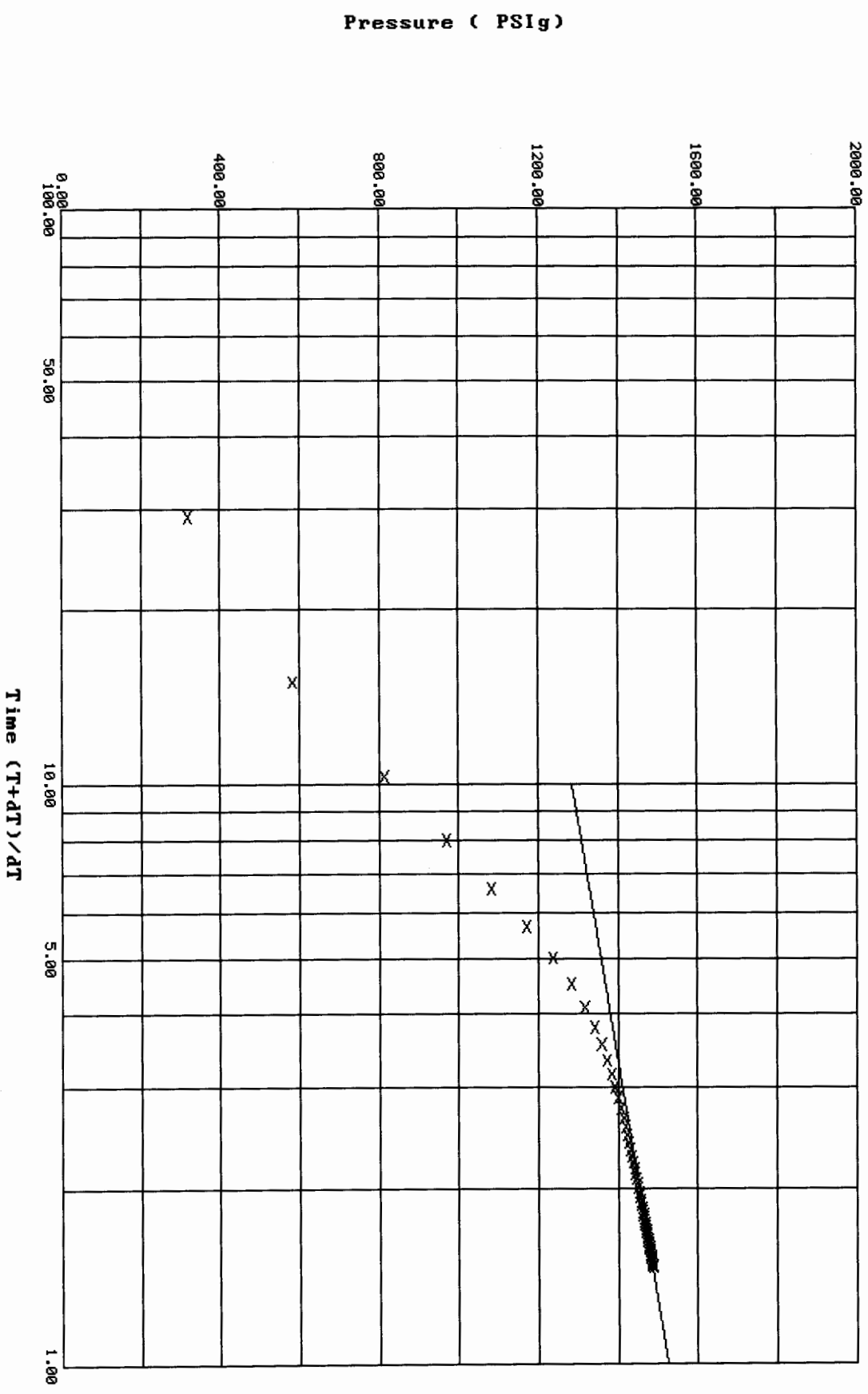
BOTTOM

Resistivity _____ ohms @ _____ F
Chlorides _____ ppm.

Horner Plot: Shut-in #1

9583 DST #4 KC Life #3 RC Taylor

Slope: 242.9219 PSig/cycle
Ext. Pressure: 1527.0404 PSig



Horner Plot: Shut-in #2

9583 DST #4 KC Life #3 RC Taylor

Slope: 183.0031 PSig/cycle
Ext. Pressure: 1519.7161 PSig

