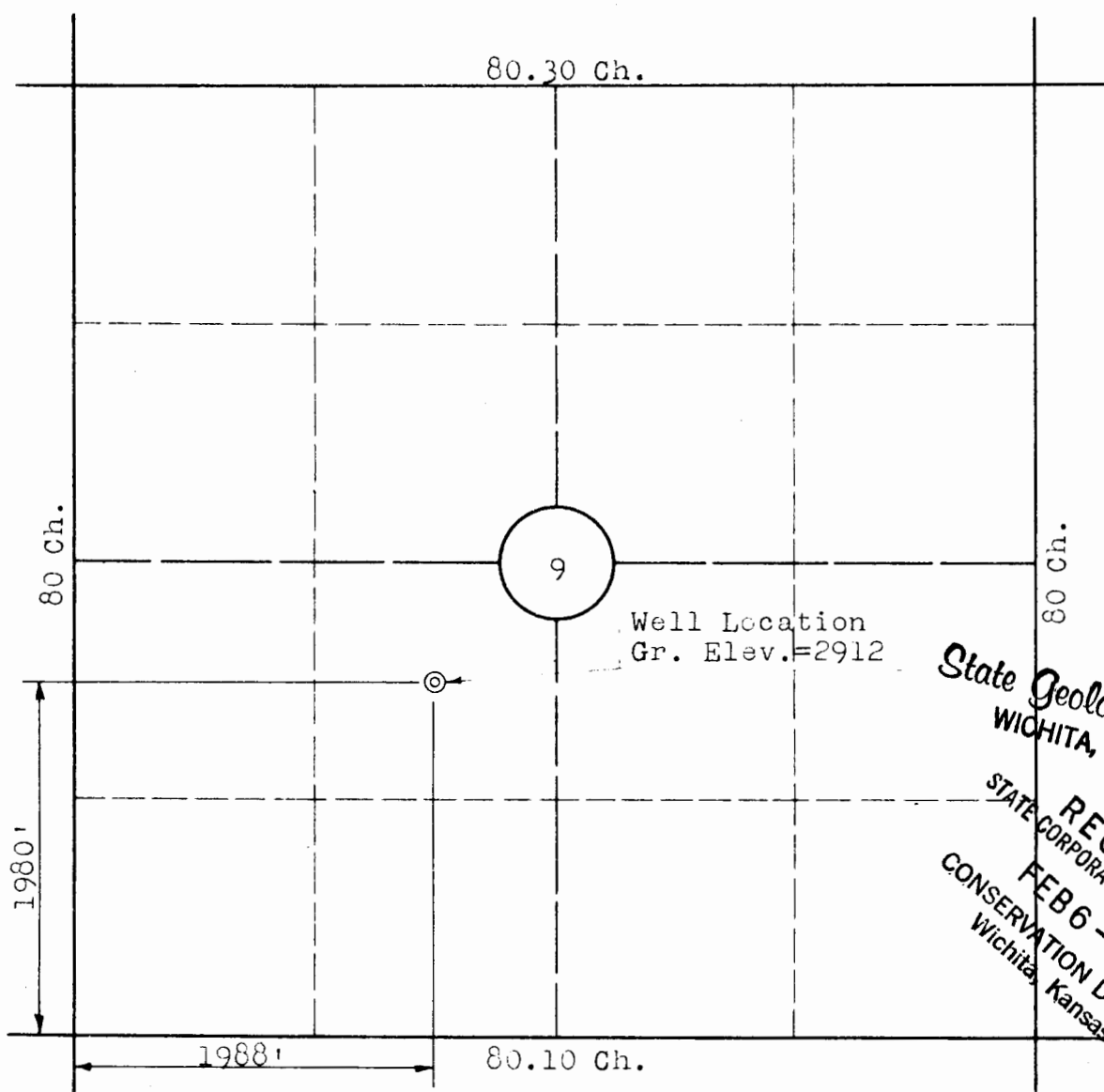


9-35-34W



State Geological Survey
WICHITA, BRANCH

RECEIVED
STATE CORPORATION COMMISSION
FEB 6 - 1968
CONSERVATION DIVISION
Wichita, Kansas

WELL DESCRIPTION

WIDE AWAKE PROSPECT: The center of the Northeast Quarter of the Southwest Quarter, Section 9, Township 35 South, Range 34 West of the 6th Principal Meridian, in Seward County, Kansas.

I, Paul E. Nixon, a Licensed Professional Engineer in the State of Kansas, do hereby certify that the survey as shown hereon was completed under my supervision on the 8th day of August, 1967, and is true and correct to the best of my knowledge.



Paul E. Nixon
Paul E. Nixon, P.E.

REV. NO.	DATE	REVISION	BY
SHENANDOAH OIL COMPANY			
c-NE-SW-Sec 9, T 35 S. R 34 W			
Seward County, Kansas			
NIXON & SEAMAN ENGINEERS BOX 81 LIBERAL, KANSAS		DATE: 8-11-67	
		DRAWN BY: Nixon	
		DRWG. NO. 67102	
		SHEET NO. 1 OF 1	