

State Geological Survey
BRANCH

15-189-20348
2-35-39W

KANSAS DRILLERS LOG

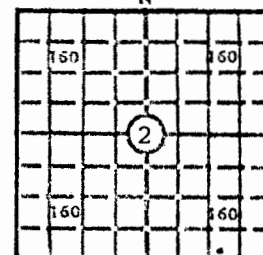
API No. 15 — 189 — 20,348
County Number

S. 2 T. 35S R. 39 W

Loc. 100' FSL & 1250' FEL

County STEVENS

640 Acres
N



Locate well correctly

Elev.: Gr. 3283.1'

DF KB

Operator		
ANADARKO PRODUCTION COMPANY		
Address		
P. O. BOX 351, LIBERAL, KANSAS 67901		
Well No.	Lease Name	
2	COX "A"	
Footage Location		
100 feet from (X) (S) line	1250 feet from (E) (W) line	
Principal Contractor	Geologist	
Gabbert-Jones		
Spud Date	Total Depth	P.B.T.D.
May 7, 1977	3065'	
Date Completed	Oil Purchaser	
June 2, 1977		

CASING RECORD

Report of all strings set — surface, intermediate, production, etc.

Purpose of string	Size hole drilled	Size casing set (in O.D.)	Weight lbs/ft.	Setting depth	Type cement	Sacks	Type and percent additives
Surface	12-1/4"	8-5/8"	20#	607'	Common	550	3% cc
Production	7-7/8"	4-1/2"	10.5#	3064'	LiteWate SS Pozmix	500 150	4% gel 5% CFR-2

LINER RECORD

PERFORATION RECORD

Top, ft.	Bottom, ft.	Sacks cement	Shots per ft.	Size & type	Depth interval
			2		2948-3020'
TUBING RECORD					
Size	Setting depth	Packer set at			
2-1/16	2984'				

ACID, FRACTURE, SHOT, CEMENT SQUEEZE RECORD

Amount and kind of material used	Depth interval treated
A/5000 gals 15% NE, F/120,000 gals wtr + 120,000# riversand	2948-3020'

INITIAL PRODUCTION

Date of first production	Producing method (flowing, pumping, gas lift, etc.)			
SI for PL CONNECTION	Flowing			
RATE OF PRODUCTION PER 24 HOURS	Oil	Gas	Water	Gas-oil ratio
	bbls.	2880 MCF	bbls.	CFPB
Disposition of gas (vented, used on lease or sold)			Producing interval(s)	
			2948-3020'	

INSTRUCTIONS: As provided in KCC Rule 82-2-125, within 90 days after completion of a well, one completed copy of this Drillers Log shall be transmitted to the State Geological Survey of Kansas, 4150 Monroe Street, Wichita, Kansas 67209. Copies of this form are available from the Conservation Division, State Corporation Commission, 3830 So. Meridian (P.O. Box 17027), Wichita, Kansas 66217. Phone AC 316-522-2206. If confidential custody is desired, please note Rule 82-2-125. Drillers Logs will be on open file in the Oil and Gas Division, State Geological Survey of Kansas, Lawrence, Kansas 66044.

Operator ANADARKO PRODUCTION COMPANY		DESIGNATE TYPE OF COMP.: OIL, GAS, DRY HOLE, SWDW, ETC.: GAS	
Well No. 2	Lease Name COX "A"		
S <u>2</u> T <u>35</u> R <u>39</u> ^{EX} _W			
WELL LOG Show all important zones of porosity and contents thereof; cored intervals, and all drill-stem tests, including depth interval tested, cushion used, time tool open, flowing and shut-in pressures, and recoveries.		SHOW GEOLOGICAL MARKERS, LOGS RUN, OR OTHER DESCRIPTIVE INFORMATION.	
FORMATION DESCRIPTION, CONTENTS, ETC.	TOP	BOTTOM	NAME
Surface Clay-Sand	0'	610'	Gamma Ray
Redbed-Sand	610'	1170'	Neutron
Sand-Redbed	1170'	1678'	
Shale-Anhydrite	1678'	1825'	
Shale-Lime	1825'	2078'	
Shale-Shale w/Lime	2078'	2304'	
Lime & Shale	2304'	3065'	
TOTAL DEPTH		3065'	
USE ADDITIONAL SHEETS, IF NECESSARY TO COMPLETE WELL RECORD.			
Date Received	Signature Paul Campbell, Division Production Manager Title November 2, 1977 Date		