

REVISED  
TWO-ZONE COMPLETION RECORD

DOCKET NO. 99,287-C  
(C-17,111)  
DATED: September 28, 1973

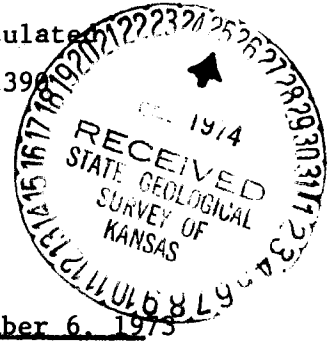
OPERATOR Cities Service Oil Company LOCATION OF WELL:  
WILBURTON MORROW "C" UNIT 2302W  
LEASE GORE D-2 660 ft. From South Line  
Well Number --- 1980 ft. From West Line  
of the SW/4 of Sec. 4 T.35S R.41W  
COUNTY Morton POOL Wilburton  
UPPER PRODUCING FORMATION Topeka TOP 3186' <sup>Greenwood</sup> BASE 3266'  
LOWER PRODUCING FORMATION Morrow "C" TOP 4906' BASE 4940'  
DATE OF COMPLETION <sup>Re-</sup> January 8, 1974

CASING RECORD

| Length | Size   | Weight | Condition        | Cement | Size Hole | Est. Height of Cement |
|--------|--------|--------|------------------|--------|-----------|-----------------------|
| 1504   | 8-5/8" | 24#    | A                | 975    | 12-1/4    | Circulated            |
| 4982   | 5-1/2" | 14#    | B-1966<br>A-3016 | 300    | 7-7/8     | 2398                  |

\* If liner, show top and bottom.

Description of Packer: Baker 5-1/2" plastic coated Lok-set packer



WHERE SET: TOP 4856'KB BOTTOM 4859.7' DATE SET December 6, 1973

PERFORATING RECORD

| Size Holes | Number of Holes | From | To   | Date     | By                                 |
|------------|-----------------|------|------|----------|------------------------------------|
| Jets       | 40              | 4906 | 4912 | 2/13/62  | McCullough                         |
| Jets       | 20              | 4917 | 4922 | 2/13/62  | McCullough                         |
| Jets       | 24              | 4932 | 4940 | 2/13/62  | McCullough                         |
| Frac Notch | --              | 3302 | --   | 2/27/62  | McCullough (squeezed off 10/24/71) |
| Jets       | 20              | 3216 | 3216 | 10/11/73 | McCullough                         |
| Jets       | 8               | 3262 | 3266 | 10/11/73 | McCullough                         |

REVISED  
ACID RECORD

| Formation        | Amount Acid          | Date     | By     |
|------------------|----------------------|----------|--------|
| Morrow (4906-12) |                      |          |        |
| (4917-22)        | 500 gals             | 10/11/73 | Dowell |
| Morrow (4932-40) | 500 gals             | 10/10/73 | Dowell |
| (4932-40)        | 500 gals             | 11/15/73 | Dowell |
| (4932-40)        | 750 gals             | 11/16/73 | Dowell |
| Morrow (4906-40) | 1000 gals (2 stages) | 11/21/73 | Dowell |
| Topeka (3216-26) | 500 gals             | 10/17/73 | Dowell |
| (3216-26)        | 6000 gals            | 10/18/73 | Dowell |
| Topeka (3262-66) | 500 gals             | 10/13/73 | Dowell |
| (3262-66)        | 4000 gals            | 10/15/73 | Dowell |
| Topeka (3216-66) | 500 gals             | 11/24/73 | Dowell |
| Topeka (3262-66) | 500 gals             | 11/25/73 | Dowell |
| Topeka (3216-26) | 500 gals             | 11/25/73 | Dowell |
| Topeka (3262-66) | 5000 gals            | 11/27/73 | Dowell |
| Topeka (3216-26) | 7000 gals            | 11/30/73 | Dowell |

014-25-4

4-35-4/w

PRODUCTIVITY RECORD

| FORMATION | INITIAL            | DATE     | CURRENT | DATE   |
|-----------|--------------------|----------|---------|--------|
| Morrow C  | (Inj) 441 Bbls Wtr | 12/14/73 | 1115 BW | 1/8/74 |
| Topeka    | CAOF 2505 MCF      | 1/8/74   | ---     | ---    |

TUBING & EQUIPMENT RECORD

| When Producing from<br><u>Above Packer Greenwood (Topeka)</u> | When Producing<br>From Below Packer | When Producing<br>From Below Packer | Injecting<br>Wilburton (Morrow) |
|---|-------------------------------------|-------------------------------------|---------------------------------|
| 100 Jts. 1½" 2.75 10rd I.J. tbg                               | 3,243.16'                           | 152 Jts. 2-1/16" 3.4# J-55          |                                 |
| 1 Seating Nipple  | .96'                                | I.J. Duo-lined tbg                  | 4,851.06'                       |
| 1 Mud Anchor  | <u>17.20'</u>                       | 1 Baker Loc-Set 5½"                 |                                 |
|   |                                     | Plastic coated packer               | 3.70'                           |
|   |                                     | 1 2-1/16" chgover cplg              | .75'                            |
|   |                                     | 1 2-1/16"-2-3/8" upset              |                                 |
|   |                                     | chgover cplg                        | <u>.42'</u>                     |
|   |                                     | TOTAL                               | 4,855.93'                       |
| Set @ 3272'KB   |                                     |                                     |                                 |
|   |                                     | Pkr. set @ 4856' K.B.               |                                 |

REMARKS:

WITNESSES:

For State Gilbert P. Leiker  
 For Operator Robert E. Huerin  
 For Offset \_\_\_\_\_

REVISED

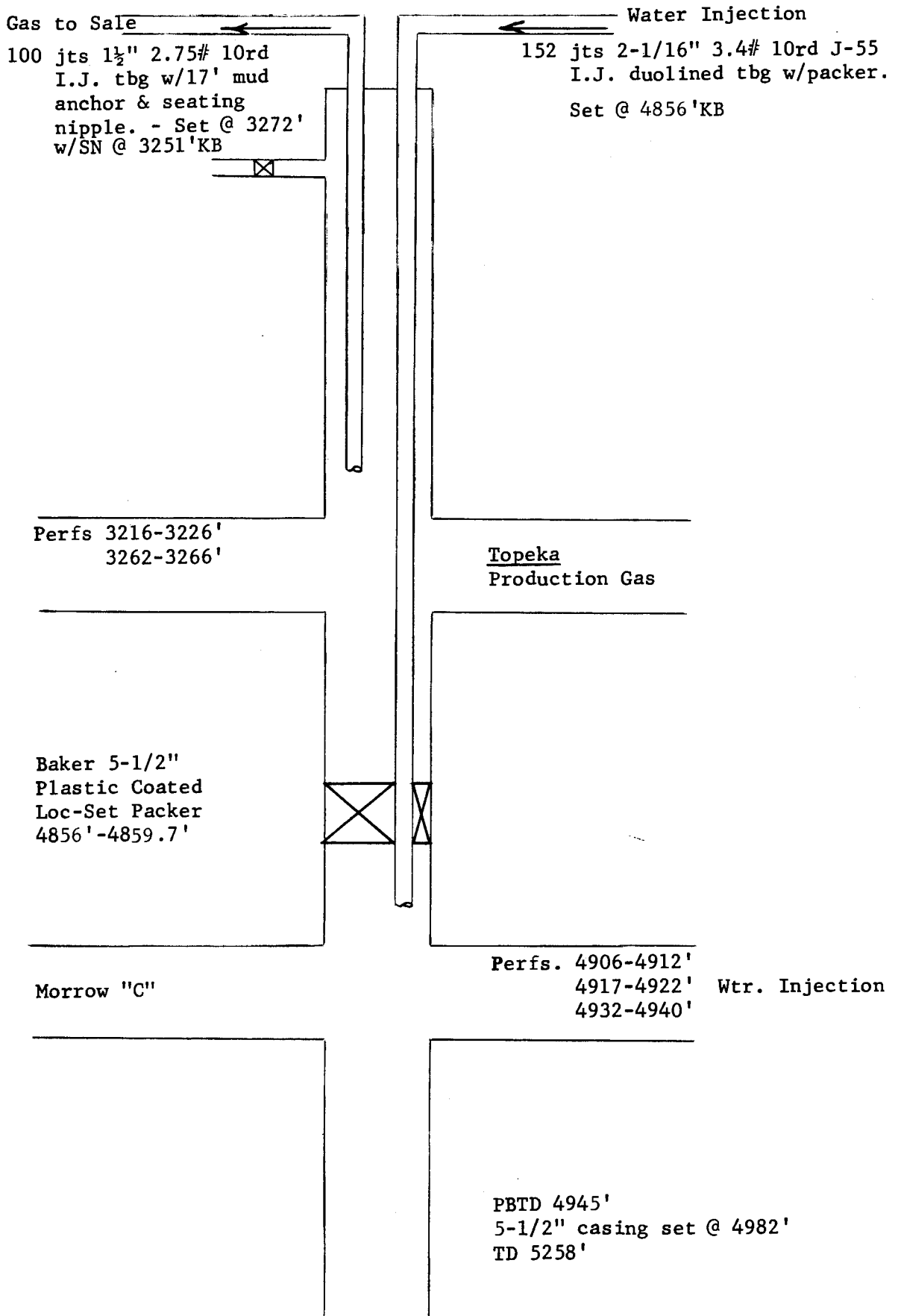
WILBURTON MORROW "C" UNIT 2302W Water Injection  
GORE D-2 Topeka Gas Production

C SE SW Section 4-35S-41W - Morton County, Kansas

State Geological Survey  
WICHITA, BRANCH

DIAGRAMMATIC SKETCH SHOWING MULTIPLE COMPLETION INSTALLATION

4-35-41W



DATE: January 14, 1974

Field Wilburton - Morrow "C"  
~~Greenwood - Topeka~~

Operator Cities Service Oil Company

County Morton

Lease Wilburton Morrow "C" Unit 2302W  
Gore D Well No. 2

Location C SE SW Section 4-35S-41W

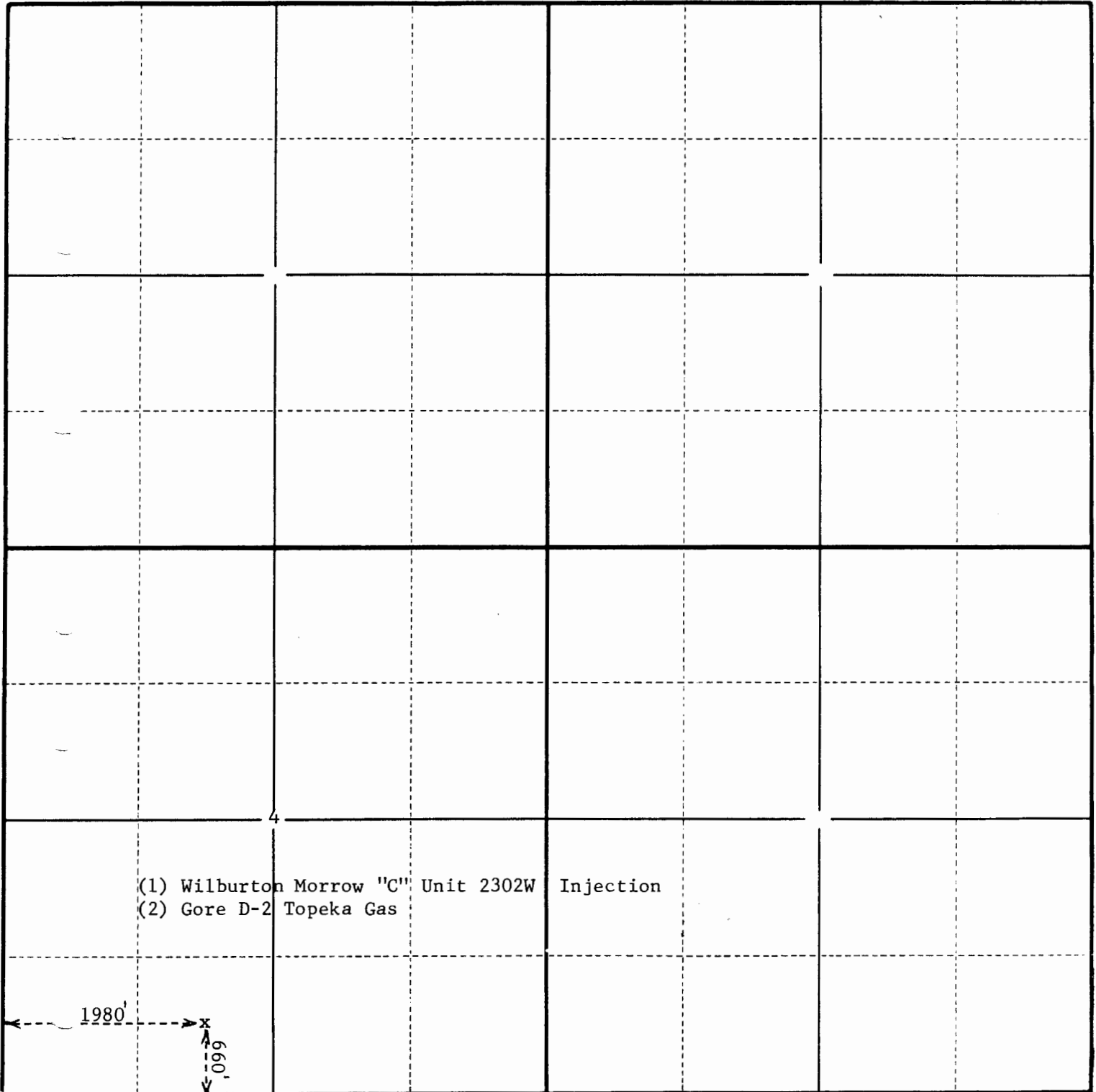
STATE CORPORATION COMMISSION  
CONSERVATION DIVISION  
500 INSURANCE BLDG.  
212 NORTH MARKET  
WICHITA 2, KANSAS

4-35-41W

NOTE: REVISED PLAT for  
Recompleted Dual Morrow  
"C" Injection and Topeka  
Gas Wells.

WICHITA BRANCH

Township 35S Range 41W County Morton Pool Wilburton



STATE OF KANSAS  
STATE CORPORATION COMMISSION-CONSERVATION DIVISION  
500 Insurance Building-212 North Market  
Wichita 2, Kansas

4-5-41W  
State Geological Survey  
Wichita, Kansas

DATA AND AFFIDAVIT

(File one copy)

(On Cementing In Surface or Drive Pipe and required by Rule 82-2-123 of the Commission for compliance with Section 55-136, 55-137, and 55-138, 1947 Supplement to G. S. Kansas 1935)

Lease Owner Cities Service Petroleum Company

Office Address Box 1147 Liberal, Kansas

Lease Name Gore "D" Well No. 2

Well Location (Example: C N/2 NE/4 NE/4 or footage from lines)  
C SE SW SEC 4 TWP 35S RGE 41W (E) County Morton

Contractor Lohmann-Johnson Drlg. Co.

Office Address Evansville, Indiana

Drilled with (~~rotary~~) (Rotary) tools: Date pipe set 1-19- 19 62

SURFACE HOLE DATA

SURFACE PIPE DATA

Size of Hole 12 1/2 Csg. (New) (~~used~~) Size 8-5/8" Wt. 24#

Depth 1505 Where set 1504

METHOD OF CEMENTING

(a) Cement: Amount and kind 975 ex common cement

Method: (By Service Co., Dump, Tog., etc.) Halliburton Company

Est. Height Cement behind pipe 1504' to surface

(b) Cementing Material: Explain method. (Example: 8-5/8 w/swag nipple run inside 15", Bridge hold 2/rock and hole filled with cementing material, 15" pipe pulled.)

Describe cementing material \_\_\_\_\_

GROUND WATER INFORMATION

Depth to bottom of lowest fresh water producing stratum 300

Name of lowest fresh water producing stratum \_\_\_\_\_

Surface elevation of well 3474'

ADDITIONAL INFORMATION

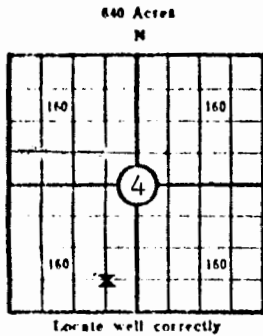
State Geological Survey  
WICHITA, BRANCH

4-35-41W

KANSAS CORPORATION COMMISSION

WELL RECORD

(Mail to Kansas Geological Survey, 4150 Monroe Street, Wichita, Kansas 67209)



Lease Name: GORE D Well No. 2  
 Well Located: \_\_\_\_\_  
C SE SW SEC 4 TWP 35S RGE 41W  
 Operator: Cities Service Oil Company  
 Address: 3545 N.W. 58th, Oklahoma City, Okla. 73112  
 Elevation: Ground 3494 D.F. \_\_\_\_\_ K.B. \_\_\_\_\_  
 Type Well: (Oil, gas, dry hole) gas

|                     |                  |  |
|---------------------|------------------|--|
| PBTD                |                  | PBTD   |
| Drilling Commenced: | <u>10/8 1973</u> | Drilling Completed: <u>1/8 1974</u>          |
| Well Completed:     | <u>1/8 1974</u>  | Total Depth <u>5258'</u> , PBTD <u>4945'</u> |
| Initial Production: | _____            | _____  |

Casing Record

|                     |                     |             |              |
|---------------------|---------------------|-------------|--------------|
| Size: <u>8-5/8"</u> | Set at <u>1504'</u> | Size: _____ | Set at _____ |
| Size: <u>5-1/2"</u> | Set at <u>4982'</u> | Size: _____ | Set at _____ |

Liner Record

Size: Packer Set <sup>@</sup> ~~from~~ 4856' KB ~~to~~ 12/6/73

Cementing

| Casing Size   | Sacks      | Type Cement and Additives                                     |
|---------------|------------|---|
| <u>8-5/8"</u> | <u>975</u> | <u>Common Cement (Set January 19, 1962)</u>                   |
| <u>5-1/2"</u> | <u>300</u> | <u>Cement (Pozmix w/75# flocele &amp; 4% gel, set 2/7/62)</u> |

Perforations

| Formation     | Perforated Interval and Number Shots    |
|---------------|---|
| <u>Topeka</u> | <u>3186-90' - 8 jets, squeezed off.</u> |
| <u>Topeka</u> | <u>3216-26' - 20 jets</u>               |
| <u>Topeka</u> | <u>3262-66' - 8 jets</u>                |

Electric Log Run. (Show type log and depths covered)

---  
 ---

(Fill in formation and related information on reverse side)

NOTE: Dually completed w/Wilburton Morrow "C" Unit #2302W (inj) or Gore D-2 Topeka gas.

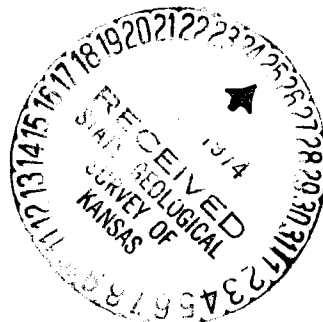
- (1) Gore D-2 - Topeka
- (2) WMSU 2302 Morrow "C" Injection

FORMATION, TESTING AND COMPLETION RECORD

Show Drill Stem Tests,  
Well Stimulation and  
Production Tests

| Formation             | Top  | Bottom |
|-----------------------|------|--------|
| Sand & Shale          | 0    | 163    |
| Sand, Red Bed & Gyp   | 163  | 670    |
| Red Bed               | 670  | 885    |
| Gyp                   | 885  | 955    |
| Red Rock, Shale & Gyp | 955  | 1045   |
| Sand & Shale          | 1045 | 1494   |
| Anhydrite             | 1494 | 1505   |
| Anhyd-Gray Dolomite   | 1504 | 1580   |
| Rock & Shale          | 1580 | 1790   |
| Shale                 | 1790 | 2615   |
| Shale & Lime          | 2615 | 3125   |
| Lime                  | 3125 | 3196   |
| Lime, Sand & Shale    | 3196 | 3335   |
| Lime & Shale          | 3335 | 3478   |
| Lime                  | 3478 | 3808   |
| Shale & Lime          | 3808 | 3913   |
| Lime                  | 3913 | 4018   |
| Shale & Lime          | 4018 | 4098   |
| Lime                  | 4098 | 4206   |
| Lime & Shale          | 4206 | 4360   |
| Lime                  | 4360 | 4422   |
| Lime Shale            | 4422 | 4664   |
| Lime                  | 4664 | 4713   |
| Lime - Shale          | 4713 | 4849   |
| Shale                 | 4849 | 4902   |
| Shale & Lime          | 4902 | 4930   |
| Shale & Sdy Shale     | 4930 | 5032   |
| Shale                 | 5032 | 5162   |
| Sand                  | 5162 | 5175   |
| Shale & Sand          | 5175 | 5258   |
| T.D.                  | 5258 |        |

NOTE: Taken from original  
drilling report.



REVISED

**KANSAS DRILLERS LOG**

Dual Completed GORE D-2 Topeka Gas Well, Wilburton Morrow "C" 232 Wtr. Injection Well

S. 4 T. 35S R. 41 <sup>NE</sup> W  
 Loc. C SE SW  
 County Morton

API No. 15 — 99287 — C(C-17,111) 0WVO  
 County Number

Operator  
 Cities Service Oil Company

Address  
 3545 N.W. 58th, Oklahoma City, Oklahoma 73112

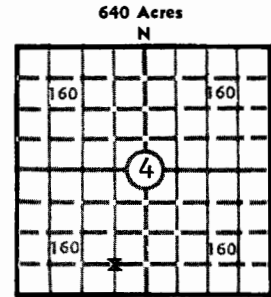
Well No. 2 Lease Name GORE "D"

Footage Location  
660 feet from (R) (S) line 1980 feet from (E) (W) line

Principal Contractor --- Geologist ---

Spud Date --- Total Depth 5258' P.B.T.D. 4945'

Date Completed January 8, 1974 Oil Purchaser Gas Purchaser  
 Not Assigned



Elev.: Gr. 3494'  
 DF. --- KB. ---

**CASING RECORD**

Report of all strings set — surface, intermediate, production, etc.

| Purpose of string | Size hole drilled | Size casing set (in O.D.) | Weight lbs/ft. | Setting depth | Type cement | Sacks | Type and percent additives |
|-------------------|-------------------|---------------------------|----------------|---------------|-------------|-------|----------------------------|
| Surface           | 12-1/4"           | 8-5/8"                    | 24             | 1504          | Common      | 974   | ---                        |
| Intermediate      | 7-1/4"            | 5-1/2"                    | 14             | 4982          | Pozmix      | 300   | w/75# flocele & 4% gel     |
|                   |                   |                           |                |               |             |       |                            |
|                   |                   |                           |                |               |             |       |                            |

**LINER RECORD**

**PERFORATION RECORD**

| Top, ft.      | Bottom, ft.   | Sacks cement  | Shots per ft. | Size & type | Depth interval |
|---------------|---------------|---------------|---------------|-------------|----------------|
| ---           | ---           | ---           | 2             | .57 SDJ     | 3216-26'       |
| TUBING RECORD |               |               | 2             | .57 SDJ     | 3262-66'       |
| Size          | Setting depth | Packer set at |               |             |                |
| 1 1/2"        | 3272'         | 4856' KB      |               |             |                |

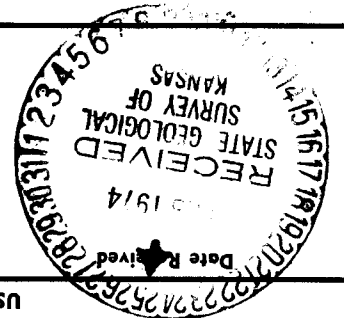
**ACID, FRACTURE, SHOT, CEMENT SQUEEZE RECORD**

| Amount and kind of material used                            | Depth interval treated |
|---|------------------------|
| Acidized w/Dowell 15% HCL & BDA, approximately 24,000 gals. | SAME as Perf. record   |
|   |                        |
|   |                        |

**INITIAL PRODUCTION**

|   |   |                          |  |                   |      |
|---|---|--------------------------|--|-------------------|------|
| Date of first production<br><u>January 8, 1974</u>                      | Producing method (flowing, pumping, gas lift, etc.)<br><u>Flowing</u> |                          |  |                   |      |
| RATE OF PRODUCTION PER 24 HOURS   | Oil --- bbls.   | Gas <u>CAOF 2505</u> MCF | Water --- bbls.                                      | Gas-oil ratio --- | CFPB |
| Disposition of gas (vented, used on lease or sold)<br><u>to be sold</u> |   |                          | Producing interval(s)<br><u>same as perf record.</u> |                   |      |

INSTRUCTIONS: As provided in KCC Rule 82-2-125, within 90 days after completion of a well, one completed copy of this Drillers Log shall be transmitted to the State Geological Survey of Kansas, 4150 Monroe Street, Wichita, Kansas 67209. Copies of this form are available from the Conservation Division, State Corporation Commission, 3830 So. Meridian (P.O. Box 17027), Wichita, Kansas 66217. Phone AC 316-522-2206. If confidential custody is desired, please note Rule 82-2-125. Drillers Logs will be on open file in the Oil and Gas Division, State Geological Survey of Kansas, Lawrence, Kansas 66044.



Date: January 14, 1974  
 Title: ~~Operations Manager - Mid-Continent South Region~~  
 Signature: *H. E. Massey*  
 H. E. Massey

USE ADDITIONAL SHEETS, IF NECESSARY, TO COMPLETE WELL RECORD.

| DEPTH | NAME | BOTTOM | TOP  | FORMATION DESCRIPTION, CONTENTS, ETC. |
|-------|------|--------|------|---------------------------------------|
|       |      |        | 163  | Sand & Shale                          |
|       |      |        | 670  | Sand, Red Bed & Gyp                   |
|       |      |        | 885  | Red Bed                               |
|       |      |        | 955  | Gyp                                   |
|       |      |        | 1045 | Red Rock, Shale & Gyp                 |
|       |      |        | 1045 | Sand & Shale                          |
|       |      |        | 1494 | Anhydrite                             |
|       |      |        | 1504 | Anhyd-Gray Dolomite                   |
|       |      |        | 1580 | Red Rock & Shale                      |
|       |      |        | 1790 | Shale                                 |
|       |      |        | 2615 | Shale & Lime                          |
|       |      |        | 3125 | Lime                                  |
|       |      |        | 3196 | Lime, Sand & Shale                    |
|       |      |        | 3335 | Lime & Shale                          |
|       |      |        | 3478 | Lime                                  |
|       |      |        | 3808 | Shale & Lime                          |
|       |      |        | 3913 | Lime                                  |
|       |      |        | 4018 | Shale & Lime                          |
|       |      |        | 4098 | Lime                                  |
|       |      |        | 4206 | Lime & Shale                          |
|       |      |        | 4360 | Lime                                  |
|       |      |        | 4422 | Lime Shale                            |
|       |      |        | 4664 | Lime                                  |
|       |      |        | 4713 | Lime - Shale                          |
|       |      |        | 4849 | Shale                                 |
|       |      |        | 4902 | Shale & Lime                          |
|       |      |        | 4930 | Shale & Sdy Shale                     |
|       |      |        | 5032 | Shale                                 |
|       |      |        | 5162 | Sand                                  |
|       |      |        | 5175 | Shale & Sand                          |
|       |      |        | 5258 | T.D.                                  |

NOTE: Taken from original drilling report.

Operator: Cities Service Oil Company

Well No.: 2

Lease Name: GORE D

S 4 T 35S R 41 W

WELL LOG

Show all important zones of porosity and contents thereof; cored intervals, and all drill-stem tests, including depth interval tested, cushion used, time tool open, flowing and shut-in pressures, and recoveries.

SHOW GEOLOGICAL MARKERS, LOGS RUN, OR OTHER DESCRIPTIVE INFORMATION.

DESIGNATE TYPE OF COMP.: OIL, GAS, DRY HOLE, SWDW, ETC.:

GAS