

State Geological Survey
 WICHITA, BRANCH

RECOMPLETION -

4-35-41W

**REVISED
 KANSAS DRILLERS LOG**

Dual Completed WMSU 2302 Wtr Inj
 and Gore D-2 Topeka Gas Well

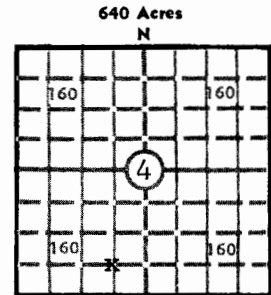
S. 4 T. 35S R. 41 ~~EX~~
 W

Loc. C SE SW

API No. 15 _____
 County _____ Number _____

County Morton

Operator Cities Service Oil Company	
Address 3545 N.W. 58th, Oklahoma City, Oklahoma 73112	
Well No. 2302W	Lease Name WIBURTON MORROW "C" UNIT
Footage Location 660 feet from MM (S) line 1980 feet from WX (W) line	
Principal Contractor ---	Geologist ---
Spud Date ---	Total Depth 5258'
	P.B.T.D. 4945'
Date Completed January 8, 1974	Oil Purchaser ---



Locate well correctly

Elev.: Gr. 3494'

DF. ---- KB. ----

CASING RECORD

Report of all strings set — surface, intermediate, production, etc.

Purpose of string	Size hole drilled	Size casing set (in O.D.)	Weight lbs/ft.	Setting depth	Type cement	Sacks	Type and percent additives
Surface	12-1/4"	8-5/8"	24	1504'	Common	975	---
Intermediate	7-1/4"	5-1/2"	14	4982'	Pozmix	300	w/75# flocele & 4% gel

LINER RECORD

PERFORATION RECORD

Top, ft.	Bottom, ft.	Sacks cement	Shots per ft.	Size & type	Depth interval
---	---	---	5	.57 J	4906-12'
TUBING RECORD			20	.57 J	4917-22'
Size	Setting depth	Packer set at			
2-1/16"	4840'	4856'KB	2	.57 J	4932-40'

ACID, FRACTURE, SHOT, CEMENT SQUEEZE RECORD

Amount and kind of material used	Depth interval treated
Acidized w/Dowell 15% HCl & BDA approximately 3250 gals	Same @ Perf record

INITIAL PRODUCTION

Date of first production injection December 14, 1973	Producing method (flowing, pumping, gas lift, etc.) injecting
RATE OF PRODUCTION PER 24 HOURS	Oil --- bbls. Gas --- MCF Water Injecting 1100 bbls. Gas-oil ratio --- CFPB
Disposition of gas (vented, used on lease or sold) N.A.	Producing interval (s) same as Perf record

INSTRUCTIONS: As provided in KCC Rule 82-2-125, within 90 days after completion of a well, one completed copy of this Drillers Log shall be transmitted to the State Geological Survey of Kansas, 4150 Monroe Street, Wichita, Kansas 67209. Copies of this form are available from the Conservation Division, State Corporation Commission, 3830 So. Meridian (P.O. Box 17027), Wichita, Kansas 66217. Phone AC 316-522-2206. If confidential custody is desired, please note Rule 82-2-125. Drillers Logs will be on open file in the Oil and Gas Division, State Geological Survey of Kansas, Lawrence, Kansas 66044.



Date: January 14, 1974
 Title: Operations Manager - Mid-Continent South Region
 Signature: H. E. Massey

USE ADDITIONAL SHEETS, IF NECESSARY, TO COMPLETE WELL RECORD.

DEPTH	NAME	BOTTOM	TOP	FORMATION DESCRIPTION, CONTENTS, ETC.
163			0	Sand & Shale
670			163	Sand, Red Bed & Gyp
885			670	Red Bed
885			885	Gyp
955			885	Red Rock, Shale & Gyp
1045			955	Sand & Shale
1494			1045	Anhydrite
1505			1494	Anhyd-Gray Dolomite
1580			1505	Red Rock & Shale
1790			1580	Shale
2615			1790	Shale & Lime
3125			2615	Lime
3196			3125	Lime, Sand & Shale
3335			3196	Lime & Shale
3478			3335	Lime
3808			3478	Shale & Lime
3913			3808	Lime
4018			3913	Shale & Lime
4098			4018	Lime & Lime
4206			4098	Lime & Shale
4360			4206	Lime
4422			4360	Lime Shale
4664			4422	Lime - Shale
4713			4664	Shale
4849			4713	Shale & Lime
4902			4849	Shale & Shy Shale
4930			4902	Shale
5032			4930	Shale & Lime
5162			5032	Shale
5175			5162	Sand
5258			5175	Shale & Sand
5258			5258	T.D.

NOTE: Taken from original drilling report.

Operator: Cities Service Oil Company
 Well No.: 2302 W
 Lease Name: WILBURTON MORROW "C" SAND UNIT
 S 4 T 35S R 41 W
 WELL LOG
 Show all important zones of porosity and contents thereof; cored intervals, and all drill-stem tests, including depth interval tested, cushion used, time tool open, flowing and shut-in pressures, and recoveries.
 SHOW GEOLOGICAL MARKERS, LOGS RUN, OR OTHER DESCRIPTIVE INFORMATION.
 DESIGNATE TYPE OF COMP.: OIL, GAS, DRY HOLE, SWDW, ETC.:
 Injection (Wtr.)

REVISED
WELL RECORD

State Geological Survey
WICHITA BRANCH

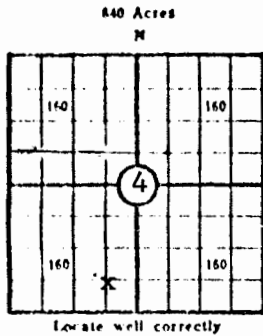
RECOMPLETE TO INJECTION WELL -

KANSAS CORPORATION COMMISSION

WELL RECORD

4-35-41W

(Mail to Kansas Geological Survey, 4150 Monroe Street, Wichita, Kansas 67209)



Lease Name: WILBURTON MORROW "C" UNIT Well No. 2302
 Well Located: _____
C SE SW SEC 4 TWP 35S RGE 41W
 Operator: Cities Service Oil Company
 Address: 3545 N.W. 58th St., Oklahoma City, Okla. 73112
 Elevation: Ground 3494' D.F. _____ K.B. _____
 Type Well: (Oil, gas, dry hole) Injection

Re-Completion		Re-Completion	
Drilling Commenced:	<u>10/8 1973</u>	Drilling Completed:	<u>1/8 1974</u>
Well Completed:	<u>1/8 1974</u>	Total Depth	<u>5258', PBD 4945'</u>
Initial Production:	_____		

Casing Record

Size: <u>8-5/8"</u>	Set at <u>1504'</u>	Size: _____	Set at _____
Size: <u>5-1/2"</u>	Set at <u>4982'</u>	Size: _____	Set at _____

Liner Record

Size: Packer Set ~~from~~ [@] 4856'KB ~~To~~ 12/6/73

Cementing

<u>Casing Size</u>	<u>Sacks</u>	<u>Type Cement and Additives</u>
<u>8-5/8"</u>	<u>975</u>	<u>Common Cement (Set 1/19/62)</u>
<u>5-1/2"</u>	<u>300</u>	<u>Cement (Pozmis w/75% flocele & 4% gel, set 2/7/62)</u>

Perforations

<u>Formation</u>	<u>Perforated Interval and Number Shots</u>
<u>Morrow "C"</u>	<u>4906-12'24 jets)</u>
<u>Morrow "C"</u>	<u>4917-22'20 jets) Re-acidized 10/11/73</u>
<u>Morrow "C"</u>	<u>4932-40'40 jets)</u>

Electric Log Run. (Show type log and depths covered)

(Fill in formation and related information on reverse side)

NOTE: Dually completed as Morrow "C" injection well and Topeka gas well.
 (1) Morrow "C" - WMSU 2302W
 (2) Topeka - Gore D-2

4-35-4w

FORMATION, TESTING AND COMPLETION RECORD

Show Drill Stem Tests,
Well Stimulation and
Production Tests

Formation	Top	Bottom
Sand & Shale	0	163
Sand, Red Bed & Gyp	163	670
Red Bed	670	885
Gyp	885	955
Red Rock, Shale & Gyp	955	1045
Sand & Shale	1045	1494
Anhydrite	1494	1505
Anhyd-Gray Dolo	1504	1580
Red Rock & Shale	1580	1790
Shale	1790	2615
Shale & Lime	2615	3125
Lime	3125	3196
Lime, Sand & Shale	3196	3335
Lime & Shale	3335	3478
Lime	3478	3808
Shale & Lime	3808	3913
Lime	3913	4018
Shale & Lime	4018	4098
Lime	4098	4206
Lime & Shale	4206	4360
Lime	4360	4422
Lime & Shale	4422	4664
Lime	4664	4713
Lime - Shale	4713	4849
Shale	4849	4902
Shale & Lime	4902	4930
Shale & SdyShale	4930	5032
Shale	5032	5162
Sand	5162	5175
Shale & Sand	5175	5258
T.D.	5258	

NOTE: Taken from original drilling report.



4-35-41W

REVISED
TWO-ZONE COMPLETION RECORD

DOCKET NO. 99,287-C
(C-17,111)
DATED: September 28, 1973

OPERATOR Cities Service Oil Company LOCATION OF WELL:
WILBURTON MORROW "C" UNIT 2302W
LEASE GORE D-2 660 ft. From South Line
Well Number --- 1980 ft. From West Line
of the SW/4 of Sec. 4 T.35S R.41W
COUNTY Morton POOL Wilburton
UPPER PRODUCING FORMATION Topeka TOP 3186' ^{Greenwood} BASE 3266'
LOWER PRODUCING FORMATION Morrow "C" TOP 4906' BASE 4940'
DATE OF COMPLETION ^{Re-} January 8, 1974

CASING RECORD

Length	Size	Weight	Condition	Cement	Size Hole	Est. Height of Cement
1504	8-5/8"	24#	A	975	12-1/4	Circulated
4982	5-1/2"	14#	B-1966 A-3016	300	7-7/8	2390

* If liner, show top and bottom.

Description of Packer: Baker 5-1/2" plastic coated Lok-set packer

WHERE SET: TOP 4856'KB BOTTOM 4859.7' DATE SET December 6, 1973

PERFORATING RECORD

Size Holes	Number of Holes	From	To	Date	By
Jets	40	4906	4912	2/13/62	McCullough
Jets	20	4917	4922	2/13/62	McCullough
Jets	24	4932	4940	2/13/62	McCullough
Frac Notch	--	3302	--	2/27/62	McCullough (squeezed off 10/24/71)
Jets	20	3216	3216	10/11/73	McCullough
Jets	8	3262	3266	10/11/73	McCullough

REVISED
ACID RECORD

Formation	Amount Acid	Date	By
Morrow (4906-12)			
(4917-22)	500 gals	10/11/73	Dowell
Morrow (4932-40)	500 gals	10/10/73	Dowell
(4932-40)	500 gals	11/15/73	Dowell
(4932-40)	750 gals	11/16/73	Dowell
Morrow (4906-40)	1000 gals (2 stages)	11/21/73	Dowell
Topeka (3216-26)	500 gals	10/17/73	Dowell
(3216-26)	6000 gals	10/18/73	Dowell
Topeka (3262-66)	500 gals	10/13/73	Dowell
(3262-66)	4000 gals	10/15/73	Dowell
Topeka (3216-66)	500 gals	11/24/73	Dowell
Topeka (3262-66)	500 gals	11/25/73	Dowell
Topeka (3216-26)	500 gals	11/25/73	Dowell
Topeka (3262-66)	5000 gals	11/27/73	Dowell
Topeka (3216-26)	7000 gals	11/30/73	Dowell

4-35-41w

PRODUCTIVITY RECORD

FORMATION	INITIAL	DATE	CURRENT	DATE
Morrow C	(Inj) 441 Bbls Wtr	12/14/73	1115 BW	1/8/74
Topeka	CAOF 2505 MCF	1/8/74	---	---

TUBING & EQUIPMENT RECORD

When Producing from Above Packer Greenwood (Topeka)	When Producing From Below Packer Wilburton (Morrow)	When Injecting From Below Packer Wilburton (Morrow)
100 Jts. 1½" 2.75 10rd I.J. tbg 3,243.16'	152 Jts. 2-1/16" 3.4# J-55	I.J. Duo-lined tbg 4,851.06'
1 Seating Nipple .96'	1 Baker Loc-Set 5½"	Plastic coated packer 3.70'
1 Mud Anchor 17.20'	1 2-1/16" chgover cplg .75'	1 2-1/16"-2-3/8" upset
TOTAL 3,261.32'	chgover cplg .42'	TOTAL 4,855.93'
Set @ 3272'KB		Pkr. set @ 4856' K.B.

REMARKS:

WITNESSES:

For State Gilbert P. Leiker
 For Operator Robert P. Yucum
 For Offset _____

REVISED

WILBURTON MORROW "C" UNIT 2302W Water Injection
CORE D-2 Topeka Gas Production

4-35-41W

C SE SW Section 4-35S-41W - Morton County, Kansas

DIAGRAMMATIC SKETCH SHOWING MULTIPLE COMPLETION, INJECTION

State Geological Survey
WICHITA, BRANCH

