



# JOHNSTON OIL FIELD SERVICE CORPORATION

5702 NAVIGATION BLVD., P. O. BOX 165  
HOUSTON, TEXAS



Test O.K.  
SDE

## TEST TICKET

Date 12/5/51 Customer's Order No. \_\_\_\_\_

Name of Company National Associated Pet. Co.  
Address to Mail Invoice Ritz Bldg Tulsa, Okla.  
Address to Mail Pressure Charts ✓  
Lease V. Emerich Well No. 1 Field \_\_\_\_\_  
County Phillips State Kan District Plainville

FORMATION TEST No. 1 Successful No. 1 Mis-run No. \_\_\_\_\_; Size of Main Hole 7 7/8  
Depth \_\_\_\_\_; Size of Rat Hole \_\_\_\_\_ Depth \_\_\_\_\_; Total Depth Tight Hole; Packer Set at T.H.  
and \_\_\_\_\_; Single \_\_\_\_\_ Dual ✓ Straddle \_\_\_\_\_ Perf. Between Packers \_\_\_\_\_; Rubber  
Size 6 7/8 X 2 7/8 X 30; Anchor Size 1 1/2; Size of Test Tool 3 1/2; Tool Joint Size 4 1/2  
Thread F.H.; Jar Size \_\_\_\_\_ Make \_\_\_\_\_; Shut-in Tool? Yes ✓ No \_\_\_\_\_; Shut-in Rev.  
Tool? Yes \_\_\_\_\_ No ✓; Reverse Circulation? Yes \_\_\_\_\_ No ✓; Shut-in? Yes ✓ No \_\_\_\_\_;  
Bottom Hole Sample Bomb? Yes \_\_\_\_\_ No ✓

~~CASING TEST No. \_\_\_\_\_ Successful No. \_\_\_\_\_ Mis-run No. \_\_\_\_\_; Size of Casing \_\_\_\_\_ Wt. \_\_\_\_\_  
Depth of Shoe \_\_\_\_\_; Size of Liner \_\_\_\_\_ Wt. Length \_\_\_\_\_; Packer Set at \_\_\_\_\_  
Single \_\_\_\_\_ Straddle \_\_\_\_\_ Perf. Between Packers \_\_\_\_\_; Rubber Size \_\_\_\_\_  
Size of Tool \_\_\_\_\_ Jar Size \_\_\_\_\_ Make \_\_\_\_\_ Shut-in Rev. Tool? Yes \_\_\_\_\_ No \_\_\_\_\_  
Reverse Circulation? Yes \_\_\_\_\_ No \_\_\_\_\_; Shut-in? Yes \_\_\_\_\_ No \_\_\_\_\_; Tool Size \_\_\_\_\_ Tool Joint  
Size \_\_\_\_\_ Thread \_\_\_\_\_ Upset \_\_\_\_\_ Straight \_\_\_\_\_; Bottom Hole Sampler? Yes \_\_\_\_\_ No \_\_\_\_\_~~

PRESSURE RECORDERS: Top Make Long Cap. 3000 No. 216; Bottom Make Long Cap. 3000 No. 216  
Between Packers Make \_\_\_\_\_ Cap \_\_\_\_\_ No. \_\_\_\_\_; Make \_\_\_\_\_ Cap \_\_\_\_\_ No. \_\_\_\_\_

Drill Pipe: Run Dry ✓ With Fluid \_\_\_\_\_  
Choke Size: Bottom 1/2 Surface 1/2

RESULTS  
Set Packer 5:55 P.M.; Open Disc Valve 5:57 P.M.; Tool Open 1 Hrs. \_\_\_\_\_ min.; Shut-in  
Hr. 15 min.; Reverse & Condition Mud \_\_\_\_\_ Hrs. \_\_\_\_\_ min.; Blow Tight hole  
Max. Surface Pressure \_\_\_\_\_ # Did Well Flow? Yes \_\_\_\_\_ No ✓; Fluid Rise Tight hole  
Oil, \_\_\_\_\_ Gas, \_\_\_\_\_ Salt Water, \_\_\_\_\_ Mud, \_\_\_\_\_ Sand, \_\_\_\_\_

Testing Squeeze? Yes \_\_\_\_\_ No ✓; Perf. From \_\_\_\_\_ to \_\_\_\_\_ Perf. by \_\_\_\_\_  
Temperature \_\_\_\_\_ °; Extra Equipment none  
Was Anchor Plugged? No Tool? No How Many Rubbers Damaged? none; Mud Wt. 9.5 Vis. 35  
Tool Rental Time \_\_\_\_\_ Operators Time \_\_\_\_\_ Excess Waiting Time none

Johnston Oil Field Service Corporation shall not be liable for damage of any kind to the property or personnel of the party for whom a test is made, or from any loss suffered or sustained, directly or indirectly, through or in the course of the use of its equipment, or its statement or opinion concerning the result of any test, all of which loss or damage is assumed by the customer. Tools lost or damaged in the hole shall be paid for at the cost of the party for whom test is made.

Approved Leif T. Zimball Our Representative J. L. Phillips  
A ticket must be made with complete information for each run, whether successful or not. Dale E. Wines



# JOHNSTON OIL FIELD SERVICE CORPORATION

5702 NAVIGATION BLVD., P. O. BOX 165  
HOUSTON, TEXAS



## TEST TICKET

*Test OK  
8x5*

Date 12/7/51 Customer's Order No. \_\_\_\_\_

Name of Company National Associated Pet. Co.  
Address to Mail Invoice Ritz Bldg., Tulsa, Okla.  
Address to Mail Pressure Charts \_\_\_\_\_  
Lease Vers Emerick Well No. 1 Field \_\_\_\_\_  
County Phillips State Kan District Plainville

FORMATION TEST No. R Successful No. R Mis-run No. \_\_\_\_\_; Size of Main Hole 7 7/8  
Depth \_\_\_\_\_; Size of Rat Hole \_\_\_\_\_; Depth \_\_\_\_\_; Total Depth Tight hole; Packer Set at T.H.  
and \_\_\_\_\_; Single  Dual \_\_\_\_\_ Straddle \_\_\_\_\_ Perf. Between Packers \_\_\_\_\_; Rubber  
Size 6 3/4 X 2 7/8 X 30; Anchor Size 4 1/2; Size of Test Tool 3 1/2; Tool Joint Size 4 1/2  
Thread F.H.; Jar Size \_\_\_\_\_ Make \_\_\_\_\_; Shut-in Tool? Yes  No \_\_\_\_\_; Shut-in Rev.  
Tool? Yes \_\_\_\_\_ No ; Reverse Circulation? Yes \_\_\_\_\_ No ; Shut-in? Yes  No \_\_\_\_\_;  
Bottom Hole Sample Bomb? Yes \_\_\_\_\_ No

~~CASING TEST No. \_\_\_\_\_ Successful No. \_\_\_\_\_ Mis-run No. \_\_\_\_\_; Size of Casing \_\_\_\_\_ " Wt. \_\_\_\_\_  
Depth of Shoe \_\_\_\_\_; Size of Liner \_\_\_\_\_ " Wt. Length \_\_\_\_\_; Packer Set at \_\_\_\_\_  
Single \_\_\_\_\_ Straddle \_\_\_\_\_ Perf. Between Packers \_\_\_\_\_; Rubber Size \_\_\_\_\_  
Size of Tool \_\_\_\_\_; Jar Size \_\_\_\_\_ Make \_\_\_\_\_ Shut-in Rev. Tool? Yes \_\_\_\_\_ No \_\_\_\_\_  
Reverse Circulation? Yes \_\_\_\_\_ No \_\_\_\_\_; Shut-in? Yes \_\_\_\_\_ No \_\_\_\_\_; Tool Size \_\_\_\_\_ Tool Joint  
Size \_\_\_\_\_ Thread \_\_\_\_\_ Upset \_\_\_\_\_ Straight \_\_\_\_\_; Bottom Hole Sampler? Yes \_\_\_\_\_ No \_\_\_\_\_~~

PRESSURE RECORDERS: Top Make Long Cap 3000 No. 216; Bottom Make Long Cap 3000 No. 215  
Between Packers Make \_\_\_\_\_ Cap \_\_\_\_\_ No. \_\_\_\_\_; Make \_\_\_\_\_ Cap \_\_\_\_\_ No. \_\_\_\_\_

Drill Pipe: Run Dry  With Fluid \_\_\_\_\_  
Choke Size: Bottom 1/2 Surface 1/2

RESULTS  
Set Packer \_\_\_\_\_ M.; Open Disc Valve \_\_\_\_\_ M.; Tool Open \_\_\_\_\_ Hrs. \_\_\_\_\_ min.; Shut-in  
\_\_\_\_\_ Hr. \_\_\_\_\_ min.; Reverse & Condition Mud \_\_\_\_\_ Hrs. \_\_\_\_\_ min.; Blow T.H.  
Max. Surface Pressure \_\_\_\_\_ # Did Well Flow? Yes \_\_\_\_\_ No ; Fluid Rise T.H.  
Oil, \_\_\_\_\_ Gas, \_\_\_\_\_ Salt Water, \_\_\_\_\_ Mud, \_\_\_\_\_ Sand, \_\_\_\_\_

Testing Squeeze? Yes \_\_\_\_\_ No ; Perf. From \_\_\_\_\_ to \_\_\_\_\_ Perf. by \_\_\_\_\_  
Temperature \_\_\_\_\_; Extra Equipment None  
Was Anchor Plugged? No Tool? No How Many Rubbers Damaged? None; Mud Wt. 10.1 Vis. 36  
Tool Rental Time 8 Operators Time 10 Excess Waiting Time None

Johnston Oil Field Service Corporation shall not be liable for damage of any kind to the property or personnel of the party for whom a test is made, or from any loss suffered or sustained, directly or indirectly, through or in the course of the use of its equipment, or its statement or opinion concerning the result of any test, all of which loss or damage is assumed by the customer. Tools lost or damaged in the hole shall be paid for at the cost of the party for whom test is made.

Approved Kent Kimball Our Representative J. L. Phillips  
A ticket must be made with complete information for each run, whether successful or not.



# JOHNSTON OIL FIELD SERVICE CORPORATION

Test No. R  
828

5702 NAVIGATION BLVD., P. O. BOX 165  
HOUSTON, TEXAS



## TEST TICKET

## No 74903

Date 12-8-51 Customer's Order No. \_\_\_\_\_

Name of Company Nat. Associated Pet Co.  
Address to Mail Invoice Ritz Bldg. Tulsa, Okla.  
Address to Mail Pressure Charts \_\_\_\_\_  
Lease Americk Well No. 1 Field \_\_\_\_\_  
County Philips State Kans. District Plainville

FORMATION TEST No. 3 CASING TEST No. \_\_\_\_\_  
Successful No. 3 Mis-run No. \_\_\_\_\_ Successful No. \_\_\_\_\_ Mis-run No. \_\_\_\_\_  
Size Hole \_\_\_\_\_ Depth Well Tight Hole Size Casing \_\_\_\_\_  
Rat Hole Size \_\_\_\_\_ Depth \_\_\_\_\_ Tool Jt. 4 1/2 F.H. Packer Set at \_\_\_\_\_  
Packer Set at Tight Hole Test Tool Size 3 1/2 Type Packer Used \_\_\_\_\_  
Type Packer Used Well Anchor: Size 4 1/2 Length \_\_\_\_\_ Bottom of Perforation at \_\_\_\_\_  
Rubber—Size 6 3/4 - 2 1/2 - 30 Size Bean 1/2" x 1/2"  
PRESSURE RECORDER: Top Make Long Cap. 3000 No. 120; Bottom Make Long Cap. 3000 No. 17  
Drill Pipe: Run Dry \_\_\_\_\_ With Fluid \_\_\_\_\_

RESULTS  
Set Packer 6:27 P.M. Open Valve 6:31 P.M. Let Packer Set 1 hr  
Shut In Pressure Time 15 min Did Packer Hold? Yes  
Blow? \_\_\_\_\_

Fluid Rise \_\_\_\_\_

Type of Circulating Tool \_\_\_\_\_ Pump Press. \_\_\_\_\_ Hours \_\_\_\_\_ Mins. \_\_\_\_\_  
Bottom Hole Sample Bomb  Jar Size  Make  Charge Jars to   
Was Anchor Plugged? NO Extra Equipment none  
Was Tool Plugged? NO Mud Wt. 9.9 Vis. 34 Temperature \_\_\_\_\_  
WAS RUBBER DAMAGED? NO Tool Rental Time 8 Oper. Time 10

Johnston Oil Field Service Corporation shall not be liable for damage of any kind to the property or personnel of the party for whom a test is made, or from any loss suffered or sustained, directly or indirectly, through or in the course of the use of its equipment, or its statement or opinion concerning the result of any test, all of which loss or damage is assumed by the customer. Tools lost or damaged in the hole shall be paid for at the cost of the party for whom test is made.

Approved Kent T. Simbal Our Representative Dale E. Mines

A ticket must be made with complete information for each run, whether successful or not.



# JOHNSTON OIL FIELD SERVICE CORPORATION

5702 NAVIGATION BLVD., P. O. BOX 165  
HOUSTON, TEXAS



## TEST TICKET

## No. 74906

Date 12-10-57

Customer's Order No. \_\_\_\_\_

Name of Company National Associated Pet. Co.  
 Address to Mail Invoice Ritz Bldg. Tulsa, Okla.  
 Address to Mail Pressure Charts Same  
 Lease Fimerick Well No. 1 Field \_\_\_\_\_  
 County Phillips State KANS District Plainville

FORMATION TEST No. Four CASING TEST No. \_\_\_\_\_  
 Successful No. Four Mis-run No. \_\_\_\_\_ Successful No. \_\_\_\_\_ Mis-run No. \_\_\_\_\_  
 Size Hole 1 7/8 Depth Well Tight hole Size Casing \_\_\_\_\_  
 Rat Hole Size \_\_\_\_\_ Depth \_\_\_\_\_ Tool Jt. 4 1/2 Packer Set at \_\_\_\_\_  
 Packer Set at Tight hole Test Tool Size 3 1/2 Type Packer Used \_\_\_\_\_  
 Type Packer Used Wall Anchor: Size 4 1/2 Length 5' Bottom of Perforation at \_\_\_\_\_  
 Rubber—Size 6 3/4 x 2 7/8 x 30 Size Bean 1 1/2 x 1/2  
 PRESSURE RECORDER: Top Make Long Cap. 3000 No. 120; Bottom Make Long Cap. 3000 No. 12  
 Drill Pipe: Run Dry yes With Fluid \_\_\_\_\_

RESULTS  
 Set Packer 5:19 P.M. Open Valve 5:23 P.M. Let Packer Set 1 hr  
 Shut In Pressure Time \_\_\_\_\_ Did Packer Hold? yes  
 Blow? Tight hole

Fluid Rise Tight hole

Type of Circulating Tool \_\_\_\_\_ Pump Press. \_\_\_\_\_ Hours \_\_\_\_\_ Mins. \_\_\_\_\_  
 Bottom Hole Sample Bomb No Jar Size \_\_\_\_\_ Make \_\_\_\_\_ Charge Jars to \_\_\_\_\_  
 Was Anchor Plugged? NO Extra Equipment NO  
 Was Tool Plugged? No Mud Wt. 9.8 Vis. 30 Temperature \_\_\_\_\_  
 WAS RUBBER DAMAGED? NO Tool Rental Time 8 Oper. Time 10

Johnston Oil Field Service Corporation shall not be liable for damage of any kind to the property or personnel of the party for whom a test is made, or from any loss suffered or sustained, directly or indirectly, through or in the course of the use of its equipment, or its statement or opinion concerning the result of any test, all of which loss or damage is assumed by the customer. Tools lost or damaged in the hole shall be paid for at the cost of the party for whom test is made.

Approved Kent T. Kendall Our Representative Dale E. Miner

A ticket must be made with complete information for each run, whether successful or not.



# JOHNSTON OIL FIELD SERVICE CORPORATION

5702 NAVIGATION BLVD., P. O. BOX 165  
HOUSTON, TEXAS



Tasto.K  
278

## TEST TICKET

## Nº 74907

Date 12-11-51

Customer's Order No. \_\_\_\_\_

Name of Company National Associated Pet. Co.

Address to Mail Invoice Ritz Bldg. Tulsa Okla.

Address to Mail Pressure Charts Same

Lease EMMICK

Well No. 1

Field \_\_\_\_\_

County Phillips

State Kans.

District Plainville

FORMATION TEST No. Fire

CASING TEST No. \_\_\_\_\_

Successful No. Fire Mis-run No. \_\_\_\_\_

Successful No. \_\_\_\_\_ Mis-run No. \_\_\_\_\_

Size Hole 1 7/8

Depth Well Tight hole

Size Casing \_\_\_\_\_

Rat Hole Size \_\_\_\_\_ Depth \_\_\_\_\_

Tool Jt. 7/8

Packer Set at \_\_\_\_\_

Packer Set at Tight hole

Test Tool Size 3/2

Type Packer Used \_\_\_\_\_

Type Packer Used Ball

Anchor: Size 1 1/2 Length 16'

Bottom of Perforation at \_\_\_\_\_

Rubber—Size 6 3/4 x 3 7/8 - 30'

Size Bean 1/2 x 1/2

PRESSURE RECORDER: Top Make bang Cap. 3000 No. 120; Bottom Make bang Cap. 3000 No. 17

Drill Pipe: Run Dry Yes

With Fluid \_\_\_\_\_

### RESULTS

Set Packer 3:00 P.M.

Open Valve 3:06 P.M.

Let Packer Set 1 hr

Shut In Pressure Time 15 min

Did Packer Hold? Yes

Blow? T.H.

Fluid Rise T.H.

Type of Circulating Tool \_\_\_\_\_ Pump Press. \_\_\_\_\_ Hours \_\_\_\_\_ Mins \_\_\_\_\_

Bottom Hole Sample Bomb NO Jar Size \_\_\_\_\_ Make \_\_\_\_\_ Charge Jars to \_\_\_\_\_

Was Anchor Plugged? NO Extra Equipment NONE

Was Tool Plugged? NO Mud Wt. 9.8 Vis. 30 Temperature \_\_\_\_\_

WAS RUBBER DAMAGED? NO Tool Rental Time 10 Oper. Time 12

*Johnston Oil Field Service Corporation shall not be liable for damage of any kind to the property or personnel of the party for whom a test is made, or from any loss suffered or sustained, directly or indirectly, through or in the course of the use of its equipment, or its statement or opinion concerning the result of any test, all of which loss or damage is assumed by the customer. Tools lost or damaged in the hole shall be paid for at the cost of the party for whom test is made.*

Approved Frank T. Zumball

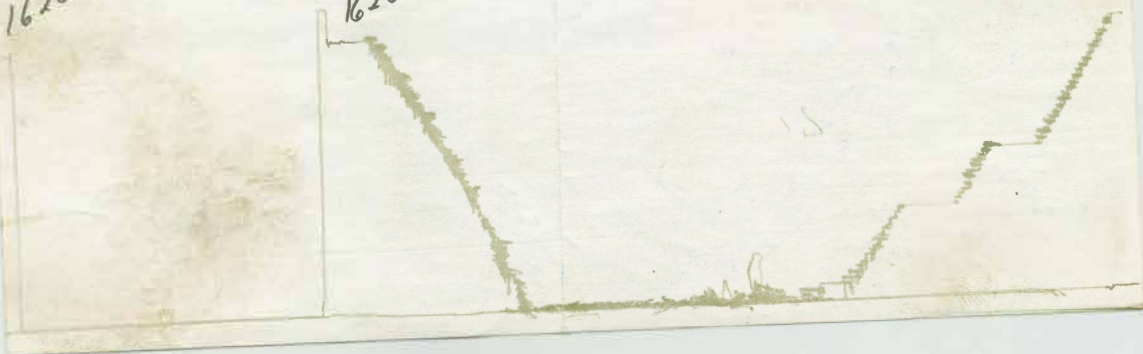
Our Representative Dale E. Miner

A ticket must be made with complete information for each run, whether successful or not.

L-17  
3000 #  
3-24-51

1620

1620



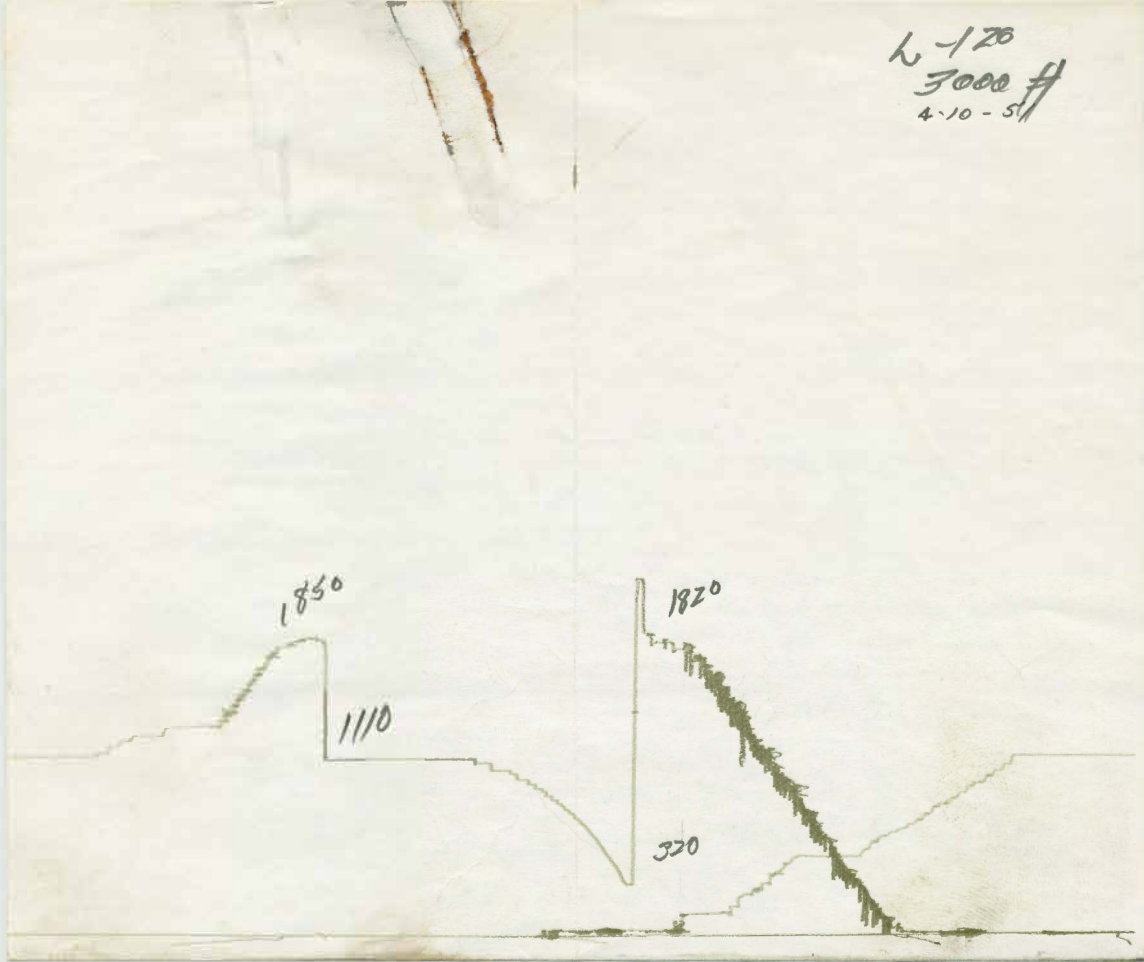
L-120  
3000 #  
4-10-51

1850

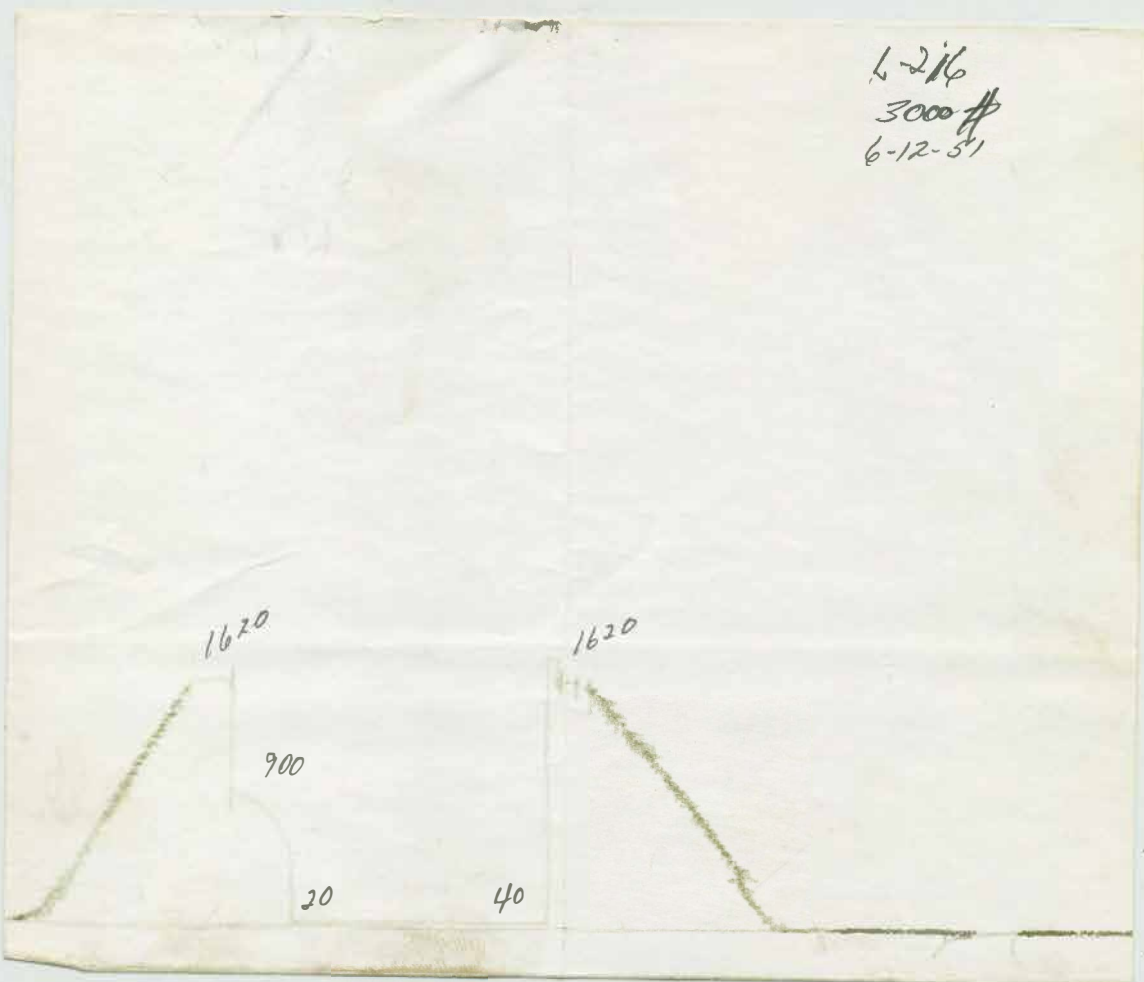
1110

1820

320



L-216  
3000 #  
6-12-51



L-216  
3000 #  
6-12-51

