



# TRILOBITE TESTING INC.

P.O. Box 1733 • Hays, Kansas 67601

RECEIVED

MAY 26 2011

## Test Ticket

NO. 041108 15799

Well Name & No. Hansen Foundation #1-13 Test No. 1 Date 5/17/11  
 Company Baird Oil Company, LLC Elevation 2213 KB 2208 GL  
 Address 113 W Main / P.O. Box 428 Logan KS 67646  
 Co. Rep / Geo. Richard Bell Rig LW #8  
 Location: Sec. 13 Twp. 4s Rge. 22w Co. Norton State Ks

Interval Tested 3438-3466 Zone Tested LKC "C"  
 Anchor Length 22' Drill Pipe Run 3330 Mud Wt. 8.8  
 Top Packer Depth 3434 Drill Collars Run 120 Vis 62  
 Bottom Packer Depth 3438 Wt. Pipe Run 6 WL 6.4  
 Total Depth 3460 Chlorides 1200 ppm System LCM 1  
 Blow Description IF: Surface blow built to 1/8"  
IS: NO Return  
FF: NO Blow  
FS: NO Return

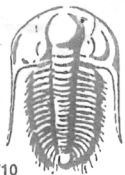
Rec	Feet of	%gas	%oil	%water	%mud
<u>10</u>	<u>OSM</u>		<u>2</u>	<u>98</u>	
Rec	Feet of	%gas	%oil	%water	%mud
Rec	Feet of	%gas	%oil	%water	%mud
Rec	Feet of	%gas	%oil	%water	%mud
Rec	Feet of	%gas	%oil	%water	%mud

Rec Total 10' BHT 96 Gravity — API RW — @ — °F Chlorides — ppm

(A) Initial Hydrostatic 1704  Test 1125 T-On Location 2:10 PM  
 (B) First Initial Flow 11  Jars — T-Started 2:40 PM  
 (C) First Final Flow 16  Safety Joint — T-Open 4:30 PM  
 (D) Initial Shut-In 738  Circ Sub N/K T-Pulled 6:30 PM  
 (E) Second Initial Flow 24  Hourly Standby — T-Out 7:53 PM  
 (F) Second Final Flow 20  Mileage 102 RT 142.80 Comments —  
 (G) Final Shut-In 450  Sampler —  
 (H) Final Hydrostatic 1763  Straddle —  Ruined Shale Packer —  
 Shale Packer —  Ruined Packer —  
 Extra Packer —  Extra Copies —  
 Extra Recorder — Sub Total 8  
 Day Standby — Total 1247.80  
 Accessibility — MP/DST Disc't —  
 Sub Total 1267.80

Approved By Richard Bell Our Representative [Signature]

Trilobite Testing Inc. shall not be liable for damaged of any kind of the property or personnel of the one for whom a test is made, or for any loss suffered or sustained, directly or indirectly, through the use of its equipment, or its statements or opinion concerning the results of any test, tools lost or damaged in the hole shall be paid for at cost by the party for whom the test is made.



# TRILOBITE TESTING INC.

P.O. Box 1733 • Hays, Kansas 67601

RECEIVED  
MAY 26 2011  
BY:

## Test Ticket

NO. 041109

4/10

Well Name & No. Hansen Foundation # 1-13 Test No. 2 Date 5/18/2011  
 Company Baird O. Co., LLC. Elevation 2213 KB 2208 GL  
 Address 113 W. Main / P.O. Box 428 Logan KS 67646  
 Co. Rep / Geo. Richard Bell Rig WW #8  
 Location: Sec. 13 Twp. 4s Rge. 22w Co. Norton State KS

Interval Tested 3459 - 3478 Zone Tested LKC "D"  
 Anchor Length 19' Drill Pipe Run 3331 Mud Wt. 8.8  
 Top Packer Depth 3455 Drill Collars Run 120' Vis 62  
 Bottom Packer Depth 3459 Wt. Pipe Run Ø WL 6.4  
 Total Depth 3478 Chlorides 1200 ppm System LCM 1  
 Blow Description IF: Surface blow built to 3/4" then dia'd back to 1/2"  
IS: No Return  
FF: No Blow - Flushed tool @ 15 min - NO Blow  
FS: No Return

Rec	Feet of	%gas	%oil	%water	%mud
<u>15</u>	<u>OCM</u>	<u>5</u>		<u>95</u>	
Rec	Feet of	%gas	%oil	%water	%mud
Rec	Feet of	%gas	%oil	%water	%mud
Rec	Feet of	%gas	%oil	%water	%mud
Rec	Feet of	%gas	%oil	%water	%mud

Rec Total 15 BHT \_\_\_\_\_ Gravity \_\_\_\_\_ API RW \_\_\_\_\_ @ \_\_\_\_\_ °F Chlorides \_\_\_\_\_ ppm

(A) Initial Hydrostatic 1724  
 (B) First Initial Flow 13  
 (C) First Final Flow 17  
 (D) Initial Shut-In 387  
 (E) Second Initial Flow 21  
 (F) Second Final Flow 23  
 (G) Final Shut-In 283  
 (H) Final Hydrostatic 1696

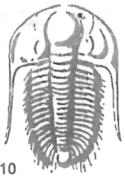
Test 1125'  
 Jars \_\_\_\_\_  
 Safety Joint \_\_\_\_\_  
 Circ Sub N/C  
 Hourly Standby \_\_\_\_\_  
 Mileage 66 RT 92.40  
 Sampler \_\_\_\_\_  
 Straddle \_\_\_\_\_  
 Shale Packer \_\_\_\_\_  
 Extra Packer \_\_\_\_\_  
 Extra Recorder \_\_\_\_\_  
 Day Standby \_\_\_\_\_  
 Accessibility \_\_\_\_\_  
 Sub Total 1217.40

T-On Location 1:05 AM  
 T-Started 1:42 AM  
 T-Open 3:57 AM  
 T-Pulled 6:21 AM  
 T-Out 7:41 AM  
 Comments \_\_\_\_\_  
 Ruined Shale Packer \_\_\_\_\_  
 Ruined Packer \_\_\_\_\_  
 Extra Copies \_\_\_\_\_  
 Sub Total Ø  
 Total 1217.40  
 MP/DST Disc't \_\_\_\_\_

Initial Open 30  
 Initial Shut-In 45  
 Final Flow 30  
 Final Shut-In 45

Approved By Richard Bell

Our Representative [Signature]



# TRILOBITE TESTING INC.

P.O. Box 1733 • Hays, Kansas 67601

RECEIVED  
MAY 26 2011  
BY: \_\_\_\_\_

## Test Ticket

NO. 041110

Well Name & No. Hansen Foundation #1-13 Test No. 3 Date 5/18/11  
 Company Burd Oil Co., LLC Elevation 2213 KB 2208 GL  
 Address 113 W. Main / P.O. Box 428 Logan, KS 67646  
 Co. Rep / Geo. Richard Bell Rig LCW #8  
 Location: Sec. 13 Twp. 4s Rge. 22W Co. Norton State KS

Interval Tested 3475-3499 Zone Tested L/KC "E/F"  
 Anchor Length 24' Drill Pipe Run 3361 Mud Wt. 9.3  
 Top Packer Depth 3471 Drill Collars Run 120' Vis 52  
 Bottom Packer Depth 3475 Wt. Pipe Run 6 WL 6.4  
 Total Depth 3499 Chlorides 1,700 ppm System LCM 1  
 Blow Description IF: BoB in 16 min.  
IS: NO Return  
FF: BoB in 22 min  
FS: NO Return

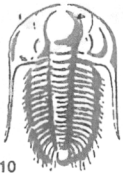
Rec	Feet of	%gas (spots)	%oil	%water	%mud
<u>296</u>	<u>OSMW</u>		<u>90</u>	<u>10</u>	
<u>50</u>	<u>OSMW</u>		<u>85</u>	<u>15</u>	
<u>10</u>	<u>OSM (heavy mud)</u>			<u>100</u>	
Rec	Feet of	%gas	%oil	%water	%mud
Rec	Feet of	%gas	%oil	%water	%mud

Rec Total 356 BHT 99° Gravity — API RW .22 @ 58° F Chlorides 15,500 ppm

(A) Initial Hydrostatic 1726  Test 1125' T-On Location 1:25 PM  
 (B) First Initial Flow 15  Jars T-Started 1:43 PM  
 (C) First Final Flow 119  Safety Joint T-Open 3:20 PM  
 (D) Initial Shut-In 1260  Circ Sub N/C T-Pulled 5:20 PM  
 (E) Second Initial Flow 121  Hourly Standby T-Out 7:13 PM  
 (F) Second Final Flow 185  Mileage 66RT 92.40 Comments Show of free oil  
 (G) Final Shut-In 1259  Sampler at first wet connection  
 (H) Final Hydrostatic 1730  Straddle  Ruined Shale Packer  
 Shale Packer  Ruined Packer  
 Extra Packer  Extra Copies  
 Initial Open 30  Extra Recorder Sub Total 8  
 Initial Shut-In 30  Day Standby Total 1217.40  
 Final Flow 30  Accessibility MP/DST Disc't  
 Final Shut-In 30 Sub Total 1217.40

Approved By Richard Bell Our Representative [Signature]

TriLOBITE Testing Inc. shall not be liable for damaged of any kind of the property or personnel of the one for whom a test is made, or for any loss suffered or sustained, directly or indirectly, through the use of its equipment, or its statements or opinion concerning the results of any test, tools lost or damaged in the hole shall be paid for at cost by the party for whom the test is made.



# TRILOBITE TESTING INC.

P.O. Box 1733 • Hays, Kansas 67601

RECEIVED  
MAY 26 2011  
BY: \_\_\_\_\_

## Test Ticket

NO. 041111

Well Name & No. Hansen Foundation #1-13 Test No. 4 Date 5/19/11  
 Company Baird Oil Co., LLC. Elevation 2213 KB 2208 GL  
 Address 113 W. Main / P.O. Box 428 Logan, KS 67646  
 Co. Rep / Geo. Richard Bell Rig LW #8  
 Location: Sec. 13 Twp. 4s Rge. 22w Co. Norton State KS

Interval Tested 3651-3679 Zone Tested Arbuskie  
 Anchor Length 28' Drill Pipe Run 3542 Mud Wt. 9.2  
 Top Packer Depth 3647 Drill Collars Run 120' Vis 62  
 Bottom Packer Depth 3651 Wt. Pipe Run 0 WL 6.4  
 Total Depth 3679 Chlorides 1700 ppm System LCM 2

Blow Description IF  
IS  
FF Packer Failure  
FS

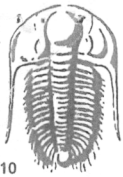
Rec	Feet of	%gas	%oil	%water	%mud
<u>306</u>	<u>mud</u>			<u>100</u>	
Rec	Feet of	%gas	%oil	%water	%mud
Rec	Feet of	%gas	%oil	%water	%mud
Rec	Feet of	%gas	%oil	%water	%mud
Rec	Feet of	%gas	%oil	%water	%mud

Rec Total 306 BHT \_\_\_\_\_ Gravity \_\_\_\_\_ API RW \_\_\_\_\_ @ \_\_\_\_\_ °F Chlorides \_\_\_\_\_ ppm

(A) Initial Hydrostatic 1834  Test 925' T-On Location 1:15 PM  
 (B) First Initial Flow 16  Jars \_\_\_\_\_ T-Started 1:24 PM  
 (C) First Final Flow \_\_\_\_\_  Safety Joint \_\_\_\_\_ T-Open 3:15 PM  
 (D) Initial Shut-In \_\_\_\_\_  Circ Sub N/C T-Pulled 3:25 PM 3:20  
 (E) Second Initial Flow \_\_\_\_\_  Hourly Standby \_\_\_\_\_ T-Out 5:20 PM  
 (F) Second Final Flow \_\_\_\_\_  Mileage 92 RT 128.80 Comments Packer Failure  
 (G) Final Shut-In \_\_\_\_\_  Sampler \_\_\_\_\_ tripped out to log  
 (H) Final Hydrostatic 1850  Straddle \_\_\_\_\_  Ruined Shale Packer \_\_\_\_\_  
 Ruined Packer 260'  
 Extra Packer \_\_\_\_\_  Extra Copies \_\_\_\_\_  
 Initial Open \_\_\_\_\_  Extra Recorder \_\_\_\_\_ Sub Total 260'  
 Initial Shut-In \_\_\_\_\_  Day Standby \_\_\_\_\_ Total 1313.80  
 Final Flow \_\_\_\_\_  Accessibility \_\_\_\_\_ MP/DST Disc't \_\_\_\_\_  
 Final Shut-In \_\_\_\_\_ Sub Total 1053.80

Approved By \_\_\_\_\_ Our Representative [Signature]

Trilobite Testing Inc. shall not be liable for damaged of any kind of the property or personnel of the one for whom a test is made, or for any loss suffered or sustained, directly or indirectly, through the use of its equipment, or its statements or opinion concerning the results of any test, tools lost or damaged in the hole shall be paid for at cost by the party for whom the test is made.



# TRILOBITE TESTING INC.

P.O. Box 1733 • Hays, Kansas 67601

RECEIVED  
MAY 26 2011

## Test Ticket

NO. 041112

Well Name & No. Hansen Fountain # 1-13 Test No. 5 Date 5/19/11  
 Company Baird Oil Co., LLC. Elevation 2213 KB 2208 GL  
 Address 113 W Main / P.O. Box 428 Logan, KS. 67646  
 Co. Rep / Geo. Richard Bell Rig W6 #8  
 Location: Sec. 13 Twp. 4s Rge. 22w Co. Norton State KS

Interval Tested 3608-3679 Zone Tested Arbuckie  
 Anchor Length 71' Drill Pipe Run 3480 Mud Wt. 9.2  
 Top Packer Depth 3604 Drill Collars Run 120' Vis 62  
 Bottom Packer Depth 3608 Wt. Pipe Run Ø WL 6.4  
 Total Depth 3679 Chlorides 5700 ppm System LCM 2  
 Blow Description IF: Blow built to 2"  
IS: Weak surface return started @ 10 min. Died @ 20 min  
FF  
FS

Rec	Feet of	%gas	%oil	%water	%mud
<del>56</del> 56	OCM	10		90	
Rec	Feet of	%gas	%oil	%water	%mud
Rec	Feet of	%gas	%oil	%water	%mud
Rec	Feet of	%gas	%oil	%water	%mud
Rec	Feet of	%gas	%oil	%water	%mud

Rec Total ~~50~~ 50 BHT 97 Gravity — API RW — @ — °F Chlorides — ppm

(A) Initial Hydrostatic 1817  Test 1125' T-On Location 1:15 PM  
 (B) First Initial Flow 17  Jars — T-Started 5:48 PM  
 (C) First Final Flow 36  Safety Joint — T-Open 7:20 PM  
 (D) Initial Shut-In 419  Circ Sub N/L T-Pulled 8:20 PM  
 (E) Second Initial Flow —  Hourly Standby 1/2 hr 25' T-Out 10:32 PM  
 (F) Second Final Flow —  Mileage N/L Comments —  
 (G) Final Shut-In —  Sampler —  
 (H) Final Hydrostatic 1782  Straddle —  Ruined Shale Packer —  
 Shale Packer —  Ruined Packer —  
 Extra Packer —  Extra Copies —  
 Extra Recorder — Sub Total Ø  
 Day Standby — Total 1150'  
 Accessibility — MP/DST Disc't —  
 Sub Total 1150'

Approved By Richard Bell Our Representative [Signature]

Trilobite Testing Inc. shall not be liable for damaged of any kind of the property or personnel of the one for whom a test is made, or for any loss suffered or sustained, directly or indirectly, through the use of its equipment, or its statements or opinion concerning the results of any test, tools lost or damaged in the hole shall be paid for at cost by the party for whom the test is made.