

15-153-20809

ORIGINAL

CONFIDENTIAL

DRILL-STEM TEST DATA

RELEASED

Computer inventoried

APR 27 1999

Well Name:

Ruth Birney Trust #1

Company :

Ritchie Exploration, Inc

Location - Sec:

29

Twp:

5s

County:

Rawlins Cty

State:

Ks

Date:

9-28-95

FROM CONFIDENTIAL
Rge: 36w

KCC

KCC

OCT 19 95

CONFIDENTIAL

CONFIDENTIAL

29-5s-36w

CONFIDENTIAL

TRILOBITE TESTING L.L.C.

ORIGINAL

OPERATOR : Ritchie Exploration, Inc
WELL NAME: Ruth Birney Trust #1
LOCATION : 29-5s-36w
INTERVAL : 4340.00 To 4400.00 m.

DATE 9-24-95
KB 3362.00 m. TICKET NO: 7999 DST #1
GR 0.00 m. FORMATION: L/KC 'G&H'
TD 4400.00 m. TEST TYPE: CONVENTIONAL

RECORDER DATA

Table with columns: Mins, Field, 1, 2, 3, 4, TIME DATA. Rows include PF 30 Rec., SI 30 Range(kPa), SF 30 Clock(hrs), FS 30 Depth(m).

Table with columns: A-G, Field, 1, 2, 3, 4, TOOL DATA. Rows include Init Hydro, First Flow, Final Flow, In Shut-in, Init Flow, Final Flow, Fl Shut-in, Final Hydro, Inside/Outside.

RECOVERY

Tot Fluid 970.00 m. of 0.00 m. in DC and 970.00 m. in DP
225.00 m. of Muddy Water, 60%water - 40%mud
0.00 m. of
745.00 m. of Sulfer Water, 100% water
0.00 m. of
0.00 m. of
0.00 m. of
0.00 m. of
SALINITY 20000.00 P.P.M. A.P.I. Gravity 0.00

BLOW DESCRIPTION

Initial Blow -
Fair to strong blow off bottom in
11 minutes

Initial Shutin -
Bled off blow - no return

Final Blow -
Weak to fair blow off bottom in 13
minutes

Final Shutin -
Bled off blow - no return
Mechanical failure on both recorders

SAMPLES:
SENT TO:

KCC
JUL 30
CONFIDENTIAL

RELEASED

APR 27 1999

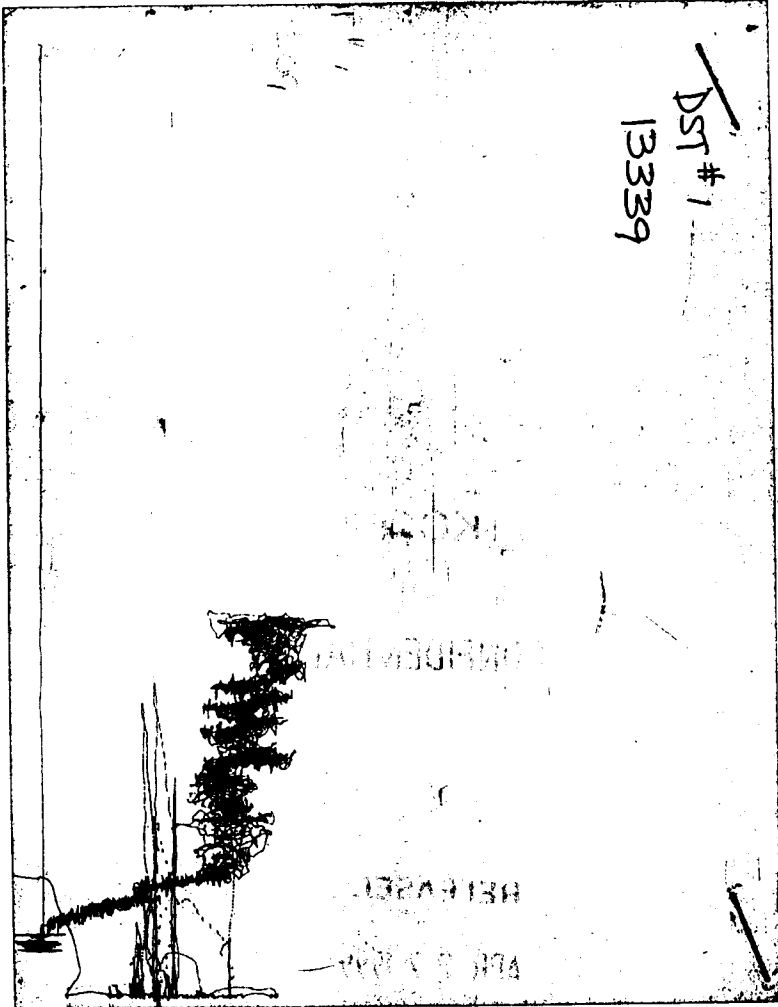
FROM CONFIDENTIAL

MUD DATA table with columns: Mud Type, Chemical, Weight, Vis., W.L., F.C., Mud Drop, Amt. of fill, Btm. H. Temp., Hole Condition, % Porosity, Packer Size, No. of Packers, Cushion Amt., Cushion Type, Reversed Out, Tool Chased, Tester, Co. Rep., Contr., Rig #, Unit #, Pump T.

Test Successful: N

ORIGINAL

CHART PAGE



This is an actual photograph of recorder chart

TRILOBITE TESTING L.L.C.

OPERATOR : Ritchie Exploration, Inc
 WELL NAME: Ruth Birney Trust #1
 LOCATION : 29-5s-36w
 INTERVAL : 4393.00 To 4452.00 m.

DATE 9-25-95

KB 3362.00 m. TICKET NO: 8000 DST #2
 GR 0.00 m. FORMATION: L/KC "J"
 TD 4452.00 m. TEST TYPE: CONVENTIONAL

RECORDER DATA

Mins		Field	1	2	3	4	TIME DATA-----
PF 30	Rec.	13339	13339	13309			PF Fr. 0430 to 0500 hr
SI 45	Range(kPa)	4025.0	4025.0	4700.0	0.0	0.0	IS Fr. 0500 to 0545 hr
SF 30	Clock(hrs)	23832	23832	23934			SF Fr. 0545 to 0615 hr
FS 45	Depth(m.)	4412.0	4412.0	4447.0	0.0	0.0	FS Fr. 0615 to 0700 hr

	Field	1	2	3	4	
A. Init Hydro	2242.0	2213.0	0.0	0.0	0.0	T STARTED hr
B. First Flow	47.0	31.0	0.0	0.0	0.0	T ON BOTM hr
B1. Final Flow	47.0	31.0	0.0	0.0	0.0	T OPEN 0430 hr
C. In Shut-in	1181.0	1160.0	0.0	0.0	0.0	T PULLED 0700 hr
D. Init Flow	52.0	31.0	0.0	0.0	0.0	T OUT hr
E. Final Flow	52.0	31.0	0.0	0.0	0.0	
F. Fl Shut-in	1011.0	989.0	0.0	0.0	0.0	TOOL DATA-----
G. Final Hydro	2236.0	2173.0	0.0	0.0	0.0	Tool Wt. 0.00 daN
Inside/Outside	0	0	I			Wt Set On Packer 0.00 daN
						Wt Pulled Loose 0.00 daN
						Initial Str Wt 0.00 daN
						Unseated Str Wt 0.00 daN
						Bot Choke 0.75 mm
						Hole Size 7.88 mm
						D Col. ID 0.00 mm
						D. Pipe ID 0.00 mm
						D.C. Length 0.00 m.
						D.P. Length 0.00 m.

RECOVERY

Tot Fluid 25.00 m. of 0.00 m. in DC and 0.00 m. in DP
 25.00 m. of Slightly oil cut mud 1% oil - 99% mud
 0.00 m. of
 0.00 m. of
 0.00 m. of
 0.00 m. of
 0.00 m. of
 0.00 m. of
 0.00 m. of
 SALINITY 0.00 P.P.M. A.P.I. Gravity 0.00

BLOW DESCRIPTION

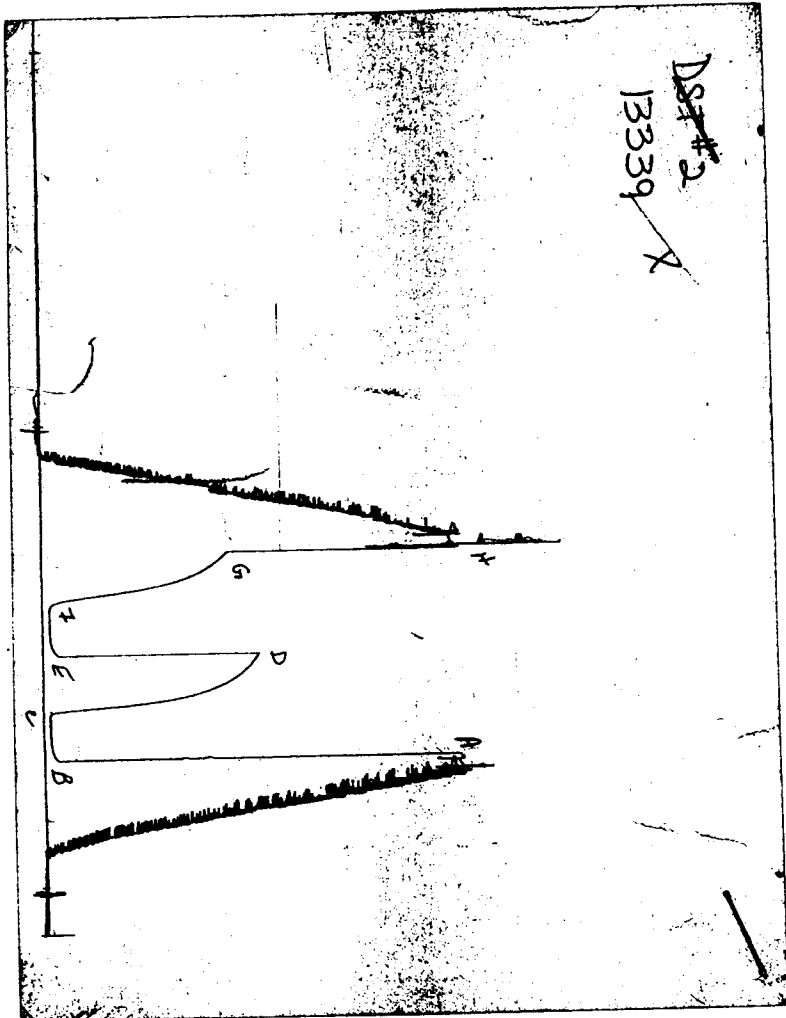
Initial Blow -
 Weak 1/4" blow built to 1/2" in
 5 minutes - decreased back to surface
 Final Blow -
 No return blow

SAMPLES:
 SENT TO:

MUD DATA-----
 Mud Type Chemical
 Weight 9.30 kg/m3
 Vis. 48.00 S/L
 W.L. 10.60 cm3
 F.C. 0.00 mm
 Mud Drop
 Amt. of fill 0.00 m.
 Btm. H. Temp. 1180.00 C
 Hole Condition
 % Porosity 0.00
 Packer Size 6.75 mm
 No. of Packers 2
 Cushion Amt. 0.00
 Cushion Type
 Reversed Out
 Tool Chased
 Tester Rod Steinbrink
 Co. Rep. Jeff Christian
 Contr. White & Ellis
 Rig # 9
 Unit #
 Pump T.

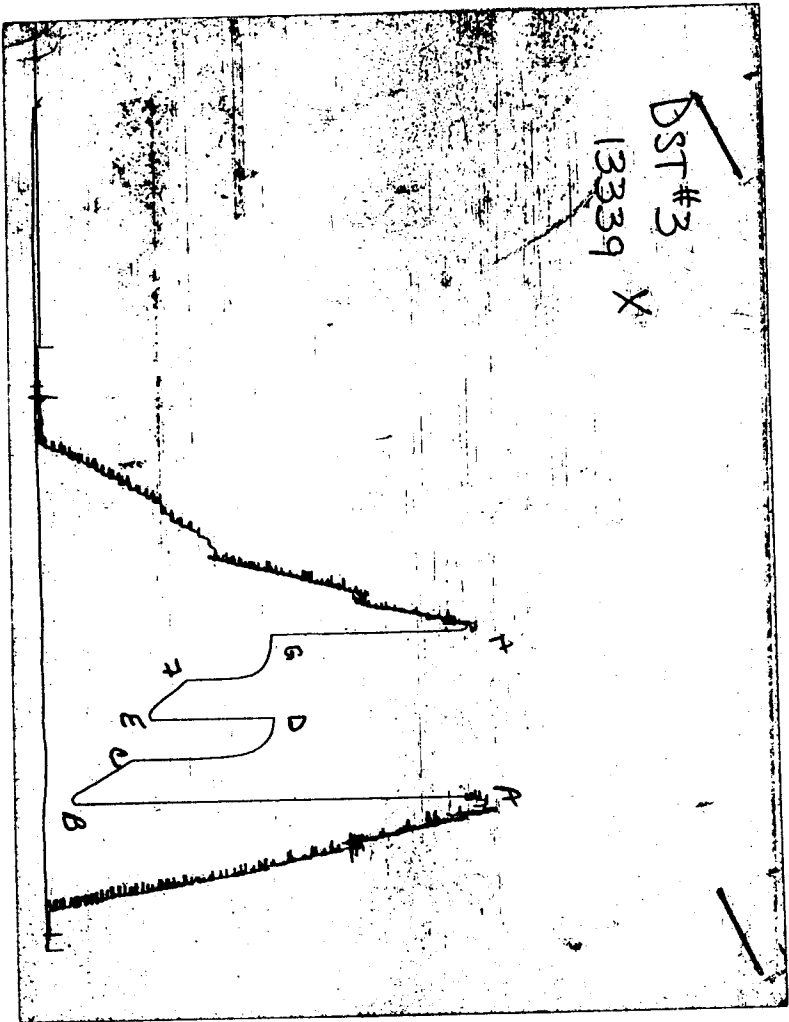
Test Successful: Y

CHART PAGE



This is an actual photograph of recorder chart

CHART PAGE



This is an actual photograph of recorder chart

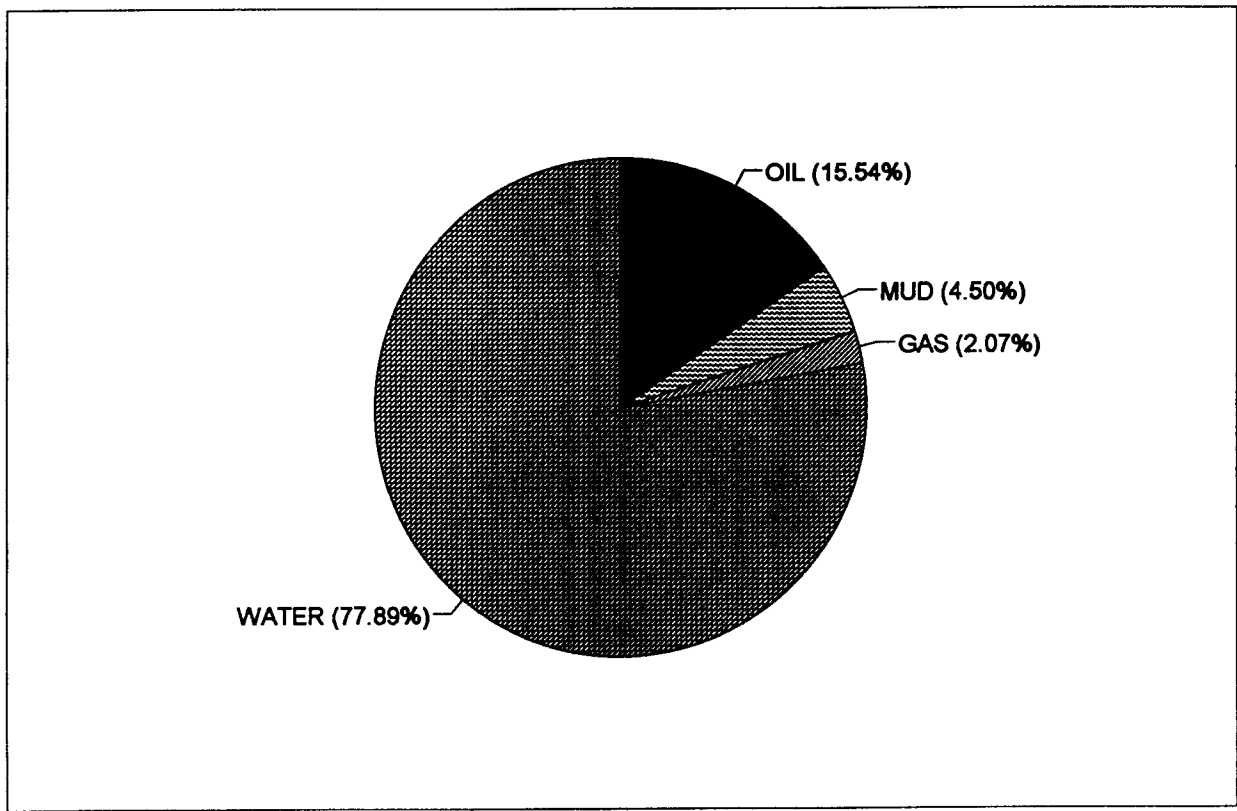
CALCULATED RECOVERY ANALYSIS DRILL PIPE

DST # 3

TICKET # 8076

SAMPLE #	TOTAL FEET	GAS		OIL		WATER		MUD	
		%	FEET	%	FEET	%	FEET	%	FEET
1	185	10	18.5	85	157.25		0	5	9.25
2	120	10	12	50	60		0	40	48
3	180		0	3	5.4		0	5	9
4	600		0	1	6	92	552		0
5	600		0		0	99	594		0
6			0		0	100	0		0
TOTAL	1685	1.81	30.5	13.57	228.65	68.01187	1146	3.93	66.25

			HRS OPEN	BBL/DAY
BBL OIL=	3.251403	*	1.00	78.03
BBL WATER=	16.29612	*		391.11
BBL MUD=	0.942075			
BBL GAS	0.43371			



TRILOBITE TESTING L.L.C.

OPERATOR : Ritchie Exploration, Inc
 WELL NAME: Ruth Birney Trust #1
 LOCATION : 29-5s-36w
 INTERVAL : 4591.00 To 4601.00 m.

DATE 9-26-95
 KB 3362.00 m. TICKET NO: 8077 DST #4
 GR 0.00 m. FORMATION: Altamont "B"
 TD 4601.00 m. TEST TYPE: CONVENTIONAL

RECORDER DATA

Mins		Field	1	2	3	4	TIME DATA-----
PF 30	Rec.		13309	13309	13339		PF Fr. 1420 to 1450 hr
SI 30	Range(kPa)	4700.0	4700.0	4025.0	0.0	0.0	IS Fr. 1450 to 1520 hr
SF 30	Clock(hrs)	23934	23934	23832			SF Fr. 1520 to 1550 hr
FS 30	Depth(m.)	4596.0	4596.0	4592.0	0.0	0.0	FS Fr. 1550 to 1620 hr

	Field	1	2	3	4	
A. Init Hydro	1972.0	1983.0	0.0	0.0	0.0	T STARTED hr
B. First Flow	10.0	17.0	0.0	0.0	0.0	T ON BOTM hr
B1. Final Flow	10.0	17.0	0.0	0.0	0.0	T OPEN 1420 hr
C. In Shut-in	20.0	25.0	0.0	0.0	0.0	T PULLED 1620 hr
D. Init Flow	10.0	17.0	0.0	0.0	0.0	T OUT hr
E. Final Flow	10.0	17.0	0.0	0.0	0.0	
F. Fl Shut-in	10.0	17.0	0.0	0.0	0.0	
G. Final Hydro	1922.0	1943.0	0.0	0.0	0.0	TOOL DATA-----
Inside/Outside	0	0	I			Tool Wt. 0.00 daN
						Wt Set On Packer 0.00 daN
						Wt Pulled Loose 0.00 daN
						Initial Str Wt 0.00 daN
						Unseated Str Wt 0.00 daN
						Bot Choke 0.75 mm
						Hole Size 7.88 mm
						D Col. ID 0.00 mm
						D. Pipe ID 0.00 mm
						D.C. Length 0.00 m.
						D.P. Length 0.00 m.

RECOVERY

Tot Fluid 1.00 m. of 0.00 m. in DC and 0.00 m. in DP
 1.00 m. of Drilling Mud
 0.00 m. of
 0.00 m. of
 0.00 m. of
 0.00 m. of
 0.00 m. of
 0.00 m. of
 0.00 m. of

SALINITY 0.00 P.P.M. A.P.I. Gravity 0.00

BLOW DESCRIPTION

Initial Blow -
 Weak blow died in 5 minutes

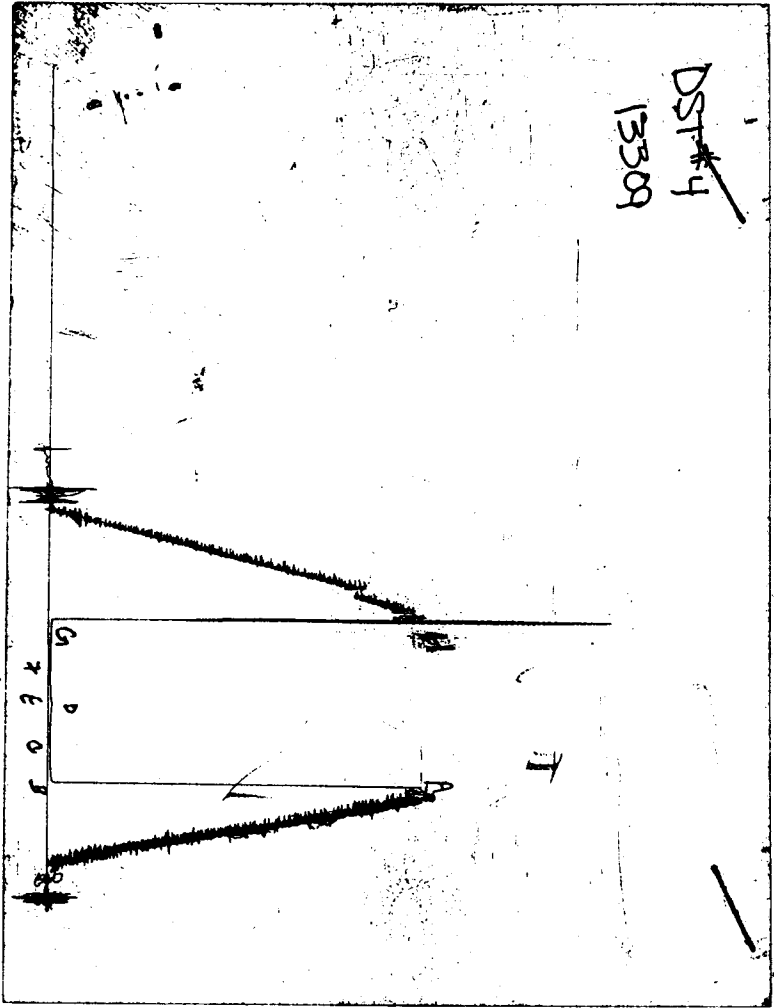
Final Blow -
 No return blow

SAMPLES:
 SENT TO:

MUD DATA-----
 Mud Type Chemical
 Weight 9.40 kg/m3
 Vis. 47.00 S/L
 W.L. 11.00 cm3
 F.C. 0.00 mm
 Mud Drop
 Amt. of fill 0.00 m.
 Btm. H. Temp. 120.00 C
 Hole Condition
 % Porosity 0.00
 Packer Size 6.75 mm
 No. of Packers 2
 Cushion Amt. 0.00
 Cushion Type
 Reversed Out
 Tool Chased
 Tester Rod Steinbrink
 Co. Rep. Jeff Christian
 Contr. White & Ellis
 Rig # 9
 Unit #
 Pump T.

Test Successful: Y

CHART PAGE



This is an actual photograph of recorder chart