

15-135-20833

29-5s-36w

### DIAMOND TESTING

P.O. Box 157

HOISINGTON, KANSAS 67544

(620) 653-7550 • (800) 542-7313

STC 21108.D190

Page 1 of 2 Pages

Company L. D. Drilling, Inc. Lease & Well No. Briney "D" No. 1  
 Elevation 3374KB Formation Altamont "B" Effective Pay -- Ft. Ticket No. J1778  
 Date 11-26-05 Sec. 29 Twp. 5S Range 36W County Rawlins State Kansas  
 Test Approved By Kim Shoemaker Diamond Representative John C. Riedl

Formation Test No. 1 Interval Tested from 4,527 ft. to 4,580 ft. Total Depth 4,580 ft.

Packer Depth 4,522 ft. Size 6 3/4 in. Packer Depth -- ft. Size -- in.

Packer Depth 4,527 ft. Size 6 3/4 in. Packer Depth -- ft. Size -- in.

Depth of Selective Zone Set          ft.

Top Recorder Depth (Inside) 4,530 ft. Recorder Number 21108 Cap. 5,000 psi

Bottom Recorder Depth (Outside) 4,577 ft. Recorder Number 11017 Cap. 4,000 psi

Below Straddle Recorder Depth          ft. Recorder Number          Cap.          psi

Drilling Contractor L. D. Drilling, Inc. - Rig 1 Drill Collar Length -- ft. I.D. -- in.

Mud Type Chemical Viscosity 48 Weight Pipe Length -- ft. I.D. -- in.

Weight 9.4 Water Loss 8.8 cc. Drill Pipe Length 4,507 ft. I.D. 3 1/2 in.

Chlorides 3,000 P.P.M. Test Tool Length 20 ft. Tool Size 3 1/2 IF in.

Jars: Make Bowen Serial Number Not Run Anchor Length 53 ft. Size 4 1/2 - FH in.

Did Well Flow? No Reversed Out No Surface Choke Size 1 in. Bottom Choke Size 5/8 in.

Main Hole Size 7 7/8 in. Tool Joint Size 4 1/2 - XH in.

Blow: 1st Open: Weak blow. Slowly building to 2 ins.

2nd Open: Weak, 1/2 in., blow decreasing to 1/4 in.

Recovered 40 ft. of gas in pipe

Recovered 20 ft. of oil cut mud = .205200 bbls. (Grind out: 10%-oil; 90%-mud)

Recovered 20 ft. of TOTAL FLUID = .205200 bbls.

Recovered          ft. of         

Recovered          ft. of         

Remarks         

Time Set Packer(s) 6:55 <sup>AM</sup> P.M. Time Started Off Bottom 9:55 <sup>AM</sup> P.M. Maximum Temperature 132°

Initial Hydrostatic Pressure ..... (A) 2238 P.S.I.

Initial Flow Period ..... Minutes 30 (B) 30 P.S.I. to (C) 30 P.S.I.

Initial Closed In Period ..... Minutes 45 (D) 122 P.S.I.

Final Flow Period ..... Minutes 45 (E) 35 P.S.I. to (F) 37 P.S.I.

Final Closed In Period ..... Minutes 60 (G) 193 P.S.I.

Final Hydrostatic Pressure ..... (H) 2217 P.S.I.

## GENERAL INFORMATION

### Client Information:

Company: L D DRILLING INC.

Contact: L D DAVIS

Phone: Fax: e-mail:

### Site Information:

Contact: KIM SHOEMAKER

Phone: Fax: e-mail:

### Well Information:

Name: BRINEY "D" #1

Operator: L D DRILLING INC.

Location-Downhole: DST #1 4527 TO 4580

Location-Surface: S29/5S/36W RAWLINS COUNTY

### Test Information:

Company: DIAMOND TESTING

Representative: JOHN RIEDL

Supervisor: KIM SHOEMAKER

Test Type: CONVENTIONAL Job Number: D190

Test Unit: 2

Start Date: 2005/11/27 Start Time: 16:30:00

End Date: 2005/11/27 End Time: 23:59:00

Report Date: 2005/11/28 Prepared By: JOHN RIEDL

Qualified By: KIM SHOEMAKER

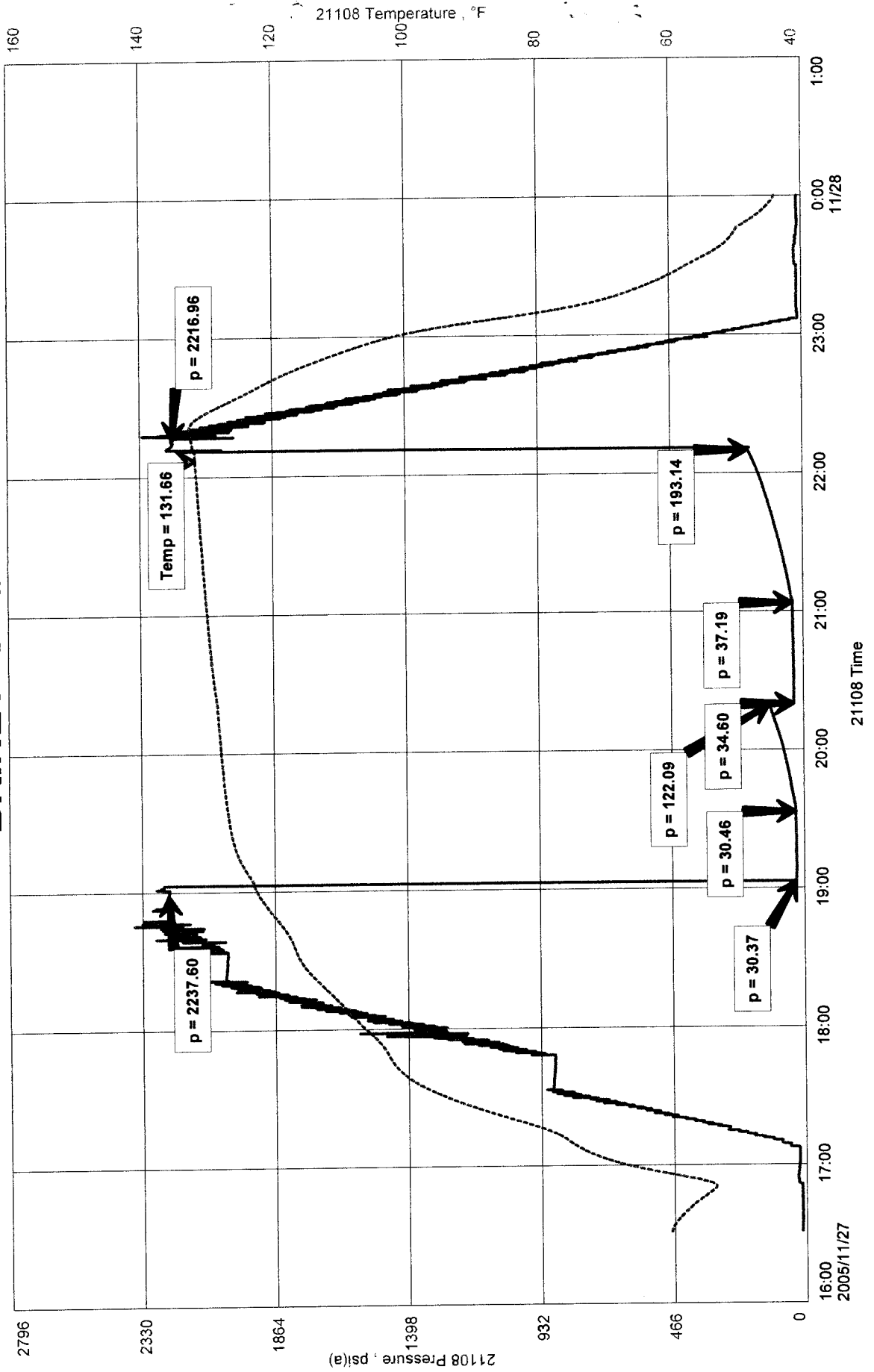
### Remarks:

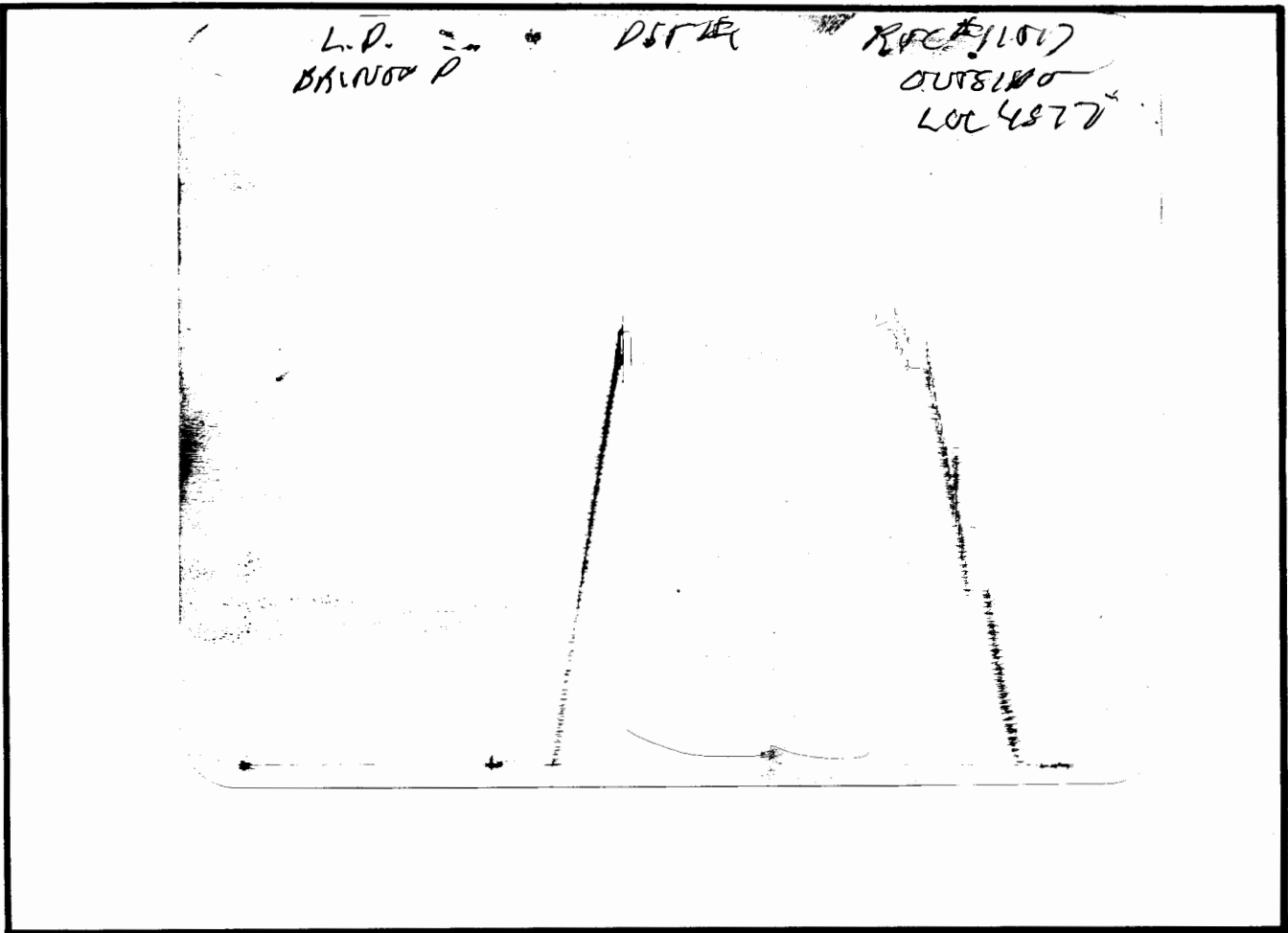
REC: 40' GAS IN PIPE  
20' OCM (10%OIL 90%MUD)

BRINEY "D" #1  
 Formation: ALTAMONT "B"  
 Job Number: D190

L D DRILLING INC.  
 DST #1 4527 TO 4580  
 Start Test Date: 2005/11/27  
 Final Test Date: 2005/11/27

# BRINEY "D" #1





This is an actual photograph of recorder chart.

POINT	PRESSURE		Elec. Office Reading	PSI
	Field Reading			
(A) Initial Hydrostatic Mud .....	2238	2238		PSI
(B) First Initial Flow Pressure.....	30	30		PSI
(C) First Final Flow Pressure .....	30	30		PSI
(D) Initial Closed-in Pressure .....	122	122		PSI
(E) Second Initial Flow Pressure.....	35	35		PSI
(F) Second Final Flow Pressure.....	37	37		PSI
(G) Final Closed-in Pressure.....	193	193		PSI
(H) Final Hydrostatic Mud .....	2217	2217		PSI



**DIAMOND TESTING**  
P.O. Box 157  
**HOISINGTON, KANSAS 67544**  
(620) 653-7550 • (800) 542-7313  
STC 21083.D186

Company L. D. Drilling, Inc. Lease & Well No. Briney "D" No. 1  
Elevation 3374KB Formation Altamont "C" Effective Pay 5 Ft. Ticket No. J1779  
Date 11-29-05 Sec. 29 Twp. 5S Range 36W County Rawlins State Kansas  
Test Approved By Kim Shoemaker Diamond Representative John C. Riedl

Formation Test No. 2 Interval Tested from 4,576 ft. to 4,602 ft. Total Depth 4,602 ft.  
Packer Depth 4,571 ft. Size 6 3/4 in. Packer Depth -- ft. Size -- in.  
Packer Depth 4,576 ft. Size 6 3/4 in. Packer Depth -- ft. Size -- in.  
Depth of Selective Zone Set          ft.

Top Recorder Depth (Inside) 4,579 ft. Recorder Number 21083 Cap. 5,000 psi  
Bottom Recorder Depth (Outside) 4,599 ft. Recorder Number 11017 Cap. 4,000 psi  
Below Straddle Recorder Depth          ft. Recorder Number          Cap.          psi

Drilling Contractor L. D. Drilling, Inc. - Rig 1 Drill Collar Length -- ft. I.D. -- in.  
Mud Type Chemical Viscosity 44 Weight Pipe Length -- ft. I.D. -- in.  
Weight 9.2 Water Loss 8.0 cc. Drill Pipe Length 4,556 ft. I.D. 3 1/2 in.  
Chlorides 3,000 P.P.M. Test Tool Length 20 ft. Tool Size 3 1/2 IF in.  
Jars: Make Bowen Serial Number Not Run Anchor Length 26 ft. Size 4 1/2 - FH in.  
Did Well Flow? No Reversed Out No Surface Choke Size 1 in. Bottom Choke Size 5/8 in.  
Main Hole Size 7 7/8 in. Tool Joint Size 4 1/2 - XH in.

Blow: 1st Open: Weak, 1 1/2 in., blow. Decreasing to 1/2 in. Slid tool 20 ft. to bottom; lost mud in process.  
2nd Open: Weak blow. Dead in 3 mins. Flushed tool & received short surge.

Recovered 100 ft. of slightly oil cut mud = 1.026000 bbls. (Grind out: 5%-oil; 95%-mud)  
Recovered          ft. of           
Recovered          ft. of           
Recovered          ft. of           
Recovered          ft. of           
Remarks Tool Sample Grind Out: heavy oil cut mud

Time Set Packer(s) 12:55 A.M. Time Started Off Bottom 3:55 A.M. Maximum Temperature 124°  
Initial Hydrostatic Pressure ..... (A) 2224 P.S.I.  
Initial Flow Period ..... Minutes 30 (B) 71 P.S.I. to (C) 72 P.S.I.  
Initial Closed In Period ..... Minutes 45 (D) 448 P.S.I.  
Final Flow Period ..... Minutes 45 (E) 72 P.S.I. to (F) 73 P.S.I.  
Final Closed In Period ..... Minutes 60 (G) 426 P.S.I.  
Final Hydrostatic Pressure ..... (H) 2202 P.S.I.

## GENERAL INFORMATION

### Client Information:

Company: L D DRILLING INC.

Contact: L D DAVIS

Phone: Fax: e-mail:

### Site Information:

Contact: KIM SHOEMAKER

Phone: Fax: e-mail:

### Well Information:

Name: BRINEY "D" #1

Operator: L D DRILLING INC.

Location-Downhole: DST #2 4576 TO 4602

Location-Surface: S29/5S/36W RAWLINS COUNTY

### Test Information:

Company: DIAMOND TESTING

Representative: JOHN RIEDL

Supervisor: KIM SHOEMAKER

Test Type: CONVENTIONAL Job Number: D186

Test Unit: 2

Start Date: 2005/11/28 Start Time: 22:53:00

End Date: 2005/11/29 End Time: 06:00:00

Report Date: 2005/11/29 Prepared By: JOHN RIEDL

Qualified By: KIM SHOEMAKER

### Remarks:

RECOVERY: 100' SLOCM (5%OIL 95%MUD)  
HVYOCM IN TOOL

Operator: L.D. Drilling, Inc.  
Well: Briney "D" 1  
Dst No: 2

Comments relative to analysis of the data obtained from the drill stem test that was run in the Altamont "C" formation by Diamond Testing.

This analysis is based upon the liquid recovery and equations applicable to liquid recovery tests. It has been assumed, for purposes of this analysis that the tested reservoir system consisted of a single porosity zone 5 feet in thickness with an average porosity of 12 percent. The diagnostic plots of the second shut-in period reveal a flow regime equivalent to approximately  $- \frac{1}{2}$  slope. This type of flow regime may be the effect of hemispherical flow due to a partially penetrated reservoir system and/or the presence of a constant pressure boundary such as a water contact. Two reservoir models have been produced for type curve matching and non-linear regression analysis, a constant pressure boundary model and a partial penetration model.

The semi-log plots indicate a maximum initial reservoir pressure of 439 psi and a maximum final reservoir pressure of 438 psi, which is equivalent to a subsurface pressure gradient of 0.096 psi/ft at gauge depth.

The Average Production Rate, which was used in this analysis, has been calculated from analysis of the flow pressure curves using a liquid gradient for the recovered oil of 0.37 psi/ft.

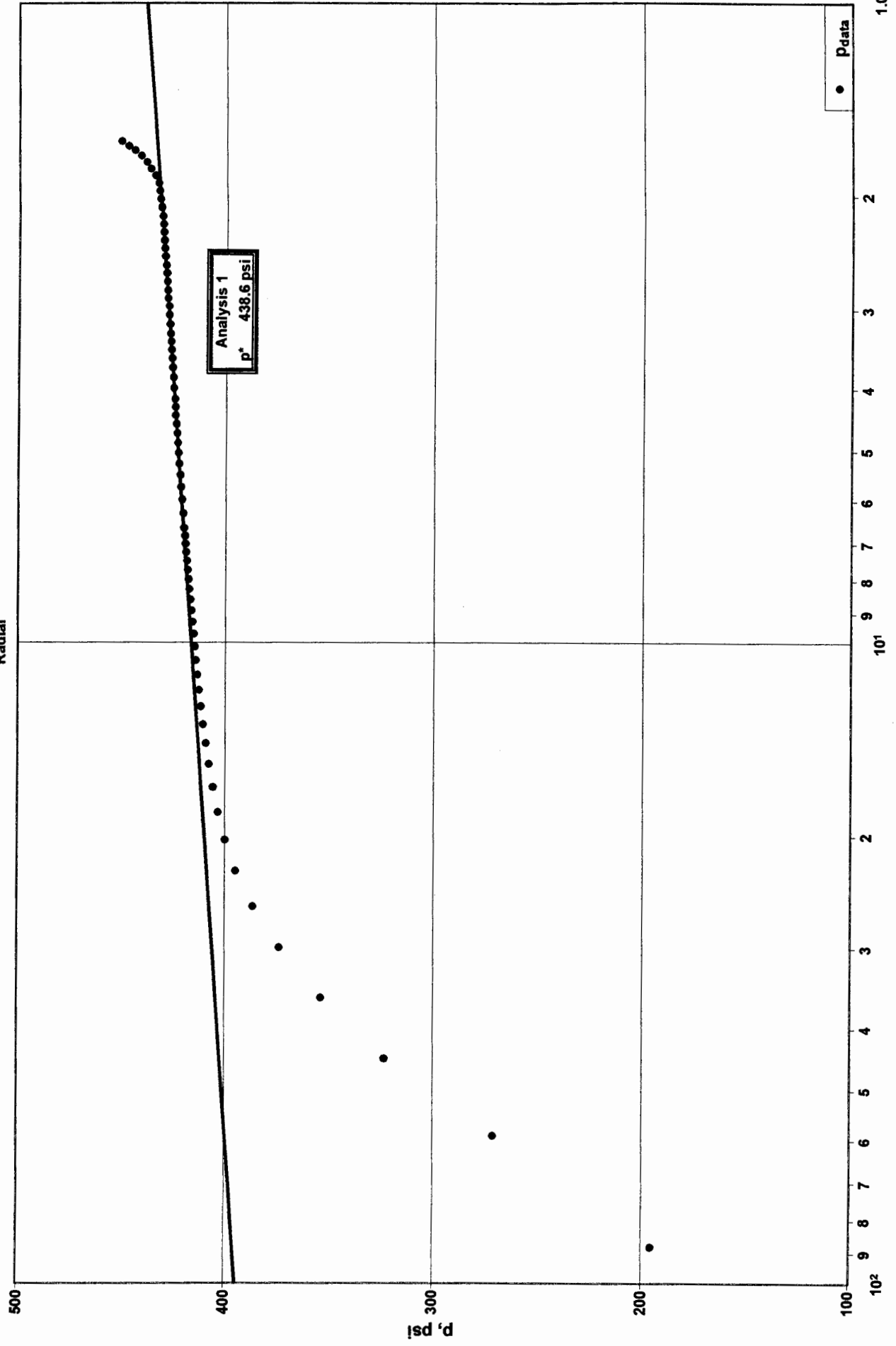
The calculated Skin Factors indicate significant well-bore damage was present at the time of this formation test.

The evaluation criteria used in the drill stem test analysis system indicate this is a good mechanical test and the results obtained in this analysis should be reliable within reasonable limits relative to the assumptions which have been made.

Michael Hudson  
Reservoir Analyst  
(888) 389-8389



### Diagnostic Analysis - Shut In 1



# Drill Stem Test - Buildup Radial Flow Analysis

LD Drilling Inc  
Briney "D" 1, Dst 2

## Analysis Results

Total Sandface Rate ( $q_t B_t$ )	1.586 bbl/d	Apparent Skin ( $s^*$ )	14.602
Semilog Slope (m)	21.55	Skin - Damage	14.602
Oil Permeability ( $k_o$ )	4.112 md	Pressure Drop Due to Skin ( $\Delta p_s$ )	273.43 psi
Flow Capacity (kh)	20.562 md.ft	Damage Ratio (DR)	1.145
Total Mobility ( $k/\mu_t$ )	2.39 md/cp	Flow Efficiency (FE)	0.873
Total Transmissivity ( $kh/\mu_t$ )	11.97 md.ft/cp		

## Reservoir Parameters

Net Pay (h)	5.000 ft
Total Porosity ( $\phi_t$ )	12.00%
Water Saturation ( $S_w$ )	30.00%
Oil Saturation ( $S_o$ )	70.00%
Gas Saturation ( $S_g$ )	0.00%
Wellbore Radius ( $r_w$ )	0.33 ft
Formation Temperature (T)	124.4 °F
Formation Compressibility ( $c_f$ )	4.508e-6 psi <sup>-1</sup>
Total Compressibility ( $c_t$ )	1.275e-5 psi <sup>-1</sup>

## Fluid Properties

Oil Compressibility ( $c_o$ )	1.05063e-5 psi <sup>-1</sup>
Oil Formation Volume Factor ( $B_o$ )	1.220
Oil Viscosity ( $\mu_o$ )	1.718 cp
Solution Gas Ratio ( $R_g$ )	406 scf/bbl
Oil Gravity ( $\gamma_o$ )	30.00 ° API
Gas Gravity (G)	0.650
PVT Reference Pressure ( $p_{pVT}$ )	2234.22 psi

## Pressures

Initial Pressure ( $p_i$ )	2234.22 psi
Extrapolated Pressure ( $p^*$ )	438.21 psi
Final Flowing Pressure ( $p_{wf}$ )	78.09 psi

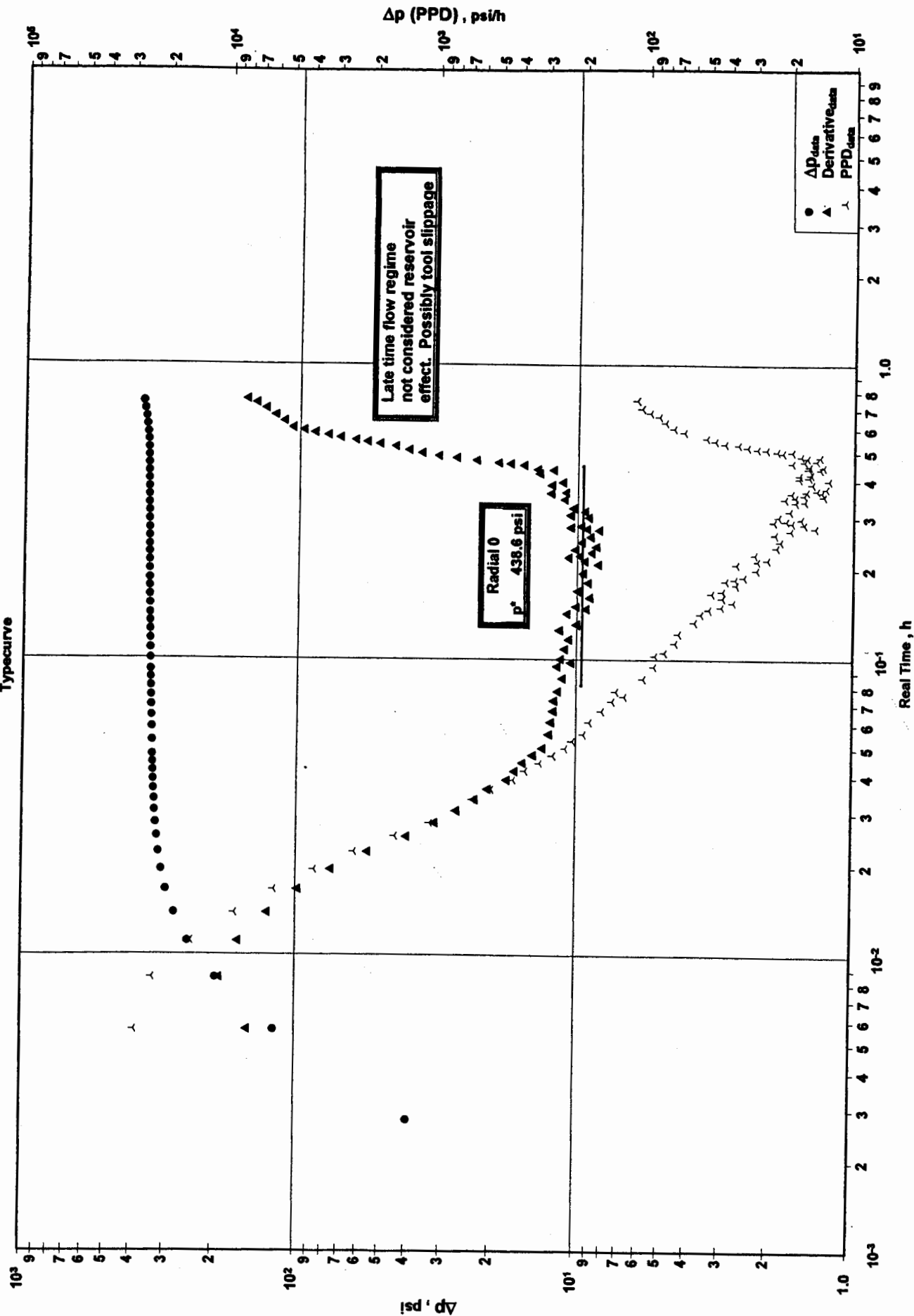
## Production and Times

Corrected Flow Time ( $t_c$ )	1.2389 hr
Cumulative Oil Production During Test	0.067 bbl
Final Oil Rate	1.300 bbl/d

LD Drilling Inc  
Briney "D" 1, Dst 2

Diagnostic Analysis - Shut In 1

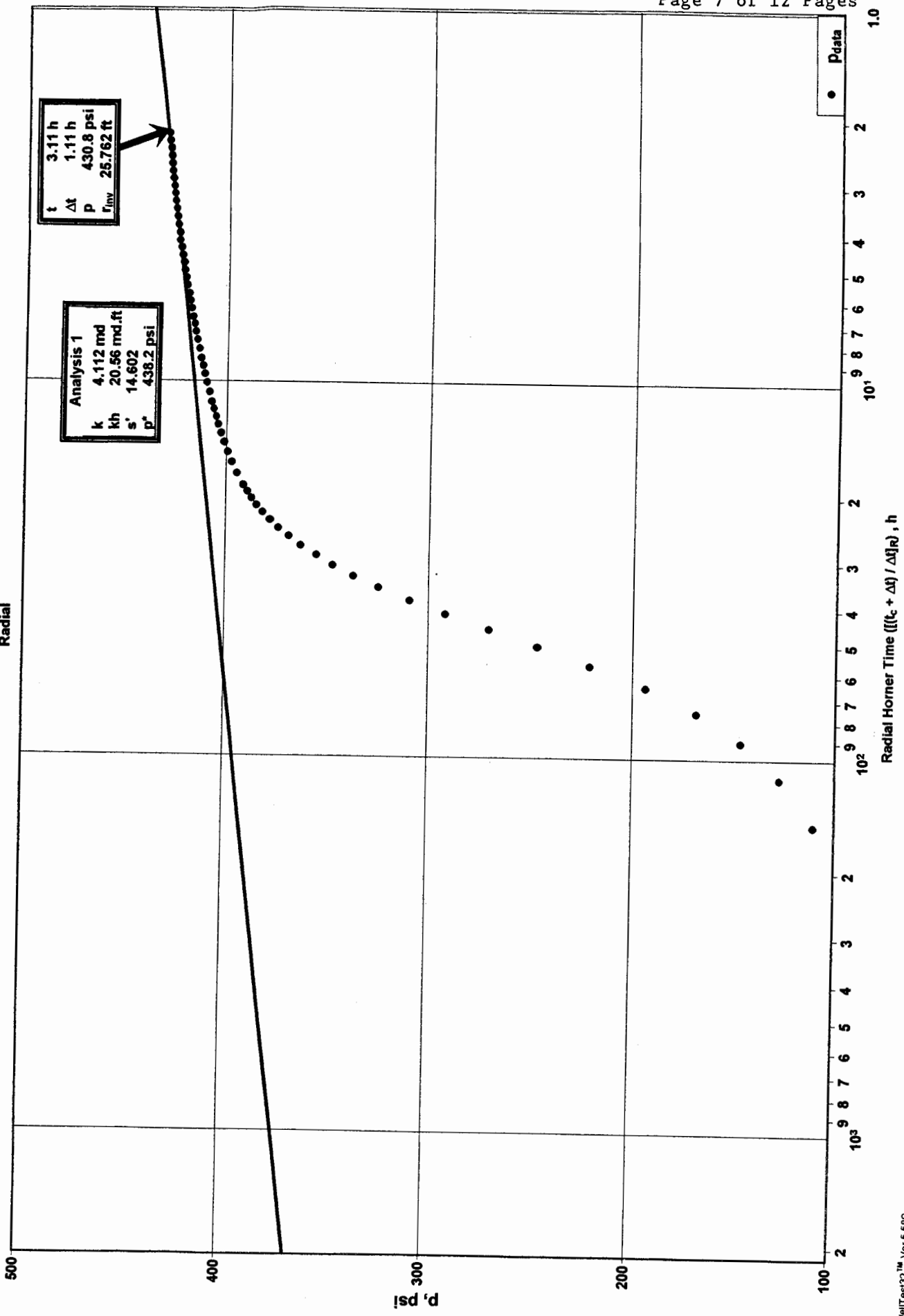
Altamont "C"  
4576'-4602'



Altamont "C"  
4576'-4602'

Diagnostic Analysis - Shut In 2

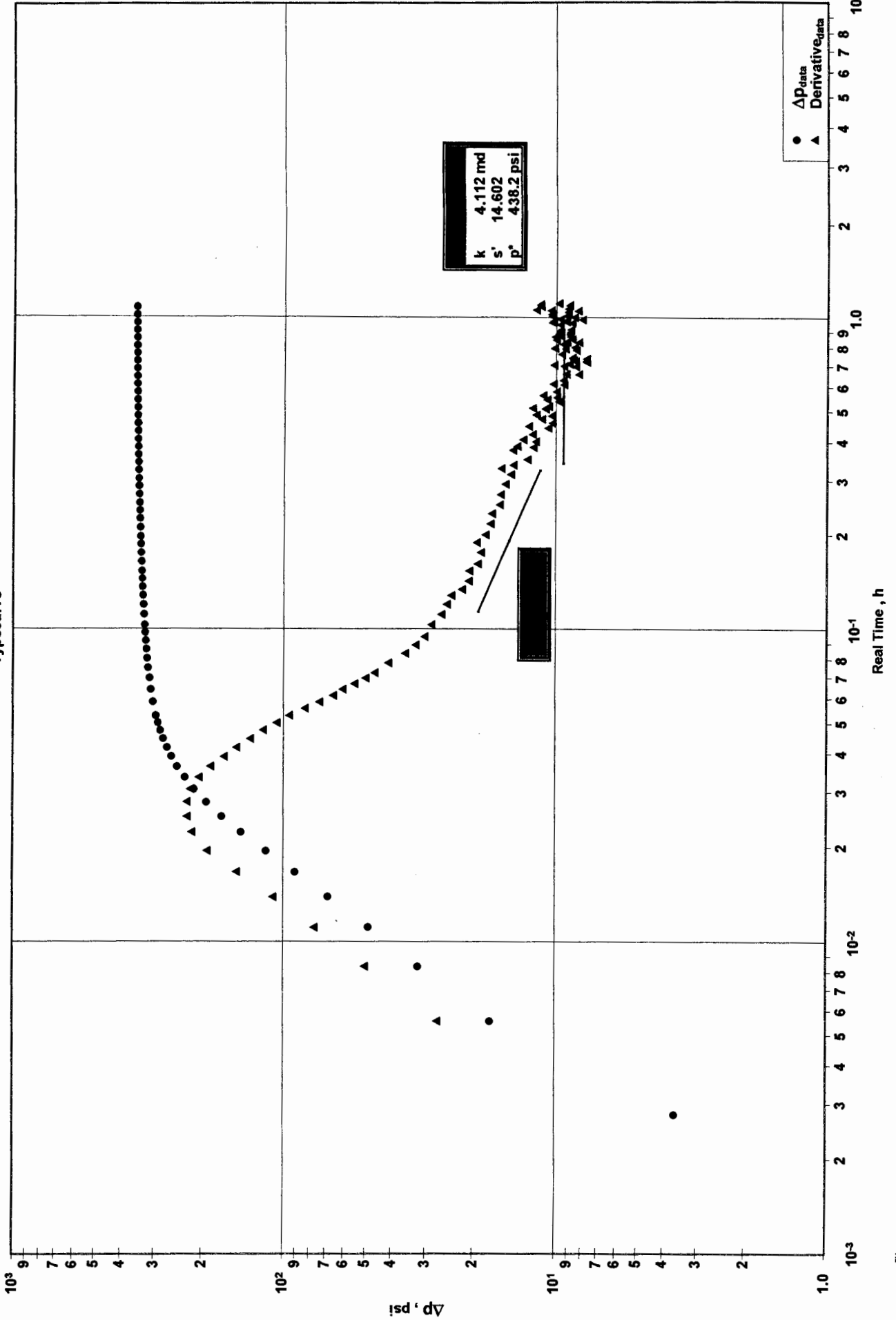
LD Drilling Inc  
Briney "D" 1, Dst 2



Altamont "C"  
4576'-4602'

Diagnostic Analysis - Shut In 2  
Typecurve

LD Drilling Inc  
Briney "D" 1, Dst 2



# Constant Pressure Boundary Model

LD Drilling Inc  
Briney "D" 1, Dst 2

## Model Parameters

Oil Permeability ( $k_o$ )	2.603md	Total Transmissivity ( $kh/\mu$ ) <sub>t</sub>	7.58md.ft/cp
Total Mobility ( $k/\mu$ ) <sub>t</sub>	1.52md/cp	Skin (s)	8.043

## Formation Parameters

Net Pay (h)	5.000ft
Total Porosity ( $\phi_t$ )	12.00%
Oil Saturation ( $S_o$ )	70.00%
Gas Saturation ( $S_g$ )	0.00%
Water Saturation ( $S_w$ )	30.00%
Wellbore Radius ( $r_w$ )	0.33ft
Formation Temperature (T)	124.4°F
Formation Compressibility ( $c_f$ )	4.508e-6psi <sup>-1</sup>
Total Compressibility ( $c_t$ )	1.275e-5psi <sup>-1</sup>
Wellbore Storage Constant Dim. ( $C_D$ )	2.96

## Fluid Properties

Oil Compressibility ( $c_o$ )	1.05063e-5psi <sup>-1</sup>
Gas Compressibility ( $c_g$ )	4.57321e-4psi <sup>-1</sup>
Water Compressibility ( $c_w$ )	2.95635e-6psi <sup>-1</sup>
Oil Formation Volume Factor ( $B_o$ )	1.220
Gas Formation Volume Factor ( $B_g$ )	0.001057 bbl/scf
Water Formation Volume Factor ( $B_w$ )	1.005
Oil Viscosity ( $\mu_o$ )	1.718cp
Gas Viscosity ( $\mu_g$ )	0.0170cp
Water Viscosity ( $\mu_w$ )	0.531cp
Solution Gas Ratio ( $R_g$ )	406scf/bbl
Oil Gravity ( $\gamma_o$ )	30.00° API
Gas Gravity (G)	0.650
PVT Reference Pressure ( $p_{pVT}$ )	2234.22psi
Bubble Point Pressure ( $P_{bp}$ )	2234.22psi

## Production and Pressure

$Q_t B_t$	1.586bbl/d
Final Oil Rate	1.300bbl/d
Final Flowing Pressure ( $p_{wfo}$ )	78.09psi
Final Measured Pressure	430.82psi
Cumulative Oil Production During Test	0.067bbl

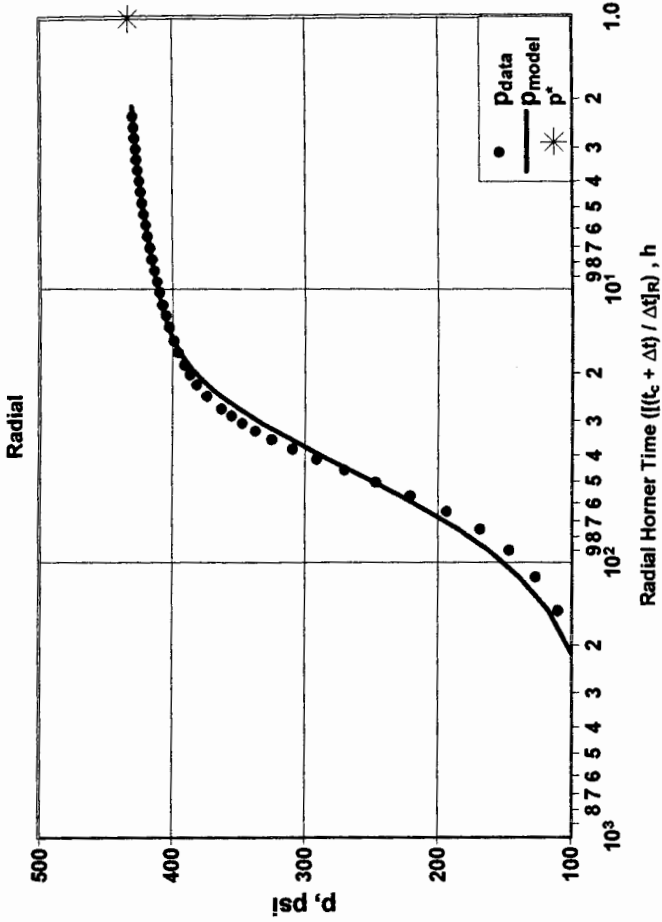
## Synthesis Results

Average Error	-0.01%
Synthetic Initial Pressure ( $p_i$ )	433.08psi
Extrapolated Pressure at Specified Time	433.08psi
Pressure Drop Due To Skin ( $\Delta p_s$ )	237.70psi
Flow Efficiency (FE)	0.330
Damage Ratio (DR)	3.027

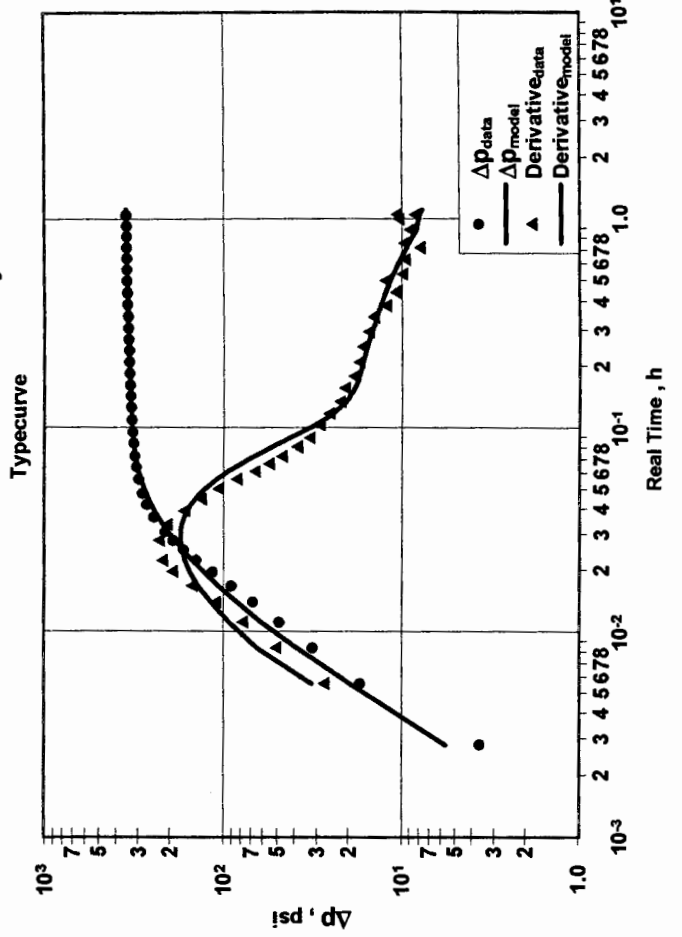
## Forecasts

Forecast Flowing Pressure ( $P_{flow}$ )	78.09psi
3 - Month Constant Rate Forecast @ Curr. Skin	1.276bbl/d
6 - Month Constant Rate Forecast @ Curr. Skin	1.276bbl/d
Forecast Flow Duration ( $t_{flow}$ )	12.00month
Constant Rate Forecast @ Curr. Skin	1.276bbl/d
PI / II (Total Liquids - Actual)	0.004bbl/d/psi
Constant Rate Forecast @ Skin=0	3.726bbl/d
PI / II (Total Liquids - Ideal)	0.010bbl/d/psi
Constant Rate Forecast @ Skin=-4	34.627bbl/d

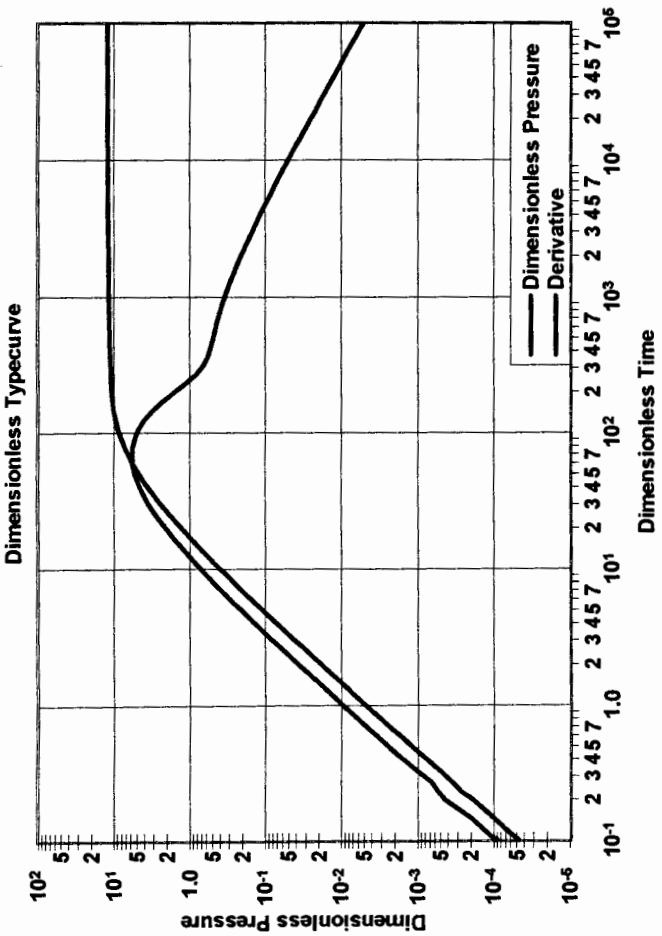
### Constant Pressure Boundary Model



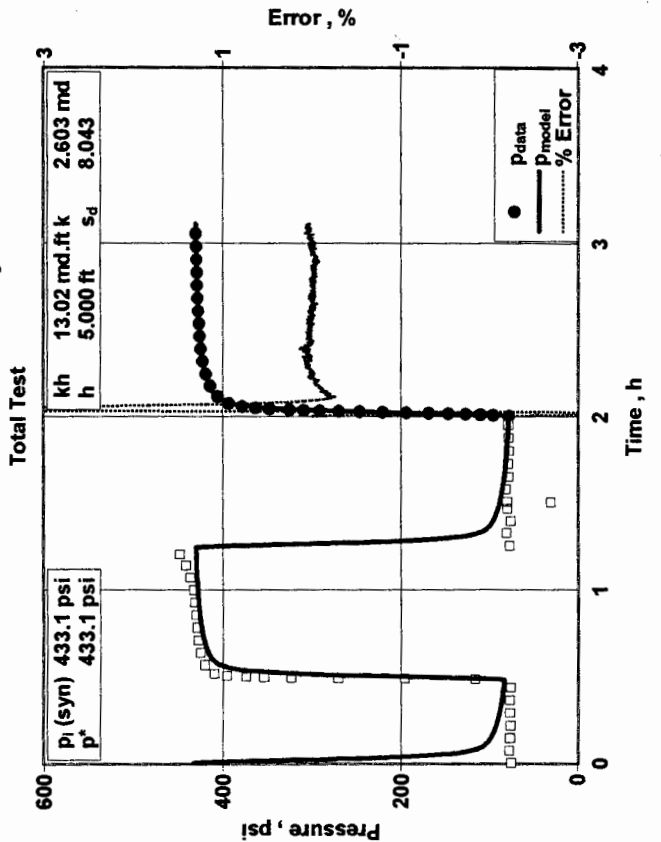
### Constant Pressure Boundary Model



### Constant Pressure Boundary Model



### Constant Pressure Boundary Model



# Partial Penetration Oil Well Model

LD Drilling Inc  
Briney "D" 1, Dst 2

## Model Parameters

Permeability (k)	2.088md	Net Pay (h)	10.000ft
Skin (s)	5.987	Pay Open to Interval (hp)	5.000ft
Total Mobility ( $k/\mu$ ) <sub>t</sub>	1.22md/cp	Horizontal to Vertical Permability Ratio ( $k_H/k_V$ )	96.688
Total Transmissivity ( $kh/\mu$ ) <sub>t</sub>	12.15md.ft/cp	Wellbore Storage Constant Dim. (C <sub>D</sub> )	1.48

## Formation Parameters

Total Porosity ( $\phi_t$ )	12.00%
Oil Saturation ( $S_o$ )	70.00%
Gas Saturation ( $S_g$ )	0.00%
Water Saturation ( $S_w$ )	30.00%
Wellbore Radius ( $r_w$ )	0.33ft
Formation Temperature (T)	124.4°F
Formation Compressibility ( $c_f$ )	4.508e-6psi <sup>-1</sup>
Total Compressibility ( $c_t$ )	1.275e-5psi <sup>-1</sup>

## Fluid Properties

Oil Compressibility ( $c_o$ )	1.05063e-5psi <sup>-1</sup>
Gas Compressibility ( $c_g$ )	4.57321e-4psi <sup>-1</sup>
Water Compressibility ( $c_w$ )	2.95635e-6psi <sup>-1</sup>
Oil Formation Volume Factor ( $B_o$ )	1.220
Gas Formation Volume Factor ( $B_g$ )	0.001057 bbl/scf
Water Formation Volume Factor ( $B_w$ )	1.005
Oil Viscosity ( $\mu_o$ )	1.718cp
Gas Viscosity ( $\mu_g$ )	0.0170cp
Water Viscosity ( $\mu_w$ )	0.531cp
Solution Gas Ratio ( $R_s$ )	406scf/bbl
Oil Gravity ( $\gamma_o$ )	30.00° API
Gas Gravity (G)	0.650
PVT Reference Pressure ( $pp_{VT}$ )	2234.22psi
Bubble Point Pressure ( $P_{bp}$ )	2234.22psi

## Production and Pressure

$Q_t B_t$	1.586bbl/d
Final Oil Rate	1.300bbl/d
Final Flowing Pressure ( $p_{wfo}$ )	78.09psi
Final Measured Pressure	430.82psi
Cumulative Oil Production During Test	0.067bbl

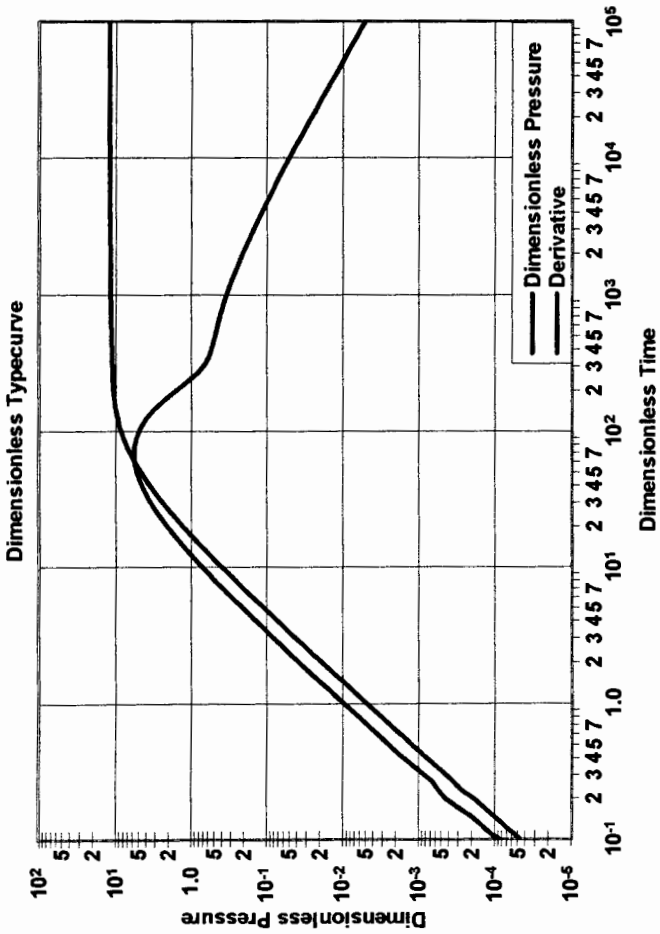
## Synthesis Results

Average Error	-0.12%
Synthetic Initial Pressure ( $p_i$ )	432.75psi
Extrapolated Pressure at Specified Time	432.75psi
Pressure Drop Due To Skin ( $\Delta p_s$ )	220.62psi
Flow Efficiency (FE)	0.378
Damage Ratio (DR)	2.646

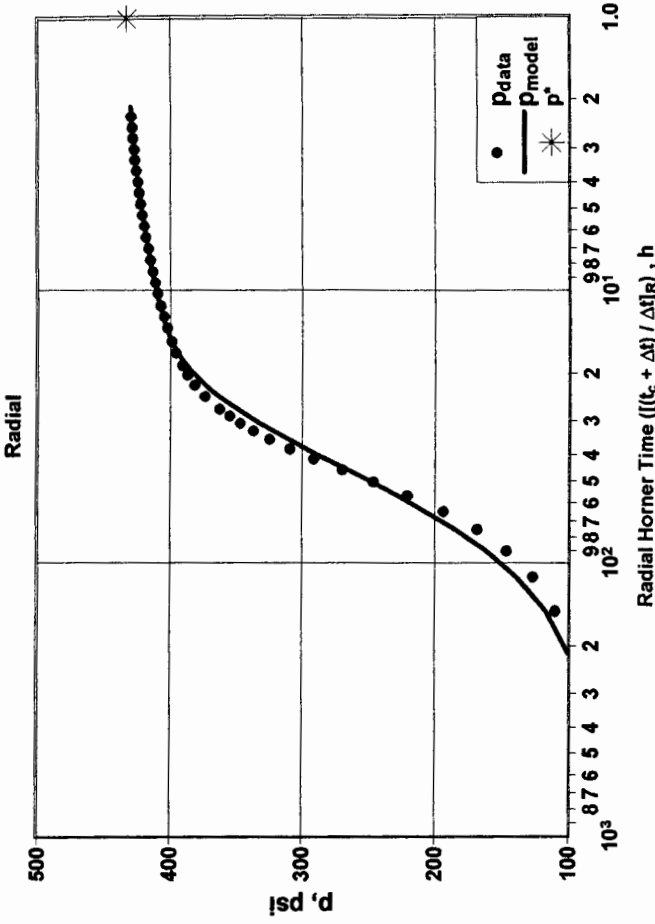
## Forecasts

Forecast Flowing Pressure ( $P_{flow}$ )	78.09psi
3 - Month Constant Rate Forecast @ Curr. Skin	1.279bbl/d
6 - Month Constant Rate Forecast @ Curr. Skin	1.279bbl/d
Forecast Flow Duration ( $t_{flow}$ )	12.00month
Constant Rate Forecast @ Curr. Skin	1.279bbl/d
PI / II (Total Liquids - Actual)	0.004bbl/d/psi
Constant Rate Forecast @ Skin=0	3.297bbl/d
PI / II (Total Liquids - Ideal)	0.009bbl/d/psi
Constant Rate Forecast @ Skin=-4	30.245bbl/d

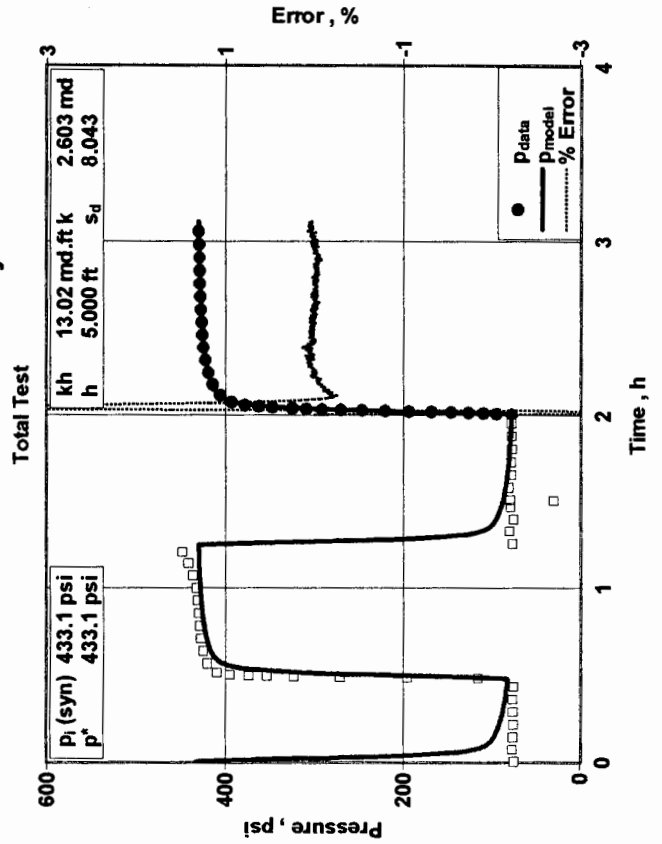
### Constant Pressure Boundary Model



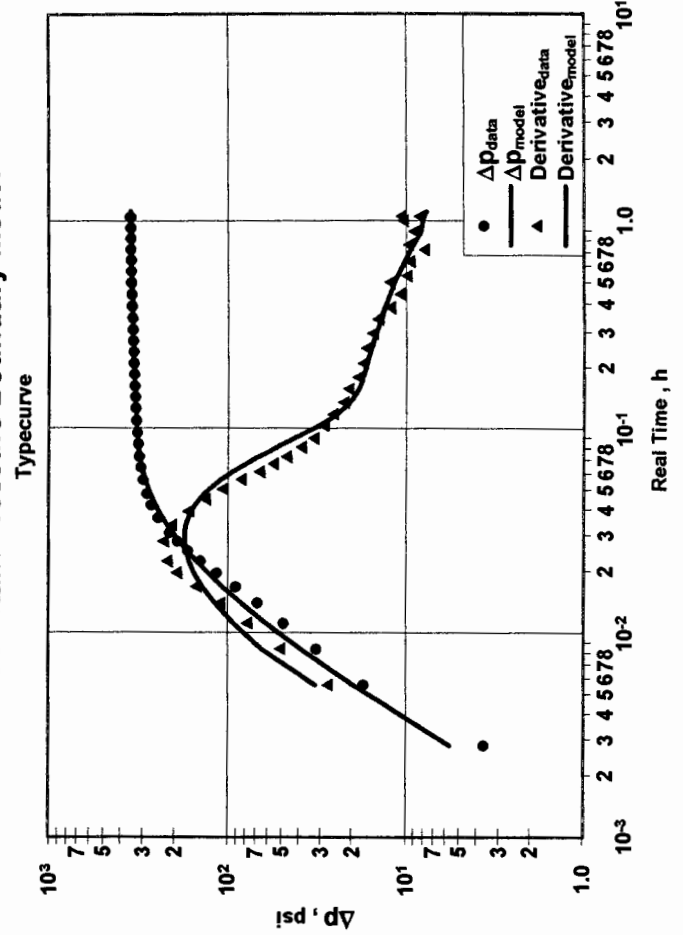
### Constant Pressure Boundary Model



### Constant Pressure Boundary Model



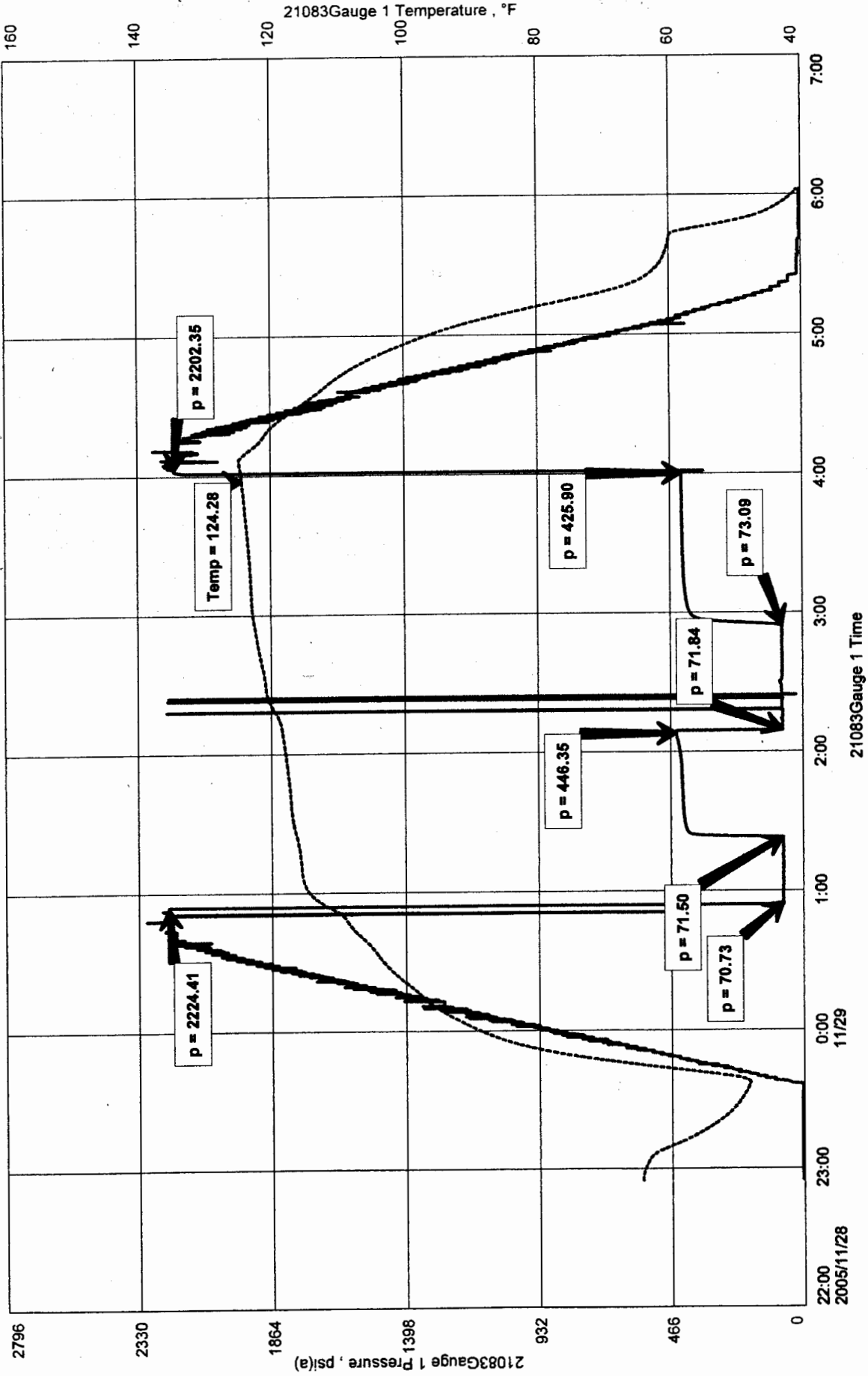
### Constant Pressure Boundary Model

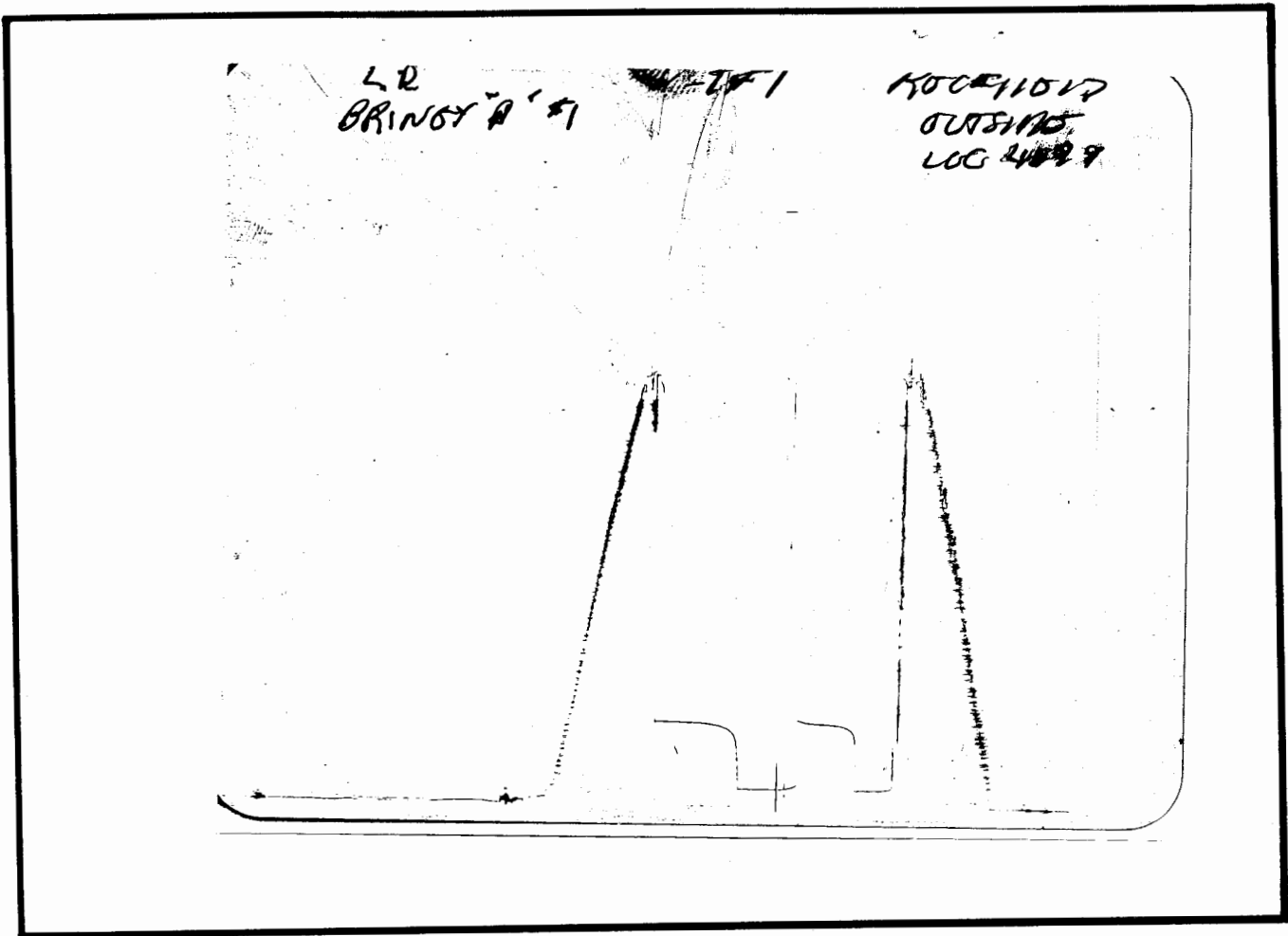


LD DRILLING INC.  
 DST #2 4576 TO 4602  
 Start Test Date: 2005/11/28  
 Final Test Date: 2005/11/29

BRINEY "D" #1  
 Formation: ALTAMONT "C"  
 Job Number: D186

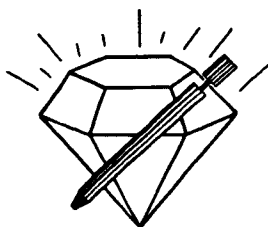
# BRINEY "D" #1





This is an actual photograph of recorder chart.

POINT	PRESSURE		PSI
	Field Reading	Elec. Office Reading	
(A) Initial Hydrostatic Mud	2224	2224	PSI
(B) First Initial Flow Pressure	71	71	PSI
(C) First Final Flow Pressure	72	72	PSI
(D) Initial Closed-in Pressure	448	448	PSI
(E) Second Initial Flow Pressure	72	72	PSI
(F) Second Final Flow Pressure	73	73	PSI
(G) Final Closed-in Pressure	426	426	PSI
(H) Final Hydrostatic Mud	2202	2202	PSI



# DIAMOND TESTING

P.O. Box 157  
HOISINGTON, KANSAS 67544  
(620) 653-7550 • (800) 542-7313  
STC 21083.D192

Page 1 of 2 Pages

Company L. D. Drilling, Inc. Lease & Well No. Briney "D" No. 1  
Elevation 3374KB Formation Pawnee Effective Pay      Ft. Ticket No. J1780  
Date 11-29-05 Sec. 29 Twp. 5S Range 36W County Rawlins State Kansas  
Test Approved By Kim Shoemaker Diamond Representative John C. Riedl

Formation Test No. 3 Interval Tested from 4,610 ft. to 4,645 ft. Total Depth 4,645 ft.  
Packer Depth 4,605 ft. Size 6 3/4 in. Packer Depth      ft. Size      in.  
Packer Depth 4,610 ft. Size 6 3/4 in. Packer Depth      ft. Size      in.  
Depth of Selective Zone Set      ft.

Top Recorder Depth (Inside) 4,613 ft. Recorder Number 21108 Cap. 5,000 psi  
Bottom Recorder Depth (Outside) 4,642 ft. Recorder Number 11017 Cap. 4,000 psi  
Below Straddle Recorder Depth      ft. Recorder Number      Cap.      psi

Drilling Contractor L. D. Drilling, Inc. - Rig 1 Drill Collar Length      ft. I.D.      in.  
Mud Type Chemical Viscosity 47 Weight Pipe Length      ft. I.D.      in.  
Weight 9.2 Water Loss 7.2 cc. Drill Pipe Length 4,590 ft. I.D. 3 1/2 in.  
Chlorides 3,000 P.P.M. Test Tool Length 20 ft. Tool Size 3 1/2 IF in.  
Jars: Make Bowen Serial Number Not Run Anchor Length 35 ft. Size 4 1/2 - FH in.  
Did Well Flow? No Reversed Out No Surface Choke Size 1 in. Bottom Choke Size 5/8 in.  
Main Hole Size 7 7/8 in. Tool Joint Size 4 1/2 - XH in.

Blow: 1st Open: Weak, 1 1/2 in., blow decreasing to 1 in.  
2nd Open: Weak surface blow. Dead in 20 mins.

Recovered 10 ft. of oil specked mud = .102600 bbls.

Recovered      ft. of       
Recovered      ft. of       
Recovered      ft. of       
Recovered      ft. of     

Remarks     

Time Set Packer(s) 8:17 ~~AM~~ P.M. Time Started Off Bottom 11:17 ~~PM~~ A.M. Maximum Temperature 132°

Initial Hydrostatic Pressure ..... (A) 2272 P.S.I.  
Initial Flow Period ..... Minutes 30 (B) 35 P.S.I. to (C) 36 P.S.I.  
Initial Closed In Period ..... Minutes 45 (D) 55 P.S.I.  
Final Flow Period ..... Minutes 45 (E) 35 P.S.I. to (F) 36 P.S.I.  
Final Closed In Period ..... Minutes 60 (G) 48 P.S.I.  
Final Hydrostatic Pressure ..... (H) 2237 P.S.I.

## GENERAL INFORMATION

### Client Information:

Company: L D DRILLING INC.

Contact: L D DAVIS

Phone: Fax: e-mail:

### Site Information:

Contact: KIM SHOEMAKER

Phone: Fax: e-mail:

### Well Information:

Name: BRINEY "D" #3

Operator: L D DRILLING INC.

Location-Downhole: DST #3 4610 TO 4645

Location-Surface: S29/5S/36W RAWLINS

### Test Information:

Company: DIAMOND TESTING

Representative: JOHN RIEDL

Supervisor: KIM SHOEMAKER

Test Type: CONVENTIONAL Job Number: D192

Test Unit: 2

Start Date: 2005/11/29 Start Time: 18:33:00

End Date: 2005/11/30 End Time: 01:50:00

Report Date: 2005/11/30 Prepared By: JOHN RIEDL

Qualified By: KIM SHOEMAKER

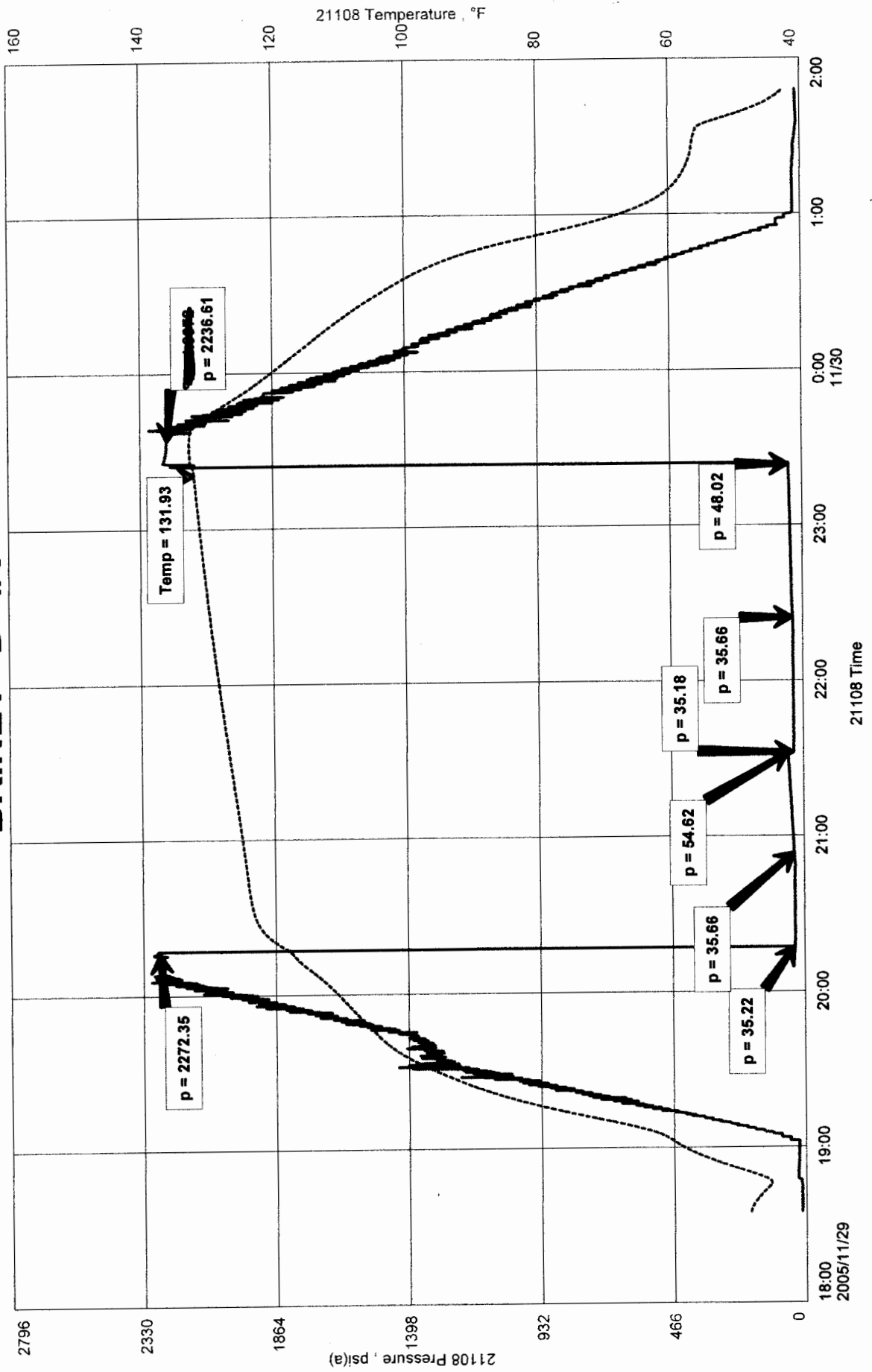
### Remarks:

RECOVERY: 10' OIL SPECKED MUD

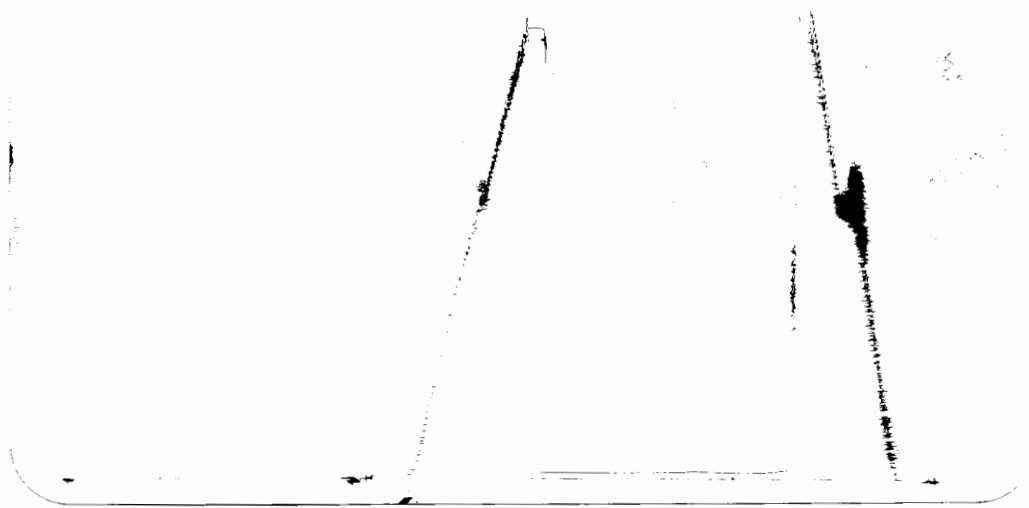
LD DRILLING INC.  
DST #3 4610 TO 4645  
Start Test Date: 2005/11/29  
Final Test Date: 2005/11/30

BRINEY "D" #3  
Formation: PAWNEE  
Job Number: D192

# BRINEY "D" #3



LD  
 BHN07 D#1  
 DST #3  
 RSC #1107  
 00510  
 LOC 4642



This is an actual photograph of recorder chart.

POINT	PRESSURE		Elec. Office Reading	PSI
	Field Reading			
(A) Initial Hydrostatic Mud	2272	2272		PSI
(B) First Initial Flow Pressure	35	35		PSI
(C) First Final Flow Pressure	36	36		PSI
(D) Initial Closed-in Pressure	55	55		PSI
(E) Second Initial Flow Pressure	35	35		PSI
(F) Second Final Flow Pressure	36	36		PSI
(G) Final Closed-in Pressure	48	48		PSI
(H) Final Hydrostatic Mud	2237	2237		PSI



# DIAMOND TESTING

P.O. Box 157  
HOISINGTON, KANSAS 67544  
(620) 653-7550 • (800) 542-7313  
STC 21083.D193

Page 1 of 2 Pages

Company L. D. Drilling, Inc. Lease & Well No. Briney "D" No. 1  
Elevation 3374KB Formation Johnson Effective Pay      Ft. Ticket No. J1784  
Date 11-30-05 Sec. 29 Twp. 5S Range 36W County Rawlins State Kansas  
Test Approved By Kim Shoemaker Diamond Representative John C. Riedl

Formation Test No. 4 Interval Tested from 4,722 ft. to 4,766 ft. Total Depth 4,766 ft.

Packer Depth 4,717 ft. Size 6 3/4 in. Packer Depth      ft. Size      in.

Packer Depth 4,722 ft. Size 6 3/4 in. Packer Depth      ft. Size      in.

Depth of Selective Zone Set      ft.

Top Recorder Depth (Inside) 4,725 ft. Recorder Number 21083 Cap. 5,000 psi

Bottom Recorder Depth (Outside) 4,763 ft. Recorder Number 11017 Cap. 4,000 psi

Below Straddle Recorder Depth      ft. Recorder Number      Cap.      psi

Drilling Contractor L. D. Drilling, Inc. - Rig 1 Drill Collar Length      ft. I.D.      in.

Mud Type Chemical Viscosity 46 Weight Pipe Length      ft. I.D.      in.

Weight 9.3 Water Loss 8.8 cc. Drill Pipe Length 4,702 ft. I.D. 3 1/2 in.

Chlorides 4,000 P.P.M. Test Tool Length 20 ft. Tool Size 3 1/2 IF in.

Jars: Make Bowen Serial Number Not Run Anchor Length 44 ft. Size 4 1/2 - FH in.

Did Well Flow? No Reversed Out No Surface Choke Size 1 in. Bottom Choke Size 5/8 in.

Main Hole Size 7/8 in. Tool Joint Size 4 1/2 - XH in.

Blow: 1st Open: Strong blow. Off bottom of bucket in 12 mins. No blow back during shut-in.

2nd Open: Strong blow. Off bottom of bucket in 21 mins. No blow back during shut-in.

Recovered 40 ft. of very slightly oil cut watery mud = .410400 bbls. (Grind out: 1%-oil; 10%-water; 89%-mud)

Recovered 250 ft. of water cut mud = 2.565000 bbls. (Grind out: 40%-water; 60%-mud)

Recovered 490 ft. of water = 5.02740 bbls. (Chlorides: 14,000 Ppm)

Recovered 780 ft. of TOTAL FLUID = 8.002800 bbls.

Recovered      ft. of     

Remarks     

Time Set Packer(s) 4:57 ~~AM~~ P.M. Time Started Off Bottom 7:57 ~~AM~~ P.M. Maximum Temperature 153°

Initial Hydrostatic Pressure ..... (A) 2319 P.S.I.

Initial Flow Period ..... Minutes 30 (B) 33 P.S.I. to (C) 186 P.S.I.

Initial Closed In Period ..... Minutes 45 (D) 1064 P.S.I.

Final Flow Period ..... Minutes 45 (E) 196 P.S.I. to (F) 373 P.S.I.

Final Closed In Period ..... Minutes 60 (G) 1067 P.S.I.

Final Hydrostatic Pressure ..... (H) 2290 P.S.I.

## GENERAL INFORMATION

### Client Information:

Company: L D DR4ILLING INC.

Contact: L D DAVIS

Phone: Fax: e-mail:

### Site Information:

Contact: KIM SHOEMAKER

Phone: Fax: e-mail:

### Well Information:

Name: BRINEY "D" #1

Operator: L D DRILLING INC.

Location-Downhole: DST #4 4722 TO 4766

Location-Surface: S29/5S/36W RAWLINS COUNTY

### Test Information:

Company: DIAMOND TESTING

Representative: JOHN RIEDL

Supervisor: KIM SHOEMAKER

Test Type: CONVENTIONAL Job Number: D192

Test Unit: 2

Start Date: 2005/11/30 Start Time: 15:30:00

End Date: 2005/11/30 End Time: 23:30:00

Report Date: 2005/11/30 Prepared By: JOHN RIEDL

Qualified By: KIM SHOEMAKER

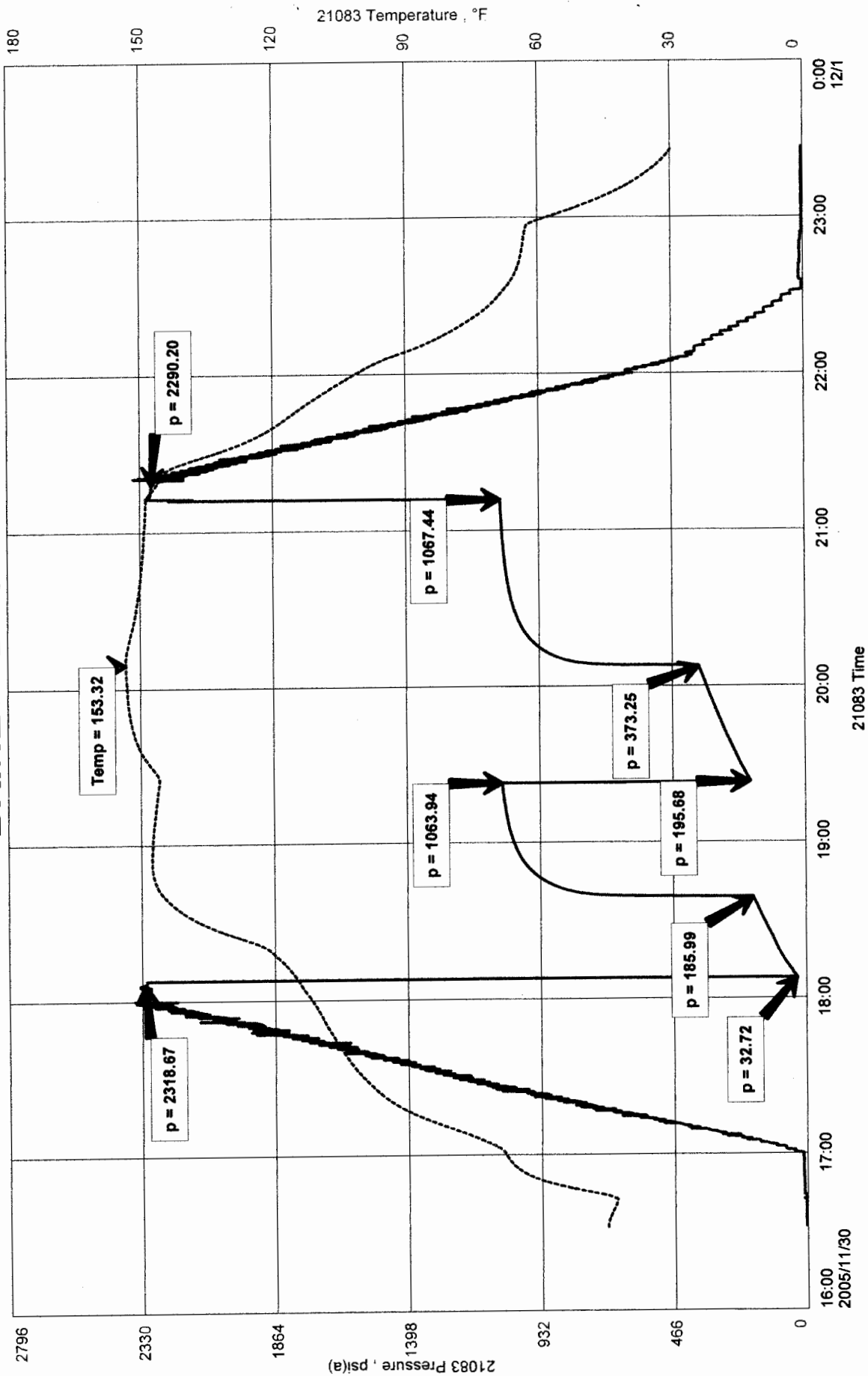
### Remarks:

REC: 40' VSLOCWM (1%OIL 10%WATER 89%MUD)  
250' WCM (40%WATER 60%MUD)  
490' WATER(CHLORIDES 14,000Ppm)  
780' TOTAL FLUID RECOVERY

BRINEY "D" #1  
Formation: JOHNSON  
Job Number: D192

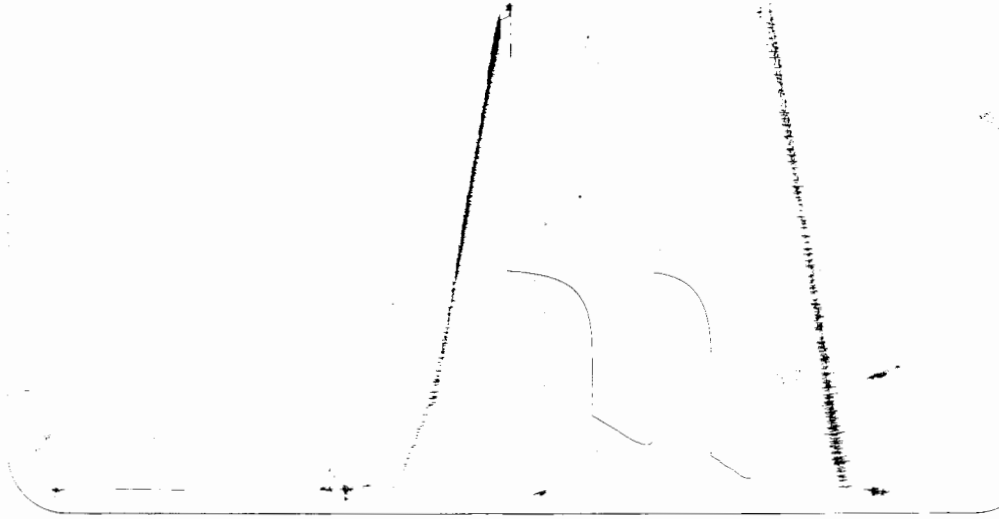
L D DR4ILLING INC.  
DST #4 4722 TO 4766  
Start Test Date: 2005/11/30  
Final Test Date: 2005/11/30

# BRINEY "D" #1



CD  
BRUNN # 1

Roc #1700  
OUTSIDE  
LOC 6863



This is an actual photograph of recorder chart.

POINT	PRESSURE Elec.		
	Field Reading	Office Reading	
(A) Initial Hydrostatic Mud	2319	2319	PSI
(B) First Initial Flow Pressure	33	33	PSI
(C) First Final Flow Pressure	186	186	PSI
(D) Initial Closed-in Pressure	1064	1064	PSI
(E) Second Initial Flow Pressure	196	196	PSI
(F) Second Final Flow Pressure	373	373	PSI
(G) Final Closed-in Pressure	1067	1067	PSI
(H) Final Hydrostatic Mud	2290	2290	PSI