

Kansas

Mitchell

T. R.  
6S 6W

12

ELEVATION  
1558

PRODUCTION  
D. & A.

Murfin COMPANY

Stillwell NO. 1

COMMENCED NW-SW-NW

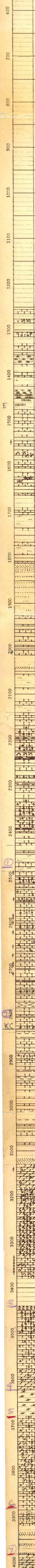
COMPLETED

REMARKS I.D. 4032

Kansas Sample Log

Service Log No. 3556

A-27-53 Davies



50' red & gray sh.  
wh. to cream, dsa. to f. xln. lst  
same sh.  
75' tan, f. gran., dolomitic lst.  
85' red & gray sh.  
95' gray, dsa. to f. xln., fossilif., cherty lst.  
same sh.  
wh. dsa. lst.  
105' gray sh.  
115' cream, dsa. to f. xln. lst.  
125' gray, calc. siltstone  
135' wh. dsa. lst.  
145' red & gray sh.  
155' wh. to cream dsa. to f. xln. lst.  
165' red sh. Cottonwood Fvs. Zone 1430  
175' cream-gray dsa. to f. xln. lst.  
185' red & gray sh.  
195' gray, fusulinidal marl & shalay, fos. lst.  
205' red & gray, limy sh.  
215' cream, dsa. lst. Neva 1475  
225' gray sh.  
235' cream-gray, dsa. to f. xln., fossilif. lst.  
245' red & gray sh.; gray-buff, f. xln., fossilif. lst.  
255' buff, mottled, pseudo-ool. lst.  
265' red & gray sh.  
275' buff, f. gran., dolomitic lst.  
285' gray sh.  
295' gray, dsa. to f. xln. lst.  
305' gray sh.  
315' gray-buff, f. xln., fossilif., shalay lst.  
325' red & gray sh.  
335' gray, dsa. to f. xln. lst.  
345' red & gray sh.  
355' lt. gray, dsa. to f. xln., fossilif. lst.  
365' red & gray, sli. sandy sh.  
375' lt. gray, f. xln., fossilif. lst.  
385' red & gray sh.  
395' cream-gray, dsa. to f. xln. lst.  
405' red & gray, sli. sandy sh.  
415' gray sh. & gray, dsa. to f. xln. lst.  
425' gray, f. gn., sub-ang., micac. sst.  
435' sst. as above, interbedded with red & gray sh.  
445' red & gray, sli. sandy sh.  
455' gray, dsa. to f. xln. lst.; interbedded red & gray sh.  
465' gray, f. xln., fossilif. lst., sli. ool. por.  
475' red & gray sh.  
485' gray, f. gn., sub-ang., micac. sst.  
495' gray sh.  
505' red & gray, sli. sandy sh., streaks gray, dsa. to f. xln. lst.  
515' gray, f. xln., fossilif. lst.  
525' red & gray, sli. sandy sh.  
535' gray-buff, dsa. to f. xln., fossilif. lst.  
545' gray sh. Tonka 2140  
555' lt. gray to buff, f. xln., fossilif., cherty dk. gray sh.  
565' gray, f. xln., fossilif. lst., cherty in part  
575' gray sh.  
585' buff, f. gran., porous, dolomitic lst.  
595' red sh.  
605' cream-gray, dsa. to f. xln. lst.  
615' gray sh. & cream, dsa. lst.  
625' cream-gray, dsa. to f. xln., cherty, lst.  
635' gray sh. sh. gray, dsa. to f. xln. lst.  
645' black sh.  
655' gray-buff, f. xln., fossilif. lst.  
665' gray sh. & gray, dsa. to f. xln. lst.  
675' cream-gray, dsa. to f. xln., fossilif., cherty, lst., streaks good pin-point por. in part; abundant fusulids  
685' gray sh. Heepner 2294  
695' gray, f. xln., fossilif., cherty, lst.  
705' black sh. pin-point por.  
715' gray-buff, dsa. to f. xln. lst.  
725' red sh.  
735' wh. dsa. to f. xln. lst.; interbedded red & gray sh.  
745' red & gray, sli. sandy sh.; streaks lt. gray-buff, f. xln., fossilif. lst.  
755' lt. gray, por., ool. lst.  
765' gray sh.  
775' cream, dsa., cherty, lst.  
785' gray sh. & lt. gray, f. xln., fossilif. lst.  
795' lt. gray, dsa. to f. xln., fossilif., sli. cherty  
805' gray sh. & gray, f. xln., fossilif., cherty, faintly ool. lst.  
815' cream-gray, dsa. to f. xln., fossilif. lst.  
825' wh., f. xln., fossilif., cherty, lst.  
835' cream-gray, por., ool. lst., cherty in part  
845' gray sh.  
855' gray, dsa. to f. xln. lst., scat. ool. por.  
865' gray sh.  
875' wh. dsa. to f. xln., fossilif., sli. cherty  
885' gray sh. lst., sli. ool. por. @ base  
895' cream-gray, dsa. to f. xln. lst., scat. ool. por.  
905' gray, por., ool. lst.  
915' gray sh. & cream-gray, dsa. to f. xln.  
925' cream-gray, dsa. to f. xln., fossilif. lst.  
935' black sh.  
945' gray, f. xln., fossilif. lst.  
955' cream-gray, dsa. to f. xln., cherty, lst. & gray sh.  
965' dk. gray to black sh.  
975' gray-buff, dsa. to f. xln. lst.  
985' gray, dsa. to f. xln., fossilif. lst., cherty @ base; streaks gray sh.  
995' gray-buff, dsa. to f. xln. lst.  
1005' dk. gray to black sh.  
1015' red sh.  
1025' gray, f. xln., fossilif. lst.  
1035' gray sh. & gray-buff, dsa. to f. xln. lst.  
1045' gray-buff, dsa. to f. xln., cherty, lst.  
1055' lt. gray, dsa. to f. xln., fossilif. lst.  
1065' gray sh. on gray-buff, dsa. to f. xln. lst.  
1075' black sh. red & gray sh.  
1085' dk. gray to black, dsa. to f. xln., fossilif. lst.  
1095' dk. gray to black sh.  
1105' gray-buff, dsa. to f. xln. lst.  
1115' red & gray sh., w/ interbedded gray, dsa. lst.  
1125' dk. gray to black sh. in part  
1135' lst. is dk. brown in part  
1145' varicolored sh.  
1155' Burgess Sst. 3117  
1165' gray, med. to co. gn., ang. to sub-round, non-micac. sst.  
1175' X Mississippian 3130  
1185' buff, f. suc., sli. cherty dolo., ool. & fossil-cast por. in part  
1195' gray-buff, sucrose to co. xln., cherty, dolomitic lst., gray mottled op. for chert  
1205' brown, sucrose, cherty dolo.; chert as above  
1215' tan & gray, sucrose to f. xln., profusely cherty dolo.; wh. & gray, op. to sub-op., fossilif. chert  
1225' Gilmore City 3330  
1235' gray-buff, coarsely & profusely ool. lst., dolomitic in streaks  
1245' Kinderhook sh. 3380  
1255' green, gray, & rusty-brown sh.  
1265' Hunton (Silurian) 3440  
1275' wh., smooth, op. to sub-op., residual chert  
1285' wh. to yellow, cherty, lst.  
1295' wh., dsa. to co. xln., cherty, lst. silic. 4el, or wh., smooth, sub-op. chert  
1305' ck silic. wh. ls  
1315' wh., dsa., sli. cherty, lst. medly  
1325' esse abundant glauc. in soft xln. ls  
1335' wh. to pinkish, f. to med. xln., cherty, lst.  
1345' lt. gray to tan, med. xln., sli. cherty dolo.; chert as above  
1355' dolo. is vuggy, porous, & sli. glauconitic  
1365' Maquoketa sh. 3622  
1375' pale greenish-gray, sli. dolomitic sh., gray to lite fragments  
1385' Viola 3680 (-2120)  
1395' lt. gray to buff, partly mottled f. to co. xln. lst.; wh. to buff, op. to sub-op. chert  
1405' chert is dove gray, & tan in part  
1415' lst. is dolomitic in streaks  
1425' gray-buff, med. xln., cherty dolo.; lt. gray, chalky, op. chert  
1435' gray-buff, f. to med. xln., sli. cherty, dolomitic lst.  
1445' lt. gray, co. xln. lst.  
1455' Simpson 3885  
1465' green, sli. sandy sh.  
1475' gray, dsa., speckled, sandy, sli. dolomitic lst.  
1485' green & brown sh.  
1495' gray, f. to co. gn., ang. to sub-round & frosted sst.; interbedded with green sh.  
1505' Arbuckle 3982 (-2424)  
1515' gray-buff, med. to co. xln. dolo., ool. chert, good vugular porosity in part  
1525' 3982  
1535' 3440  
1545' total depth 4032

6-6W

547