

15-163-23603



DIAMOND TESTING

P.O. Box 157
HOISINGTON, KANSAS 67544
(620) 653-7550 • (800) 542-7313
STC 21098.d420

Company Trans Pacific Oil Corporation Lease & Well No Hansen Foundation "B" # 1-12

Elevation 1968 KB Formation Upper Topeka Effective Pay Ft. Ticket No. 2302

Date 5-04-07 Sec. 12 Twp. 6S Range 18W County Rooks State Kansas

Test Approved By W. Bryce Bidleman Diamond Representative Roger D. Friedly

Formation Test No. 1 Interval Tested from 2,929 ft. to 2,940 ft. Total Depth 2,940 ft.

Packer Depth 2,924 ft. Size 6 3/4 in. Packer Depth ft. Size in.

Packer Depth 2,929 ft. Size 6 3/4 in. Packer Depth ft. Size in.

Depth of Selective Zone Set ft.

Top Recorder Depth (Inside) 2,917 ft. Recorder Number 21098 Cap. 5,000 psi

Bottom Recorder Depth (Outside) 2,937 ft. Recorder Number 13387 Cap. 4,000 psi

Below Straddle Recorder Depth ft. Recorder Number Cap. psi

Drilling Contractor Shields Drilling Company, Inc. - Rig 1 Drill Collar Length ft. I.D. in.

Mud Type Chemical Viscosity 63 Weight Pipe Length 315 ft. I.D. 2 7/8 in.

Weight 9.0 Water Loss 6.4 cc. Drill Pipe Length 2,589 ft. I.D. 3 1/2 in.

Chlorides 2,000 P.P.M. Test Tool Length 25 ft. Tool Size 3 1/2 - IF in.

Jars: Make Bowen Serial Number Not Run Anchor Length 11 ft. Size 4 1/2 - FH in.

Did Well Flow? No Reversed Out No Surface Choke Size 1 in. Bottom Choke Size 5/8 in.

Main Hole Size 7 7/8 in. Tool Joint Size 4 1/2 - XH in.

Blow: 1st Open: Weak, 1/8 in., blow increasing to 1/2 in. No blow back during shut-in.

2nd Open: No blow. (MISRUN!)

Recovered 20 ft. of drilling mud with a few oil specks = .160600 bbls.

Recovered ft. of

Recovered ft. of

Recovered ft. of

Recovered ft. of

Remarks Tool Sample Grind Out: 100%-drilling mud with good oil spots

Tool sliding 8' to 10' to bottom. Tool sliding on turning & shut-in. Tool settled 3' to 4' off bottom.
Anchor & packers plugged with heavy, heavy mud & some cuttings.

Time Set Packer(s) 3:08 ^{A.M.}/_{P.M.} Time Started Off Bottom 6:23 ^{A.M.}/_{P.M.} Maximum Temperature 88°

Initial Hydrostatic Pressure (A) 1360 P.S.I.

Initial Flow Period Minutes 30 (B) 11 P.S.I. to (C) 14 P.S.I.

Initial Closed In Period Minutes 75 (D) Invalid P.S.I.

Final Flow Period Minutes 30 (E) 14 P.S.I. to (F) 16 P.S.I.

Final Closed In Period Minutes 60 (G) Invalid P.S.I.

Final Hydrostatic Pressure (H) Invalid P.S.I.

GENERAL INFORMATION

Client Information:

Company: TRANS PACIFIC OIL CORPORATION

Contact: ALAN BANTA

Phone: Fax: e-mail:

Site Information:

Contact: BRYCE BIDLEMAN

Phone: Fax: e-mail:

Well Information:

Name: HANSEN FOUNDATION 'B' #1-12

Operator: TRANS PACIFIC OIL CORPORATION

Location-Downhole: DST #1 UPPER TOPEKA 2,929' - 2,940'

Location-Surface: SEC 12-6S-18W ROOKS COUNTY

Test Information:

Company: DIAMOND TESTING

Representative: ROGER D. FRIEDLY

Supervisor: BRYCE BIDLEMAN

Test Type: CONVENTIONAL Job Number:

Test Unit: NO. 1

Start Date: 2007/05/04 Start Time: 01:20:00

End Date: 2007/05/04 End Time: 08:39:00

Report Date: Prepared By:

Remarks: Qualified By:

TOOL SLIDING 8'-10- TO BOTTOM- TOOL SLIDING ON TURNING AND SHUT-IN
RECOVERED: 20' DM WITH A FEW OIL SPECKS

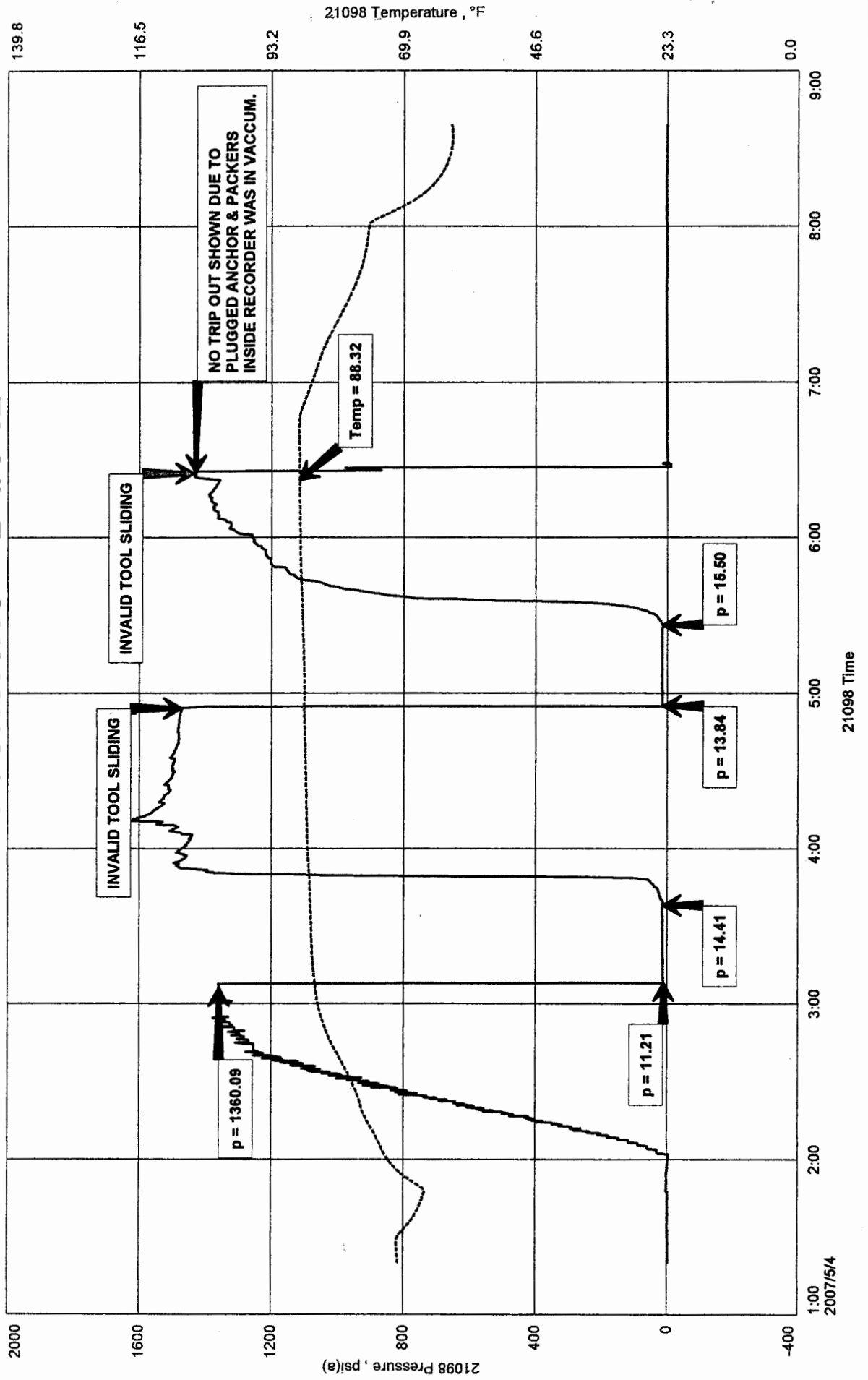
TOOL SAMPLE : 100% DM WITH GOOD OIL SPOTS

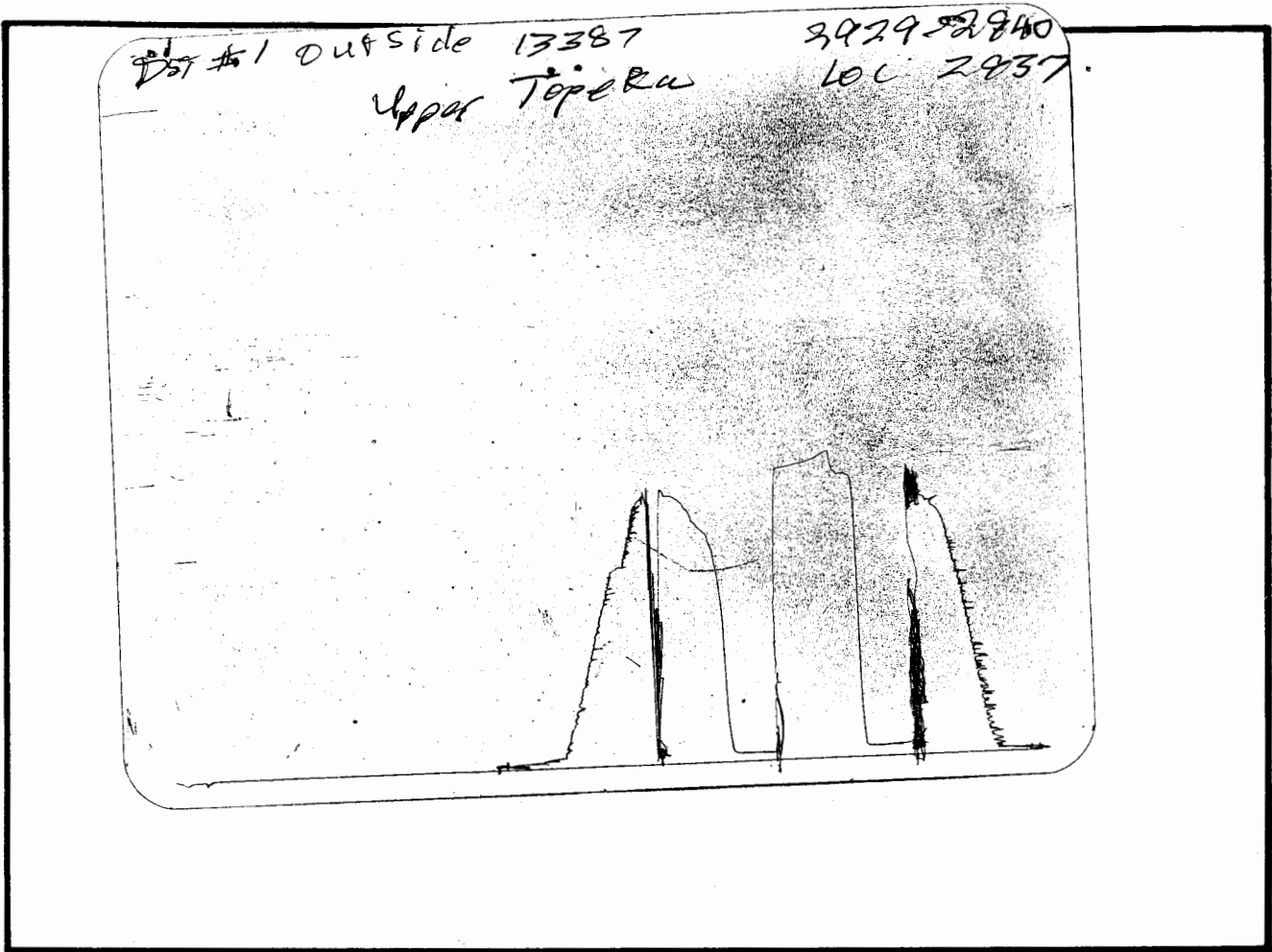
ANCHOR & PACKERS WITH HEAVY, HEAVY MUD AND SOME CUTTINGS.

TRANS PACIFIC OIL CORPORATION
DST #1 UPPER TOPEKA 2,929' - 2,940'
Start Test Date: 2007/05/04
Final Test Date: 2007/05/04

HANSEN FOUNDATION 'B' #1-12
Formation: DST #1 UPPER TOPEKA 2,929' - 2,940'
Pool: WILDCAT

HANSEN FOUNDATION 'B' #1-12





This is an actual photograph of recorder chart.

POINT	PRESSURE		PSI
	Field Reading	Elec. Office Reading	
(A) Initial Hydrostatic Mud	1360	1360	PSI
(B) First Initial Flow Pressure.....	11	11	PSI
(C) First Final Flow Pressure	14	14	PSI
(D) Initial Closed-in Pressure	Invalid	Invalid	PSI
(E) Second Initial Flow Pressure	14	14	PSI
(F) Second Final Flow Pressure.....	16	16	PSI
(G) Final Closed-in Pressure.....	Invalid	Invalid	PSI
(H) Final Hydrostatic Mud.....	Invalid	Invalid	PSI



DIAMOND TESTING

P.O. Box 157

HOISINGTON, KANSAS 67544

(620) 653-7550 • (800) 542-7313
STC 21098.d421

Company Trans Pacific Oil Corporation Lease & Well No Hansen Foundation "B" # 1-12

Elevation 1968 KB Formation Upper Topeka Effective Pay Ft. Ticket No. 2303

Date 5-04-07 Sec. 12 Twp. 6S Range 18W County Rooks State Kansas

Test Approved By W. Bryce Bidleman Diamond Representative Roger D. Friedly

Formation Test No. 2 Interval Tested from 2,922 ft. to 2,940 ft. Total Depth 2,940 ft.

Packer Depth 2,917 ft. Size 6 3/4 in. Packer Depth ft. Size in.

Packer Depth 2,922 ft. Size 6 3/4 in. Packer Depth ft. Size in.

Depth of Selective Zone Set ft.

Top Recorder Depth (Inside) 2,910 ft. Recorder Number 21098 Cap. 5,000 psi

Bottom Recorder Depth (Outside) 2,937 ft. Recorder Number 13387 Cap. 4,000 psi

Below Straddle Recorder Depth ft. Recorder Number Cap. psi

Drilling Contractor Shields Drilling Company, Inc. - Rig 1 Drill Collar Length ft. I.D. in.

Mud Type Chemical Viscosity 55 Weight Pipe Length 315 ft. I.D. 2 7/8 in.

Weight 9.0 Water Loss 8.0 cc. Drill Pipe Length 2,582 ft. I.D. 3 1/2 in.

Chlorides 1,800 P.P.M. Test Tool Length 25 ft. Tool Size 3 1/2 - IF in.

Jars: Make Bowen Serial Number Not Run Anchor Length 18 ft. Size 4 1/2 - FH in.

Did Well Flow? No Reversed Out No Surface Choke Size 1 in. Bottom Choke Size 5/8 in.

Main Hole Size 7 7/8 in. Tool Joint Size 4 1/2 - XH in.

Blow: 1st Open: Weak, 1/8 in., blow throughout. No blow back during shut-in.

2nd Open: No blow. No blow back during shut-in.

Recovered 5 ft. of drilling mud with a few oil specks = .040150 bbls.

Recovered ft. of

Recovered ft. of

Recovered ft. of

Recovered ft. of

Remarks Tool Sample Grind Out: 100%-drilling mud with some free oil on top

Hit bridge 7 1/2 stands off bottom stopping electronic recorder.

Time Set Packer(s) 4:28 ^{Y.M.} P.M. Time Started Off Bottom 7:28 ^{Y.M.} P.M. Maximum Temperature 87°

Initial Hydrostatic Pressure (A) 1406 P.S.I.

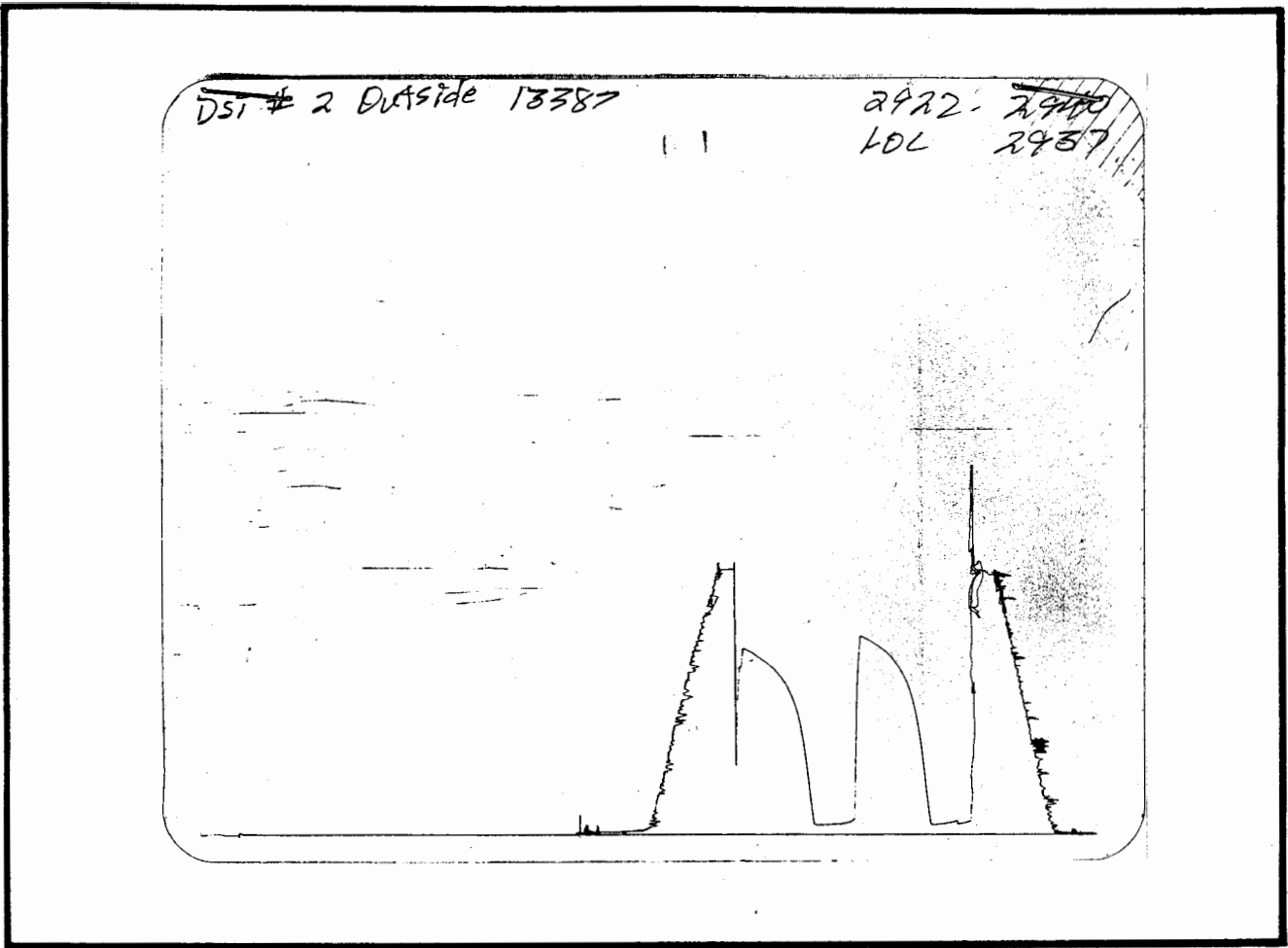
Initial Flow Period Minutes 30 (B) 62 P.S.I. to (C) 52 P.S.I.

Initial Closed In Period Minutes 60 (D) 1066 P.S.I.

Final Flow Period Minutes 30 (E) 83 P.S.I. to (F) 72 P.S.I.

Final Closed In Period Minutes 60 (G) 1006 P.S.I.

Final Hydrostatic Pressure (H) 1434 P.S.I.



This is an actual photograph of recorder chart.

POINT	PRESSURE		
	Field Reading	Office Reading	
(A) Initial Hydrostatic Mud	1406	1406	PSI
(B) First Initial Flow Pressure.....	62	62	PSI
(C) First Final Flow Pressure	52	52	PSI
(D) Initial Closed-in Pressure	1066	1066	PSI
(E) Second Initial Flow Pressure	83	83	PSI
(F) Second Final Flow Pressure.....	72	72	PSI
(G) Final Closed-in Pressure.....	1006	1006	PSI
(H) Final Hydrostatic Mud	1434	1434	PSI



DIAMOND TESTING

P.O. Box 157
HOISINGTON, KANSAS 67544
(620) 653-7550 • (800) 542-7313
STC 30035.d422

Company Trans Pacific Oil Corporation Lease & Well No. Hansen Foundation "B" # 1-12
Elevation 1968 KB Formation Oread Effective Pay -- Ft. Ticket No. 2304
Date 5-05-07 Sec. 12 Twp. 6S Range 18W County Rooks State Kansas
Test Approved By W. Bryce Bidleman Diamond Representative Roger D. Friedly

Formation Test No. 3 Interval Tested from 3,040 ft. to 3,075 ft. Total Depth 3,075 ft.
Packer Depth 3,035 ft. Size 6 3/4 in. Packer Depth -- ft. Size -- in.
Packer Depth 3,040 ft. Size 6 3/4 in. Packer Depth -- ft. Size -- in.
Depth of Selective Zone Set -- ft.

Top Recorder Depth (Inside) 3,028 ft. Recorder Number 30035 Cap. 5,000 psi
Bottom Recorder Depth (Outside) 3,072 ft. Recorder Number 13387 Cap. 4,000 psi
Below Straddle Recorder Depth -- ft. Recorder Number -- Cap. -- psi

Drilling Contractor Shields Drilling Company, Inc. - Rig 1 Drill Collar Length -- ft. I.D. -- in.
Mud Type Chemical Viscosity 50 Weight Pipe Length 315 ft. I.D. 2 7/8 in.
Weight 9.0 Water Loss 8.0 cc. Drill Pipe Length 2,700 ft. I.D. 3 1/2 in.
Chlorides 1,800 P.P.M. Test Tool Length 25 ft. Tool Size 3 1/2 - IF in.
Jars: Make Bowen Serial Number Not Run Anchor Length 35 ft. Size 4 1/2 - FH in.
Did Well Flow? No Reversed Out No Surface Choke Size 1 in. Bottom Choke Size 5/8 in.
Main Hole Size 7 7/8 in. Tool Joint Size 4 1/2 - XH in.

Blow: * 1st Open: Weak surface blow throughout. No blow back during shut-in.
2nd Open: No blow. No blow back during shut-in.

Recovered 252 ft. of drilling mud due to tool opening & sliding to bottom = 2.023560 bbls.
Recovered -- ft. of --
Recovered -- ft. of --
Recovered -- ft. of --
Recovered -- ft. of --

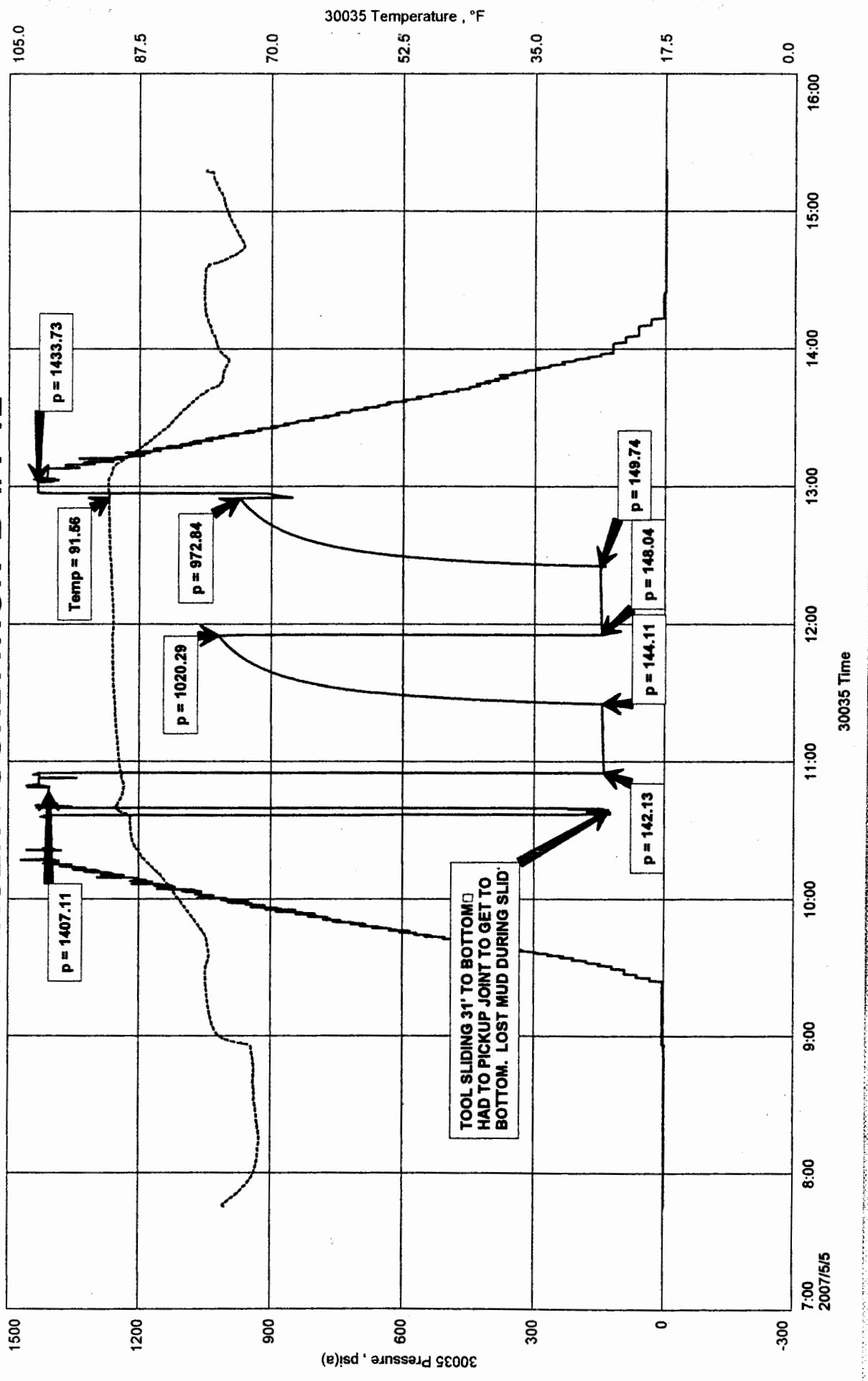
Remarks Tool Sample Grind Out: 100%-drilling mud with a good show of oil on top
* Tool slid 31' to bottom. Had to pick up & reset to get to bottom.

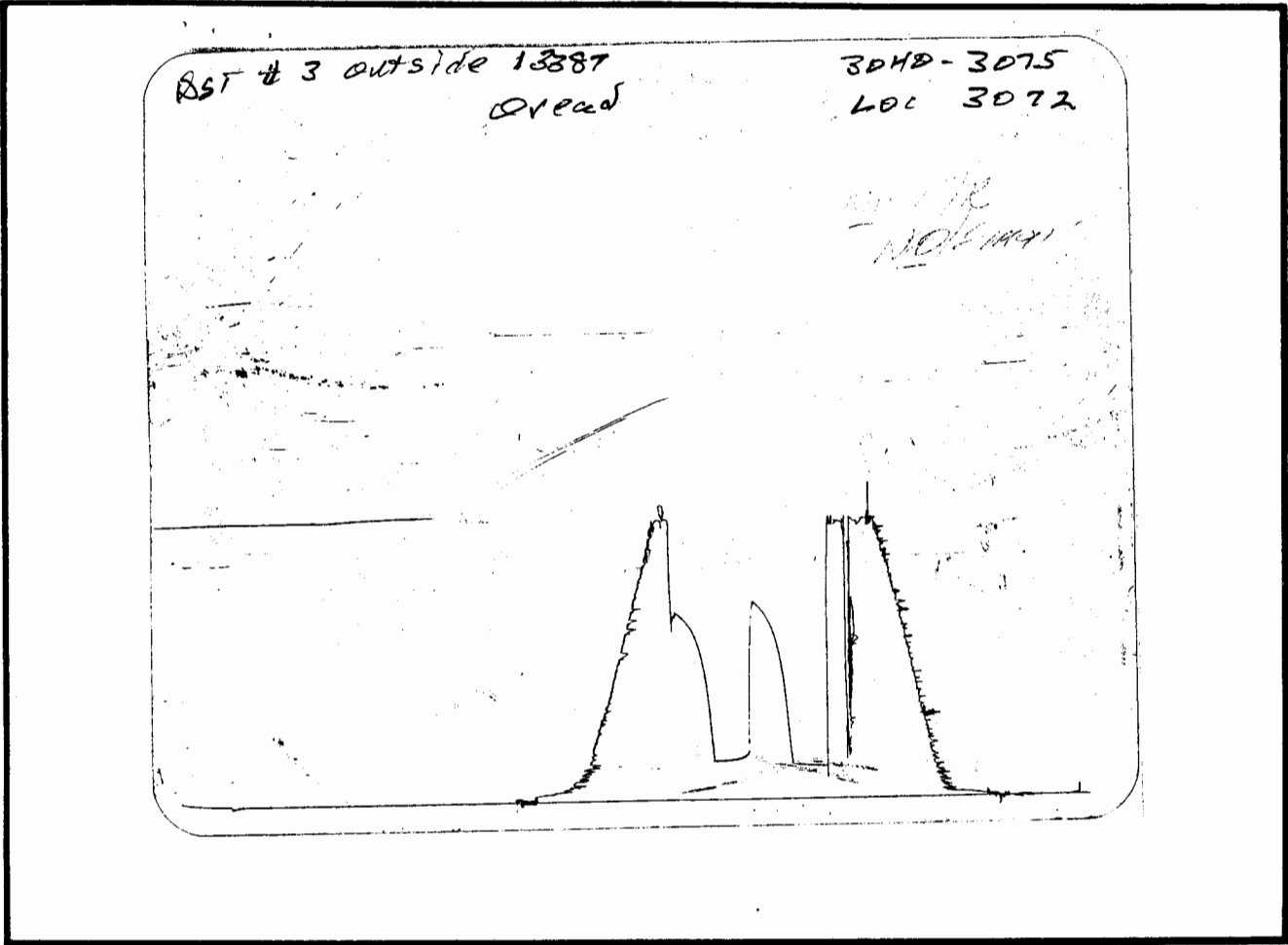
Time Set Packer(s) 10:55 ~~XXX~~ ^{A.M.} Time Started Off Bottom 12:55 ~~XXX~~ ^{P.M.} Maximum Temperature 92°
Initial Hydrostatic Pressure (A) 1407 P.S.I.
Initial Flow Period Minutes 30 (B) 142 P.S.I. to (C) 144 P.S.I.
Initial Closed In Period Minutes 30 (D) 1020 P.S.I.
Final Flow Period Minutes 30 (E) 148 P.S.I. to (F) 150 P.S.I.
Final Closed In Period Minutes 30 (G) 973 P.S.I.
Final Hydrostatic Pressure (H) 1434 P.S.I.

TRANS PACIFIC OIL CORPORATION
 DST #3 OREAD 3,040' - 3,075'
 Start Test Date: 2007/05/05
 Final Test Date: 2007/05/05

HANSEN FOUNDATION 'B' #1-12
 Formation: DST #3 OREAD 3,040' - 3,075'
 Pool: WILDCAT

HANSEN FOUNDATION 'B' #1-12





This is an actual photograph of recorder chart.

POINT	PRESSURE		Elec. Office Reading	PSI
	Field Reading	Office Reading		
(A) Initial Hydrostatic Mud	1407	1407		PSI
(B) First Initial Flow Pressure.....	142	142		PSI
(C) First Final Flow Pressure	144	144		PSI
(D) Initial Closed-in Pressure	1020	1020		PSI
(E) Second Initial Flow Pressure	148	148		PSI
(F) Second Final Flow Pressure.....	150	150		PSI
(G) Final Closed-in Pressure.....	973	973		PSI
(H) Final Hydrostatic Mud	1434	1434		PSI



DIAMOND TESTING

P.O. Box 157
HOISINGTON, KANSAS 67544
(620) 653-7550 • (800) 542-7313
STC 30035.d422

Company Trans Pacific Oil Corporation Lease & Well No Hansen Foundation "B" # 1-12

Elevation 1968 KB Formation Lansing/Kansas City 35' Effective Pay -- Ft. Ticket No. 2305

Date 5-06-07 Sec. 12 Twp. 6S Range 18W County Rooks State Kansas

Test Approved By W. Bryce Bidleman Diamond Representative Roger D. Friedly

Formation Test No. 4 Interval Tested from 3,140 ft. to 3,207 ft. Total Depth 3,207 ft.

Packer Depth 3,135 ft. Size 6 3/4 in. Packer Depth -- ft. Size -- in.

Packer Depth 3,140 ft. Size 6 3/4 in. Packer Depth -- ft. Size -- in.

Depth of Selective Zone Set ft.

Top Recorder Depth (Inside) 3,128 ft. Recorder Number 30035 Cap. 5,000 psi

Bottom Recorder Depth (Outside) 3,204 ft. Recorder Number 13387 Cap. 4,000 psi

Below Straddle Recorder Depth ft. Recorder Number Cap. psi

Drilling Contractor Shields Drilling Company, Inc. - Rig 1 Drill Collar Length -- ft. I.D. -- in.

Mud Type Chemical Viscosity 51 Weight Pipe Length 315 ft. I.D. 2 7/8 in.

Weight 9.1 Water Loss 8.0 cc. Drill Pipe Length 2,800 ft. I.D. 3 1/2 in.

Chlorides 2,100 P.P.M. Test Tool Length 25 ft. Tool Size 3 1/2 - IF in.

Jars: Make Bowen Serial Number Not Run Anchor Length 36' perf. w/31' drill pipe Size 4 1/2 - FH in.

Did Well Flow? No Reversed Out No Surface Choke Size 1 in. Bottom Choke Size 5/8 in.

Main Hole Size 7 7/8 in. Tool Joint Size 4 1/2 - XH in.

Blow: * 1st Open: Weak, 1/8 in., blow increasing to 2 ins. No blow back during shut-in.

2nd Open: Weak, surface blow in 8 mins. increasing to 2 ins. No blow back during shut-in.

Recovered 93 ft. of gas in pipe

Recovered 10 ft. of clean oil = .080300 bbls. (Gravity: 40.8 @ 60°)

Recovered 211 ft. of gas & oil cut mud = 1.694330 bbls. (Grind out: 4%-gas; 6%-oil; 90%-mud)

Recovered 221 ft. of TOTAL FLUID = 1.774630 bbls.

Recovered ft. of

Remarks Tool Sample Grind Out: 7%-gas; 10%-oil; 20%-water; 63%-mud (Chlorides: 13,000 Ppm)

* Tool slid 18' to 20'. Had to pick up & reset.

Time Set Packer(s) 5:29 ^{A.M.}/_{P.M.} Time Started Off Bottom 9:44 ^{A.M.}/_{P.M.} Maximum Temperature 93°

Initial Hydrostatic Pressure (A) 1490 P.S.I.

Initial Flow Period Minutes 30 (B) 68 P.S.I. to (C) 91 P.S.I.

Initial Closed In Period Minutes 75 (D) 1106 P.S.I.

Final Flow Period Minutes 60 (E) 94 P.S.I. to (F) 116 P.S.I.

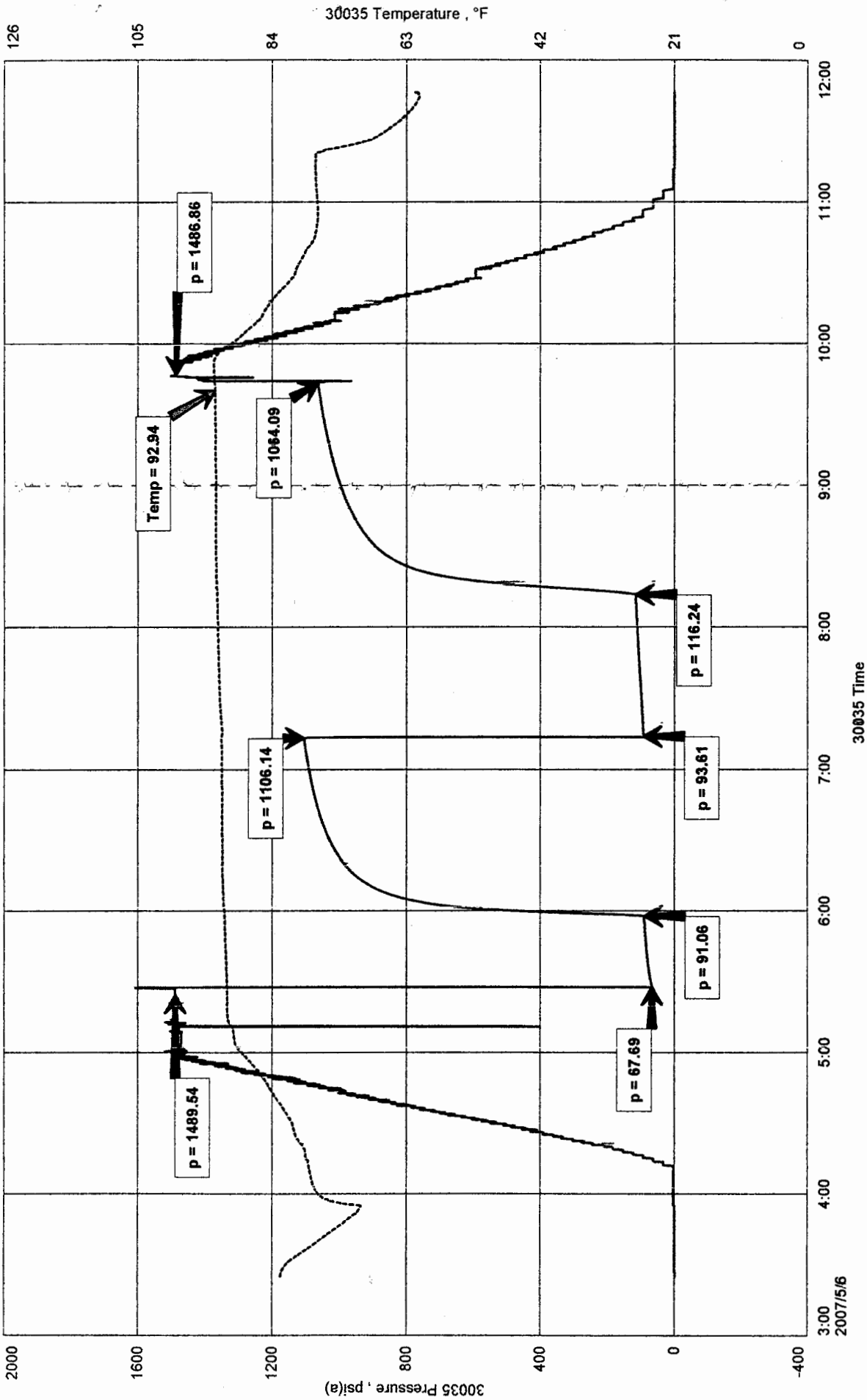
Final Closed In Period Minutes 90 (G) 1064 P.S.I.

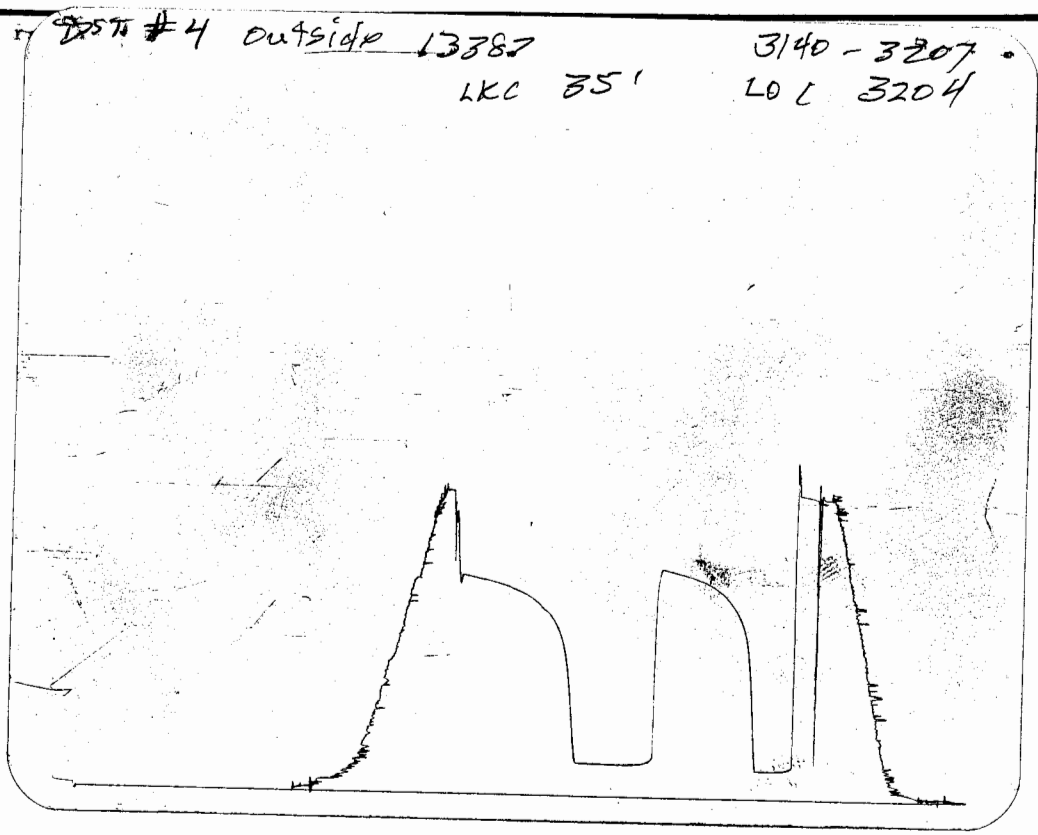
Final Hydrostatic Pressure (H) 1487 P.S.I.

TRANS PACIFIC OIL CORPORATION
 DST #4 LKC 35' 3,140' - 3,207'
 Start Test Date: 2007/05/06
 Final Test Date: 2007/05/06

HANSEN FOUNDATION 'B' #1-12
 Formation: DST #4 LKC 35' 3,140' - 3,207'
 Pool: WILDCAT

HANSEN FOUNDATION 'B' #1-12





This is an actual photograph of recorder chart.

POINT	PRESSURE		PSI
	Field Reading	Elec. Office Reading	
(A) Initial Hydrostatic Mud	1490	1490	PSI
(B) First Initial Flow Pressure.....	68	68	PSI
(C) First Final Flow Pressure	91	91	PSI
(D) Initial Closed-in Pressure	1106	1106	PSI
(E) Second Initial Flow Pressure	94	94	PSI
(F) Second Final Flow Pressure.....	116	116	PSI
(G) Final Closed-in Pressure.....	1064	1064	PSI
(H) Final Hydrostatic Mud	1487	1487	PSI



DIAMOND TESTING

P.O. Box 157
HOISINGTON, KANSAS 67544
(620) 653-7550 • (800) 542-7313
STC 30035.d423

Page 1 of 2 Pages

Company Trans Pacific Oil Corporation Lease & Well No Hansen Foundation "B" # 1-12
Elevation 1968 KB Formation Lansing/Kansas City 50'-70' Zones Effective Pay -- Ft. Ticket No. 2306
Date 5-07-07 Sec. 12 Twp. 6S Range 18W County Rooks State Kansas
Test Approved By W. Bryce Bidleman Diamond Representative Roger D. Friedly

Formation Test No. 5 Interval Tested from 3,205 ft. to 3,250 ft. Total Depth 3,250 ft.
Packer Depth 3,200 ft. Size 6 3/4 in. Packer Depth -- ft. Size -- in.
Packer Depth 3,205 ft. Size 6 3/4 in. Packer Depth -- ft. Size -- in.
Depth of Selective Zone Set ft.

Top Recorder Depth (Inside) 3,193 ft. Recorder Number 30035 Cap. 5,000 psi
Bottom Recorder Depth (Outside) 3,247 ft. Recorder Number 13387 Cap. 4,000 psi
Below Straddle Recorder Depth ft. Recorder Number Cap. psi

Drilling Contractor Shields Drilling Company, Inc. - Rig 1 Drill Collar Length -- ft. I.D. -- in.
Mud Type Chemical Viscosity 50 Weight Pipe Length 315 ft. I.D. 2 7/8 in.
Weight 9.2 Water Loss 8.8 cc. Drill Pipe Length 2,865 ft. I.D. 3 1/2 in.
Chlorides 3,200 P.P.M. Test Tool Length 25 ft. Tool Size 3 1/2 - IF in.
Jars: Make Bowen Serial Number Not Run Anchor Length 45 ft. Size 4 1/2 - FH in.
Did Well Flow? No Reversed Out No Surface Choke Size 1 in. Bottom Choke Size 5/8 in.
Main Hole Size 7 7/8 in. Tool Joint Size 4 1/2 - XH in.

Blow: 1st Open: Weak, 1/2 in., blow increasing to 6 ins. No blow back during shut-in.
2nd Open: Weak, 1/2 in., blow increasing. Off bottom of bucket in 40 mins. Weak, surface blow back during shut-in.
Died.

Recovered 230 ft. of gas in pipe
Recovered 136 ft. of clean oil = 1.092080 bbls. (Gravity: 39.6 @ 60°)
Recovered 73 ft. of gas & heavy oil cut mud = .586190 bbls. (Grind out: 7%-gas; 42%-oil; 51%-mud)
Recovered 209 ft. of TOTAL FLUID = 1.678270 bbls.

Recovered ft. of
Remarks Tool Sample Grind Out: 2%-gas; 40%-oil; 58%-mud

Time Set Packer(s) 12:14 ^{A.M.}/_{P.M.} Time Started Off Bottom 4:29 ^{A.M.}/_{P.M.} Maximum Temperature 92°
Initial Hydrostatic Pressure (A) 1527 P.S.I.
Initial Flow Period Minutes 30 (B) 11 P.S.I. to (C) 46 P.S.I.
Initial Closed In Period Minutes 75 (D) 956 P.S.I.
Final Flow Period Minutes 60 (E) 51 P.S.I. to (F) 87 P.S.I.
Final Closed In Period Minutes 90 (G) 917 P.S.I.
Final Hydrostatic Pressure (H) 1523 P.S.I.

GENERAL INFORMATION

Client Information:

Company: TRANS PACIFIC OIL CORPORATION

Contact: ALAN BANTA

Phone: Fax: e-mail:

Site Information:

Contact: BRYCE BIDLEMAN

Phone: Fax: e-mail:

Well Information:

Name: HANSEN FOUNDATION 'B' #1-12

Operator: TRANS PACIFIC OIL CORPORATION

Location-Downhole: DST #5 LKC 50' - 70' ZONES 3,205' - 3,250'

Location-Surface: SEC 12-6S-18W ROOKS COUNTY

Test Information:

Company: DIAMOND TESTING

Representative: ROGER D. FRIEDLY

Supervisor: BRYCE BIDLEMAN

Test Type: CONVENTIONAL Job Number:

Test Unit: NO. 1

Start Date: 2007/05/06 Start Time: 22:25:00

End Date: 2007/05/07 End Time: 06:59:00

Report Date: Prepared By:

Remarks: Qualified By:

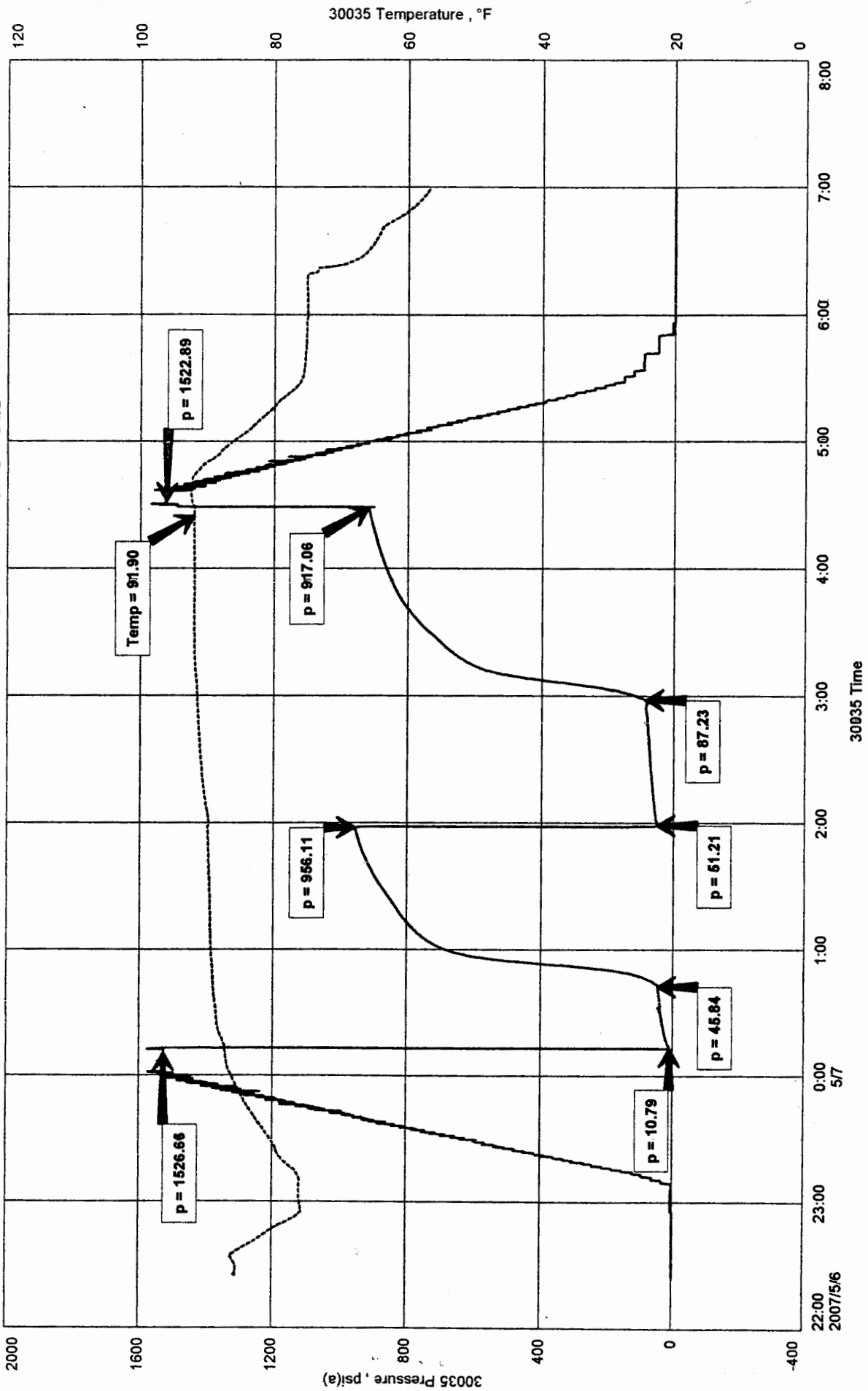
RECOVERED: 230' GAS IN PIPE
136' CLEAN OIL 39.6 GRAVITY @ 60 deg.
73' G&HOCM 7% GAS, 42% OIL, 51% MUD
209' TOTAL FLUID

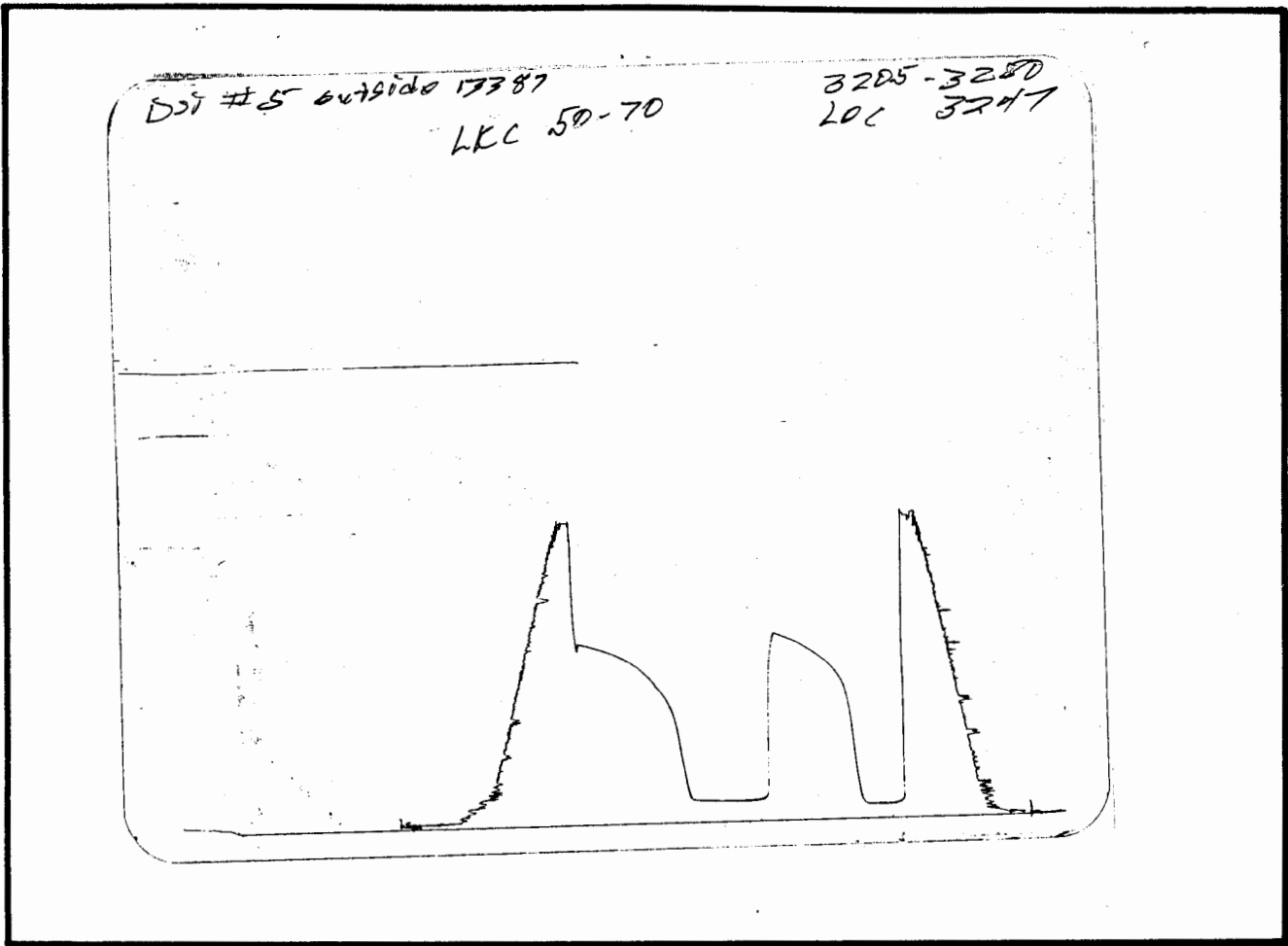
TOOL SAMPLE: 2% GAS, 40% OIL, 58% MUD

TRANS PACIFIC OIL CORPORATION
 DST #5 LKC 50' - 70' ZONES 3,205' - 3,250'
 Start Test Date: 2007/05/06
 Final Test Date: 2007/05/07

HANSEN FOUNDATION 'B' #1-12
 Formation: DST #5 LKC 50' - 70' ZONES 3,205' - 3,250'
 Pool: WILDCAT

HANSEN FOUNDATION 'B' #1-12





This is an actual photograph of recorder chart.

POINT	PRESSURE		
	Field Reading	Elec. Office Reading	
(A) Initial Hydrostatic Mud	1527	1527	PSI
(B) First Initial Flow Pressure.....	11	11	PSI
(C) First Final Flow Pressure	46	46	PSI
(D) Initial Closed-in Pressure	956	956	PSI
(E) Second Initial Flow Pressure.....	51	51	PSI
(F) Second Final Flow Pressure.....	87	87	PSI
(G) Final Closed-in Pressure.....	917	917	PSI
(H) Final Hydrostatic Mud	1523	1523	PSI



DIAMOND TESTING

P.O. Box 157
HOISINGTON, KANSAS 67544
(620) 653-7550 • (800) 542-7313
STC 30035.d424

Company Trans Pacific Oil Corporation Lease & Well No. Hansen Foundation "B" # 1-12

Elevation 1968 KB Formation Lansing/Kansas City 100' Effective Pay -- Ft. Ticket No. 2307

Date 5-07-07 Sec. 12 Twp. 6S Range 18W County Rooks State Kansas

Test Approved By W. Bryce Bidleman Diamond Representative Roger D. Friedly

Formation Test No. 6 Interval Tested from 3,250 ft. to 3,265 ft. Total Depth 3,265 ft.

Packer Depth 3,245 ft. Size 6 3/4 in. Packer Depth -- ft. Size -- in.

Packer Depth 3,250 ft. Size 6 3/4 in. Packer Depth -- ft. Size -- in.

Depth of Selective Zone Set ft.

Top Recorder Depth (Inside) 3,238 ft. Recorder Number 30035 Cap. 5,000 psi

Bottom Recorder Depth (Outside) 3,262 ft. Recorder Number 13387 Cap. 4,000 psi

Below Straddle Recorder Depth ft. Recorder Number Cap. psi

Drilling Contractor Shields Drilling Company, Inc. - Rig 1 Drill Collar Length -- ft. I.D. -- in.

Mud Type Chemical Viscosity 51 Weight Pipe Length 315 ft. I.D. 2 7/8 in.

Weight 9.1 Water Loss 8.0 cc. Drill Pipe Length 2,910 ft. I.D. 3 1/2 in.

Chlorides 2,100 P.P.M. Test Tool Length 25 ft. Tool Size 3 1/2 - IF in.

Jars: Make Bowen Serial Number Not Run Anchor Length 15 ft. Size 4 1/2 - FH in.

Did Well Flow? No Reversed Out No Surface Choke Size 1 in. Bottom Choke Size 5/8 in.

Main Hole Size 7 7/8 in. Tool Joint Size 4 1/2 - XH in.

Blow: 1st Open: Bled off. Slid. Weak, surface blow increasing to 1/2 in. No blow back during shut-in.

2nd Open: No blow. Flushed tool. No surge. No help. No blow. No blow back during shut-in.

Recovered 90 ft. of drilling mud = .722700 bbls.

Recovered ft. of

Recovered ft. of

Recovered ft. of

Recovered ft. of

Remarks Tool Sample Grind Out: 100%-drilling mud with a good show of free oil on top.

Tool slid 10' to 12' & stopped 4' to 5' off bottom. Tool plugged off. Packer torn up due to hole condition.

Time Set Packer(s) 3:44 ^{AXM.} P.M. Time Started Off Bottom 6:14 ^{AXM.} P.M. Maximum Temperature 91°

Initial Hydrostatic Pressure (A) 1538 P.S.I. Plugged

Initial Flow Period Minutes 30 (B) 65 P.S.I. to (C) 735 P.S.I.

Initial Closed In Period Minutes 60 (D) 1024 P.S.I. Plugged

Final Flow Period Minutes 30 (E) Plugged P.S.I. to (F) -- P.S.I.

Final Closed In Period Minutes 30 (G) Plugged P.S.I.

Final Hydrostatic Pressure (H) 1537 P.S.I.

GENERAL INFORMATION

Client Information:

Company: TRANS PACIFIC OIL CORPORATION
Contact: ALAN BANTA
Phone: Fax: e-mail:

Site Information:

Contact: BRYCE BIDLEMAN
Phone: Fax: e-mail:

Well Information:

Name: HANSEN FOUNDATION 'B' # 1-12
Operator: TRANS PACIFIC OIL CORPORATION
Location-Downhole: DST #6 LKC 100' 3,250' - 3,265'
Location-Surface: SEC 12-6S-18W ROOKS COUNTY

Test Information:

Company: DIAMOND TESTING
Representative: ROGER D. FRIEDLY
Supervisor: BRYCE BIDLEMAN
Test Type: CONVENTIONAL Job Number:
Test Unit: NO. 1
Start Date: 2007/05/07 Start Time: 13:33:00
End Date: 2007/05/07 End Time: 20:12:00
Report Date: Prepared By:
Remarks: Qualified By:

RECOVERED: 90' DRILLING MUD

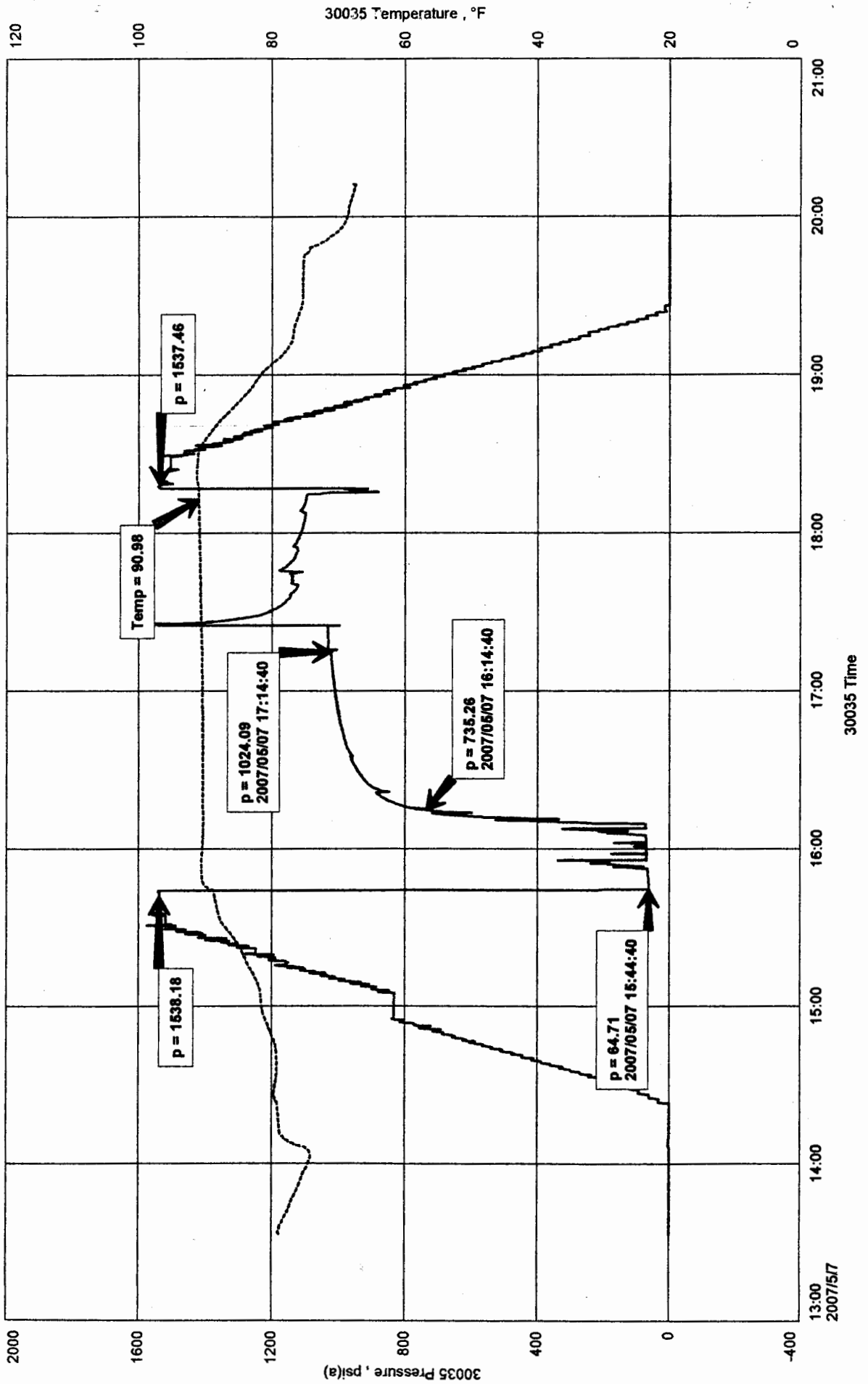
TOOL SAMPLE: 100% DM WITH A GOOD SHOW OF FREE OIL ON TOP

TOOL SLID 10'-12' AND STOPPED 4'-5' OFF BOTTOM. TOOL PLUGGED OFF

TRANS PACIFIC OIL CORPORATION
DST #6 LKC 100' 3,250' - 3,265'
Start Test Date: 2007/05/07
Final Test Date: 2007/05/07

HANSEN FOUNDATION 'B' # 1-12
Formation: DST #6 LKC 100' 3,250' - 3,265'
Pool: WILDCAT

HANSEN FOUNDATION 'B' # 1-12



DST # 6 outside 13387
LCC 100'

325D-3265
LDC 3262



This is an actual photograph of recorder chart.

POINT	PRESSURE		Elec. Office Reading	PSI
	Field Reading	Office Reading		
(A) Initial Hydrostatic Mud	1538	1538		PSI
(B) First Initial Flow Pressure	65	65		PSI
(C) First Final Flow Pressure	Plugged 735	Plugged 735		PSI
(D) Initial Closed-in Pressure	1024	1024		PSI
(E) Second Initial Flow Pressure	Plugged	Plugged		PSI
(F) Second Final Flow Pressure	Plugged	Plugged		PSI
(G) Final Closed-in Pressure	Plugged	Plugged		PSI
(H) Final Hydrostatic Mud	1537	1537		PSI



DIAMOND TESTING

P.O. Box 157
HOISINGTON, KANSAS 67544
(620) 653-7550 • (800) 542-7313
STC 30035.d425

Company Trans Pacific Oil Corporation Lease & Well No Hansen Foundation "B" # 1-12
Elevation 1968 KB Formation Lansing/Kansas City 160' Effective Pay -- Ft. Ticket No. 2308
Date 5-08-07 Sec. 12 Twp. 6S Range 18W County Rooks State Kansas
Test Approved By W. Bryce Bidleman Diamond Representative Roger D. Friedly

Formation Test No. 7 Interval Tested from 3,295 ft. to 3,320 ft. Total Depth 3,320 ft.

Packer Depth 3,290 ft. Size 6 3/4 in. Packer Depth -- ft. Size -- in.

Packer Depth 3,295 ft. Size 6 3/4 in. Packer Depth -- ft. Size -- in.

Depth of Selective Zone Set ft.

Top Recorder Depth (Inside) 3,283 ft. Recorder Number 30035 Cap. 5,000 psi

Bottom Recorder Depth (Outside) 3,317 ft. Recorder Number 13387 Cap. 4,000 psi

Below Straddle Recorder Depth ft. Recorder Number Cap. psi

Drilling Contractor Shields Drilling Company, Inc. - Rig 1 Drill Collar Length -- ft. I.D. -- in.

Mud Type Chemical Viscosity 45 Weight Pipe Length 315 ft. I.D. 2 7/8 in.

Weight 9.1 Water Loss 8.0 cc. Drill Pipe Length 2,955 ft. I.D. 3 1/2 in.

Chlorides 2,100 P.P.M. Test Tool Length 25 ft. Tool Size 3 1/2 - IF in.

Jars: Make Bowen Serial Number Not Run Anchor Length 25 ft. Size 4 1/2 - FH in.

Did Well Flow? No Reversed Out No Surface Choke Size 1 in. Bottom Choke Size 5/8 in.

Main Hole Size 7 7/8 in. Tool Joint Size 4 1/2 - XH in.

Blow: 1st Open: Weak, 1/2 in., blow increasing to 1 1/2 ins. No blow back during shut-in.

2nd Open: Weak, surface blow in 12 mins. Increasing to 1 in. No blow back during shut-in.

Recovered 65 ft. of watery mud with a scum of oil = .521950 bbls. (Grind out: 29%-water; 71%-mud) Chlorides: 8,000 Ppm

Recovered ft. of

Recovered ft. of

Recovered ft. of

Recovered ft. of

Remarks Tool Sample Grind Out: 22%-water; 78%-mud with a scum of oil

Time Set Packer(s) 7:54 ~~P.M.~~ ^{A.M.} Time Started Off Bottom 11:09 ~~P.M.~~ ^{A.M.} Maximum Temperature 93°

Initial Hydrostatic Pressure (A) 1561 P.S.I.

Initial Flow Period Minutes 30 (B) 11 P.S.I. to (C) 23 P.S.I.

Initial Closed In Period Minutes 75 (D) 1135 P.S.I.

Final Flow Period Minutes 60 (E) 25 P.S.I. to (F) 40 P.S.I.

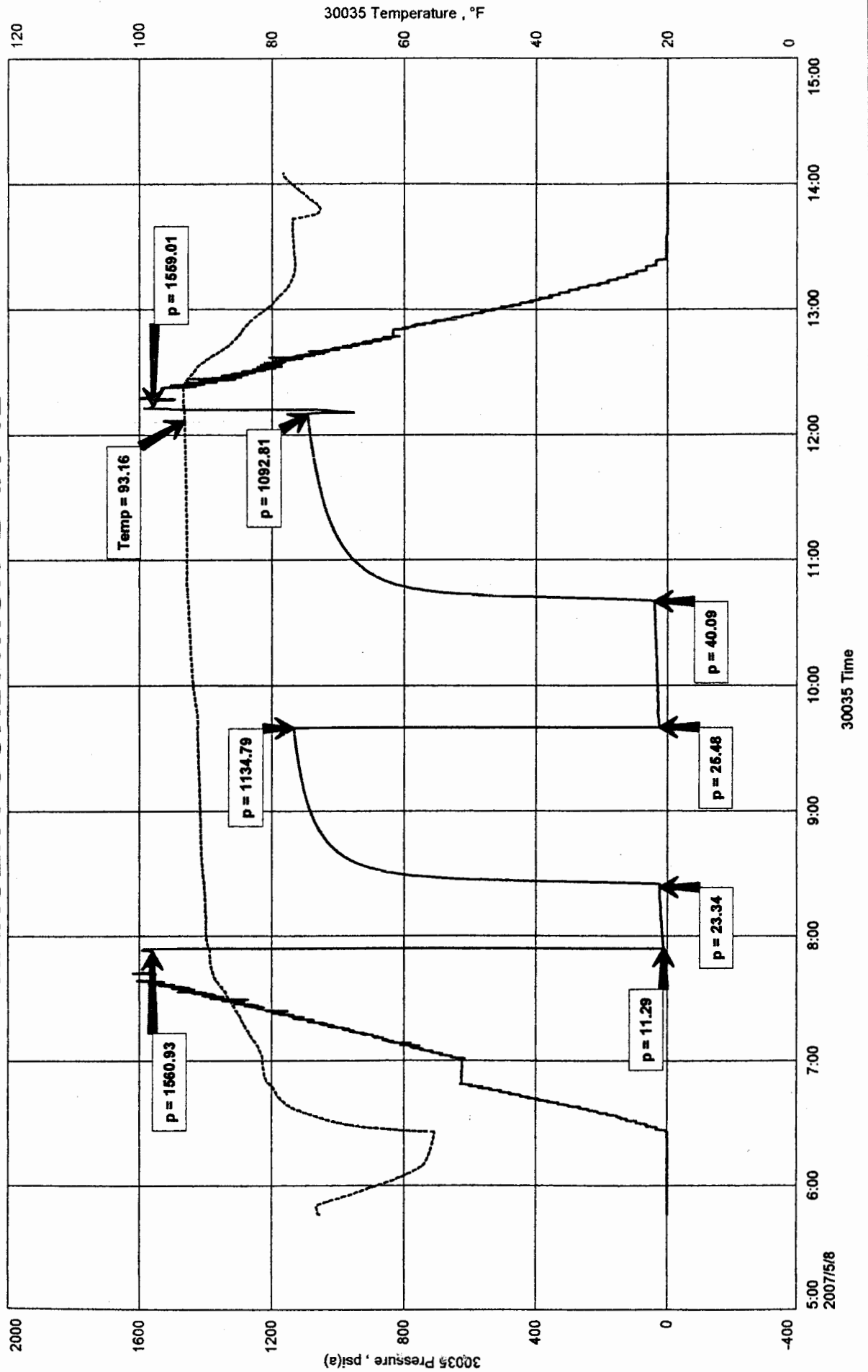
Final Closed In Period Minutes 90 (G) 1093 P.S.I.

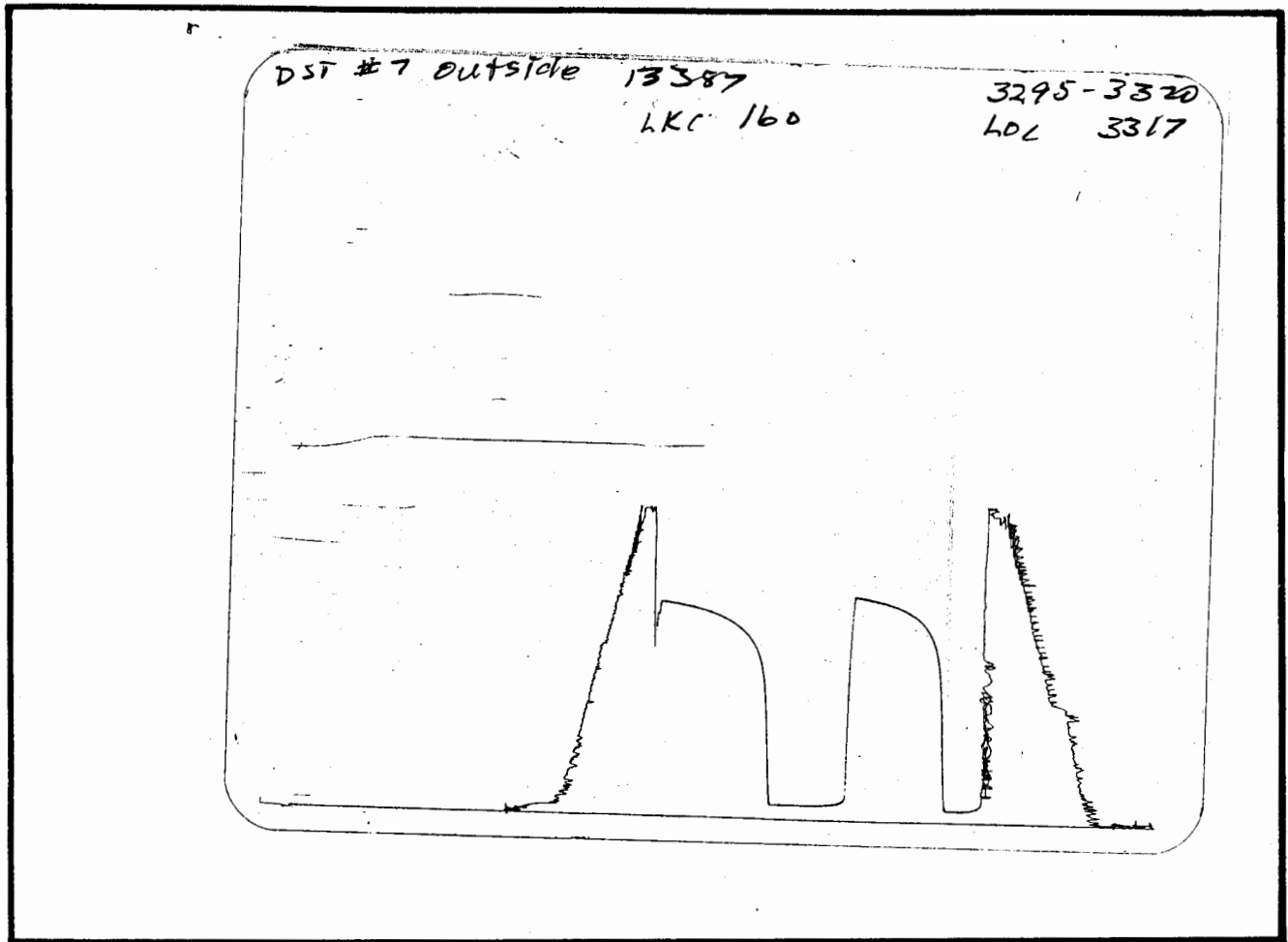
Final Hydrostatic Pressure (H) 1559 P.S.I.

TRANS PACIFIC OIL CORPORATION
DST #7 LKC 160' 3,295' - 3,320'
Start Test Date: 2007/05/08
Final Test Date: 2007/05/08

HANSEN FOUNDATION 'B' #1-12
Formation: DST #7 LKC 160' 3,295' - 3,320'
Pool: WILDCAT

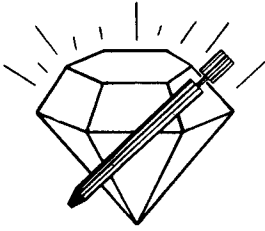
HANSEN FOUNDATION 'B' #1-12





This is an actual photograph of recorder chart.

POINT	PRESSURE		Elec. Office Reading	PSI
	Field Reading			
(A) Initial Hydrostatic Mud	1561		1561	PSI
(B) First Initial Flow Pressure.....	11		11	PSI
(C) First Final Flow Pressure	23		23	PSI
(D) Initial Closed-in Pressure	1135		1135	PSI
(E) Second Initial Flow Pressure	25		25	PSI
(F) Second Final Flow Pressure.....	40		40	PSI
(G) Final Closed-in Pressure.....	1093		1093	PSI
(H) Final Hydrostatic Mud.....	1559		1559	PSI



DIAMOND TESTING

P.O. Box 157

HOISINGTON, KANSAS 67544

(620) 653-7550 • (800) 542-7313

STC 30035.d426

Company Trans Pacific Oil Corporation Lease & Well No. Hansen Foundation "B" # 1-12
Elevation 1968 KB Formation Lansing/Kansas City 200'-220' Zones Effective Pay -- Ft. Ticket No. 2309
Date 5-09-07 Sec. 12 Twp. 6S Range 18W County Rooks State Kansas
Test Approved By W. Bryce Bidleman Diamond Representative Roger D. Friedly

Formation Test No. 8 Interval Tested from 3,336 ft. to 3,385 ft. Total Depth 3,385 ft.
Packer Depth 3,331 ft. Size 6 3/4 in. Packer Depth -- ft. Size -- in.
Packer Depth 3,336 ft. Size 6 3/4 in. Packer Depth -- ft. Size -- in.
Depth of Selective Zone Set -- ft.

Top Recorder Depth (Inside) 3,321 ft. Recorder Number 30035 Cap. 5,000 psi
Bottom Recorder Depth (Outside) 3,382 ft. Recorder Number 13387 Cap. 4,000 psi
Below Straddle Recorder Depth -- ft. Recorder Number -- Cap. -- psi

Drilling Contractor Shields Drilling Company, Inc. - Rig 1 Drill Collar Length -- ft. I.D. -- in.
Mud Type Chemical Viscosity 53 Weight Pipe Length 315 ft. I.D. 2 7/8 in.
Weight 9.1 Water Loss 8.0 cc. Drill Pipe Length 2,996 ft. I.D. 3 1/2 in.
Chlorides 2,100 P.P.M. Test Tool Length 25 ft. Tool Size 3 1/2 - IF in.
Jars: Make Bowen Serial Number Not Run Anchor Length 18' perf. w/31' drill pipe Size 4 1/2 - FH in.
Did Well Flow? No Reversed Out No Surface Choke Size 1 in. Bottom Choke Size 5/8 in.
Main Hole Size 7 7/8 in. Tool Joint Size 4 1/2 - XH in.

Blow: 1st Open: Weak, 1/2 in., blow increasing to 2 ins. No blow back during shut-in.
2nd Open: Weak, surface blow in 7 mins. Increasing to 2 ins. No blow back during shut-in.

Recovered 20 ft. of drilling mud with a few oil specks = .160600 bbls.
Recovered 63 ft. of muddy water with a few oil specks = .505890 bbls. (Grind out: 40%-mud; 60%-water)
Recovered 83 ft. of TOTAL FLUID = .666490 bbls. Chlorides: 12,000 Ppm
Recovered -- ft. of --
Recovered -- ft. of --

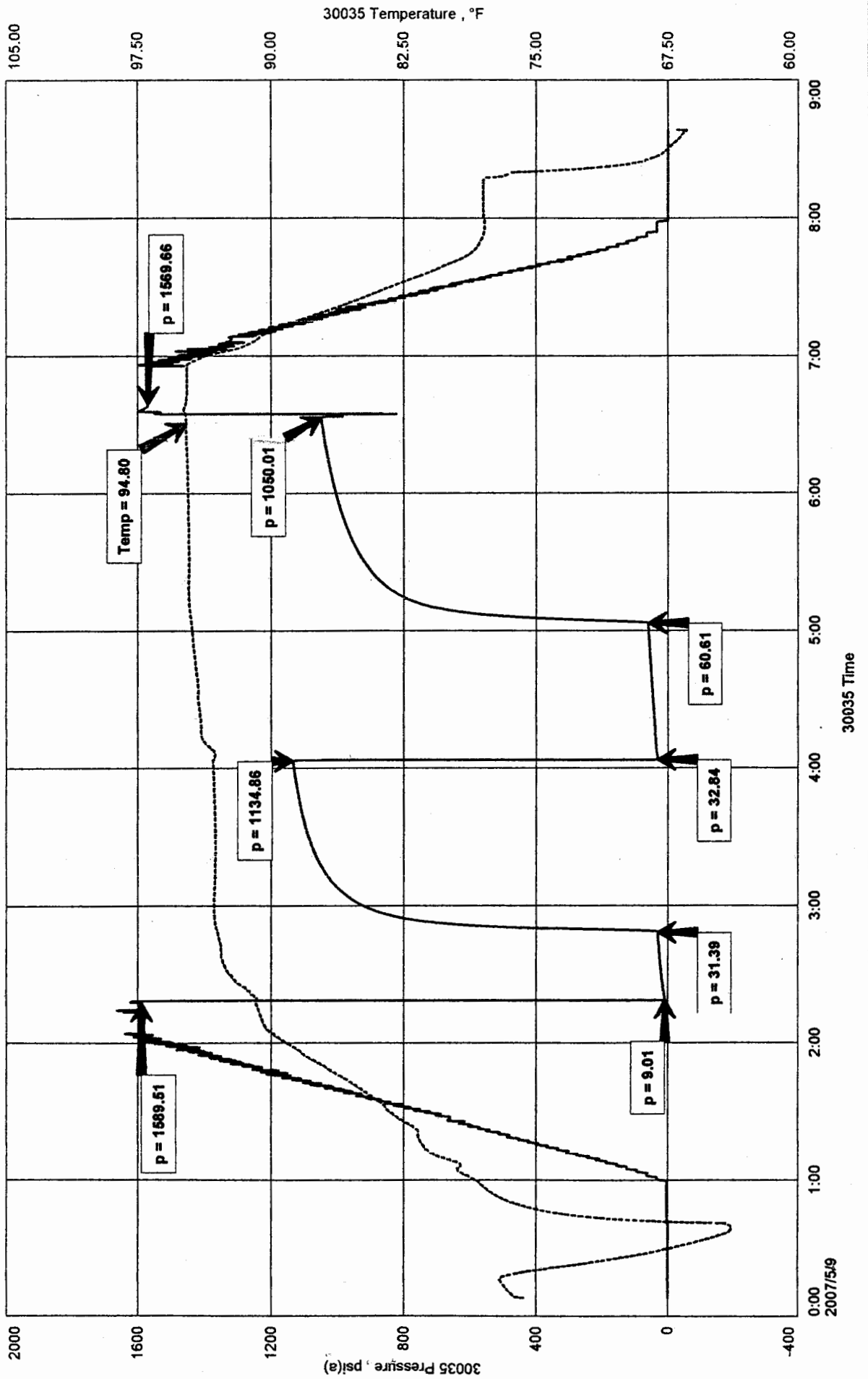
Remarks Tool Sample Grind Out: 26%-water; 74%-mud with a few oil specks

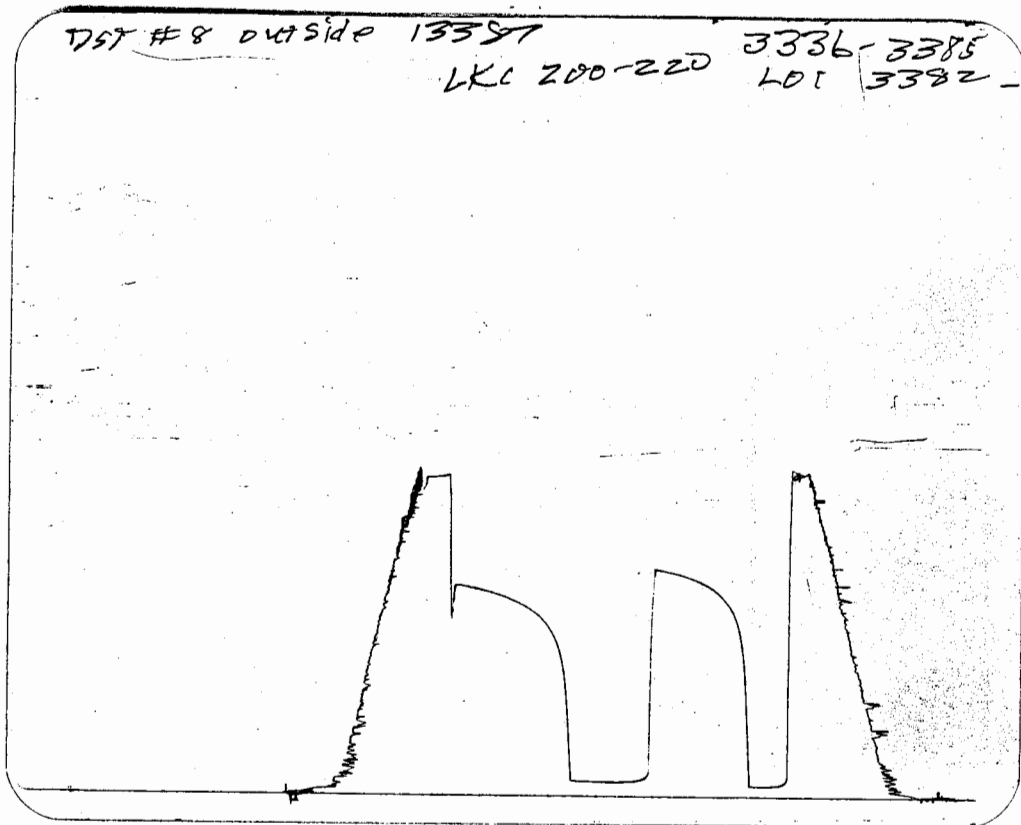
Time Set Packer(s) 2:19 A.M. Time Started Off Bottom 6:34 A.M. Maximum Temperature 95°
Initial Hydrostatic Pressure (A) 1590 P.S.I.
Initial Flow Period Minutes 30 (B) 9 P.S.I. to (C) 31 P.S.I.
Initial Closed In Period Minutes 75 (D) 1135 P.S.I.
Final Flow Period Minutes 60 (E) 33 P.S.I. to (F) 61 P.S.I.
Final Closed In Period Minutes 90 (G) 1050 P.S.I.
Final Hydrostatic Pressure (H) 1570 P.S.I.

TRANS PACIFIC OIL CORPORATION
DST #8 LKC 200' - 220' 3,336' - 3,385'
Start Test Date: 2007/05/09
Final Test Date: 2007/05/09

HANSEN FOUNDATION 'B' #1-12
Formation: DST #8 LKC 200' - 220' 3,336' - 3,385'
Pool: WILDCAT

HANSEN FOUNDATION 'B' #1-12





This is an actual photograph of recorder chart.

POINT	PRESSURE		Elec. Office Reading	PSI
	Field Reading			
(A) Initial Hydrostatic Mud	1590	1590		PSI
(B) First Initial Flow Pressure	9	9		PSI
(C) First Final Flow Pressure	31	31		PSI
(D) Initial Closed-in Pressure	1135	1135		PSI
(E) Second Initial Flow Pressure	33	33		PSI
(F) Second Final Flow Pressure	61	61		PSI
(G) Final Closed-in Pressure	1050	1050		PSI
(H) Final Hydrostatic Mud	1570	1570		PSI