

CHENEY TESTING COMPANY, INC.

P. O. Box 367

HILL CITY, KANSAS 67642

CONFIDENTIAL

DRILL-STEM TEST DATA

ORIGINAL

Company	A. Scott Ritchie	Test No.	1
Well Name & Number	Nola Frazey #2	Zone Tested	Topeka
Company Address	125 N. Market Ste. 950 Wichita, Ks.	Date	2/5/85
Company Rep.	Leah Ann Kasten	Tester	DEll Hartwell
Contractor	Murfin Drilling Company	Elevation	2209 KB
Location: Sec.	7 Twp. 6s Rge. 21w Co. Graham	State	Ks.
			Est. Feet of Pay

Recorder No. 10983 Type AK-1 Range 4100 PSI
 Recorder Depth 3397 Clock # 25829
 (A) Initial Hydrostatic Mud 1670 PSI
 (B) First Initial Flow Pressure 102 PSI
 (C) First Final Flow Pressure 183 PSI
 (D) Initial Shut-in Pressure 1218 PSI
 (E) Second Initial Flow Pressure 255 PSI
 (F) Second Final Flow Pressure 357 PSI
 (G) Final Shut-in Pressure 1197 PSI
 (H) Final Hydrostatic Mud 1639 PSI
 Temperature 104
 Mud Weight 9.4 Viscosity 42
 Fluid Loss 12.8
 Interval Tested 3367-3404
 Anchor Length 37
 Top Packer Depth -
 Bottom Packer Depth 3367
 Total Depth 3404
 Drill Pipe Size 4½ xH
 Wt. Pipe I. D. _____ Ft. Run _____
 Recovery-Total Feet 840
 Recovered 180 Feet Of Gas in pipe.
 Recovered 720 Feet Of Clean gassy oil. Trace of water. Gravity @ 32 API Corrected.
 Recovered 120 Feet Of Heavy oil spotted muddy water.
 Recovered _____ Feet Of _____
 Recovered _____ Feet Of _____
 Recovered _____ Feet Of _____
 Extra Equipment _____ Circulating Sub. _____ Price of Job \$655.00

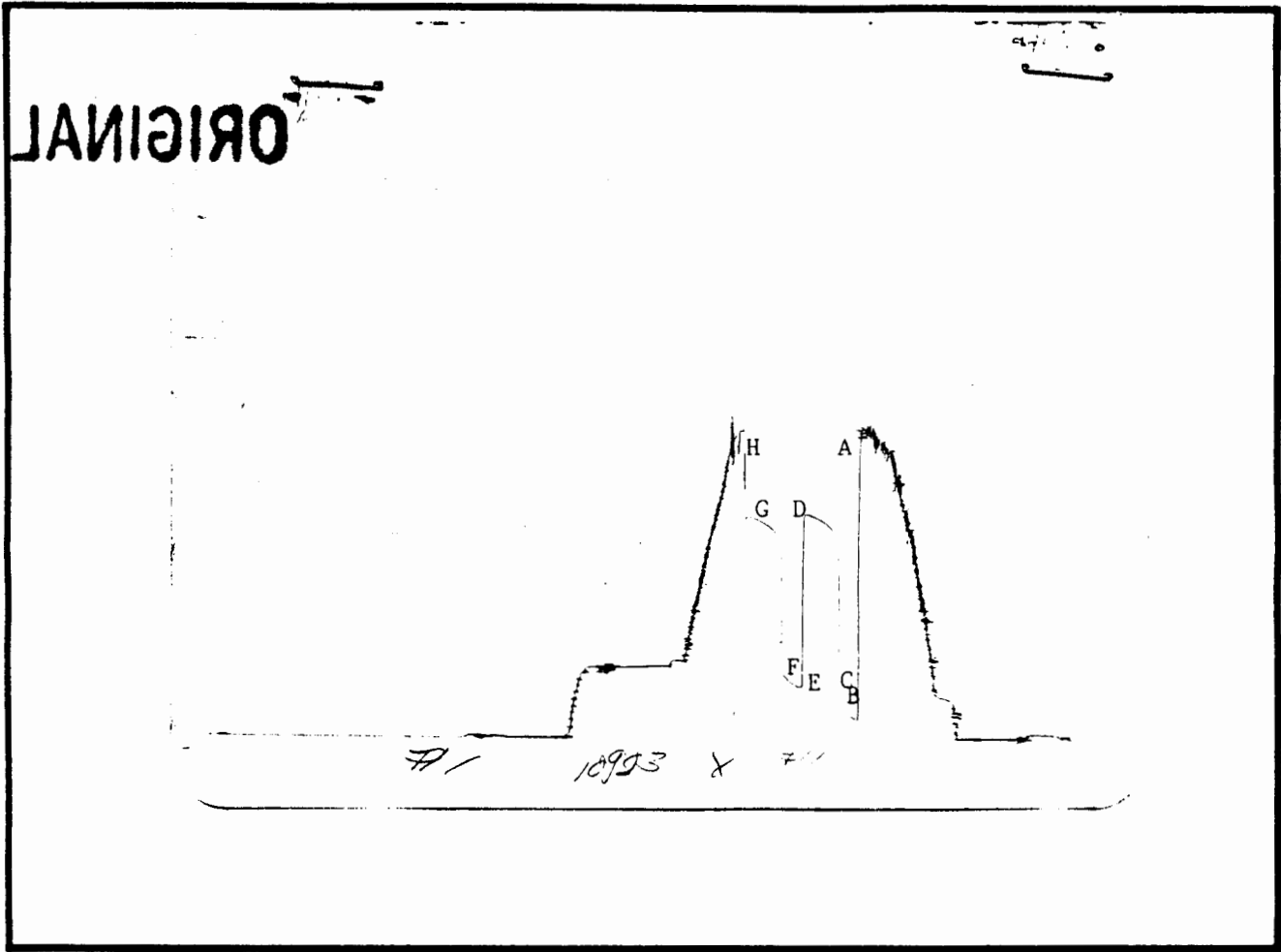
Recorder No. 13277 Type AK-1 Range 4125 PSI
 Recorder Depth 3399 Clock # 30410
 Tool Open Before I.S.I. 15 Mins.
 Initial Shut-in 30 Mins.
 Flow Period 15 Mins.
 Final Shut-in 30 Mins.
 Top Choke Size 1" Hole Size 7 7/8"
 Bottom Choke Size 3/4" Rubber Size 6 3/4"
 Tool Open @ 1:25 AM
 Blow Remarks 1st open: Very strong blow, off bottom of bucket in 3 minutes.
2nd open: Very strong blow, off bottom of bucket in 3 minutes.
Dropped bar, reversed out oil.

RECEIVED

JUN 23 2004

KCC WICHITA

Drill Collars I.D. 2.25 Ft. run 120.



This is an actual photograph of recorder chart.

POINT	PRESSURE		
	Field Reading	Office Reading	
(A) Initial Hydrostatic Mud	1670	1665	PSI
(B) First Initial Flow Pressure	102	104.6	PSI
(C) First Final Flow Pressure	183	193.9	PSI
(D) Initial Closed-in Pressure	1218	1222.7	PSI
(E) Second Initial Flow Pressure	255	281.0	PSI
(F) Second Final Flow Pressure	357	348.7	PSI
(G) Final Closed-in Pressure	1197	1205.2	PSI
(H) Final Hydrostatic Mud	1639	1634	PSI

CHENEY TESTING COMPANY, INC.

P. O. Box 367

HILL CITY, KANSAS 67642

CONFIDENTIAL

DRILL-STEM TEST DATA

ORIGINAL

Company <u>A. Scott Ritchie</u>	Test No. <u>2</u>
Well Name & Number <u>Nola Frazey #2</u>	Zone Tested <u>Toronto</u>
Company Address <u>125 N. Market Ste. 950 Wichita, Ks.</u>	Date <u>2/5/85</u>
Company Rep. <u>Leah Ann Kasten</u>	Tester <u>Dell Hartwell</u>
Contractor <u>Murfin Drilling Company</u>	Elevation <u>2209 KB</u>
Location: Sec. <u>7</u> Twp. <u>6s</u> Rge. <u>21w</u> Co. <u>Graham State</u> Ks.	Est. Feet of Pay _____

Recorder No. 10983 Type AK-1 Range 4100 PSI
 Recorder Depth 3460 Clock # 25829
 (A) Initial Hydrostatic Mud 1742 PSI
 (B) First Initial Flow Pressure 81 PSI
 (C) First Final Flow Pressure 265 PSI
 (D) Initial Shut-in Pressure 1300 PSI
 (E) Second Initial Flow Pressure 357 PSI
 (F) Second Final Flow Pressure 387 PSI
 (G) Final Shut-in Pressure 1269 PSI
 (H) Final Hydrostatic Mud 1722 PSI
 Temperature 104
 Mud Weight 9.2 Viscosity 39
 Fluid Loss 7.2
 Interval Tested 3406-3468
 Anchor Length 62
 Top Packer Depth -
 Bottom Packer Depth 3406
 Total Depth 3468
 Drill Pipe Size 4 1/2 XH
 Wt. Pipe I. D. _____ Ft. Run _____
 Recovery-Total Feet 1200
 Recovered 240 Feet Of Gas in pipe.
 Recovered 1200 Feet Of Mud cut oil.
 Recovered _____ Feet Of Top: 95% oil & 5% mud.
 Recovered _____ Feet Of Middle: 80% oil & 20% mud.
 Recovered _____ Feet Of Bottom 75% oil & 25% mud.
 Recovered _____ Feet Of _____
 Extra Equipment Circulating Sub. Price of Job \$655.00

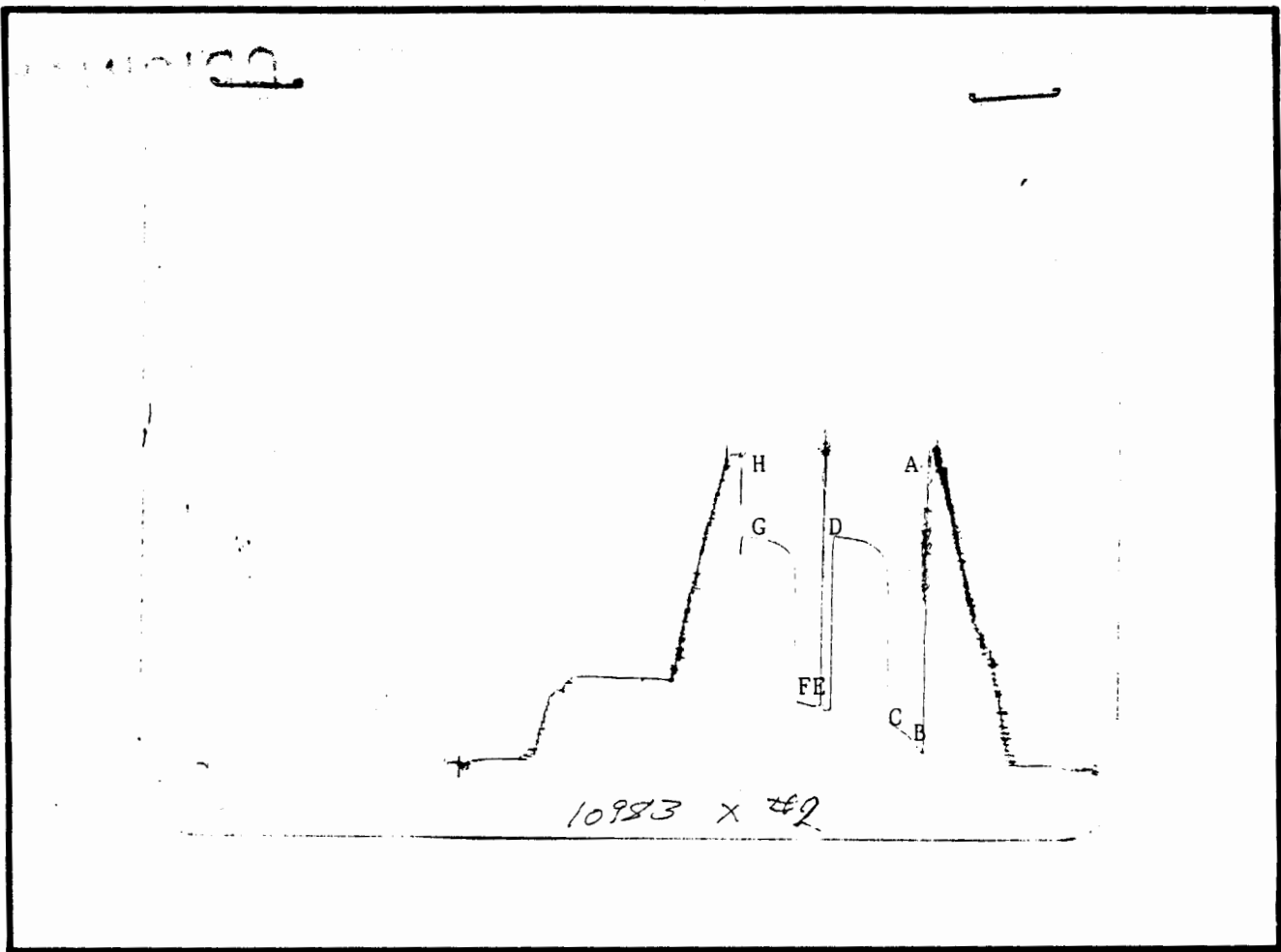
Recorder No. 13277 Type AK-1 Range 4125 PSI
 Recorder Depth 3463 Clock # 30410
 Tool Open Before I.S.I. 30 Mins.
 Initial Shut-in 45 Mins.
 Flow Period 30 Mins.
 Final Shut-in 45 Mins.
 Top Choke Size 1" Hole Size 7 7/8"
 Bottom Choke Size 3/4" Rubber Size 6 3/4"
 Tool Open @ 8:15 PM
 Blow Remarks 1st open: Weak 1/2 inch steady blow.
2nd open: NO blow, flushed tool, weak surge, no blow.
Ice froze in Head Joint.
Tool slid 5 feet to bottom.
Dropped bar.
Reversed out fluid.

Drill Collars I.D. 2.25 Ft. run 120.

RECEIVED

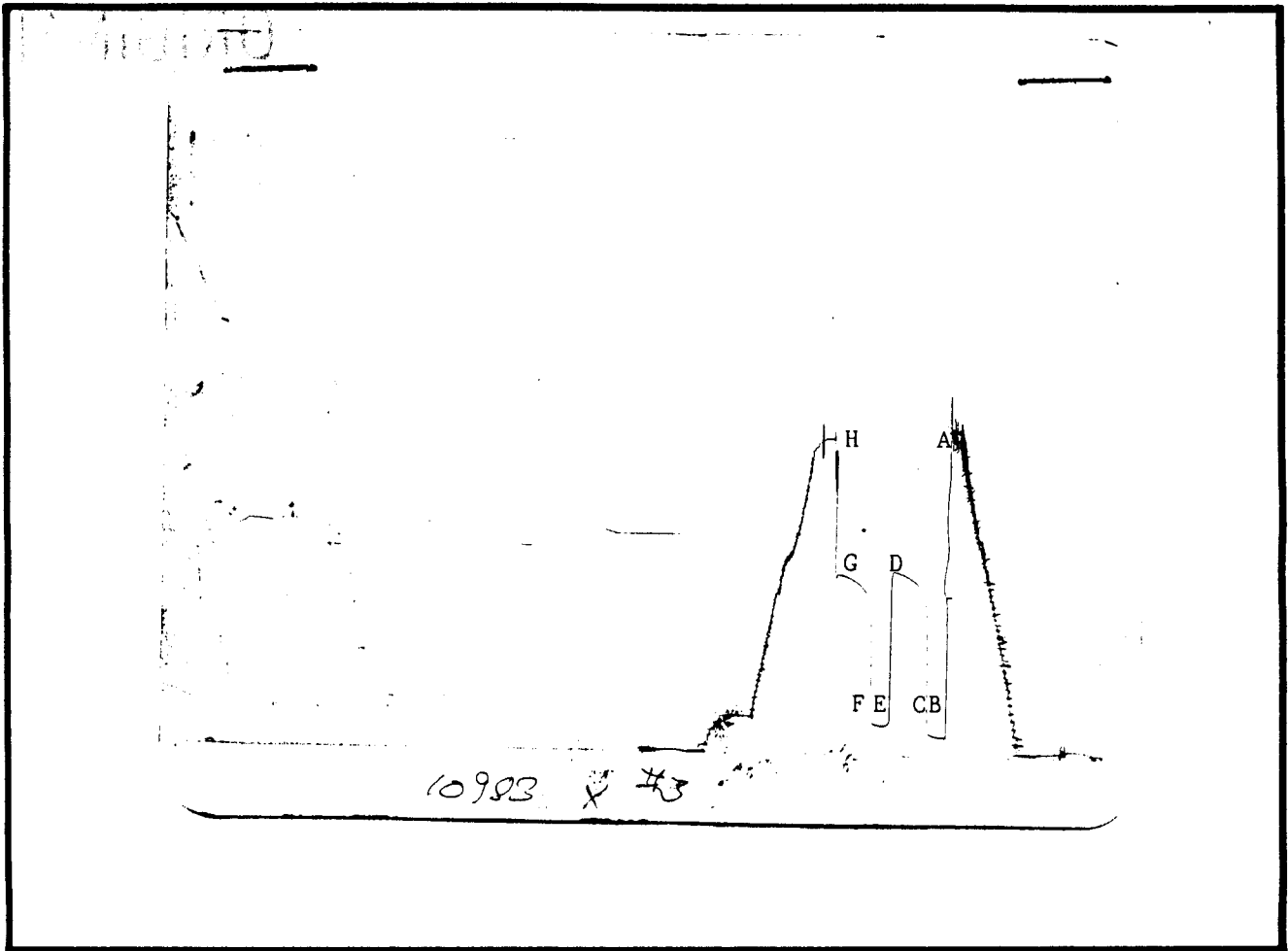
JUN 23 2004

KCC WICHITA



This is an actual photograph of recorder chart.

POINT	PRESSURE		
	Field Reading	Office Reading	
(A) Initial Hydrostatic Mud	1742	1737	PSI
(B) First Initial Flow Pressure	81	109.8	PSI
(C) First Final Flow Pressure	265	275.9	PSI
(D) Initial Closed-in Pressure	1300	1278.0	PSI
(E) Second Initial Flow Pressure	357	354.9	PSI
(F) Second Final Flow Pressure	387	377.5	PSI
(G) Final Closed-in Pressure	1269	1270.9	PSI
(H) Final Hydrostatic Mud	1722	1717	PSI



This is an actual photograph of recorder chart.

POINT	PRESSURE		
	Field Reading	Office Reading	
(A) Initial Hydrostatic Mud	1794	1789	PSI
(B) First Initial Flow Pressure	91	99.5	PSI
(C) First Final Flow Pressure	112	115.9	PSI
(D) Initial Closed-in Pressure	991	997.0	PSI
(E) Second Initial Flow Pressure	153	156.9	PSI
(F) Second Final Flow Pressure	163	168.2	PSI
(G) Final Closed-in Pressure	981	977.5	PSI
(H) Final Hydrostatic Mud	1711	1706	PSI

CHENEY TESTING COMPANY, INC.

P. O. Box 367

HILL CITY, KANSAS 67642

CONFIDENTIAL

ORIGINAL

DRILL-STEM TEST DATA

Company <u>A. Scott Ritchie</u>	Test No. <u>4</u>
Well Name & Number <u>Nola Frazey #2</u>	Zone Tested <u>Lansing 50' Zone</u>
Company Address <u>125 N. Market Ste. 950 Wichita, Ks.</u>	Date <u>2/7/85</u>
Company Rep. <u>Leah Ann Kasten / Bob Buffo</u>	Tester <u>Dell Hartwell</u>
Contractor <u>Murfin Drilling Company</u>	Elevation <u>2209 KB</u>
Location: Sec. <u>7</u> Twp. <u>6s</u> Rge. <u>21w</u> Co. <u>Graham</u> State <u>Ks.</u>	Est. Feet of Pay _____

Recorder No. 10983 Type AK-1 Range 4100 PSI
 Recorder Depth 3507 Clock # 25829
 (A) Initial Hydrostatic Mud 1753 PSI
 (B) First Initial Flow Pressure 61 PSI
 (C) First Final Flow Pressure 112 PSI
 (D) Initial Shut-in Pressure 663 PSI
 (E) Second Initial Flow Pressure 142 PSI
 (F) Second Final Flow Pressure 153 PSI
 (G) Final Shut-in Pressure 674 PSI
 (H) Final Hydrostatic Mud 1732 PSI
 Temperature 105
 Mud Weight 9.3 Viscosity 41
 Fluid Loss 6.4
 Interval Tested 3498-3515
 Anchor Length 17
 Top Packer Depth -
 Bottom Packer Depth 3498
 Total Depth 3515
 Drill Pipe Size 4½ XH

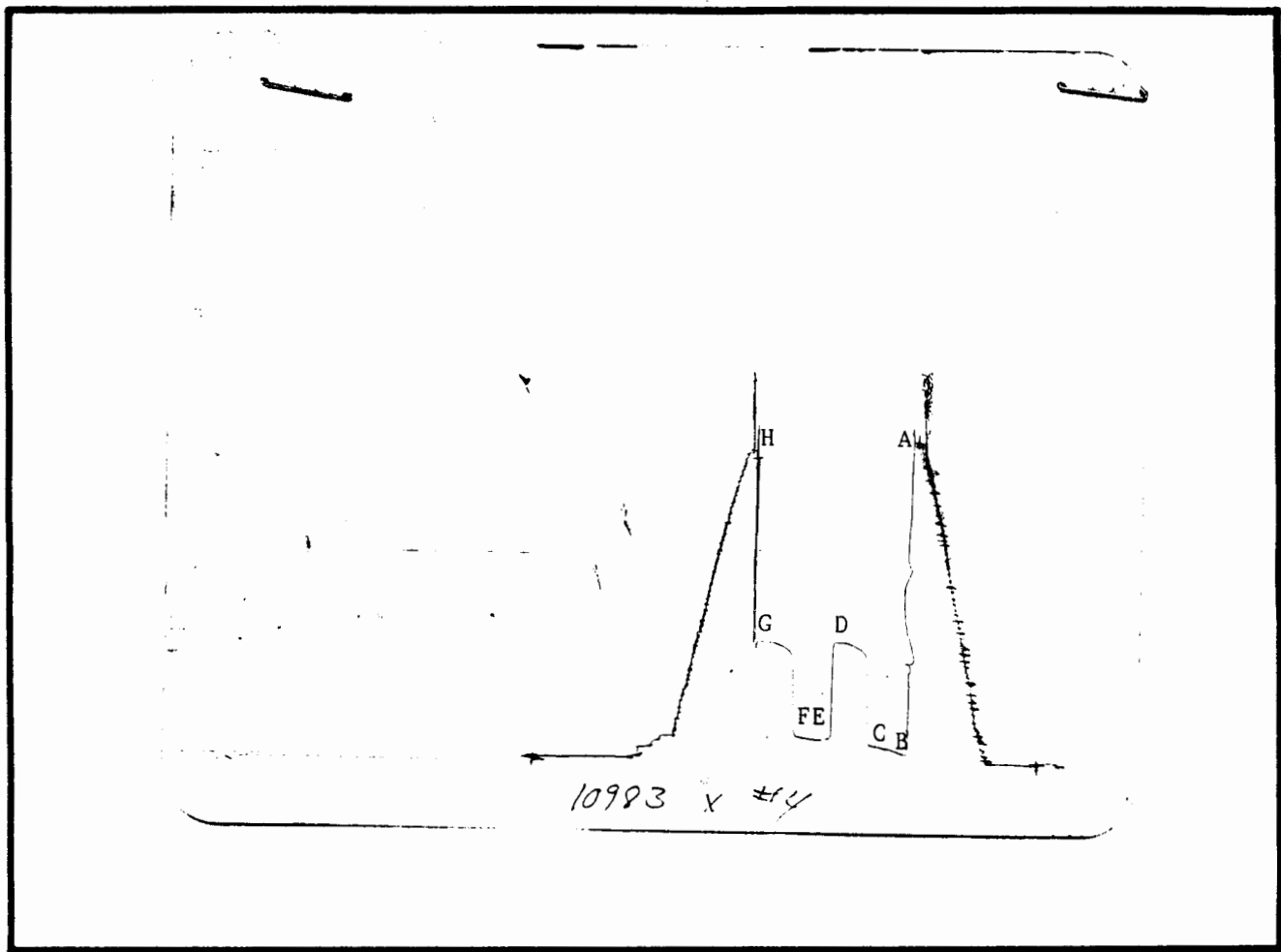
Recorder No. 13277 Type AK-1 Range 4125 PSI
 Recorder Depth 3510 Clock # 30410
 Tool Open Before I.S.I. 30 Mins.
 Initial Shut-in 30 Mins.
 Flow Period 30 Mins.
 Final Shut-in 30 Mins.
 Top Choke Size 1" Hole Size 7 7/8"
 Bottom Choke Size 3/4" Rubber Size 6 3/4"
 Tool Open @ 12:45 AM
 Blow Remarks 1st open: Strong blow, off bottom of bucket in 15 minutes.
2nd open: Strong blow, off bottom of bucket in 18 minutes.
 Pit-mud Chlorides: 4,000 ppm.
 Recovery Chlorides; 21,000 ppm.
 Resistivity .35 ohms @ 65.4 °F.
 Drill Collars I.D. 2.25 Ft. run 120.

Wt. Pipe I. D. _____ Ft. Run _____
 Recovery-Total Feet 290
 Recovered 240 Feet Of Gas in pipe.
 Recovered 50 Feet Of Clean oil: Gravity @ 33 API Corrected.
 Recovered 60 Feet Of Oil & water cut mud: 30% oil, 30% water & 40% mud.
 Recovered 180 Feet Of Muddy water; 95% water & 5% mud.
 Recovered _____ Feet Of _____
 Recovered _____ Feet Of _____

RECEIVED
JUN 23 2004

Extra Equipment _____ Price of Job \$625.00

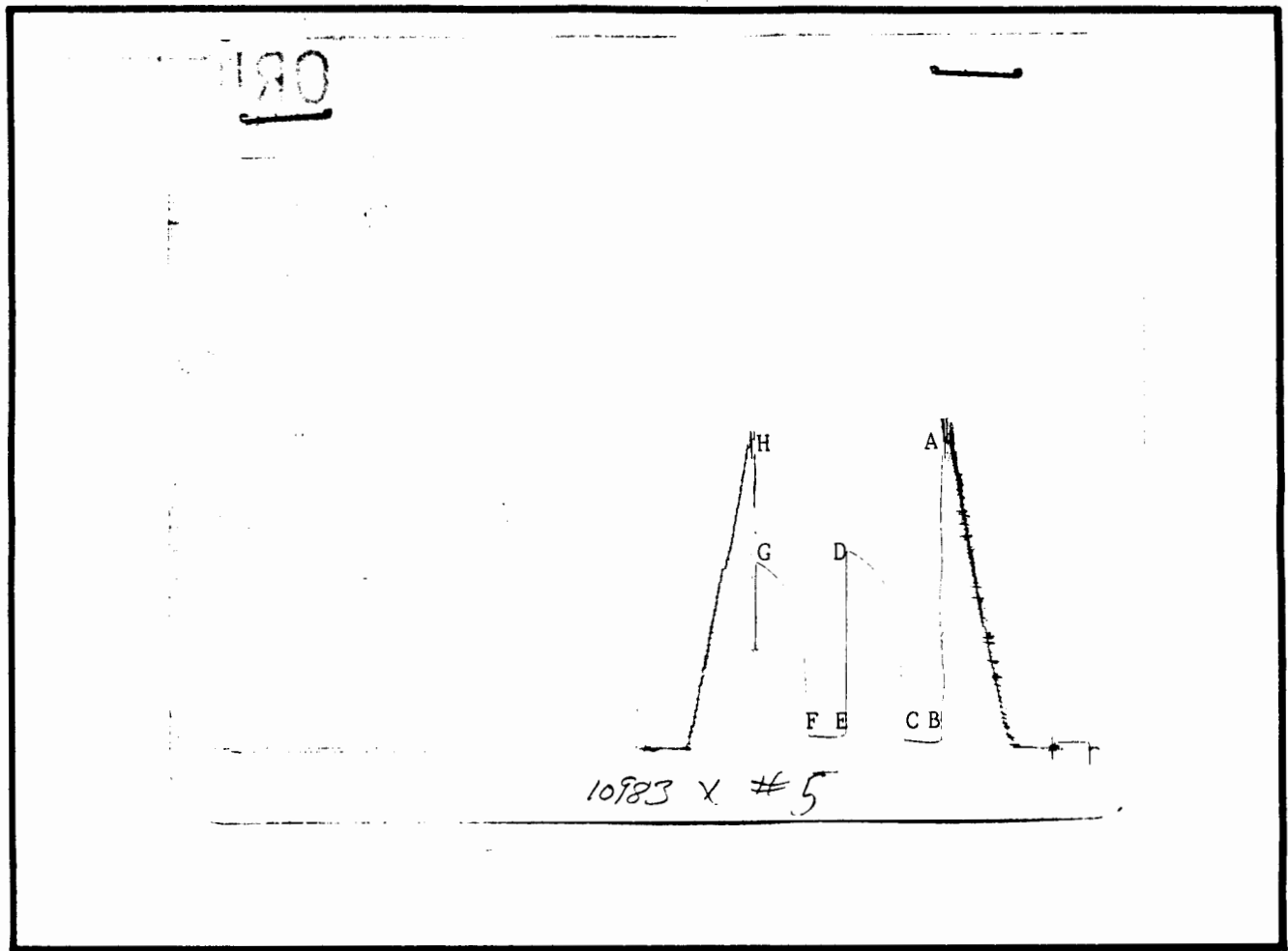
KCC WICHITA



This is an actual photograph of recorder chart.

POINT	PRESSURE		
	Field Reading	Office Reading	
(A) Initial Hydrostatic Mud	1753	1768	PSI
(B) First Initial Flow Pressure	61	69.7	PSI
(C) First Final Flow Pressure	112	119.0	PSI
(D) Initial Closed-in Pressure	663	680.1	PSI
(E) Second Initial Flow Pressure	142	144.6	PSI
(F) Second Final Flow Pressure	153	163.1	PSI
(G) Final Closed-in Pressure	674	678.0	PSI
(H) Final Hydrostatic Mud	1732	1727	PSI

190



This is an actual photograph of recorder chart.

POINT	PRESSURE		
	Field Reading	Office Reading	
(A) Initial Hydrostatic Mud	1794	1789	PSI
(B) First Initial Flow Pressure	40	47.2	PSI
(C) First Final Flow Pressure	51	61.5	PSI
(D) Initial Closed-in Pressure	1115	1110.9	PSI
(E) Second Initial Flow Pressure	71	76.9	PSI
(F) Second Final Flow Pressure	91	84.1	PSI
(G) Final Closed-in Pressure	1022	1046.2	PSI
(H) Final Hydrostatic Mud	1701	1696	PSI

CHENEY TESTING COMPANY, INC.

P. O. Box 367

HILL CITY, KANSAS 67642

ORIGINAL

CONFIDENTIAL

DRILL-STEM TEST DATA

Company	A. Scott Ritchie	Test No.	6
Well Name & Number	Nola Frazey #2	Zone Tested	Lansing 90' & 100'
Company Address	125 N. Market, Ste. 950 Wichita, Ks.	Date	2/8/85
Company Rep.	Leah Ann Kasten / Bob Buffo	Tester	Dell Hartwell
Contractor	Murfin Drilling Company	Elevation	2209 KB
Location: Sec. 7 Twp. 6s Rge. 21w Co. Graham State Ks.	Est. Feet of Pay		

Recorder No. 10983 Type AK-1 Range 4100 PSI
 Recorder Depth 3536 Clock # 25829
 (A) Initial Hydrostatic Mud 1742 PSI
 (B) First Initial Flow Pressure 30 PSI
 (C) First Final Flow Pressure 40 PSI
 (D) Initial Shut-in Pressure 1104 PSI
 (E) Second Initial Flow Pressure 40 PSI
 (F) Second Final Flow Pressure 40 PSI
 (G) Final Shut-in Pressure 1074 PSI
 (H) Final Hydrostatic Mud 1691 PSI
 Temperature 105
 Mud Weight 9.4 Viscosity 42
 Fluid Loss 7.2
 Interval Tested 3529-3544
 Anchor Length 15
 Top Packer Depth -
 Bottom Packer Depth 3529
 Total Depth 3544
 Drill Pipe Size 4 1/2 XH

Recorder No. 13277 Type AK-1 Range 4125 PSI
 Recorder Depth 3539 Clock # 30410
 Tool Open Before I.S.I. 30 Mins.
 Initial Shut-in 45 Mins.
 Flow Period 30 Mins.
 Final Shut-in 45 Mins.
 Top Choke Size 1" Hole Size 7 7/8"
 Bottom Choke Size 3/4" Rubber Size 6 3/4"
 Tool Open @ 4:55 AM
 Blow Remarks 1st open: Weak 2 inch blow.
2nd open; Weak, steady 1 inch blow.

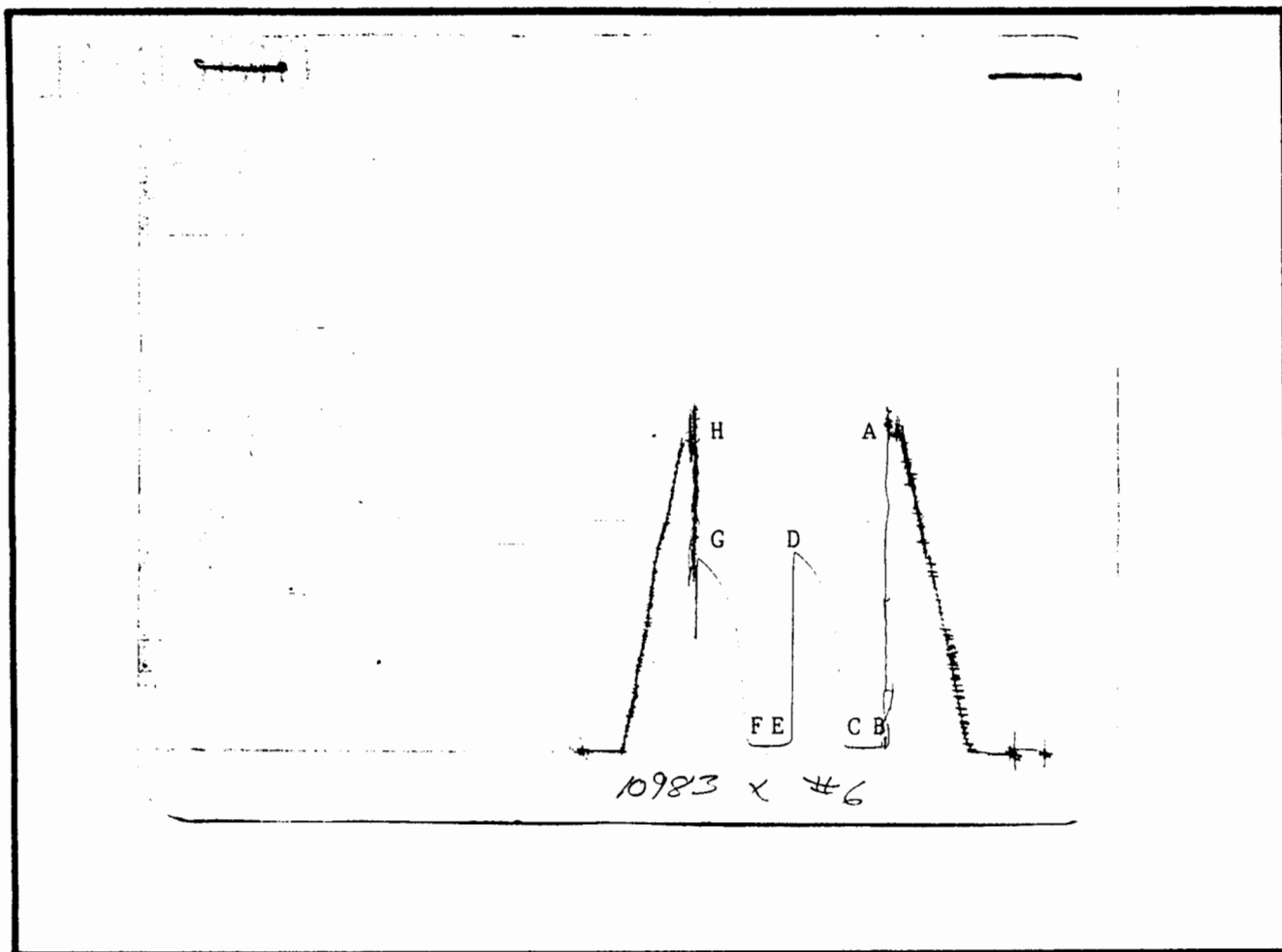
Wt. Pipe I. D. _____ Ft. Run _____
 Recovery-Total Feet 20
 Recovered 20 Feet Of Mud.
 Recovered _____ Feet Of _____
 Recovered _____ Feet Of _____
 Recovered _____ Feet Of _____
 Recovered _____ Feet Of _____
 Recovered _____ Feet Of _____

Drill Collars i.D. 2.25 Ft. run 120.

RECEIVED

JUN 23 2004

Extra Equipment _____ **KCC WICHITA** Price of Job \$625.00



This is an actual photograph of recorder chart.

POINT	PRESSURE	
	Field Reading	Office Reading
(A) Initial Hydrostatic Mud	1742	PSI
(B) First Initial Flow Pressure	30	PSI
(C) First Final Flow Pressure	40	PSI
(D) Initial Closed-in Pressure	1104	PSI
(E) Second Initial Flow Pressure	40	PSI
(F) Second Final Flow Pressure	40	PSI
(G) Final Closed-in Pressure	1074	PSI
(H) Final Hydrostatic Mud	1691	PSI

CHENEY TESTING COMPANY, INC.

P. O. Box 367

HILL CITY, KANSAS 67642

CONFIDENTIAL

DRILL-STEM TEST DATA

ORIGINAL

Company <u>A. Scott Ritchie</u>	Test No. <u>7</u>
Well Name & Number <u>Nola Frazey #2</u>	Zone Tested <u>Lansing 140'-180'</u>
Company Address <u>125 N. Markte Ste. 950 Wichita , Ks.</u>	Date <u>2/8/85</u>
Company Rep. <u>Leah Ann Kasten / Bob Buffo</u>	Tester <u>Dell Hartwell</u>
Contractor <u>Murfin Drilling Company</u>	Elevation <u>2209 KB</u>
Location: Sec. <u>7</u> Twp. <u>6s</u> Rge. <u>21w</u> Co. <u>Graham</u> State <u>KS.</u>	Est. Feet of Pay _____

Recorder No. 10983 Type AK-1 Range 4100 PSI

Recorder No. 13277 Type AK-1 Range 4125 PSI

Recorder Depth 3614 Clock # 25829

Recorder Depth 3617 Clock # 30410

(A) Initial Hydrostatic Mud 1886 PSI

Tool Open Before I.S.I. 30 Mins.

(B) First Initial Flow Pressure 71 PSI

Initial Shut-in 45 Mins.

(C) First Final Flow Pressure 81 PSI

Flow Period 30 Mins.

(D) Initial Shut-in Pressure 1228 PSI

Final Shut-in 45 Mins.

(E) Second Initial Flow Pressure 91 PSI

Top Choke Size 1" Hole Size 7 7/8"

(F) Second Final Flow Pressure 102 PSI

Bottom Choke Size 3/4" Rubber Size 6 3/4"

(G) Final Shut-in Pressure 1197 PSI

Tool Open @ 8:55 PM

(H) Final Hydrostatic Mud 1835 PSI

Blow Remarks 1st open; Weak 3 inch blow.

Temperature 106

2nd open: Weak 2 inch blow.

Mud Weight 9.6 Viscosity 45

Fluid Loss 7.2

Interval Tested 3560-3622

Anchor Length 62

Top Packer Depth -

Bottom Packer Depth 3560

Total Depth 3622

Drill Pipe Size 4 1/2 xH

Wt. Pipe I. D. _____ Ft. Run _____

Drill Collars I.D. 2.25 Ft. run 120.

Recovery-Total Feet 90

Recovered 90 Feet Of Mud.

Recovered _____ Feet Of Slight oil spotted.

Recovered _____ Feet Of _____

Recovered _____ Feet Of _____

Recovered _____ Feet Of _____

Recovered _____ Feet Of _____

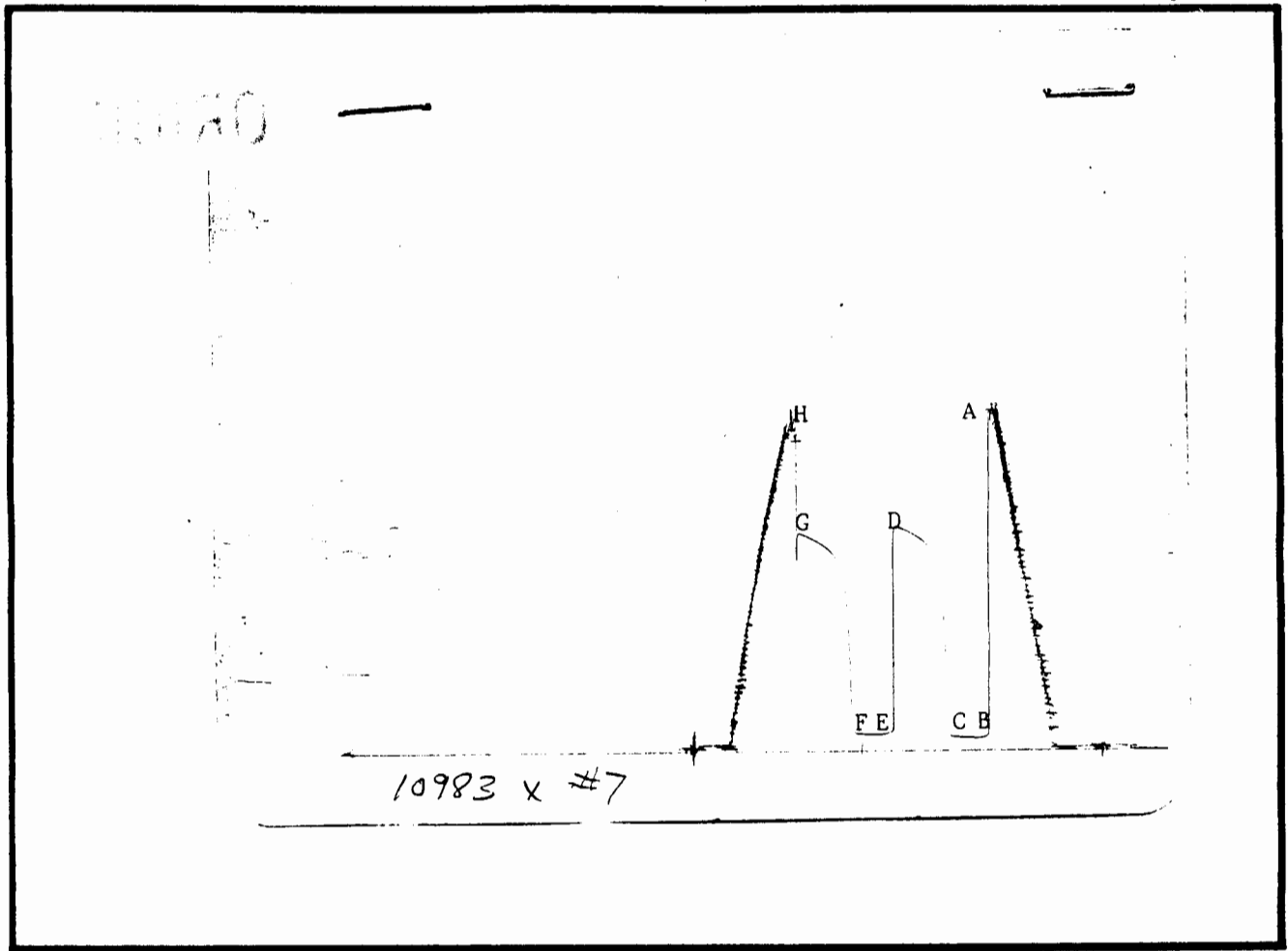
Extra Equipment _____

RECEIVED

JUN 23 2004

Price of Job \$625.00

KCC WICHITA



This is an actual photograph of recorder chart.

POINT	PRESSURE		
	Field Reading	Office Reading	
(A) Initial Hydrostatic Mud	1886	1881	PSI
(B) First Initial Flow Pressure	71	66.7	PSI
(C) First Final Flow Pressure	81	76.9	PSI
(D) Initial Closed-in Pressure	1228	1229.8	PSI
(E) Second Initial Flow Pressure	91	88.2	PSI
(F) Second Final Flow Pressure	102	93.3	PSI
(G) Final Closed-in Pressure	1197	1193.9	PSI
(H) Final Hydrostatic Mud	1835	1830	PSI

CHENEY TESTING COMPANY, INC. ORIGINAL

P. O. Box 367 HILL CITY, KANSAS 67642

CONFIDENTIAL

DRILL-STEM TEST DATA

Company <u>A. Scott Ritchie</u>	Test No. <u>8</u>
Well Name & Number <u>Nola Frazey #2</u>	Zone Tested <u>Conglomerate</u>
Company Address <u>125 N. Market Ste. 950 Wichita, Ks.</u>	Date <u>2/9/85</u>
Company Rep. <u>Leah Ann Kasten / Bob Buffo</u>	Tester <u>Dell Hartwell</u>
Contractor <u>Murfin Drilling Company</u>	Elevation <u>2209 KB</u>
Location: Sec. <u>7</u> Twp. <u>6s</u> Rge. <u>21w</u> Co. <u>Graham</u> State <u>KS.</u>	Est. Feet of Pay _____

Recorder No. 10983 Type AK-1 Range 4100 PSI
 Recorder Depth 3698 Clock # 25829
 (A) Initial Hydrostatic Mud 1870 PSI
 (B) First Initial Flow Pressure 51 PSI
 (C) First Final Flow Pressure 51 PSI
 (D) Initial Shut-in Pressure 866 PSI
 (E) Second Initial Flow Pressure 51 PSI
 (F) Second Final Flow Pressure 51 PSI
 (G) Final Shut-in Pressure 733 PSI
 (H) Final Hydrostatic Mud 1840 PSI
 Temperature 106
 Mud Weight 9.4 Viscosity 46
 Fluid Loss 7.2
 Interval Tested 3678-3706
 Anchor Length 28
 Top Packer Depth -
 Bottom Packer Depth 3678
 Total Depth 3706
 Drill Pipe Size 4½ xH
 Wt. Pipe I. D. _____ Ft. Run _____
 Recovery-Total Feet 70

Recorder No. 13277 Type AK-1 Range 4125 PSI
 Recorder Depth 3701 Clock # 30410
 Tool Open Before I.S.I. 30 Mins.
 Initial Shut-in 30 Mins.
 Flow Period 30 Mins.
 Final Shut-in 30 Mins.
 Top Choke Size 1" Hole Size 7 7/8"
 Bottom Choke Size 3/4" Rubber Size 6 3/4"
 Tool Open @ 1:50 PM
 Blow Remarks 1st open; Weak 2 inch blow.
2nd open; Very weak 1½ inch steady blow.

Drill Collars I.D. 2.25 Ft. run 120 .

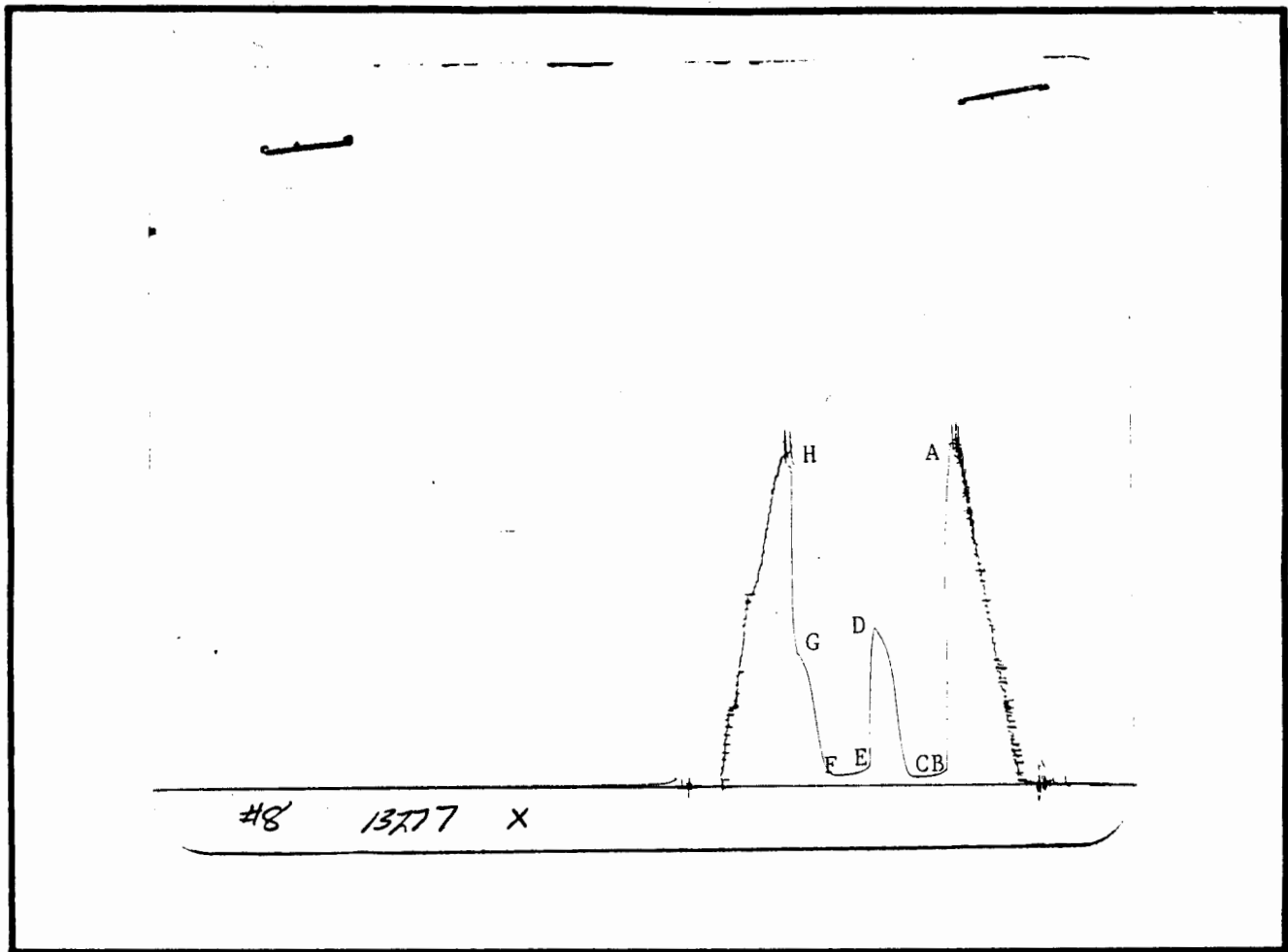
Recovered 10 Feet Of Mud cut oil: 95% oil & 5% mud.
 Recovered 60 Feet Of watery mud cut oil: 10% water, 40% mud, & 50% oil.
 Recovered _____ Feet Of _____
 Recovered _____ Feet Of _____
 Recovered _____ Feet Of _____

RECEIVED

JUN 23 2004

Extra Equipment _____ Price of Job \$625.00

KCC WICHITA



This is an actual photograph of recorder chart.

POINT	PRESSURE	
	Field Reading	Office Reading
(A) Initial Hydrostatic Mud	1870	PSI
(B) First Initial Flow Pressure	51	PSI
(C) First Final Flow Pressure	51	PSI
(D) Initial Closed-in Pressure	866	PSI
(E) Second Initial Flow Pressure	51	PSI
(F) Second Final Flow Pressure	51	PSI
(G) Final Closed-in Pressure	733	PSI
(H) Final Hydrostatic Mud	1840	PSI