

15-065-22023

## CHENEY TESTING COMPANY, INC.

P. O. Box 367

HILL CITY, KANSAS 67642

8-65-21w

## DRILL-STEM TEST DATA

Company	A. Scott Ritchie	Test No.	1
Well Name & Number	A. Carl Boys #1	Zone Tested	Lower Topeka
Company Address	125 N Market Suite 950 Wichita Ks.	Date	7/30/84
Company Rep.	Leah Ann Kasten	Tester	Dave Hunt
Contractor	Murfin Drilling Company	Elevation	2211 KB
Location: Sec. 8 Twp. 6 Rge. 21w Co. Graham State Ks.	Est. Feet of Pay		

Recorder No. 13275 Type AK-1 Range 3950 PSI

Recorder Depth 3407 Clock # 25829

(A) Initial Hydrostatic Mud 1842 PSI

(B) First Initial Flow Pressure 90 PSI

(C) First Final Flow Pressure 90 PSI

(D) Initial Shut-in Pressure 1215 PSI

(E) Second Initial Flow Pressure 90 PSI

(F) Second Final Flow Pressure 90 PSI

(G) Final Shut-in Pressure 1166 PSI

(H) Final Hydrostatic Mud 1812 PSI

Temperature 104

Mud Weight 9.6 Viscosity 40

Fluid Loss 9.6

Interval Tested 3349-3410

Anchor Length 61

Top Packer Depth 3344

Bottom Packer Depth 3349

Total Depth 3410

Drill Pipe Size 4 1/2 XH

Wt. Pipe I. D. Ft. Run

Recovery-Total Feet 65

Recovered 65 Feet Of slightly oil specked mud.

Recovered Feet Of

Recovered Feet Of

Recovered Feet Of

Recovered Feet Of

Recovered Feet Of

Extra Equipment Price of Job \$625.00

Recorder No. 13276 Type AK-1 Range 3950 PSI

Recorder Depth 3404 Clock # 22345

Tool Open Before I.S.I. 30 Mins.

Initial Shut-in 45 Mins.

Flow Period 30 Mins.

Final Shut-in 45 Mins.

Top Choke Size 1" Hole Size 7 7/8"

Bottom Choke Size 3/4" Rubber Size 6 3/4"

Tool Open @ 4:55 AM

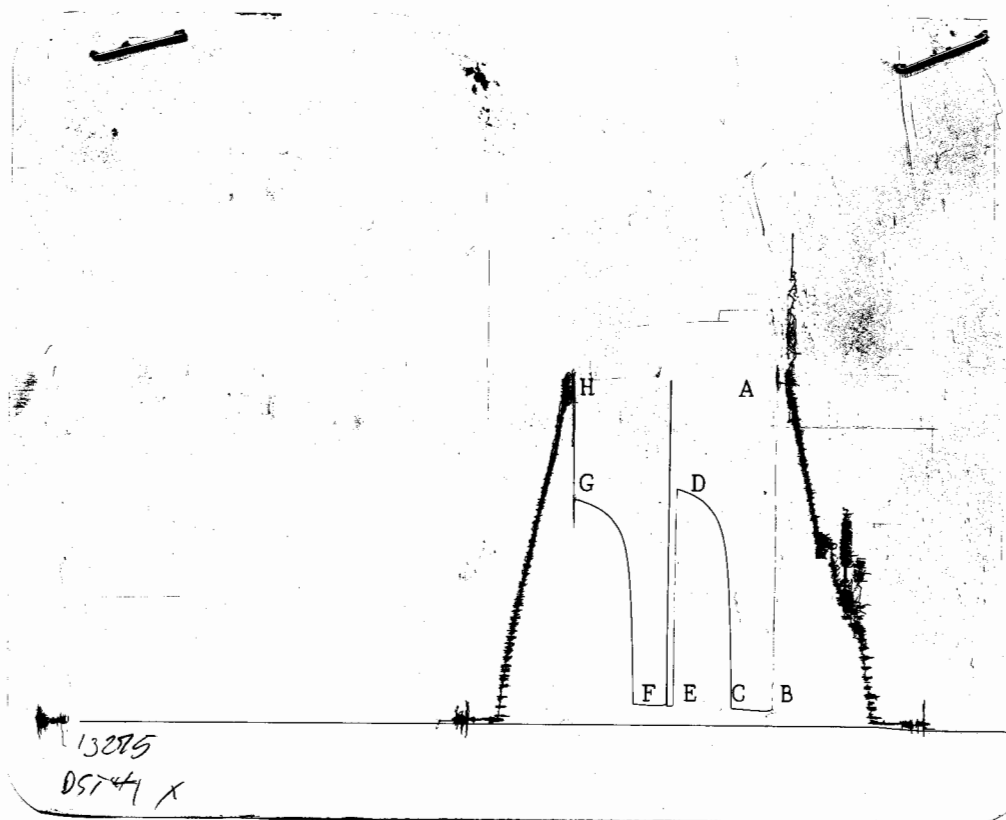
Blow Remarks 1st open: Decreasing blow, died within 11 minutes.

2nd open: No blow, flushed tool, good surge &amp; blow died in 5 minutes.

Well Chlorides: 3,000 ppm

Recovery Chlorides: 3,000 ppm

Drill Collars: 2.25 Ft. Run: 238



This is an actual photograph of recorder chart.

POINT	PRESSURE	
	Field Reading	Office Reading
(A) Initial Hydrostatic Mud .....	1842	PSI
(B) First Initial Flow Pressure .....	90	PSI
(C) First Final Flow Pressure .....	90	PSI
(D) Initial Closed-in Pressure .....	1215	PSI
(E) Second Initial Flow Pressure .....	90	PSI
(F) Second Final Flow Pressure .....	90	PSI
(G) Final Closed-in Pressure .....	1166	PSI
(H) Final Hydrostatic Mud .....	1812	PSI

# CHENEY TESTING COMPANY, INC.

P. O. Box 367

HILL CITY, KANSAS 67642

## DRILL-STEM TEST DATA

Company	A. Scott Ritchie	Test No.	2
Well Name & Number	A. Carl Boys #1	Zone Tested	Toronto & Top Lansing
Company Address	125 N Market Suite 950 Wichita Ks.	Date	7/30/84
Company Rep.	Leah Ann Kastan	Tester	Dave Hunt
Contractor	Murfin Drilling Company	Elevation	2211 KB
Location: Sec. 8 Twp. 6 Rge. 21w Co. Graham State Ks.		Est. Feet of Pay	

Recorder No. 13275 Type Ak-1 Range 3950 PSI

Recorder Depth 3473 Clock # 25829

(A) Initial Hydrostatic Mud 1930 PSI

(B) First Initial Flow Pressure 50 PSI

(C) First Final Flow Pressure 50 PSI

(D) Initial Shut-in Pressure 787 PSI

(E) Second Initial Flow Pressure 60 PSI

(F) Second Final Flow Pressure 60 PSI

(G) Final Shut-in Pressure 708 PSI

(H) Final Hydrostatic Mud 1930 PSI

Temperature 105

Mud Weight 9.7 Viscosity 42

Fluid Loss 10.2

Interval Tested 3422-3476

Anchor Length 54

Top Packer Depth 3417

Bottom Packer Depth 3422

Total Depth 3476

Drill Pipe Size 4 1/2 XH

Wt. Pipe I. D. Ft. Run

Recovery-Total Feet 20

Recovered 20 Feet Of oil specked mud.

Recovered Feet Of

Recovered Feet Of

Recovered Feet Of

Recovered Feet Of

Recovered Feet Of

Recovered Feet Of

Extra Equipment Price of Job \$625.00

Recorder No. 13276 Type Ak-1 Range 3950 PSI

Recorder Depth 3470 Clock # 22345

Tool Open Before I.S.I. 30 Mins.

Initial Shut-in 30 Mins.

Flow Period 30 Mins.

Final Shut-in 30 Mins.

Top Choke Size 1" Hole Size 7 7/8"

Bottom Choke Size 3/4" Rubber Size 6 3/4"

Tool Open @ 8:10 PM

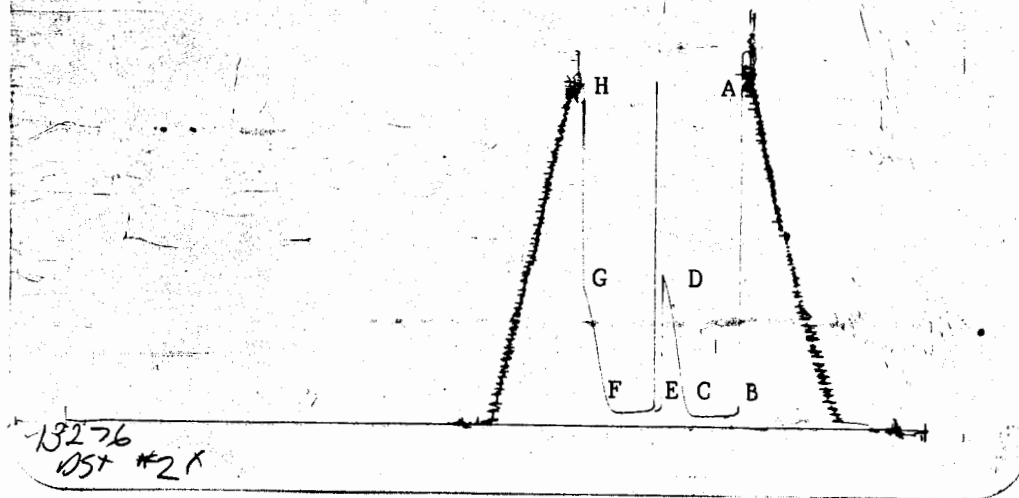
Blow Remarks 1st open: Weak blow, died in 5 minutes.

2nd open: No blow, flushed tool, good surge, blow died in 2 minutes.

Well Chlorides: 4,000 ppm

Recovery chlorides: 4,000 ppm

Drill Collars: 2.25 Ft. Run: 238



This is an actual photograph of recorder chart.

POINT	PRESSURE	
	Field Reading	Office Reading
(A) Initial Hydrostatic Mud .....	1930	PSI
(B) First Initial Flow Pressure .....	50	PSI
(C) First Final Flow Pressure .....	50	PSI
(D) Initial Closed-in Pressure .....	787	PSI
(E) Second Initial Flow Pressure .....	60	PSI
(F) Second Final Flow Pressure .....	60	PSI
(G) Final Closed-in Pressure .....	708	PSI
(H) Final Hydrostatic Mud .....	1930	PSI

# CHENEY TESTING COMPANY, INC.

P. O. Box 367

HILL CITY, KANSAS 67642

## DRILL-STEM TEST DATA

Company	A. Scott Ritchie	Test No.	3
Well Name & Number	A. Carl Boys #1	Zone Tested	Lansing
Company Address	125 N Market Suite 950 Wichita Ks.	Date	7/31/84
Company Rep.	Leah Ann Kasten	Tester	Dave Hunt
Contractor	Murfin Drilling Company	Elevation	2211 KB
Location: Sec. 8 Twp. 6 Rge. 21w Co. Graham State Ks.	Est. Feet of Pay		

Recorder No. 13275 Type Ak-1 Range 3950 PSI

Recorder Depth 3517 Clock # 25929

(A) Initial Hydrostatic Mud 1970 PSI

(B) First Initial Flow Pressure 110 PSI

(C) First Final Flow Pressure 140 PSI

(D) Initial Shut-in Pressure 1186 PSI

(E) Second Initial Flow Pressure 170 PSI

(F) Second Final Flow Pressure 180 PSI

(G) Final Shut-in Pressure 1186 PSI

(H) Final Hydrostatic Mud 1901 PSI

Temperature 105

Mud Weight 9.7 Viscosity 42

Fluid Loss 10

Interval Tested 3482-3520

Anchor Length 38

Top Packer Depth 3868

Bottom Packer Depth 3873

Total Depth 3520

Drill Pipe Size 4 1/2 Xh

Wt. Pipe I. D. Ft. Run

Recovery-Total Feet 268

Recovered 268 Feet Of oil specked mud.

Recovered Feet Of

Recovered Feet Of

Recovered Feet Of

Recovered Feet Of

Recovered Feet Of

Extra Equipment

Recorder No. 13276 Type Ak-1 Range 3950 PSI

Recorder Depth 3514 Clock # 22345

Tool Open Before I.S.I. 30 Mins.

Initial Shut-in 30 Mins.

Flow Period 30 Mins.

Final Shut-in 30 Mins.

Top Choke Size 1" Hole Size 7 7/8"

Bottom Choke Size 3/4" Rubber Size 6 3/4"

Tool Open @ 11:15 Am

Blow Remarks 1st open: Weak blow, died in 20 minutes.

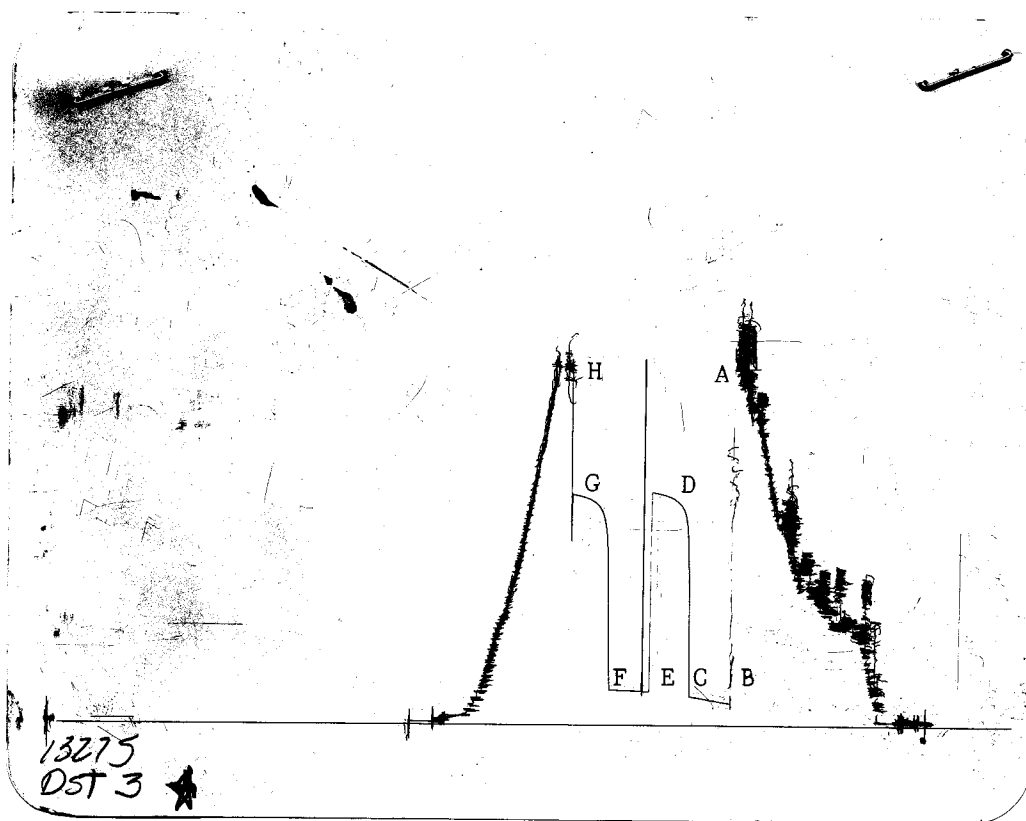
2nd open: No blow, flushed tool, weak blow, died in 2 minutes.

Well Chlorides: 4,000 ppm

Recovery Chlorides: 4,000 ppm

Drill Collars: 2.25 Ft. Run: 238

Price of Job \$625.00



This is an actual photograph of recorder chart.

POINT	PRESSURE	
	Field Reading	Office Reading
(A) Initial Hydrostatic Mud .....	1970	PSI
(B) First Initial Flow Pressure .....	110	PSI
(C) First Final Flow Pressure .....	140	PSI
(D) Initial Closed-in Pressure .....	1186	PSI
(E) Second Initial Flow Pressure .....	170	PSI
(F) Second Final Flow Pressure .....	180	PSI
(G) Final Closed-in Pressure .....	1186	PSI
(H) Final Hydrostatic Mud .....	1901	PSI

# CHENEY TESTING COMPANY, INC.

P. O. Box 367

HILL CITY, KANSAS 67642

## DRILL-STEM TEST DATA

Company	A. Scott Ritchie	Test No.	4
Well Name & Number	A. Carl Boys #1	Zone Tested	Lansing
Company Address	125 N Market Suite 950 Wichita Ks.	Date	8/1/84
Company Rep.	Leah Ann Kasten	Tester	Dave Hunt
Contractor	Murfin Drilling Company	Elevation	2211 KB
Location: Sec. 8 Twp. 6 Rge. 21w Co. Graham State Ks.		Est. Feet of Pay	

Recorder No. 13275 Type Ak-1 Range 3950 PSI

Recorder Depth 3517 Clock # 23929

(A) Initial Hydrostatic Mud 1950 PSI

(B) First Initial Flow Pressure 210 PSI

(C) First Final Flow Pressure 210 PSI

(D) Initial Shut-in Pressure 330 PSI

(E) Second Initial Flow Pressure 210 PSI

(F) Second Final Flow Pressure 210 PSI

(G) Final Shut-in Pressure 310 PSI

(H) Final Hydrostatic Mud 1930 PSI

Temperature 106

Mud Weight 9.7 Viscosity 46

Fluid Loss 10.4

Interval Tested 3571-3634

Anchor Length 63

Top Packer Depth 3561

Bottom Packer Depth 3566

Total Depth 3520

Drill Pipe Size 4 1/2 Xh

Wt. Pipe I. D. Ft. Run

Recovery-Total Feet 298

Recovered 298 Feet Of mud.

Recovered Feet Of

Recovered Feet Of

Recovered Feet Of

Recovered Feet Of

Recovered Feet Of

Extra Equipment

Recorder No. 13276 Type Ak-1 Range 3950 PSI

Recorder Depth 3514 Clock # 22345

Tool Open Before I.S.I. 30 Mins.

Initial Shut-in 30 Mins.

Flow Period 30 Mins.

Final Shut-in 30 Mins.

Top Choke Size 1" Hole Size 7 7/8"

Bottom Choke Size 3/4" Rubber Size 6 3/4"

Tool Open @ 9:30 AM

Blow Remarks 1st open: Weak blow, died in 10 minutes.

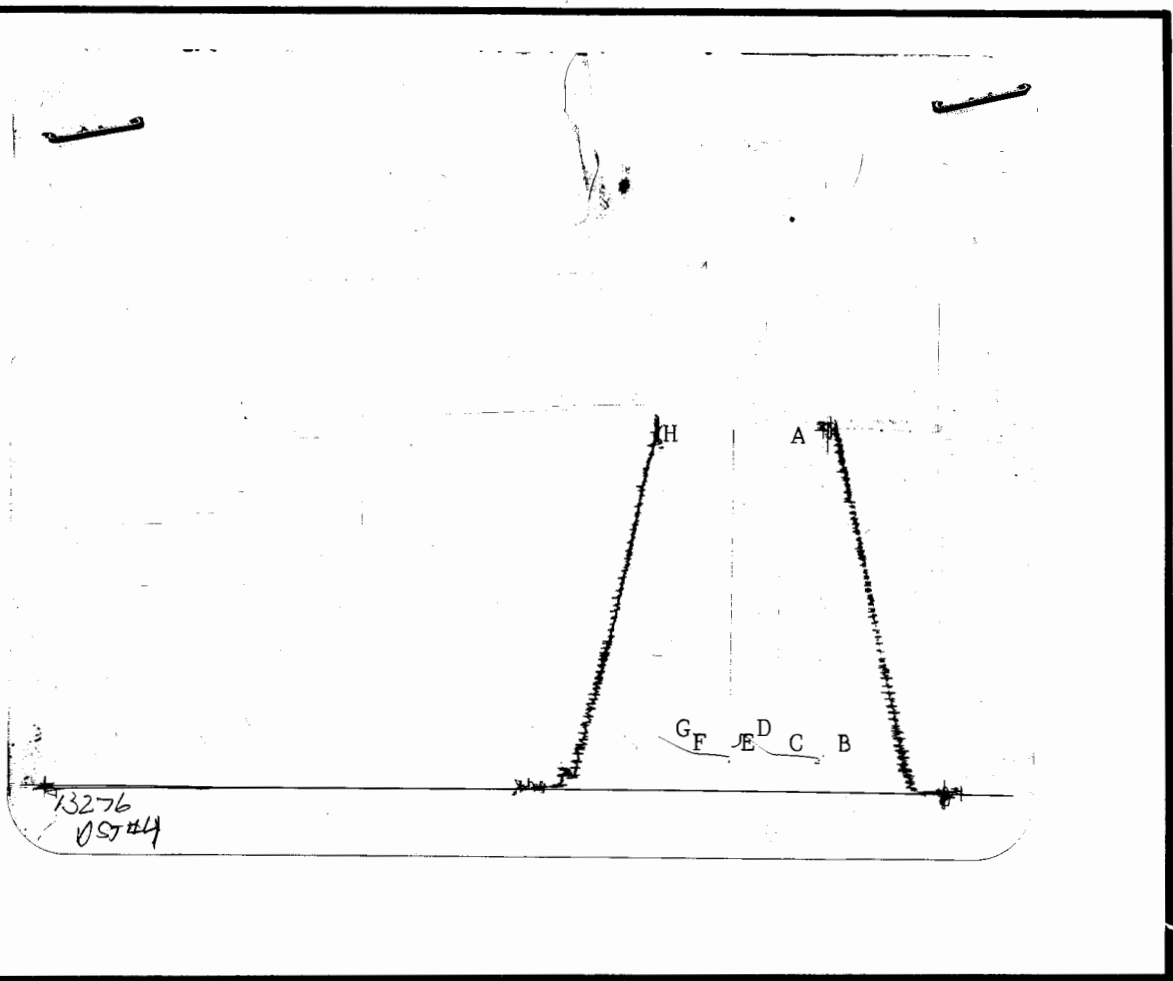
2nd open: Flushed tool, good surge, no return blow.

Well chlorides: 5,000 ppm

Recovery Chlorides: 5,000 ppm

Drill Collars: 2.25 Ft. Run: 238

Price of Job \$625.00



This is an actual photograph of recorder chart.

POINT	PRESSURE	
	Field Reading	Office Reading
(A) Initial Hydrostatic Mud .....	1950	PSI
(B) First Initial Flow Pressure .....	210	PSI
(C) First Final Flow Pressure .....	210	PSI
(D) Initial Closed-in Pressure .....	330	PSI
(E) Second Initial Flow Pressure .....	210	PSI
(F) Second Final Flow Pressure .....	210	PSI
(G) Final Closed-in Pressure .....	310	PSI
(H) Final Hydrostatic Mud .....	1930	PSI