

**WELL NAME:** MIDDY 1-22  
**COMPANY:** A.L. ABERCROMBIE, INC.  
**LOCATION:** SEC. 22 TWP. 6S RGE. 26W  
SHERIDAN COUNTY KANSAS  
**DATE:** 01-06-97

TRILOBITE TESTING L.L.C.

OPERATOR : A.L. Ambercrombie, Inc.  
 WELL NAME: Middy 1-22  
 LOCATION : 22-6S-26W Sheridan KS  
 INTERVAL : 3767.00 To 3789.00 ft

DATE 1/4/97  
 KB 2627.00 ft  
 GR 2622.00 ft  
 TD 3789.00 ft  
 TICKET NO: 9675  
 FORMATION: Lansing KC "B"  
 TEST TYPE: CONV  
 DST #1

RECORDER DATA

Mins		Field	1	2	3	4	TIME DATA-----
PF 30	Rec.	10332	10332	24174			PF Fr. 0602 to 0632 hr
SI 30	Range(Psi )	4025.0	4025.0	3050.0	0.0	0.0	IS Fr. 0632 to 0702 hr
SF 30	Clock(hrs)	12hr	12hr	12hr			SF Fr. 0702 to 0732 hr
FS 30	Depth(ft )	3784.0	3784.0	3770.0	0.0	0.0	FS Fr. 0732 to 0802 hr

	Field	1	2	3	4	
A. Init Hydro	1835.0	1877.0	0.0	0.0	0.0	T STARTED 0450 hr
B. First Flow	41.0	43.0	0.0	0.0	0.0	T ON BOTM 0600 hr
B1. Final Flow	51.0	47.0	0.0	0.0	0.0	T OPEN 0602 hr
C. In Shut-in	963.0	974.0	0.0	0.0	0.0	T PULLED 0802 hr
D. Init Flow	61.0	90.0	0.0	0.0	0.0	T OUT 0927 hr
E. Final Flow	61.0	63.0	0.0	0.0	0.0	
F. Fl Shut-in	953.0	954.0	0.0	0.0	0.0	TOOL DATA-----
G. Final Hydro	1794.0	1870.0	0.0	0.0	0.0	Tool Wt. 2000.00 lbs
Inside/Outside	o	o	i			Wt Set On Packer 20000.00 lbs
						Wt Pulled Loose 56000.00 lbs
						Initial Str Wt 42000.00 lbs
						Unseated Str Wt 42000.00 lbs
						Bot Choke 0.75 in
						Hole Size 7.88 in
						D Col. ID 2.25 in
						D. Pipe ID 3.80 in
						D.C. Length 0.00 ft
						D.P. Length 3208.00 ft
						H.W. I.D 2.70 in
						H.W. Length 568.00 ft

RECOVERY

Tot Fluid 30.00 ft of 0.00 ft in DC and 0.00 ft in DP  
 30.00 ft of Mud with oil specks in tool  
 0.00 ft of  
 0.00 ft of  
 0.00 ft of  
 0.00 ft of  
 0.00 ft of  
 0.00 ft of  
 0.00 ft of  
 0.00 ft of  
 SALINITY 0.00 P.P.M. A.P.I. Gravity 0.00

BLOW DESCRIPTION

Initial Flow:  
 Weak Surface Blow Throughout  
 Initial Shut In:

Final Flow:  
 No Blow, Flush tool, No Blow After Surge

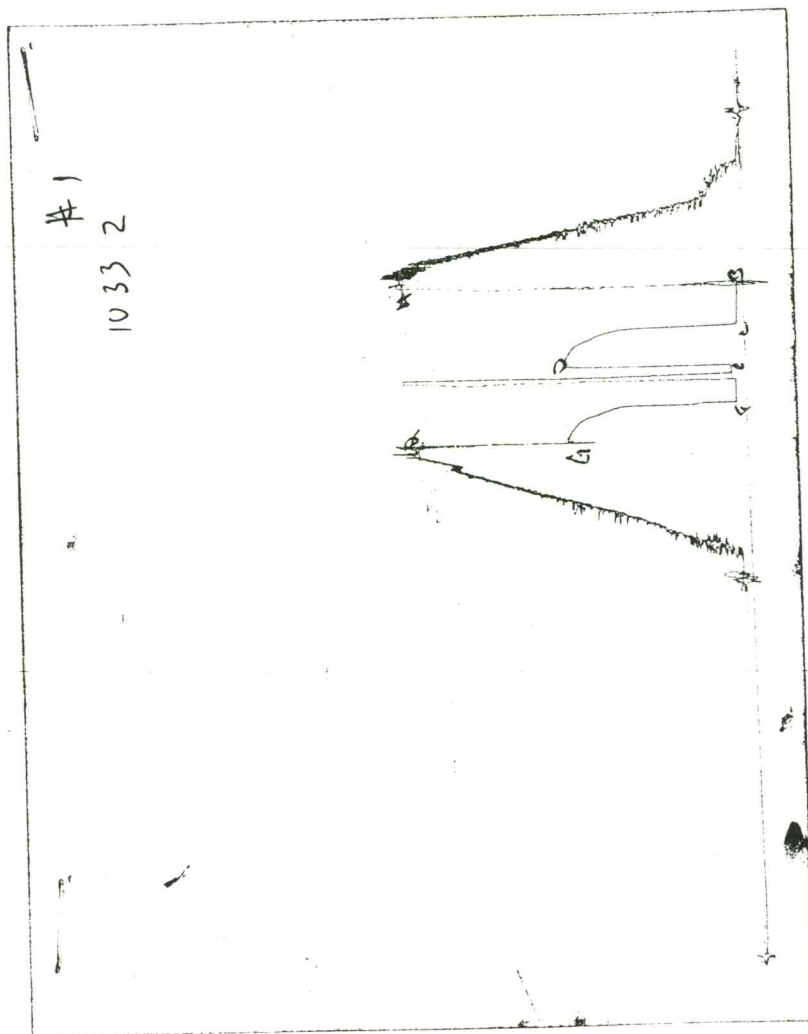
Final Shut In:

SAMPLES:  
 SENT TO:

MUD DATA-----  
 Mud Type Chemical  
 Weight 9.10 lb/cf  
 Vis. 44.00 S/L  
 W.L. 0.00 in3  
 F.C. 0.00 in  
 Mud Drop  
 Amt. of fill 0.00 ft  
 Btm. H. Temp. 106.00 F  
 Hole Condition  
 % Porosity 0.00  
 Packer Size 6.75 in  
 No. of Packers 2  
 Cushion Amt. 0.00  
 Cushion Type  
 Reversed Out  
 Tool Chased  
 Tester Paul Simpson  
 Co. Rep. Kitt Noah  
 Contr. Ambercrombie  
 Rig # 8  
 Unit #  
 Pump T.

Test Successful: Y

CHART PAGE



This is a photocopy of the actual AK-1 recorder chart

TRILOBITE TESTING L.L.C.

ERATOR : A.L. Ambercrombie, Inc.  
 LL NAME: Middy 1-22  
 CATION : 22-6S-26W Sheridan, KS  
 TERVAL : 3848.00 To 3923.00 ft

DATE 1/5/97  
 KB 2627.00 ft  
 GR 2622.00 ft  
 TD 3923.00 ft  
 TICKET NO: 9776  
 FORMATION: Lansing KC "B"  
 DST #2  
 TEST TYPE: CONV

CORDER DATA

ins		Field	1	2	3	4	TIME DATA-----
30	Rec.	24174	24174	10332			PF Fr. 0255 to 0325 hr
30	Range(Psi )	3050.0	3050.0	4025.0	0.0	0.0	IS Fr. 0325 to 0355 hr
30	Clock(hrs)	12hr	12hr	12hr			SF Fr. 0355 to 0425 hr
30	Depth(ft )	3854.0	3854.0	3918.0	0.0	0.0	FS Fr. 0425 to 0455 hr

	Field	1	2	3	4	
Init Hydro	1947.0	1825.0	0.0	0.0	0.0	T STARTED 0147 hr
First Flow	51.0	64.0	0.0	0.0	0.0	T ON BOTM 0250 hr
Final Flow	51.0	47.0	0.0	0.0	0.0	T OPEN 0255 hr
In Shut-in	740.0	684.0	0.0	0.0	0.0	T PULLED 0455 hr
Init Flow	51.0	61.0	0.0	0.0	0.0	T OUT 0615 hr
Final Flow	51.0	53.0	0.0	0.0	0.0	
Fl Shut-in	628.0	562.0	0.0	0.0	0.0	TOOL DATA-----
Final Hydro	1937.0	1712.0	0.0	0.0	0.0	Tool Wt. 2200.00 lbs
side/Outside	i	i	o			Wt Set On Packer 20000.00 lbs
						Wt Pulled Loose 58000.00 lbs
						Initial Str Wt 44000.00 lbs

COVERY						
0.00	ft Fluid	20.00 ft of	0.00 ft in DC and	0.00 ft in DP		Unseated Str Wt 44000.00 lbs
0.00	ft of	Oil Specked Mud				Bot Choke 0.75 in
0.00	ft of					Hole Size 7.88 in
0.00	ft of					D Col. ID 2.25 in
0.00	ft of					D. Pipe ID 3.80 in
0.00	ft of					D.C. Length 0.00 ft
0.00	ft of					D.P. Length 3330.00 ft
0.00	ft of					H.W. I.D 2.70 in
0.00	ft of					H.W. Length 504.00 ft

ALINITY 0.00 P.P.M. A.P.I. Gravity 0.00

LOW DESCRIPTION

Initial Flow:  
 1/4" Blow Decreasing and Died in  
 20 minutes

Initial Shut In:

Final Flow:  
 No Blow, Flush Tool, No Blow After  
 Surge

Final Shut In:

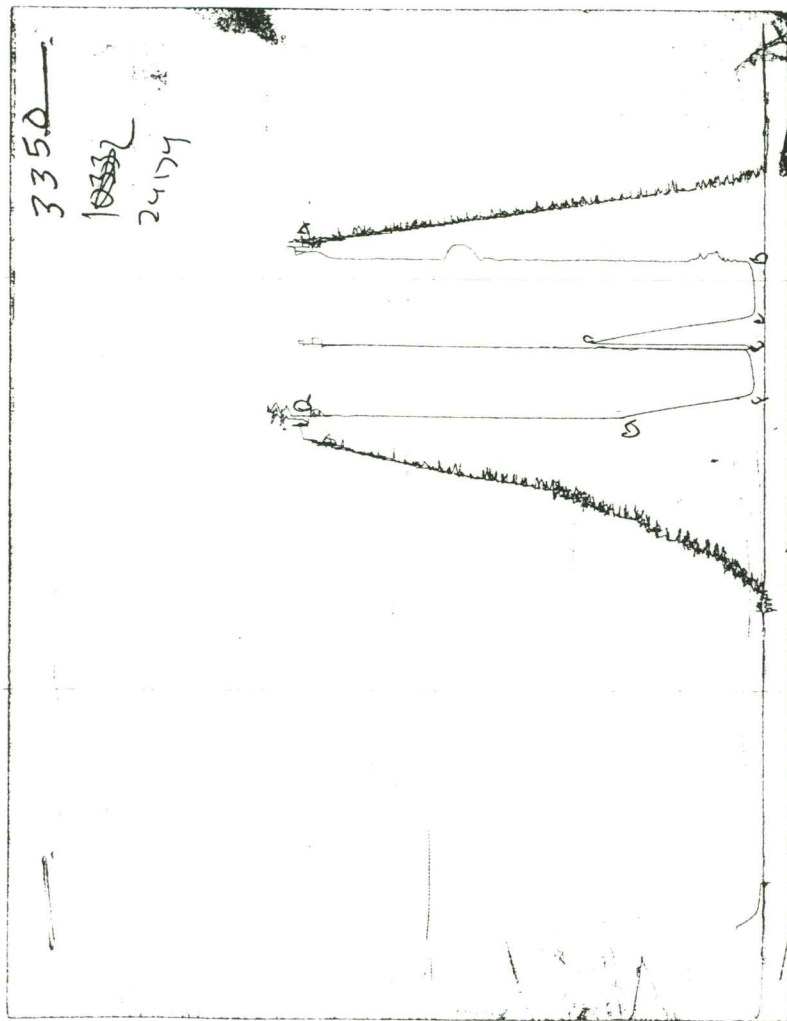
SAMPLES:

SENT TO:

MUD DATA-----	
Mud Type	Chemical
Weight	9.40 lb/cf
Vis.	46.00 S/L
W.L.	10.40 in3
F.C.	0.00 in
Mud Drop	
Amt. of fill	0.00 ft
Btm. H. Temp.	108.00 F
Hole Condition	
% Porosity	0.00
Packer Size	6.75 in
No. of Packers	2
Cushion Amt.	0.00
Cushion Type	
Reversed Out	
Tool Chased	
Tester	Paul Simpson
Co. Rep.	Kitt Noah
Contr.	Abercrombie
Rig #	8
Unit #	
Pump T.	

Test Successful: Y

CHART PAGE



This is a photocopy of the actual AK-1 recorder chart