

WELL NAME: Stephenson #1

COMPANY: Hess Oil Co

LOCATION - SEC: 7

TWP: 6S

RGE: 26W

COUNTY: Sheridan

STATE: KS

DATE: 10/08/95

TRILOBITE TESTING L.L.C.

OPERATOR : Hess Oil Company
 WELL NAME: Stephenson #1
 LOCATION : 7-6S-26W, Sheridan Cty KS
 INTERVAL : 3740.00 To 3845.00 ft

DATE 10/07/95
 KB 2638.00 ft
 GR 2633.00 ft
 TD 3845.00 ft

TICKET NO: 8547
 FORMATION: Top Lansing
 TEST TYPE: CONVENTIONAL
 DST #1

RECORDER DATA

Mins		Field	1	2	3	4	TIME DATA-----
PF 60	Rec.	13754	13754	13849			PF Fr. 1620 to 1720 hr
SI 45	Range(Psi)	4000.0	4000.0	4375.0	0.0	0.0	IS Fr. 1720 to 1805 hr
SF 30	Clock(hrs)	12 hr	12 hr	12 hr			SF Fr. 1805 to 1835 hr
FS 45	Depth(ft)	3744.0	3744.0	3841.0	0.0	0.0	FS Fr. 1835 to 1920 hr

	Field	1	2	3	4	
A. Init Hydro	2087.0	2078.0	0.0	0.0	0.0	T STARTED 1520 hr
B. First Flow	68.0	86.0	0.0	0.0	0.0	T ON BOTM hr
Bl. Final Flow	98.0	121.0	0.0	0.0	0.0	T OPEN 1620 hr
C. In Shut-in	590.0	612.0	0.0	0.0	0.0	T PULLED 1920 hr
D. Init Flow	137.0	148.0	0.0	0.0	0.0	T OUT 2045 hr
E. Final Flow	137.0	148.0	0.0	0.0	0.0	
F. Fl Shut-in	590.0	604.0	0.0	0.0	0.0	TOOL DATA-----
G. Final Hydro	1986.0	1993.0	0.0	0.0	0.0	Tool Wt. 0.00 lbs
Inside/Outside	I	I	O			Wt Set On Packer 30000.00 lbs
						Wt Pulled Loose 55000.00 lbs
						Initial Str Wt 50000.00 lbs
						Unseated Str Wt 50000.00 lbs
						Bot Choke 0.75 in
						Hole Size 7.88 in
						D Col. ID 2.25 in
						D. Pipe ID 3.80 in
						D.C. Length 240.00 ft
						D.P. Length 3433.00 ft

RECOVERY

Tot Fluid 240.00 ft of 240.00 ft in DC and 0.00 ft in DP
 240.00 ft of Drilling Mud

SALINITY 0.00 P.P.M. A.P.I. Gravity 0.00

BLOW DESCRIPTION

Initial Blow -
 Weak, building to 2"

Final Blow -
 Very weak surface blow after 28 min

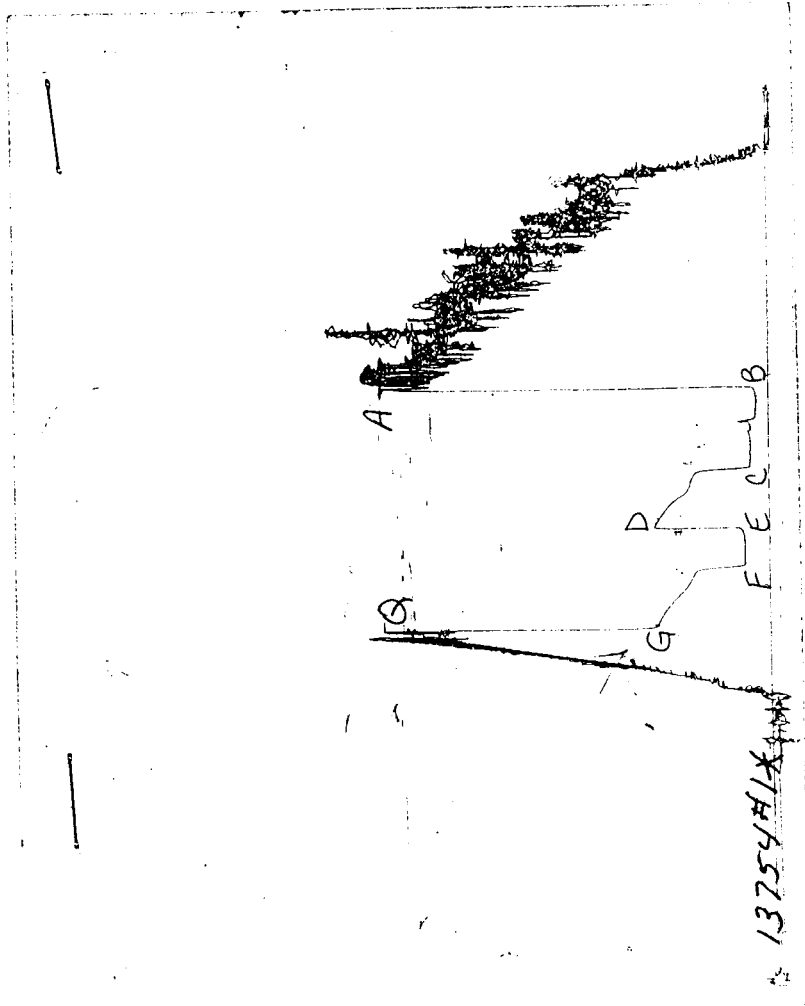
MUD DATA-----

Mud Type	Chemical
Weight	0.00 lb/c
Vis.	0.00 S/L
W.L.	0.00 in3
F.C.	0.00 in
Mud Drop	
Amt. of fill	0.00 ft
Btm. H. Temp.	110.00 F
Hole Condition	
% Porosity	0.00
Packer Size	6.75 in
No. of Packers	2
Cushion Amt.	0.00
Cushion Type	
Reversed Out	
Tool Chased	
Tester	Dan Bangle
Co. Rep.	James Hess
Contr.	Mallard
Rig #	2
Unit #	
Pump T.	

SAMPLES:
 SENT TO:

Test Successful: Y

CHART PAGE



This is an actual photograph of recorder chart

TRILOBITE TESTING L.L.C.

OPERATOR : Hess Oil Company
 WELL NAME: Stephenson #1
 LOCATION : 7-6S-26W, Sheridan Cty KS
 INTERVAL : 3860.00 To 3950.00 ft

DATE 10/08/95
 KB 2638.00 ft
 GR 2633.00 ft
 TD 3950.00 ft

TICKET NO: 8548
 FORMATION: Kansas City
 TEST TYPE: CONVENTIONAL

DST #2

RECORDER DATA

Mins	Field	1	2	3	4	TIME DATA-----	
PF 30	Rec.	13754	13754	13849		PF Fr. 1030 to 1100 hr	
SI 30	Range(Psi)	4000.0	4000.0	4375.0	0.0	0.0	IS Fr. 1100 to 1130 hr
SF 0	Clock(hrs)	12 hr	12 hr	12 hr			SF Fr. to hr
FS 0	Depth(ft)	3864.0	3864.0	3946.0	0.0	0.0	FS Fr. to hr

	Field	1	2	3	4	
A. Init Hydro	2076.0	2058.0	0.0	0.0	0.0	T STARTED 0910 hr
B. First Flow	19.0	30.0	0.0	0.0	0.0	T ON BOTM hr
Bl. Final Flow	19.0	30.0	0.0	0.0	0.0	T OPEN 1030 hr
C. In Shut-in	669.0	678.0	0.0	0.0	0.0	T PULLED 1130 hr
D. Init Flow	0.0	0.0	0.0	0.0	0.0	T OUT 1230 hr
E. Final Flow	0.0	0.0	0.0	0.0	0.0	
F. Fl Shut-in	0.0	0.0	0.0	0.0	0.0	TOOL DATA-----
G. Final Hydro	2006.0	2008.0	0.0	0.0	0.0	Tool Wt. 0.00 lbs
Inside/Outside	I	I	O			Wt Set On Packer 30000.00 lbs
						Wt Pulled Loose 55000.00 lbs
						Initial Str Wt 50000.00 lbs
						Unseated Str Wt 50000.00 lbs
						Bot Choke 0.75 in
						Hole Size 7.88 in
						D Col. ID 2.25 in
						D. Pipe ID 3.80 in
						D.C. Length 240.00 ft
						D.P. Length 3658.00 ft

RECOVERY

Tot Fluid 10.00 ft of 10.00 ft in DC and 0.00 ft in DP
 10.00 ft of Drilling mud

SALINITY 0.00 P.P.M. A.P.I. Gravity 0.00

BLOW DESCRIPTION

Initial Blow -
 Weak, died in 10 min

MUD DATA-----

Mud Type	Chemical
Weight	9.50 lb/c
Vis.	43.00 S/L
W.L.	7.00 in3
F.C.	0.00 in
Mud Drop	

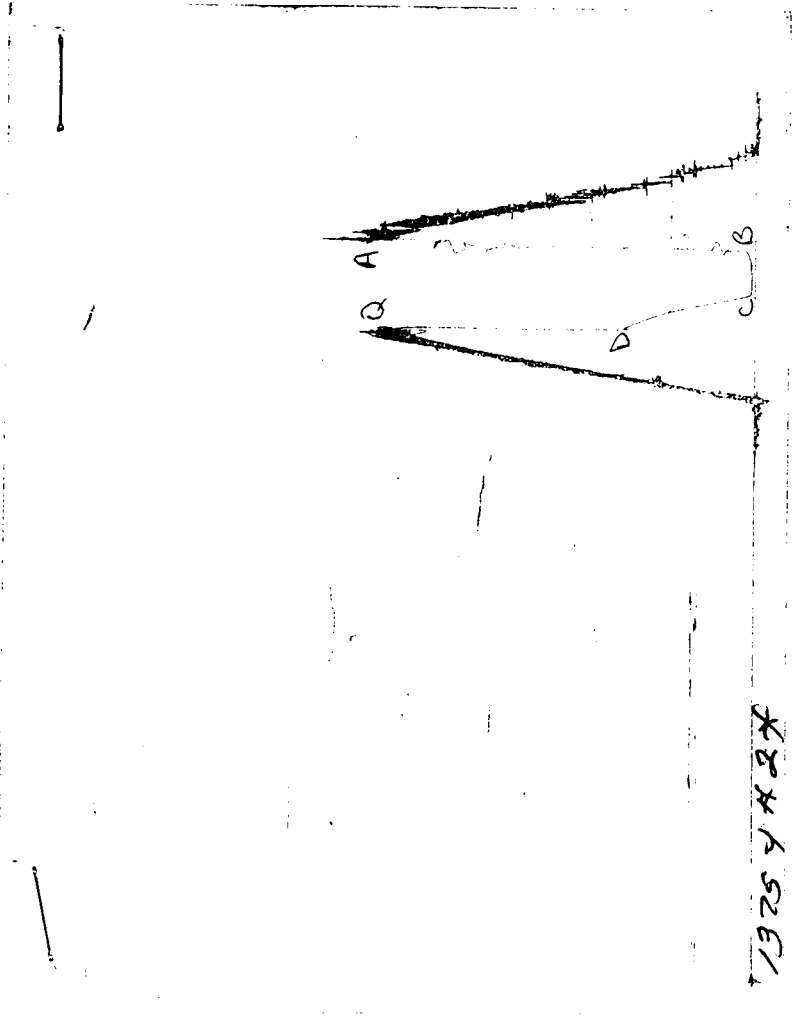
Amt. of fill	0.00 ft
Btm. H. Temp.	112.00 F
Hole Condition	
% Porosity	0.00
Packer Size	6.75 in
No. of Packers	2
Cushion Amt.	0.00
Cushion Type	
Reversed Out	
Tool Chased	

SAMPLES:
 SENT TO:

Tester Dan Bangle
 Co. Rep. Jamie Hess
 Contr. Mallard
 Rig # 2
 Unit #
 Pump T.

Test Successful: Y

CHART PAGE



This is an actual photograph of recorder chart