



15-193-20702

16-65-36w

DIAMOND TESTING

P.O. Box 157
HOISINGTON, KANSAS 67544
(620) 653-7550 • (800) 542-7313
STC 21083.D180

Page 1 of 2 Pages

Company L. D. Drilling, Inc. Lease & Well No. Robison "C" No. 1
 Elevation 3383KB Formation Wabaunsee Effective Pay -- Ft. Ticket No. J1770
 Date 11-14-05 Sec. 16 Twp. 6S Range 36W County Thomas State Kansas
 Test Approved By Kim Shoemaker Diamond Representative John C. Riedl

Formation Test No. 1 Interval Tested from 3,912 ft. to 4,009 ft. Total Depth 4,009 ft.
 Packer Depth 3,907 ft. Size 6 3/4 in. Packer Depth -- ft. Size -- in.
 Packer Depth 3,912 ft. Size 6 3/4 in. Packer Depth -- ft. Size -- in.

Depth of Selective Zone Set ft.
 Top Recorder Depth (Inside) 3,918 ft. Recorder Number 21083 Cap. 5,000 psi
 Bottom Recorder Depth (Outside) 4,006 ft. Recorder Number 11017 Cap. 4,000 psi
 Below Straddle Recorder Depth ft. Recorder Number Cap. psi

Drilling Contractor L. D. Drilling, Inc. - Rig 1 Drill Collar Length -- ft. I.D. -- in.
 Mud Type Chemical Viscosity 46 Weight Pipe Length -- ft. I.D. -- in.
 Weight 8.8 Water Loss 10 cc. Drill Pipe Length 3,892 ft. I.D. 3 1/2 in.
 Chlorides 5,000 P.P.M. Test Tool Length 20 ft. Tool Size 3 1/2 - IF in.
 Jars: Make Bowen Serial Number Not Run Anchor Length 97 ft. Size 4 1/2 - FH in.
 Did Well Flow? No Reversed Out No Surface Choke Size 1 in. Bottom Choke Size 5/8 in.
 Main Hole Size 7 7/8 in. Tool Joint Size 4 1/2 - XH in.

Blow: 1st Open: Weak, 1 in., blow.
 2nd Open: Weak, 1/2 in., blow.

Recovered 65 ft. of heavy oil cut mud = .666900 bbls. (Grind out: 40%-oil; 60%-mud)
 Recovered ft. of
 Recovered ft. of
 Recovered ft. of
 Recovered ft. of

Remarks

Time Set Packer(s) 1:20 ~~P.M.~~ ^{A.M.} Time Started Off Bottom 3:20 ~~P.M.~~ ^{A.M.} Maximum Temperature 114°
 Initial Hydrostatic Pressure (A) 1792 P.S.I.
 Initial Flow Period Minutes 30 (B) 23 P.S.I. to (C) 35 P.S.I.
 Initial Closed In Period Minutes 30 (D) 1048 P.S.I.
 Final Flow Period Minutes 30 (E) 38 P.S.I. to (F) 46 P.S.I.
 Final Closed In Period Minutes 30 (G) 1039 P.S.I.
 Final Hydrostatic Pressure (H) 1763 P.S.I.

GENERAL INFORMATION

Client Information:

Company: L D DRILLING INC

Contact: L D DAVIS

Phone: Fax: e-mail:

Site Information:

Contact: KIM SHOEMAKER

Phone: Fax: e-mail:

Well Information:

Name: #1 ROBINSON "C"

Operator:

Location-Downhole: DST #1 3912 TO 4009

Location-Surface: S16 / 6S / 36W THOMAS COUNTY

Test Information:

Company: DIAMOND TESTING

Representative: JOHN RIEDL

Supervisor: KIM SHOEMAKER

Test Type: CONVENTIONAL Job Number: D180

Test Unit: 2

Start Date: 2005/11/13 Start Time: 23:40:00

End Date: 2005/11/14 End Time: 06:05:00

Report Date: 2005/11/14 Prepared By: JOHN RIEDL

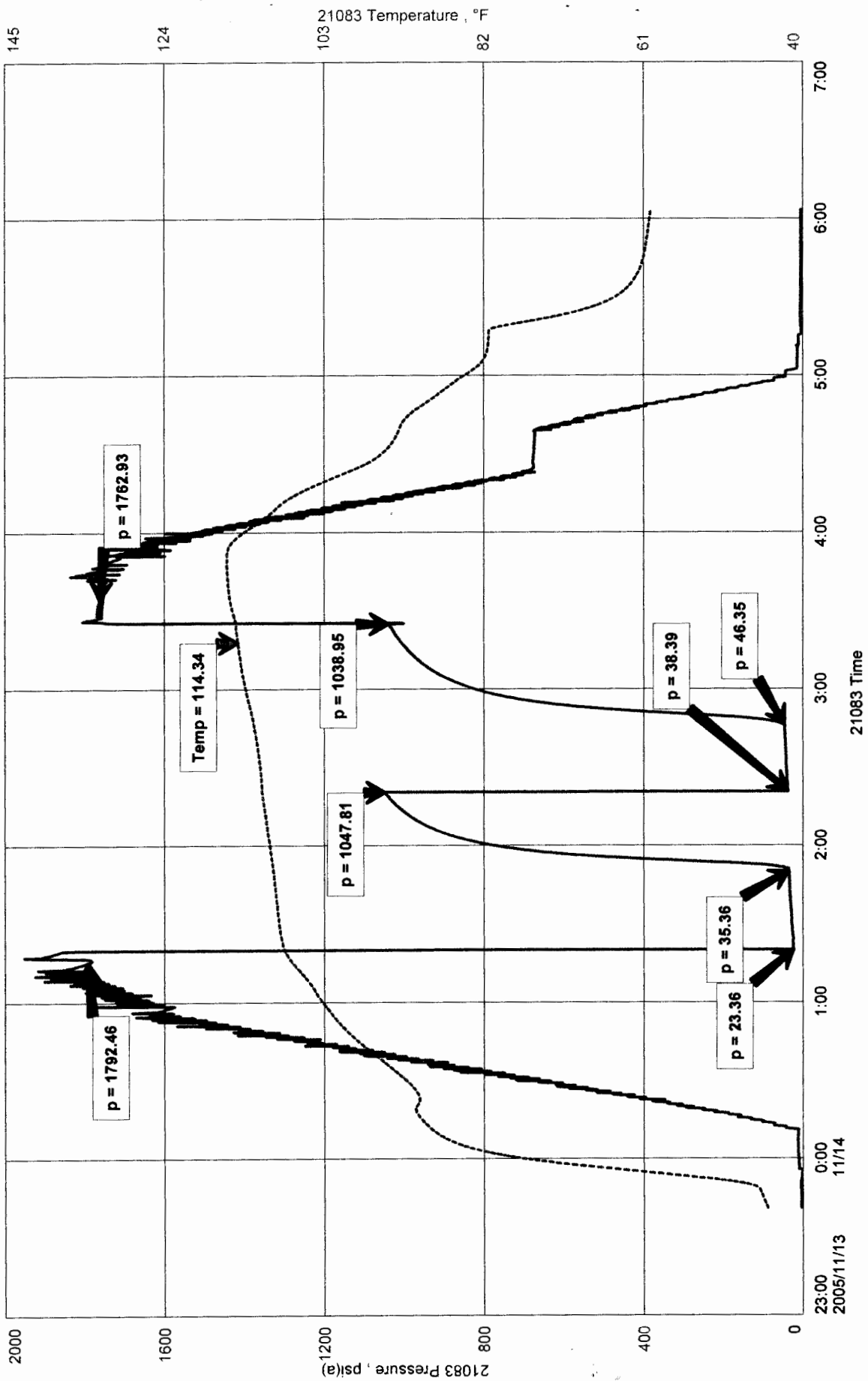
Remarks: Qualified By: KIM SHOEMAKER

RECOVERY: 65' HVYOCM (40%OIL 60%MUD)

#1 ROBINSON "C"
 Formation: WAUBAUNSEE
 Job Number: D180

L D DRILLING INC
 DST #1 3912 TO 4009
 Start Test Date: 2005/11/13
 Final Test Date: 2005/11/14

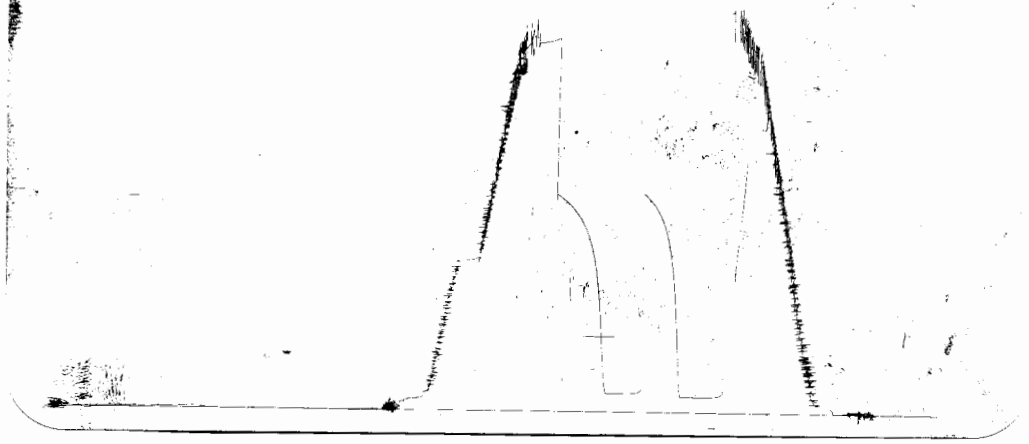
#1 ROBINSON "C"



L.D.
#1 ROBINSON

VST #7

RUC # 14017
OUTSIDE



This is an actual photograph of recorder chart.

POINT	PRESSURE		Elec. Office Reading	PSI
	Field Reading			
(A) Initial Hydrostatic Mud	1792	1792		PSI
(B) First Initial Flow Pressure	23	23		PSI
(C) First Final Flow Pressure	35	35		PSI
(D) Initial Closed-in Pressure	1048	1048		PSI
(E) Second Initial Flow Pressure	38	38		PSI
(F) Second Final Flow Pressure	46	46		PSI
(G) Final Closed-in Pressure	1039	1039		PSI
(H) Final Hydrostatic Mud	1763	1763		PSI



DIAMOND TESTING

P.O. Box 157
HOISINGTON, KANSAS 67544
(620) 653-7550 • (800) 542-7313
STC 21083.D181

Page 1 of 2 Pages

Company L. D. Drilling, Inc. Lease & Well No. Robison "C" No. 1
Elevation 3383KB Formation Lansing/Kansas City Effective Pay -- Ft. Ticket No. J1771
Date 11-15-05 Sec. 16 Twp. 6S Range 36W County Thomas State Kansas
Test Approved By Kim Shoemaker Diamond Representative John C. Riedl

Formation Test No. 2 Interval Tested from 4,202 ft. to 4,280 ft. Total Depth 4,280 ft.
Packer Depth 4,197 ft. Size 6 3/4 in. Packer Depth -- ft. Size -- in.
Packer Depth 4,202 ft. Size 6 3/4 in. Packer Depth -- ft. Size -- in.
Depth of Selective Zone Set -- ft.

Top Recorder Depth (Inside) 4,206 ft. Recorder Number 21083 Cap. 5,000 psi
Bottom Recorder Depth (Outside) 4,277 ft. Recorder Number 11017 Cap. 4,000 psi
Below Straddle Recorder Depth -- ft. Recorder Number -- Cap. -- psi

Drilling Contractor L. D. Drilling, Inc. - Rig 1 Drill Collar Length -- ft. I.D. -- in.
Mud Type Chemical Viscosity 49 Weight Pipe Length -- ft. I.D. -- in.
Weight 9.0 Water Loss 10.0 cc. Drill Pipe Length 4,182 ft. I.D. 3 1/2 in.
Chlorides 4,000 P.P.M. Test Tool Length 20 ft. Tool Size 3 1/2 - IF in.
Jars: Make Bowen Serial Number Not Run Anchor Length 78 ft. Size 4 1/2 - FH in.
Did Well Flow? No Reversed Out No Surface Choke Size 1 in. Bottom Choke Size 5/8 in.
Main Hole Size 7 7/8 in. Tool Joint Size 4 1/2 - XH in.

Blow: 1st Open: Fair blow. Building throughout to 5 ins. No blow back during shut-in.
2nd Open: Weak blow. Building throughout to 2 1/2 ins. No blow back during shut-in.

Recovered 125 ft. of oil specked water cut mud = 1.282500 bbls. (Grind out: 15%-water; 85%-mud) Chlorides: 14,000 Ppm
Recovered -- ft. of --
Recovered -- ft. of --
Recovered -- ft. of --
Recovered -- ft. of --

Remarks --

Time Set Packer(s) 7:50 ~~P.M.~~ A.M. Time Started Off Bottom 10:50 ~~P.M.~~ A.M. Maximum Temperature 121°
Initial Hydrostatic Pressure (A) 1955 P.S.I.
Initial Flow Period Minutes 30 (B) 23 P.S.I. to (C) 44 P.S.I.
Initial Closed In Period Minutes 45 (D) 1283 P.S.I.
Final Flow Period Minutes 45 (E) 45 P.S.I. to (F) 79 P.S.I.
Final Closed In Period Minutes 60 (G) 1264 P.S.I.
Final Hydrostatic Pressure (H) 1929 P.S.I.

GENERAL INFORMATION

Client Information:

Company: L D DRILLING INC

Contact: L D DAVIS

Phone: Fax: e-mail:

Site Information:

Contact: KIM SHOEMAKER

Phone: Fax: e-mail:

Well Information:

Name: #1 ROBINSON "C"

Operator: L D DRILLING INC

Location-Downhole: DST #2 4202-4280

Location-Surface: S16/6S/36W THOMAS COUNTY

Test Information:

Company: DIAMOND TESTING

Representative: JOHN RIEDL

Supervisor: KIM SHOEMAKER

Test Type: CONVENTIONAL Job Number: D181

Test Unit: 2

Start Date: 2005/11/15 Start Time: 06:05:00

End Date: 2005/11/15 End Time: 12:45:00

Report Date: 2005/11/15 Prepared By: JOHN RIEDL

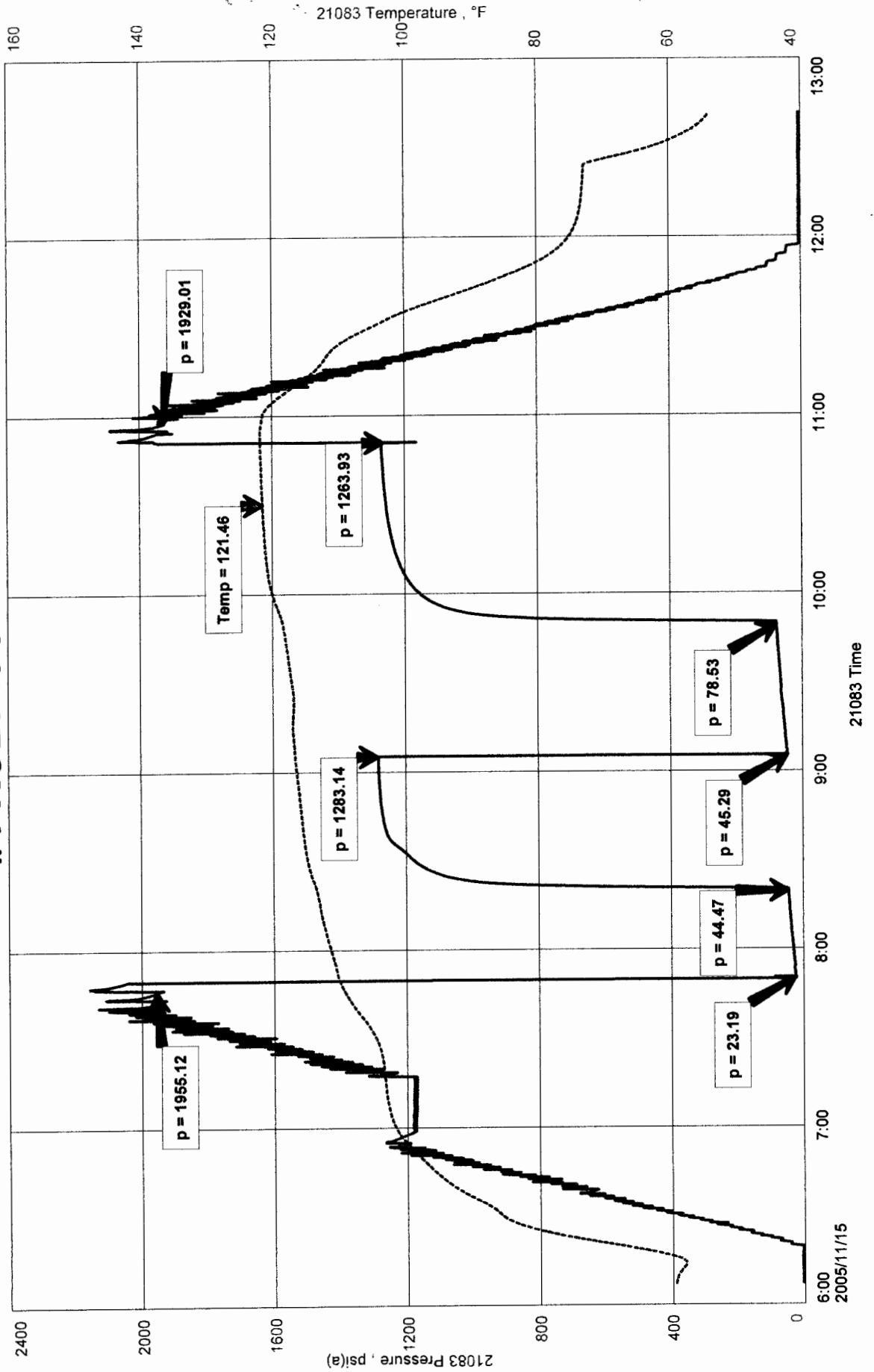
Remarks: Qualified By: KIM SHOEMAKER

RECOVERY: 125' OILSPECKEDWCM (15%WATER 85%MUD) CHLORIDES 14,000Ppm

L D DRILLING INC
DST #2 4202-4280
Start Test Date: 2005/11/15
Final Test Date: 2005/11/15

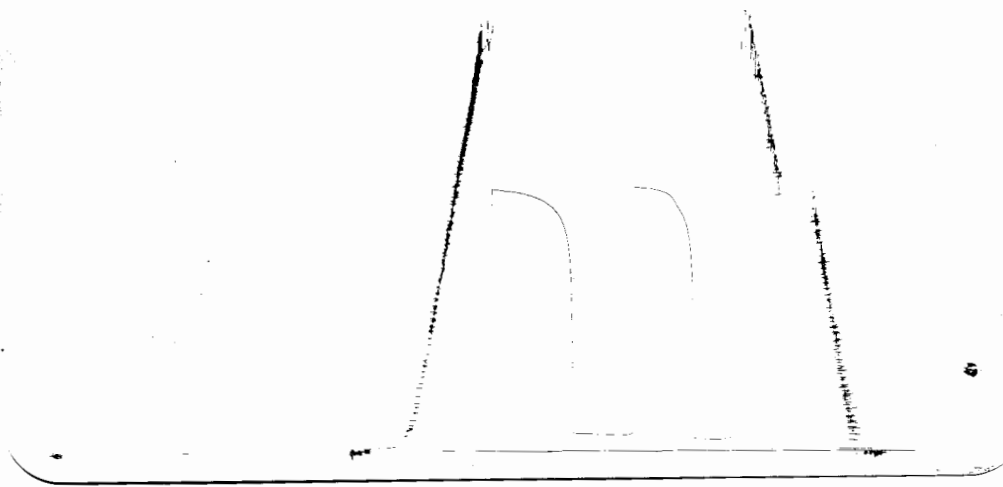
#1 ROBINSON "C"
Formation: TORONTO/LANSING
Job Number: D181

#1 ROBINSON "C"



L.D.
#1 ROBINSON C

DST #2 (DSC #1800)
GUS VDO



This is an actual photograph of recorder chart.

POINT	PRESSURE		Elec. Office Reading	PSI
	Field Reading			
(A) Initial Hydrostatic Mud	1955	1955		PSI
(B) First Initial Flow Pressure.....	23	23		PSI
(C) First Final Flow Pressure	44	44		PSI
(D) Initial Closed-in Pressure	1283	1283		PSI
(E) Second Initial Flow Pressure	45	45		PSI
(F) Second Final Flow Pressure.....	79	79		PSI
(G) Final Closed-in Pressure.....	1264	1264		PSI
(H) Final Hydrostatic Mud	1929	1929		PSI



DIAMOND TESTING
P.O. Box 157
HOISINGTON, KANSAS 67544
(620) 653-7550 • (800) 542-7313
STC 21083.D182

Company L. D. Drilling, Inc. Lease & Well No. Robison "C" No. 1

Elevation 3383KB Formation Lansing/Kansas City "H" - "J" Effective Pay -- Ft. Ticket No. J1772

Date 11-16-05 Sec. 16 Twp. 6S Range 36W County Thomas State Kansas

Test Approved By Kim Shoemaker Diamond Representative John C. Riedl

Formation Test No. 3 Interval Tested from 4,358 ft. to 4,444 ft. Total Depth 4,444 ft.

Packer Depth 4,353 ft. Size 6 3/4 in. Packer Depth -- ft. Size -- in.

Packer Depth 4,358 ft. Size 6 3/4 in. Packer Depth -- ft. Size -- in.

Depth of Selective Zone Set ft.

Top Recorder Depth (Inside) 4,362 ft. Recorder Number 21083 Cap. 5,000 psi

Bottom Recorder Depth (Outside) 4,441 ft. Recorder Number 11017 Cap. 4,000 psi

Below Straddle Recorder Depth ft. Recorder Number Cap. psi

Drilling Contractor L. D. Drilling, Inc. - Rig 1 Drill Collar Length -- ft. I.D. -- in.

Mud Type Chemical Viscosity 55 Weight Pipe Length -- ft. I.D. -- in.

Weight 9.1 Water Loss 11.2 cc. Drill Pipe Length 4,338 ft. I.D. 3 1/2 in.

Chlorides 5,200 P.P.M. Test Tool Length 20 ft. Tool Size 3 1/2 - IF in.

Jars: Make Bowen Serial Number Not Run Anchor Length 86 ft. Size 4 1/2 - FH in.

Did Well Flow? No Reversed Out No Surface Choke Size 1 in. Bottom Choke Size 5/8 in.

Main Hole Size 7 7/8 in. Tool Joint Size 4 1/2 - XH in.

Blow: 1st Open: Weak, 1 1/2 in., blow.

2nd Open: Weak surface blow.

Recovered 5 ft. of drilling mud with some oil specks in tool = .051300 bbls.

Recovered ft. of

Recovered ft. of

Recovered ft. of

Recovered ft. of

Remarks

Time Set Packer(s) 10:12 A.M. P.M. Time Started Off Bottom 12:12 A.M. P.M. Maximum Temperature --

Initial Hydrostatic Pressure (A) 2100 P.S.I.

Initial Flow Period Minutes 30 (B) 72 P.S.I. to (C) 72 P.S.I.

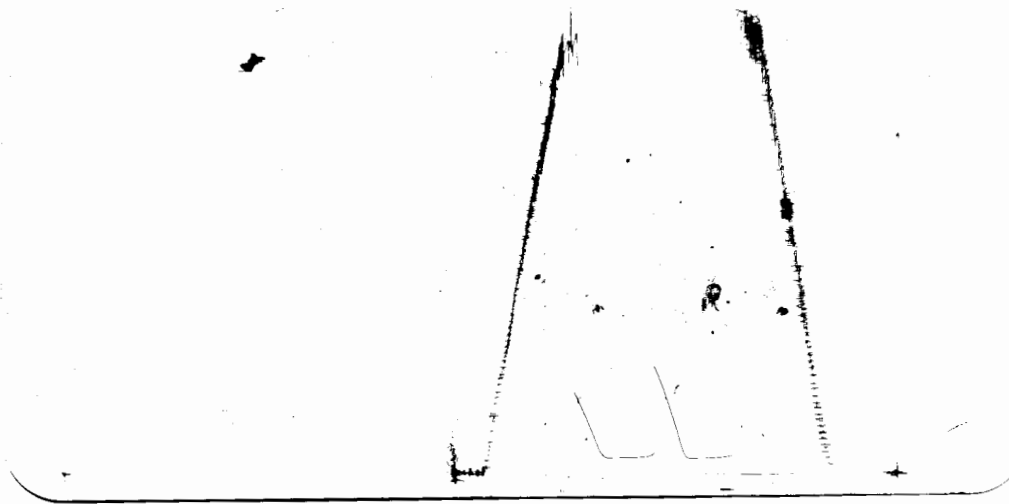
Initial Closed In Period Minutes 30 (D) 588 P.S.I.

Final Flow Period Minutes 30 (E) 74 P.S.I. to (F) 74 P.S.I.

Final Closed In Period Minutes 30 (G) 448 P.S.I.

Final Hydrostatic Pressure (H) 2080 P.S.I.

Q.R.
 BOBENSON
 785 #3
 REC # 1101D
 OUTSIDE
 LOC 4441



This is an actual photograph of recorder chart.

POINT	PRESSURE		PSI
	Field Reading	Elec. Office Reading	
(A) Initial Hydrostatic Mud	2100	2100	PSI
(B) First Initial Flow Pressure	72	72	PSI
(C) First Final Flow Pressure	72	72	PSI
(D) Initial Closed-in Pressure	588	588	PSI
(E) Second Initial Flow Pressure	74	74	PSI
(F) Second Final Flow Pressure	74	74	PSI
(G) Final Closed-in Pressure	448	448	PSI
(H) Final Hydrostatic Mud	2080	2080	PSI



DIAMOND TESTING

P.O. Box 157
HOISINGTON, KANSAS 67544
(620) 653-7550 • (800) 542-7313
STC 21083.D183

Company L. D. Drilling, Inc. Lease & Well No. Robison "C" No. 1
Elevation 3383KB Formation Lansing/Kansas City "K" - "L"/Marmaton Effective Pay --Ft. Ticket No. J1773
Date 11-17-05 Sec. 16 Twp. 6S Range 36W County Thomas State Kansas
Test Approved By Kim Shoemaker Diamond Representative John C. Riedl

Formation Test No. 4 Interval Tested from 4,432 ft. to 4,510 ft. Total Depth 4,510 ft.
Packer Depth 4,427 ft. Size 6 3/4 in. Packer Depth -- ft. Size -- in.
Packer Depth 4,432 ft. Size 6 3/4 in. Packer Depth -- ft. Size -- in.
Depth of Selective Zone Set ft.

Top Recorder Depth (Inside) 4,440 ft. Recorder Number 21083 Cap. 5,000 psi
Bottom Recorder Depth (Outside) 4,507 ft. Recorder Number 11017 Cap. 4,000 psi
Below Straddle Recorder Depth ft. Recorder Number Cap. psi

Drilling Contractor L. D. Drilling, Inc. - Rig 1 Drill Collar Length -- ft. I.D. -- in.
Mud Type Chemical Viscosity 47 Weight Pipe Length -- ft. I.D. -- in.
Weight 9.3 Water Loss 10.0 cc. Drill Pipe Length 4,412 ft. I.D. 3 1/2 in.
Chlorides 5,200 P.P.M. Test Tool Length 20 ft. Tool Size 3 1/2 - IF in.
Jars: Make Bowen Serial Number Not Run Anchor Length 78 ft. Size 4 1/2 - FH in.
Did Well Flow? No Reversed Out No Surface Choke Size 1 in. Bottom Choke Size 5/8 in.
Main Hole Size 7 7/8 in. Tool Joint Size 4 1/2 - XH in.

Blow: 1st Open: Fair, 3 in., blow. No blow back during shut-in.
2nd Open: Weak, 1/2 in., blow. No blow back during shut-in.

Recovered 1 ft. of free oil = .010260 bbls.
Recovered 79 ft. of water cut mud = .810540 bbls. (Grind out: 40%-water; 60%-mud) Chlorides: 28,000 Ppm
Recovered 80 ft. of TOTAL FLUID = .820800 bbls.
Recovered ft. of
Recovered ft. of

Remarks

Time Set Packer(s) 2:30 A.M. Time Started Off Bottom 5:30 A.M. Maximum Temperature 130°
Initial Hydrostatic Pressure (A) 2181 P.S.I.
Initial Flow Period Minutes 30 (B) 23 P.S.I. to (C) 38 P.S.I.
Initial Closed In Period Minutes 45 (D) 1249 P.S.I.
Final Flow Period Minutes 45 (E) 40 P.S.I. to (F) 58 P.S.I.
Final Closed In Period Minutes 60 (G) 1242 P.S.I.
Final Hydrostatic Pressure (H) 2101 P.S.I.

GENERAL INFORMATION

Client Information:

Company: L D DRILLING INC

Contact: L D DAVIS

Phone: Fax: e-mail:

Site Information:

Contact: KIM SHOEMAKER

Phone: Fax: e-mail:

Well Information:

Name: #1 ROBINSON "C"

Operator: L D DRILLING INC

Location-Downhole: DST #4 4432 TO 4510

Location-Surface: S16/6S/36W THOMAS COUNTY

Test Information:

Company: CONVENTIONAL

Representative: JOHN RIEDL

Supervisor: KIM SHOEMAKER

Test Type: CONVENTIONAL

Job Number: D184

Test Unit: 2

Start Date: 2005/11/17

Start Time: 00:50:00

End Date: 2005/11/17

End Time: 07:15:00

Report Date: 2005/11/17

Prepared By: JOHN RIEDL

Remarks:

Qualified By: KIM SHOEMAKER

RECOVERY: 1' FREE OIL

79' WATER CUT MUD (40%WATER 60%MUD)

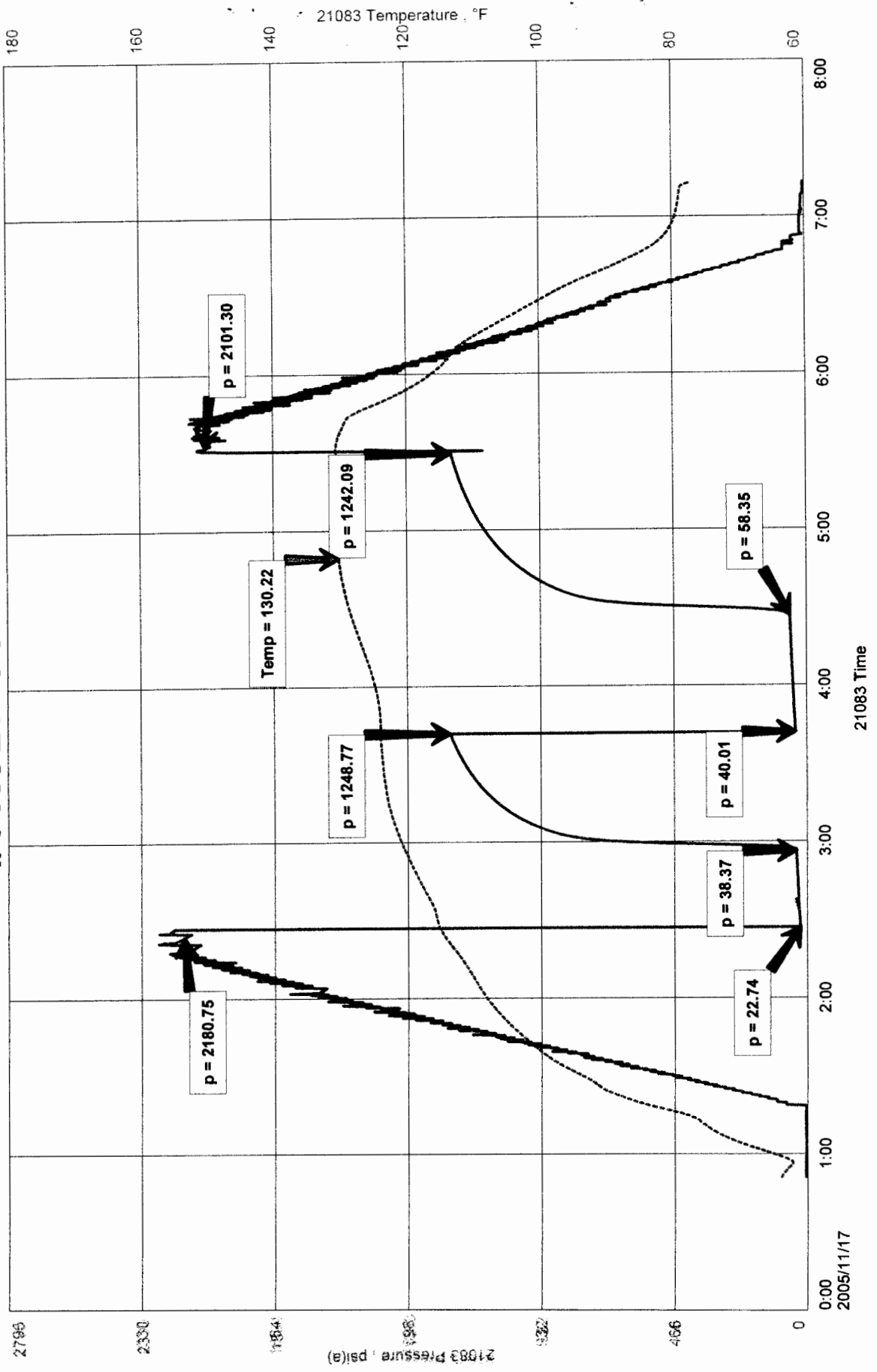
CHLORIDES 28,000Ppm

TOTAL FLUID REC. 80'

#1 ROBINSON "C"
 Formation: LKC "K,L" + MARMATON
 Job Number: D184

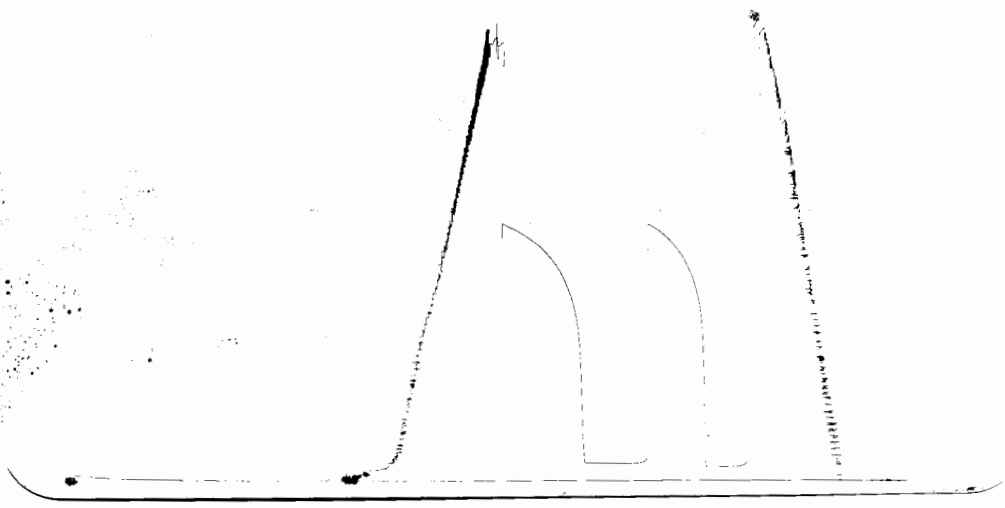
L D DRILLING INC
 DST #1 4432 TO 4510
 Start Test Date: 2005/11/17
 Final Test Date: 2005/11/17

#1 ROBINSON "C"



L.D.
EJ ROBINSON C

DSI # 115 RSC # 0017 OUTSIDE



This is an actual photograph of recorder chart.

POINT	PRESSURE		PSI
	Field Reading	Elec. Office Reading	
(A) Initial Hydrostatic Mud	2181	2181	PSI
(B) First Initial Flow Pressure.....	23	23	PSI
(C) First Final Flow Pressure	38	38	PSI
(D) Initial Closed-in Pressure	1249	1249	PSI
(E) Second Initial Flow Pressure	40	40	PSI
(F) Second Final Flow Pressure.....	58	58	PSI
(G) Final Closed-in Pressure.....	1242	1242	PSI
(H) Final Hydrostatic Mud.....	2101	2101	PSI



DIAMOND TESTING

P.O. Box 157
HOISINGTON, KANSAS 67544
(620) 653-7550 • (800) 542-7313
STC 21008.D184

Company L. D. Drilling, Inc. Lease & Well No. Robison "C" No. 1
Elevation 3383KB Formation Altamont/Pawnee Effective Pay -- Ft. Ticket No. J1774
Date 11-17-05 Sec. 16 Twp. 6S Range 36W County Thomas State Kansas
Test Approved By Kim Shoemaker Diamond Representative John C. Riedl

Formation Test No. 5 Interval Tested from 4,486 ft. to 4,616 ft. Total Depth 4,616 ft.
Packer Depth 4,481 ft. Size 6 3/4 in. Packer Depth -- ft. Size -- in.
Packer Depth 4,486 ft. Size 6 3/4 in. Packer Depth -- ft. Size -- in.
Depth of Selective Zone Set -- ft.

Top Recorder Depth (Inside) 4,494 ft. Recorder Number 21008 Cap. 5,000 psi
Bottom Recorder Depth (Outside) 4,613 ft. Recorder Number 11017 Cap. 4,000 psi
Below Straddle Recorder Depth -- ft. Recorder Number -- Cap. -- psi

Drilling Contractor L. D. Drilling, Inc. - Rig 1 Drill Collar Length -- ft. I.D. -- in.
Mud Type Chemical Viscosity 49 Weight Pipe Length -- ft. I.D. -- in.
Weight 9.3 Water Loss 9.6 cc. Drill Pipe Length 4,466 ft. I.D. 3 1/2 in.
Chlorides 4,000 P.P.M. Test Tool Length 20 ft. Tool Size 3 1/2 - IF in.
Jars: Make Bowen Serial Number Not Run Anchor Length 130 ft. Size 4 1/2 - FH in.
Did Well Flow? No Reversed Out No Surface Choke Size 1 in. Bottom Choke Size 5/8 in.
Main Hole Size 7 7/8 in. Tool Joint Size 4 1/2 - XH in.

Blow: 1st Open: Weak, 1/2 in., blow. Decreasing to a surface blow.
2nd Open: No blow.

Recovered 1 ft. of free oil = .010260 bbls.
Recovered 10 ft. of oil cut mud = .102600 bbls. (10%-oil; 90%-mud)
Recovered 11 ft. of TOTAL FLUID = .112860 bbls.
Recovered -- ft. of --
Recovered -- ft. of --

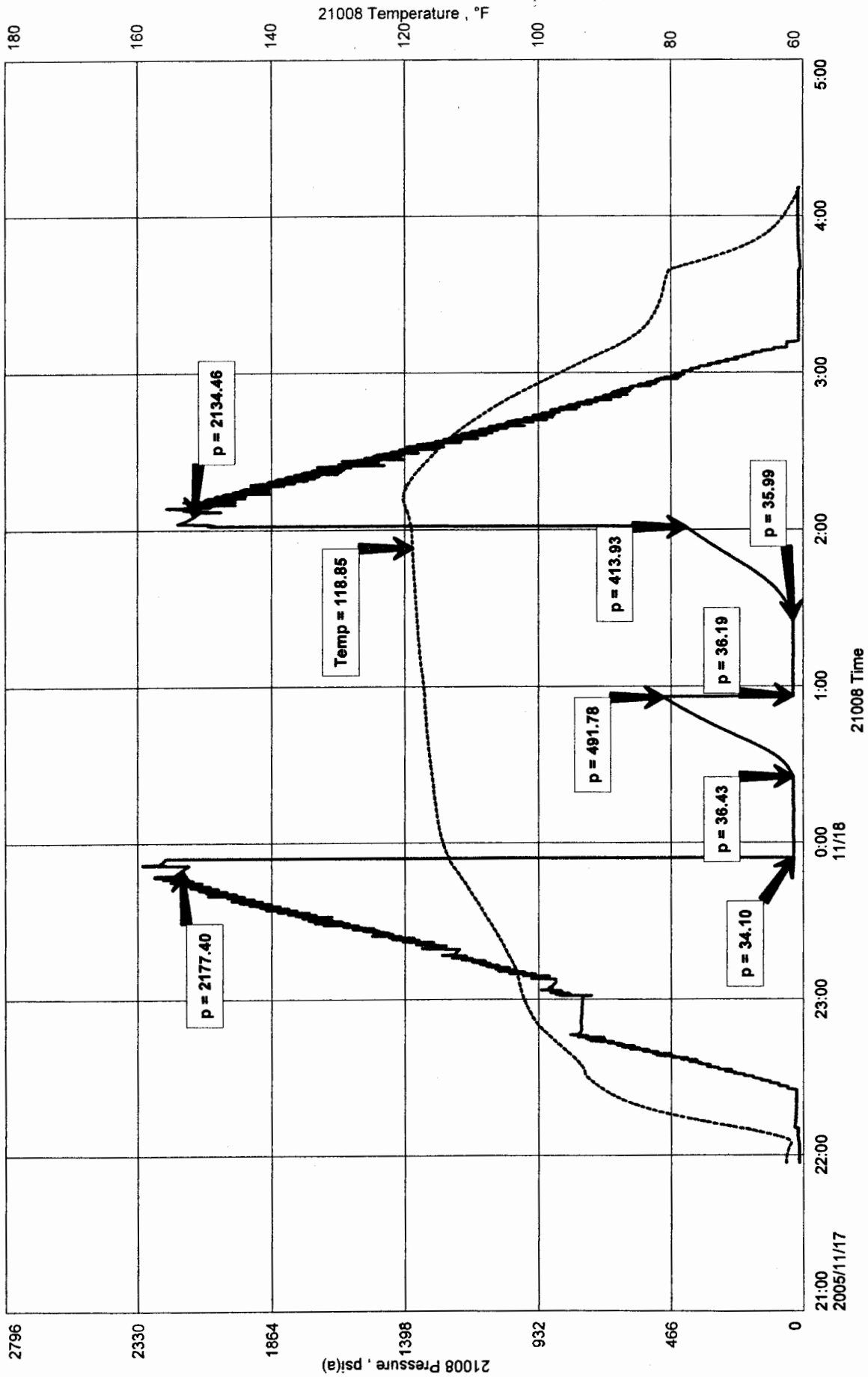
Remarks --

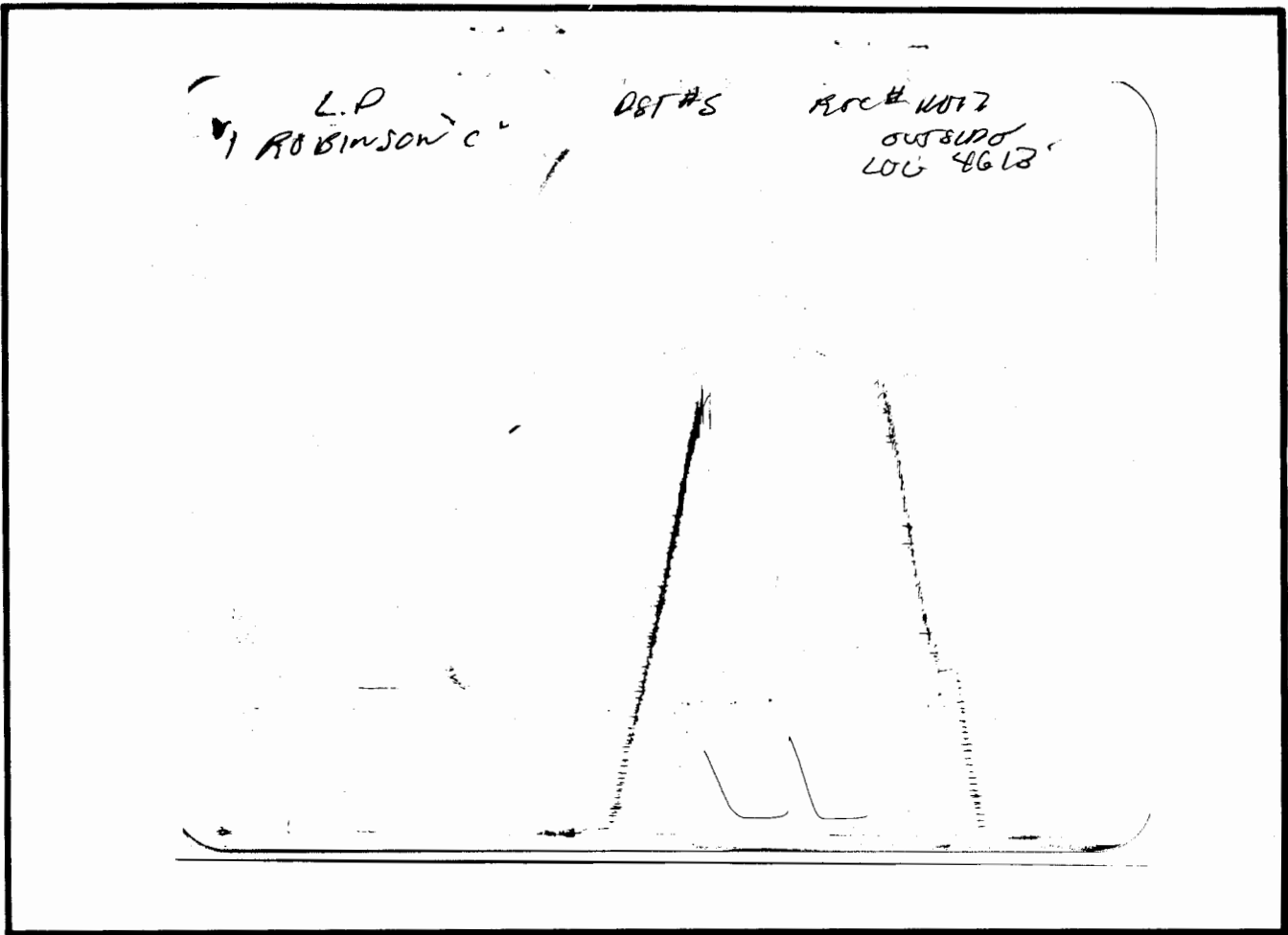
Time Set Packer(s) 11:50 ~~AM.~~ P.M. Time Started Off Bottom 1:50 ~~AM.~~ P.M. Maximum Temperature 119°
Initial Hydrostatic Pressure (A) 2177 P.S.I.
Initial Flow Period Minutes 30 (B) 34 P.S.I. to (C) 36 P.S.I.
Initial Closed In Period Minutes 30 (D) 492 P.S.I.
Final Flow Period Minutes 30 (E) 36 P.S.I. to (F) 36 P.S.I.
Final Closed In Period Minutes 30 (G) 414 P.S.I.
Final Hydrostatic Pressure (H) 2134 P.S.I.

L D DRILLING INC
DST #5 4486-4616
Start Test Date: 2005/11/17
Final Test Date: 2005/11/18

#1 ROBINSON "C"
Formation: ALTAMONT PAWNEE
Job Number: D184

#1 ROBINSON "C"





This is an actual photograph of recorder chart.

POINT	PRESSURE		
	Field Reading	Elec. Office Reading	
(A) Initial Hydrostatic Mud	2177	2177	PSI
(B) First Initial Flow Pressure.....	34	34	PSI
(C) First Final Flow Pressure	36	36	PSI
(D) Initial Closed-in Pressure	492	492	PSI
(E) Second Initial Flow Pressure	36	36	PSI
(F) Second Final Flow Pressure.....	36	36	PSI
(G) Final Closed-in Pressure.....	414	414	PSI
(H) Final Hydrostatic Mud	2134	2134	PSI

GENERAL INFORMATION

Client Information:

Company: L D DRILLING INC

Contact: L D DAVIS

Phone: Fax: e-mail:

Site Information:

Contact: KIM SHOEMAKER

Phone: Fax: e-mail:

Well Information:

Name: #1 ROBINSON "C"

Operator: L D DRILLING INC

Location-Downhole: DST #5 4486-4616

Location-Surface: S16/6S/36W THOMAS COUNTY

Test Information:

Company: DIAMOND TESTING

Representative: JOHN RIEDL

Supervisor: KIM SHOEMAKER

Test Type: CONVENTIONAL

Job Number: D184

Test Unit: 2

Start Date: 2005/11/17

Start Time: 21:55:00

End Date: 2005/11/18

End Time: 04:10:00

Report Date: 2005/11/18

Prepared By: JOHN RIEDL

Remarks:

Qualified By: KIM SHOEMAKER

RECOVERY: 1' FREE OIL
10' OCM (10%OIL 90%MUD)



DIAMOND TESTING
P.O. Box 157
HOISINGTON, KANSAS 67544
(620) 653-7550 • (800) 542-7313
STC 21008.D185

Company L. D. Drilling, Inc. Lease & Well No. Robison "C" No. 1
Elevation 3383KB Formation Johnson Effective Pay -- Ft. Ticket No. J1775
Date 11-18-05 Sec. 16 Twp. 6S Range 36W County Thomas State Kansas
Test Approved By Kim Shoemaker Diamond Representative John C. Riedl

Formation Test No. 6 Interval Tested from 4,714 ft. to 4,749 ft. Total Depth 4,749 ft.
Packer Depth 4,709 ft. Size 6 3/4 in. Packer Depth -- ft. Size -- in.
Packer Depth 4,714 ft. Size 6 3/4 in. Packer Depth -- ft. Size -- in.
Depth of Selective Zone Set ft.

Top Recorder Depth (Inside) 4,717 ft. Recorder Number 21008 Cap. 5,000 psi
Bottom Recorder Depth (Outside) 4,746 ft. Recorder Number 11017 Cap. 4,000 psi
Below Straddle Recorder Depth ft. Recorder Number Cap. psi

Drilling Contractor L. D. Drilling, Inc. - Rig 1 Drill Collar Length -- ft. I.D. -- in.
Mud Type Chemical Viscosity 47 Weight Pipe Length -- ft. I.D. -- in.
Weight 9.3 Water Loss 9.2 cc. Drill Pipe Length 4,694 ft. I.D. 3 1/2 in.
Chlorides 4,400 P.P.M. Test Tool Length 20 ft. Tool Size 3 1/2 - IF in.
Jars: Make Bowen Serial Number Not Run Anchor Length 35 ft. Size 4 1/2 - FH in.
Did Well Flow? No Reversed Out No Surface Choke Size 1 in. Bottom Choke Size 5/8 in.
Main Hole Size 7 7/8 in. Tool Joint Size 4 1/2 - XH in.

Blow: 1st Open: Strong blow. Off bottom of bucket in 3 mins. No blow back during shut-in.
2nd Open: Strong blow. Off bottom of bucket in 6 mins. No blow back during shut-in.

Recovered 300 ft. of mud cut water = 3.078000 bbls.

Recovered 1,600 ft. of water = 16.416000 bbls. (Chlorides: 23,000 Ppm)

Recovered 1,900 ft. of TOTAL FLUID = 19.494000 bbls.

Recovered ft. of

Recovered ft. of

Remarks

Time Set Packer(s) 7:52 ^{XXM.} P.M. Time Started Off Bottom 10:52 ^{XXM.} P.M. Maximum Temperature 146°
Initial Hydrostatic Pressure (A) 2305 P.S.I.
Initial Flow Period Minutes 30 (B) 146 P.S.I. to (C) 443 P.S.I.
Initial Closed In Period Minutes 45 (D) 1056 P.S.I.
Final Flow Period Minutes 45 (E) 488 P.S.I. to (F) 773 P.S.I.
Final Closed In Period Minutes 60 (G) 1060 P.S.I.
Final Hydrostatic Pressure (H) 2282 P.S.I.

GENERAL INFORMATION

Client Information:

Company: L D DRILLING INC

Contact: L D DAVIS

Phone: Fax: e-mail:

Site Information:

Contact: KIM SHOEMAKER

Phone: Fax: e-mail:

Well Information:

Name: #1 ROBINSON "C"

Operator: L D DRILLING INC

Location-Downhole: DST #6 4714 TO 4749

Location-Surface: S16/6S/36W THOMAS COUNTY

Test Information:

Company: DIAMOND TESTING

Representative: JOHN RIEDL

Supervisor: KIM SHOEMAKER

Test Type: CONVENTIONAL Job Number: D185

Test Unit: 2

Start Date: 2005/11/18 Start Time: 17:50:00

End Date: 2005/11/19 End Time: 02:00:00

Report Date: 2005/11/19 Prepared By: JOHN RIEDL

Qualified By: KIM SHOEMAKER

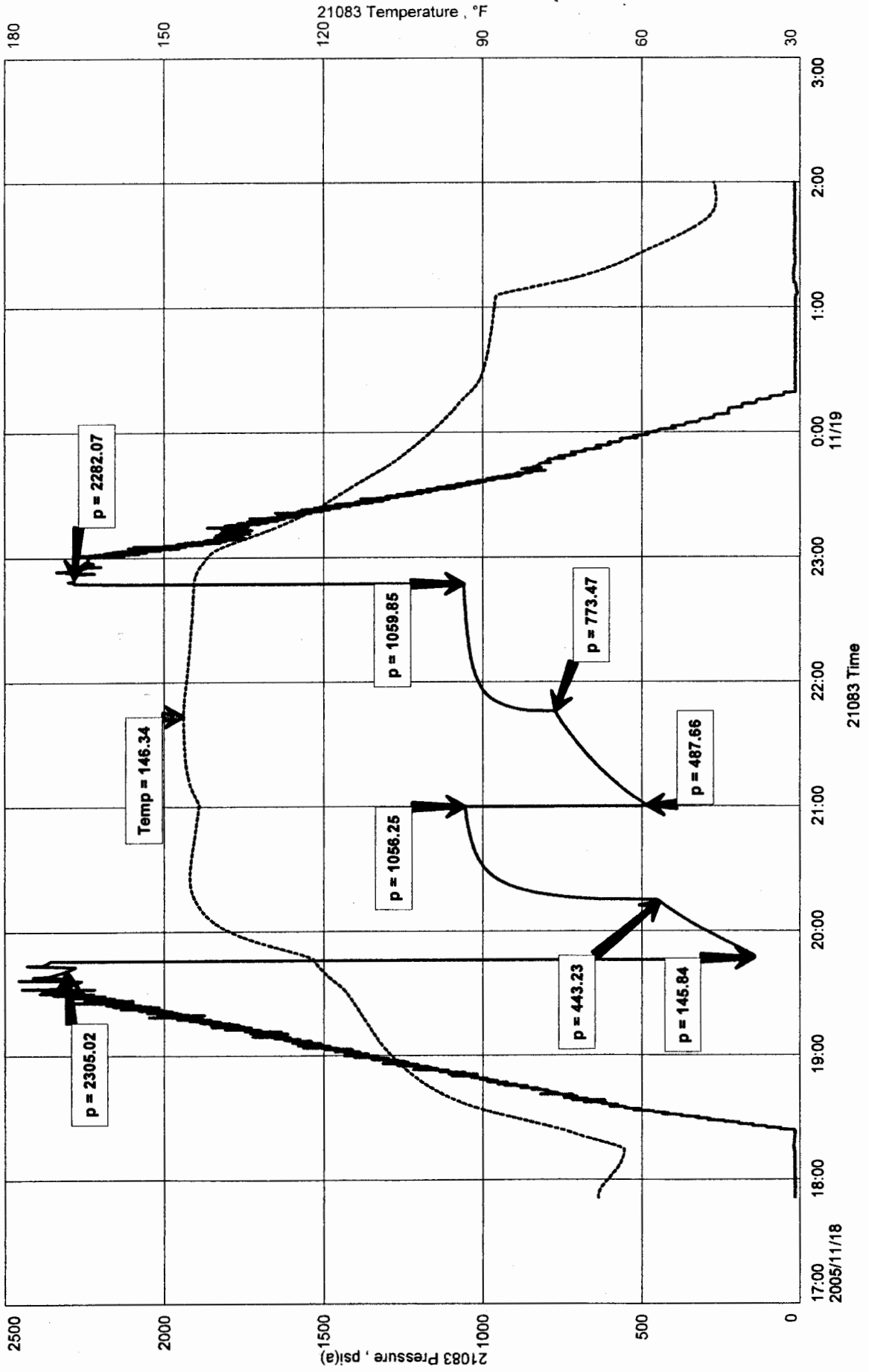
Remarks:

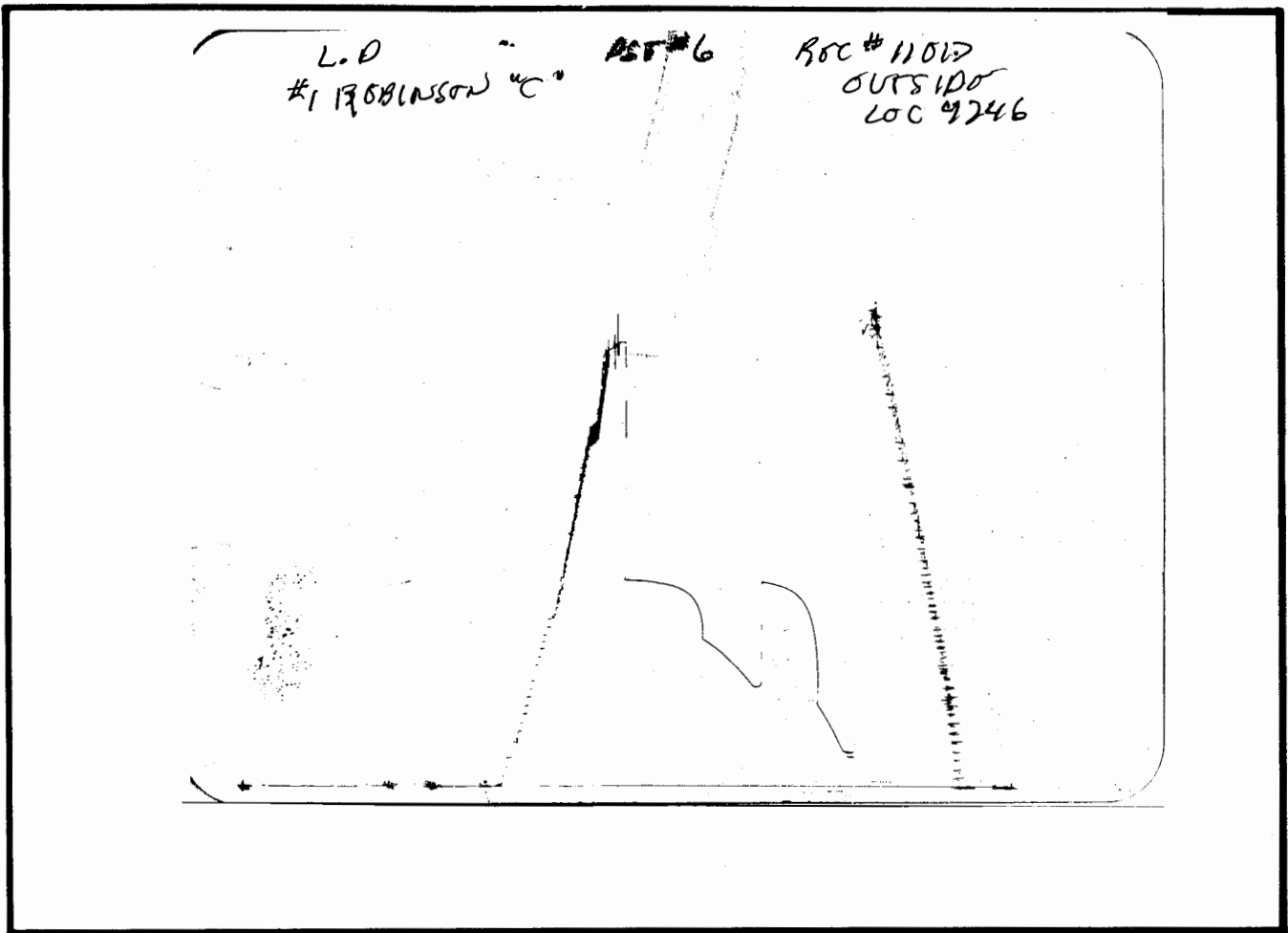
RECOVERY: 300' MUDDY WATER
1600' WATER (CHLORIDES 23,000Ppm)
1900' TOTAL FLUID RECOVERY

#1 ROBINSON "C"
 Formation: JOHNSON
 Job Number: D185

L D DRILLING INC
 DST #6 4714 TO 4749
 Start Test Date: 2005/11/18
 Final Test Date: 2005/11/19

#1 ROBINSON "C"





This is an actual photograph of recorder chart.

POINT	PRESSURE		Elec. Office Reading	PSI
	Field Reading			
(A) Initial Hydrostatic Mud	2305	2305	2305	PSI
(B) First Initial Flow Pressure.....	146	146	146	PSI
(C) First Final Flow Pressure	443	443	443	PSI
(D) Initial Closed-in Pressure	1056	1056	1056	PSI
(E) Second Initial Flow Pressure	488	488	488	PSI
(F) Second Final Flow Pressure.....	773	773	773	PSI
(G) Final Closed-in Pressure.....	1060	1060	1060	PSI
(H) Final Hydrostatic Mud	2282	2282	2282	PSI