

Ind

KANSAS

State Geological Survey
WICHITA, BRANCH

P1

WELL COMPLETION REPORT AND
DRILLER'S LOG

S. 13 T. 7S R. 17 ^{EW}

API No. 15 — 163 — 21,288
County Number

Loc. NE NE SE

County Rooks

Operator
Liberty Enterprises, Inc.

Address
308 West Mill

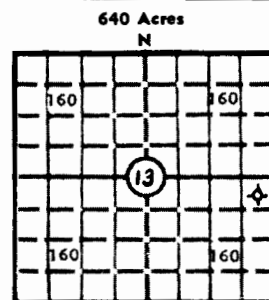
Well No. #1 Lease Name Casad

Footage Location
2310 feet from ~~XX~~ (S) line 330 feet from (E) ~~XX~~ line

Principal Contractor Pioneer Drilling Company, Inc. Geologist Charles G. Comeau

Spud Date 4-24-81 Date Completed 5-1-81 Total Depth 3175' P.B.T.D.

Directional Deviation Oil and/or Gas Purchaser



Locate well correctly
Elev.: Gr. 1747

DF 1750 KB 1752

CASING RECORD

Report of all strings set — surface, intermediate, production, etc.

Purpose of string	Size hole drilled	Size casing set (in O.D.)	Weight lbs/ft.	Setting depth	Type cement	Sacks	Type and percent additives
Surface	12 1/4	8 5/8"		1116'	common	450	2% gel, 3% cc

LINER RECORD

PERFORATION RECORD

Top, ft.	Bottom, ft.	Sacks cement	Shots per ft.	Size & type	Depth interval

Size	Setting depth	Packer set at

ACID, FRACTURE, SHOT, CEMENT SQUEEZE RECORD

Amount and kind of material used	Depth interval treated

INITIAL PRODUCTION

Date of first production	Producing method (flowing, pumping, gas lift, etc.)
RATE OF PRODUCTION PER 24 HOURS	Oil bbls. Gas MCF Water bbls. Gas-oil ratio CFPB
Disposition of gas (vented, used on lease or sold)	Producing interval(s)

INSTRUCTIONS: As provided in KCC Rule 82-2-125, within 90 days after completion of a well, one completed copy of this Drillers Log shall be transmitted to the State Geological Survey of Kansas, 4150 Monroe Street, Wichita, Kansas 67209. Copies of this form are available from the Conservation Division, State Corporation Commission, 245 No. Water, Wichita, Kansas 67202. Phone AC 316-522-2206. If confidential custody is desired, please note Rule 82-2-125. Drillers Logs will be on open file in the Oil and Gas Division, State Geological Survey of Kansas, Lawrence, Kansas 66044.

Operator Liberty Enterprises, Inc. DESIGNATE TYPE OF COMP.: OIL, GAS, DRY HOLE, SWDW, ETC.:

Well No. #1 Lease Name Casad Dry Hole

S 13 T 7 R 17 W

WELL LOG

Show all important zones of porosity and contents thereof; cored intervals, and all drill-stem tests, including depth interval tested, cushion used, time tool open, flowing and shut-in pressures, and recoveries.

SHOW GEOLOGICAL MARKERS, LOGS RUN, OR OTHER DESCRIPTIVE INFORMATION.

FORMATION DESCRIPTION, CONTENTS, ETC. TOP BOTTOM NAME DEPTH

Geological Report Enclosed

USE ADDITIONAL SHEETS, IF NECESSARY, TO COMPLETE WELL RECORD.

Date Received Charles G. Comeau Signature Petroleum Geologist Title June 10, 1981 Date