

3-7-20W
*
JMA

STATE CORPORATION COMMISSION OF KANSAS
OIL & GAS CONSERVATION DIVISION

WELL COMPLETION OR RECOMPLETION FORM
ACO-1 WELL HISTORY

DESCRIPTION OF WELL AND LEASE

Operator: license #
name Diamond Shamrock Exploration Co.
address P.O. Box 400
City State/Zip Amarillo, Texas 79188-0001

Operator Contact Person Jay Voorhis
Phone 806/378-3851

Contractor: license # 5418
name Allen Drilling Company
Box 1389, Great Bend, KS 67530

Wellsite Geologist Hal Clark
Phone 316-264-7464

PURCHASER Koch Oil Co.

Designate Type of Completion
 New Well Re-Entry Workover

- Oil SWD Temp Abd
- Gas Inj Delayed Comp.
- Dry Other (Core, Water Supply etc.)

If VO: old well info as follows:
Operator
Well Name
Comp. Date Old Total Depth

WELL HISTORY

Drilling Method: Mud Rotary Air Rotary Cable

10-31-84 11-6-84 1-08-85
Spud Date Date Reached TD Completion Date

3652 3615
Total Depth PBD

Amount of Surface Pipe Set and Cemented at 307 feet

Multiple Stage Cementing Collar Used? Yes No

If Yes, Show Depth Set 1738 feet

If alternate 2 completion, cement circulated
from 307 feet depth to Surf. w/ 200 SX cmt

API NO. 15-163-22,528

County Rooks

NW SW SE Sec 3 Twp 7 Rge 20
(location)

990 Ft North from Southeast Corner of Section
2310 Ft West from Southeast Corner of Section
(Note: locate well in section plat below)

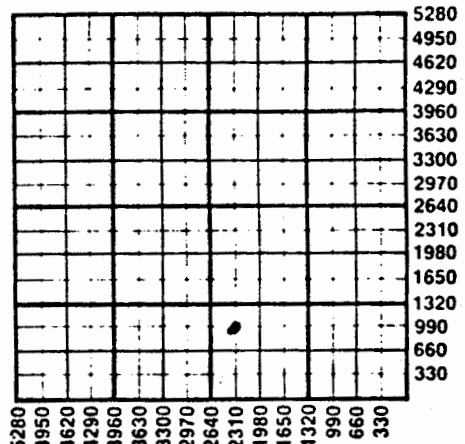
Lease Name Sandra K. Gottschalk Well# 2-3

Field Name Probasco

Producing Formation Lansing/Kansas City

Elevation: Ground 2171' KB 2176'

Section Plat



WATER SUPPLY INFORMATION

Source of Water:

Division of Water Resources Permit #

Groundwater Ft North From Southeast Corner and
(Well) Ft West From Southeast Corner of

Sec Twp Rge East West

Surface Water Ft North From Southeast Corner and
(Stream, Pond etc.) Ft West From Southeast Corner

Sec Twp Rge East West

Other (explain) (purchased from city, R.W.D.#)

Disposition of Produced Water: Disposal Repressuring

Docket # CD-28,317
C-21,754

INSTRUCTIONS: This form shall be completed in duplicate and filed with the Kansas Corporation Commission, 200 Colorado Derby Building, Wichita, Kansas 67202, within 90 days after completion or recompletion of any well. Rules 82-3-130 and 82-3-107 apply.

Information on side two of this form will be held confidential for a period of 12 months if requested in writing and submitted with the form. See rule 82-3-107 for confidentiality in excess of 12 months.

One copy of all wireline logs and drillers time log shall be attached with this form. Submit CP-4 form with all plugged wells. Submit CP-111 form with all temporarily abandoned wells.

WELL LOG

INSTRUCTIONS: Show important tops and base of formations penetrated. Detail all cores. Report all drill stem tests giving interval tested, time tool open and closed, flowing and shut-in pressures, whether shut-in pressure reached static level, hydrostatic pressures, bottom hole temperature, fluid recovery, and flow rates if gas to surface during test. Attach extra sheet if more space is needed. Attach copy of log.

Drill Stem Tests Taken Yes No
 Samples Sent to Geological Survey Yes No
 Cores Taken Yes No

Formation Description
 Log Sample

DST#1 - 3386-3425 - 30/90/30/90, 1st open Fair blow built to 10 1/2" into becket throughout. FP 49/89, SIP 929, 2nd open-fair blow built to 6" into bucket. FP 109/128, SIP 929, Rec. 20' clean oil, 90' gas & oil cut muddy water, & 120' muddy water. Sampler rec. 200 cc oil & 1600 cc water @100 psi.
 DST#2 - 3443-3475 - 30/90/30/90. 1st open-weak blow increase to 3" into bucket. FP 39/39, SIP 948. 2nd open - same as 1st. FP 59/59, SIP 899. Rec. 20' clean oil and 60' oil cut mud.

Name	Top	Bottom
Anhydrite	1733	
Heebner	3358	
Toronto	3380	
Lansing	3386	
B/Kansas City	3599	
Arbuckle	3640	

TUBING RECORD size 2 3/8" set at 3597 packer at ---		Liner Run <input type="checkbox"/> Yes <input checked="" type="checkbox"/> No	
Date of First Production 12-01-84	Producing method <input type="checkbox"/> flowing <input checked="" type="checkbox"/> pumping <input type="checkbox"/> gas lift <input type="checkbox"/> Other (explain)		
Estimated Production Per 24 Hours	Oil 57 Bbls	Gas --- MCF	Water 49 Bbls
			Gas-Oil Ratio --- CFPB
			Gravity

Disposition of gas: vented sold used on lease

METHOD OF COMPLETION open hole perforation other (specify)

PRODUCTION INTERVAL 3450-3588

Dually Completed. Commingled

CASING RECORD <input type="checkbox"/> new <input checked="" type="checkbox"/> used							
Report all strings set - conductor, surface, intermediate, production, etc.							
Purpose of string	size hole drilled	size casing set (in O.D.)	weight lbs/ft.	setting depth	type of cement	# sacks used	type and percent additives
Surface Casing	12-1/4"	8-5/8"	24#	307'	Class "A"	200 sks	2% gel
Production Csg	7-7/8"	4-1/2"	9.5#	3640'	Light	500 sks	

PERFORATION RECORD		Acid, Fracture, Shot, Cement Squeeze Record	
shots per foot	specify footage of each interval perforated	(amount and kind of material used)	Depth
4	3584-88;3562-66	2000 gals 15% Emuls Acid & 3000	3450-3588
4	3546-52;3488-92	gals 20% Non-Emuls Acid	
4	3478082;3470-75		
4	3450-53		

Lease Name Sandra K. Gotschalk
 Location 990' FSL & 2310' FEL
 Sec. Blk. Sur.
 Sec. 3 Twp. 7S Rge. 20 West
 County, State Rooks County, Kansas
 Dia. Shamrock WI 100%
 Init. Potential X OIL GAS
57 BOPD, 49 BWPD, MCFD, GOR, SITP, SIBHP, SICP

Well No. 2-3 Spud Date 10-31-80
 Rig Released 11-6-84
 Date Completed 1-07-85
 Field Probasco Form Lanning - KC
 Date 1st Prod.
 Connected PL KOCH OIL
 Rate
 Purchaser KOCH OIL

Surface Casing
8 5/8 "
300.19, K55, 24 #
 Set @ 307'
 W/ 200 sks Class A
 Tailed in w/ sks Class

GL=2171' KB=2176'

Production Casing
4 1/2 "
3642, K55, 9.5 #
 DV tool @ 1738' #
500 sx, Lite #
 Set @ 3640' KB
 W/ 200 sks Class Shurfill
 Cement Top @ 2520'
 Determined by CBL

2nd Stage
 1st Stage

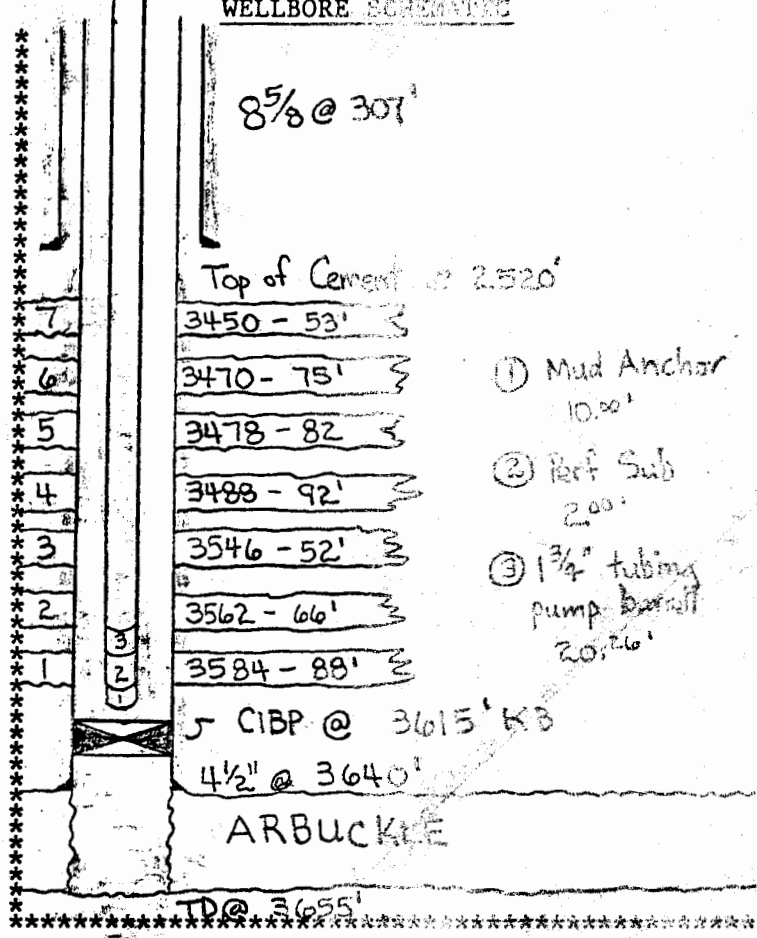
Prod Liner CIBP set @ 3615'
 Top Liner @
 Bottom Liner @
 Cemented w/ sks Class
 Cement Top @
 Determined by

Perforation Record

1.	3584	'to 3588	'	4	SPF
2.	3562	'to 3566	'	4	SPF
3.	3546	'to 3552	'	4	SPF
4.	3488	'to 3492	'	4	SPF
5.	3478	'to 3482	'	4	SPF
6.	3470	'to 3475	'	4	SPF
7.	3450	'to 3453	'	4	SPF

Tubing Record
2 3/8" K55, 47 #, 112 ft. Ft.
 Tubing Set @ 3597' KB Ft.
 Packer Model set @
 Perf Sub set @ 3595

WELLBORE SCHEMATIC



ACID JOB
 ①, ②, ③ 2000 gallons 15% Emuls Acid w/ 75 balls
 ④, ⑤, ⑥, ⑦ 3000 gallons 20% Non Emuls Acid w/ 75 balls

MAR 2 1985

RECEIVED
 STATE CORPORATION COMMISSION
 FEB 28 1985
 CONSERVATION DIVISION
 Wichita, Kansas
 State Geological Survey
 WICHITA BRANCH

Prepared by Jay Voorhis
 Date 11-26-84

Oil Gravity = 33° API @ 51°F