

30-8-15W

KANSAS DRILLERS LOG

State Geological Survey

API No. 15 — 141 — 20,016 WICHITA, BRANCH
County Number

S. 30 T. 8S R. 15 ^W_W

Loc. SE SW NW

County Osborne

Operator Petroleum Management, Inc.

Address 1515 Vickers KSB&T Bldg. Wichita, Kansas 67202

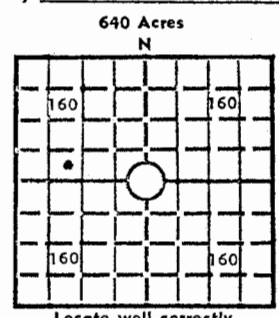
Well No. #1 Lease Name McReynolds

Footage Location 2310' North 990' West
feet from (N) (S) line feet from (E) (W) line

Principal Contractor Red Tiger Drilling Company Geologist W. H. Petersen

Spud Date 7-18-72 Total Depth 3455 P.B.T.D. 3432'

Date Completed Abandoned 8-16-72 to be plugged Oil Purchaser None



Locate well correctly
 Elev.: Gr. 1973'
 DF 1975' KB 1978'

CASING RECORD

Report of all strings set — surface, intermediate, production, etc.

Purpose of string	Size hole drilled	Size casing set (in O.D.)	Weight lbs/ft.	Setting depth	Type cement	Sacks	Type and percent additives
Surface Csg	12-1/4"	8-5/8"	24#	240'	Common	150	3% Calcium Chloride
Production Csg	7-7/8"	5-1/2"	14#	3452'	Scavenger	50	
					Pozmix	150	Salt Saturated

LINER RECORD

PERFORATION RECORD

Top, ft.	Bottom, ft.	Sacks cement	Shots per ft.	Size & type	Depth interval
			2 shots/1 ft	D.P. Jets	3366-70
TUBING RECORD			2 shots/1 ft	D.P. Jets	3322-26
			4 shots/2 ft	Torpedo Jets	
Size	Setting depth	Packer set at	2 shots/1 ft	D.P. Jets	2908-12
			2 shots/1 ft	D.P. Jets	2958-60

ACID, FRACTURE, SHOT, CEMENT SQUEEZE RECORD 2 shots/1 ft- D.P. Jets - 2935-39'

Amount and kind of material used	Depth interval treated
1750 gallon 7 1/2% MCA NONE- Communicate Up.	2908-12 2935-39
250 gallon 7 1/2% MCA	2958-60
250 gallon 7 1/2% MCA	3014-18
NONE	3322-26
300 gallon 15% MCA & 250 gallon MOD 303	3366-70

INITIAL PRODUCTION

Date of first production <u>NONE</u>	Producing method (flowing, pumping, gas lift, etc.)			
RATE OF PRODUCTION PER 24 HOURS	Oil bbls.	Gas MCF	Water bbls.	Gas-oil ratio CFPB
Disposition of gas (vented, used on lease or sold)			Producing interval (s)	

INSTRUCTIONS: As provided in KCC Rule 82-2-125, within 90 days after completion of a well, one completed copy of this Drillers Log shall be transmitted to the State Geological Survey of Kansas, 4150 Monroe Street, Wichita, Kansas 67209. Copies of this form are available from the Conservation Division, State Corporation Commission, 3830 So. Meridian (P.O. Box 17027), Wichita, Kansas 66217. Phone AC 316-522-2206. If confidential custody is desired, please note Rule 82-2-125. Drillers Logs will be on open file in the Oil and Gas Division, State Geological Survey of Kansas, Lawrence, Kansas 66044.

Operator Petroleum Management, Inc.

DESIGNATE TYPE OF COMP.: OIL
DRY HOLE, SWDW, ETC.:

Well No. #1 Lease Name McReynolds

Dry Hole

s 30 T 8S R 15 E W Osborne

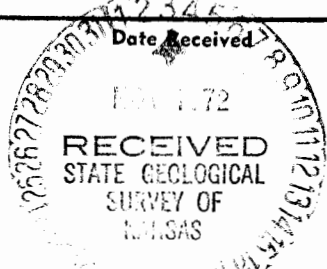
WELL LOG

Show all important zones of porosity and contents thereof; cored intervals, and all drill-stem tests, including depth interval tested, cushion used, time tool open, flowing and shut-in pressures, and recoveries.

SHOW GEOLOGICAL MARKERS, LOGS RUN, OR OTHER DESCRIPTIVE INFORMATION.

FORMATION DESCRIPTION, CONTENTS, ETC.	TOP	BOTTOM	NAME	DEPTH
Shale	0	815	Base Fort Hays	106'
Sand	815	940	Greenhorn	406
Shale	940	1251	Graneros	460
Anhydrite	1251	1287	Dakota	497
Shale	1287	1940	Cheyenne	808
Shale & Lime	1940	2160	Stone Corral	1247
Lime	2160	2450	Base Stone Corral	1281
Lime & Shale	2450	2755	Fort Riley	2034
Lime	2755	3455	Base Florence	2085
			Wreford	2148
			Neva	2332
			Red Eagle	2414
			Tarkio Lime	2751
			Topeka	2905
			Deer Creek	2957
			Lecompton	3024
			Oread	3068
			Heebner	3132
			Toronto	3155
			Lansing	3175
			Base Kansas City	3444
			R.T.D.	3455
DRILL STEM TEST DATA				
DST #1 Topeka 2922-47'				
Op 30 Weak blow at first then strong blow. Closed 45.				
Op 30 Closed 45. Recovered 380' gassy mud with spots of oil and 120' muddy water. IFP 1013 FFP 1013				
DST #2 Deer Creek 2956-3007'				
Op 30 SI 45 Op 30 SI 45 Strong blow throughout. Recovered 1400' water. IFP 1363 FFP 1326				
DST #3 Oread 3064-3080'				
Op 30 SI 45 Op 30 SI 45 Weak blow throughout. Recovered 60' mud. IFP 1280 FFP 1252				
DST #4 Toronto & Lansing Kansas City 3139-3196'				
Op 30 SI 45 Op 25 SI 30 Weak blow for 30 minutes, then died. Recovered 20' mud. IFP 366 FFP 137				
DST #5 3201-3248'				
Op 30 SI 45 Op 30 SI 45 Very weak blow for 30 minutes, then died. Recovered 20' mud. IFP 366 FFP 137				
DST #6 3275-3287'				
Op 30 SI 45 Op 30 SI 45 Very weak blow for 20 minutes, then died. Recovered 30' mud. IFP 1050 FFP 1023				

USE ADDITIONAL SHEETS, IF NECESSARY, TO COMPLETE WELL RECORD.



Dale Silcott
 Dale Silcott Signature
 Vice President Title
 October 26, 1972 Date