

State Geological Survey
WICHITA, BRANCH

KANSAS DRILLERS LOG

S. 29 T. 8 R. 17 ^{EX}_W
 Loc. SE NW SE
 County Rooks

API No. 15 — 163 — 20,415
County Number

Operator
Black Pet., Inc.

Address
545 O. W. Garvey Bldg.

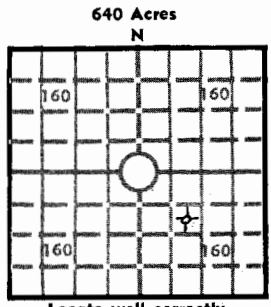
Well No. #1 Lease Name Stamper "F"

Footage Location
990 feet from (N) (S) line 990 feet from (E) (W) line

Principal Contractor Shields Drilling Co. Geologist Richard K. Grant

Spud Date Feb. 3, 1972 Total Depth 3430 P.B.T.D.

Date Completed Feb. 10, 1972 Oil Purchaser None



Elev.: Gr. 1970
 DF 1972 KB 1975

CASING RECORD

Report of all strings set — surface, intermediate, production, etc.

Purpose of string	Size hole drilled	Size casing set (in O.D.)	Weight lbs/ft.	Setting depth	Type cement	Sacks	Type and percent additives
Surface	12-1/4"	8-5/8"	28#	263	50/50 Pozmix	175	3% Cal. Chloride

LINER RECORD

PERFORATION RECORD

Top, ft.	Bottom, ft.	Sacks cement	Shots per ft.	Size & type	Depth interval

TUBING RECORD

Size	Setting depth	Packer set at

ACID, FRACTURE, SHOT, CEMENT SQUEEZE RECORD

Amount and kind of material used	Depth interval treated

INITIAL PRODUCTION

Date of first production	Producing method (flowing, pumping, gas lift, etc.)				
RATE OF PRODUCTION PER 24 HOURS	Oil	Gas	Water	Gas-oil ratio	
	bbls.	MCF	bbls.	CFPB	
Disposition of gas (vented, used on lease or sold)			Producing interval (s)		

INSTRUCTIONS: As provided in KCC Rule 82-2-125, within 90 days after completion of a well, one completed copy of this Drillers Log shall be transmitted to the State Geological Survey of Kansas, 4150 Monroe Street, Wichita, Kansas 67209. Copies of this form are available from the Conservation Division, State Corporation Commission, 3830 So. Meridian (P.O. Box 17027), Wichita, Kansas 66217. Phone AC 316-522-2206. If confidential custody is desired, please note Rule 82-2-125. Drillers Logs will be on open file in the Oil and Gas Division, State Geological Survey of Kansas, Lawrence, Kansas 66044.

Operator Thomas E. Black, d/b/a
BLACK PETROLEUM COMPANY

DESIGNATE TYPE OF COMP.: OIL, GAS,
DRY HOLE, SWDW, ETC.:
Dry hole

Well No. 1 Lease Name Stamper "F"

S29 T 8 R 17E Rooks County, Kansas

WELL LOG

Show all important zones of porosity and contents thereof; cored intervals, and all drill-stem tests, including depth interval tested, cushion used, time tool open, flowing and shut-in pressures, and recoveries.

SHOW GEOLOGICAL MARKERS, LOGS RUN, OR OTHER DESCRIPTIVE INFORMATION.

FORMATION DESCRIPTION, CONTENTS, ETC.	TOP	BOTTOM	NAME	DEPTH
<u>DRILLER'S LOG</u>				
Clay & Shale		215		
Shale		270		
Shale & Sand		850		
Redbed		1195		
Shale		1297		
Anhydrite		1338		
Shale		1610		
Shale & Lime		2785		
Lime		3036		
Lime & Shale		3116		
Lime		3430	RTD	
<u>ELECTRIC LOG TOPS</u>				
Anhy	1296	+679	Electra Inc.	
B Anhy	1337	+638	Radiation Accurlog	
Top	2875	-900		
Heeb	3087	-1112		
Tor	3106	-1131		
Lans	3127	-1152		
BKC	3360	-1385		
Arb CH	3401	-1426		
Arb Col	3408	-1433		
LTD & RTD	3430	-1455		
DST #1: 3220-30/1', 55 MW, BHP 400-400#/30", FP 24-48#.				

USE ADDITIONAL SHEETS, IF NECESSARY, TO COMPLETE WELL RECORD.



Thomas E. Black
Signature

Owner _____
Title _____

October 24, 1973
Date

SEP 8 1972

Shields

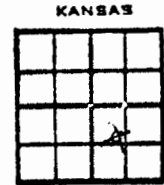
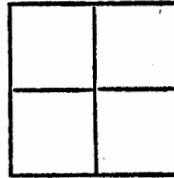
WELL LOG

29-8-17W
App SE NW SE
Russell, Kansas ✓

API # 15-163-20,415

Operator: Black Petroleum, Inc.
Well: Stamper "F" #1
Commenced: February 3, 1972
Completed: February 10, 1972
Contractor: Shields Drilling Co., Inc.

Well Description: Approx. SE NW SE
Sec. 29-8S-17W
Rooks Co., Kansas



Elevation: 1975' KB

Treatment:

Production: D & A
ark

Tops:

CASING RECORD

Size	Run	Pulled
8 5/8"	263'	Cmtd. w/175 sax

..... Figures Indicate Bottom of Formations

Clay & Shale	215'
Shale	270'
Shale & Sand	850'
Redbed	1,195'
Shale	1,297'
Anhydrite	1,338'
Shale	1,610'
Shale & Lime	2,785'
Lime	3,036'
Lime & Shale	3,116'
Lime	3,430' RTD

LOG TOPS:

Anhydrite	1296
B "	1337
Topeka	2875
Heebner	3087
Toronto	3106
Lansing	3127
BKC	3360
Arbuckle CH	3401
" Dol	3408

DST (1) 3220-30

