

KANSAS DRILLERS LOG

S. 34 T.8S R.23 ^EW

API No. 15 — 065 — 20,906
County Number

Loc. SE NE NE

County Graham

Operator
The Maurice L. Brown Company & I. Wayne Woolsey

Address
1500 Vickers-KSB&T Building, Wichita, KS 67202

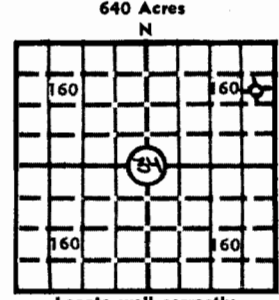
Well No. 2 Lease Name Cassel

Footage Location
990 feet from (N) ~~3/4~~ line 330 feet from (E) ~~0.00~~ line

Principal Contractor Geologist
Abercrombie Drlg., Inc. Mikeal K. Maune

Spud Date Total Depth P.B.T.D.
2-26-77 3822

Date Completed Oil Purchaser
3-8-77



Locate well correctly
Elev.: Gr. 2240

DF. KB 2248

CASING RECORD

Report of all strings set — surface, intermediate, production, etc.

Purpose of string	Size hole drilled	Size casing set (in O.D.)	Weight lbs/ft.	Setting depth	Type cement	Sacks	Type and percent additives
Surface	12 1/4"	8 5/8	24#	253	HLC	200	3% CC

LINER RECORD

PERFORATION RECORD

Top, ft.	Bottom, ft.	Sacks cement	Shots per ft.	Size & type	Depth interval

TUBING RECORD

Size	Setting depth	Packer set at

ACID, FRACTURE, SHOT, CEMENT SQUEEZE RECORD

Amount and kind of material used	Depth interval treated

INITIAL PRODUCTION

Date of first production		Producing method (flowing, pumping, gas lift, etc.)			
RATE OF PRODUCTION PER 24 HOURS	Oil	Gas	Water	Gas-oil ratio	
	bbis.	MCF	bbis.	CFPB	
Disposition of gas (vented, used on lease or sold)			Producing interval (s)		

INSTRUCTIONS: As provided in KCC Rule 82-2-125, within 90 days after completion of a well, one completed copy of this Drillers Log shall be transmitted to the State Geological Survey of Kansas, 4150 Monroe Street, Wichita, Kansas 67209. Copies of this form are available from the Conservation Division, State Corporation Commission, 3830 So. Meridian (P.O. Box 17027), Wichita, Kansas 66217. Phone AC 316-522-2206. If confidential custody is desired, please note Rule 82-2-125. Drillers Logs will be on open file in the Oil and Gas Division, State Geological Survey of Kansas, Lawrence, Kansas 66044.

Operator
The Maurice L. Brown Company & I. Wayne Woolsey

DESIGNATE TYPE OF COMP.: OIL, GAS,
DRY HOLE, SWDW, ETC.:

Well No. 2 Lease Name Cassel Dry Hole

S 34 T 8S R 23 E W Graham County

WELL LOG

Show all important zones of porosity and contents thereof; cored intervals, and all drill-stem tests, including depth interval tested, cushion used, time tool open, flowing and shut-in pressures, and recoveries.

SHOW GEOLOGICAL MARKERS, LOGS RUN,
OR OTHER DESCRIPTIVE INFORMATION.

FORMATION DESCRIPTION, CONTENTS, ETC.	TOP	BOTTOM	NAME	DEPTH

USE ADDITIONAL SHEETS, IF NECESSARY, TO COMPLETE WELL RECORD.

Date Received

Charles G. Smith
Signature

Geologist

March 17, 1977

Date

55559

The Maurice L. Brown Company &
I. Wayne Woolsey

#2 Cassel

34-8S-23W
40' W SE NE NE

Contr. Abercrombie Drilling, Inc. Graham County

Elev. 2248' KB Comm. 2-26-77 Comp. 3-8-77 IP Dry & Abandoned

Casing: 8 5/8" 253'/200 sx

<u>Log Tops</u>	<u>Depth</u>	<u>Datum</u>
Stone Corral	1911	+ 337
Heebner	3533	-1285
Lansing	3575	-1327
BKC	3791	-1543
Total Depth	3822	-1574

DST #1 3625-3652'
60"-60"-60"-90"
Rec. 120' TM w/specks oil
IFP 42-52#
ISIP 896
FFP 84-84#
FSIP 886#

DST #5 3746-3772'
45"-45"-60"-90"
Rec. 20' DM
IFP 21-21#
ISIP 42#
FFP 21-21#
FSIP 42#

DST #2 3678-3717
45"-45"-60"-90"
Rec. 2' DM
IFP 52-52#
ISIP 52#
FFP 52-52#
FSIP 52#

DST #3 3711-3732'
60"-60"-60"-90"
Rec. 30' SOCM
IFP 52-52#
ISIP 147#
FFP 73-73#
FSIP 220#

DST #4 3729-3752'
60"-60"-60"-90"
Rec. 30' DM w/few specks oil
IFP 31-31#
ISIP 31#
FFP 31-31#
FSIP 31#

State Geological Survey
WICHITA, BRANCH

15-065-20906
34-8-23W

CONTRACTOR'S WELL LOG

OPERATOR: The Maurice L. Brown Co.
 CONTRACTOR: Abercrombie Drilling, Inc.
 WELL NAME: CASSEL #2
 LOCATION: SE NE NE, Section 34-8S-23W
 Graham County, Kansas
 SPUD DATE: 2-26-77
 COMPLETION DATE: 3-08-77

0	50	Clay, Sand & Rock
50	700	Shale
700	1733	Shale & Sand
1733	1906	Shale
1906	1945	Anhydrite
1945	2870	Shale
2870	3053	Lime & Shale
3053	3186	Lime
3186	3305	Shale & Lime
3305	3440	Lime & Shale
3440	3566	Lime
3566	3625	Lime & Shale
3625	3770	Lime
3770	3808	Lime & Shale
3808	3820	Lime
	3820	Rotary Total Depth

Drilled 255' of 12 $\frac{1}{4}$ " hole. Ran 243.03' of 8 5/8" new 24# casing, set at 253.03' K.B.
 Cemented with 200 sx. of Halliburton Lite Cement, 3% Ca. Cl. Cement did circulate. Plug
 s down at 8:45 p.m. 2-26-77. All Collars welded and strapped straight hole at 255' - 34 $^{\circ}$.

T.D. 3820', Set 1st plug at 850' with 70 sx., 2nd plug at 250' with 20 sx., 3rd plug 40'
 solid bridge with 10 sx. Cemented with 50/50 posmix, 6% gel. Plug was down at 1:00 a.m.
 2-08-77. State Plugger - Gilbert Balthazor.

SAMPLE TOPS:

Anhydrite 1906' (+342)
 B/Anhydrite 1945' (+303)