

TRILOBITE TESTING INC.

P.O. Box 1733 • Hays, Kansas 67601

RECEIVED
FEB 07 2011

Test Ticket

NO. 040789 15381

Well Name & No. Pratt #1 Test No. 1 Date 1-27-11
 Company Castle Resources Elevation 2672 KB 2664 GL
 Address Box 87 Schoenchen Ks 67667
 Co. Rep / Geo. Jerry Green Rig Falcon
 Location: Sec. 21 Twp. 8S Rge. 28W Co. Sheridan State Ks

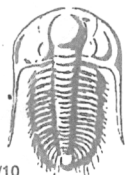
Interval Tested 3827-3862 Zone Tested Toronto
 Anchor Length 35' Drill Pipe Run 3660' Mud Wt. 8.9
 Top Packer Depth 3823 Drill Collars Run 150' Vis 48
 Bottom Packer Depth 3827 Wt. Pipe Run 0 WL 7.2
 Total Depth 3862 Chlorides 700 ppm System LCM 2
 Blow Description IF: Blow built to 1"
IS: No Return
FF No Blow, Flushed tool @ 7 min, NO Blow
FS

Rec	Feet of	%gas	%oil	%water	%mud
<u>10</u>	<u>OSM</u>	<u>5</u>		<u>95</u>	
Rec	Feet of	%gas	%oil	%water	%mud
Rec	Feet of	%gas	%oil	%water	%mud
Rec	Feet of	%gas	%oil	%water	%mud

Rec Total 10 BHT 114 Gravity — API RW — @ — °F Chlorides — ppm

(A) Initial Hydrostatic 1914 Test 1125.00 T-On Location 2:10 AM
 (B) First Initial Flow 13 Jars — T-Started 5:45 AM
 (C) First Final Flow 23 Safety Joint — T-Open 8:45 AM
 (D) Initial Shut-In 946 Circ Sub NIC T-Pulled 11:45 AM 10:35 AM
 (E) Second Initial Flow 25 Hourly Standby — T-Out 12:05 PM
 (F) Second Final Flow — Mileage 100 mi @ 1.25 = 125.00 Comments —
 (G) Final Shut-In — Sampler —
 (H) Final Hydrostatic 1858 Straddle — Ruined Shale Packer —
 Shale Packer — Ruined Packer —
 Extra Packer — Extra Copies —
 Extra Recorder — Sub Total 0
 Day Standby — Total 1250
 Accessibility — MP/DST Disc't —
 Sub Total 1250

Approved By _____ Our Representative [Signature]
 Trilobite Testing Inc. shall not be liable for damaged of any kind of the property or personnel of the one for whom a test is made, or for any loss suffered or sustained, directly or indirectly, through the use of its equipment, or its statements or opinion concerning the results of any test, tools lost or damaged in the hole shall be paid for at cost by the party for whom the test is made.



TRILOBITE TESTING INC.

P.O. Box 1733 • Hays, Kansas 67601

RECEIVED
FEB 07 2011

Test Ticket

NO. 040790

4/10

Well Name & No. Pratt #1 BY: _____ Test No. 2 Date 1/27/11
 Company Castle Resources Elevation 2672 KB 2664 GL
 Address Box 87 Schoenchen, KS. 67667
 Co. Rep / Geo. Jerry Green Rig Falcon #1
 Location: Sec. 21 Twp. 8s Rge. 28w Co. Sheridan State KS

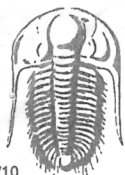
Interval Tested 3852 - 3873 Zone Tested "A"
 Anchor Length 21' Drill Pipe Run 3856 Mud Wt. 9.1
 Top Packer Depth 3848 Drill Collars Run 0 Vis 50
 Bottom Packer Depth 3852 Wt. Pipe Run 0 WL 7.2
 Total Depth 3873 Chlorides 800 ppm System LCM 2
 Blow Description IF Blow built to 1/2"
IS NO Return
FF NO Blow Flushed tool @ 10 min, NO Blow
FS —

Rec	Feet of	%gas	%oil	%water	%mud
<u>10</u>	<u>0.5m</u>			<u>100</u>	
Rec	Feet of	%gas	%oil	%water	%mud
Rec	Feet of	%gas	%oil	%water	%mud
Rec	Feet of	%gas	%oil	%water	%mud
Rec	Feet of	%gas	%oil	%water	%mud

Rec Total 10 BHT 112 Gravity — API RW — @ — °F Chlorides — ppm

(A) Initial Hydrostatic 1917 Test 1125 T-On Location 7:55 PM
 (B) First Initial Flow 16 Jars _____ T-Started 9:13 PM
 (C) First Final Flow 20 Safety Joint _____ T-Open 1:00 AM
 (D) Initial Shut-In 1315 Circ Sub N/K T-Pulled 3:00 AM
 (E) Second Initial Flow 26 Hourly Standby _____ T-Out 5:00 AM
 (F) Second Final Flow — Mileage 100 ft @ 1.25 = 125.00 Comments _____
 (G) Final Shut-In — Sampler _____
 (H) Final Hydrostatic 1895 Straddle _____ Ruined Shale Packer _____
 Initial Open 45 Shale Packer _____ Ruined Packer _____
 Initial Shut-In 45 Extra Packer _____ Extra Copies _____
 Final Flow 30 Extra Recorder _____ Sub Total 0
 Final Shut-In — Day Standby _____ Total 1250
 Accessibility _____ MP/DST Disc't _____
 Sub Total 1250

Approved By _____ Our Representative [Signature]
 Trilobite Testing Inc. shall not be liable for damaged of any kind of the property or personnel of the one for whom a test is made, or for any loss suffered or sustained, directly or indirectly, through the use of its equipment, or its statements or opinion concerning the results of any test, tools lost or damaged in the hole shall be paid for at cost by the party for whom the test is made.



TRILOBITE TESTING INC.

P.O. Box 1733 • Hays, Kansas 67601

RECEIVED
FEB 07 2011

Test Ticket

NO. 040792

4/10

Well Name & No. Proct #1 Test No. 3 Date 1/29/11
 Company Castle Resources Elevation 2672 KB 2664 GL
 Address Box 87 Schoenchen, KS 67667
 Co. Rep / Geo. Jerry Green Rig Falcon #1
 Location: Sec. 21 Twp. Ss Rge. 28W Co. Sheridan State Ks

Interval Tested 3878-3920 Zone Tested "B, C, D"
 Anchor Length 42' Drill Pipe Run 3885 Mud Wt. 9.0
 Top Packer Depth 3874 Drill Collars Run 30' Vis 50
 Bottom Packer Depth 3878 Wt. Pipe Run 0 WL 7.4
 Total Depth 3920 Chlorides 700 ppm System LCM 3

Blow Description IF NO Blow
~~Hit~~ Hit tight spot and stuck out 20' early, picked up
 a lot of mud... got to bottom after and packers held, no blow.
 pulled pipe to re condition hole and drill to next zone.

Rec	Feet of	%gas	%oil	%water	%mud
<u>1450</u>	<u>Mud</u>			<u>100</u>	
Rec	Feet of	%gas	%oil	%water	%mud
Rec	Feet of	%gas	%oil	%water	%mud
Rec	Feet of	%gas	%oil	%water	%mud
Rec	Feet of	%gas	%oil	%water	%mud

Rec Total 1450 BHT 107 Gravity _____ API RW _____ @ _____ °F Chlorides _____ ppm

(A) Initial Hydrostatic 1764
 (B) First Initial Flow 645
 (C) First Final Flow _____
 (D) Initial Shut-In _____
 (E) Second Initial Flow _____
 (F) Second Final Flow _____
 (G) Final Shut-In _____
 (H) Final Hydrostatic 1833

Test 925
 Jars _____
 Safety Joint _____
 Circ Sub 50'
 Hourly Standby _____
 Mileage 6000 @ 1.25 = 125.00
 Sampler _____
 Straddle _____
 Shale Packer _____
 Extra Packer _____
 Extra Recorder _____
 Day Standby _____
 Accessibility _____
 Sub Total 1100

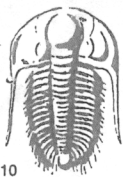
T-On Location 10:00 AM
 T-Started 10:00 AM
 T-Open 12:40 PM
 T-Pulled 1:10 PM
 T-Out 5:00 PM

Comments _____
 Ruined Shale Packer _____
 Ruined Packer _____
 Extra Copies _____
 Sub Total 0
 Total 1100
 MP/DST Disc't _____

Initial Open 30
 Initial Shut-In _____
 Final Flow _____
 Final Shut-In _____

Approved By _____ Our Representative Kevin

TriLOBite Testing Inc. shall not be liable for damaged of any kind of the property or personnel of the one for whom a test is made, or for any loss suffered or sustained, directly or indirectly, through the use of its equipment, or its statements or opinion concerning the results of any test, tools lost or damaged in the hole shall be paid for at cost by the party for whom the test is made.



TRILOBITE TESTING INC.

P.O. Box 1733 • Hays, Kansas 67601

RECEIVED
FEB 07 2011

Test Ticket

NO. 040791

4/10

Well Name & No. Pratt #1 Test No. 3 Date 1/28/11
 Company Castle Resources Elevation 2672 KB 2664 GL
 Address Box 82 Schönchen, KS 67667
 Co. Rep / Geo. Jerry Green Rig Falcon #1
 Location: Sec. 21 Twp. 8s Rge. 28w Co. Sheridan State KS

Interval Tested 3878-3920 Zone Tested _____
 Anchor Length 42' Drill Pipe Run _____ Mud Wt. 9.0
 Top Packer Depth 3874 Drill Collars Run 0 Vis 42
 Bottom Packer Depth 3878 Wt. Pipe Run 0 WL 7.4
 Total Depth 3920 Chlorides 500 ppm System LCM 2
 Blow Description IF
IS
FF
FS

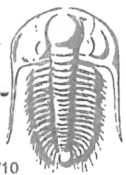
Rec	Feet of	%gas	%oil	%water	%mud
Rec	Feet of	%gas	%oil	%water	%mud
Rec	Feet of	%gas	%oil	%water	%mud
Rec	Feet of	%gas	%oil	%water	%mud
Rec	Feet of	%gas	%oil	%water	%mud

Rec Total _____ BHT _____ Gravity _____ API RW _____ @ _____ °F Chlorides _____ ppm

(A) Initial Hydrostatic _____ Test _____ T-On Location 1:50 pm
 (B) First Initial Flow _____ Jars _____ T-Started 2:08 pm
 (C) First Final Flow _____ Safety Joint _____ T-Open _____
 (D) Initial Shut-In _____ Circ Sub N/C T-Pulled _____
 (E) Second Initial Flow _____ Hourly Standby 1 1/2 hrs 750 T-Out 9:17 PM 7.5hrs
 (F) Second Final Flow _____ Mileage 100 ft @ 1.252 125 Comments Rotary clutch
 (G) Final Shut-In _____ Sampler _____ went out 1/2 way in hole.
 (H) Final Hydrostatic _____ Straddle _____ Pull pipe to fix it
 Ruined Shale Packer _____
 Shale Packer _____
 Ruined Packer _____
 Extra Packer _____
 Extra Recorder _____
 Day Standby _____
 Accessibility _____
 Sub Total 875 MP/DST Disc't _____

Approved By _____ Our Representative _____

Trilobite Testing Inc. shall not be liable for damaged of any kind of the property or personnel of the one for whom a test is made, or for any loss suffered or sustained, directly or indirectly, through the use of its equipment, or its statements or opinion concerning the results of any test, tools lost or damaged in the hole shall be paid for at cost by the party for whom the test is made.



TRILOBITE TESTING INC.

P.O. Box 1733 • Hays, Kansas 67601

RECEIVED
FEB 07 2011

Test Ticket

NO. 040795

410

BY: _____

Well Name & No. Pratt #1 Test No. 4 Date 1/30/11
 Company Castle Resources Elevation 2672 KB 2664 GL
 Address Box 87 Schoenchen, KS 67667
 Co. Rep / Geo. Jerry Green Rig Falcon #1
 Location: Sec. 21 Twp. Ss Rge. 28W Co. Sheridan State KS

Interval Tested 3970-4150 Zone Tested "G, H, I, J, K, L"
 Anchor Length 180' Drill Pipe Run 3819 Mud Wt. 9.1
 Top Packer Depth 3966 Drill Collars Run 150' Vis 44
 Bottom Packer Depth 3970 Wt. Pipe Run 0 WL 8.0
 Total Depth 4150 Chlorides 800 ppm System LCM 3

Blow Description IF: B.O.B. in 15 min.
IS: No Return
FF: B.O.B. in 20 min
FS: No Return

Rec	Feet of	%gas	%oil	%water	%mud
316	OSWm		30	70	
124	OSWm		50	50	
186	6 MW		85	15	
120	MW		90	10	
60	OSM (heavy mud)		5	95	
Rec Total	806'	BHT 127	Gravity _____	API RW <u>0.8</u>	@ <u>69</u> °F Chlorides <u>7,700</u> ppm

(A) Initial Hydrostatic 1969 Test 1225' T-On Location 10:30 pm
 (B) First Initial Flow 27 Jars _____ T-Started 1:18 Am
 (C) First Final Flow 199 Safety Joint N/C T-Open 3:50 Am
 (D) Initial Shut-In 1317 Circ Sub N/C T-Pulled 6:50 Am
 (E) Second Initial Flow 204 Hourly Standby 1 1/2 hr 150' T-Out 10:00 Am
 (F) Second Final Flow 328 Mileage 100 ft @ 1.25 = 12500 Comments _____
 (G) Final Shut-In 1304 Sampler _____
 (H) Final Hydrostatic 1943 Straddle _____ Ruined Shale Packer _____

Initial Open 45 Shale Packer _____ Ruined Packer _____
 Initial Shut-In 45 Extra Packer _____ Extra Copies _____
 Final Flow 45 Extra Recorder _____ Sub Total 0
 Final Shut-In 45 Day Standby _____ Total 1500
 Accessibility _____ MP/DST Disc't _____
 Sub Total 1500

Approved By _____ Our Representative _____

Trilobite Testing Inc. shall not be liable for damaged of any kind of the property or personnel of the one for whom a test is made, or for any loss suffered or sustained, directly or indirectly, through the use of its equipment, or its statements or opinion concerning the results of any test, tools lost or damaged in the hole shall be paid for at cost by the party for whom the test is made.