

**TRILOBITE
TESTING, INC.**

DRILL STEM TEST REPORT

Val Energy Inc.
125 N Market St
STE 1710
Wichita KS 67202
ATTN: Harley Sales

17-8-35 Thomas Co KS

Robert 1-17

Job Ticket: 64554

DST#: 1

Test Start: 2016.01.07 @ 11:41:15

GENERAL INFORMATION:

Formation: **H-J**
 Deviated: No Whipstock: ft (KB)
 Test Type: Conventional Bottom Hole (Initial)
 Time Tool Opened: 13:39:15
 Tester: Mike Roberts
 Time Test Ended: 17:46:00
 Unit No: 65
 Interval: **4302.00 ft (KB) To 4360.00 ft (KB) (TVD)**
 Reference Elevations: 3338.00 ft (KB)
 Total Depth: 4360.00 ft (KB) (TVD)
 3333.00 ft (CF)
 Hole Diameter: 7.88 inches
 Hole Condition: Fair
 KB to GR/CF: 5.00 ft

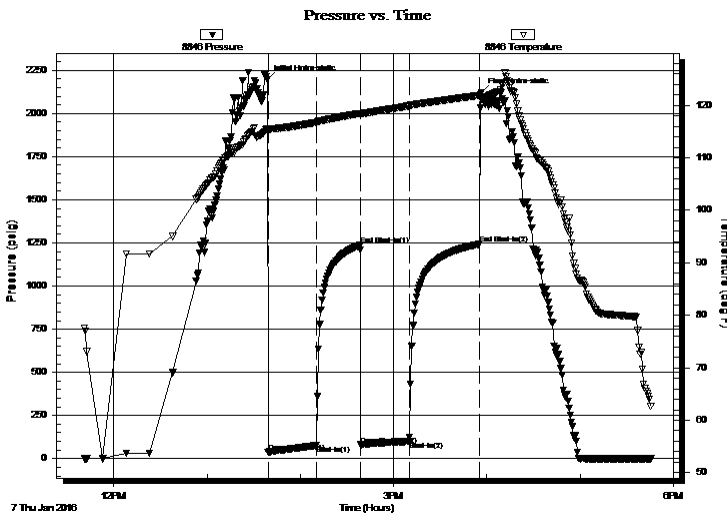
Serial #: 8846

Inside

Press @ Run Depth: 99.59 psig @ 4307.00 ft (KB) Capacity: 8000.00 psig
 Start Date: 2016.01.07 End Date: 2016.01.07 Last Calib.: 2016.01.07
 Start Time: 11:41:15 End Time: 17:46:00 Time On Btm: 2016.01.07 @ 13:38:45
 Time Off Btm: 2016.01.07 @ 15:56:45

TEST COMMENT: IF: Built to 2 1/2" blow
 IS: No return blow
 FF: Built to 2" blow
 FS: No return blow

PRESSURE SUMMARY



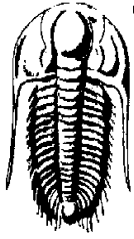
Time (Min.)	Pressure (psig)	Temp (deg F)	Annotation
0	2197.12	115.47	Initial Hydro-static
1	37.43	115.10	Open To Flow (1)
32	75.40	116.73	Shut-In(1)
60	1236.91	118.45	End Shut-In(1)
61	80.50	118.21	Open To Flow (2)
92	99.59	119.85	Shut-In(2)
137	1242.56	121.86	End Shut-In(2)
138	2119.06	121.07	Final Hydro-static

Recovery

Length (ft)	Description	Volume (bbl)
72.00	w cm 30%w 70%m	0.35
62.00	mcw 30%m 70%w	0.43

Gas Rates

	Choke (inches)	Pressure (psig)	Gas Rate (MMcf/d)



**TRILOBITE
TESTING, INC.**

DRILL STEM TEST REPORT

FLUID SUMMARY

Val Energy Inc.

17-8-35 Thomas Co KS

125 N Market St
STE 1710
Wichita KS 67202

Robert 1-17

Job Ticket: 64554

DST#: 1

ATTN: Harley Sales

Test Start: 2016.01.07 @ 11:41:15

Mud and Cushion Information

Mud Type: Gel Chem

Cushion Type:

Oil API:

0 deg API

Mud Weight: 9.00 lb/gal

Cushion Length:

ft

Water Salinity:

50000 ppm

Viscosity: 67.00 sec/qt

Cushion Volume:

bbbl

Water Loss: 9.18 in³

Gas Cushion Type:

Resistivity: 0.00 ohm.m

Gas Cushion Pressure:

psig

Salinity: 5000.00 ppm

Filter Cake: 1.00 inches

Recovery Information

Recovery Table

Length ft	Description	Volume bbbl
72.00	w cm 30%w 70%m	0.354
62.00	mcw 30%m 70%w	0.432

Total Length: 134.00 ft Total Volume: 0.786 bbl

Num Fluid Samples: 0

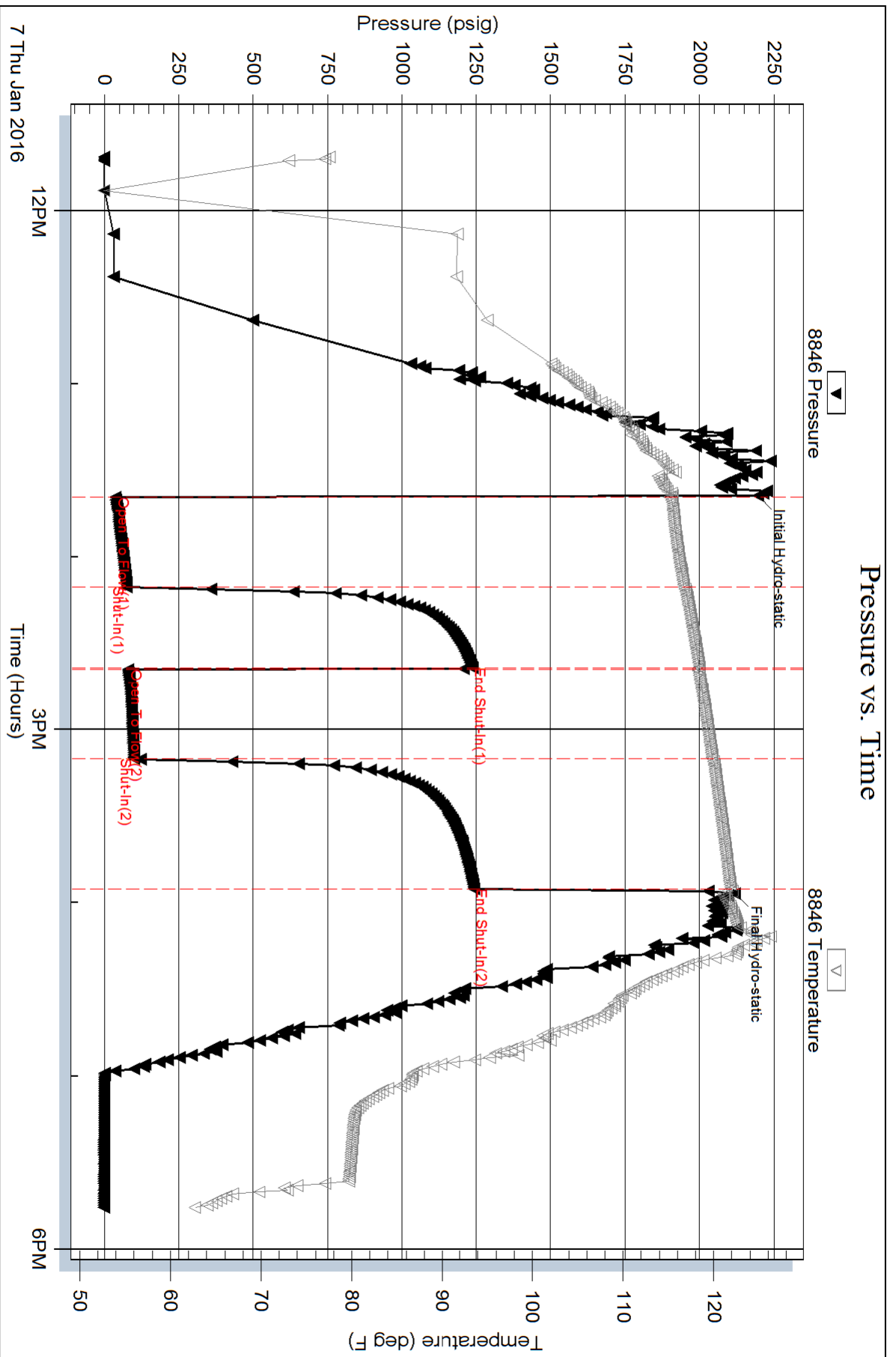
Num Gas Bombs: 0

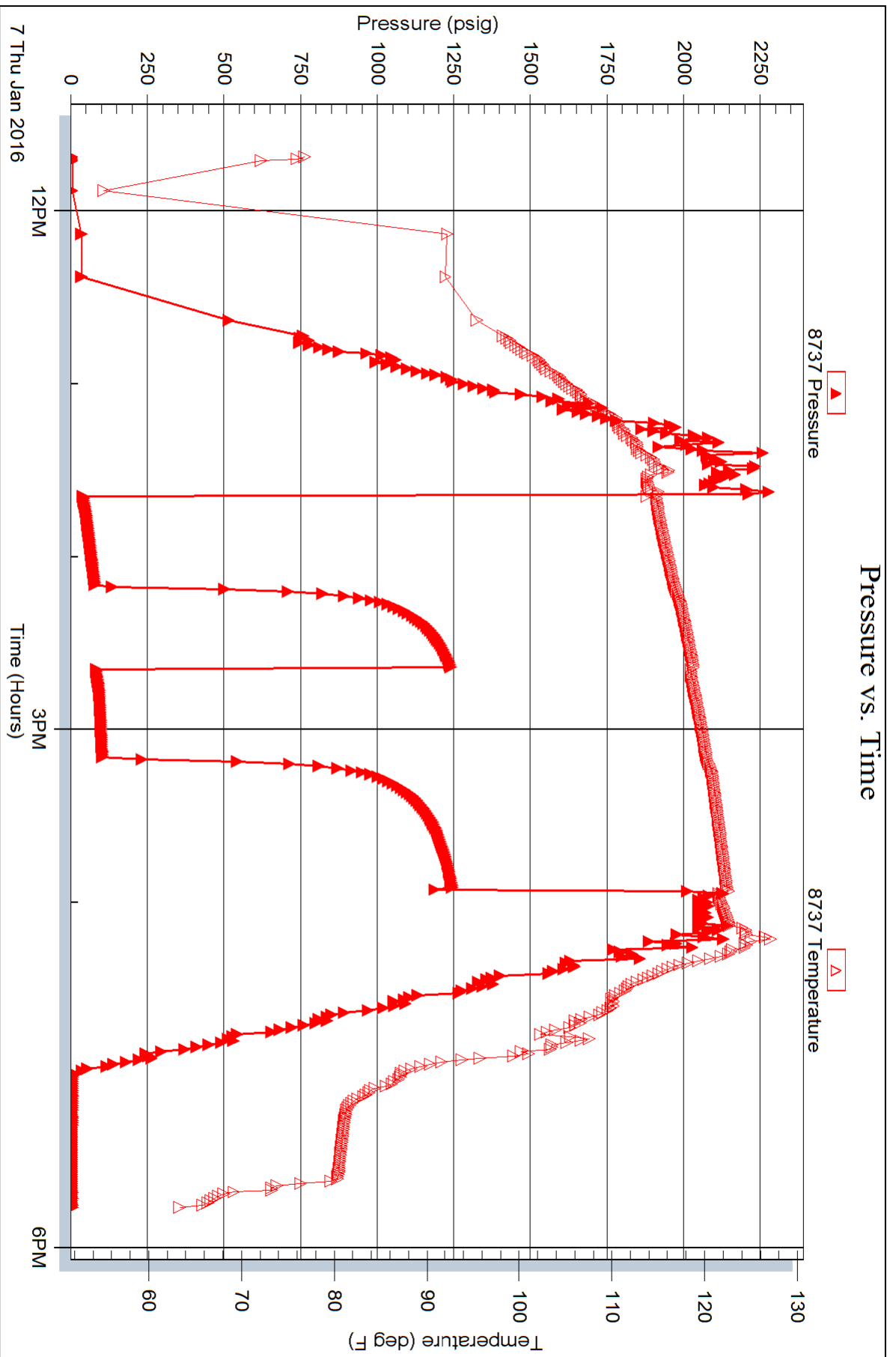
Serial #:

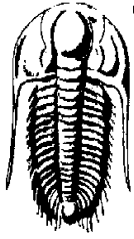
Laboratory Name:

Laboratory Location:

Recovery Comments: RW= .3 @ 37.4*= 50,000 ppm







**TRILOBITE
TESTING, INC.**

DRILL STEM TEST REPORT

Val Energy Inc.
125 N Market St
STE 1710
Wichita KS 67202
ATTN: Harley Sales

17-8-35 Thomas Co KS

Robert 1-17

Job Ticket: 64555

DST#: 2

Test Start: 2016.01.08 @ 01:15:15

GENERAL INFORMATION:

Formation: **K**
 Deviated: No Whipstock: ft (KB)
 Test Type: Conventional Bottom Hole (Reset)
 Time Tool Opened: 02:34:45 Tester: Mike Roberts
 Time Test Ended: 04:58:30 Unit No: 65
 Interval: **4362.00 ft (KB) To 4390.00 ft (KB) (TVD)** Reference Elevations: 3338.00 ft (KB)
 Total Depth: 4390.00 ft (KB) (TVD) 3333.00 ft (CF)
 Hole Diameter: 7.88 inches Hole Condition: Fair KB to GR/CF: 5.00 ft

Serial #: 8846

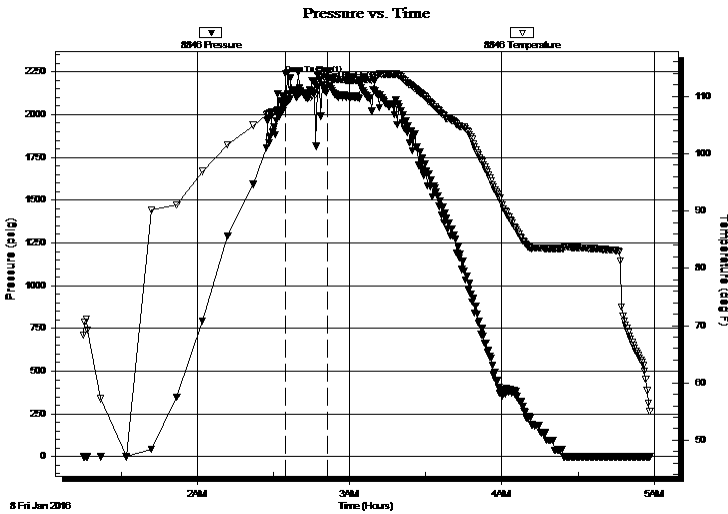
Inside

Press @ Run Depth: 2258.10 psig @ 4385.00 ft (KB) Capacity: 8000.00 psig
 Start Date: 2016.01.08 End Date: 2016.01.08 Last Calib.: 2016.01.08
 Start Time: 01:15:15 End Time: 04:58:30 Time On Btm:
 Time Off Btm:

TEST COMMENT: IF:PACKER FAILURE

IS:
FF:
FS:

PRESSURE SUMMARY



Time (Min.)	Pressure (psig)	Temp (deg F)	Annotation
0	2239.56	108.91	Open To Flow (1)
17	2258.10	113.26	End Shut-In(1)

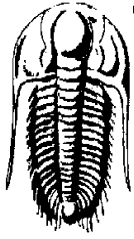
Recovery

Length (ft)	Description	Volume (bbl)
400.00	MUD 100% _m	4.52

* Recovery from multiple tests

Gas Rates

Choke (inches)	Pressure (psig)	Gas Rate (MMcf/d)



**TRILOBITE
TESTING, INC.**

DRILL STEM TEST REPORT

FLUID SUMMARY

Val Energy Inc.

17-8-35 Thomas Co KS

125 N Market St
STE 1710
Wichita KS 67202

Robert 1-17

Job Ticket: 64555

DST#: 2

ATTN: Harley Sales

Test Start: 2016.01.08 @ 01:15:15

Mud and Cushion Information

Mud Type: Gel Chem

Cushion Type:

Oil API:

0 deg API

Mud Weight: 9.00 lb/gal

Cushion Length:

ft

Water Salinity:

0 ppm

Viscosity: 53.00 sec/qt

Cushion Volume:

bbbl

Water Loss: 7.59 in³

Gas Cushion Type:

Resistivity: 0.00 ohm.m

Gas Cushion Pressure:

psig

Salinity: 4000.00 ppm

Filter Cake: 1.00 inches

Recovery Information

Recovery Table

Length ft	Description	Volume bbl
400.00	MUD 100% _m	4.518

Total Length: 400.00 ft Total Volume: 4.518 bbl

Num Fluid Samples: 0

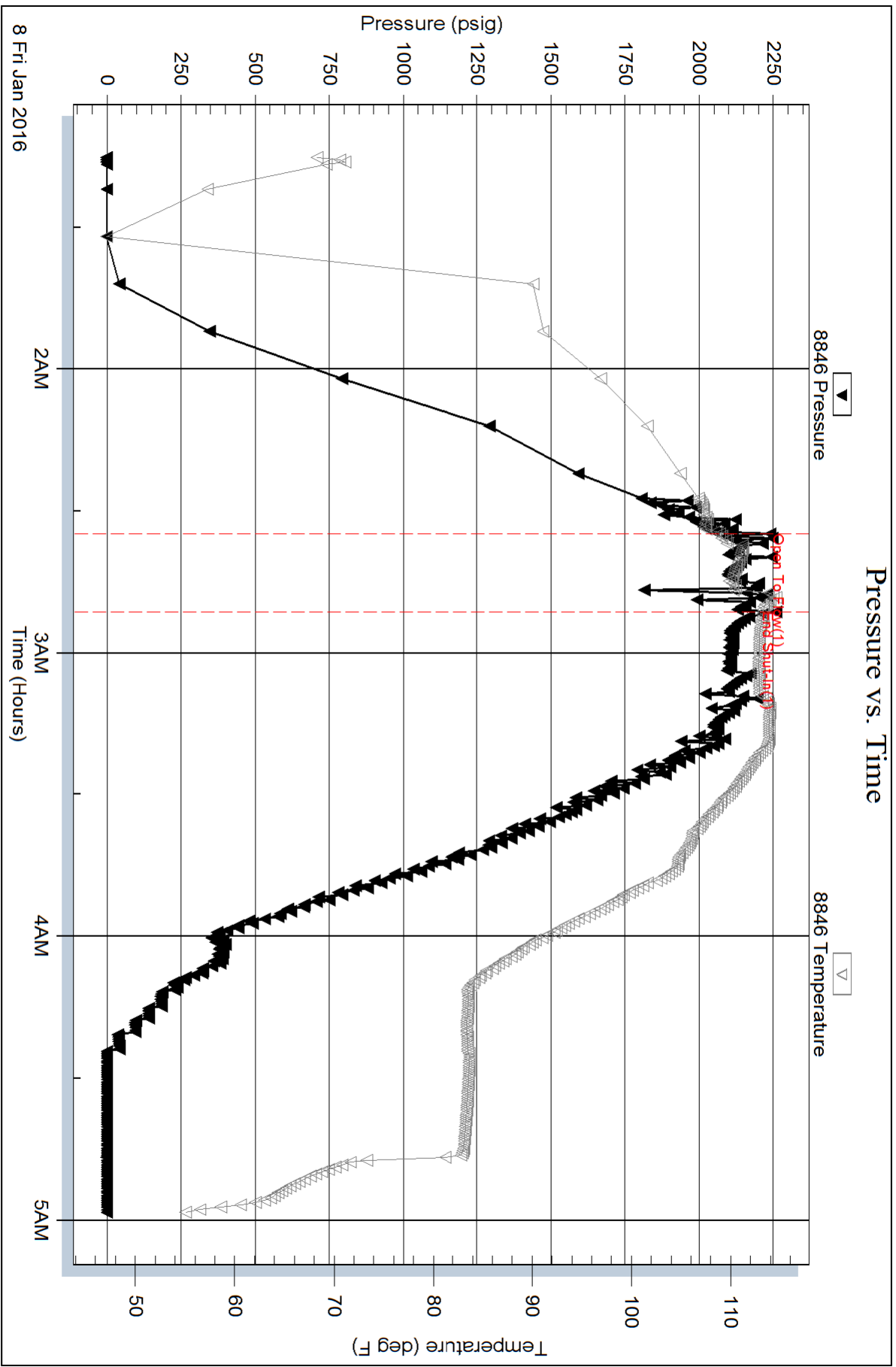
Num Gas Bombs: 0

Serial #:

Laboratory Name:

Laboratory Location:

Recovery Comments:





TRILOBITE TESTING, INC.

DRILL STEM TEST REPORT

Val Energy Inc.
 125 N Market St
 STE 1710
 Wichita KS 67202
 ATTN: Harley Sales

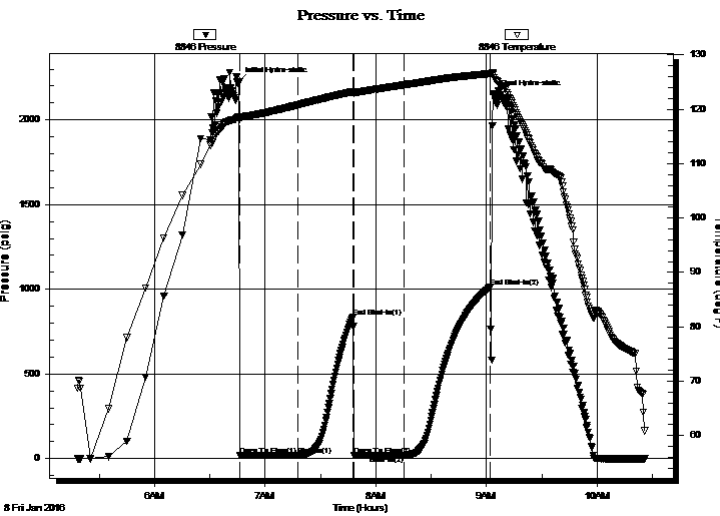
17-8-35 Thomas Co KS
Robert 1-17
 Job Ticket: 64556 **DST#: 3**
 Test Start: 2016.01.08 @ 05:18:15

GENERAL INFORMATION:

Formation: **K**
 Deviated: No Whipstock: ft (KB)
 Time Tool Opened: 06:46:00
 Time Test Ended: 10:25:45
Interval: 4368.00 ft (KB) To 4390.00 ft (KB) (TVD)
 Total Depth: 4390.00 ft (KB) (TVD)
 Hole Diameter: 7.88 inches Hole Condition: Fair
 Test Type: Conventional Bottom Hole (Reset)
 Tester: Mike Roberts
 Unit No: 65
 Reference Elevations: 3338.00 ft (KB)
 3333.00 ft (CF)
 KB to GR/CF: 5.00 ft

Serial #: 8846 **Inside**
 Press@RunDepth: 18.70 psig @ 4385.00 ft (KB) Capacity: 8000.00 psig
 Start Date: 2016.01.08 End Date: 2016.01.08 Last Calib.: 2016.01.08
 Start Time: 05:18:15 End Time: 10:25:45 Time On Btm: 2016.01.08 @ 06:45:45
 Time Off Btm: 2016.01.08 @ 09:03:45

TEST COMMENT: IF: Built to 1 1/2" blow
 IS: No return blow
 FF: No blow
 FS: No return blow



PRESSURE SUMMARY

Time (Min.)	Pressure (psig)	Temp (deg F)	Annotation
0	2224.49	118.58	Initial Hydro-static
1	17.62	118.18	Open To Flow (1)
32	18.63	120.78	Shut-In(1)
62	837.75	123.19	End Shut-In(1)
63	18.50	122.97	Open To Flow (2)
90	18.70	124.46	Shut-In(2)
136	1011.07	126.53	End Shut-In(2)
138	2151.54	126.48	Final Hydro-static

Recovery

Length (ft)	Description	Volume (bbl)
2.00	mud 100% m	0.01

* Recovery from multiple tests

Gas Rates

Choke (inches)	Pressure (psig)	Gas Rate (MMcf/d)



**TRILOBITE
TESTING, INC**

DRILL STEM TEST REPORT

FLUID SUMMARY

Val Energy Inc.

17-8-35 Thomas Co KS

125 N Market St
STE 1710
Wichita KS 67202

Robert 1-17

Job Ticket: 64556

DST#: 3

ATTN: Harley Sales

Test Start: 2016.01.08 @ 05:18:15

Mud and Cushion Information

Mud Type: Gel Chem

Cushion Type:

Oil API:

0 deg API

Mud Weight: 9.00 lb/gal

Cushion Length:

ft

Water Salinity:

0 ppm

Viscosity: 67.00 sec/qt

Cushion Volume:

bbbl

Water Loss: 9.14 in³

Gas Cushion Type:

Resistivity: 0.00 ohm.m

Gas Cushion Pressure:

psig

Salinity: 5000.00 ppm

Filter Cake: 1.00 inches

Recovery Information

Recovery Table

Length ft	Description	Volume bbl
2.00	mud 100%m	0.010

Total Length: 2.00 ft Total Volume: 0.010 bbl

Num Fluid Samples: 0

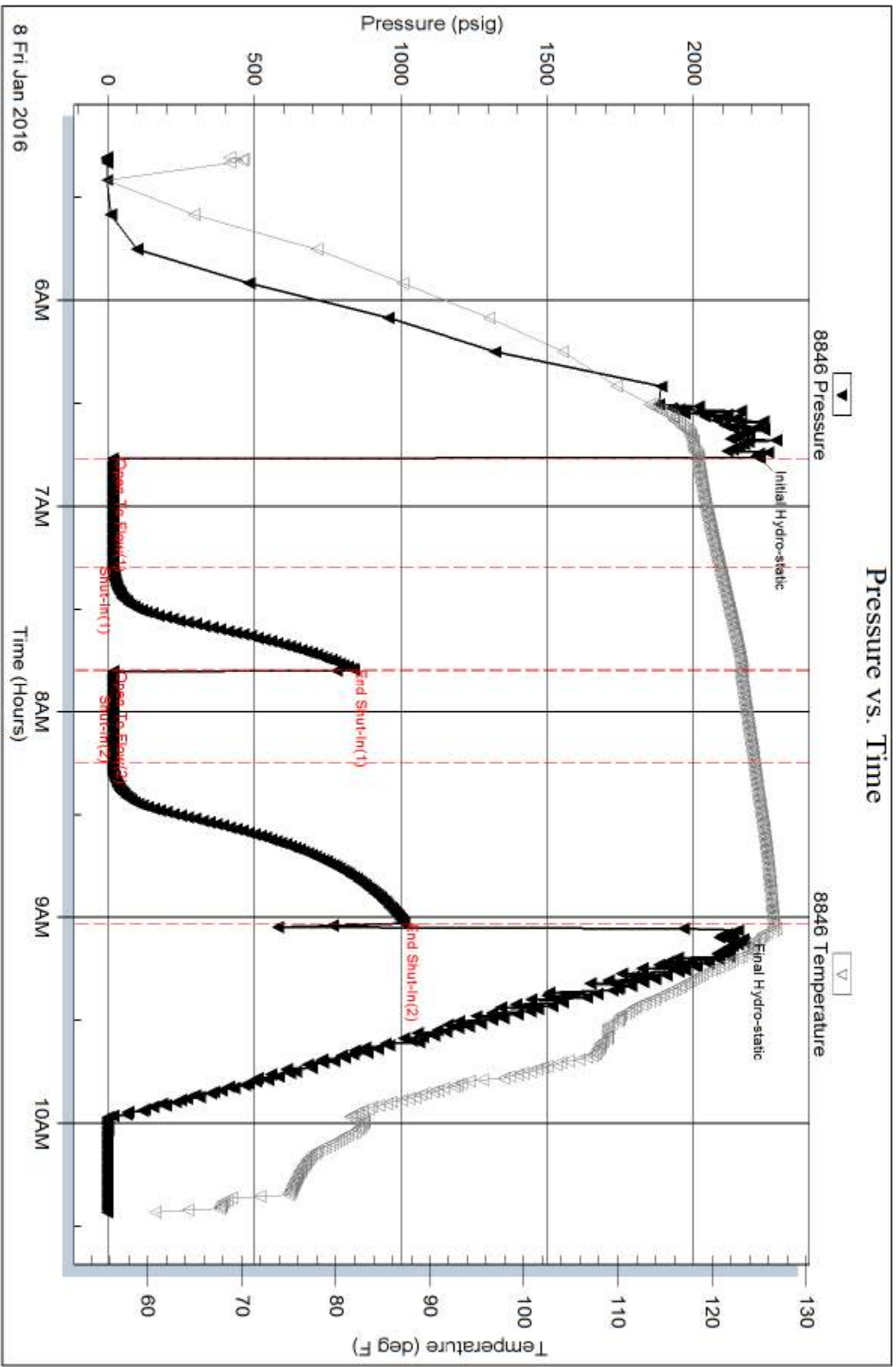
Num Gas Bombs: 0

Serial #:

Laboratory Name:

Laboratory Location:

Recovery Comments:





TRILOBITE TESTING, INC.

DRILL STEM TEST REPORT

Val Energy Inc.
 125 N Market St
 STE 1710
 Wichita KS 67202
 ATTN: Harley Sales

17-8-35 Thomas Co KS

Robert 1-17

Job Ticket: 64557

DST#: 4

Test Start: 2016.01.08 @ 19:23:15

GENERAL INFORMATION:

Formation: **K**
 Deviated: No Whipstock: ft (KB)
 Time Tool Opened:
 Time Test Ended: 23:06:45
 Interval: **4386.00 ft (KB) To 4420.00 ft (KB) (TVD)**
 Total Depth: 4420.00 ft (KB) (TVD)
 Hole Diameter: 7.88 inches Hole Condition: Fair
 Test Type: Conventional Bottom Hole (Reset)
 Tester: Mike Roberts
 Unit No: 65
 Reference Elevations: 3338.00 ft (KB)
 3333.00 ft (CF)
 KB to GR/CF: 5.00 ft

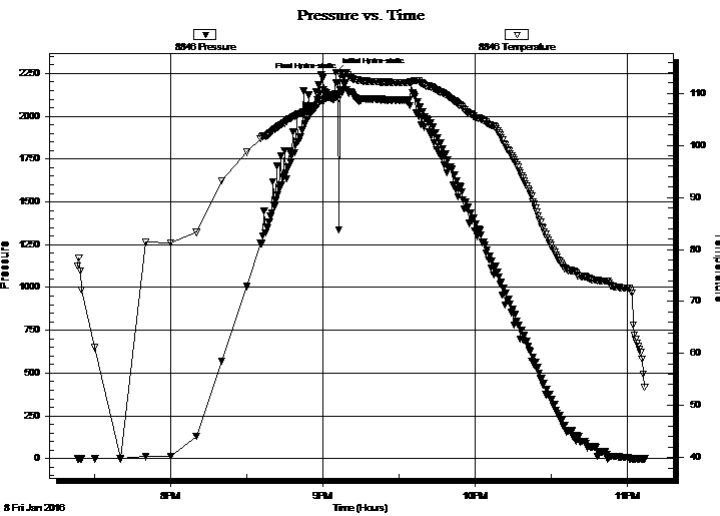
Serial #: 8846

Inside

Press@RunDepth: psig @ 4415.00 ft (KB) Capacity: 8000.00 psig
 Start Date: 2016.01.08 End Date: 2016.01.08 Last Calib.: 2016.01.08
 Start Time: 19:23:15 End Time: 23:06:45 Time On Btm: 2016.01.08 @ 21:05:00
 Time Off Btm: 2016.01.08 @ 21:08:00

TEST COMMENT: IS:PACKER FAILURE

FF:
 FF:
 FS:



PRESSURE SUMMARY

Time (Min.)	Pressure (psig)	Temp (deg F)	Annotation
0	2256.50	109.22	Initial Hydro-static
3	2226.86	113.59	Final Hydro-static

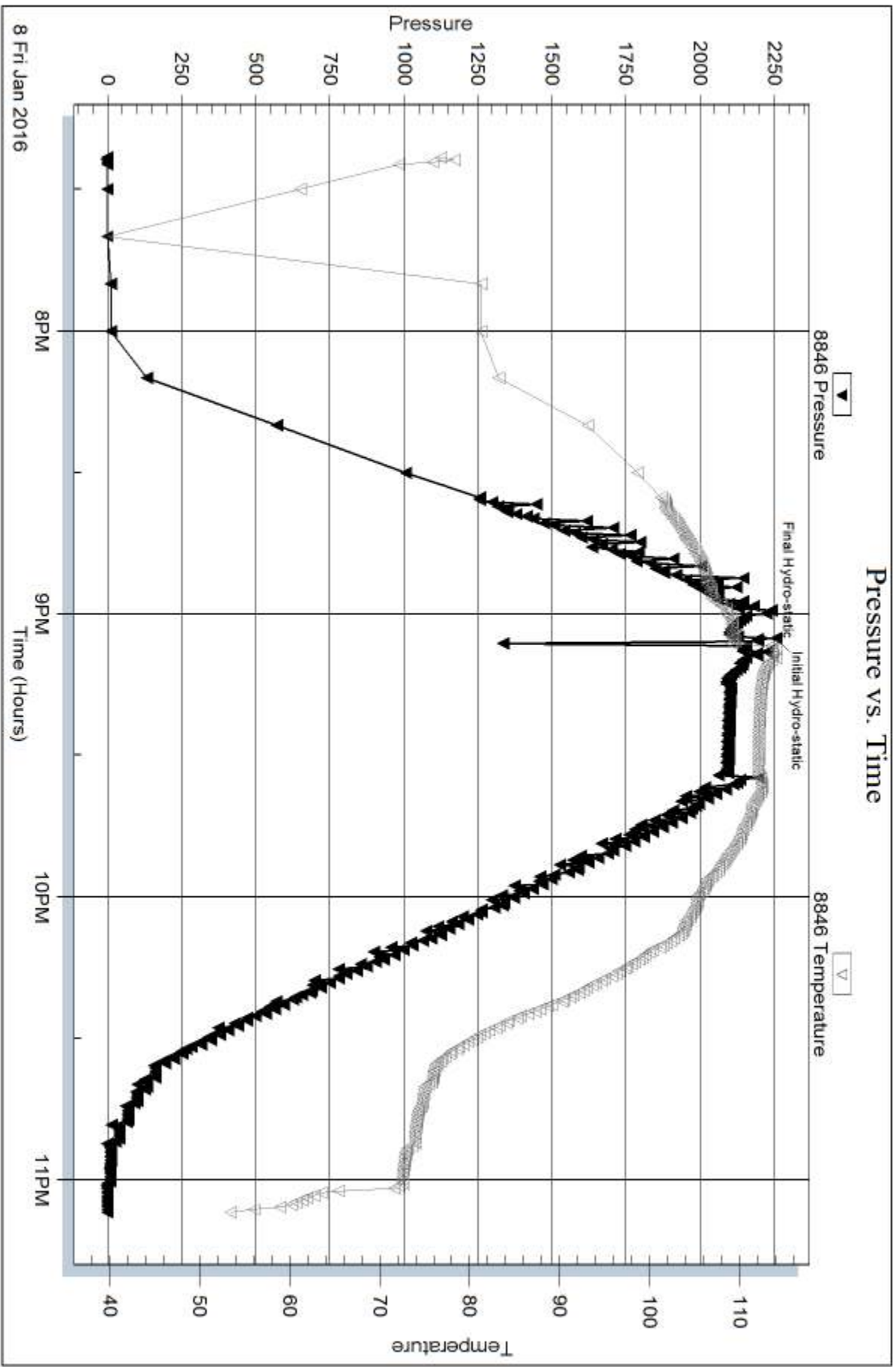
Recovery

Length (ft)	Description	Volume (bbl)
212.00	MUD 100%M	1.88

* Recovery from multiple tests

Gas Rates

Choke (inches)	Pressure (psig)	Gas Rate (MMcf/d)





TRILOBITE TESTING, INC.

DRILL STEM TEST REPORT

Val Energy Inc.
 125 N Market St
 STE 1710
 Wichita KS 67202
 ATTN: Harley Sales

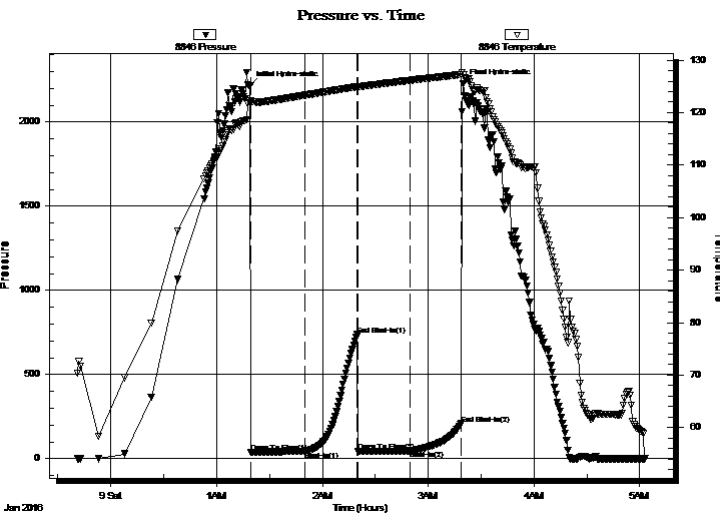
17-8-35 Thomas Co KS
Robert 1-17
 Job Ticket: 64558 **DST#: 5**
 Test Start: 2016.01.08 @ 23:41:15

GENERAL INFORMATION:

Formation: **L**
 Deviated: No Whipstock: ft (KB)
 Time Tool Opened: 01:19:15
 Time Test Ended: 05:03:00
 Interval: **4372.00 ft (KB) To 4420.00 ft (KB) (TVD)**
 Total Depth: 4360.00 ft (KB) (TVD)
 Hole Diameter: 7.88 inches Hole Condition: Fair
 Test Type: Conventional Bottom Hole (Reset)
 Tester: Mike Roberts
 Unit No: 65
 Reference Elevations: 3338.00 ft (KB)
 3333.00 ft (CF)
 KB to GR/CF: 5.00 ft

Serial #: 8846 Inside
 Press@RunDepth: 47.73 psig @ 4376.00 ft (KB) Capacity: 8000.00 psig
 Start Date: 2016.01.08 End Date: 2016.01.09 Last Calib.: 2016.01.09
 Start Time: 23:41:15 End Time: 05:03:00 Time On Btm: 2016.01.09 @ 01:19:00
 Time Off Btm: 2016.01.09 @ 03:20:00

TEST COMMENT: IF: Built to 1" blow
 IS: No return blow
 FF: Built to week surface blow
 FS: No return blow



PRESSURE SUMMARY

Time (Min.)	Pressure (psig)	Temp (deg F)	Annotation
0	2216.48	122.34	Initial Hydro-static
1	37.71	121.84	Open To Flow (1)
31	42.34	123.30	Shut-In(1)
61	736.63	124.95	End Shut-In(1)
61	44.56	124.67	Open To Flow (2)
91	47.73	126.16	Shut-In(2)
120	207.35	127.25	End Shut-In(2)
121	2229.55	127.13	Final Hydro-static

Recovery

Length (ft)	Description	Volume (bbl)
5.00	mud w ith a trace of oil 100%m	0.02

* Recovery from multiple tests

Gas Rates

Choke (inches)	Pressure (psig)	Gas Rate (MMcf/d)



**TRILOBITE
TESTING, INC**

DRILL STEM TEST REPORT

FLUID SUMMARY

Val Energy Inc.

17-8-35 Thomas Co KS

125 N Market St
STE 1710
Wichita KS 67202

Robert 1-17

Job Ticket: 64558

DST#: 5

ATTN: Harley Sales

Test Start: 2016.01.08 @ 23:41:15

Mud and Cushion Information

Mud Type: Gel Chem

Cushion Type:

Oil API:

0 deg API

Mud Weight: 9.00 lb/gal

Cushion Length:

ft

Water Salinity:

0 ppm

Viscosity: 59.00 sec/qt

Cushion Volume:

bbf

Water Loss: 8.78 in³

Gas Cushion Type:

Resistivity: 0.00 ohm.m

Gas Cushion Pressure:

psig

Salinity: 6000.00 ppm

Filter Cake: 1.00 inches

Recovery Information

Recovery Table

Length ft	Description	Volume bbf
5.00	mud w ith a trace of oil 100%m	0.025

Total Length: 5.00 ft Total Volume: 0.025 bbf

Num Fluid Samples: 0

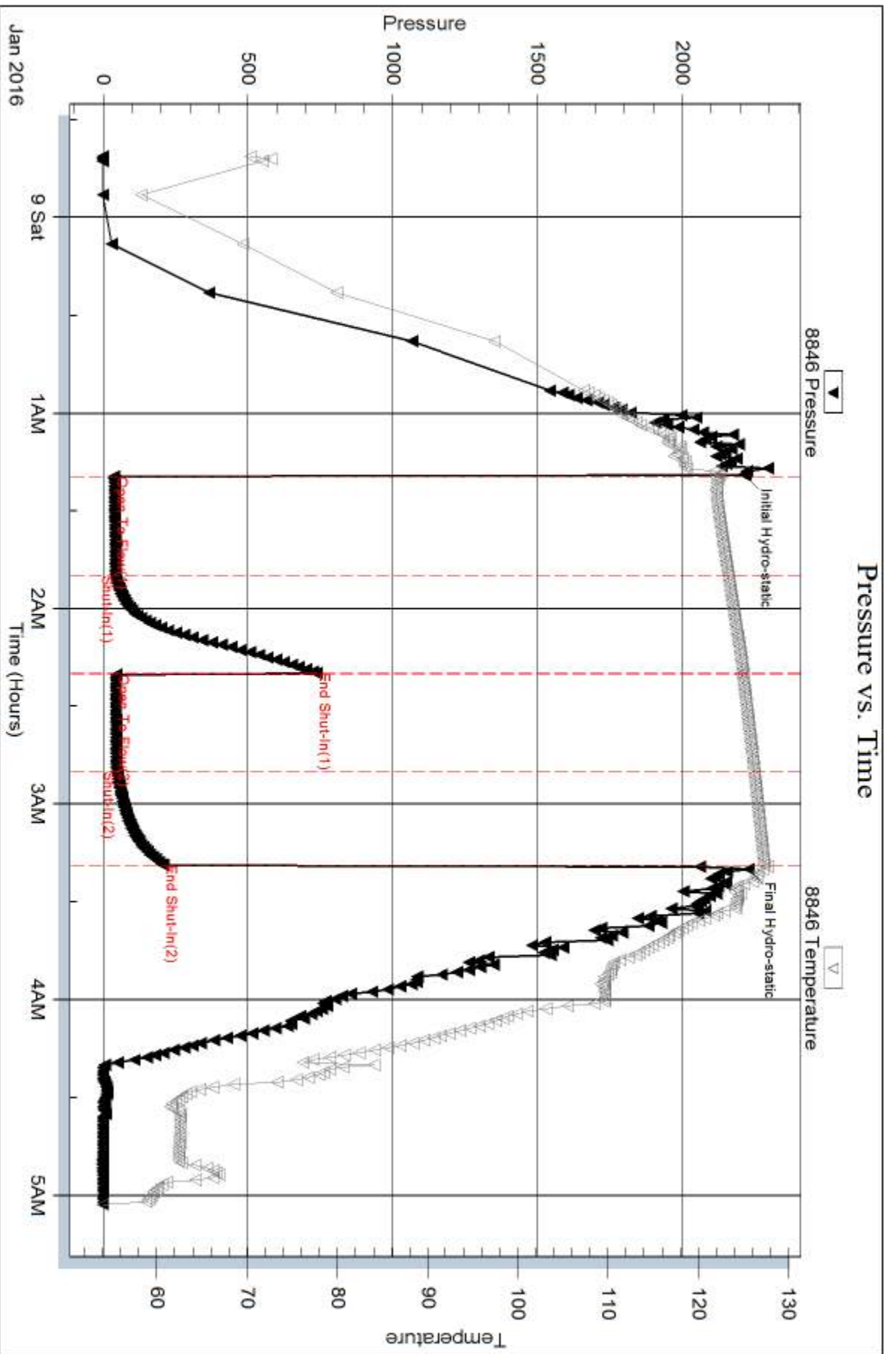
Num Gas Bombs: 0

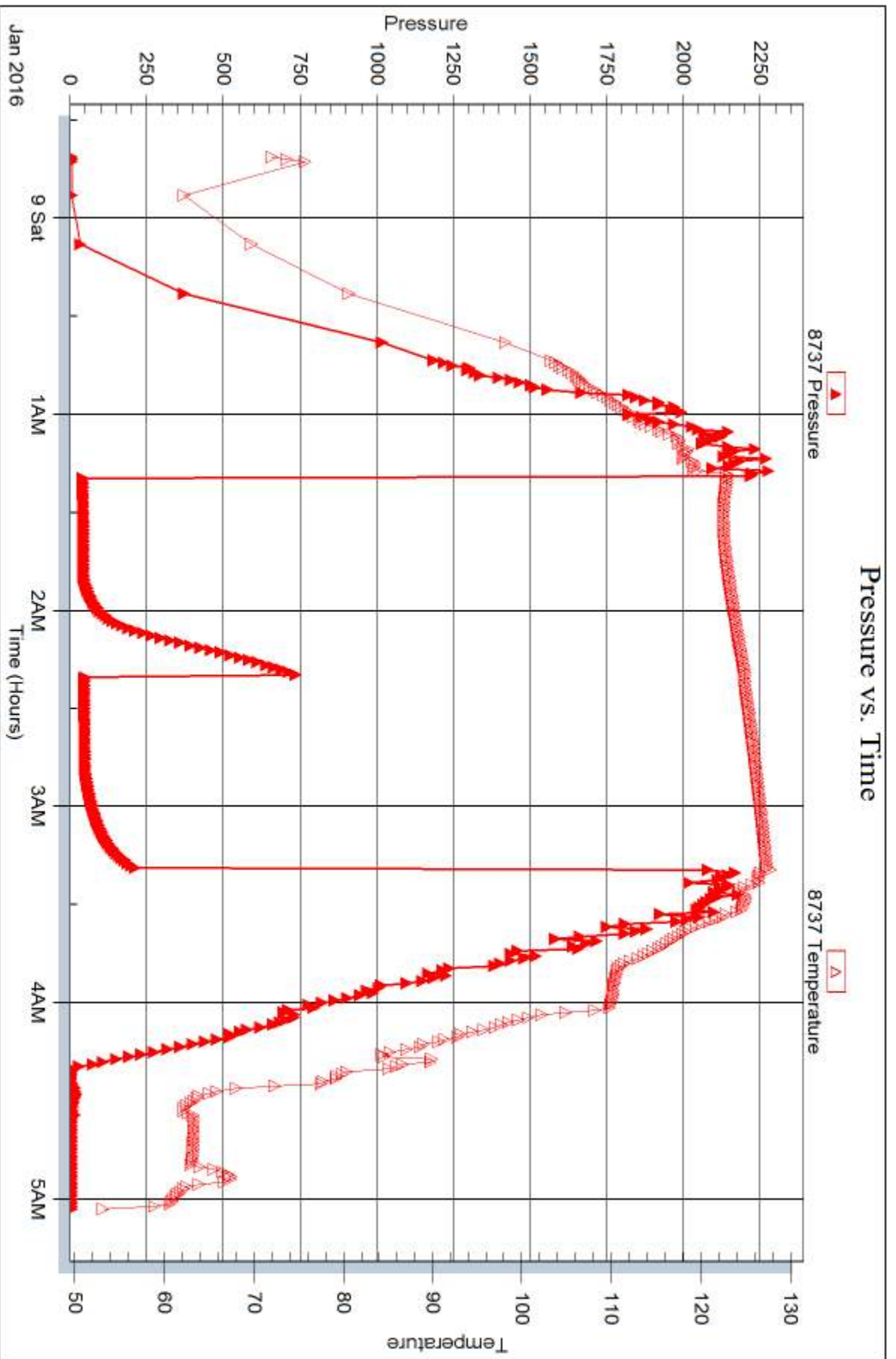
Serial #:

Laboratory Name:

Laboratory Location:

Recovery Comments:







TRILOBITE TESTING, INC.

DRILL STEM TEST REPORT

Val Energy Inc.
 125 N Market St
 STE 1710
 Wichita KS 67202
 ATTN: Harley Sales

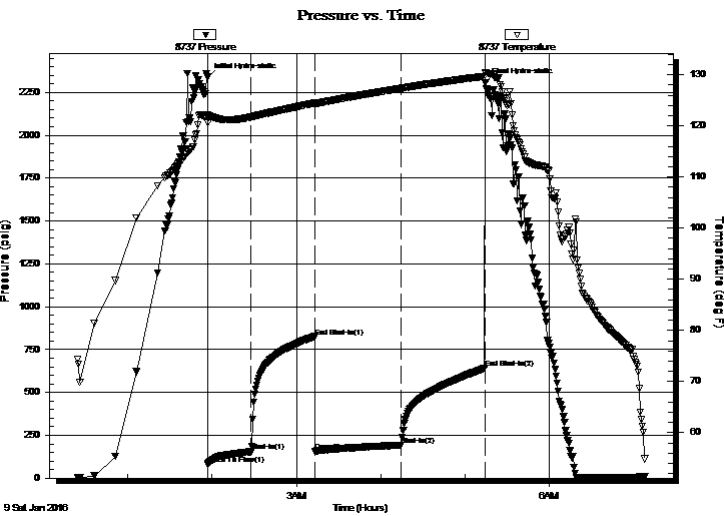
17-8-35 Thomas Co KS
Robert 1-17
 Job Ticket: 64559 **DST#: 6**
 Test Start: 2016.01.10 @ 00:24:15

GENERAL INFORMATION:

Formation: **Marmaton-Pawnee**
 Deviated: No Whipstock: ft (KB)
 Time Tool Opened: 01:57:00
 Time Test Ended: 07:08:15
 Interval: **4448.00 ft (KB) To 4560.00 ft (KB) (TVD)**
 Total Depth: 4560.00 ft (KB) (TVD)
 Hole Diameter: 7.88 inches Hole Condition: Fair
 Test Type: Conventional Bottom Hole (Reset)
 Tester: Mike Roberts
 Unit No: 65
 Reference Elevations: 3338.00 ft (KB)
 3333.00 ft (CF)
 KB to GR/CF: 5.00 ft

Serial #: 8737 Outside
 Press@RunDepth: 192.20 psig @ 4453.00 ft (KB) Capacity: 8000.00 psig
 Start Date: 2016.01.09 End Date: 2016.01.09 Last Calib.: 2016.01.10
 Start Time: 00:24:15 End Time: 07:08:15 Time On Btm: 2016.01.09 @ 01:56:45
 Time Off Btm: 2016.01.09 @ 05:14:30

TEST COMMENT: IF: Built to 7" blow
 IS: No return blow
 FF: Built to 4" blow
 FS: No return blow



PRESSURE SUMMARY

Time (Min.)	Pressure (psig)	Temp (deg F)	Annotation
0	2335.85	122.11	Initial Hydro-static
1	82.29	120.63	Open To Flow (1)
31	154.03	121.68	Shut-In(1)
76	825.42	124.45	End Shut-In(1)
77	158.40	124.18	Open To Flow (2)
138	192.20	127.31	Shut-In(2)
198	641.01	129.70	End Shut-In(2)
198	2306.63	130.44	Final Hydro-static

Recovery

Length (ft)	Description	Volume (bbl)
120.00	mcw 5% m 95% w	0.59
124.00	w cm 40% w 60% m	1.74

* Recovery from multiple tests

Gas Rates

Choke (inches)	Pressure (psig)	Gas Rate (MMcf/d)



**TRILOBITE
TESTING, INC**

DRILL STEM TEST REPORT

FLUID SUMMARY

Val Energy Inc.

17-8-35 Thomas Co KS

125 N Market St
STE 1710
Wichita KS 67202

Robert 1-17

Job Ticket: 64559

DST#: 6

ATTN: Harley Sales

Test Start: 2016.01.10 @ 00:24:15

Mud and Cushion Information

Mud Type: Gel Chem

Cushion Type:

Oil API:

0 deg API

Mud Weight: 10.00 lb/gal

Cushion Length:

ft

Water Salinity:

85000 ppm

Viscosity: 56.00 sec/qt

Cushion Volume:

bbbl

Water Loss: 7.97 in³

Gas Cushion Type:

Resistivity: 0.00 ohm.m

Gas Cushion Pressure:

psig

Salinity: 5000.00 ppm

Filter Cake: 1.00 inches

Recovery Information

Recovery Table

Length ft	Description	Volume bbbl
120.00	mcw 5%m 95%w	0.590
124.00	w cm 40%w 60%m	1.739

Total Length: 244.00 ft Total Volume: 2.329 bbl

Num Fluid Samples: 0

Num Gas Bombs: 0

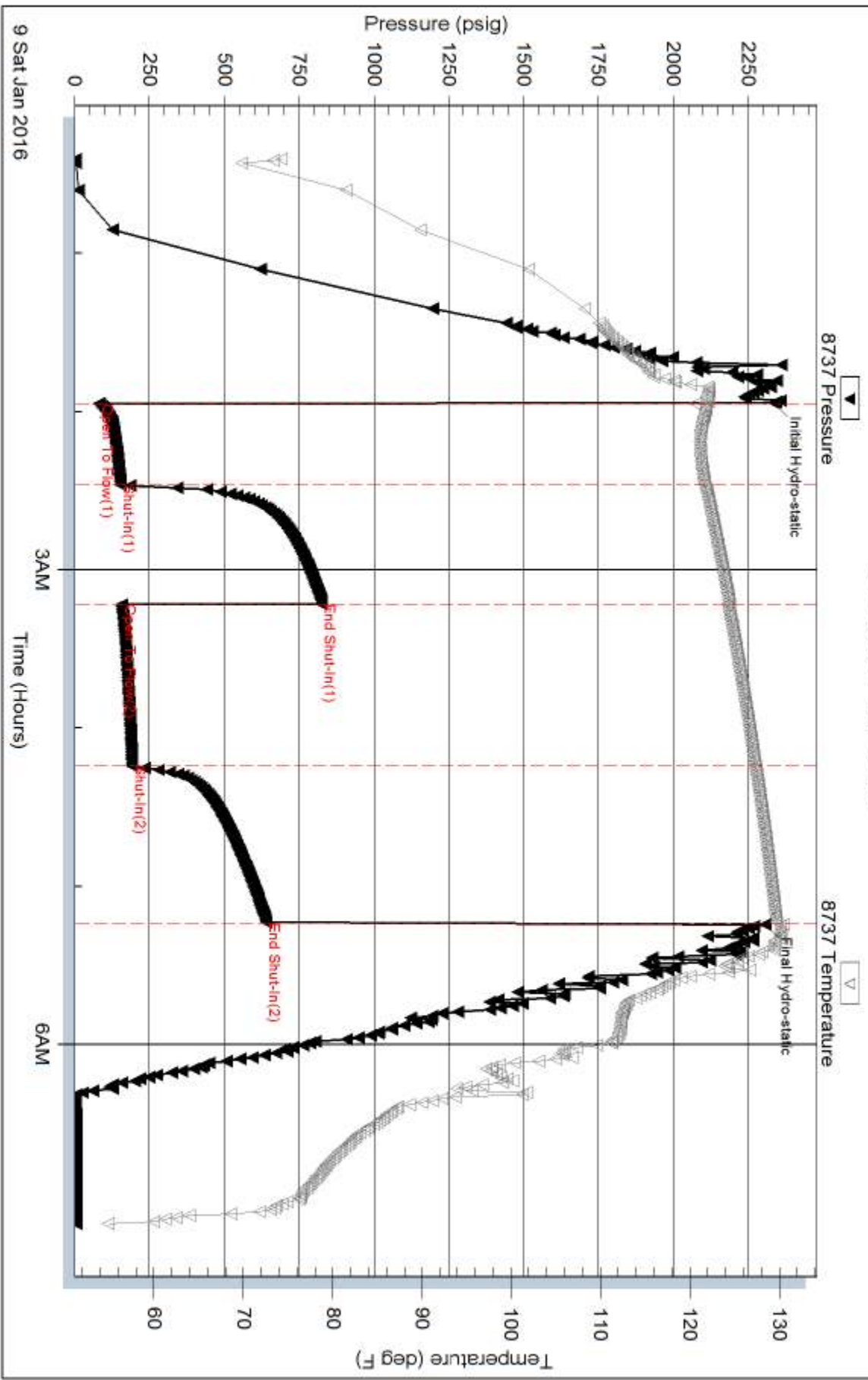
Serial #:

Laboratory Name:

Laboratory Location:

Recovery Comments: RW= .2@35.3*= 85000 ppm

Pressure vs. Time



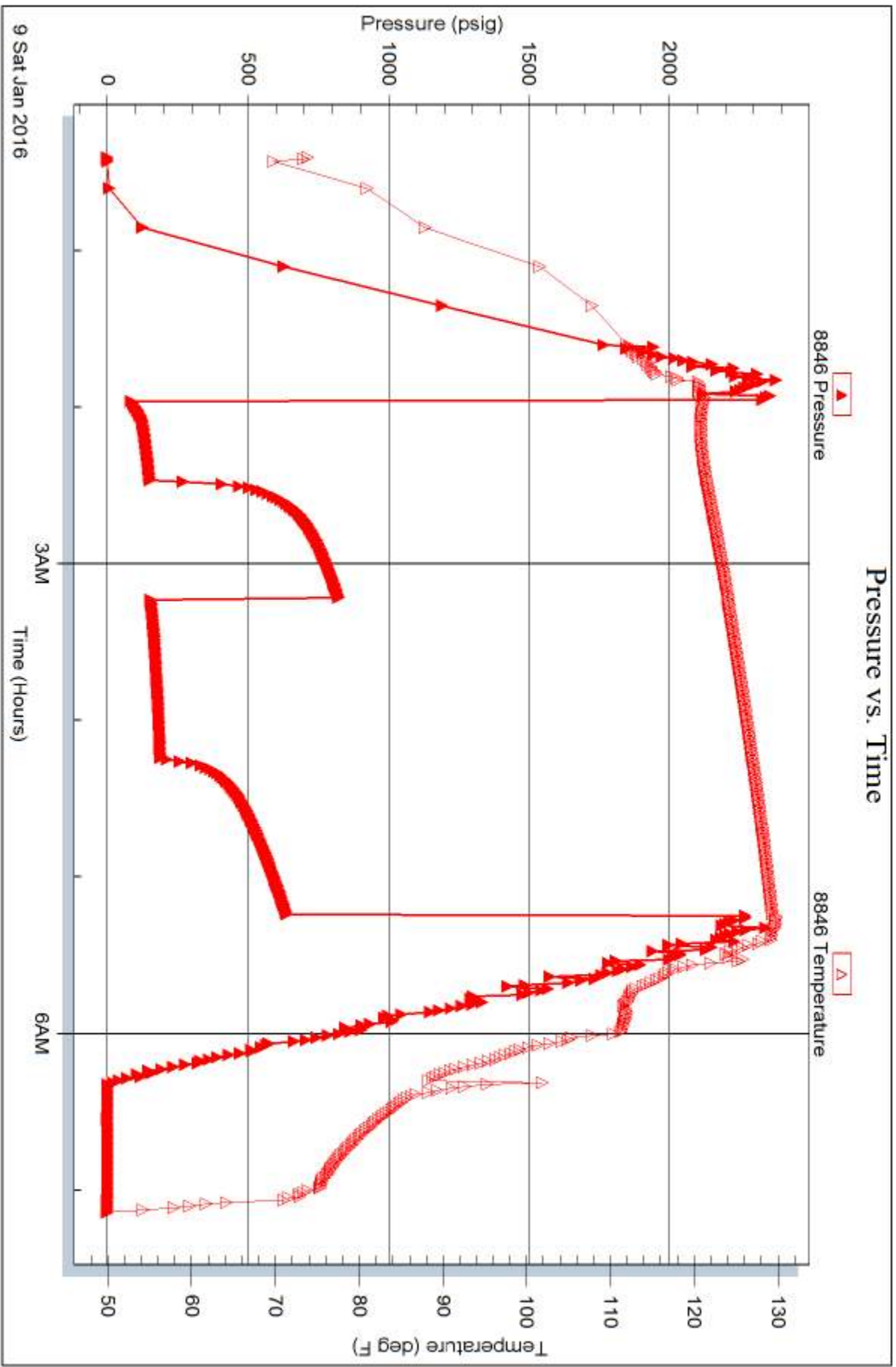
Serial #: 8846

Inside

Val Energy Inc.

Robert 1-17

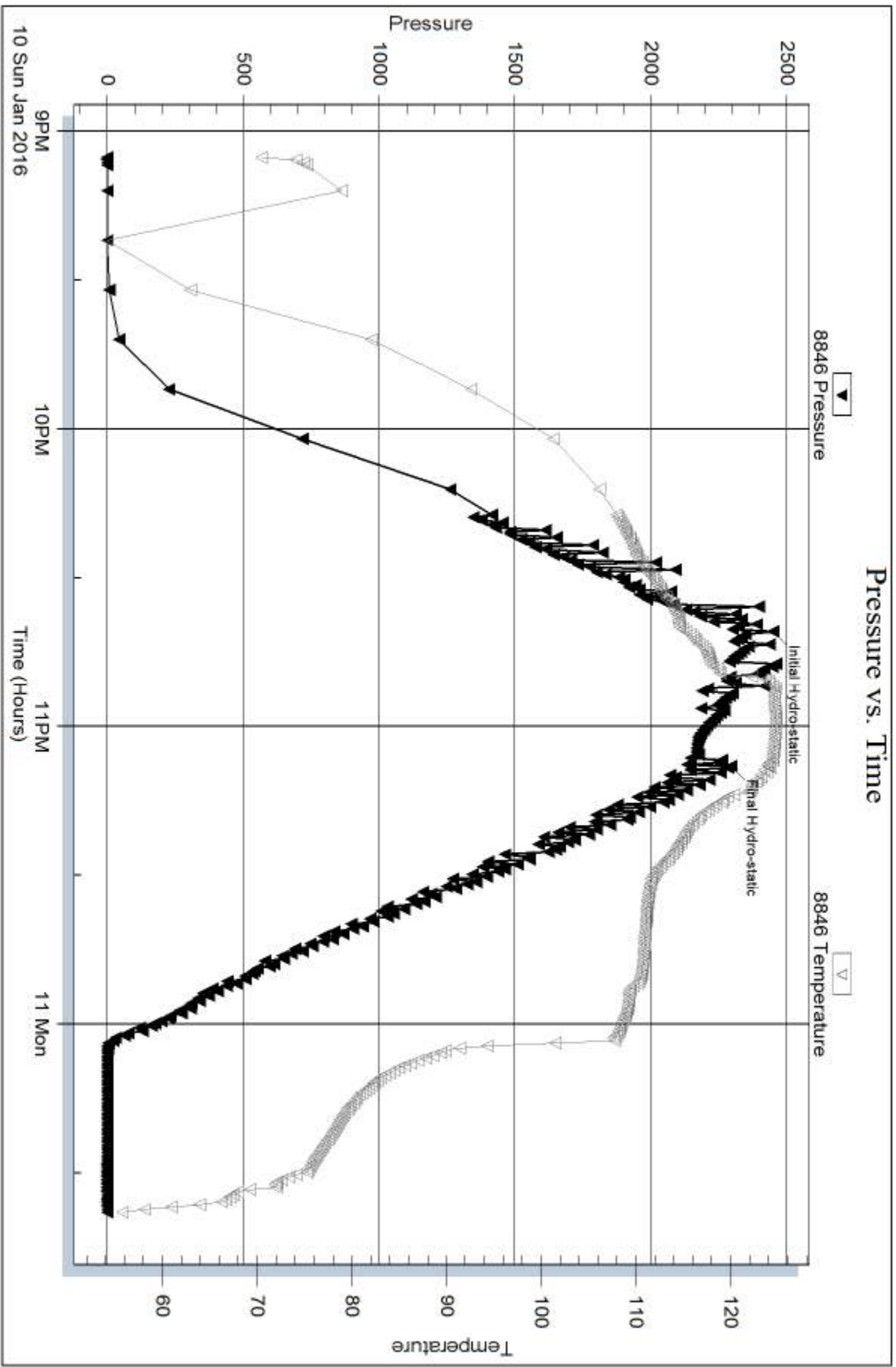
DST Test Number: 6



Trilobite Testing, Inc

Ref. No: 64559

Printed: 2016.01.10 @ 07:42:08





TRILOBITE TESTING, INC.

DRILL STEM TEST REPORT

Val Energy Inc.
 125 N Market St
 STE 1710
 Wichita KS 67202
 ATTN: Harley Sales

17-8-35 Thomas Co KS
Robert 1-17
 Job Ticket: 64561 **DST#: 8**
 Test Start: 2016.01.11 @ 01:18:15

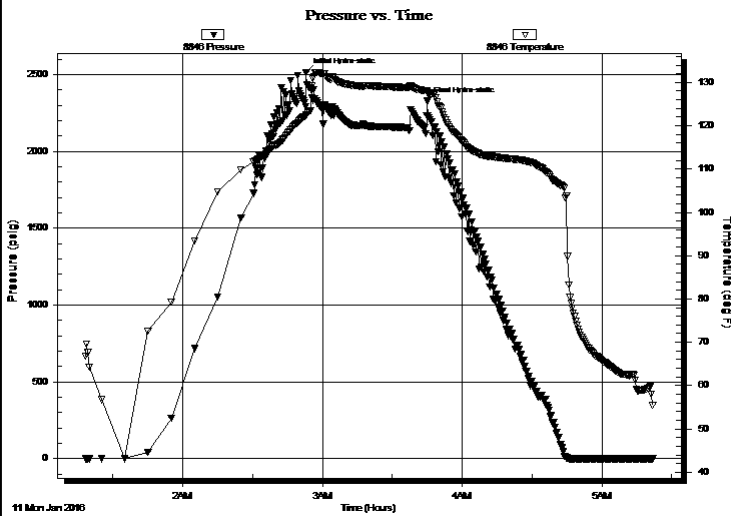
GENERAL INFORMATION:

Formation: **Myric Station Ft Sco**
 Deviated: No Whipstock: ft (KB)
 Time Tool Opened:
 Time Test Ended: 05:22:00
 Interval: **4560.00 ft (KB) To 4666.00 ft (KB) (TVD)**
 Total Depth: 4666.00 ft (KB) (TVD)
 Hole Diameter: 7.88 inches Hole Condition: Fair
 Test Type: Conventional Bottom Hole (Reset)
 Tester: Mike Roberts
 Unit No: 65
 Reference Elevations: 3338.00 ft (KB)
 3333.00 ft (CF)
 KB to GR/CF: 5.00 ft

Serial #: 8846

Press@RunDepth: psig @ ft (KB) Capacity: 8000.00 psig
 Start Date: 2016.01.11 End Date: 2016.01.11 Last Calib.: 2016.01.11
 Start Time: 01:18:15 End Time: 05:22:00 Time On Btm: 2016.01.11 @ 02:53:00
 Time Off Btm: 2016.01.11 @ 03:45:00

TEST COMMENT: IF:PACKER FAILURE
 IS:
 FF:
 FS:



PRESSURE SUMMARY

Time (Min.)	Pressure (psig)	Temp (deg F)	Annotation
0	2515.02	122.41	Initial Hydro-static
52	2327.85	127.78	Final Hydro-static

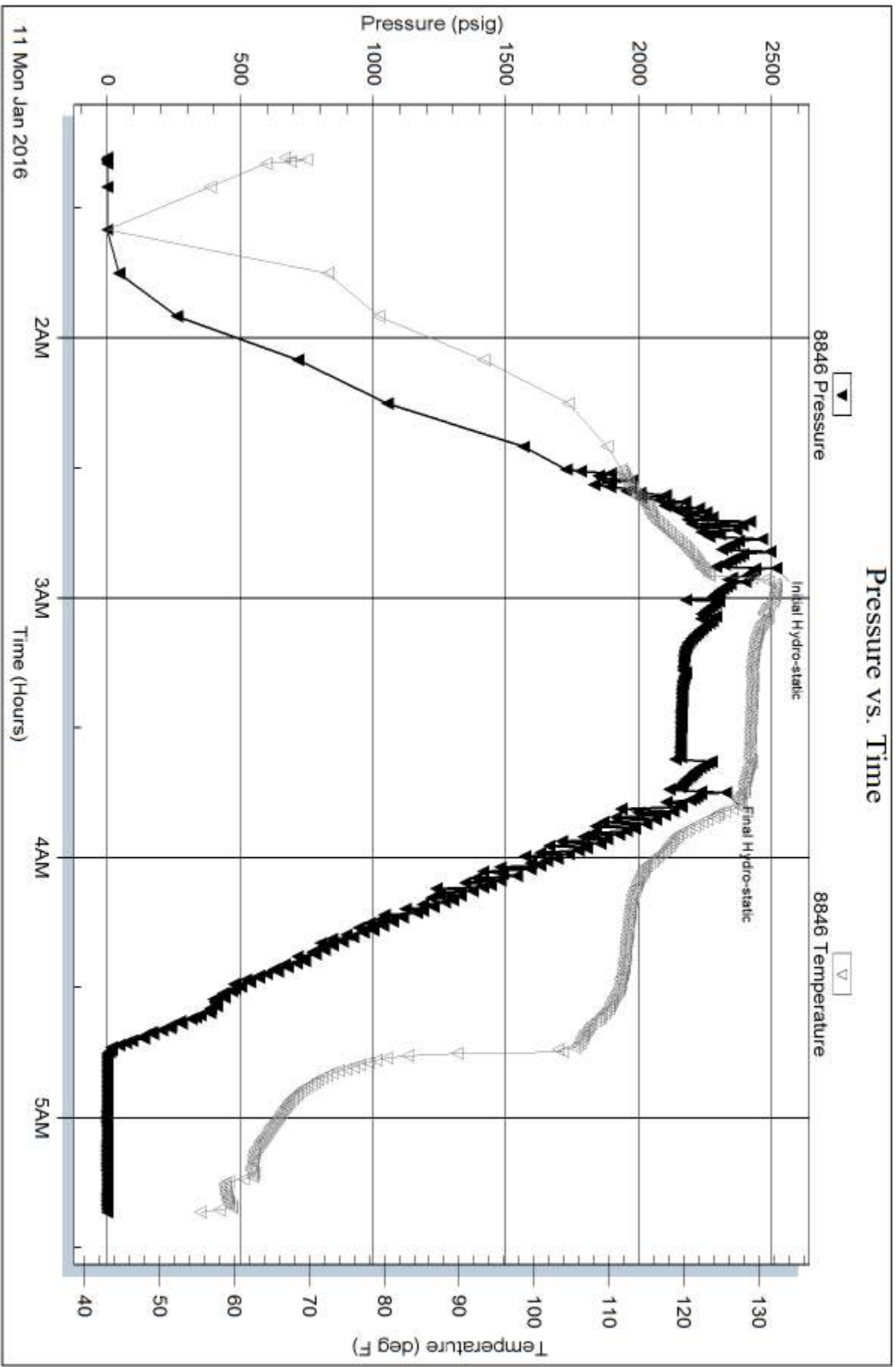
Recovery

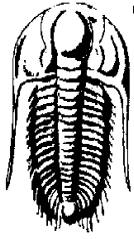
Length (ft)	Description	Volume (bbl)
244.00		2.33

* Recovery from multiple tests

Gas Rates

Choke (inches)	Pressure (psig)	Gas Rate (MMcf/d)





**TRILOBITE
TESTING, INC.**

DRILL STEM TEST REPORT

FLUID SUMMARY

Val Energy Inc.

17-8-35 Thomas Co KS

125 N Market St
STE 1710
Wichita KS 67202

Robert 1-17

Job Ticket: 64562

DST#: 9

ATTN: Harley Sales

Test Start: 2016.01.11 @ 12:37:15

Mud and Cushion Information

Mud Type: Gel Chem

Cushion Type:

Oil API:

0 deg API

Mud Weight: 9.00 lb/gal

Cushion Length:

ft

Water Salinity:

84000 ppm

Viscosity: 56.00 sec/qt

Cushion Volume:

bbbl

Water Loss: 9.58 in³

Gas Cushion Type:

Resistivity: 0.00 ohm.m

Gas Cushion Pressure:

psig

Salinity: 7000.00 ppm

Filter Cake: 1.00 inches

Recovery Information

Recovery Table

Length ft	Description	Volume bbl
306.00	mcw 5%m 95%w	3.199
124.00	mcw 30%m 70%w	1.739
248.00	w cm 10%w 90%m	3.479
1.00	free oil	0.014
0.00	GIP= 62	0.000

Total Length: 679.00 ft Total Volume: 8.431 bbl

Num Fluid Samples: 0

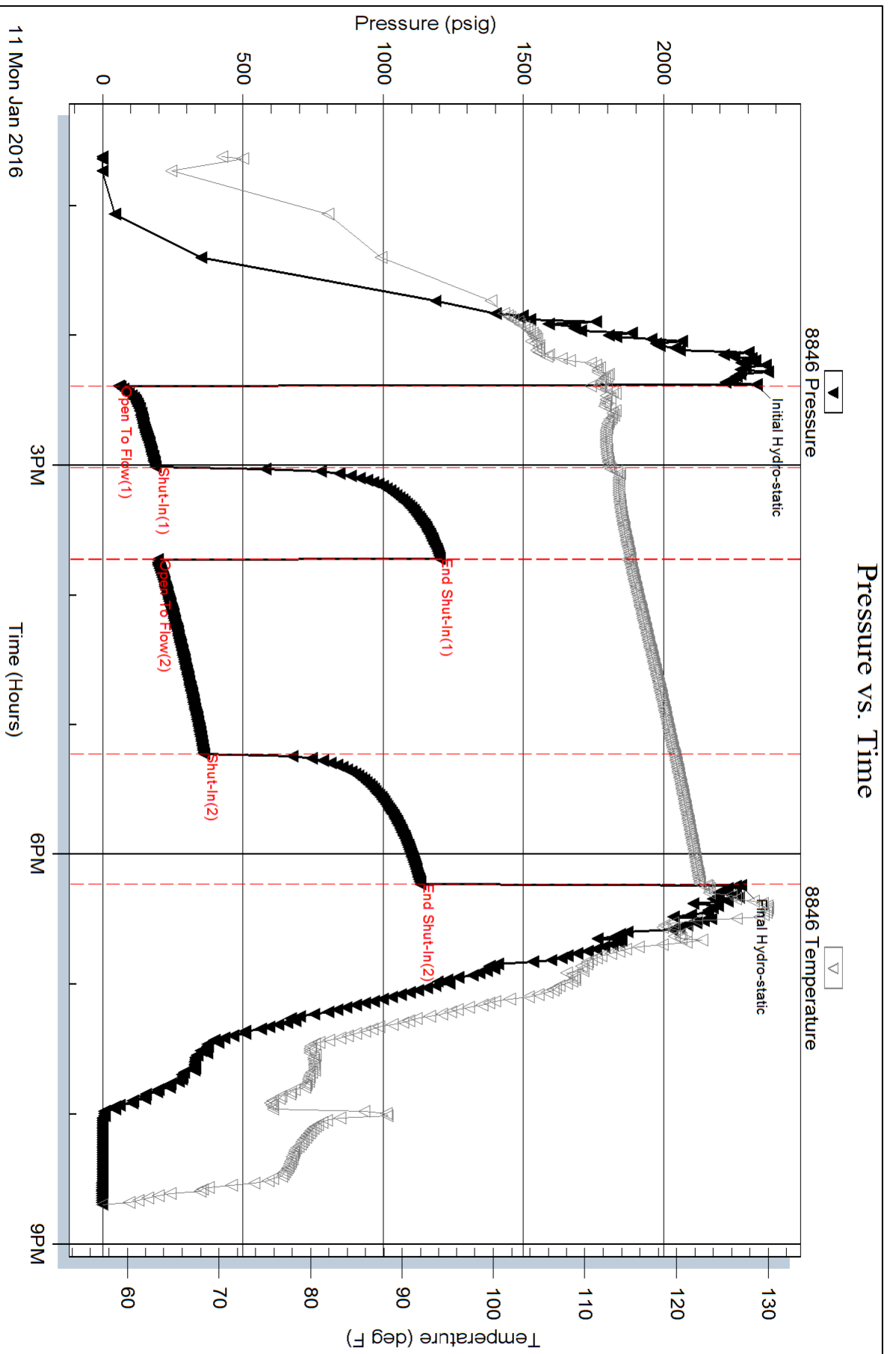
Num Gas Bombs: 0

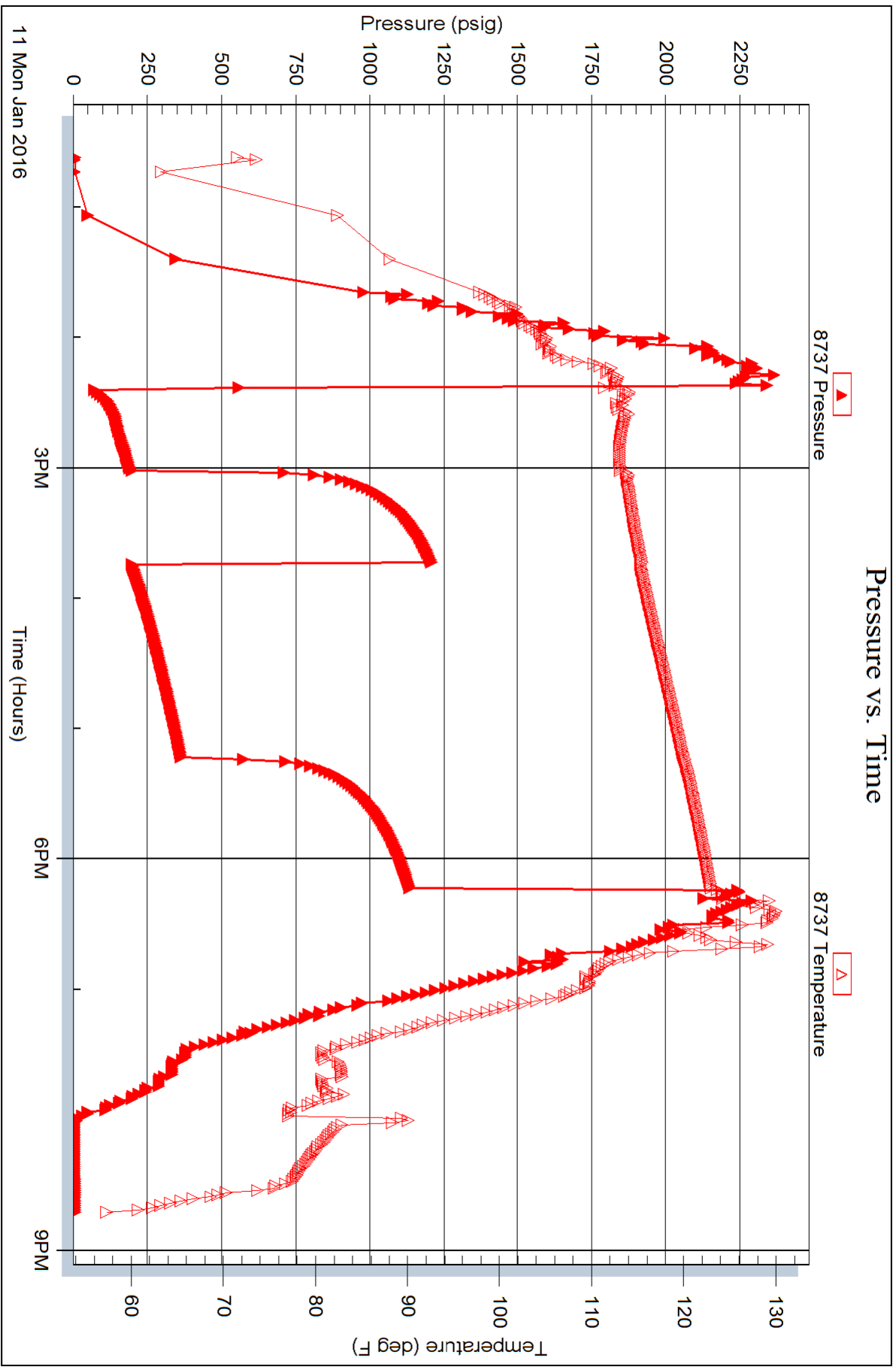
Serial #:

Laboratory Name:

Laboratory Location:

Recovery Comments: RW= .3@52.7= 84000 ppm







**TRILOBITE
TESTING, INC**

DRILL STEM TEST REPORT

Val Energy Inc.

17-8-35 Thomas Co KS

125 N Market St
STE 1710
Wichita KS 67202
ATTN: Harley Sales

Robert 1-17

Job Ticket: 64563

DST#: 10

Test Start: 2016.01.12 @ 07:45:15

GENERAL INFORMATION:

Formation: **Johnson**

Deviated: No Whipstock: ft (KB)

Time Tool Opened: 09:39:15

Time Test Ended: 15:57:00

Test Type: Conventional Bottom Hole (Reset)

Tester: Mike Roberts

Unit No: 65

Interval: 4668.00 ft (KB) To 4720.00 ft (KB) (TVD)

Reference Elevations: 3338.00 ft (KB)

Total Depth: 4720.00 ft (KB) (TVD)

3333.00 ft (CF)

Hole Diameter: 7.88 inches Hole Condition: Fair

KB to GR/CF: 5.00 ft

Serial #: 8846

Inside

Press@RunDepth: 167.97 psig @ 4673.00 ft (KB)

Capacity: 8000.00 psig

Start Date: 2016.01.12

End Date:

2016.01.12

Last Calib.:

2016.01.12

Start Time: 07:45:15

End Time:

15:57:00

Time On Btm:

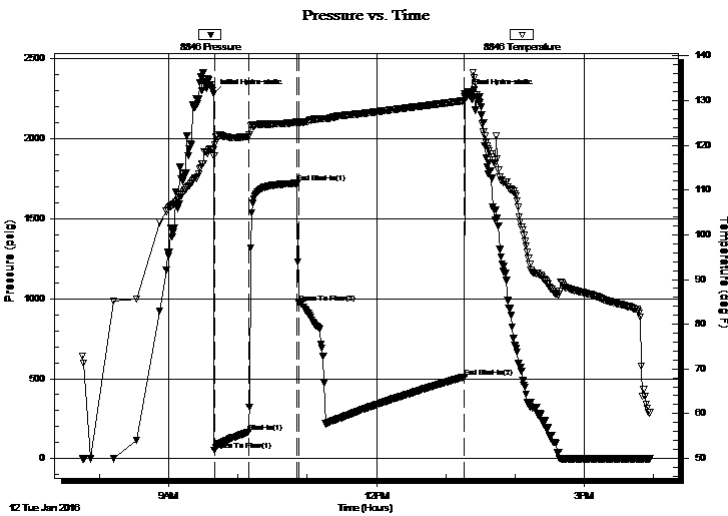
2016.01.12 @ 09:39:00

Time Off Btm:

2016.01.12 @ 13:16:30

TEST COMMENT: IF:BOB in 17 min.
IS:Return blow built to 4"
FF:BOB in 20 min.
FS:BOB in 24 min.

PRESSURE SUMMARY



Time (Min.)	Pressure (psig)	Temp (deg F)	Annotation
0	2281.60	118.98	Initial Hydro-static
1	52.72	117.71	Open To Flow (1)
30	167.97	122.00	Shut-In(1)
72	1722.35	125.16	End Shut-In(1)
74	971.03	125.12	Open To Flow (2)
218	511.51	130.00	End Shut-In(2)
218	2280.37	130.88	Final Hydro-static

Recovery

Length (ft)	Description	Volume (bbl)
0.00	806 GIP	0.00
120.00	mcgo 10%m 15%g 75%o	0.59
124.00	mcgo 5%m 10%g 85%o	1.74
992.00	gco 30%g 70%o	13.92

* Recovery from multiple tests

Gas Rates

Choke (inches)	Pressure (psig)	Gas Rate (MMcf/d)



**TRILOBITE
TESTING, INC**

DRILL STEM TEST REPORT

FLUID SUMMARY

Val Energy Inc.

17-8-35 Thomas Co KS

125 N Market St
STE 1710
Wichita KS 67202

Robert 1-17

Job Ticket: 64563

DST#: 10

ATTN: Harley Sales

Test Start: 2016.01.12 @ 07:45:15

Mud and Cushion Information

Mud Type: Gel Chem

Cushion Type:

Oil API:

23 deg API

Mud Weight: 9.00 lb/gal

Cushion Length:

ft

Water Salinity:

0 ppm

Viscosity: 67.00 sec/qt

Cushion Volume:

bbbl

Water Loss: 9.05 in³

Gas Cushion Type:

Resistivity: 0.00 ohm.m

Gas Cushion Pressure:

psig

Salinity: 5000.00 ppm

Filter Cake: 1.00 inches

Recovery Information

Recovery Table

Length ft	Description	Volume bbl
0.00	806 GIP	0.000
120.00	mcgo 10%m 15%g 75%o	0.590
124.00	mcgo 5%m 10%g 85%o	1.739
992.00	gco 30%g 70%o	13.915

Total Length: 1236.00 ft Total Volume: 16.244 bbl

Num Fluid Samples: 0

Num Gas Bombs: 0

Serial #:

Laboratory Name:

Laboratory Location:

Recovery Comments: API 21 @80 corrected to 23 @ 60

Serial #: 8846

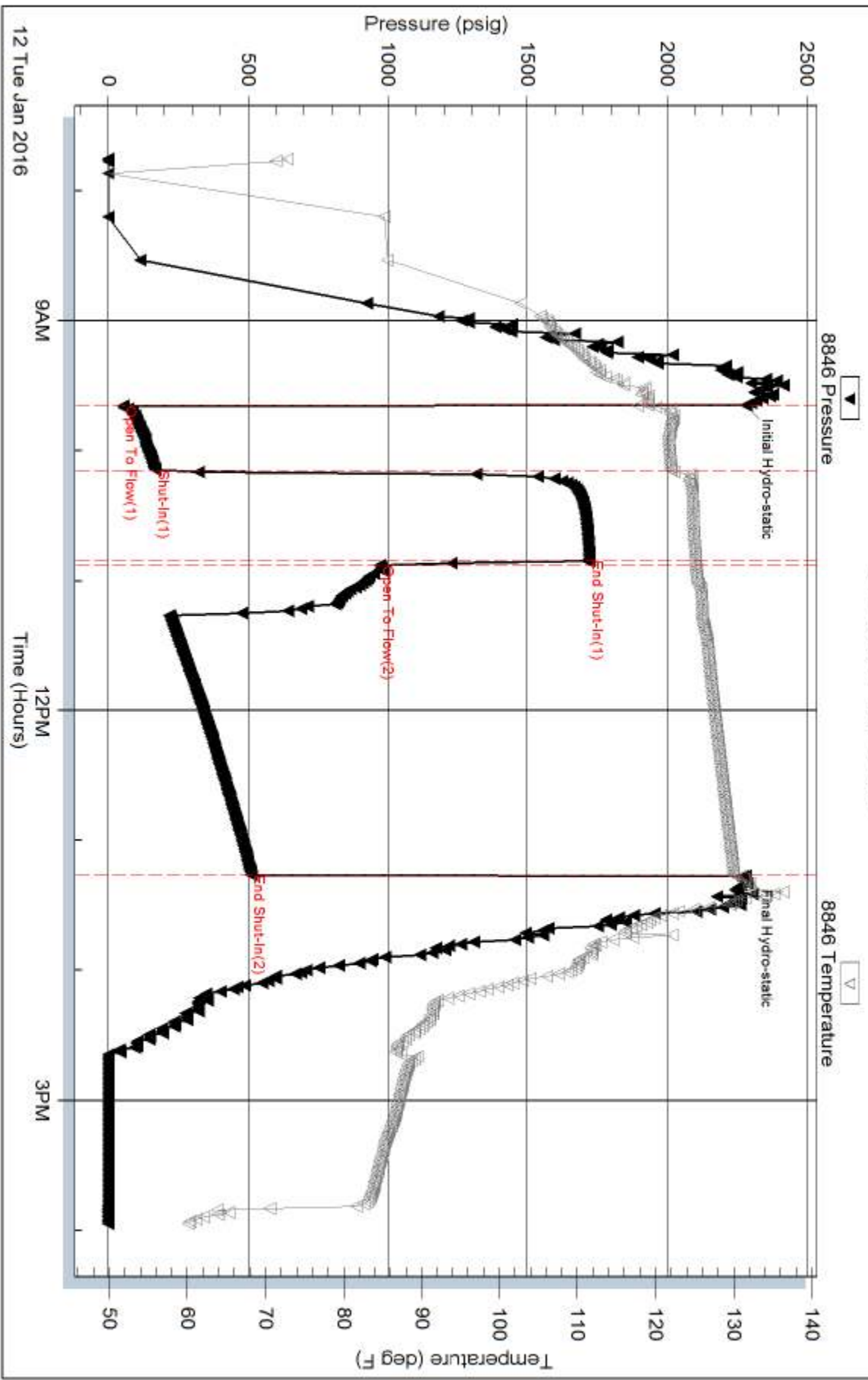
Inside

Val Energy Inc.

Robert 1-17

DST Test Number: 10

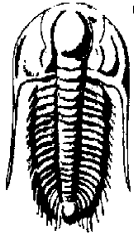
Pressure vs. Time



Tribble Testing, Inc

Ref. No: 64563

Printed: 2016.01.12 @ 16:37:26



**TRILOBITE
TESTING, INC.**

DRILL STEM TEST REPORT

Val Energy Inc.
125 N Market St
STE 1710
Wichita KS 67202
ATTN: Harley Sales

17-8-35 Thomas Co KS

Robert 1-17

Job Ticket: 64564

DST#: 11

Test Start: 2016.01.12 @ 19:52:15

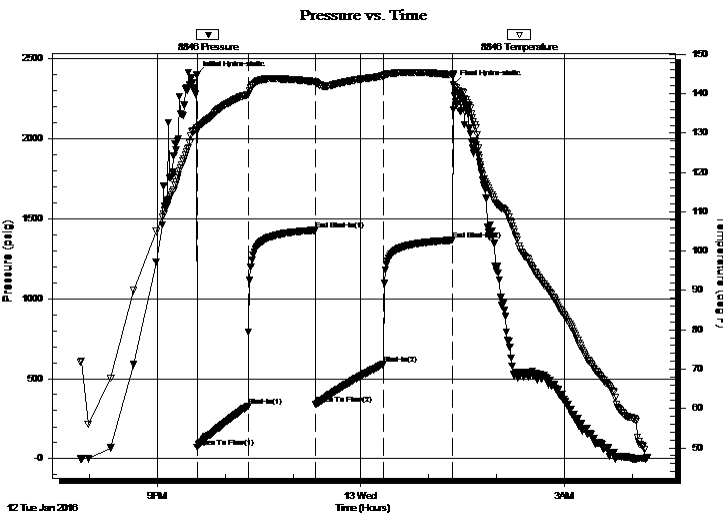
GENERAL INFORMATION:

Formation: **Johnson**
 Deviated: No Whipstock: ft (KB)
 Time Tool Opened: 21:35:15
 Time Test Ended: 04:13:00
 Interval: **4645.00 ft (KB) To 4720.00 ft (KB) (TVD)**
 Total Depth: 4720.00 ft (KB) (TVD)
 Hole Diameter: 7.88 inches Hole Condition: Fair
 Test Type: Conventional Bottom Hole (Reset)
 Tester: Mike Roberts
 Unit No: 65
 Reference Elevations: 3338.00 ft (KB)
 3333.00 ft (CF)
 KB to GR/CF: 5.00 ft

Serial #: 8846

Press @ Run Depth: 589.24 psig @ ft (KB) Capacity: 8000.00 psig
 Start Date: 2016.01.12 End Date: 2016.01.13 Last Calib.: 2016.01.13
 Start Time: 19:52:15 End Time: 04:13:00 Time On Btm: 2016.01.12 @ 21:35:00
 Time Off Btm: 2016.01.13 @ 01:22:00

TEST COMMENT: IF:BOB in 3 min
 IS:BOB in 21 min.
 FF:BOB in 1 min.
 FS:Return blow built to 4"



PRESSURE SUMMARY

Time (Min.)	Pressure (psig)	Temp (deg F)	Annotation
0	2398.30	131.42	Initial Hydro-static
1	70.95	130.72	Open To Flow (1)
46	328.92	139.72	Shut-In(1)
105	1428.65	143.00	End Shut-In(1)
106	339.76	142.68	Open To Flow (2)
165	589.24	144.50	Shut-In(2)
226	1366.40	144.77	End Shut-In(2)
227	2338.93	144.58	Final Hydro-static

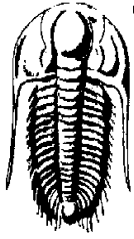
Recovery

Length (ft)	Description	Volume (bbl)
120.00	mcgo 10%m 15%g 75%o	0.59
248.00	mcgo 5%m 10%g 85%o	3.48
1086.00	gco 20%g 80%o	15.23
0.00	GIP= 372 ft.	0.00

Gas Rates

	Choke (inches)	Pressure (psig)	Gas Rate (MMcf/d)

* Recovery from multiple tests



**TRILOBITE
TESTING, INC.**

DRILL STEM TEST REPORT

Val Energy Inc.
125 N Market St
STE 1710
Wichita KS 67202
ATTN: Harley Sales

17-8-35 Thomas Co KS

Robert 1-17

Job Ticket: 64564

DST#: 11

Test Start: 2016.01.12 @ 19:52:15

GENERAL INFORMATION:

Formation: **Johnson**
 Deviated: No Whipstock: ft (KB)
 Time Tool Opened: 21:35:15
 Time Test Ended: 04:13:00
 Interval: **4645.00 ft (KB) To 4720.00 ft (KB) (TVD)**
 Total Depth: 4720.00 ft (KB) (TVD)
 Hole Diameter: 7.88 inches Hole Condition: Fair
 Test Type: Conventional Bottom Hole (Reset)
 Tester: Mike Roberts
 Unit No: 65
 Reference Elevations: 3338.00 ft (KB)
 3333.00 ft (CF)
 KB to GR/CF: 5.00 ft

Serial #: 8737

Press @ Run Depth: psig @ ft (KB) Capacity: 8000.00 psig
 Start Date: 2016.01.12 End Date: 2016.01.13 Last Calib.: 2016.01.13
 Start Time: 19:52:15 End Time: 04:13:00 Time On Btm:
 Time Off Btm:

TEST COMMENT: IF:BOB in 3 min
 IS:BOB in 21 min.
 FF:BOB in 1 min.
 FS:Return blow built to 4"

PRESSURE SUMMARY

Time (Min.)	Pressure (psig)	Temp (deg F)	Annotation
-------------	-----------------	--------------	------------

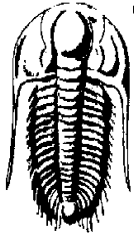
Recovery

Length (ft)	Description	Volume (bbl)
120.00	mcgo 10%m 15%g 75%o	0.59
248.00	mcgo 5%m 10%g 85%o	3.48
1086.00	gco 20%g 80%o	15.23
0.00	GIP= 372 ft.	0.00

Gas Rates

	Choke (inches)	Pressure (psig)	Gas Rate (MMcf/d)
--	----------------	-----------------	-------------------

* Recovery from multiple tests



**TRILOBITE
TESTING, INC.**

DRILL STEM TEST REPORT

FLUID SUMMARY

Val Energy Inc.

17-8-35 Thomas Co KS

125 N Market St
STE 1710
Wichita KS 67202

Robert 1-17

Job Ticket: 64564

DST#: 11

ATTN: Harley Sales

Test Start: 2016.01.12 @ 19:52:15

Mud and Cushion Information

Mud Type: Gel Chem

Cushion Type:

Oil API:

23 deg API

Mud Weight: 9.00 lb/gal

Cushion Length:

ft

Water Salinity:

0 ppm

Viscosity: 58.00 sec/qt

Cushion Volume:

bbbl

Water Loss: 9.58 in³

Gas Cushion Type:

Resistivity: 0.00 ohm.m

Gas Cushion Pressure:

psig

Salinity: 7000.00 ppm

Filter Cake: 1.00 inches

Recovery Information

Recovery Table

Length ft	Description	Volume bbl
120.00	mcgo 10%m 15%g 75%o	0.590
248.00	mcgo 5%m 10%g 85%o	3.479
1086.00	gco 20%g 80%o	15.234
0.00	GIP= 372 ft.	0.000

Total Length: 1454.00 ft Total Volume: 19.303 bbl

Num Fluid Samples: 0

Num Gas Bombs: 0

Serial #:

Laboratory Name:

Laboratory Location:

Recovery Comments: API 20 @ 90 corrected to 23

