

15-163-20928

State Geological Survey
KANSAS DRILLERS LOG

IMPORTANT
 Kans. Geo. Survey request samples on this well.

S. 7 T. 9 R. 16 ^E/_W
 Loc. 640' FNL & 440' FWL SW
 County Rooks

API No. 15 — 163 — 20,928
 County Number

Operator
The Two Way Oil Co.

Address
407 South Main Plainville, Kansas 67663

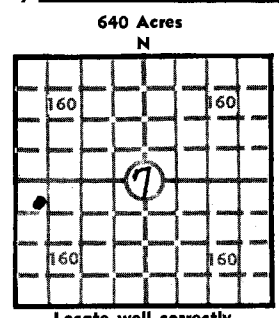
Well No. #2 Lease Name Hutton

Footage Location
640 feet from (N) (S) line 2000 4820 feet from (E) (W) line 440

Principal Contractor Laurbanco Geologist Jerry Green

Spud Date 6/12-79 Total Depth 3425 P.B.T.D. 3405

Date Completed 6/18-1979 Oil Purchaser M.R.P.



640 Acres
 N
 Elev.: Gr. 1990
 DF 1993 KB 1995

CASING RECORD

Report of all strings set — surface, intermediate, production, etc.

Purpose of string	Size hole drilled	Size casing set (in O.D.)	Weight lbs/ft.	Setting depth	Type cement	Sacks	Type and percent additives
Surface	12 1/4"	8 5/8	20#	169'	Common	100	3/2 CC 270 Jel
Long String	7 7/8"	4 1/2	10 1/2	3424	Common	130	10% Salt

LINER RECORD

PERFORATION RECORD

Top, ft.	Bottom, ft.	Sacks cement	Shots per ft.	Size & type	Depth interval
			2	3/8"	3157-60
			2	3/8"	3236-40
			2	3/8"	3295-3304
			2	3/8"	3313-15
					3320-25 3345-48

ACID, FRACTURE, SHOT, CEMENT SQUEEZE RECORD

Amount and kind of material used	Depth interval treated
2000 Gal of 15% Reg Acid	from 3295 to 3348
500 Gal of 15% Reg Acid	from 3236 to 3240
500 Gal of 15% Reg Acid	from 3157 to 3160

INITIAL PRODUCTION

Date of first production Aug 27-1979 Producing method (flowing, pumping, gas lift, etc.) Pumping

RATE OF PRODUCTION PER 24 HOURS	Oil <u>6</u> bbls.	Gas <u>12</u> MCF	Water <u>12</u> bbls.	Gas-oil ratio
---------------------------------	--------------------	-------------------	-----------------------	---------------

Disposition of gas (vented, used on lease or sold) Vented Producing interval (s) 3157 to 3348

INSTRUCTIONS: As provided in KCC Rule 82-2-125, within 90 days after completion of a well, one completed copy of this Drillers Log shall be transmitted to the State Geological Survey of Kansas, 4150 Monroe Street, Wichita, Kansas 67209. Copies of this form are available from the Conservation Division, State Corporation Commission, 3830 So. Meridian (P.O. Box 17027), Wichita, Kansas 66217. Phone AC 316-522-2206. If confidential custody is desired, please note Rule 82-2-125. Drillers Logs will be on open file in the Oil and Gas Division, State Geological Survey of Kansas, Lawrence, Kansas 66044.

Operator

DESIGNATE TYPE OF COMP.: OIL, GAS, DRY HOLE, SWDW, ETC.:

Well No.

2

Lease Name

Hutton

S 7 T 9 R 16 W

WELL LOG

Show all important zones of porosity and contents thereof; cored intervals, and all drill-stem tests, including depth interval tested, cushion used, time tool open, flowing and shut-in pressures, and recoveries.

SHOW GEOLOGICAL MARKERS, LOGS RUN, OR OTHER DESCRIPTIVE INFORMATION.

FORMATION DESCRIPTION, CONTENTS, ETC.	TOP	BOTTOM	NAME	DEPTH
No tests were taken on this well #2			Topeka	2877 - 882
			Heebner	3096 - 1101
			Toronto	3116 - 1121
			L.K.C.	3136 - 1141
			L.K.C. Base	3380 - 1285
			T.D.	3425 - 1430

USE ADDITIONAL SHEETS, IF NECESSARY, TO COMPLETE WELL RECORD.

Date Received

Thomas E. Brown
Signature

D. Pastner
Title

11/25-1979
Date

9688G

State Geological Survey
WICHITA, BRANCH
MAY 8 0 RECD

LAWBANCO DRILLING, INC.

Natoma, Kansas 67651

R. L. Finnesy, Drilling Superintendent

207 SW 8th Street

Plainville, Kansas 67663

7-9-16ⁿ

DRILLERS LOG

Hutton # 2

0 to 169	Sand and Blue Shale
169 to 800	Sand and Shale
800 to 1000	Sand
1000 to 1251	Sand and Shale
1251 to 1288	Anhy
1288 to 2000	Sand and Shale
2000 to 2500	Shaled Shells
2500 to 2900	Shaled Lime
2900 to 3200	Shaled Lime
3200 to 3300	Limed Shale
3300 to 3425	Limed Shale Rtd

RECEIVED
STATE CORPORATION COMMISSION
JUL 13 1979
CONSERVATION DIVISION
Wichita, Kansas

640 from North line 440 from West line SW Sec. 7 Twp. 9 Rge. 16
Rooks County, Kansas

RECEIVED
STATE CORPORATION COMMISSION
JUL 10 1979
CONSERVATION DIVISION
Wichita, Kansas