



DRILL STEM TEST REPORT

Prepared For: **Murfin Drilling Co**

250 N Water Ste 300
Wichita KS 67202

ATTN: Brad Rine

5 9S18W Rooks KS

Rosticil # 1-5

Start Date: 2006.06.12 @ 11:55:35

End Date: 2006.06.12 @ 19:56:50

Job Ticket #: 25383 DST #: 1

Trilobite Testing, Inc

PO Box 362 Hays, KS 67601

ph: 785-625-4778 fax: 785-625-5620

Murfin Drilling Co

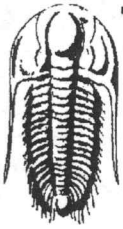
Rosticil # 1-5

5 9S18W Rooks KS

DST # 1

Oread

2006.06.12



**TRILOBITE
TESTING, INC.**

DRILL STEM TEST REPORT

TOOL DIAGRAM

Murfin Drilling Co
250 N Water Ste 300
Wichita KS 67202

ATTN: Brad Rine

Rosticil # 1-5
5 9S18W Rooks KS
Job Ticket: 25383 **DST#: 1**
Test Start: 2006.06.12 @ 11:55:35

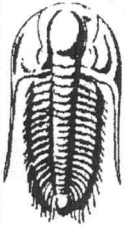
Tool Information

Drill Pipe:	Length: 3010.00 ft	Diameter: 3.80 inches	Volume: 42.22 bbl	Tool Weight:	2000.00 lb
Heavy Wt. Pipe:	Length: 0.00 ft	Diameter: 2.25 inches	Volume: 0.00 bbl	Weight set on Packer:	30000.00 lb
Drill Collar:	Length: 155.00 ft	Diameter: 2.25 inches	Volume: 0.76 bbl	Weight to Pull Loose:	36000.00 lb
			<u>Total Volume: 42.98 bbl</u>	Tool Chased	0.00 ft
Drill Pipe Above KB:	16.00 ft			String Weight: Initial	32000.00 lb
Depth to Top Packer:	3171.00 ft			Final	32000.00 lb
Depth to Bottom Packer:	ft				
Interval between Packers:	57.00 ft				
Tool Length:	79.00 ft				
Number of Packers:	2	Diameter: 6.75 inches			

Tool Comments:

Tool Description	Length (ft)	Serial No.	Position	Depth (ft)	Accum. Lengths
Shut In Tool	5.00			3154.00	
Hydraulic tool	5.00			3159.00	
Safety Joint	2.00			3161.00	
Packer	5.00			3166.00	22.00 Bottom Of Top Packer
Packer	5.00			3171.00	
Stubb	1.00			3172.00	
Change Over Sub	1.00			3173.00	
Blank Spacing	31.00			3204.00	
Change Over Sub	1.00			3205.00	
Recorder	0.00	6672	Inside	3205.00	
Perforations	20.00			3225.00	
Recorder	0.00	11020	Inside	3225.00	
Bullnose	3.00			3228.00	57.00 Bottom Packers & Anchor

Total Tool Length: 79.00



TRILOBITE
TESTING, INC.

DRILL STEM TEST REPORT

FLUID SUMMARY

Murfin Drilling Co

Rosticil # 1-5

250 N Water Ste 300
Wichita KS 67202

5 9S18W Rooks KS

Job Ticket: 25383

DST#: 1

ATTN: Brad Rine

Test Start: 2006.06.12 @ 11:55:35

Mud and Cushion Information

Mud Type: Gel Chem

Cushion Type:

Oil API:

deg API

Mud Weight: 9.00 lb/gal

Cushion Length:

ft

Water Salinity:

ppm

Viscosity: 50.00 sec/qt

Cushion Volume:

bbbl

Water Loss: 6.69 in³

Gas Cushion Type:

Resistivity: ohm.m

Gas Cushion Pressure:

psig

Salinity: ppm

Filter Cake: inches

Recovery Information

Recovery Table

Length ft	Description	Volume bbl
130.00	O Spk M	0.639

Total Length: 130.00 ft

Total Volume: 0.639 bbl

Num Fluid Samples: 0

Num Gas Bombs: 0

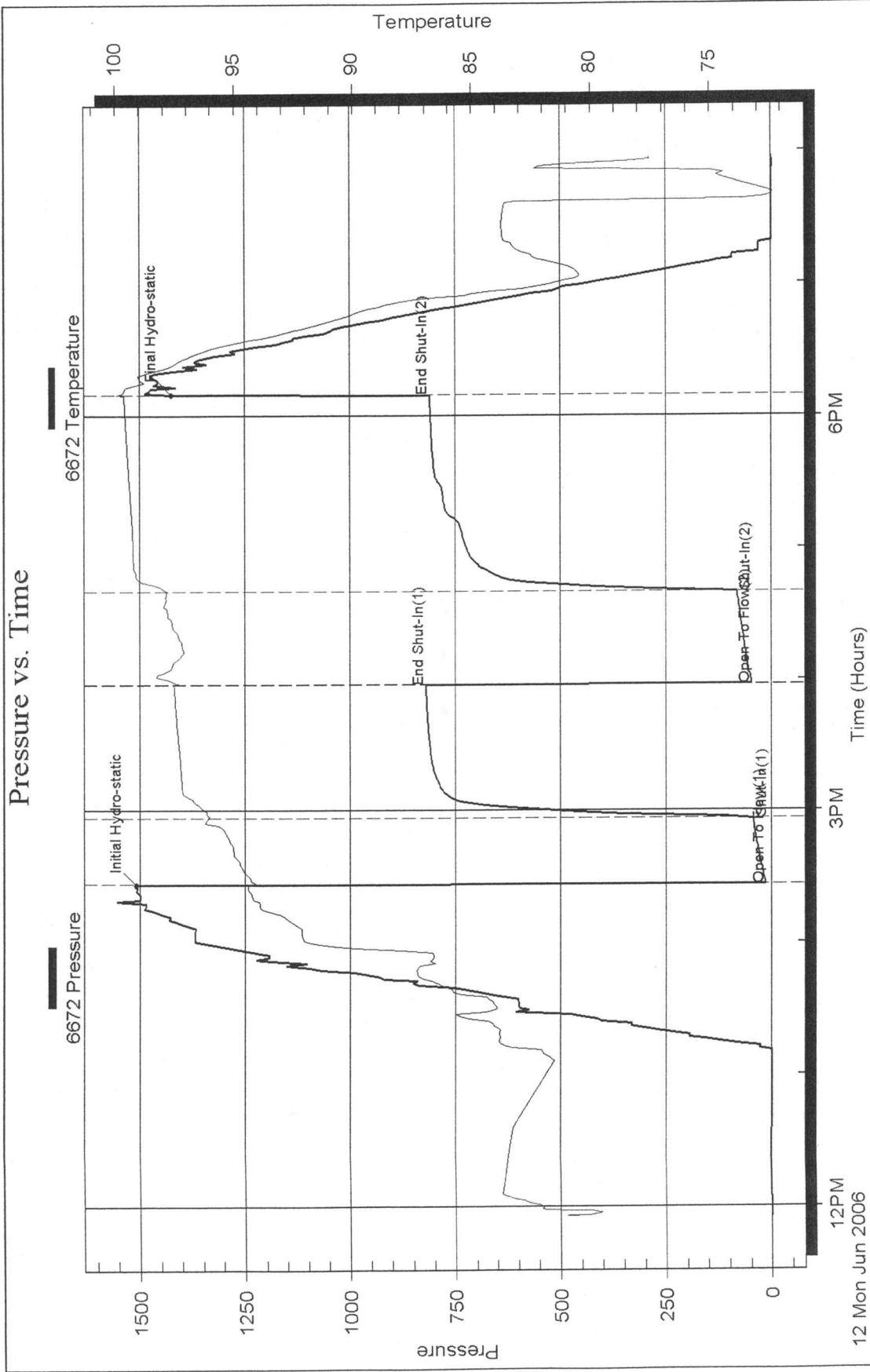
Serial #:

Laboratory Name:

Laboratory Location:

Recovery Comments:

Pressure vs. Time





DRILL STEM TEST REPORT

Prepared For: **Murfin Drilling Co**

250 N Water Ste 300
Wichita KS 67202

ATTN: Brad Rine

5 9S18W Rooks KS

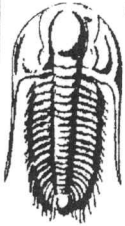
Rosticil # 1-5

Start Date: 2006.06.13 @ 06:03:41

End Date: 2006.06.13 @ 14:43:11

Job Ticket #: 25384 DST #: 2

Trilobite Testing, Inc
PO Box 362 Hays, KS 67601
ph: 785-625-4778 fax: 785-625-5620



**TRILOBITE
TESTING, INC.**

DRILL STEM TEST REPORT

Murfin Drilling Co
250 N Water Ste 300
Wichita KS 67202
ATTN: Brad Rine

Rosticil # 1-5

5 9S18W Rooks KS

Job Ticket: 25384

DST#: 2

Test Start: 2006.06.13 @ 06:03:41

GENERAL INFORMATION:

Formation: **Tor,L,Kc A-D**
Deviated: No Whipstock: ft (KB)
Time Tool Opened: 07:48:26
Time Test Ended: 14:43:11

Test Type: Conventional Bottom Hole
Tester: Joe
Unit No: 22

Interval: **3201.00 ft (KB) To 3310.00 ft (KB) (TVD)**
Total Depth: 3310.00 ft (KB) (TVD)
Hole Diameter: 7.80 inches Hole Condition: Good

Reference Elevations: 2068.00 ft (KB)
2063.00 ft (CF)
KB to GR/CF: 5.00 ft

Serial #: 6672

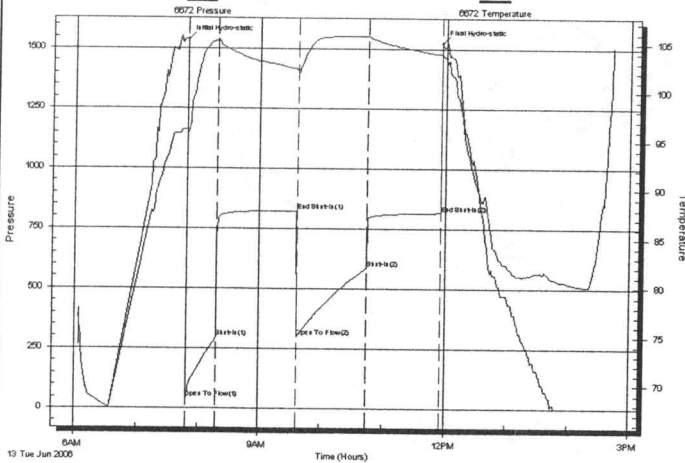
Inside

Press@RunDepth: 584.42 psig @ 3266.00 ft (KB)
Start Date: 2006.06.13 End Date: 2006.06.13
Start Time: 06:03:43 End Time: 14:43:11

Capacity: 7000.00 psig
Last Calib.: 2006.06.13
Time On Btm: 2006.06.13 @ 07:48:11
Time Off Btm: 2006.06.13 @ 11:55:41

TEST COMMENT: IF Strong Blow off BOB in 3 min
ISI Weak Blow back built to 3 in
FF Strong Blow off BOB in 3 min
FSI Weak Blow back built to 2 in

Pressure vs. Time



PRESSURE SUMMARY

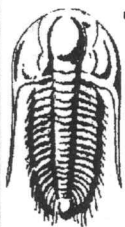
Time (Min.)	Pressure (psig)	Temp (deg F)	Annotation
0	1537.29	96.17	Initial Hydro-static
1	38.96	95.74	Open To Flow (1)
30	292.68	105.33	Shut-In(1)
109	824.09	102.40	End Shut-In(1)
109	298.68	102.23	Open To Flow (2)
176	584.42	105.73	Shut-In(2)
247	816.20	103.97	End Shut-In(2)
248	1522.05	104.06	Final Hydro-static

Recovery

Length (ft)	Description	Volume (bbl)
240.00	MWw/SliShO 1%O 10%M 89%W	1.95
900.00	GOCMW 5%O 10%M 10%G 75%w	12.62
150.00	GOCMW 10%G 10%O 15%M 65%W	2.10
60.00	Free Oil	0.84

Gas Rates

	Choke (inches)	Pressure (psig)	Gas Rate (Mcf/d)



**TRILOBITE
TESTING, INC.**

DRILL STEM TEST REPORT

TOOL DIAGRAM

Murfin Drilling Co
250 N Water Ste 300
Wichita KS 67202

ATTN: Brad Rine

Rosticil # 1-5
5 9S18W Rooks KS
Job Ticket: 25384 **DST#: 2**
Test Start: 2006.06.13 @ 06:03:41

Tool Information

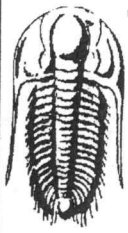
Drill Pipe:	Length: 3044.00 ft	Diameter: 3.80 inches	Volume: 42.70 bbl	Tool Weight: 2000.00 lb
Heavy Wt. Pipe:	Length: 0.00 ft	Diameter: 2.25 inches	Volume: 0.00 bbl	Weight set on Packer: 30000.00 lb
Drill Collar:	Length: 155.00 ft	Diameter: 2.25 inches	Volume: 0.76 bbl	Weight to Pull Loose: 38000.00 lb
			<u>Total Volume: 43.46 bbl</u>	Tool Chased 0.00 ft
Drill Pipe Above KB:	20.00 ft			String Weight: Initial 30000.00 lb
Depth to Top Packer:	3201.00 ft			Final 38000.00 lb
Depth to Bottom Packer:	ft			
Interval between Packers:	109.00 ft			
Tool Length:	131.00 ft			
Number of Packers:	2	Diameter: 6.75 inches		

Tool Comments:

Tool Description	Length (ft)	Serial No.	Position	Depth (ft)	Accum. Lengths
------------------	-------------	------------	----------	------------	----------------

Shut In Tool	5.00			3184.00	
Hydraulic tool	5.00			3189.00	
Safety Joint	2.00			3191.00	
Packer	5.00			3196.00	22.00 Bottom Of Top Packer
Packer	5.00			3201.00	
Stubb	1.00			3202.00	
Change Over Sub	1.00			3203.00	
Blank Spacing	62.00			3265.00	
Change Over Sub	1.00			3266.00	
Recorder	0.00	6672	Inside	3266.00	
Perforations	41.00			3307.00	
Recorder	0.00	11020	Inside	3307.00	
Bullnose	3.00			3310.00	109.00 Bottom Packers & Anchor

Total Tool Length: 131.00



**TRILOBITE
TESTING, INC**

DRILL STEM TEST REPORT

FLUID SUMMARY

Murfin Drilling Co
250 N Water Ste 300
Wichita KS 67202
ATTN: Brad Rine

Rosticil # 1-5
5 9S18W Rooks KS
Job Ticket: 25384 **DST#: 2**
Test Start: 2006.06.13 @ 06:03:41

Mud and Cushion Information

Mud Type: Gel Chem	Cushion Type:	Oil API:	deg API
Mud Weight: 9.00 lb/gal	Cushion Length: ft	Water Salinity:	64000 ppm
Viscosity: 50.00 sec/qt	Cushion Volume: bbl		
Water Loss: 6.68 in ³	Gas Cushion Type:		
Resistivity: ohm.m	Gas Cushion Pressure: psig		
Salinity: ppm			
Filter Cake: inches			

Recovery Information

Recovery Table

Length ft	Description	Volume bbl
240.00	MWw/SiShO 1%O 10%M 89%W	1.955
900.00	GOCMW 5%O 10%M 10%G 75%w	12.625
150.00	GOCMW 10%G 10%O 15%M 65%W	2.104
60.00	Free Oil	0.842

Total Length: 1350.00 ft Total Volume: 17.526 bbl

Num Fluid Samples: 0 Num Gas Bombs: 0 Serial #:
Laboratory Name: Laboratory Location:
Recovery Comments:

Serial #: 6672

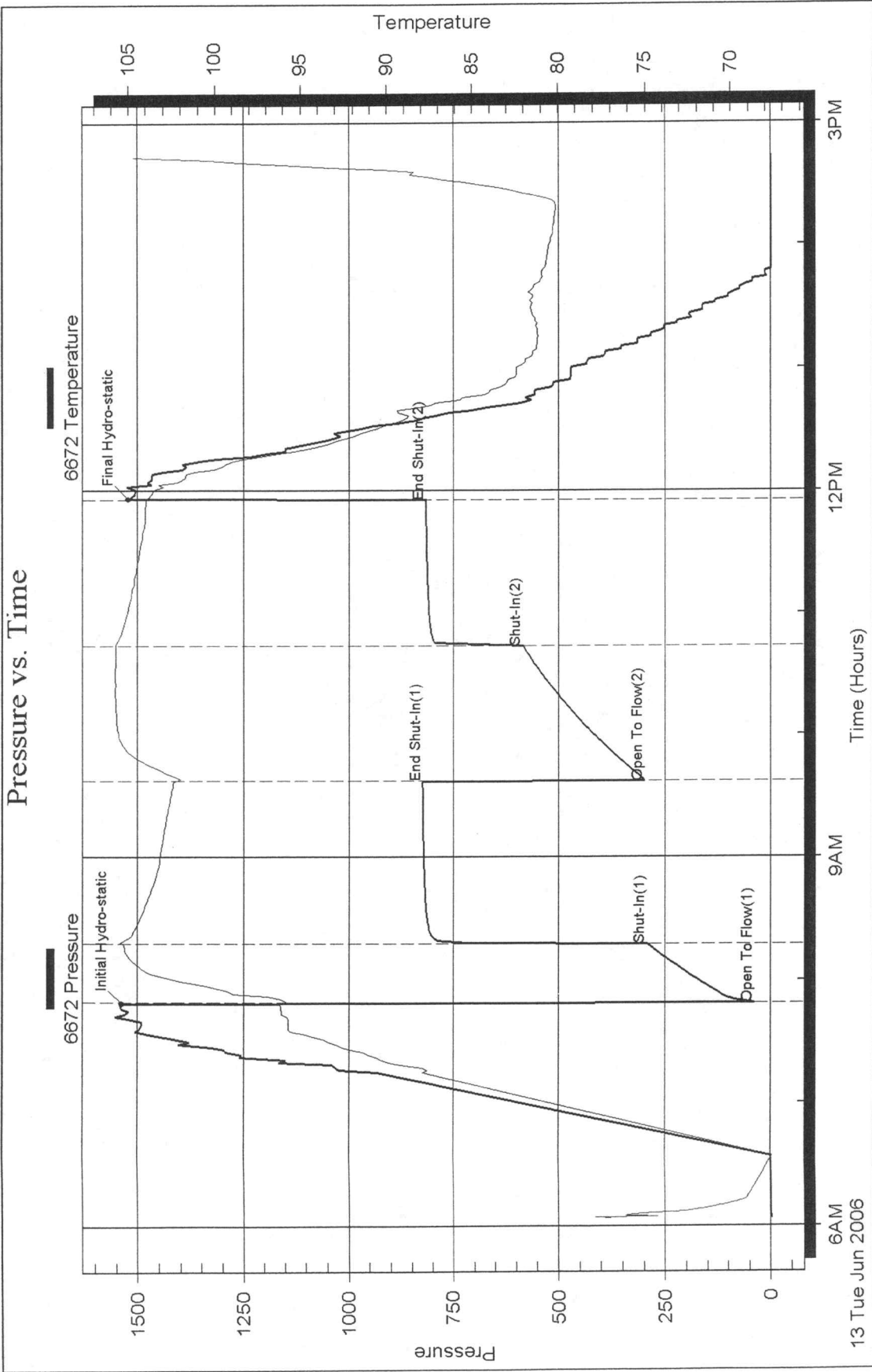
Inside

Murfin Drilling Co

5 9S18W Rocks KS

DST Test Number: 2

Pressure vs. Time





DRILL STEM TEST REPORT

Prepared For: **Murfin Drilling Co**

250 N Water Ste 300
Wichita KS 67202

ATTN: Brad Rine

5 9S18W Rooks KS

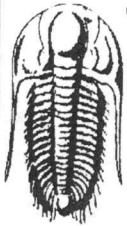
Rosticil # 1-5

Start Date: 2006.06.13 @ 21:45:35

End Date: 2006.06.14 @ 06:08:33

Job Ticket #: 25385 DST #: 3

Trilobite Testing, Inc
PO Box 362 Hays, KS 67601
ph: 785-625-4778 fax: 785-625-5620



TRILOBITE TESTING, INC

DRILL STEM TEST REPORT

Murfin Drilling Co
 250 N Water Ste 300
 Wichita KS 67202
 ATTN: Brad Rine

Rosticil # 1-5
5 9S18W Rooks KS
 Job Ticket: 25385 **DST#: 3**
 Test Start: 2006.06.13 @ 21:45:35

GENERAL INFORMATION:

Formation: **L/KC E,F,G**
 Deviated: **No Whipstock:** ft (KB)
 Time Tool Opened: 23:46:48
 Time Test Ended: 06:08:33

Test Type: **Conventional Bottom Hole**
 Tester: **Michael**
 Unit No: **22**

Interval: **3311.00 ft (KB) To 3342.00 ft (KB) (TVD)**
 Total Depth: **3342.00 ft (KB) (TVD)**
 Hole Diameter: **7.80 inches** Hole Condition: **Fair**

Reference Elevations: **2068.00 ft (KB)**
2063.00 ft (CF)
 KB to GR/CF: **5.00 ft**

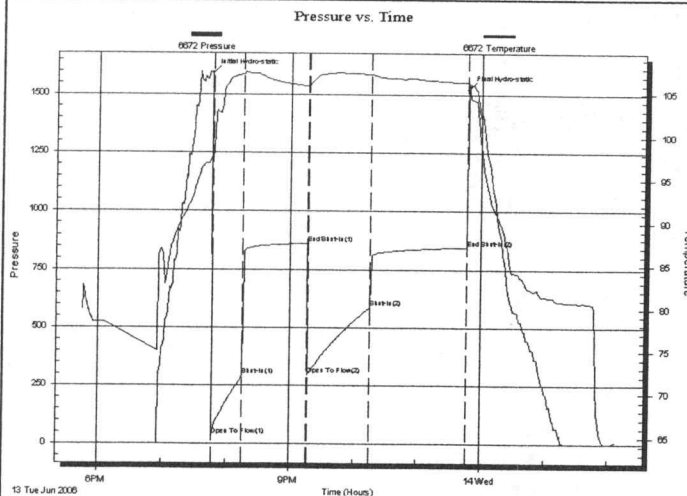
Serial #: 6672

Inside

Press@RunDepth: **586.78 psig @ 3311.00 ft (KB)**
 Start Date: **2006.06.13** End Date: **2006.06.14**
 Start Time: **17:45:35** End Time: **02:08:33**

Capacity: **7000.00 psig**
 Last Calib.: **2006.06.13**
 Time On Btm: **2006.06.13 @ 19:46:18**
 Time Off Btm: **2006.06.13 @ 23:47:33**

TEST COMMENT: BOB in 5 min
 Bled off in 2 min Return blow to 8 in
 BOB in 3 min
 Bled off in 2 min Return blow to 3 1/2 in



PRESSURE SUMMARY

Time (Min.)	Pressure (psig)	Temp (deg F)	Annotation
0	1592.36	97.54	Initial Hydro-static
1	32.60	97.42	Open To Flow (1)
30	289.58	107.29	Shut-In(1)
90	861.02	105.93	End Shut-In(1)
90	295.41	105.75	Open To Flow (2)
150	586.78	107.28	Shut-In(2)
241	845.08	106.36	End Shut-In(2)
242	1523.78	106.28	Final Hydro-static

Recovery

Length (ft)	Description	Volume (bbl)
180.00	WCMCO 70%W 20%M 10%O	1.16
30.00	Free Oil	0.42
0.00	90' GIP	0.00

Gas Rates

Choke (inches)	Pressure (psig)	Gas Rate (Mcf/d)



**TRILOBITE
TESTING, INC.**

DRILL STEM TEST REPORT

TOOL DIAGRAM

Murfin Drilling Co
250 N Water Ste 300
Wichita KS 67202

ATTN: Brad Rine

Rosticil # 1-5
5 9S18W Rooks KS
Job Ticket: 25385 **DST#: 3**
Test Start: 2006.06.13 @ 21:45:35

Tool Information

Drill Pipe:	Length: 3150.00 ft	Diameter: 3.80 inches	Volume: 44.19 bbl	Tool Weight: 1500.00 lb
Heavy Wt. Pipe:	Length: 0.00 ft	Diameter: 2.25 inches	Volume: 0.00 bbl	Weight set on Packer: 25000.00 lb
Drill Collar:	Length: 150.00 ft	Diameter: 2.25 inches	Volume: 0.74 bbl	Weight to Pull Loose: 42000.00 lb
			Total Volume: 44.93 bbl	Tool Chased 0.00 ft
Drill Pipe Above KB:	11.00 ft			String Weight: Initial 32000.00 lb
Depth to Top Packer:	3311.00 ft			Final 38000.00 lb
Depth to Bottom Packer:	ft			
Interval between Packers:	31.00 ft			
Tool Length:	53.00 ft			
Number of Packers:	2	Diameter: 6.75 inches		

Tool Comments:

Tool Description	Length (ft)	Serial No.	Position	Depth (ft)	Accum. Lengths
Shut In Tool	5.00			3294.00	
Hydraulic tool	5.00			3299.00	
Safety Joint	2.00			3301.00	
Packer	5.00			3306.00	22.00 Bottom Of Top Packer
Packer	5.00			3311.00	
Recorder	0.00	6672	Inside	3311.00	
Perforations	27.00			3338.00	
Recorder	0.00	11020	Inside	3338.00	
Bullnose	4.00			3342.00	31.00 Bottom Packers & Anchor
Total Tool Length:	53.00				



**TRILOBITE
TESTING, INC.**

DRILL STEM TEST REPORT

FLUID SUMMARY

Murfin Drilling Co
250 N Water Ste 300
Wichita KS 67202
ATTN: Brad Rine

Rosticil # 1-5
5 9S18W Rooks KS
Job Ticket: 25385 **DST#: 3**
Test Start: 2006.06.13 @ 21:45:35

Mud and Cushion Information

Mud Type: Gel Chem	Cushion Type:	Oil API:	deg API
Mud Weight: 9.00 lb/gal	Cushion Length: ft	Water Salinity:	ppm
Viscosity: 50.00 sec/qt	Cushion Volume: bbl		
Water Loss: 2.86 in ³	Gas Cushion Type:		
Resistivity: 0.00 ohm.m	Gas Cushion Pressure: psig		
Salinity: 3700.00 ppm			
Filter Cake: 2.00 inches			

Recovery Information

Recovery Table

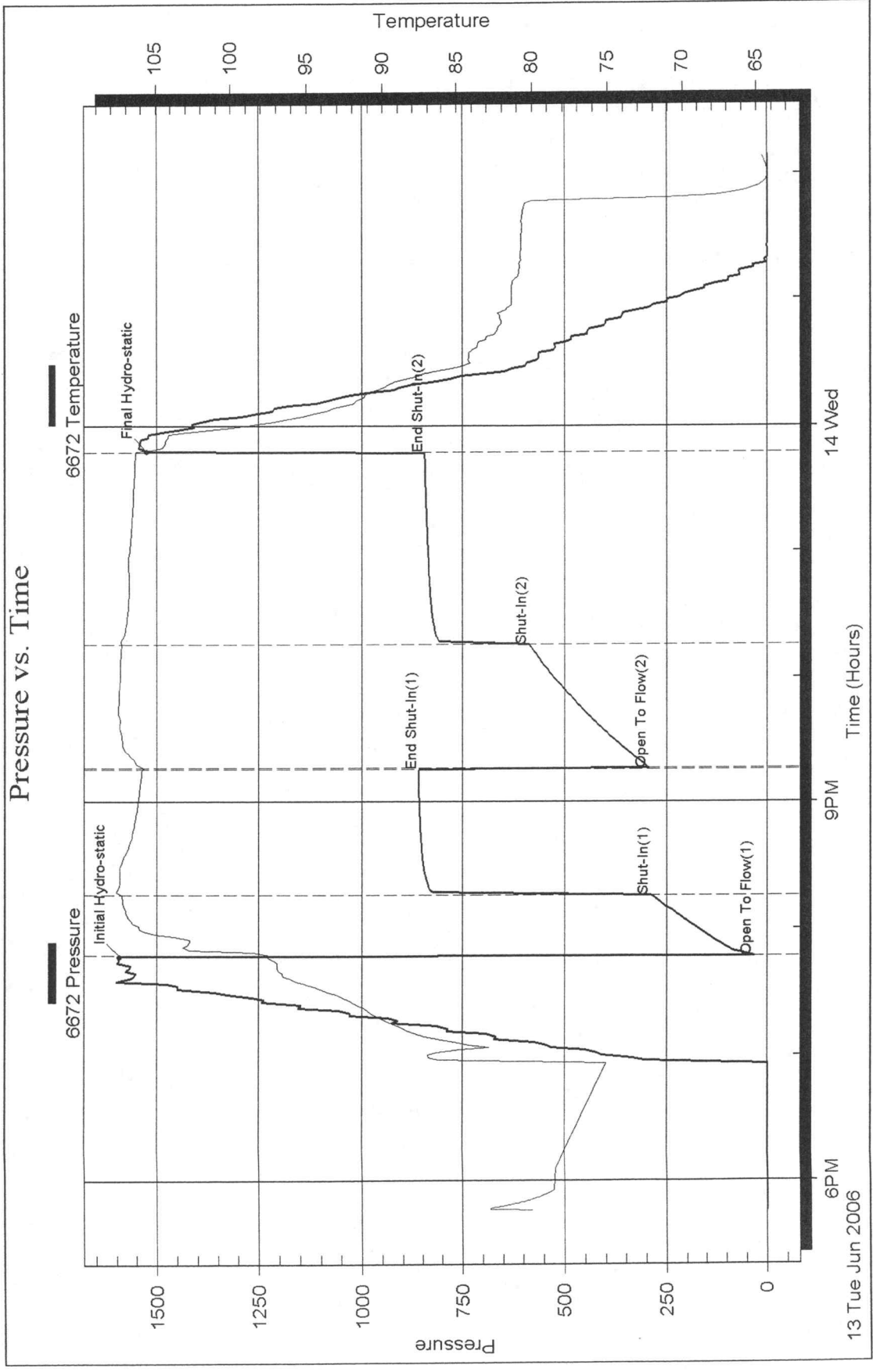
Length ft	Description	Volume bbl
180.00	WCMCO 70%W 20%M 10%O	1.158
30.00	Free Oil	0.421
0.00	90' GIP	0.000

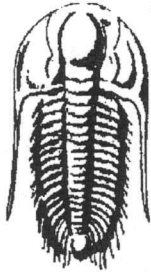
Total Length: 210.00 ft Total Volume: 1.579 bbl

Num Fluid Samples: 0 Num Gas Bombs: 0 Serial #:

Laboratory Name: Laboratory Location:

Recovery Comments:





**TRILOBITE
TESTING, INC.**

DRILL STEM TEST REPORT

Prepared For: **Murfin Drilling Co**

250 N Water Ste 300
Wichita KS 67202

ATTN: Brad Rine

5 9S18W Rooks KS

Rosticil # 1-5

Start Date: 2006.06.14 @ 16:56:45

End Date: 2006.06.15 @ 00:15:43

Job Ticket #: 25386 DST #: 4

Trilobite Testing, Inc

PO Box 362 Hays, KS 67601

ph: 785-625-4778 fax: 785-625-5620

Murfin Drilling Co

Rosticil # 1-5

5 9S18W Rooks KS

DST # 4

L/KC, H,I,J,K,L

2006.06.14



**TRILOBITE
TESTING, INC.**

DRILL STEM TEST REPORT

Murfin Drilling Co
250 N Water Ste 300
Wichita KS 67202

ATTN: Brad Rine

Rosticil # 1-5

5 9S18W Rooks KS

Job Ticket: 25386

DST#: 4

Test Start: 2006.06.14 @ 16:56:45

GENERAL INFORMATION:

Formation: **L/KC, H,I,J,K,L**
Deviated: No Whipstock: ft (KB)
Time Tool Opened: 19:31:43
Time Test Ended: 00:15:43

Test Type: Conventional Bottom Hole
Tester: Michael
Unit No: 22

Interval: **3361.00 ft (KB) To 3470.00 ft (KB) (TVD)**
Total Depth: 3228.00 ft (KB) (TVD)
Hole Diameter: 7.80 inches Hole Condition: Fair

Reference Elevations: 2068.00 ft (KB)
2063.00 ft (CF)
KB to GR/CF: 5.00 ft

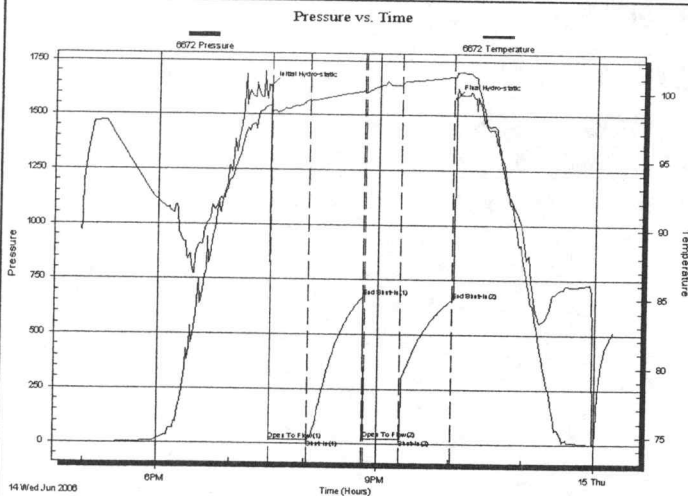
Serial #: 6672

Inside

Press@RunDepth: 24.40 psig @ 3362.00 ft (KB)
Start Date: 2006.06.14 End Date: 2006.06.15
Start Time: 16:56:45 End Time: 00:15:43

Capacity: 7000.00 psig
Last Calib.: 2006.06.15
Time On Btm: 2006.06.14 @ 19:30:28
Time Off Btm: 2006.06.14 @ 22:03:28

TEST COMMENT: IF Return blow to surface died away in 2 min
ISI No return
FF No blow
FSI No return



PRESSURE SUMMARY

Time (Min.)	Pressure (psig)	Temp (deg F)	Annotation
0	1633.42	99.01	Initial Hydro-static
2	15.74	98.64	Open To Flow (1)
33	19.16	99.36	Shut-In (1)
77	670.96	100.10	End Shut-In (1)
79	21.67	100.08	Open To Flow (2)
108	24.40	100.62	Shut-In (2)
151	660.77	101.18	End Shut-In (2)
154	1580.77	101.53	Final Hydro-static

Recovery

Length (ft)	Description	Volume (bbl)
5.00	100%M	0.02

Gas Rates

Choke (inches)	Pressure (psig)	Gas Rate (Mcf/d)



**TRILOBITE
TESTING, INC.**

DRILL STEM TEST REPORT

TOOL DIAGRAM

Murfin Drilling Co
250 N Water Ste 300
Wichita KS 67202

ATTN: Brad Rine

Rosticil # 1-5
5 9S18W Rooks KS
Job Ticket: 25386 **DST#: 4**
Test Start: 2006.06.14 @ 16:56:45

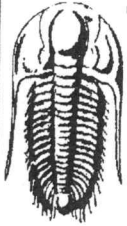
Tool Information

Drill Pipe:	Length: 3205.00 ft	Diameter: 3.80 inches	Volume: 44.96 bbl	Tool Weight: 1500.00 lb
Heavy Wt. Pipe:	Length: 0.00 ft	Diameter: 2.25 inches	Volume: 0.00 bbl	Weight set on Packer: 25000.00 lb
Drill Collar:	Length: 150.00 ft	Diameter: 2.25 inches	Volume: 0.74 bbl	Weight to Pull Loose: 40000.00 lb
			Total Volume: 45.70 bbl	Tool Chased 0.00 ft
Drill Pipe Above KB:	16.00 ft			String Weight: Initial 34000.00 lb
Depth to Top Packer:	3361.00 ft			Final 34000.00 lb
Depth to Bottom Packer:	ft			
Interval between Packers:	108.00 ft			
Tool Length:	130.00 ft			
Number of Packers:	2	Diameter: 6.75 inches		

Tool Comments:

Tool Description	Length (ft)	Serial No.	Position	Depth (ft)	Accum. Lengths
Shut In Tool	5.00			3344.00	
Hydraulic tool	5.00			3349.00	
Safety Joint	2.00			3351.00	
Packer	5.00			3356.00	22.00 Bottom Of Top Packer
Packer	5.00			3361.00	
Stubb	1.00			3362.00	
Recorder	0.00	6672	Inside	3362.00	
Perforations	8.00			3370.00	
Change Over Sub	1.00			3371.00	
Blank Spacing	61.00			3432.00	
Blank Spacing	31.00			3463.00	
Change Over Sub	1.00			3464.00	
Recorder	0.00	11020	Inside	3464.00	
Bullnose	5.00			3469.00	108.00 Bottom Packers & Anchor

Total Tool Length: 130.00



**TRILOBITE
TESTING, INC.**

DRILL STEM TEST REPORT

FLUID SUMMARY

Murfin Drilling Co
250 N Water Ste 300
Wichita KS 67202
ATTN: Brad Rine

Rosticil # 1-5
5 9S18W Rooks KS
Job Ticket: 25386 **DST#: 4**
Test Start: 2006.06.14 @ 16:56:45

Mud and Cushion Information

Mud Type:	Gel Chem	Cushion Type:		Oil API:	deg API
Mud Weight:	9.00 lb/gal	Cushion Length:	ft	Water Salinity:	ppm
Viscosity:	54.00 sec/qt	Cushion Volume:	bbl		
Water Loss:	6.74 in ³	Gas Cushion Type:			
Resistivity:	0.00 ohm.m	Gas Cushion Pressure:	psig		
Salinity:	6500.00 ppm				
Filter Cake:	2.00 inches				

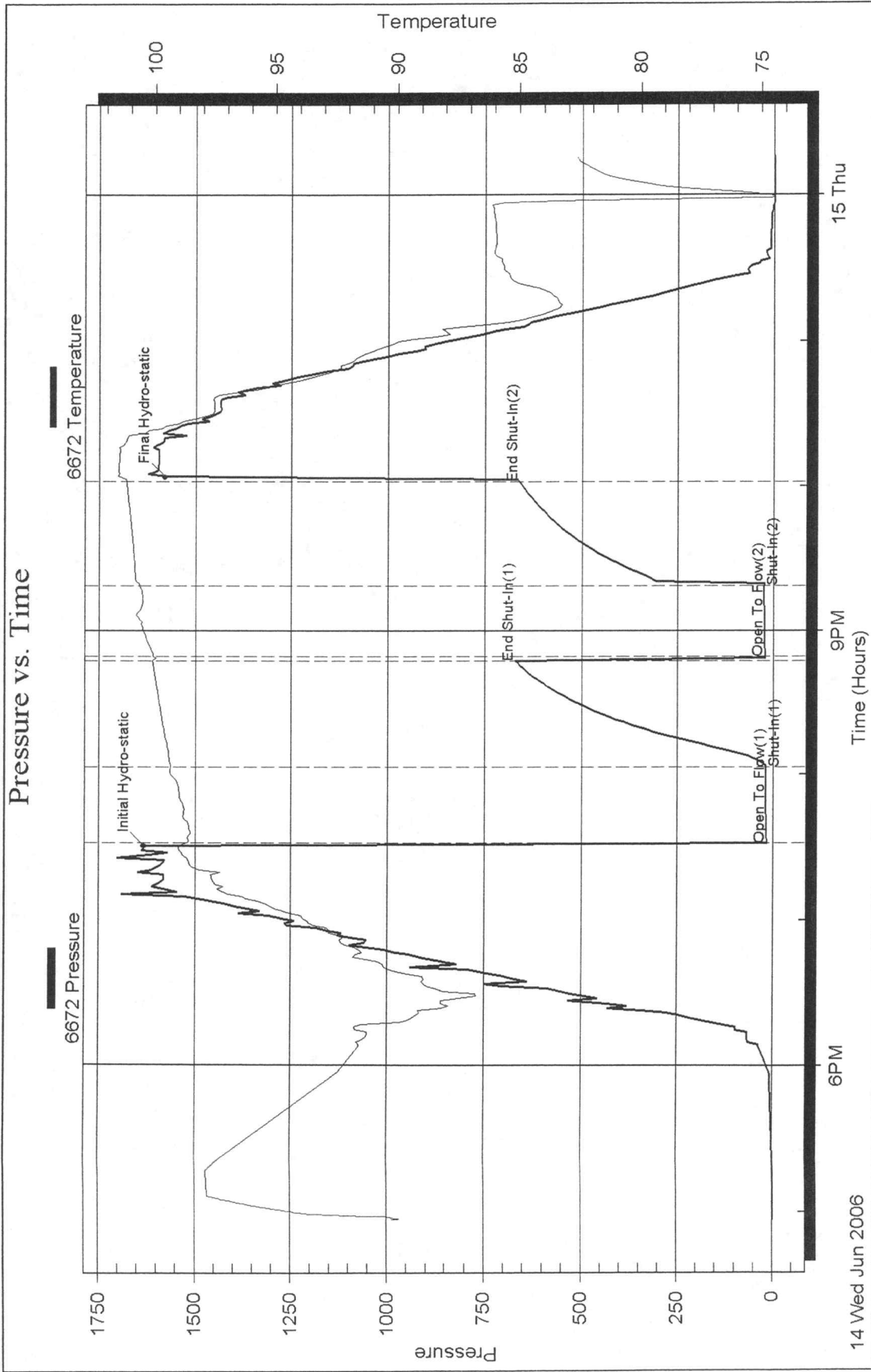
Recovery Information

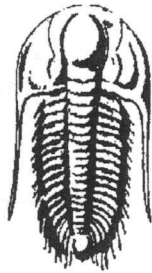
Recovery Table

Length ft	Description	Volume bbl
5.00	100%M	0.025

Total Length: 5.00 ft Total Volume: 0.025 bbl
Num Fluid Samples: 0 Num Gas Bombs: 0 Serial #:
Laboratory Name: Laboratory Location:
Recovery Comments:

Pressure vs. Time





**TRILOBITE
TESTING, INC.**

DRILL STEM TEST REPORT

Prepared For: **Murfin Drilling Co**

250 N Water Ste 300
Wichita KS 67202

ATTN: Brad Rine

5 9S18W Rooks KS

Rosticil # 1-5

Start Date: 2006.06.15 @ 10:49:48

End Date: 2006.06.15 @ 17:26:01

Job Ticket #: 25387 DST #: 5

Trilobite Testing, Inc

PO Box 362 Hays, KS 67601

ph: 785-625-4778 fax: 785-625-5620

Murfin Drilling Co

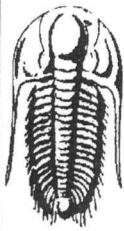
Rosticil # 1-5

5 9S18W Rooks KS

DST # 5

Arbuckle

2006.06.15



TRILOBITE TESTING, INC.

DRILL STEM TEST REPORT

Murfin Drilling Co
 250 N Water Ste 300
 Wichita KS 67202
 ATTN: Brad Rine

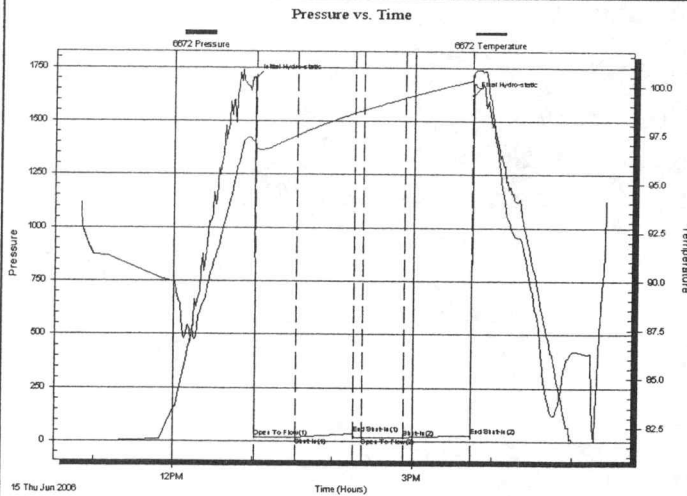
Rosticil # 1-5
5 9S18W Rooks KS
 Job Ticket: 25387 **DST#: 5**
 Test Start: 2006.06.15 @ 10:49:48

GENERAL INFORMATION:

Formation: **Arbuckle**
 Deviated: No Whipstock: ft (KB)
 Time Tool Opened: 13:01:31
 Time Test Ended: 17:26:01
 Test Type: Conventional Bottom Hole
 Tester: Michael
 Unit No: 22
 Interval: **3461.00 ft (KB) To 3505.00 ft (KB) (TVD)**
 Total Depth: 3505.00 ft (KB) (TVD)
 Reference Elevations: 2068.00 ft (KB)
 2063.00 ft (CF)
 Hole Diameter: 7.80 inches Hole Condition: Fair
 KB to GR/CF: 5.00 ft

Serial #: 6672 Inside
 Press@RunDepth: 19.58 psig @ 3469.00 ft (KB) Capacity: 7000.00 psig
 Start Date: 2006.06.15 End Date: 2006.06.15 Last Calib.: 2006.06.15
 Start Time: 10:49:48 End Time: 17:26:01 Time On Btm: 2006.06.15 @ 13:00:31
 Time Off Btm: 2006.06.15 @ 15:44:16

TEST COMMENT: IF Return bolw to surface died away in 10 min
 IS No return
 FF No blow
 ISI No return



PRESSURE SUMMARY

Time (Min.)	Pressure (psig)	Temp (deg F)	Annotation
0	1700.09	97.16	Initial Hydro-static
1	16.61	96.84	Open To Flow (1)
32	18.25	97.47	Shut-In(1)
76	37.58	98.63	End Shut-In(1)
81	18.05	98.74	Open To Flow (2)
113	19.58	99.40	Shut-In(2)
163	29.81	100.28	End Shut-In(2)
164	1621.48	100.61	Final Hydro-static

Recovery

Length (ft)	Description	Volume (bbl)
5.00	100%M	0.02

Gas Rates

Choke (inches)	Pressure (psig)	Gas Rate (Mcf/d)



**TRILOBITE
TESTING, INC.**

DRILL STEM TEST REPORT

TOOL DIAGRAM

Murfin Drilling Co
250 N Water Ste 300
Wichita KS 67202

ATTN: Brad Rine

Rosticil # 1-5
5 9S18W Rooks KS
Job Ticket: 25387 **DST#: 5**
Test Start: 2006.06.15 @ 10:49:48

Tool Information

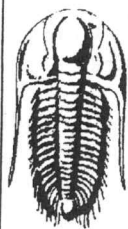
Drill Pipe:	Length: 3295.00 ft	Diameter: 3.80 inches	Volume: 46.22 bbl	Tool Weight: 1500.00 lb
Heavy Wt. Pipe:	Length: 0.00 ft	Diameter: 2.25 inches	Volume: 0.00 bbl	Weight set on Packer: 25000.00 lb
Drill Collar:	Length: 150.00 ft	Diameter: 2.25 inches	Volume: 0.74 bbl	Weight to Pull Loose: 40000.00 lb
			Total Volume: 46.96 bbl	Tool Chased 0.00 ft
Drill Pipe Above KB:	6.00 ft			String Weight: Initial 34000.00 lb
Depth to Top Packer:	3461.00 ft			Final 34000.00 lb
Depth to Bottom Packer:	ft			
Interval between Packers:	44.00 ft			
Tool Length:	66.00 ft			
Number of Packers:	2	Diameter: 6.75 inches		

Tool Comments:

Tool Description	Length (ft)	Serial No.	Position	Depth (ft)	Accum. Lengths
------------------	-------------	------------	----------	------------	----------------

Shut In Tool	5.00			3444.00	
Hydraulic tool	5.00			3449.00	
Safety Joint	2.00			3451.00	
Packer	5.00			3456.00	22.00 Bottom Of Top Packer
Packer	5.00			3461.00	
Stubb	1.00			3462.00	
Perforations	6.00			3468.00	
Change Over Sub	1.00			3469.00	
Recorder	0.00	6672	Inside	3469.00	
Blank Spacing	31.00			3500.00	
Change Over Sub	1.00			3501.00	
Recorder	0.00	11020	Inside	3501.00	
Bullnose	4.00			3505.00	44.00 Bottom Packers & Anchor

Total Tool Length: 66.00



TRILOBITE
TESTING, INC.

DRILL STEM TEST REPORT

FLUID SUMMARY

Murfin Drilling Co

Rosticil # 1-5

250 N Water Ste 300
Wichita KS 67202

5 9S18W Rooks KS

Job Ticket: 25387

DST#: 5

ATTN: Brad Rine

Test Start: 2006.06.15 @ 10:49:48

Mud and Cushion Information

Mud Type: Gel Chem

Mud Weight: 9.00 lb/gal

Viscosity: 55.00 sec/qt

Water Loss: 6.75 in³

Resistivity: 0.00 ohm.m

Salinity: 6500.00 ppm

Filter Cake: 2.00 inches

Cushion Type:

Cushion Length: ft

Cushion Volume: bbl

Gas Cushion Type:

Gas Cushion Pressure: psig

Oil API: deg API

Water Salinity: ppm

Recovery Information

Recovery Table

Length ft	Description	Volume bbl
5.00	100%M	0.025

Total Length: 5.00 ft Total Volume: 0.025 bbl

Num Fluid Samples: 0

Num Gas Bombs: 0

Serial #:

Laboratory Name:

Laboratory Location:

Recovery Comments:

Serial #: 6672

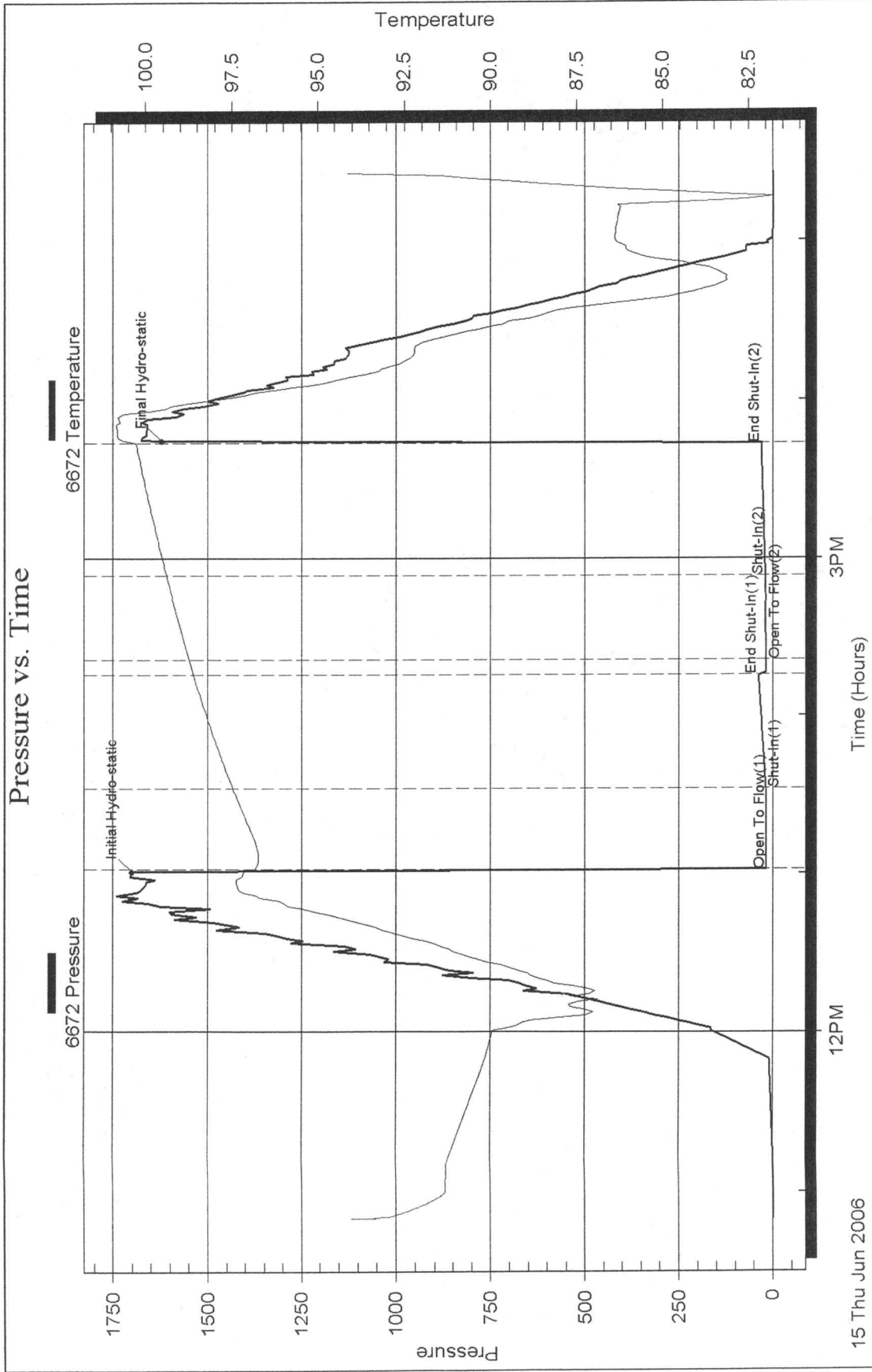
Inside

Murfin Drilling Co

5 9S18W Rocks KS

DST Test Number: 5

Pressure vs. Time





DRILL STEM TEST REPORT

Prepared For: **Murfin Drilling Co**

250 N Water Ste 300
Wichita KS 67202

ATTN: Brad Rine

5 9S18W Rooks KS

Rosticil # 1-5

Start Date: 2006.06.16 @ 00:47:52

End Date: 2006.06.16 @ 06:50:20

Job Ticket #: 25388 DST #: 6

Trilobite Testing, Inc
PO Box 362 Hays, KS 67601
ph: 785-625-4778 fax: 785-625-5620



**TRILOBITE
TESTING, INC.**

DRILL STEM TEST REPORT

Murfin Drilling Co
250 N Water Ste 300
Wichita KS 67202
ATTN: Brad Rine

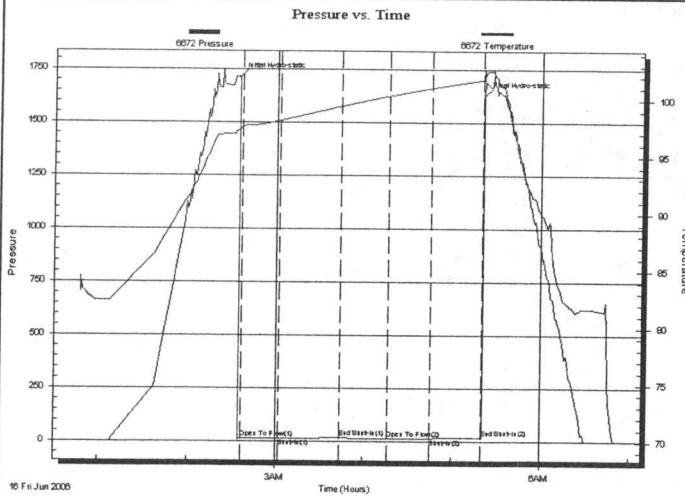
Rosticil # 1-5
5 9S18W Rooks KS
Job Ticket: 25388 **DST#: 6**
Test Start: 2006.06.16 @ 00:47:52

GENERAL INFORMATION:

Formation: **Arbuckle**
Deviated: No Whipstock: ft (KB)
Time Tool Opened: 02:36:20
Time Test Ended: 06:50:20
Test Type: Conventional Bottom Hole
Tester: Michael
Unit No: 22
Interval: **3505.00 ft (KB) To 3520.00 ft (KB) (TVD)**
Reference Elevations: 2068.00 ft (KB)
Total Depth: 33520.00 ft (KB) (TVD)
2063.00 ft (CF)
Hole Diameter: 7.80 inches Hole Condition: Fair
KB to GR/CF: 5.00 ft

Serial #: 6672 Inside
Press@RunDepth: 15.58 psig @ 3506.00 ft (KB) Capacity: 7000.00 psig
Start Date: 2006.06.16 End Date: 2006.06.16 Last Calib.: 2006.06.16
Start Time: 00:47:52 End Time: 06:50:20 Time On Btm: 2006.06.16 @ 02:34:20
Time Off Btm: 2006.06.16 @ 05:21:05

TEST COMMENT: IF Return blow to surface died away in 5 min
IS No return
FF No blow
ISI No return



PRESSURE SUMMARY

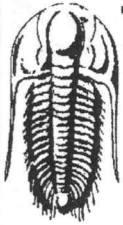
Time (Min.)	Pressure (psig)	Temp (deg F)	Annotation
0	1713.56	97.38	Initial Hydro-static
2	12.24	97.68	Open To Flow (1)
28	12.81	98.19	Shut-In(1)
70	18.53	99.44	End Shut-In(1)
103	13.17	100.36	Open To Flow (2)
132	15.58	101.07	Shut-In(2)
166	20.25	101.79	End Shut-In(2)
167	1629.41	102.71	Final Hydro-static

Recovery

Length (ft)	Description	Volume (bbl)
1.00	Mud 100%M	0.00

Gas Rates

Choke (inches)	Pressure (psig)	Gas Rate (Mcf/d)



**TRILOBITE
TESTING, INC.**

DRILL STEM TEST REPORT

TOOL DIAGRAM

Murfin Drilling Co

250 N Water Ste 300
Wichita KS 67202

ATTN: Brad Rine

Rosticil # 1-5

5 9S18W Rooks KS

Job Ticket: 25388

DST#: 6

Test Start: 2006.06.16 @ 00:47:52

Tool Information

Drill Pipe:	Length: 3363.00 ft	Diameter: 3.80 inches	Volume: 47.17 bbl	Tool Weight: 1500.00 lb
Heavy Wt. Pipe:	Length: 0.00 ft	Diameter: 2.25 inches	Volume: 0.00 bbl	Weight set on Packer: 25000.00 lb
Drill Collar:	Length: 150.00 ft	Diameter: 2.25 inches	Volume: 0.74 bbl	Weight to Pull Loose: 40000.00 lb
			<u>Total Volume: 47.91 bbl</u>	Tool Chased 0.00 ft
Drill Pipe Above KB:	30.00 ft			String Weight: Initial 30000.00 lb
Depth to Top Packer:	3505.00 ft			Final 30000.00 lb
Depth to Bottom Packer:	ft			
Interval between Packers:	15.00 ft			
Tool Length:	37.00 ft			
Number of Packers:	2	Diameter: 6.75 inches		
Tool Comments:				

Tool Description	Length (ft)	Serial No.	Position	Depth (ft)	Accum. Lengths
Shut In Tool	5.00			3488.00	
Hydraulic tool	5.00			3493.00	
Safety Joint	2.00			3495.00	
Packer	5.00			3500.00	22.00 Bottom Of Top Packer
Packer	5.00			3505.00	
Stubb	1.00			3506.00	
Recorder	0.00	6672	Inside	3506.00	
Perforations	10.00			3516.00	
Recorder	0.00	11020	Inside	3516.00	
Bullnose	4.00			3520.00	15.00 Bottom Packers & Anchor
Total Tool Length:	37.00				



**TRILOBITE
TESTING, INC.**

DRILL STEM TEST REPORT

FLUID SUMMARY

Murfin Drilling Co

Rosticil # 1-5

250 N Water Ste 300
Wichita KS 67202

5 9S18W Rooks KS

Job Ticket: 25388

DST#: 6

ATTN: Brad Rine

Test Start: 2006.06.16 @ 00:47:52

Mud and Cushion Information

Mud Type: Gel Chem

Cushion Type:

Oil API:

deg API

Mud Weight: 9.00 lb/gal

Cushion Length:

ft

Water Salinity:

ppm

Viscosity: 55.00 sec/qt

Cushion Volume:

bbbl

Water Loss: 3.79 in³

Gas Cushion Type:

Resistivity: 0.00 ohm.m

Gas Cushion Pressure:

psig

Salinity: 6500.00 ppm

Filter Cake: 2.00 inches

Recovery Information

Recovery Table

Length ft	Description	Volume bbbl
1.00	Mud 100%M	0.005

Total Length:

1.00 ft

Total Volume:

0.005 bbl

Num Fluid Samples: 0

Num Gas Bombs: 0

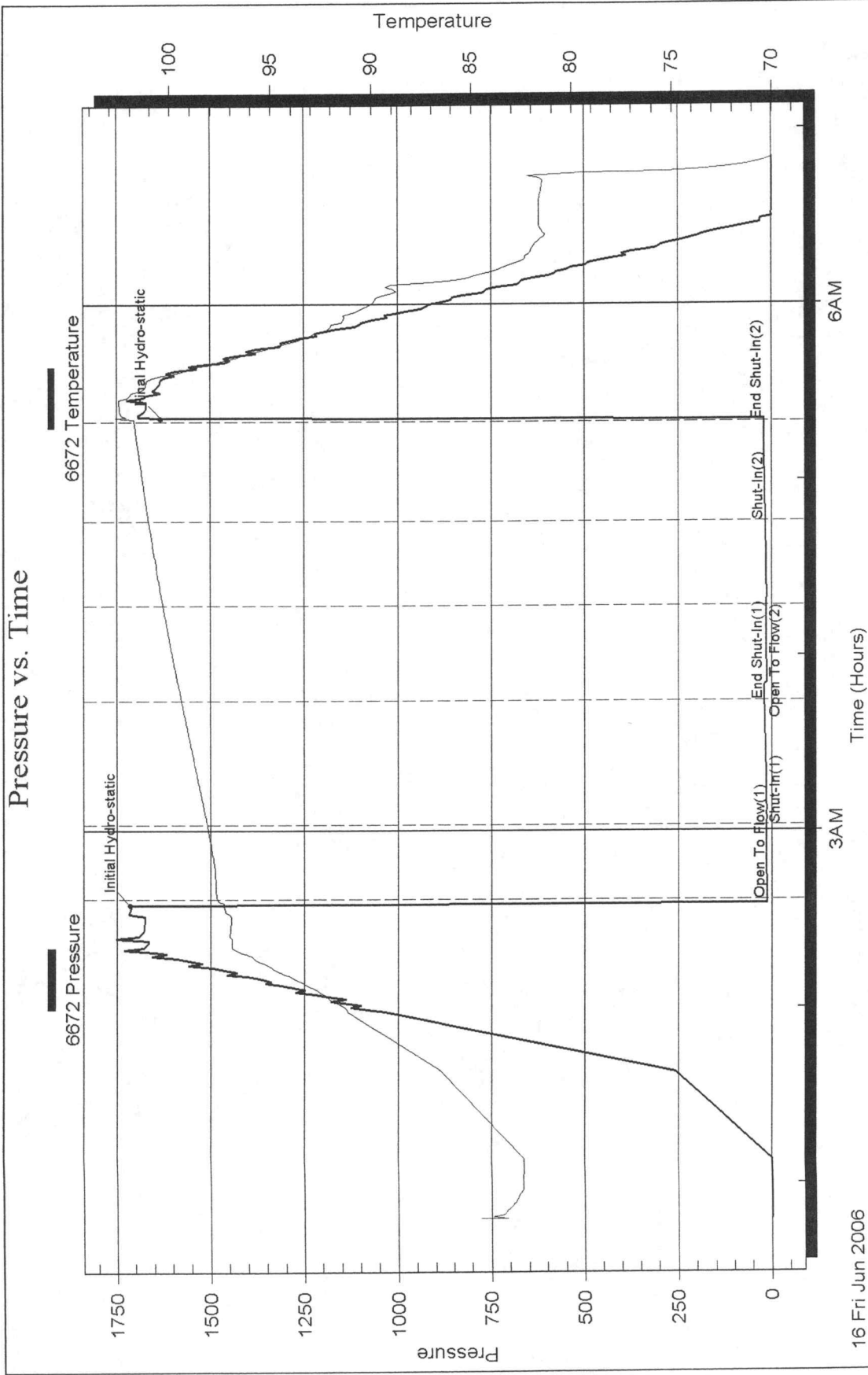
Serial #:

Laboratory Name:

Laboratory Location:

Recovery Comments:

Pressure vs. Time

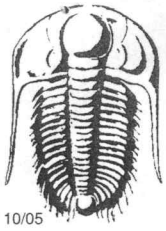


16 Fri Jun 2006

3AM

6AM

Time (Hours)



TRILOBITE TESTING INC.

P.O. Box 362 • Hays, Kansas 67601

8895

25383

Test Ticket

Well Name & No. Rosticil #1-5 Test No. 1 Date 6-12-06
 Company Muffin Drilling Co Zone Tested Uread
 Address 250 N Water St 300 Wichita Ks 67202 Elevation 2048 KB 2063 GL
 Co. Rep / Geo. Brad Rine Rig Muffin 8
 Location: Sec. 5 Twp. 9S Rge. 19W Co. Leakes State Ks
 Comment: _____ Release date / time: _____

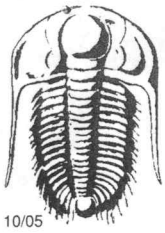
Interval Tested 3171 - 3228 Initial Str Wt./Lbs. 32000 Unseated Str Wt./Lbs. 32000
 Anchor Length 57 Wt. Set Lbs. 30000 Wt. Pulled Loose/Lbs. 36000
 Top Packer Depth 3166 Tool Weight 2000
 Bottom Packer Depth 3171 Hole Size 7 7/8" Rubber Size 6 3/4"
 Total Depth 3228 Wt. Pipe Run _____ Drill Collar Run 155
 Mud Wt. 4.6 LCM 0 Vis. 50 WL 6.8 Drill Pipe Size 4 1/2 IH Ft. Run 3010
 Blow Description It - Weak Surface Blow Built to 3" in IST-Dead
It - ~~Weak~~ Very weak surface Blow FSI-Dead

Recovery - Total Feet	130	GIP	Ft. in DC	Ft. in DP		
Rec.	130	Feet of <u>Oil Slicked Mud</u>	%gas	%oil	%water	%mud
Rec.		Feet of	%gas	%oil	%water	%mud
Rec.		Feet of	%gas	%oil	%water	%mud
Rec.		Feet of	%gas	%oil	%water	%mud
Rec.		Feet of	%gas	%oil	%water	%mud
BHT	100	°F Gravity	°API D @	°F Corrected Gravity	°API	
RW		@	°F	Chlorides	ppm Recovery	Chlorides ppm System

	AK-1	Alpine	Recorder No.	Test
(A) Initial Hydrostatic Mud		1508	4672	1000
(B) First Initial Flow Pressure		14	(depth) 3205	Jars
(C) First Final Flow Pressure		45	Recorder No.	Safety Jt. 75
(D) Initial Shut-In Pressure		821	(depth)	Circ Sub
(E) Second Initial Flow Pressure		47	Recorder No. 11020	Sampler
(F) Second Final Flow Pressure		83	(depth) 3225	Straddle
(G) Final Shut-In Pressure		811	Initial Opening 30	Ext. Packer
(Q) Final Hydrostatic Mud		1424	Initial Shut-In 60	Shale Packer
			Final Flow 45	Ruined Packer
			Final Shut-In 90	Mileage 70 87.50
			T-On Location 11:00	Sub Total: \$1162.50
			T-Started 11:35	Std. By <u>1hr</u> 50
			T-Open 14:25	Acc. Chg:
			T-Pulled 18:05	Other:
			T-Out 19:50	Total: \$1212.50

TRILOBITE TESTING INC. SHALL NOT BE LIABLE FOR DAMAGED OF ANY KIND OF THE PROPERTY OR PERSONNEL OF THE ONE FOR WHOM A TEST IS MADE, OR FOR ANY LOSS SUFFERED OR SUSTAINED, DIRECTLY OR INDIRECTLY, THROUGH THE USE OF ITS EQUIPMENT, OR ITS STATEMENTS OR OPINION CONCERNING THE RESULTS OF ANY TEST. TOOLS LOST OR DAMAGED IN THE HOLE SHALL BE PAID FOR AT COST BY THE PARTY FOR WHOM THE TEST IS MADE.

Approved By Brad Rine
 Our Representative pe Ramsey



TRILOBITE TESTING INC.

P.O. Box 362 • Hays, Kansas 67601

25384

Test Ticket

Well Name & No. Rosticil 1-5 Test No. 2 Date 6-13-06
 Company Murkin Drilling Co Zone Tested Toronto A-D
 Address _____ Elevation 2064 KB 2063 GL
 Co. Rep / Geo. Brad Bue Rig Murkin 9
 Location: Sec. 5 Twp. 9N Rge. 18W Co. Now Rocks State Ks
 Comment: _____ Release date / time: _____

Interval Tested 3201-3310 Initial Str Wt./Lbs. 30000 Unseated Str Wt./Lbs. 38000
 Anchor Length 109 Wt. Set Lbs. 30000 Wt. Pulled Loose/Lbs. 38000
 Top Packer Depth 3196 Tool Weight 2000
 Bottom Packer Depth 3201 Hole Size 7 7/8" Rubber Size 6 3/4"
 Total Depth 3310 Wt. Pipe Run _____ Drill Collar Run 155
 Mud Wt. 9.6 LCM 0 Vis. 50 WL 6.8 Drill Pipe Size 4 1/2 IH Ft. Run _____

Blow Description IF - Strong Blow off BOB in 3 min
IST - Weak Blowback Built to 3" in
FF - Strong Blow off BOB in 3 min
FST - Weak Blowback Built to 2" in

Recovery - Total Feet	GIP	Ft. in DC	Ft. in DP
Rec. <u>60</u>	Feet of <u>Free Oil</u>	%gas <u>100</u> %oil _____ %water _____ %mud _____	
Rec. <u>150</u>	Feet of <u>60CMW</u>	10 %gas <u>10</u> %oil _____ %water <u>65</u> %mud <u>15</u>	
Rec. <u>900</u>	Feet of <u>60CMW</u>	10 %gas <u>5</u> %oil _____ %water <u>75</u> %mud <u>10</u>	
Rec. <u>240</u>	Feet of <u>MWSLISHO</u>	%gas <u>1</u> %oil _____ %water <u>89</u> %mud <u>10</u>	
Rec. _____	Feet of _____	%gas _____ %oil _____ %water _____ %mud _____	

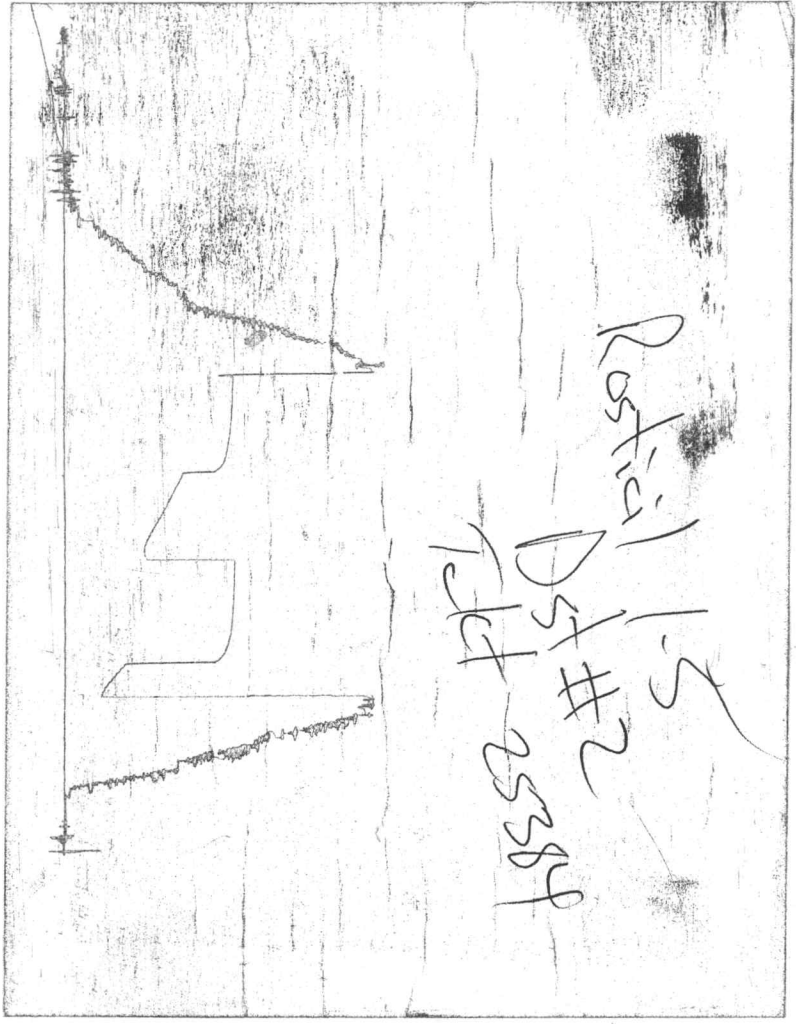
BHT 104 °F Gravity 36 °API D @ 90 °F Corrected Gravity 39 °API
 RW .09 @ 93 °F Chlorides _____ ppm Recovery 64000 Chlorides _____ ppm System

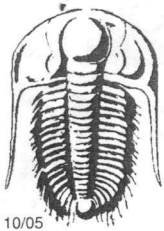
	AK-1	Alpine	Recorder No.	Test
(A) Initial Hydrostatic Mud	<u>1537</u>	PSI	<u>6672</u>	<input checked="" type="checkbox"/> <u>1000</u>
(B) First Initial Flow Pressure	<u>39</u>	PSI	(depth) <u>3266</u>	Jars _____
(C) First Final Flow Pressure	<u>293</u>	PSI	Recorder No. _____	Safety Jt. <input checked="" type="checkbox"/> <u>75</u>
(D) Initial Shut-In Pressure	<u>824</u>	PSI	(depth) _____	Circ Sub _____
(E) Second Initial Flow Pressure	<u>299</u>	PSI	Recorder No. <u>11020</u>	Sampler _____
(F) Second Final Flow Pressure	<u>584</u>	PSI	(depth) <u>3307</u>	Straddle _____
(G) Final Shut-In Pressure	<u>816</u>	PSI	Initial Opening <u>30</u>	Ext. Packer _____
(Q) Final Hydrostatic Mud	<u>1522</u>	PSI	Initial Shut-In <u>60</u>	Shale Packer _____
			Final Flow <u>60</u>	Ruined Packer _____
			Final Shut-In <u>90</u>	Mileage <u>70</u> <u>87.50</u>
			T-On Location <u>5:30</u>	Sub Total: <u>1162.50</u>
			T-Started <u>6:02</u>	Std. By _____
			T-Open <u>7:47</u>	Acc. Chg: _____
			T-Pulled <u>11:47</u>	Other: _____
			T-Out <u>2:30</u>	Total: _____

TRILOBITE TESTING INC. SHALL NOT BE LIABLE FOR DAMAGED OF ANY KIND OF THE PROPERTY OR PERSONNEL OF THE ONE FOR WHOM A TEST IS MADE, OR FOR ANY LOSS SUFFERED OR SUSTAINED, DIRECTLY OR INDIRECTLY, THROUGH THE USE OF ITS EQUIPMENT, OR ITS STATEMENTS OR OPINION CONCERNING THE RESULTS OF ANY TEST. TOOLS LOST OR DAMAGED IN THE HOLE SHALL BE PAID FOR AT COST BY THE PARTY FOR WHOM THE TEST IS MADE.

Approved By Brad Bue
 Our Representative Joe Ramsey

CHART PAGE
This is a photocopy of the actual AK-1 recorder chart.





TRILOBITE TESTING INC.

P.O. Box 362 • Hays, Kansas 67601

25385

Test Ticket

Well Name & No. Rostick #1-5 Test No. 3 Date 6-12-06
 Company Morfin Drilling Co. Zone Tested LKC E, K.E
 Address 250 W Water St 300 Wichita, KS 67202 Elevation 2068 KB 2063 GL
 Co. Rep / Geo. Brad Rine Rig Morfin # 8
 Location: Sec. 5 Twp. 9s Rge. 18W Co. Rooks State K.S.
 Comment: _____ Release date / time: _____

Interval Tested 3311 3342 Initial Str Wt./Lbs. 32,000 Unseated Str Wt/Lbs. 356,000
 Anchor Length 31' Wt. Set Lbs. 25,600 Wt. Pulled Loose/Lbs. 42,000
 Top Packer Depth 3306 Tool Weight 1500
 Bottom Packer Depth 3311 Hole Size 7 7/8" ✓ Rubber Size 6 3/4" ✓
 Total Depth 3342 Wt. Pipe Run ✓ Drill Collar Run 150'
 Mud Wt. 9.1 LCM 0 Vis. 50 WL 2.9 Drill Pipe Size 4 1/2 x H Ft. Run 3/50

Blow Description B.O.B in 5 min
Bled off in 2 min, Return blow to 8 in.
B.O.B in 3 min
Bled off in 2 min, Return blow to 3 in.

Recovery - Total Feet	GIP	Ft. in DC	Ft. in DP
Rec. <u>960'</u>	Feet of <u>Salt Water</u>	%gas	%oil <u>100</u> %water
Rec. <u>180'</u>	Feet of <u>WCMC @ OMCW</u>	%gas	%oil <u>10</u> %water <u>70</u> %mud <u>20</u>
Rec. <u>90'</u>	Feet of <u>Gas</u>	100 %gas	%oil %water %mud
Rec. <u>30'</u>	Feet of <u>Free Oil</u>	%gas <u>100</u> %oil	%water %mud
Rec. _____	Feet of _____	%gas %oil	%water %mud

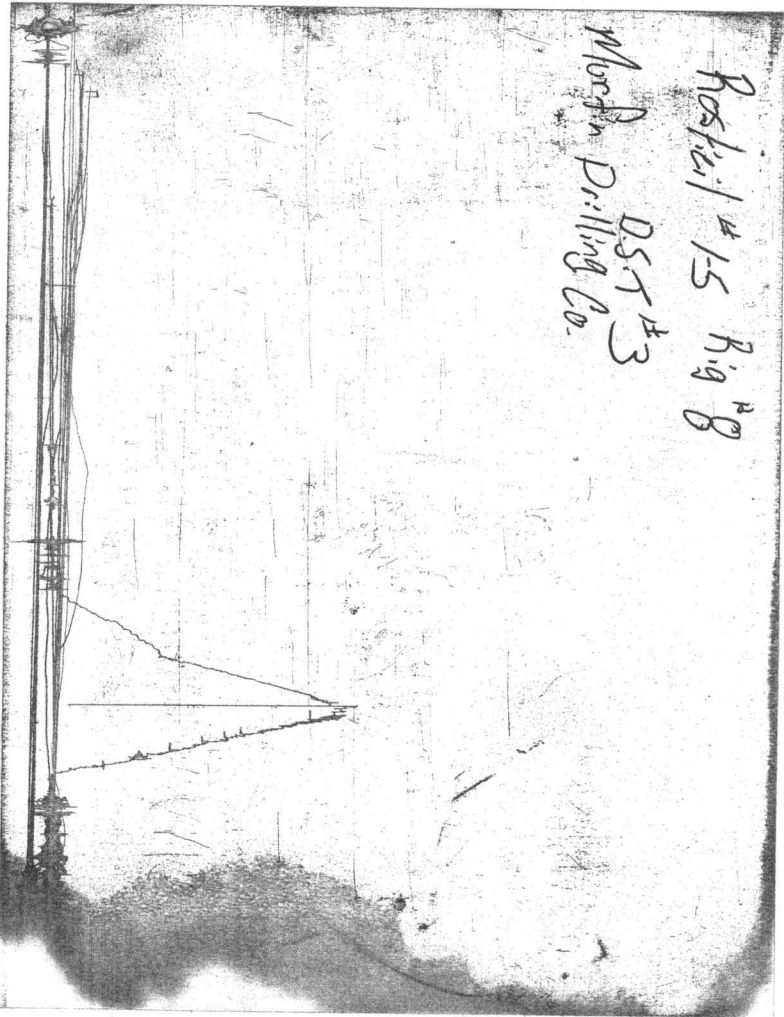
BHT 108 @ 70 °F Gravity 31 °API D @ 60 °F Corrected Gravity 31 °API
 RW 0.98 @ 70 °F Chlorides _____ ppm Recovery 62000 Chlorides 3,700 ppm System

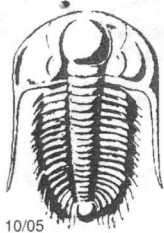
AK-1	Alpine	Recorder No.	Test
(A) Initial Hydrostatic Mud	<u>1675</u> PSI	<u>6672</u>	<u>X \$1,000.00</u>
(B) First Initial Flow Pressure	<u>32</u> PSI	(depth) <u>3311</u>	Jars _____
(C) First Final Flow Pressure	<u>289</u> PSI	Recorder No. _____	Safety Jt. <u>X \$75.00</u>
(D) Initial Shut-In Pressure	<u>861</u> PSI	(depth) _____	Circ Sub <u>X / N/C</u>
(E) Second Initial Flow Pressure	<u>295</u> PSI	Recorder No. <u>11020</u>	Sampler _____
(F) Second Final Flow Pressure	<u>587</u> PSI	(depth) <u>3338</u>	Straddle _____
(G) Final Shut-In Pressure	<u>845</u> PSI	Initial Opening <u>30</u>	Ext. Packer _____
(Q) Final Hydrostatic Mud	<u>1560</u> PSI	Initial Shut-In <u>60</u>	Shale Packer _____

TRILOBITE TESTING INC. SHALL NOT BE LIABLE FOR DAMAGED OF ANY KIND OF THE PROPERTY OR PERSONNEL OF THE ONE FOR WHOM A TEST IS MADE, OR FOR ANY LOSS SUFFERED OR SUSTAINED, DIRECTLY OR INDIRECTLY, THROUGH THE USE OF ITS EQUIPMENT, OR ITS STATEMENTS OR OPINION CONCERNING THE RESULTS OF ANY TEST. TOOLS LOST OR DAMAGED IN THE HOLE SHALL BE PAID FOR AT COST BY THE PARTY FOR WHOM THE TEST IS MADE.

Approved By Brad Rine T-Started 21:45 p.m. Std. By _____
 Our Representative Michael A. St. T-Open 22:45 p.m. Acc. Chg: _____
 T-Pulled 03:45 a.m. Other: _____
 T-Out 05:45 a.m. Total: \$1,150.00

CHART PAGE
This is a photocopy of the actual AK-1 recorder chart.





TRILOBITE TESTING INC.

25386

P.O. Box 362 • Hays, Kansas 67601

Test Ticket

Well Name & No. Rosic #1-5 Test No. 4 Date 6-13-06
 Company Martin Drilling Co. Zone Tested L/KC H, I, J, K, L
 Address 250 N Water St 300 Wichita, KS 67202 Elevation 2068 KB 2063 GL
 Co. Rep / Geo. Brad Rine Rig Martin #8
 Location: Sec. 5 Twp. 9s Rge. 18w Co. Roofs State KS
 Comment: _____ Release date / time: _____

Interval Tested 3361 3470 Initial Str Wt./Lbs. 34,000 Unseated Str Wt/Lbs. 34,000
 Anchor Length 109' Wt. Set Lbs. 25,000 Wt. Pulled Loose/Lbs. 40,000
 Top Packer Depth 3356 Tool Weight 1,500
 Bottom Packer Depth 3361 Hole Size 7 7/8" ✓ Rubber Size 6 3/4" ✓
 Total Depth 3470 Wt. Pipe Run ✓ Drill Collar Run 150'
 Mud Wt. 9.1 LCM Trace Vis. 54 WL 2.5 Drill Pipe Size 4 1/4 x H Ft. Run 3205

Blow Description IF; Return blow to surface, died away in 2 min
ISI; No Return
FF; No Blow
FSI; No Return

Recovery - Total Feet 5 GIP 0 Ft. in DC _____ Ft. in DP _____
 Rec. 5' Feet of Mud %gas _____ %oil _____ %water 100 %mud _____
 Rec. _____ Feet of _____ %gas _____ %oil _____ %water _____ %mud _____
 Rec. _____ Feet of _____ %gas _____ %oil _____ %water _____ %mud _____
 Rec. _____ Feet of _____ %gas _____ %oil _____ %water _____ %mud _____
 Rec. _____ Feet of _____ %gas _____ %oil _____ %water _____ %mud _____
 BHT 101 °F Gravity _____ °API D @ _____ °F Corrected Gravity _____ °API
 RW _____ @ _____ °F Chlorides _____ ppm Recovery _____ Chlorides 6,500 ppm System

	AK-1	Alpine	Recorder No.	Test
(A) Initial Hydrostatic Mud		<u>1634</u> PSI	<u>6672</u>	<u>X #1,000</u>
(B) First Initial Flow Pressure		<u>16</u> PSI	(depth) <u>3361</u>	Jars _____
(C) First Final Flow Pressure		<u>20</u> PSI	Recorder No. _____	Safety Jt. <u>X #75.00</u>
(D) Initial Shut-In Pressure		<u>671</u> PSI	(depth) _____	Circ Sub <u>X / N/C</u>
(E) Second Initial Flow Pressure		<u>22</u> PSI	Recorder No. <u>11020</u>	Sampler _____
(F) Second Final Flow Pressure		<u>24</u> PSI	(depth) <u>3465</u>	Straddle _____
(G) Final Shut-In Pressure		<u>661</u> PSI	Initial Opening <u>30</u>	Ext. Packer _____
(Q) Final Hydrostatic Mud		<u>1596</u> PSI	Initial Shut-In <u>45</u>	Shale Packer _____

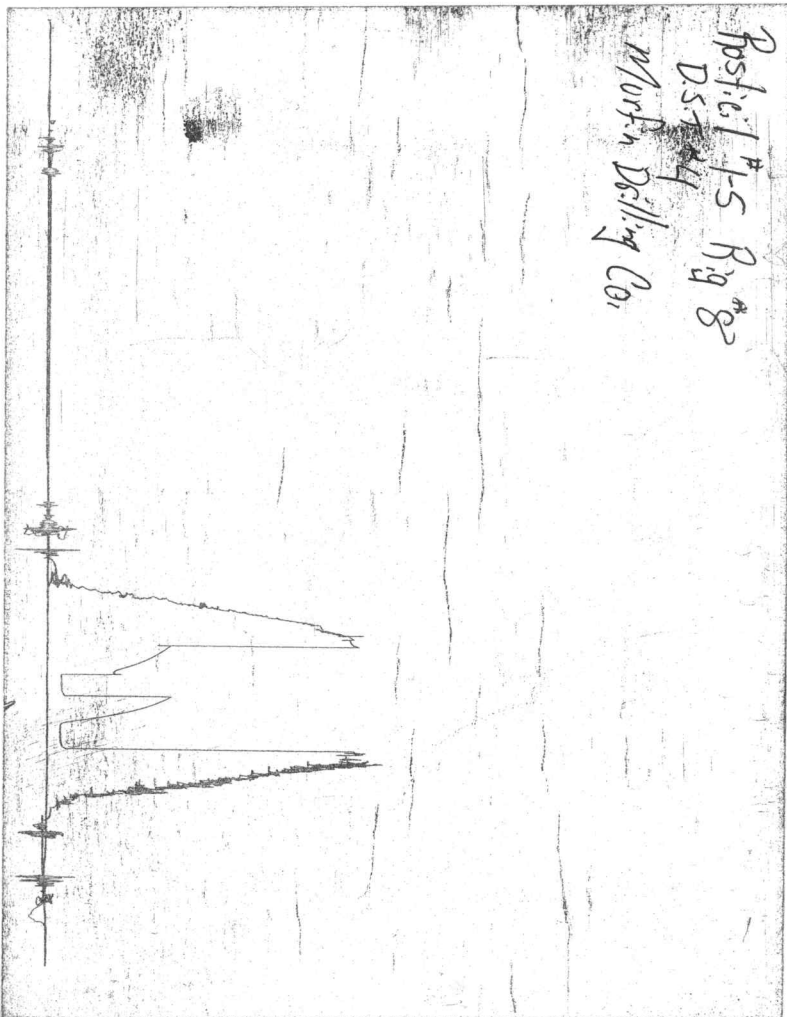
TRILOBITE TESTING INC. SHALL NOT BE LIABLE FOR DAMAGED OF ANY KIND OF THE PROPERTY OR PERSONNEL OF THE ONE FOR WHOM A TEST IS MADE, OR FOR ANY LOSS SUFFERED OR SUSTAINED, DIRECTLY OR INDIRECTLY, THROUGH THE USE OF ITS EQUIPMENT, OR ITS STATEMENTS OR OPINION CONCERNING THE RESULTS OF ANY TEST. TOOLS LOST OR DAMAGED IN THE HOLE SHALL BE PAID FOR AT COST BY THE PARTY FOR WHOM THE TEST IS MADE.

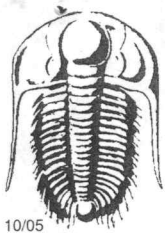
Final Flow 30 Ruined Packer _____
 Final Shut-In 45 Mileage 60 - #75.00
T-On Location 16:00 p.m Sub Total: _____
 T-Started 17:05 p.m Std. By _____
 T-Open 20:40 p.m Acc. Chg: _____
 T-Pulled 22:10 p.m Other: _____
 T-Out 24:10 a.m Total: #1150.00

Approved By Brad Rine
 Our Representative Michael A. G. E.

CHART PAGE

This is a photocopy of the actual AK-1 recorder chart.





TRILOBITE TESTING INC.

P.O. Box 362 • Hays, Kansas 67601

25387

Test Ticket

Well Name & No. Basilic # 1-5 Test No. 5 Date 6-15-06
 Company Murkin Drilling Co. Zone Tested Arbutle
 Address 250 N Water St 300 Wichita, K.S 67202 Elevation 2068 KB 2063 GL
 Co. Rep / Geo. Brad Rine Rig Murkin #8
 Location: Sec. 5 Twp. 9s Rge. 18w Co. Rooks State KS
 Comment: _____ Release date / time: _____

Interval Tested 3461 3505 Initial Str Wt./Lbs. 34,000 Unseated Str Wt/Lbs. 34,000
 Anchor Length 44' Wt. Set Lbs. 25,000 Wt. Pulled Loose/Lbs. 40,000
 Top Packer Depth 3456 Tool Weight 1,500
 Bottom Packer Depth 3461 Hole Size 7 7/8" ✓ Rubber Size 6 3/4" ✓
 Total Depth 3505 Wt. Pipe Run ✓ Drill Collar Run 150'
 Mud Wt. 9.1 LCM 2 Vis. 55 WL 3.8 Drill Pipe Size 4 1/2" x H Ft. Run 3295'

Blow Description IF: Return blow to surface, died away in 10 min.
IS: No return
FF: No blow
ISE: No return

Recovery - Total Feet	GIP	Ft. in DC	Ft. in DP
Rec. <u>5'</u>	Feet of <u>mud</u>	%gas	%oil %water <u>100</u> %mud
Rec. _____	Feet of _____	%gas	%oil %water _____ %mud
Rec. _____	Feet of _____	%gas	%oil %water _____ %mud
Rec. _____	Feet of _____	%gas	%oil %water _____ %mud
Rec. _____	Feet of _____	%gas	%oil %water _____ %mud

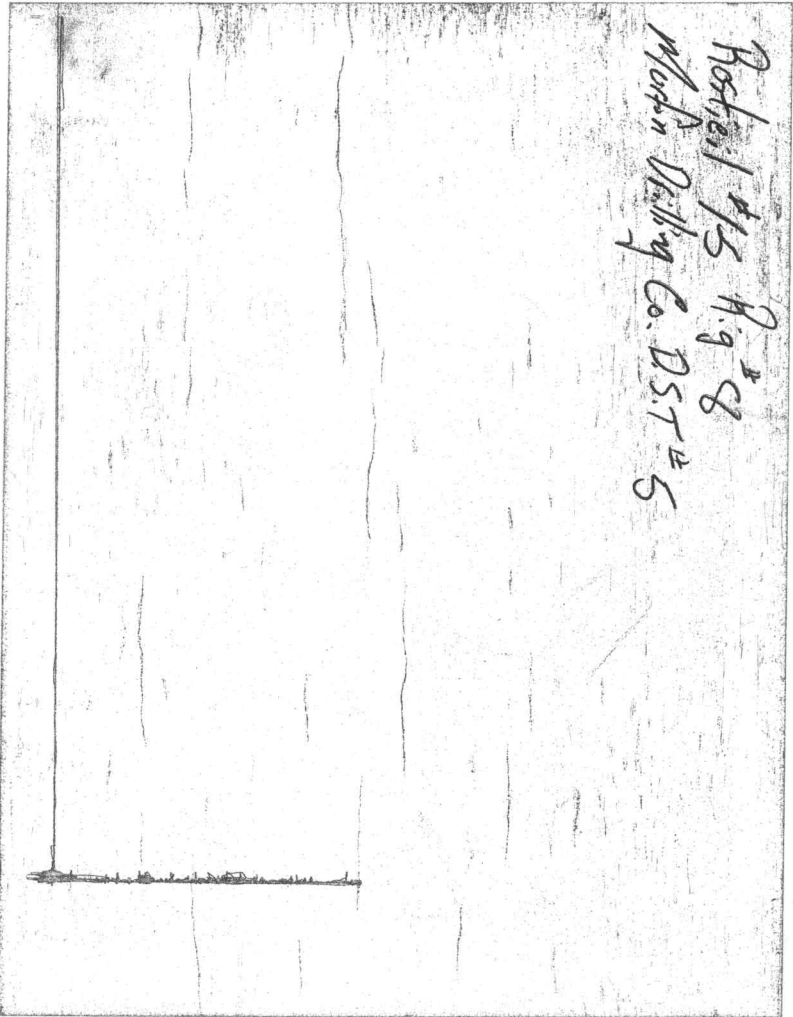
BHT 100 °F Gravity _____ °API D @ _____ °F Corrected Gravity _____ °API
 RW _____ @ _____ °F Chlorides _____ ppm Recovery _____ Chlorides 6500 ppm System

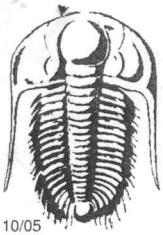
	AK-1	Alpine	Recorder No.	Test
(A) Initial Hydrostatic Mud	<u>1704</u>	PSI	<u>6672</u>	<u>x 1,000^{psi}</u>
(B) First Initial Flow Pressure	<u>17</u>	PSI	(depth) <u>3461</u>	Jars _____
(C) First Final Flow Pressure	<u>19</u>	PSI	Recorder No. _____	Safety Jt. <u>x 75.00</u>
(D) Initial Shut-In Pressure	<u>38</u>	PSI	(depth) _____	Circ Sub <u>x / N/C</u>
(E) Second Initial Flow Pressure	<u>18</u>	PSI	Recorder No. <u>11020</u>	Sampler _____
(F) Second Final Flow Pressure	<u>20</u>	PSI	(depth) <u>3500</u>	Straddle _____
(G) Final Shut-In Pressure	<u>30</u>	PSI	Initial Opening <u>30</u>	Ext. Packer _____
(Q) Final Hydrostatic Mud	<u>1675</u>	PSI	Initial Shut-In <u>45</u>	Shale Packer _____
			Final Flow <u>30</u>	Ruined Packer _____
			Final Shut-In <u>60</u>	Mileage <u>60 - 75.00</u>

TRILOBITE TESTING INC. SHALL NOT BE LIABLE FOR DAMAGED OF ANY KIND OF THE PROPERTY OR PERSONNEL OF THE ONE FOR WHOM A TEST IS MADE, OR FOR ANY LOSS SUFFERED OR SUSTAINED, DIRECTLY OR INDIRECTLY, THROUGH THE USE OF ITS EQUIPMENT, OR ITS STATEMENTS OR OPINION CONCERNING THE RESULTS OF ANY TEST. TOOLS LOST OR DAMAGED IN THE HOLE SHALL BE PAID FOR AT COST BY THE PARTY FOR WHOM THE TEST IS MADE.

Approved By Brad Rine T-Started 11:00 a.m. Std. By _____
 Our Representative Michael A Shin T-Open 01:10 p.m. Acc. Chg: _____
 T-Pulled 16:55 p.m. Other: _____
 T-Out 17:30 p.m. Total: 1150.00

CHART PAGE
This is a photocopy of the actual AK-1 recorder chart.





TRILOBITE TESTING INC.

P.O. Box 362 • Hays, Kansas 67601

25388

Test Ticket

Well Name & No. Bosticil #1-5 Test No. 6 Date 6-16-06
 Company Martin Drilling Co. Zone Tested Arbuckle
 Address 250 N Water St 300 Wichita, KS 67202 Elevation 2068 KB 2063 GL
 Co. Rep / Geo. Brad Rine Rig Martin #8
 Location: Sec. 5 Twp. 9S Rge. 18W Co. Robss State KS
 Comment: _____ Release date / time: _____

Interval Tested 3505 3520 Initial Str Wt./Lbs. 30,000 Unseated Str Wt/Lbs. 30,000
 Anchor Length 15' Wt. Set Lbs. 25,000 Wt. Pulled Loose/Lbs. 40,000
 Top Packer Depth 3500 Tool Weight 1500
 Bottom Packer Depth 3505 Hole Size 7 7/8" Rubber Size 6 3/4"
 Total Depth 3520 Wt. Pipe Run Drill Collar Run 150'
 Mud Wt. 9.1 LCM 2 Vis. 55 WL 3.8 Drill Pipe Size 4 1/2 x H Ft. Run 3363

Blow Description IF; Return Blow to surface, died away in 5 min.
IS; No Return
FF; No blow
ISI; No Return

Recovery - Total Feet 1' GIP _____ Ft. in DC _____ Ft. in DP _____
 Rec. 1' Feet of Mud %gas _____ %oil _____ %water 100 %mud _____
 Rec. _____ Feet of _____ %gas _____ %oil _____ %water _____ %mud _____
 Rec. _____ Feet of _____ %gas _____ %oil _____ %water _____ %mud _____
 Rec. _____ Feet of _____ %gas _____ %oil _____ %water _____ %mud _____
 Rec. 102 Feet of _____ %gas _____ %oil _____ %water _____ %mud _____
 BHT _____ °F Gravity _____ °API D @ _____ °F Corrected Gravity _____ °API
 RW _____ @ _____ °F Chlorides _____ ppm Recovery _____ Chlorides 6,500 ppm System

	AK-1	Alpine	Recorder No.	Test
(A) Initial Hydrostatic Mud	<u>1710</u>	PSI	<u>6672</u>	<u>X \$1,000.00</u>
(B) First Initial Flow Pressure	<u>12</u>	PSI	(depth) <u>3505</u>	Jars _____
(C) First Final Flow Pressure	<u>13</u>	PSI	Recorder No. _____	Safety Jt. <u>X \$75.00</u>
(D) Initial Shut-In Pressure	<u>19</u>	PSI	(depth) _____	Circ Sub <u>X / N/C</u>
(E) Second Initial Flow Pressure	<u>13</u>	PSI	Recorder No. <u>11020</u>	Sampler _____
(F) Second Final Flow Pressure	<u>16</u>	PSI	(depth) <u>3515</u>	Straddle _____
(G) Final Shut-In Pressure	<u>20</u>	PSI	Initial Opening <u>30</u>	Ext. Packer _____
(Q) Final Hydrostatic Mud	<u>1668</u>	PSI	Initial Shut-In _____ <u>45</u>	Shale Packer _____
			Final Flow <u>30</u>	Ruined Packer _____
			Final Shut-In _____ <u>60</u>	Mileage <u>60 - \$75.00</u>
			T-On Location <u>23:30 p.m.</u>	Sub Total: _____
			T-Started <u>01:15 a.m.</u>	Std. By _____
			T-Open <u>03:00 a.m.</u>	Acc. Chg: _____
			T-Pulled <u>05:45 a.m.</u>	Other: _____
			T-Out <u>07:20 a.m.</u>	Total: <u>\$1150.00</u>

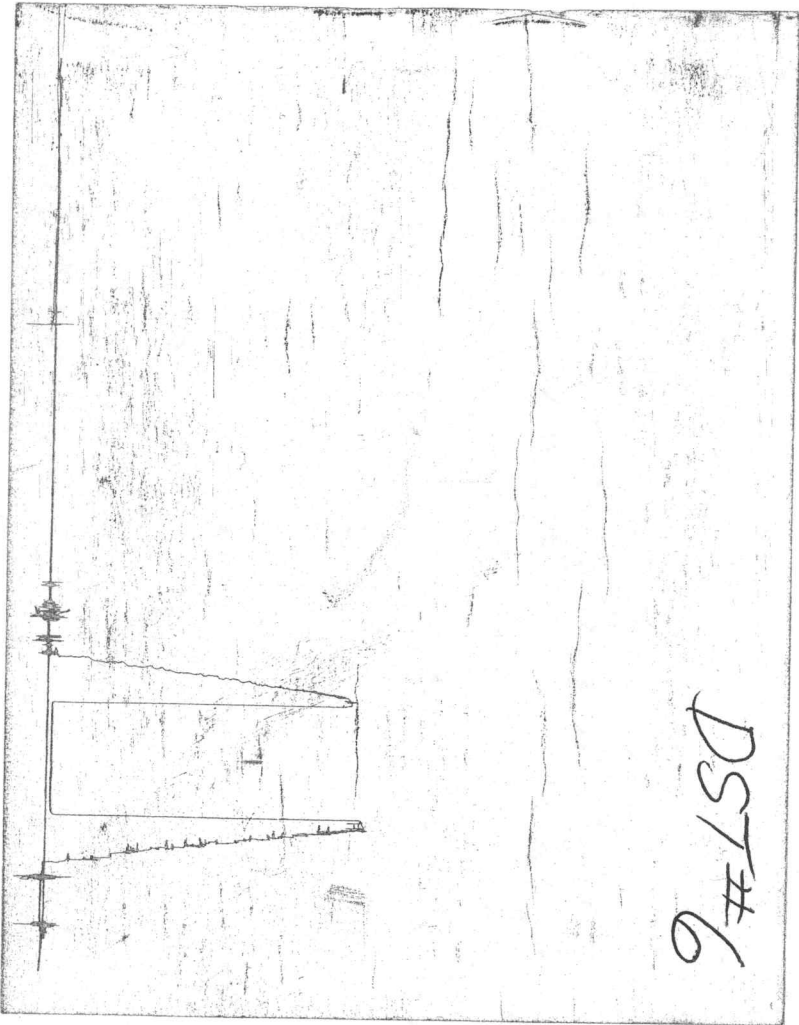
TRILOBITE TESTING INC. SHALL NOT BE LIABLE FOR DAMAGED OF ANY KIND OF THE PROPERTY OR PERSONNEL OF THE ONE FOR WHOM A TEST IS MADE, OR FOR ANY LOSS SUFFERED OR SUSTAINED, DIRECTLY OR INDIRECTLY, THROUGH THE USE OF ITS EQUIPMENT, OR ITS STATEMENTS OR OPINION CONCERNING THE RESULTS OF ANY TEST. TOOLS LOST OR DAMAGED IN THE HOLE SHALL BE PAID FOR AT COST BY THE PARTY FOR WHOM THE TEST IS MADE.

Approved By Brad Rine
 Our Representative Michael A. Shi

CHART PAGE

This is a photocopy of the actual AK-1 recorder chart.

DST#6



Rosticil 1-5