

CORAL PRODUCTION CORPORATION**Church No. 1**

Section 31, T9S, R18W

Rooks County, Kansas

March, 2006

Well Summary

The Coral Production Corporation, Church No. 1 was drilled as a wildcat based on 3-d seismic to a total depth of 3760' in the Arbuckle Formation without any problems. One of the closest offsets was the Coral Production Corp., Stepp No. 1 – approximately 4000' to the W,SW. Formation tops from the Tarkio to the Stark Shale ran consistently 9' to 13' high relative to this offset. The BKC and Marmaton came in 7' high while the Arbuckle ran even. Formation tops came in consistently 13' to 19' high relative to the Coral Production, Corp., Dauwg No. 1 – app. 4500' to the South.

Hydrocarbon shows from the Toronto through the Arbuckle were documented(attached striplog) and drillstem tested and deemed non-commercial.

An excellent show occurred in the Arbuckle and consists of a Dolomite – Tan, light brown, buff, occasionally orange to yellow, coarsely crystalline with intergrown crystals, predominantly hard and dense, clean, tight to occasional trace intercrystalline porosity, occasional good vuggy porosity, abundant very black heavy oil stain and abundant heavy black live oil in vugs and on fracture faces with with crystalline development, abundant heavy black free oil in samples, very dark speckled yellow to mottled orange hydrocarbon fluorescence(2% sample), excellent streaming cut. This interval was drill stem tested and recovered 2525' of water.

The Coral Production, Corp. Church No. 1 was plugged and abandoned 3/27/06.

Respectfully Submitted,



Peter Debenham

RECEIVED
APR 13 2006
KCC WICHITA

WELL DATA

Operator: Coral Production Corporation, 1600 Stout St., Suite 1500, Denver, CO 80202, 303/623-3573, President/owner Jim Weber

Prospect Geologist: Tim Lauer – Wichita, KS

Well: Church No. 1

Location: 250'FSL & 2025'FEL, Section 31, T9S, R18W, Rook County, Kansas – W, SW of Plainville, KS

API No.: 15-163-23511-0000

Elevation: Ground Level 2188', Kelly Bushing 2193'

Contractor: VonFeldt Drilling, Inc., Rig No. 1, Type: Double jackknife, double stand, Toolpusher – Doug Budig, Drillers: Mick Haynes, Arley Kelley, Carrett Urbanek

Spud Date: 3/18/03

Total Depth: 3/26/06, Driller 3760', Arbuckle Fm.

Casing Program: 8 5/8" surface casing set to ~~234'~~ 237

Mud Program: Andy's Mud & Chemical Co., Engineer Andy Westly & Kirk Werth, Type Chemical Pac – displaced 2800'.

Drillstem Testing: Trilobite, Engineer Ray Schwager, DST No. 1(3371'-3455') Toronto, Lnsng A&B, DST No. 2(3456'-3500') Lnsng C&F, DST No. 3(3552'-3606') Lnsng H,I,J, DST No. 4(3604'-3700') Lnsng K & Congl., DST No. 5(3639'-3747'), Congl. - Simpson - misrun, DST No.6(3612'-3747'), Congl. & Simpson, DST No. 7(3613'-3760'), Arbuckle

Wellsite Consultant: Peter Debenham, P.O. Box 350, Drake, CO 80515, 720/220-4860, Petrolific@gmail.com

Samples: 20' to 3200', 10' to TD – one dry cut save with Coral Production.

Electric Logs: ELI Wireline Services, engineer Rupp – Hays, 1) Dual Induction, 2) Neutron/Density

Status: P&A 3/27/06.

WELL CHRONOLOGY

<u>MIDNIGHT</u>	<u>DATE</u>	<u>DEPTH</u>	<u>FOOTAGE</u>	<u>RIG ACTIVITY</u>
	3/18	237'	237'	Tear down and move from Stepp No. 1. Rig up on Church No. 1. Spud in 12 1/4" hole to 237' and circulate. Work on shifter. Jet Cellar. Drop survey(1 deg.) and trip for surface casing. Run 5 joints of 8 5/8" set at 234' and cement – did circulate. Plug down 6:45 pm.
	3/19	1760'	1523'	Wait on cement. Drill 20' cement and plug and drill 7 7/8" hole to 1760'. Jet pits and service.
	3/20	2658'	898'	Lay down washed joint and fix spinning chain. Jet pits and set in sample box. Jet and clean screen. To 2658' and drilling ahead.
	3/21	3255'	597'	Jet and clean suction.
	3/22	3455'	200'	Circulate for samples at 3350', 3400' and 3455'. Short trip and circulate. Drop survey(bullseye) and strap out for DST No. 1(3371'-3455') – no depth correction. Run test.
	3/23	3515'	60'	Run test and pull and lay down tool. Fix circulating drum hose and wash floor. Extremely muddy location. Trip in with collars and break circulation. Drill to 3500' and circulate and trip for DST No. 2(3456'-3500'). Sack out 12 stands of water. Break down and lay down tool and wash floor. Trip in with Bit No. 4, break circulation and drilling ahead at 3515'.
	3/24	3659'	144'	Circulate for samples at 3604' and 3606'. Trip for DST No. 3(3552'-3606'). Run test and pull tool. Trip in and break circulation.
	3/25	3747'	88'	Circulate for samples at 3670' and 3700'. Trip for DST No. 4(3604'-3700') and run same. Pull and lay down tool. Trip in and circulate. Circulate for samples at 3730', 3740' and 3747'. Trip for DST No. 5(3639'-3747') – misrun, packer failer. Pull tool.
	3/26	3760'TD	13'	Change out test interval and run DST No. 6(3612'-3747'). Pull and break down tool. Trip in and circulate. Circulate for samples at 3755' and 3760'TD. Trip for DST No. 7(3613'-3760') and run test. Pull tool and run elogs. Trip to bottom and circulate – extremely muddy location – cat pulling tester and loggers off location.
	3/27	TD		Trip out laying down. Plug and abandon well. Rig down.

MUD PROPERTIES

<u>DATE</u>	<u>DEPTH</u>	<u>WT</u>	<u>VIS</u>	<u>PV</u>	<u>YP</u>	<u>pH</u>	<u>WL</u>	<u>CL</u>	<u>LCM-LBS/BBL</u>
3/21	3078'	8.7	54	22	12	10.0	8.0	1500	1/8
3/22	3408'	9.0	48	22	14	10.0	8.8	1500	1/8
3/23	3500'	9.3	49	24	12	10.0	8.8	2000	1/8
3/24	3606'	9.4	52	23	16	9.5	8.8	4000	tr
3/25	3701'	9.3	64	22	13	10.0	8.8	4000	1/8
3/26	3760'	9.2	46	21	13	10.0	8.8	4000	1/8

BIT RECORD

<u>NO.</u>	<u>MAKE</u>	<u>TYPE</u>	<u>SIZE</u>	<u>OUT</u>	<u>FOOTAGE</u>	<u>HOURS</u>
1	Tooth	RR	12 ¼"	237'	237'	3 ¼
2	J2	HAQL	7 7/8"	3455'	3218'	70 ¼
3	J2	HAQL	7 7/8"	3760'	305'	16.5
Total Rotating Hours:						89.5
Average:						42.0 Ft/Hr

DEVIATION RECORD - degrees

237' 1, 3455' 0,

DRILL STEM DATA

DST NO. 1:(3371 - 3455'), Toronto, LKC "B"

Type: Conventional Bottom Hole, Times: 30-45-60-90

Blows: IF – Weak – gradually built to 1 ¼".

I & FSI – no blowback.

FF – Gradually built to 3"/

<u>PERIOD</u>	<u>PSI</u>
IH	1610
IF	20 - 39
ISI	776
FF	39 - 66
FSI	708
FH	1576

BHT 97 deg. F.

RECOVERY: 105' gas in pipe, 45' of oil & gas cut mud(5% gas, 10% oil), 60' of highly oil & gas cut mud(5% gas, 35% oil).

DST NO. 2:(3456' – 3500'), LKC "C" & "F"

Type: Conventional Bottom Hole, Times: 30-45-60-90

Blows: IF – Bottom of bucket in 12 minutes and remained.

FF – Slowly built to bottom of bucket in 26 minutes.

ISI – Weak ¼" blow to no blow at end of period.

FSI – No blowback.

<u>PERIOD</u>	<u>PSI</u>
IH	1658
IF	31 - 176
ISI	724
FF	181 - 372
FSI	724
FH	1637

BHT 103 deg. F.

RECOVERY: 2' of clean oil, 43' of muddy water with a slight oil scum, 780' water – Rw 0.14 Ohms at 44 deg. f., 88,000 ppm CL

DST NO. 3:(3552' – 3606'), LKC "H,I,J"

Type: Conventional Bottom Hole, Times: 30-45-30-60

Blows: IF – Weak ¼" throughout.

FF – Surface blow died in 10 minutes – no blowback.

<u>PERIOD</u>	<u>PSI</u>
IH	1710
IF	18 - 20
ISI	447
FF	21 - 20
FSI	350
FH	1670

BHT 96 deg. F.

RECOVERY: 10' of slightly oil cut mud(1% oil).

DST NO. 4:(3604' – 3700'), LKC "K" & Conglomerate

Type: Conventional Bottom Hole, Times: 30-45-30-60

Blows: IF – Weak ¼" throughout.

FF – No blow.

<u>PERIOD</u>	<u>PSI</u>
IH	1729
IF	19 - 20
ISI	596
FF	22 - 23
FSI	575
FH	1713

BHT 96 deg. F.

RECOVERY: 10' of slightly oil cut mud(1% oil)

DST NO. 5:(3639' – 3747'), Conglomerate & Simpson Dolomite

Type: Conventional Bottom Hole

Misrun – packer failer

DST NO. 6:(3612' – 3747'), Conglomerate & Simpson

Type: Conventional Bottom Hole, Times: 30-45-60-90

Blows: IF – Weak throughout – ½" – 1".

FF – Weak ¼" – ½" blow.

<u>PERIOD</u>	<u>PSI</u>
IH	1773
IF	68 - 68
ISI	1051
FF	68 - 68
FSI	1051
FH	1719

BHT 105 deg. F.

RECOVERY: 40' of slightly oil cut mud(2% oil)

DST NO. 7:(3613' – 3760'), Arbuckle

Type: Conventional Bottom Hole, Times: 30-45-60-90

Blows: IF – Strong – off bottom of bucket in 1 minute.

FF – Bottom of bucket in 2 minutes.

ISI – Weak surface blowback. No blowback in FSI

<u>PERIOD</u>	<u>PSI</u>
IH	1739
IF	205 - 891
ISI	1106
FF	905 - 1109
FSI	1112
FH	1710

BHT 103 deg. F.

RECOVERY: 230' muddy water, 2295' water – Rw 0.32 Ohms at 53 deg. F., 26,000 ppm CL.

ELECTRIC LOG FORMATION TOPS- KB Elev. 2193'

<u>FORMATION</u>	<u>Church No. 1</u> <u>DEPTH</u>	<u>DATUM</u>	<u>*Stepp No. 1</u> <u>DATUM</u>	<u>POSITION</u>
Tarkio	3004'	-811'	-821'	+10'
Topeka	3147'	-954'	-967'	+13'
Deer Creek	3197'	-1004'	-1017'	+13'
LaCompton	3260'	-1067'	-1080'	+13'
Oread	3308'	-1115'	-1127'	+12'
Heebner	3362'	-1169'	-1182'	+13'
Toronto	3382'	-1189'	-1202'	+13'
Lansing	3403'	-1210'	-1222'	+12'
B	3437'	-1244'	-1256'	+12'
C	3457'	-1264'	-1274'	+10'
F	3478'	-1285'	-1294'	+9'
G	3496'	-1303'	-1312'	+9'
H	3536'	-1343'	-1352'	+9'
I	3556'	-1363'	-1373'	+10'
J	3568'	-1375'	-1387'	+12'
Stark Shale	3586'	-1393'	-1402'	+9'
K	3595'	-1402'	-1411'	+9'
L	3619'	-1426'	-1432'	+6'
BKC	3634'	-1441'	-1449'	+8'
Marmaton	3643'	-1450'	-1457'	+7'
Conglomerate	3660'	-1467'	-1487'	+20'
Arbuckle(spl)	3755'	-1562'	-1562'	0'
TD	3760'	-1567'		

*Coral Production Corp., Stepp No. 1, 1620'FNL & 80'FWL, Sec. 6, 10S, 18W – app. 4000' to the W,SW, KB Elev. 2200'

LITHOLOGY DESCRIPTION

SAMPLES ARE LAGGED

CORRECTED E-LOG FORMATION TOPS

*INDICATES HYDROCARBON SHOW

Note – Depths are 4' to 6' low relative to elogs due to pipe tally error.

Deer Creek 3197'

3200-3228 SHALE - Blk dark gray to gygn brown hard blocky to sbfis carbonaceous calcareous interbed with LIMESTONE to Med brown to gray gygn micr crpxln hard dense argillaceous to marly in part tight no show

3228-3248 LIMESTONE - Med to light brown coarse crystalline sucrosic brittle clean to argillaceous material dolc fossils gd intxln and fine vug porosity no fluorescence no stain or cut

3248-3266 SHALE - Gy to brown gygn firm blocky silty pyrite interbed with LIMESTONE - Mot brown to gray micr fine crystalline hard dense fossils carbonaceous argillaceous to marly in part tight no show

LaCompton 3260'

3266-3288 LIMESTONE - Mot brown buff micr crpxln hard dense silica clean to argillaceous fossils pyrite in part tight no show occasional interbed with SHALE - as above

3288-3296 SHALE - Brn to gray gygn occasional redbrn blocky calcareous silty

3296-3310 LIMESTONE - Mot brown to gray gygn biomcr fine crystalline hard dense argillaceous to marly in part fossils silty tight no show interbed with SHALE - as above

Oread 3308'

3310-3316 *LIMESTONE - Med to light mottled brown buff micxln micsuc brittle clean sbchky in part fossils oolites in part trace intxln and isol pinpoint vug porosity trace moldic porosity trace(1% sample) dull orange hydrocarbon fluorescence faint strmg cut trace isol black oil residue in vug and mottled oil stain weak show

3316-3332 LIMESTONE - Brn to gray mottled crpxln hard dense silica pyrite argillaceous tight no show with trace CHRT - Mlky brown to gray hard crystalline

3332-3350 LIMESTONE - Med to light mottled brown to gray biomcr fine crystalline hard dense clean to marly in part fossils tight trace isol black oil stain in pinpoint vug porosity(trace) predominant hard and tight occasional interbed with SHALE - Blk dark gray firm sbfis to blocky calcareous carbonaceous

3350-3366 LIMESTONE - Med to light mottled brown to gray biomcr fine crystalline hard dense clean to marly in part fossils tight trace isol black oil stain in pinpoint vug porosity(trace) predominant hard and tight occasional interbed with SHALE - Blk dark gray firm sbfis to blocky calcareous carbonaceous

Heebner 3362'

3366-3368 SHALE - Blk firm sbfis carbonaceous

3368-3386 LIMESTONE - Med to dark brown gray rpxln hard dense argillaceous to marly fossils tight no show interbed with SHALE to Gy gygn occasional brown to black hard blocky calcareous carbonaceous

Toronto 3382'

3386-3394 *LIMESTONE - Lt mottled brown buff biomicr fine crystalline clean fossils with trace inpart porosity micsuc in part with intxln porosity very pale goldbrn hydrocarbon fluorescence(4% sample) fair strmg cut trace even brown matrix oil stain and live oil

3394-3402 LIMESTONE - Med brown to gray crpxln hard dense silica clean fossils occasional trace isol pinpoint vug porosity trace hydrocarbon fluorescence stain and cut(few pieces) weak show pred silica and tight

Lansing 3403'

3402-3410 SHALE - Gy gygn brown firm blocky silty calcareous with trace CHRT - Mlky gray to brown hard crystalline

3410-3416 *LIMESTONE - Lt mottled brown buff biomicr fine crystalline micsuc in part clean very fossils and oolites with inpart and moldic porosity trace intxln porosity pale orange hydrocarbon fluorescence(2% sample) brown oil stain and trace live oil fair strmg cut with SHALE - Dk brown black firm sbfis

3416-3432 LIMESTONE - Lt/medium brown buff crpxln hard dense clean silica in part poor vis porosity occasional trace isol oil stain and cut with CHRT - gray buff mlky hard crystalline

3432-3443 SHALE - Dk gray gygn brown occasional black hard sbfis to blocky calcareous carbonaceous silty interbed with LIMESTONE - as above no show

"B" 3437'

3443-3458 *LIMESTONE - Lt brown oomicr micxln rexlzd in part micsuc in part brittle clean gd oomoldic and trace inpart porosity mottled brown oil stain pale orange hydrocarbon fluorescence gd strmg cut trace lower oil show in 2% sample with LIMESTONE - Brn hard crpxln dense silica tight no show

3458-3464 SHALE - Dk gray gygn blocky calcareous silty

"C" 3457'

3464-3474 *LIMESTONE - Med mottled bn micxln micsuc sbchky brittle clean fossils trace intxln porosity to predominant tight trace medium mottled brown oil stain and trace live oil gd strmg cut(5% sample) with LIMESTONE - Brn crpxln hard dense tight

"F" 3478'

3474-3488 LIMESTONE - Lt brown buff gray fine crystalline sbchky clean to argillaceous fossils tight no show with LIMESTONE - Lt brown tan crpxln hard dense silica tight no show trace CHRT - Wh brown crystalline interbed with SHALE to Blk dark gray to gygn firm blocky silty

3488-3496 *LIMESTONE - Lt to medium mottled brown micxln micsuc sbchky clean very fossils and oolites moldic and inpart porosity trace intercrystalline porosity with even brown mtrx oil stain pale mottled orange to yellow hydrocarbon fluorescence(4% sample) fair strmg cut trace live oil

3496-3500 SHALE - Gy gygn firm sbfis silty

3500-3528 LIMESTONE - Wh to light brown buff crpxln to micxln in part occasional micsuc and sbchky predominant silica and tight clean fossils occasional trace intxln porosity no fluorescence no stain or cut

3528-3542 SHALE - Med to dark gray gygn mottled brown hard blocky calcareous fossils in part trace LIMESTONE - Pred as above silica tight no show

3542-3558 LIMESTONE - Mot brown to gray fine crystalline hard dense silica clean fossils pyrite poor vis porosity no fluorescence no stain or cut

3558-3560 *LIMESTONE - Lt mottled brown to gray micr micxln very fine sucrosic in part fossils predominant silica and tight occasional trace intxln and pinpoint porosity trace mottled brown oil stain pale orange hydrocarbon fluorescence(2% sample) slow cut weak show

3560-3574 *LIMESTONE - Lt mottled brown buff oomicr fine crystalline brittle clean fossils very oolites with trace moldic porosity trace inxln porosity medium brown oil stain(5% sample) speck yellow hydrocarbon fluorescence fair strmg cut weak show with LIMESTONE - Wh light brown crpxln hard dense silica tight

“J” 3568’

3574-3578 *LIMESTONE - Med to dark mottled brown oomicr crpxln to micxln in part micsuc in part brittle clean very oolites with exc oomoldic porosity trace intxln porosity even dark brown oil stain and trace live oil speck yellow to mottled brown hydrocarbon fluorescence(8% sample) exc strmg cut oil odor

3578-3590 LIMESTONE - Med to light brown crpxln hard dense silica clean tight no show trace CHRT - Brn to gray mlky hard crystalline

Stark SH 3586’

3590-3602 SHALE - Mot gray to gygn ma redbrn to brown varic in part blocky silty

“K” 3595’

3602-3614 LIMESTONE - *Wh light brown fine crystalline sbchky clean fossils tight/occasional trace intxln porosity occasional trace isol oil stain with fluorescence and cut(1% sample) weak show predominant silica and tight

3614-3640 SHALE - Brn to redbrn gray gygn to green hard blocky earthy silty interbed with LIMESTONE to Wh light brown micr fine crystalline sbchky clean fossils pyrite tight no show trace CHRT

BKC 3634’

3640-3646 SHALE - Redbrn gray to gygn earthy blocky silty calcareous

Marmaton 3643’

3646-3650 LIMESTONE - Med to light brown gray fine crystalline hard dense silica fossils oolites clean tight no show

3650-3664 SHALE - Redbrn gray to gygn earthy blocky silty calcareous with CHRT - Brn gray milky orange hard crystalline

Conglomerate 3660'

3664-3680 *Abt CHRT - Milky white gray brown orange to yellow varic hard crystalline occasional tripol with intxln porosity fine pinpoint porosity abt solid black oil residue exc cut dkmt brown to gold hydrocarbon fluorescence(10% sample) with SHALE - Redbrn to orange gray gygn blocky earthy silty

3680-3700 *Abt CHRT - Milky white gray brown orange to yellow varic hard crystalline occasional tripol with intxln porosity fine pinpoint porosity abt solid black oil residue exc cut dkmt brown to gold hydrocarbon fluorescence(10% sample) with SHALE - Redbrn to orange gray gygn blocky earthy silty

3700-3720 *Chrt - as above Wh and tripol in part with intxln porosity trace pinpoint vug porosity abt heavy mottled black oil stain and heavy black oil esd with exc strmg cut occasional pale yellow/blue hydrocarbon fluorescence with SHALE - Redbrn orange gray to green varic earthy blocky silty with trace DOLOMITE - Orng to brown mottled crpxln hard dense trace pinpoint porosity trace dull hydrocarbon fluorescence exc cut black oil stain and trace live oil

3720-3728 SHALE - Redbrn orange gray to green varic earthy blocky silty with trace DOLOMITE - as above CHRT

3728-3730 Tr LIMESTONE - Med brown mottled yelbrn fine crystalline brittle clean very oolites with intpart porosity abt black oil stain trace live oil

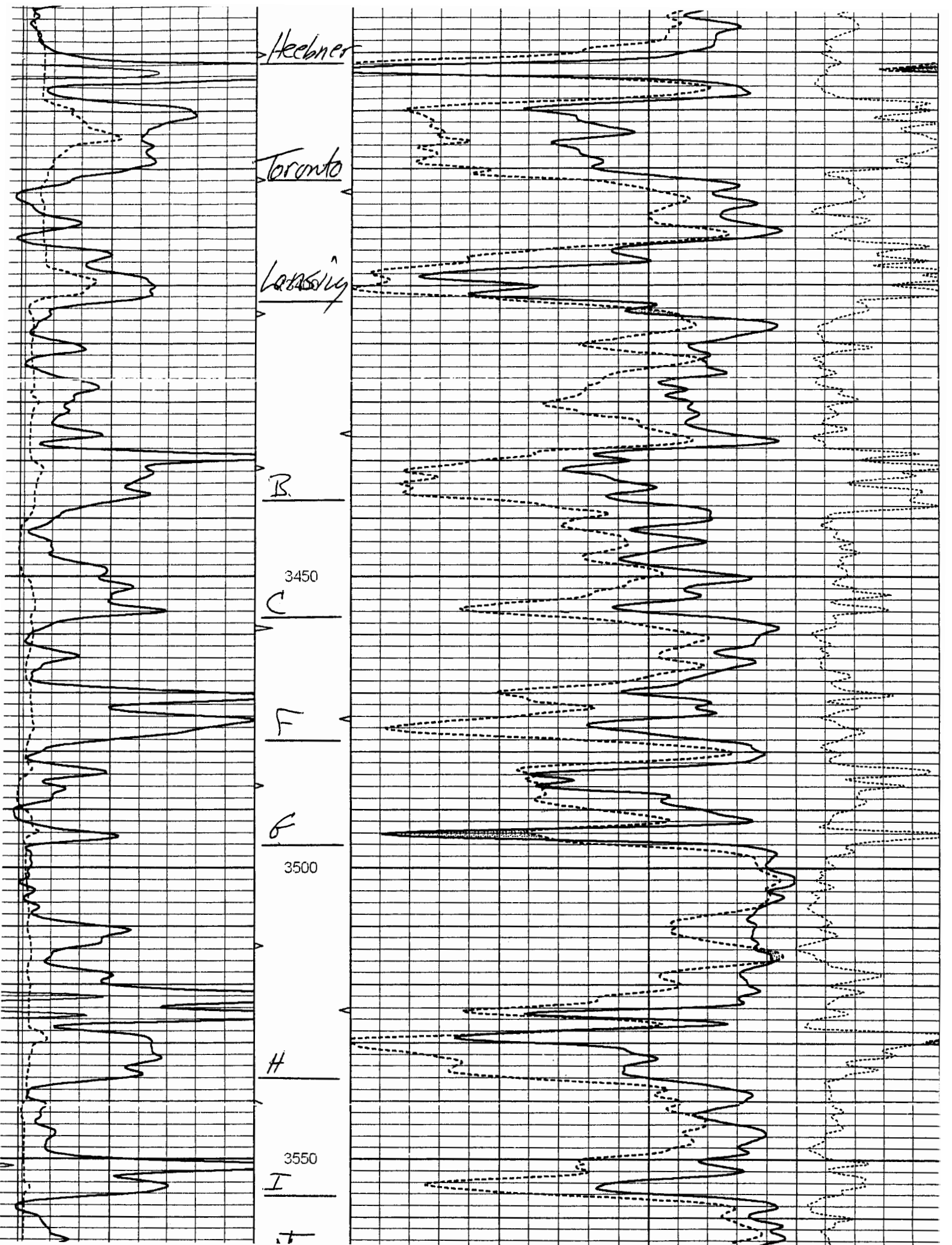
3730-3738 *DOLOMITE - Med mottled brown to orange medium to dark brown to redbrn occasional yellow varic in part coarse intgrown crystalline predominant hard and dense clean to argillaceous sndy occasional fine vug porosity with black oil stain trace heavy black oil dark mottled goldbrn hydrocarbon fluorescence(5% sample) exc strmg cut with abt varic CHRT - as above trace SANDSTONE - Clr very friable fill well sorted sbrnd to rounded grains silica cement clean gd intgran porosity no show with abt unconsl grains to poss cavings from uphole abt CHRT - as above Wh and tripol in part with crystalline porosity trace pinpoint vug porosity trace black oil residue and stain gd cut no fluorescence

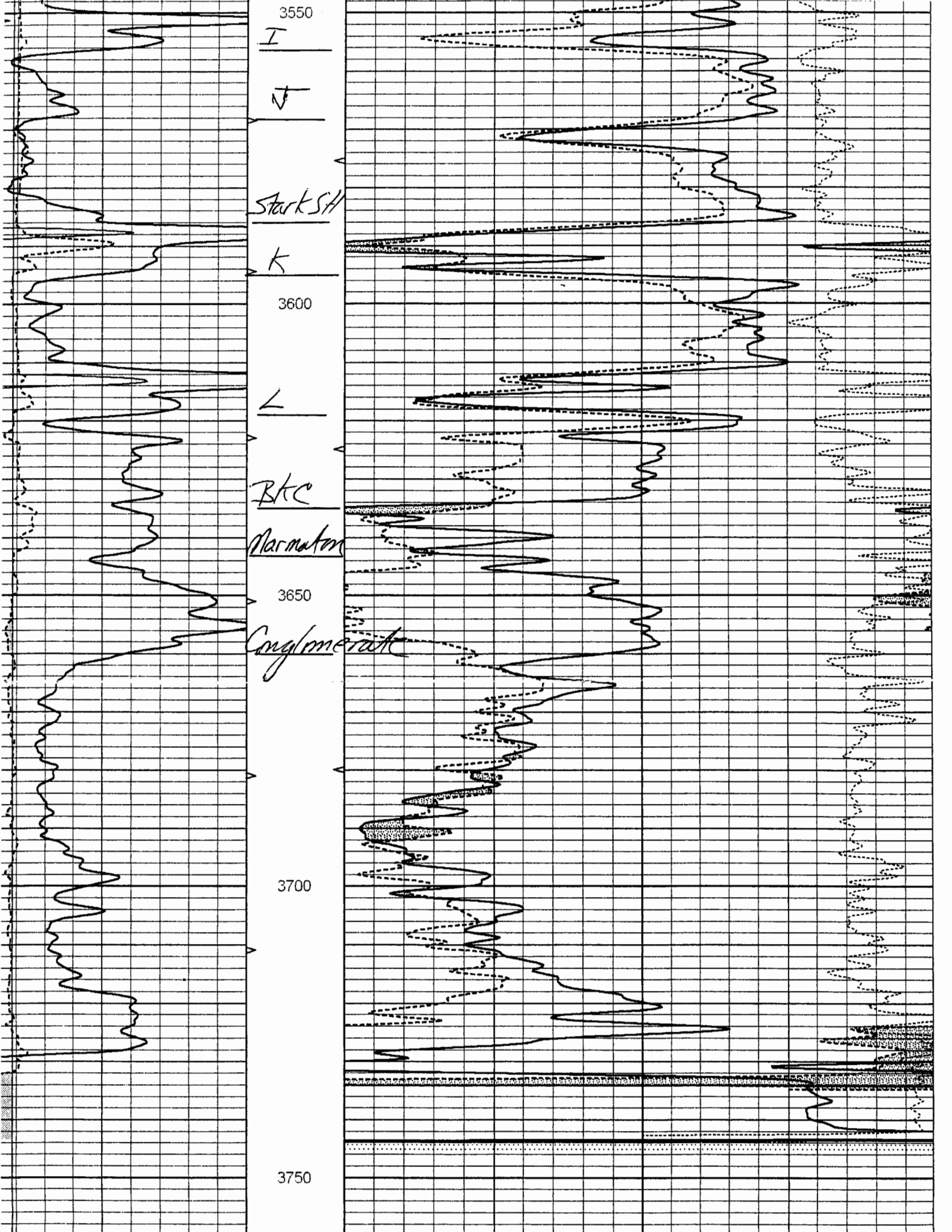
Simpson Shale

3738-3754 SHALE - Bri blgn firm sbfis waxy with varic SHALE to as above

Arbuckle 3755' - spl

3754-3760 *DOLOMITE - Tan light brown buff occasional orange to yellow coarse crystalline with intgrown crystals predominant hard and dense clean tight/occasional trace intxln porosity occasional gd vug porosity abt very black heavy oil stain and abt live oil in vugs and on fracture faces(10% sample) with crystalline dev abt heavy black free oil in spls dark speck yellow/mottled orange hydrocarbon fluorescence(2% sample) exc strmg cut CHRT to Brn translucent hard crystalline tripolitic in part





3550

I

J

Stark SA

K

3600

L

BKC

Marmaton

3650

Conglomerate

3700

3750