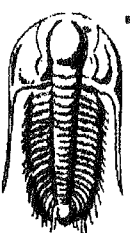


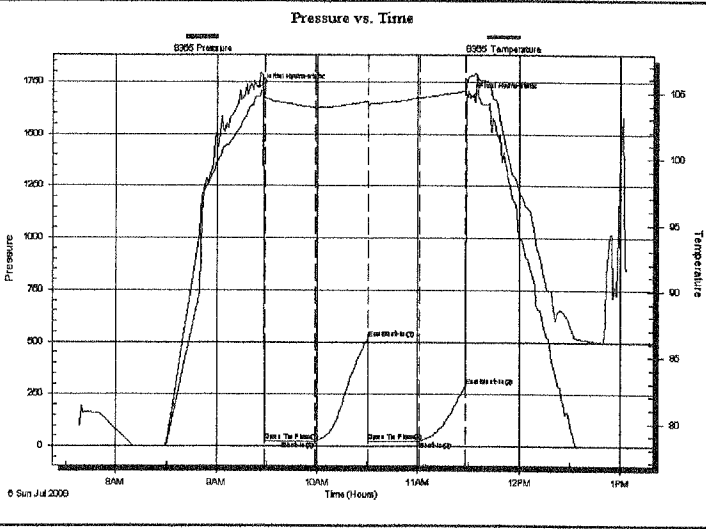
|  |  |   |
|--|--|---|
|  <p><b>TRILOBITE TESTING, INC.</b></p> | <b>DRILL STEM TEST REPORT</b>  |   |
|  | Clipper Energy LLC<br>3838 Oak Lawn #1310<br>Dallas Texas 75219<br>ATTN: Bill Robinson | Deyoung #2<br>33-9s-21w Graham<br>Job Ticket: 32893      DST#: 1<br>Test Start: 2008.07.06 @ 07:37:59 |

**GENERAL INFORMATION:**

|   |                                       |
|---|---------------------------------------|
| Formation: <b>LKC "C"</b>                                 | Test Type: Conventional Bottom Hole   |
| Deviated: No Whipstock: ft (KB)                           | Tester: Ray Schwager                  |
| Time Tool Opened: 09:28:54                                | Unit No: 42                           |
| Time Test Ended: 13:04:23                                 | Reference Elevations: 2335.00 ft (KB) |
| Interval: <b>3590.00 ft (KB) To 3620.00 ft (KB) (TVD)</b> | 2328.00 ft (CF)                       |
| Total Depth: 3620.00 ft (KB) (TVD)                        | KB to GR/CF: 7.00 ft                  |
| Hole Diameter: 7.85 inches                                | Hole Condition: Fair                  |

|  |                        |                                     |
|--|------------------------|-------------------------------------|
| <b>Serial #: 8365</b>                        | <b>Inside</b>          | Capacity: 7000.00 psig              |
| Press@RunDepth: 24.39 psig @ 3596.01 ft (KB) | Start Date: 2008.07.06 | Last Calib.: 2008.07.06             |
| Start Time: 07:37:59                         | End Date: 2008.07.06   | Time On Btm: 2008.07.06 @ 09:25:24  |
|  | End Time: 13:04:23     | Time Off Btm: 2008.07.06 @ 11:31:24 |

**TEST COMMENT:** IFF-w k bl thru-out 1"to 1/8"bl  
 FFP-no bl  
 Times 30-30-30-30



| PRESSURE SUMMARY |                 |              |                      |
|------------------|-----------------|--------------|----------------------|
| Time (Min.)      | Pressure (psig) | Temp (deg F) | Annotation           |
| 0                | 1722.67         | 104.73       | Initial Hydro-static |
| 4                | 22.60           | 104.58       | Open To Flow (1)     |
| 34               | 21.55           | 103.89       | Shut-In(1)           |
| 65               | 516.04          | 104.33       | End Shut-In(1)       |
| 66               | 21.96           | 103.98       | Open To Flow (2)     |
| 96               | 24.39           | 104.61       | Shut-In(2)           |
| 123              | 286.50          | 105.13       | End Shut-In(2)       |
| 126              | 1678.14         | 106.28       | Final Hydro-static   |

| Recovery    |             |              |
|-------------|-------------|--------------|
| Length (ft) | Description | Volume (bbl) |
| 20.00       | mud         | 0.28         |
|             |             |              |
|             |             |              |
|             |             |              |
|             |             |              |

CONFIDENTIAL  
AUG 25 2008  
KCC

| Gas Rates |                |                 |                   |
|-----------|----------------|-----------------|-------------------|
|           | Choke (inches) | Pressure (psig) | Gas Rate (MMcf/d) |
|           |                |                 |                   |



**TRILOBITE  
TESTING, INC.**

# DRILL STEM TEST REPORT

## FLUID SUMMARY

Clipper Energy LLC  
3838 Oak Lawn #1310  
Dallas Texas 75219  
ATTN: Bill Robinson

**Deyoung #2**  
**33-~~8~~-21w Graham**  
Job Ticket: 32893      **DST#: 1**  
Test Start: 2008.07.06 @ 07:37:59

### Mud and Cushion Information

|                                  |                            |                 |         |
|----------------------------------|----------------------------|-----------------|---------|
| Mud Type: Gel Chem               | Cushion Type:              | Oil API:        | deg API |
| Mud Weight: 9.00 lb/gal          | Cushion Length: ft         | Water Salinity: | ppm     |
| Viscosity: 57.00 sec/qt          | Cushion Volume: bbl        |                 |         |
| Water Loss: 7.80 in <sup>3</sup> | Gas Cushion Type:          |                 |         |
| Resistivity: ohm.m               | Gas Cushion Pressure: psig |                 |         |
| Salinity: 2600.00 ppm            |                            |                 |         |
| Filter Cake: 2.00 inches         |                            |                 |         |

### Recovery Information

Recovery Table

| Length<br>ft | Description | Volume<br>bbl |
|--------------|-------------|---------------|
| 20.00        | mud         | 0.281         |

Total Length: 20.00 ft      Total Volume: 0.281 bbl  
 Num Fluid Samples: 0      Num Gas Bombs: 0      Serial #:  
 Laboratory Name:      Laboratory Location:  
 Recovery Comments:

CONFIDENTIAL  
AUG 25 2008  
KCC

**SEP 08 2008**

CONSERVATION DIVISION  
WICHITA, KS

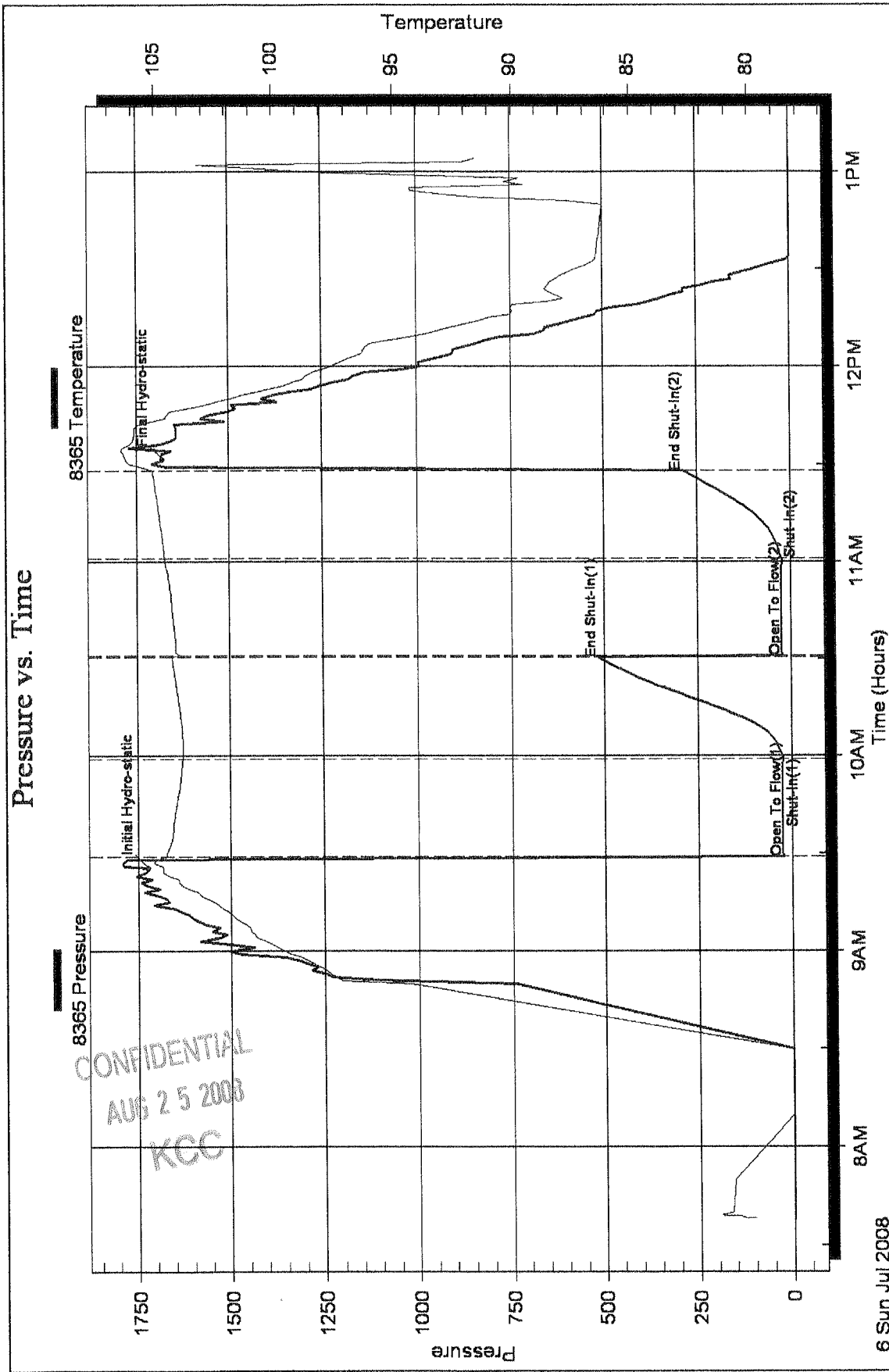
DST Test Number: 1

33-8s-21w Graham

Clipper Energy LLC

Serial #: 8365

### Pressure vs. Time



RECEIVED  
KANSAS CORPORATION COMMISS

SEP 08 2008  
CONSERVATION DIVISION  
WICHITA, KS