

## DRILL STEM TEST REPORT

Prepared For: **Blake Exploration**

Box 150  
Bogue KS 67625

ATTN: Mike Davignon

**7 9 21 Graham KS**

**Thompson # 1**

Start Date: 2007.02.06 @ 01:14:13

End Date: 2007.02.06 @ 06:56:28

Job Ticket #: 27557                      DST #: 1

Trilobite Testing, Inc

PO Box 362 Hays, KS 67601

ph: 785-625-4778 fax: 785-625-5620



**TRILOBITE TESTING, INC**

# DRILL STEM TEST REPORT

Blake Exploration

**Thompson # 1**

Box 150  
Bogue KS 67625

**7 9 21 Graham KS**

Job Ticket: 27557

**DST#: 1**

ATTN: Mike Davignon

Test Start: 2007.02.06 @ 01:14:13

## GENERAL INFORMATION:

Formation: I-J-K LKC  
Deviated: No Whipstock: ft (KB)  
Time Tool Opened: 03:13:03  
Time Test Ended: 06:56:28

Test Type: Conventional Bottom Hole  
Tester: Dan Bangle  
Unit No: 38

Interval: **3615.00 ft (KB) To 3670.00 ft (KB) (TVD)**  
Total Depth: 3670.00 ft (KB) (TVD)  
Hole Diameter: 7.88 inches Hole Condition: Good

Reference Elevations: 2266.00 ft (KB)  
2261.00 ft (CF)  
KB to GR/CF: 5.00 ft

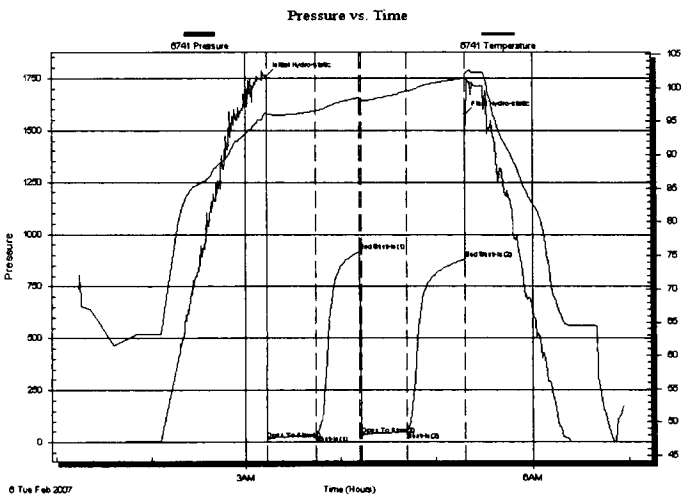
## Serial #: 6741

Inside

Press@RunDepth: 48.17 psig @ 3618.00 ft (KB)  
Start Date: 2007.02.06 End Date: 2007.02.06  
Start Time: 01:14:15 End Time: 06:56:28

Capacity: 7000.00 psig  
Last Calib.: 2007.02.06  
Time On Btrn: 2007.02.06 @ 03:12:53  
Time Off Btrn: 2007.02.06 @ 05:18:28

TEST COMMENT: IF Weak building to 1 1/2 "  
FF Weak building to 1 1/2 "



## PRESSURE SUMMARY

Time (Min.)	Pressure (psig)	Temp (deg F)	Annotation
0	1757.89	96.31	Initial Hydro-static
1	11.67	95.70	Open To Flow (1)
32	33.07	96.58	Shut-In(1)
59	917.68	98.53	End Shut-In(1)
60	31.62	98.16	Open To Flow (2)
89	48.17	99.49	Shut-In(2)
126	880.52	101.41	End Shut-In(2)
126	1574.18	101.82	Final Hydro-static

## Recovery

Length (ft)	Description	Volume (bbl)
90.00	MCGsyO 10%G 60%O 30%M	0.99
0.00	60 GIP	0.00

## Gas Rates

Choke (inches)	Pressure (psig)	Gas Rate (Mcf/d)



**TRILOBITE  
TESTING, INC**

## DRILL STEM TEST REPORT

**TOOL DIAGRAM**

Blake Exploration

**Thompson # 1**

Box 150  
Bogue KS 67625

**7 9 21 Graham KS**

Job Ticket: 27557

**DST#: 1**

ATTN: Mike Davignon

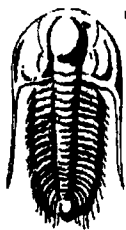
Test Start: 2007.02.06 @ 01:14:13

### Tool Information

Drill Pipe:	Length: 3573.00 ft	Diameter: 3.80 inches	Volume: 50.12 bbl	Tool Weight: 2000.00 lb
Heavy Wt. Pipe:	Length: 0.00 ft	Diameter: 0.00 inches	Volume: 0.00 bbl	Weight set on Packer: 20000.00 lb
Drill Collar:	Length: 30.00 ft	Diameter: 2.25 inches	Volume: 0.15 bbl	Weight to Pull Loose: 60000.00 lb
			<u>Total Volume: 50.27 bbl</u>	Tool Chased 0.00 ft
Drill Pipe Above KB:	9.00 ft			String Weight: Initial 49000.00 lb
Depth to Top Packer:	3615.00 ft			Final 49000.00 lb
Depth to Bottom Packer:	ft			
Interval between Packers:	55.00 ft			
Tool Length:	76.00 ft			
Number of Packers:	2	Diameter: 6.75 inches		

Tool Comments:

Tool Description	Length (ft)	Serial No.	Position	Depth (ft)	Accum. Lengths
Change Over Sub	1.00			3595.00	
Shut In Tool	5.00			3600.00	
Hydraulic tool	5.00			3605.00	
Packer	5.00			3610.00	21.00 Bottom Of Top Packer
Packer	5.00			3615.00	
Stubb	1.00			3616.00	
Perforations	1.00			3617.00	
Change Over Sub	1.00			3618.00	
Recorder	0.00	6741	Inside	3618.00	
Drill Pipe	31.00			3649.00	
Change Over Sub	1.00			3650.00	
Recorder	0.00	13254	Outside	3650.00	
Perforations	17.00			3667.00	
Bullnose	3.00			3670.00	55.00 Bottom Packers & Anchor
<b>Total Tool Length:</b>	<b>76.00</b>				



**TRILOBITE  
TESTING, INC**

# DRILL STEM TEST REPORT

**FLUID SUMMARY**

Blake Exploration

**Thompson # 1**

Box 150  
Bogue KS 67625

**7 9 21 Graham KS**

Job Ticket: 27557

**DST#: 1**

ATTN: Mke Davignon

Test Start: 2007.02.06 @ 01:14:13

## Mud and Cushion Information

Mud Type: Gel Chem	Cushion Type:	Oil API:	deg API
Mud Weight: 9.00 lb/gal	Cushion Length: ft	Water Salinity:	ppm
Viscosity: 57.00 sec/qt	Cushion Volume: bbl		
Water Loss: 6.39 in <sup>3</sup>	Gas Cushion Type:		
Resistivity: ohm.m	Gas Cushion Pressure: psig		
Salinity: 2600.00 ppm			
Filter Cake: inches			

## Recovery Information

Recovery Table

Length ft	Description	Volume bbl
90.00	MCGsyO 10%G 60%O 30%M	0.989
0.00	60 GIP	0.000

Total Length: 90.00 ft      Total Volume: 0.989 bbl

Num Fluid Samples: 0      Num Gas Bombs: 0      Serial #:

Laboratory Name:      Laboratory Location:

Recovery Comments:

Serial #: 6741

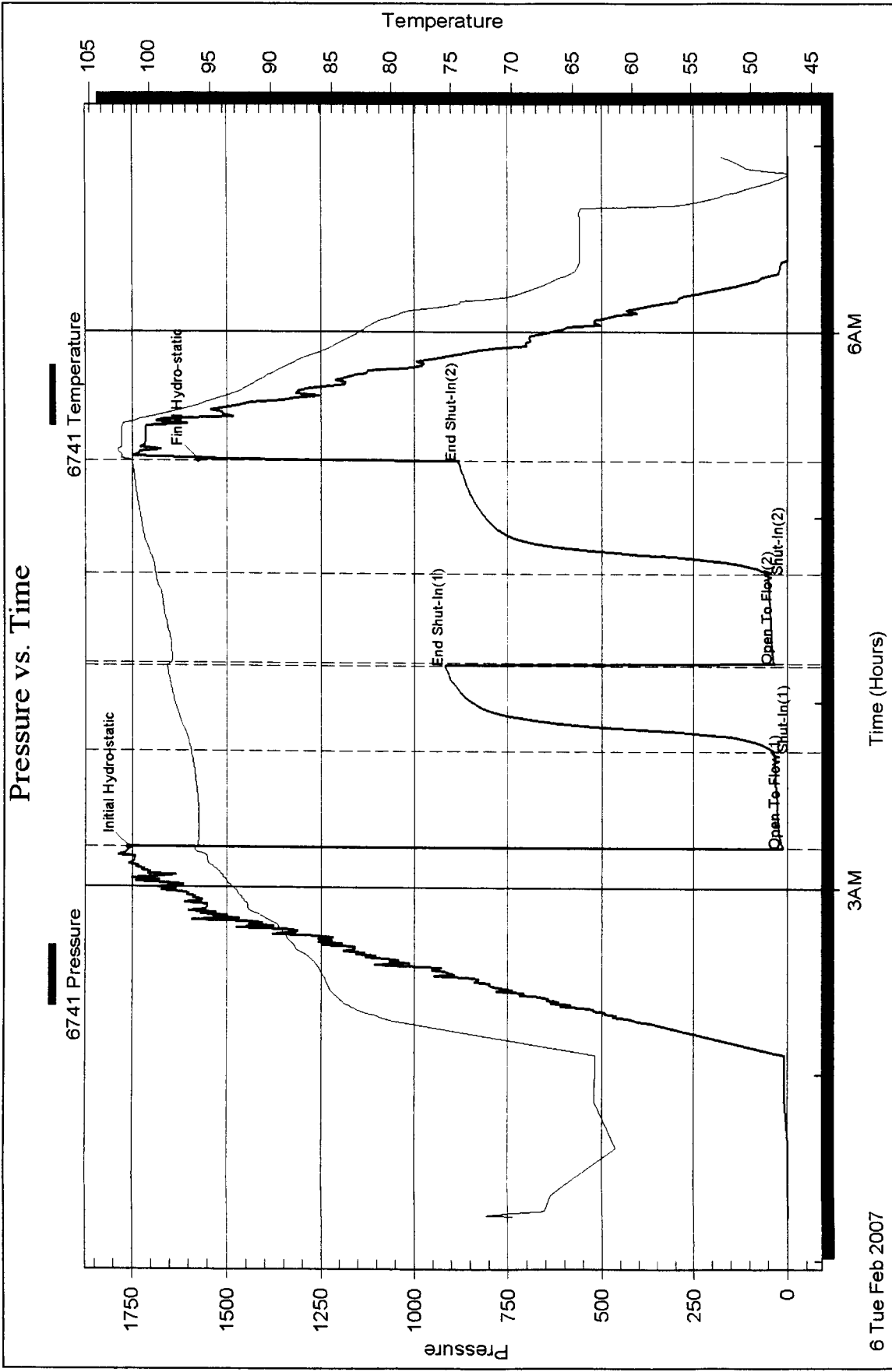
Inside

Blake Exploration

7 9 21 Graham KS

DST Test Number: 1

### Pressure vs. Time

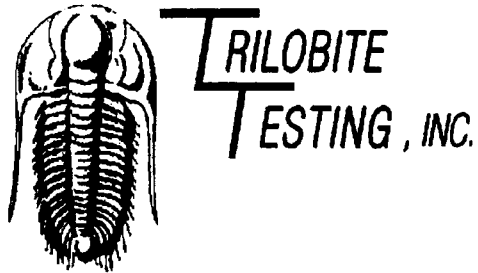


6 Tue Feb 2007

3AM

Time (Hours)

6AM



## DRILL STEM TEST REPORT

Prepared For: **Blake Exploration**

Box 150  
Bogue KS 67625

ATTN: Mike Davignon

**7 9 21 Graham KS**

**Thompson # 1**

Start Date: 2007.02.06 @ 22:12:03

End Date: 2007.02.07 @ 02:25:33

Job Ticket #: 27558                      DST #: 2

Trilobite Testing, Inc

PO Box 362 Hays, KS 67601

ph: 785-625-4778 fax: 785-625-5620

Blake Exploration

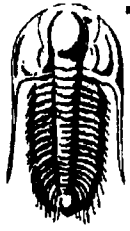
Thompson # 1

7 9 21 Graham KS

DST # 2

Arbuckle

2007.02.06



**TRILOBITE  
TESTING, INC**

# DRILL STEM TEST REPORT

Blake Exploration

**Thompson # 1**

Box 150  
Bogue KS 67625

**7 9 21 Graham KS**

Job Ticket: 27558

**DST#: 2**

ATTN: Mike Davignon

Test Start: 2007.02.06 @ 22:12:03

## GENERAL INFORMATION:

Formation: **Arbuckle**

Deviated: No Whipstock: ft (KB)

Time Tool Opened: 23:59:43

Time Test Ended: 02:25:33

Test Type: Conventional Bottom Hole

Tester: Dan Bangle

Unit No: 38

Interval: **3760.00 ft (KB) To 3814.00 ft (KB) (TVD)**

Reference Elevations: 2266.00 ft (KB)

Total Depth: 3814.00 ft (KB) (TVD)

2261.00 ft (CF)

Hole Diameter: 7.88 inches Hole Condition: Good

KB to GR/CF: 5.00 ft

**Serial #: 6741** Inside

Press@RunDepth: 14.82 psig @ 3763.00 ft (KB)

Capacity: 7000.00 psig

Start Date: 2007.02.06

End Date:

2007.02.07

Last Calib.: 2007.02.07

Start Time: 22:12:05

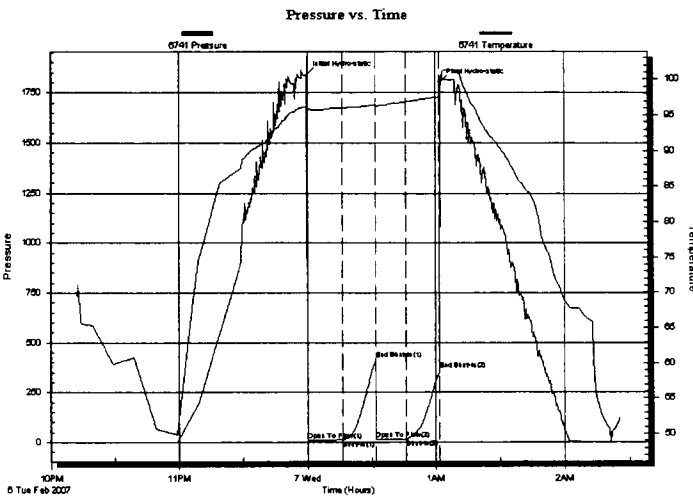
End Time:

02:25:33

Time On Btm: 2007.02.06 @ 23:59:33

Time Off Btm: 2007.02.07 @ 01:02:03

TEST COMMENT: IF Weak died in 14 min  
FF No blow



## PRESSURE SUMMARY

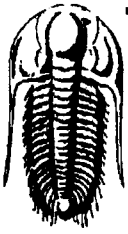
Time (Min.)	Pressure (psig)	Temp (deg F)	Annotation
0	1837.66	96.20	Initial Hydro-static
1	11.24	95.74	Open To Flow (1)
17	12.68	96.03	Shut-In (1)
32	414.46	96.41	End Shut-In (1)
33	13.21	96.31	Open To Flow (2)
47	14.82	96.86	Shut-In (2)
63	361.37	97.57	End Shut-In (2)
63	1801.40	98.46	Final Hydro-static

## Recovery

Length (ft)	Description	Volume (bbl)
5.00	Mud w/Oil spots	0.02

## Gas Rates

Choke (inches)	Pressure (psig)	Gas Rate (Mcf/d)



**TRILOBITE  
TESTING, INC**

**DRILL STEM TEST REPORT**

**TOOL DIAGRAM**

Blake Exploration

**Thompson # 1**

Box 150  
Bogue KS 67625

**7 9 21 Graham KS**

Job Ticket: 27558

**DST#: 2**

ATTN: Mike Davignon

Test Start: 2007.02.06 @ 22:12:03

**Tool Information**

Drill Pipe:	Length: 3729.00 ft	Diameter: 3.80 inches	Volume: 52.31 bbl	Tool Weight:	2000.00 lb
Heavy Wt. Pipe:	Length: 0.00 ft	Diameter: 0.00 inches	Volume: 0.00 bbl	Weight set on Packer:	20000.00 lb
Drill Collar:	Length: 30.00 ft	Diameter: 2.25 inches	Volume: 0.15 bbl	Weight to Pull Loose:	60000.00 lb
		Total Volume: 52.46 bbl		Tool Chased	0.00 ft
Drill Pipe Above KB:	20.00 ft			String Weight: Initial	52000.00 lb
Depth to Top Packer:	3760.00 ft			Final	52000.00 lb
Depth to Bottom Packer:	ft				
Interval between Packers:	54.00 ft				
Tool Length:	75.00 ft				
Number of Packers:	2	Diameter:	6.75 inches		

Tool Comments:

Tool Description	Length (ft)	Serial No.	Position	Depth (ft)	Accum. Lengths
Change Over Sub	1.00			3740.00	
Shut In Tool	5.00			3745.00	
Hydraulic tool	5.00			3750.00	
Packer	5.00			3755.00	21.00 Bottom Of Top Packer
Packer	5.00			3760.00	
Stubb	1.00			3761.00	
Perforations	1.00			3762.00	
Change Over Sub	1.00			3763.00	
Recorder	0.00	6741	Inside	3763.00	
Drill Pipe	31.00			3794.00	
Change Over Sub	1.00			3795.00	
Recorder	0.00	13254	Outside	3795.00	
Perforations	16.00			3811.00	
Bullnose	3.00			3814.00	54.00 Bottom Packers & Anchor

**Total Tool Length: 75.00**



**TRILOBITE  
TESTING, INC**

## DRILL STEM TEST REPORT

**FLUID SUMMARY**

Blake Exploration

**Thompson # 1**

Box 150  
Bogue KS 67625

**7 9 21 Graham KS**

Job Ticket: 27558

**DST#: 2**

ATTN: Mike Davignon

Test Start: 2007.02.06 @ 22:12:03

### Mud and Cushion Information

Mud Type: Gel Chem	Cushion Type:	Oil API:	deg API
Mud Weight: 9.00 lb/gal	Cushion Length: ft	Water Salinity:	ppm
Viscosity: 53.00 sec/qt	Cushion Volume: bbl		
Water Loss: 6.79 in <sup>3</sup>	Gas Cushion Type:		
Resistivity: ohm.m	Gas Cushion Pressure: psig		
Salinity: 2600.00 ppm			
Filter Cake: inches			

### Recovery Information

Recovery Table

Length ft	Description	Volume bbl
5.00	Mud w/Oil spots	0.025

Total Length: 5.00 ft      Total Volume: 0.025 bbl

Num Fluid Samples: 0

Num Gas Bombs: 0

Serial #:

Laboratory Name:

Laboratory Location:

Recovery Comments:

Serial #: 6741

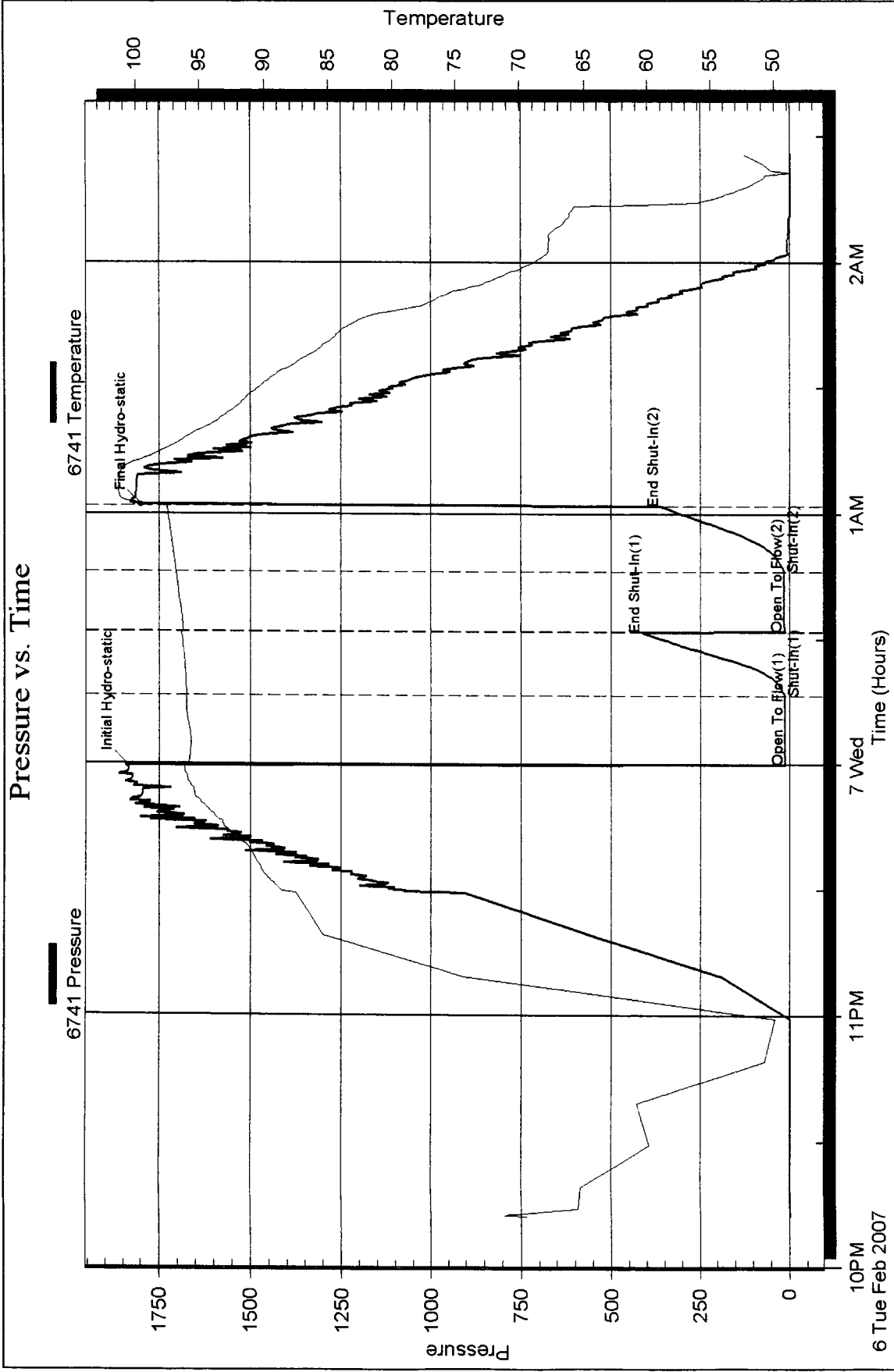
Inside

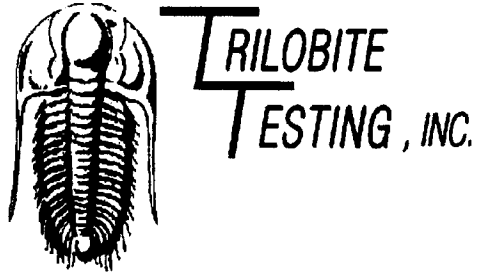
Blake Exploration

7 9 21 Graham KS

DST Test Number: 2

### Pressure vs. Time





## DRILL STEM TEST REPORT

Prepared For: **Blake Exploration**

Box 150  
Bogue KS 67625

ATTN: Mike Davignon

**7 9 21 Graham KS**

**Thompson # 1**

Start Date: 2007.02.07 @ 08:48:28

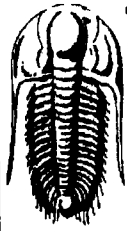
End Date: 2007.02.07 @ 13:37:28

Job Ticket #: 27559                      DST #: 3

Trilobite Testing, Inc

PO Box 362 Hays, KS 67601

ph: 785-625-4778 fax: 785-625-5620



**TRILOBITE  
TESTING, INC**

# DRILL STEM TEST REPORT

Blake Exploration  
Box 150  
Bogue KS 67625  
ATTN: Mike Davignon

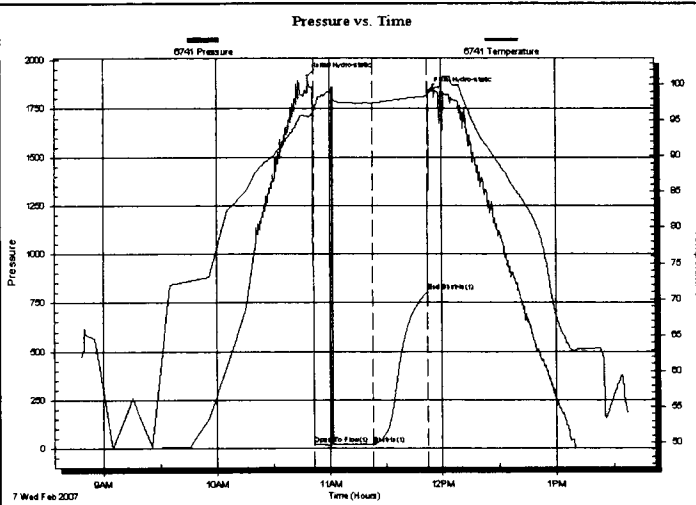
**Thompson # 1**  
**7 9 21 Graham KS**  
Job Ticket: 27559      **DST#: 3**  
Test Start: 2007.02.07 @ 08:48:28

## GENERAL INFORMATION:

Formation: **Arbuckle**  
Deviated: **No** Whipstock:                      ft (KB)  
Time Tool Opened: 10:51:08  
Time Test Ended: 13:37:28  
Interval: **3800.00 ft (KB) To 3820.00 ft (KB) (TVD)**  
Total Depth: **3820.00 ft (KB) (TVD)**  
Hole Diameter: **7.88 inches** Hole Condition: **Good**  
Test Type: **Conventional Bottom Hole**  
Tester: **Dan Bangle**  
Unit No: **38**  
Reference Elevations: **2266.00 ft (KB)**  
**2261.00 ft (CF)**  
KB to GR/CF: **5.00 ft**

**Serial #: 6741**      **Inside**  
Press@RunDepth: **19.99 psig @ 3801.00 ft (KB)**      Capacity: **7000.00 psig**  
Start Date: **2007.02.07**      End Date: **2007.02.07**      Last Calib.: **2007.02.07**  
Start Time: **08:48:30**      End Time: **13:37:28**      Time On Btm: **2007.02.07 @ 10:48:28**  
Time Off Btm: **2007.02.07 @ 11:53:13**

TEST COMMENT: IF Slid tool 6' to bottom Weak 3/4" blow flushed tool Died in 20 min after flush



## PRESSURE SUMMARY

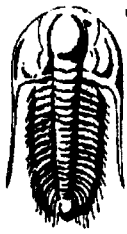
Time (Min.)	Pressure (psig)	Temp (deg F)	Annotation
0	1917.35	95.57	Initial Hydro-static
3	18.97	95.79	Open To Flow(1)
35	19.99	97.38	Shut-In(1)
65	808.55	98.38	End Shut-In(1)
65	1840.46	98.67	Final Hydro-static

## Recovery

Length (ft)	Description	Volume (bbl)
10.00	Mud w/ Oil spots	0.05

## Gas Rates

	Choke (inches)	Pressure (psig)	Gas Rate (Mcf/d)



**TRILOBITE**  
TESTING, INC

## DRILL STEM TEST REPORT

**TOOL DIAGRAM**

Blake Exploration

**Thompson # 1**

Box 150  
Bogue KS 67625

**7 9 21 Graham KS**

Job Ticket: 27559

**DST#: 3**

ATTN: Mike Davignon

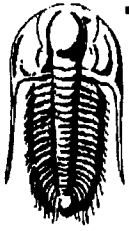
Test Start: 2007.02.07 @ 08:48:28

### Tool Information

Drill Pipe:	Length: 3760.00 ft	Diameter: 3.80 inches	Volume: 52.74 bbl	Tool Weight: 2000.00 lb
Heavy Wt. Pipe:	Length: 0.00 ft	Diameter: 0.00 inches	Volume: 0.00 bbl	Weight set on Packer: 20000.00 lb
Drill Collar:	Length: 30.00 ft	Diameter: 2.25 inches	Volume: 0.15 bbl	Weight to Pull Loose: 80000.00 lb
			<u>Total Volume: 52.89 bbl</u>	Tool Chased 0.00 ft
Drill Pipe Above KB:	11.00 ft			String Weight: Initial 52000.00 lb
Depth to Top Packer:	3800.00 ft			Final 52000.00 lb
Depth to Bottom Packer:	ft			
Interval between Packers:	20.00 ft			
Tool Length:	41.00 ft			
Number of Packers:	2	Diameter: 6.75 inches		

Tool Comments:

Tool Description	Length (ft)	Serial No.	Position	Depth (ft)	Accum. Lengths
Change Over Sub	1.00			3780.00	
Shut In Tool	5.00			3785.00	
Hydraulic tool	5.00			3790.00	
Packer	5.00			3795.00	21.00 Bottom Of Top Packer
Packer	5.00			3800.00	
Stubb	1.00			3801.00	
Recorder	0.00	6741	Inside	3801.00	
Perforations	16.00			3817.00	
Recorder	0.00	13254	Outside	3817.00	
Bullnose	3.00			3820.00	20.00 Bottom Packers & Anchor
<b>Total Tool Length:</b>	<b>41.00</b>				



**TRILOBITE  
TESTING, INC**

**DRILL STEM TEST REPORT**

**FLUID SUMMARY**

Blake Exploration

**Thompson # 1**

Box 150  
Bogue KS 67625

**7 9 21 Graham KS**

Job Ticket: 27559

**DST#: 3**

ATTN: Mike Davignon

Test Start: 2007.02.07 @ 08:48:28

**Mud and Cushion Information**

Mud Type: Gel Chem	Cushion Type:	Oil API:	deg API
Mud Weight: 9.00 lb/gal	Cushion Length: ft	Water Salinity:	ppm
Viscosity: 50.00 sec/qt	Cushion Volume: bbl		
Water Loss: 6.80 in <sup>3</sup>	Gas Cushion Type:		
Resistivity: ohm.m	Gas Cushion Pressure: psig		
Salinity: 2600.00 ppm			
Filter Cake: inches			

**Recovery Information**

Recovery Table

Length ft	Description	Volume bbl
10.00	Mud w / Oil spots	0.049

Total Length: 10.00 ft      Total Volume: 0.049 bbl

Num Fluid Samples: 0      Num Gas Bombs: 0      Serial #:

Laboratory Name:      Laboratory Location:

Recovery Comments:

Serial #: 6741

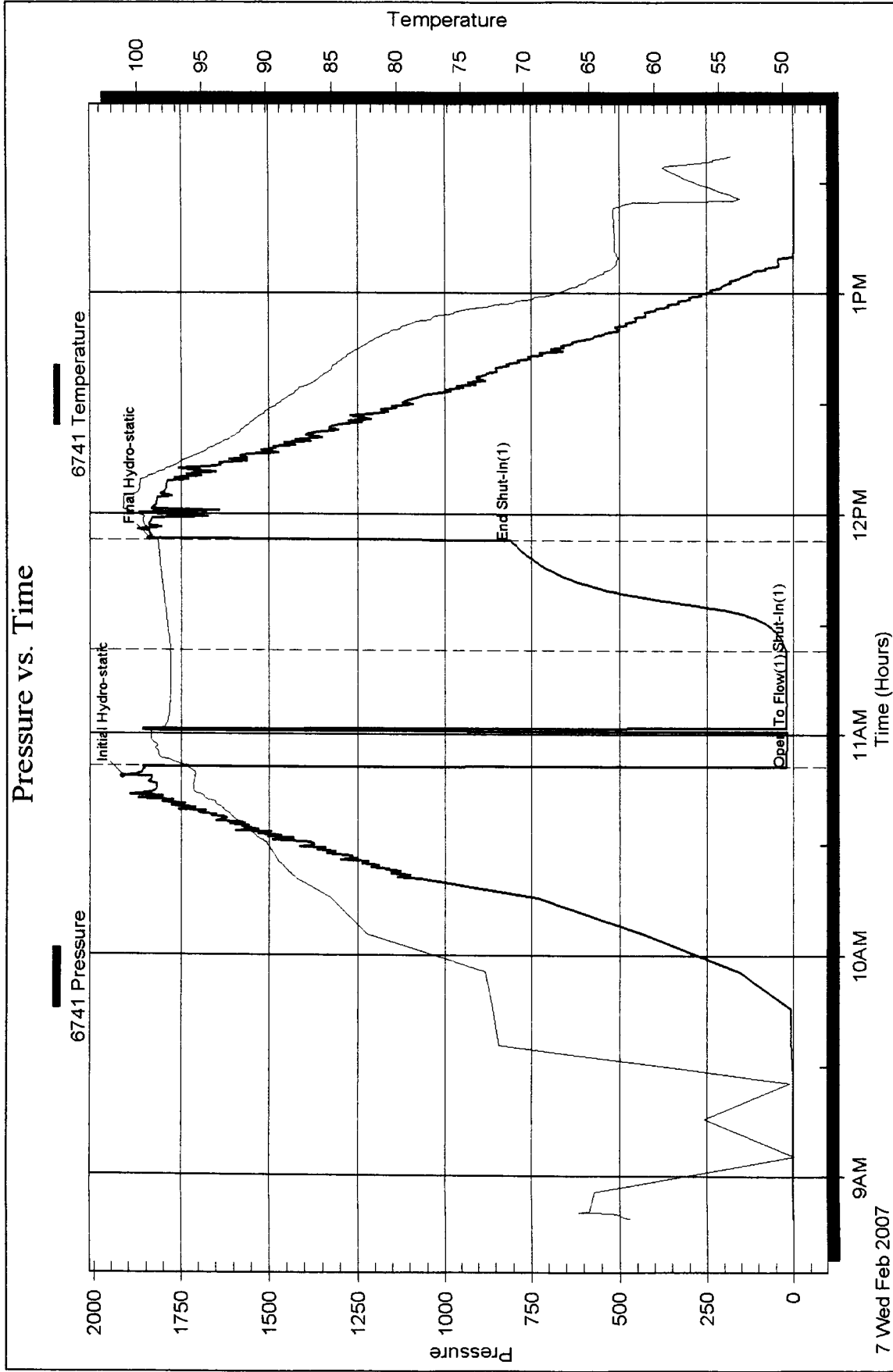
Inside

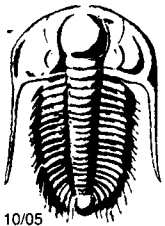
Blake Exploration

7 9 21 Graham KS

DST Test Number: 3

### Pressure vs. Time





# TRILOBITE TESTING INC.

P.O. Box 362 • Hays, Kansas 67601

27557

9819 ✓

## Test Ticket

Well Name & No. Thompson #1 Test No. 1 Date 2-6-07  
 Company Blake Exploration Zone Tested A-I-K-LKC  
 Address Box 150 Bogue, Ks. 67625 Elevation 2266 KB 2261 GL  
 Co. Rep / Geo. Mike Davignon Rig Murfin #16  
 Location: Sec. 7 Twp. 9 Rge. 21 Co. Graham State Ks  
 Comment: \_\_\_\_\_ Release date / time: \_\_\_\_\_

Interval Tested 3615 ——— 3670 Initial Str Wt./Lbs. 49,000 Unseated Str Wt./Lbs. 49,200  
 Anchor Length 55 Wt. Set Lbs. 20,200 Wt. Pulled Loose/Lbs. 60,000  
 Top Packer Depth 3610 Tool Weight 2,200  
 Bottom Packer Depth 3615 Hole Size 7 7/8" Rubber Size 6 3/4"  
 Total Depth 3670 Wt. Pipe Run \_\_\_\_\_ Drill Collar Run 30  
 Mud Wt. 9 LCM \_\_\_\_\_ Vis. 57 WL 6.4 Drill Pipe Size 4.5 XH Ft. Run 3573  
 Blow Description E.F. Weak building to 1 1/2"

E.F. Weak - building to 1 1/2"

Recovery - Total Feet 90 GIP 60 Ft. in DC 30 Ft. in DP 60  
 Rec. 90 Feet of MC GSYC 10 %gas 60 %oil %water 30 %mud  
 Rec. \_\_\_\_\_ Feet of \_\_\_\_\_ %gas %oil %water %mud  
 Rec. \_\_\_\_\_ Feet of \_\_\_\_\_ %gas %oil %water %mud  
 Rec. \_\_\_\_\_ Feet of \_\_\_\_\_ %gas %oil %water %mud  
 Rec. \_\_\_\_\_ Feet of \_\_\_\_\_ %gas %oil %water %mud  
 BHT 101 °F Gravity \_\_\_\_\_ °API D @ \_\_\_\_\_ °F Corrected Gravity \_\_\_\_\_ °API  
 RW \_\_\_\_\_ @ \_\_\_\_\_ °F Chlorides \_\_\_\_\_ ppm Recovery \_\_\_\_\_ Chlorides 2600 ppm System

	AK-1	Alpine	PSI	Recorder No.	Test
(A) Initial Hydrostatic Mud		1812		6741	1100
(B) First Initial Flow Pressure		11		(depth) 3618	Jars
(C) First Final Flow Pressure		.33		Recorder No. 13254	Safety Jt.
(D) Initial Shut-In Pressure		917		(depth) 3650	Circ Sub
(E) Second Initial Flow Pressure		.31		Recorder No.	Sampler
(F) Second Final Flow Pressure		48		(depth)	Straddle
(G) Final Shut-In Pressure		880		Initial Opening	Ext. Packer
(Q) Final Hydrostatic Mud		1748		Initial Shut-In	Shale Packer
				Final Flow	Ruined Packer
				Final Shut-In	Mileage <u>101 RT 126.2</u>

TRILOBITE TESTING INC. SHALL NOT BE LIABLE FOR DAMAGED OF ANY KIND OF THE PROPERTY OR PERSONNEL OF THE ONE FOR WHOM A TEST IS MADE, OR FOR ANY LOSS SUFFERED OR SUSTAINED, DIRECTLY OR INDIRECTLY, THROUGH THE USE OF ITS EQUIPMENT, OR ITS STATEMENTS OR OPINION CONCERNING THE RESULTS OF ANY TEST. TOOLS LOST OR DAMAGED IN THE HOLE SHALL BE PAID FOR AT COST BY THE PARTY FOR WHOM THE TEST IS MADE.

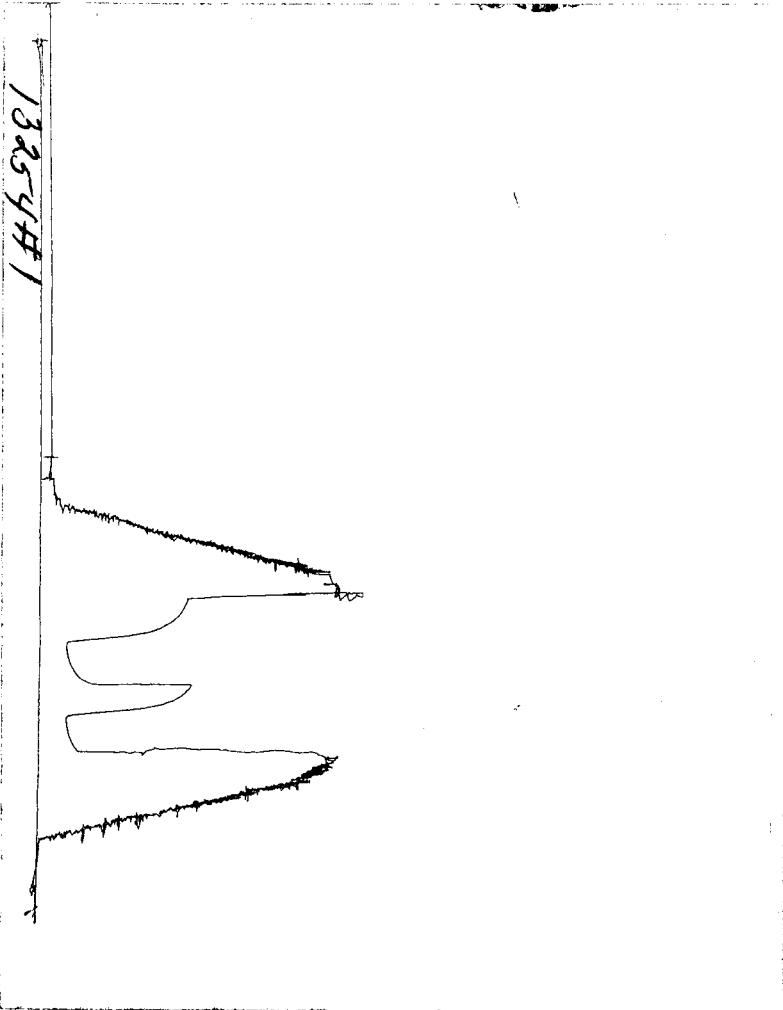
Approved By \_\_\_\_\_  
 Our Representative Dan Bangle

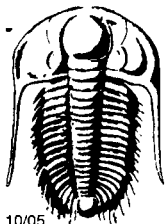
T-On Location	T-Started	T-Open	T-Pulled	T-Out
<u>00:30</u>	<u>01:14</u>	<u>03:12</u>	<u>05:12</u>	<u>06:56</u>

Sub Total: 1226.25  
 Std. By \_\_\_\_\_  
 Acc. Chg: \_\_\_\_\_  
 Other: \_\_\_\_\_  
 Total: \_\_\_\_\_

**CHART PAGE**

This is a photocopy of the actual AK-1 recorder chart.





# TRILOBITE TESTING INC.

27558

P.O. Box 362 • Hays, Kansas 67601

## Test Ticket

Well Name & No. Thompson #1 Test No. 2 Date 2-6-07  
 Company Blake Exploration Zone Tested Arbuckle  
 Address \_\_\_\_\_ Elevation 2266 KB 2261 GL \_\_\_\_\_  
 Co. Rep / Geo. Mike Davignon Rig Merfin #16  
 Location: Sec. 7 Twp. 9 Rge. 21 Co. Graham State Ks  
 Comment: \_\_\_\_\_ Release date / time: \_\_\_\_\_

Interval Tested 3760 ————— 3814 Initial Str Wt./Lbs. 52000 Unseated Str Wt/Lbs. 52000  
 Anchor Length 54 Wt. Set Lbs. 20000 Wt. Pulled Loose/Lbs. 6000  
 Top Packer Depth 3755 Tool Weight 2000  
 Bottom Packer Depth 3760 Hole Size 7 7/8" Rubber Size 6 3/4"  
 Total Depth 3814 Wt. Pipe Run \_\_\_\_\_ Drill Collar Run 30  
 Mud Wt. 8.9 LCM \_\_\_\_\_ Vis. 5.3 WL 6.8 Drill Pipe Size 4.5XH Ft. Run 3729  
 Blow Description I.F. Weak - Died in 14 min.

F.F. No blow

Recovery - Total Feet 5 GIP \_\_\_\_\_ Ft. in DC 5 Ft. in DP \_\_\_\_\_  
 Rec. 5 Feet of Mud w/oil spots %gas \_\_\_\_\_ %oil \_\_\_\_\_ %water \_\_\_\_\_ %mud \_\_\_\_\_  
 Rec. \_\_\_\_\_ Feet of \_\_\_\_\_ %gas \_\_\_\_\_ %oil \_\_\_\_\_ %water \_\_\_\_\_ %mud \_\_\_\_\_  
 Rec. \_\_\_\_\_ Feet of \_\_\_\_\_ %gas \_\_\_\_\_ %oil \_\_\_\_\_ %water \_\_\_\_\_ %mud \_\_\_\_\_  
 Rec. \_\_\_\_\_ Feet of \_\_\_\_\_ %gas \_\_\_\_\_ %oil \_\_\_\_\_ %water \_\_\_\_\_ %mud \_\_\_\_\_  
 Rec. \_\_\_\_\_ Feet of \_\_\_\_\_ %gas \_\_\_\_\_ %oil \_\_\_\_\_ %water \_\_\_\_\_ %mud \_\_\_\_\_  
 BHT 97 °F Gravity \_\_\_\_\_ °API D @ \_\_\_\_\_ °F Corrected Gravity \_\_\_\_\_ °API  
 RW \_\_\_\_\_ @ \_\_\_\_\_ °F Chlorides \_\_\_\_\_ ppm Recovery \_\_\_\_\_ Chlorides 2600 ppm System

	AK-1	Alpine	Recorder No.	Test
(A) Initial Hydrostatic Mud	<u>1863</u>	PSI	<u>6741</u>	<u>1100</u>
(B) First Initial Flow Pressure	<u>11</u>	PSI	(depth) <u>3763</u>	Jars _____
(C) First Final Flow Pressure	<u>12</u>	PSI	Recorder No. <u>13254</u>	Safety Jt. _____
(D) Initial Shut-In Pressure	<u>414</u>	PSI	(depth) <u>3795</u>	Circ Sub _____
(E) Second Initial Flow Pressure	<u>13</u>	PSI	Recorder No. _____	Sampler _____
(F) Second Final Flow Pressure	<u>14</u>	PSI	(depth) _____	Straddle _____
(G) Final Shut-In Pressure	<u>361</u>	PSI	<b>Initial Opening</b> <u>15</u>	Ext. Packer _____
(Q) Final Hydrostatic Mud	<u>1813</u>	PSI	Initial Shut-In <u>15</u>	Shale Packer _____

TRILOBITE TESTING INC. SHALL NOT BE LIABLE FOR DAMAGED OF ANY KIND OF THE PROPERTY OR PERSONNEL OF THE ONE FOR WHOM A TEST IS MADE, OR FOR ANY LOSS SUFFERED OR SUSTAINED, DIRECTLY OR INDIRECTLY, THROUGH THE USE OF ITS EQUIPMENT, OR ITS STATEMENTS OR OPINION CONCERNING THE RESULTS OF ANY TEST. TOOLS LOST OR DAMAGED IN THE HOLE SHALL BE PAID FOR AT COST BY THE PARTY FOR WHOM THE TEST IS MADE.

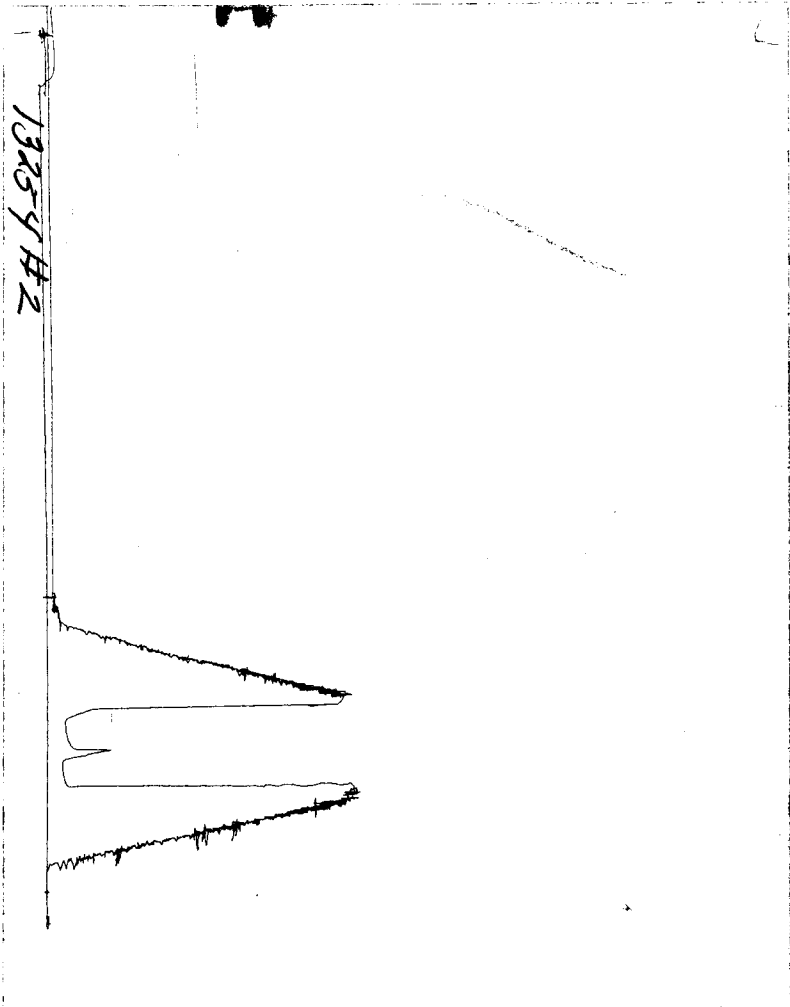
Approved By \_\_\_\_\_

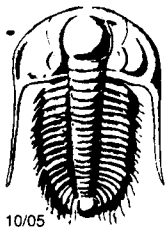
Our Representative Dan Bangle

Final Flow 15 Ruined Packer \_\_\_\_\_  
 Final Shut-In 15 Mileage 101 RT 126.2  
**T-On Location** 22:00 Sub Total: 122625  
 T-Started 22:12 Std. By \_\_\_\_\_  
 T-Open 23:59 Acc. Chg: \_\_\_\_\_  
 T-Pulled 00:59 Other: \_\_\_\_\_  
 T-Out 02:25 Total: \_\_\_\_\_

**CHART PAGE**

This is a photocopy of the actual AK-1 recorder chart.





# TRILOBITE TESTING INC.

P.O. Box 362 • Hays, Kansas 67601

27559

## Test Ticket

Well Name & No. J Thompson #1 Test No. 3 Date 2-7-07  
 Company Blake Exploration Zone Tested Arbuckle  
 Address \_\_\_\_\_ Elevation 2266 KB 2261 GL \_\_\_\_\_  
 Co. Rep / Geo. Mike Davignon Rig Muffin #16  
 Location: Sec. 7 Twp. 9 Rge. 21 Co. Graham State Ks  
 Comment: \_\_\_\_\_ Release date / time: \_\_\_\_\_

Interval Tested 3800 — 3820 Initial Str Wt./Lbs. 52000 Unseated Str Wt./Lbs. 52000  
 Anchor Length 20 Wt. Set Lbs. 29000 Wt. Pulled Loose/Lbs. 89000  
 Top Packer Depth \_\_\_\_\_ Tool Weight 2000  
 Bottom Packer Depth 3800 Hole Size 7 7/8" Rubber Size 6 3/4"  
 Total Depth \_\_\_\_\_ Wt. Pipe Run \_\_\_\_\_ Drill Collar Run 30  
 Mud Wt. 9 LCM \_\_\_\_\_ Vis. 50 WL 6.8 Drill Pipe Size 4.5XH Ft. Run 3760  
 Blow Description L.F. weak 3/4" blow - flushed tool - Died in 20 min after flush  
Slid tool 6' to bottom

Recovery - Total Feet 10 GIP \_\_\_\_\_ Ft. in DC 10 Ft. in DP \_\_\_\_\_  
 Rec. 10 Feet of Mud w/ oil spots %gas \_\_\_\_\_ %oil \_\_\_\_\_ %water \_\_\_\_\_ %mud \_\_\_\_\_  
 Rec. \_\_\_\_\_ Feet of \_\_\_\_\_ %gas \_\_\_\_\_ %oil \_\_\_\_\_ %water \_\_\_\_\_ %mud \_\_\_\_\_  
 Rec. \_\_\_\_\_ Feet of \_\_\_\_\_ %gas \_\_\_\_\_ %oil \_\_\_\_\_ %water \_\_\_\_\_ %mud \_\_\_\_\_  
 Rec. \_\_\_\_\_ Feet of \_\_\_\_\_ %gas \_\_\_\_\_ %oil \_\_\_\_\_ %water \_\_\_\_\_ %mud \_\_\_\_\_  
 Rec. \_\_\_\_\_ Feet of \_\_\_\_\_ %gas \_\_\_\_\_ %oil \_\_\_\_\_ %water \_\_\_\_\_ %mud \_\_\_\_\_  
 BHT 98 °F Gravity \_\_\_\_\_ °API D @ \_\_\_\_\_ °F Corrected Gravity \_\_\_\_\_ °API  
 RW \_\_\_\_\_ @ \_\_\_\_\_ °F Chlorides \_\_\_\_\_ ppm Recovery \_\_\_\_\_ Chlorides 2600 ppm System

	AK-1	Alpine	Recorder No.	Test
(A) Initial Hydrostatic Mud		<u>1917</u> PSI	<u>6741</u>	<u>1100</u>
(B) First Initial Flow Pressure		<u>18</u> PSI	(depth) <u>3801</u>	Jars _____
(C) First Final Flow Pressure		<u>19</u> PSI	Recorder No. <u>13254</u>	Safety Jt. _____
(D) Initial Shut-In Pressure		<u>808</u> PSI	(depth) <u>3817</u>	Circ Sub _____
(E) Second Initial Flow Pressure		— PSI	Recorder No. _____	Sampler _____
(F) Second Final Flow Pressure		— PSI	(depth) _____	Straddle _____
(G) Final Shut-In Pressure		— PSI	<b>Initial Opening</b> <u>30</u>	Ext. Packer _____
(Q) Final Hydrostatic Mud		<u>1877</u> PSI	Initial Shut-In <u>30</u>	Shale Packer _____

TRILOBITE TESTING INC. SHALL NOT BE LIABLE FOR DAMAGED OF ANY KIND OF THE PROPERTY OR PERSONNEL OF THE ONE FOR WHOM A TEST IS MADE, OR FOR ANY LOSS SUFFERED OR SUSTAINED, DIRECTLY OR INDIRECTLY, THROUGH THE USE OF ITS EQUIPMENT, OR ITS STATEMENTS OR OPINION CONCERNING THE RESULTS OF ANY TEST. TOOLS LOST OR DAMAGED IN THE HOLE SHALL BE PAID FOR AT COST BY THE PARTY FOR WHOM THE TEST IS MADE.

Approved By \_\_\_\_\_

Our Representative Dan Rangle

Final Flow \_\_\_\_\_ Ruined Packer \_\_\_\_\_  
 Final Shut-In \_\_\_\_\_ Mileage 101 RT 126.2  
**T-On Location** 08:30 Sub Total: 1226.25  
 T-Started 08:48 Std. By \_\_\_\_\_  
 T-Open 10:50 Acc. Chg: \_\_\_\_\_  
 T-Pulled 11:50 Other: \_\_\_\_\_  
 T-Out 13:37 Total: \_\_\_\_\_

**CHART PAGE**

This is a photocopy of the actual AK-1 recorder chart.

