

JOHN O. FARMER, INC.

P.O. Box 352

Russell, KS 67665
(785) 483-3144

Drilling Contractor:

Distribution:

Presley Petroleum
Terry Marple
Gerald Furseth Revocable Trust
Penguin Petroleum
Robert Schmidt
Anthony Schmidt
Nancy Talbott
James Devlin Living Trust
Kirk Rundle
Aven Weavingring

Farrell C #1
1,550' FSL & 1,620' FWL
Sec. 27-9S-22W
Graham County, Kansas
2,370 'G.L.
2,375 'K.B.
(West Morel SW 3-D)

WW Drilling - Rig #6
Cell. (785)-259-6941
Toolpusher - Kyle Kinderknecht
Cell. (785)-259-2382
Geologist - Steve Murphy
Cell 620-639-3030

API #15-065-23,477-0000

TIGHT HOLE - DO NOT RELEASE INFORMATION

9/24/2008

MIRU, Spud at 1:45 pm. Drilled 217' of 12 1/4" hole, ran 5 Joints new 23#, 8 5/8" casing, set at 216' (tally 213.27'). Cemented w/ 150 sx Common, 3% CC, 2% Gel by Allied, cement did circulate.

9/25/2008

700', drilling

9/26/2008

2,290', drilling

9/27/2008

2,990', drilling

9/28/2008

3,540', circulate for samples

DST #1 3,525'-3,540' Plattsmouth

30"-30"-30"-30"

IF: BOB in 6 min., surface blow back on shut in died in 10 min.
FF: BOB in 8 min., surface blow back on shut in died in 10 min.

Rec: 780' MCW (20% M, 80% W) (Chl. 88K)

60' MCW (30% M, 70% W)

40' WCM (30%W, 70% M)

880' Total Fluid Recovery

FP: 141-269, 277-431#

SIP: 1,093-1,090#

HP: 1,613-1,662#

BHT: 115'

9/29/2008

3,640', DST #2

DST #2 3,620'-3,640' LKC C zone

30"-30"-60"-60"

IF: BOB in 17 min., .25" blow back on shut
FF: BOB in 23 min., 1" blow back on shut in

Rec: 20' Clean Oil (34' API)

110' Mud Cut Gassy Oil (5% G, 35% M, 60% O)

120' O&WCM (20% O, 30% W, 50% M)

250' Total Fluid Recovery

FP: 29-81, 89-122#

SIP: 439-447#

HP: 1,742-1,716#

BHT: 112'

9/30/2008

3,740' circulate for samples

DST #3 3,654'-3,690' (LKC D-F)

30"-30"-30"-60"

IF: BOB in 3 min., BOB in 9 min. on shut in
FF: BOB in 7 min., 9" blow back on shut in

Rec: 1200' Gas in Pipe

155' Gassy Oil (30% G, 70% O) (36' API)

360' Mud Cut Gassy Oil (30% G, 20% M, 50% O)

515' Total Fluid Recovery

FP: 36-143, 157-217#

SIP: 525-516#

HP: 1,741-1,717#

BHT: 111'

10/1/2008

4,020', drilling

Ran 98 jts of new 5 1/2"- 14# Casing, set at 4,058',
Pumped 10 bbls KCL flush and 500 gal. flow check followed
w/ 10 bbls KCL, Swift cemented top to bottom w/ 420 sx SMD,
good circulation throughout, 900# Pumping pressure, 1,400#
to land plug. Plug down at 1:30 AM, Released rig @ 3:30 AM

FINAL REPORT

	Clinton Oil Sandlin 1-X 2,086' FSL & 3,194' FEL 2,384 KB		Estim. from 3D Seismic	JOHN O. FARMER, INC. Farrell C #1 2,375			
				Sample		E-Log	
Anhydrite	1884	500		1874	501	1872	503
Topeka				3344	-969	3348	-973
Heebner	3579	-1195	-1195	3563	-1188	3563	-1188
Toronto	3600	-1216		3586	-1211	3585	-1210
Lansing	3617	-1233		3597	-1222	3600	-1225
Stark Sh				3785	-1410	3788	-1413
B/KC	3843	-1459		3821	-1446	3824	-1449
Marmaton	3875	-1491					
Arbuckle				3964	-1589	3965	-1590
RTD	3936	-1552		4060	-1685		
LTD						4062	-1687

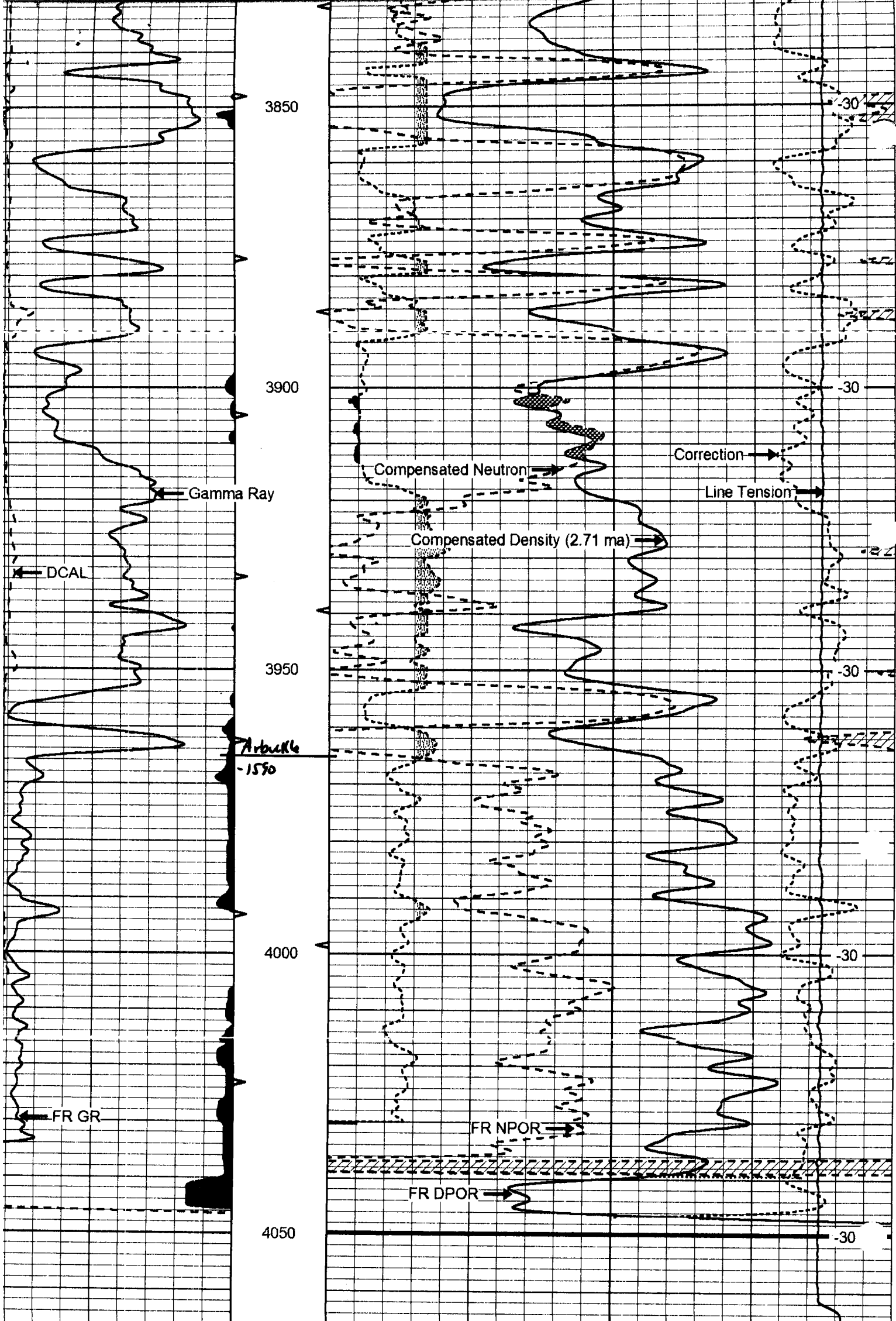


Dual Compensated Porosity Log

TAL LOG 785 625-3656

No.	Company John O. Farmer, Inc. Well Farrell 'C' No. 1 Field Wildcat County Graham State Kansas					
	Location 1550' FSL & 1620' FWL Sec: 27 Twp: 9S Rge: 22W				Other Services DIL/MEL Elevation K.B. 2375 D.F. G.L. 2370	
	ent Datum asured From Measured From	Ground Level Kelly Bushing Kelly Bushing	5	Elevation 2370 Ft. Above Perm. Datum		
		10/01/2008				
	umber	One				
	og	CNL / CDL				
	Driller	4060				
	.ogger	4062				
	Logged Interval	4042				
	ogged Interval	3300				
	uid In Hole	Chemical				
	ity, PPM CL	4,000				
	sity	9.2				
	il	Full				
	ec. Temp. F	119				
	ng Rig Time	3 Hours				
	ent -- Location	10	Hays			
	ed By	Jason Wellbrock				
	sed By	Steve Murphy				
	Borehole Record			Casing Record		
	Bit	From	To	Size	Wgt.	From
	12.25	0	217	8.625	23#	0
	7.875	217	TD			

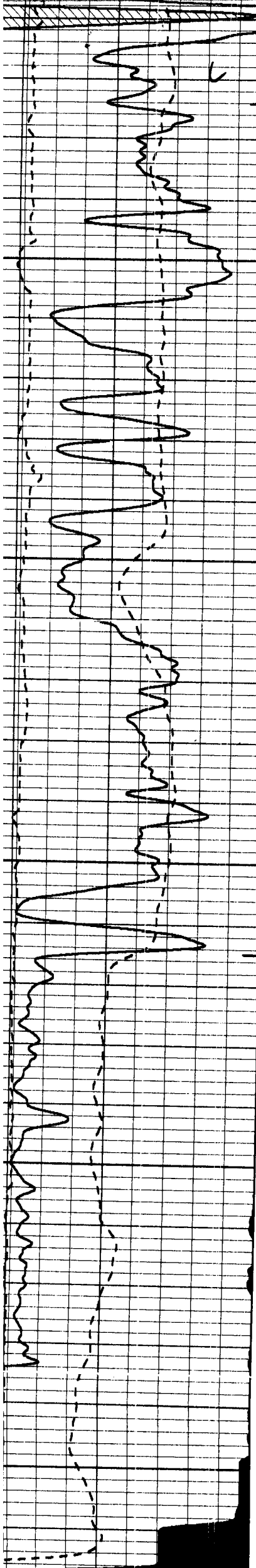
Watney



Gamma Ray (GAPI)	150
Caliper (in)	16

30	Compensated Neutron (pu)	-10		
30	Compensated Density (2.71 ma) (pu)	-10		
2.625	DGA	3.425 -0.25	Correction (g/cc)	0.25
10000		Line Tension (lb)		0

LSPD
(ft/min)



BKC
-1449

3850

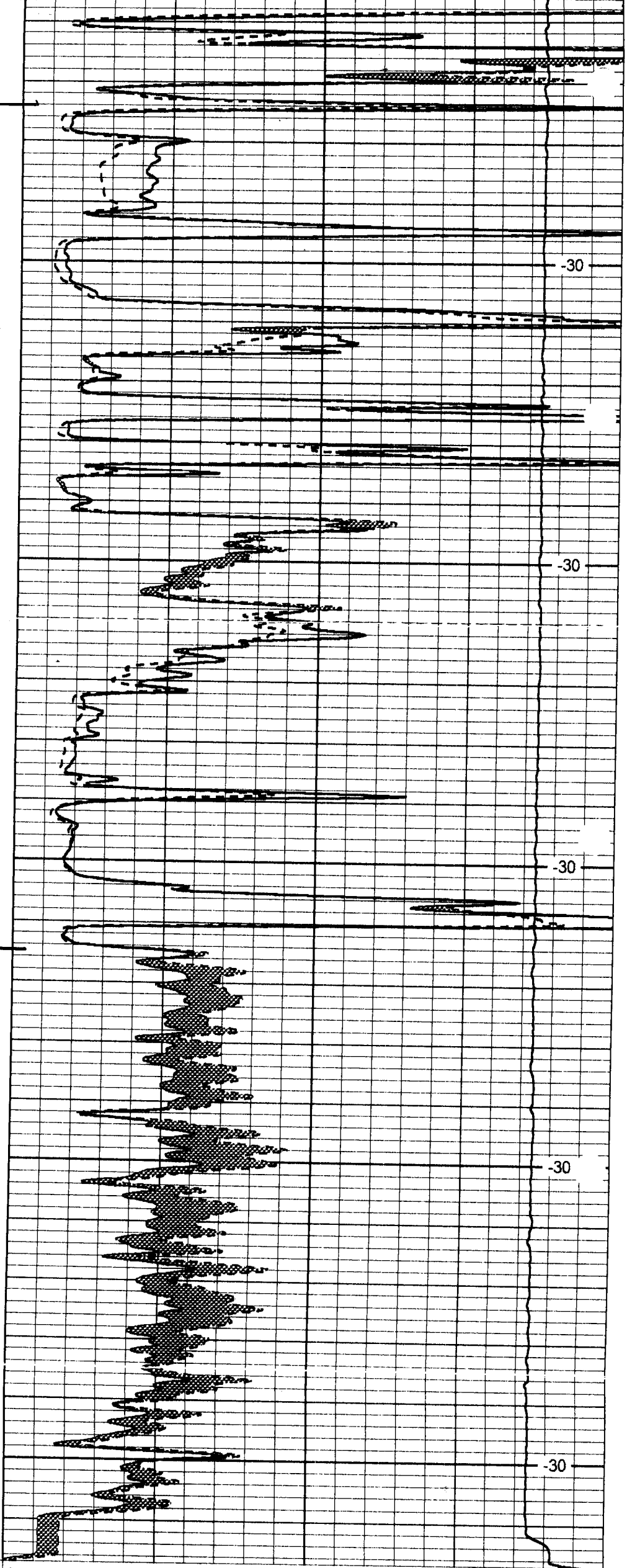
3900

3950

Arbuck
-1590

4000

4050



-30

-30

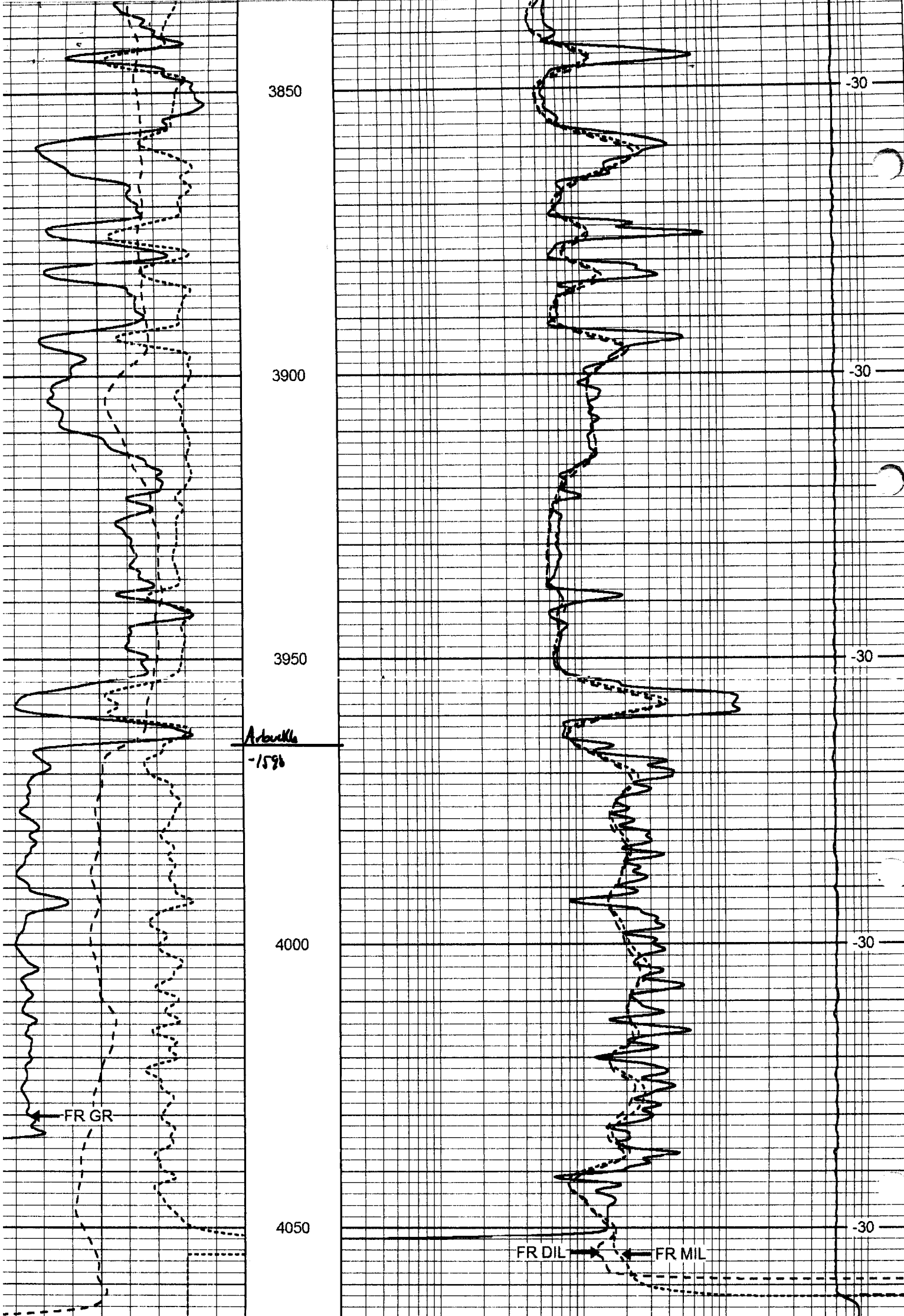
-30

-30

-30

Gamma Ray (GAPI)	150
MCAL (in)	16
Mud Cake (in)	7.875

0	Micro Inverse 1 X 1 (Ohm-m)	
0	Micro Normal 2" (Ohm-m)	40
10000	Line Weight (lb)	



Gamma Ray (GAPI)	150
RXO/RT	40
SP (mV)	0

0.2	Deep Resistivity (Ohm-m)	2000
0.2	Medium Resistivity (Ohm-m)	2000
0.2	Shallow Resistivity (Ohm-m)	2000
10000	Line Tension (lb)	0

LSPD
(ft/min)