

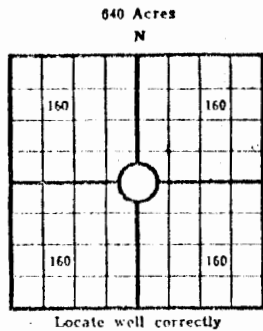
KANSAS CORPORATION COMMISSION

WELL RECORD

36-9-22W

(Mail to Kansas Geological Survey, 4150 Monroe Street, Wichita, Kansas 67209)

API #15-065-20,529



Lease Name: Wolfe Well No. 4
 Well Located: NE NW SW Sec.
SEC 36 TWP 9S RGE 22W
 Operator: Murfin Drilling Company
 Address: 617 Union Center, Wichita, Kansas 67202
 Elevation: Ground 2343 D.F. 2345 K.B. 2348
 Type Well: (Oil, gas, dry hole) Input

Drilling Commenced: 2/23 1972 Drilling Completed: 3/1/ 1972
 Well Completed: 19 Total Depth 3825
 Initial Production: Injection well

Casing Record

Size: 8 5/8" Set at 208' Size: _____ Set at _____
 Size: 5 1/2" Set at 3822' Size: _____ Set at _____

Liner Record

Size: _____ Set from _____ To _____

Cementing

Casing Size	Sacks	Type Cement and Additives
<u>8 5/8"</u>	<u>150 sx</u>	<u>Sunset</u>
<u>5 1/2"</u>	<u>225 sx</u>	<u>50/50 Poz. 6% Gilsinite</u>

Perforations

Formation Perforated Interval and Number Shots

SEE REVERSE SIDE OF SHEET

Electric Log Run (Show type log and depths covered)

Great Guns R. A. Guard Log 0-3825'

Show Drill Stem Tests,
Well Stimulation and
Production Tests

Formation Top Bottom

LOG TOPS

ANHYDRITE	1826	1863
TOPEKA	3303	3528
HEEBNER	3528	3532
TORONTO	3552	3562
LANS-KC	3568	3795
LTD	3822	

DST #1 3561-80, open 1 hr, wk blow 30",
rec 90" Mdy SW, BHP 708-685#/30", FP
46-92#.

DST #2 3597-3665', 1 hr, wk 25" blow,
rec 70' Mdy SW w/spks oil, BHP 652-629#/30",
FP 69-104#

DST #3 3691-3740, open 1 hr, wk 1 hr blow,
rec 60' gas, 85' oil cut mud, BHP 369-357#/30",
FP 35-58#

Ran collar & cement log: Top cement 3320: Perf
10 shots 3732-36; 3709 1/2-13 1/2: 500 GA:

Tested 1st hr	2.75 BF	54% wtr
2nd hr	3.50 BF	50% wtr
3rd hr	2.75 BF	60% wtr
4th hr	2.50 BF	60% wtr

Perf 4 shots per foot 3668-71: 750 GA:

Tested 1st hr	4.75 BF	75% wtr
2nd hr	4.50 BF	72% wtr

COTB 3784: Swb 3.75 BF (68% wtr):

Tested		
1st hr	3.50 BF	75% wtr
2nd hr	2.75 BF	72% wtr
3rd hr	2.25 BF	72% wtr
4th hr	2.00 BF	72% wtr

1750' FIH: Pulled retrievable plug @ 3600'
Set pkr 3681: Set DA 50 plug: Pulled pkr:
500 GA; 1500 GA:

Tested:		
1st hr	11 BFPH	90% wtr
2nd hr	9.5 BFPH	90% wtr
3rd hr	7.5 BFPH	90% wtr
4th hr	6.5 BFPH	90% wtr
5th hr	6 BFPH	90% wtr

Will complete as an injection well.



120	Sand
1826	Shale
1865	Anhydrite
2410	Shale
3270	Shale & Lime
3307	Shale
3825	Lime

Lb 0170

503 East Murdock
Wichita, Kansas

WELL LOG

15-065-20729

MAY 19 1972

COMPANY

Murfin Drilling Co.

SEC. 36 T. 9S R. 22W

LOG. NE NW SW

FARM

Wolfe

NO.

4

RIG. NO.

15

TOTAL DEPTH

3825 feet

COUNTY

Graham

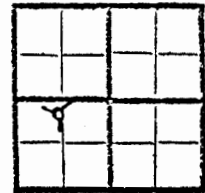
KANSAS

COMM.

2/23/72

COMP.

3/1/72



CONTRACTOR

Murfin Drilling Co.

CASINO

20

10

15

8 5/8" @ 208'w/150 sx

ELEVATION

2348 RB

12

6

PRODUCTION

DRY

13

5 1/2" @ 3822' w/225 sx

FIGURES INDICATE BOTTOM OF FORMATIONS

120	Sand
1826	Shale
1865	Anhydrite
2410	Shale
3270	Shale & Lime
3307	Shale
3825	Lime

Log Tops

SC	1826
B SC	1863
TOP	3303
HEEB	3528
TOR	3552
LANS	3568
BKC	3795
TD	3822



State of Kansas

County of Sedgwick

ss: