

IMPORTANT
Kans. Geo. Survey request
samples on this well.

KANSAS DRILLERS LOG

S. 23 T. 9 R. 23^E_W
Loc. 60' W/C NE SW NE
County Graham

API No. 15 — 065 — 20,918
County Number

Operator
Barnett Oil, Inc.

Address
1625 Vickers KSB&T Building Wichita, Kansas 67202

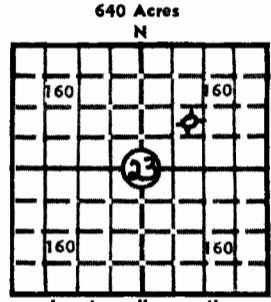
Well No. #1 Lease Name Denning

Footage Location
990 feet from (S) line 930 feet from (W) line of NE/4

Principal Contractor Murfin Drilling Co. Geologist R. B. Gebhart Jr.

Spud Date March 25, 1977 Total Depth 3940' P.B.T.D.

Date Completed March 31, 1977 Oil Purchaser



Elev.: Gr. 2382'

DF 2384' KB 2387'

CASING RECORD

Report of all strings set — surface, intermediate, production, etc.

Purpose of string	Size hole drilled	Size casing set (in O.D.)	Weight lbs/ft.	Setting depth	Type cement	Sacks	Type and percent additives
Surface	12 1/4"	8 5/8	28#	223	Common	150	2% gel + 3% Ca. Cl.

LINER RECORD

PERFORATION RECORD

Top, ft.	Bottom, ft.	Sacks cement	Shots per ft.	Size & type	Depth interval

TUBING RECORD

Size	Setting depth	Packer set at

ACID, FRACTURE, SHOT, CEMENT SQUEEZE RECORD

Amount and kind of material used	Depth interval treated

INITIAL PRODUCTION

Date of first production		Producing method (flowing, pumping, gas lift, etc.)			
RATE OF PRODUCTION PER 24 HOURS	Oil bbls.	Gas MCF	Water bbls.	Gas-oil ratio	CFPB
Disposition of gas (vented, used on lease or sold)			Producing interval(s)		

INSTRUCTIONS: As provided in KCC Rule 82-2-125, within 90 days after completion of a well, one completed copy of this Drillers Log shall be transmitted to the State Geological Survey of Kansas, 4150 Monroe Street, Wichita, Kansas 67209. Copies of this form are available from the Conservation Division, State Corporation Commission, 3830 So. Meridian (P.O. Box 17027), Wichita, Kansas 66217. Phone AC 316-522-2206. If confidential custody is desired, please note Rule 82-2-125. Drillers Logs will be on open file in the Oil and Gas Division, State Geological Survey of Kansas, Lawrence, Kansas 66044.

Operator Barnett Oil, Inc.		DESIGNATE TYPE OF COMP.: OIL, GAS, DRY HOLE, SWDW, ETC.: Dry Hole
Well No. 1	Lease Name Denning	
S 23 T 9 R 23 W		

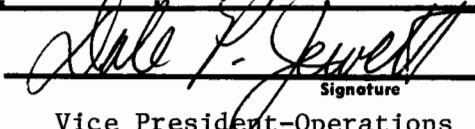
WELL LOG

Show all important zones of porosity and contents thereof; cored intervals, and all drill-stem tests, including depth interval tested, cushion used, time tool open, flowing and shut-in pressures, and recoveries.

SHOW GEOLOGICAL MARKERS, LOGS RUN, OR OTHER DESCRIPTIVE INFORMATION.

FORMATION DESCRIPTION, CONTENTS, ETC.	TOP		NAME	DEPTH
No log				
Anhydrite	1987'	(+ 400)		
Base Anhydrite	2021'	(+ 366)		
Topeka	3450'	(-1063)		
Heebner	3667'	(-1280)		
Toronto	3690'	(-1303)		
Lansing	3703'	(-1316)		
Base Kansas City	3928'	(-1541)		
<p>DST #1: 3766' -3781' (30"-30"-30"-30") Weak blow 20" & died Flushed tool, no help. Rec. 15' of mud with spots of oil I.F.P. = 17#-17# I.S.I.P. = 17# F.F.P. = 17#-21# F.S.I.P. = 21#</p> <p>DST #2: 3846' -3867' (30"-30"-30"-30") Weak blow 15" Flushed too, no help Recovered 20' of mud I.F.P. = 21#-21# I.S.I.P. = 27# F.F.P. = 21#-27# F.S.I.P. = 27#</p>				

USE ADDITIONAL SHEETS, IF NECESSARY TO COMPLETE WELL RECORD.

Date Received	 Signature
	Vice President-Operations Title
	April 12, 1977 Date