

# GEOLOGICAL REPORT

## DRILLING TIME AND SAMPLE LOG

COMPANY Sandlin Oil Corporation  
 LEASE Clark #1  
 FIELD Shiloh South  
 LOCATION 40' E of SE NE NW  
 SEC 12 TWP 9s RGE 25W  
 COUNTY Graham STATE Kansas

CONTRACTOR Anderson Drilling Rig #2  
 SPUD 2-23-07 COMP 3-3-07  
 SAMPLES SAVED FROM 3600 TO RTD.

ELEVATION  
 KB 2511'  
 DF 2509'  
 GL 2506'  
 Depths Measured From  
 Log # 18 Drilling # 18

CASING  
 Surface 8 5/8" @ 202'  
 Production 5 1/2"

ELECTRIC LOGS  
ELI

FORMATION	SAMPLE	E. LOG	DATUM	FORMATION TOPS AND STRUCTURAL POSITION			
				A	B	C	D
Anhydrite	2197	2194	+ 317				
Base Anhydrite	2234	2238	+ 283				
Tapoka	3580	3576	-1065				
Hebner	3793	3789	-1278				
Toronto	3812	3813	-1302				
Lansing	3832	3826	-1315				
Base Kansas City	4054	4047	-1536				
Total Depth	4090	4089	-1578				

### REFERENCE WELLS

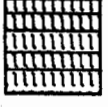
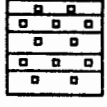



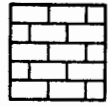
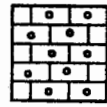
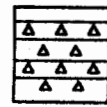
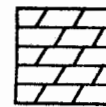
A Time Petroleum Co. #2 Clark C. SE NE NW Sec. 12-9s-25W  
 B Time Petroleum Co. #1 Clark C. NW NW NE Sec. 12-9s-25W  
 C  
 D  
 Best Available Copy

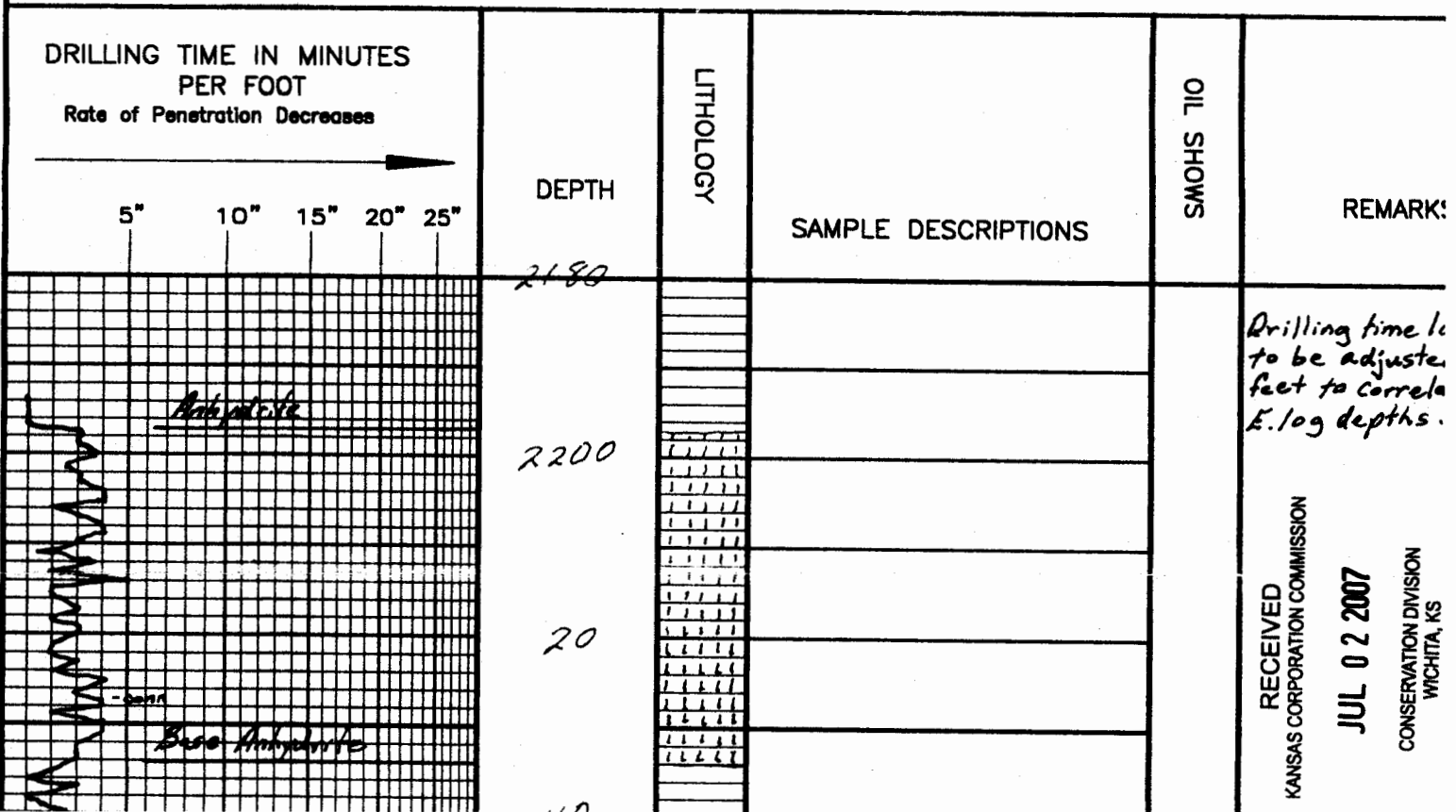
Best Available Copy

REMARKS This well ran 6 feet higher on the Lansing top, by E. log measurements, than the nearby reference wells. After reviewing the suite of open hole logs and considering the high structural position of this well, it was decided to cement production casing to further test the well. The following zones should be tested: 4034'-40; 4018'-21'; 3999'-4002'; 3963'-66'; 3874'-76'; 3861'-63'; 3829'-34'.

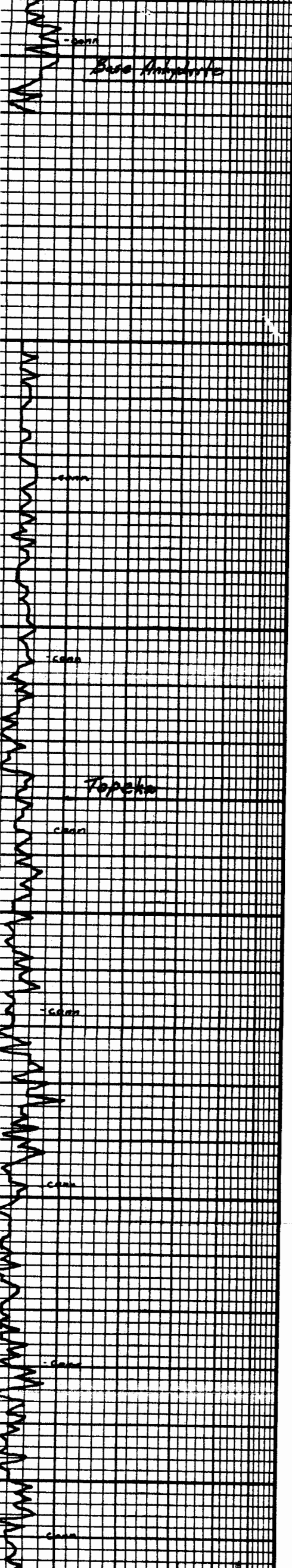
Richard B. Bell  
3-4-07

### LEGEND

								
Anhydrite	Salt	Sandstone	Shale	Carb sh	Limestone	Ool. Lime	Chert	Dolomite



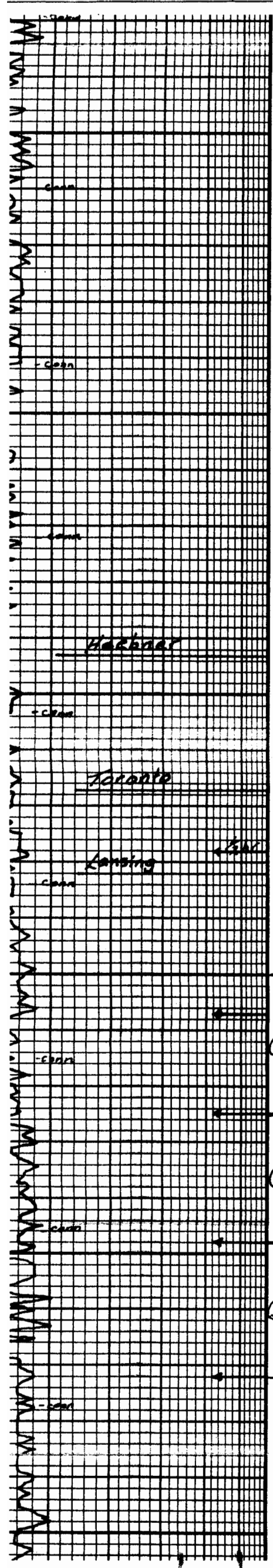
RECEIVED  
 KANSAS CORPORATION COMMISSION  
 2007 JUN 20  
 CONSERVATION DIVISION  
 WICHITA, KS



20	
40	
3500	
20	
40	
60	
80	Sh: gry, brn, grn
	LS: wh-tn gry fcln - sli: fslf ppφ - incln φ N.S.O.
3600	LS: wh-tn fcln - sli: suc fcln N.S.O. Sh: brn, gry, grn LS: wh-tn fcln sli: ool incln φ N.S.O.
20	Sh: gry, brn, grn LS: wh-tn sli: sky fcln - sli: suc ppφ - incln φ N.S.O. LS: tn gry fslf mt/d dns
40	aa LS: tn gry fcln - sli: fslf incln φ - sli: gry φ N.S.O. Δ w sh: blk, brn, gry
60	LS: wh-tn fcln - sli: suc - sli fslf ppφ - incln φ N.S.O. Δ w wh-tn
80	Sh: blk. Carr. LS: gry fslf dns
3700	v. shly: gry, grn, brn, bla Tf pyrite shly ss - conc fr ga glauc spks pyrite spks LS: wh-tn gry fcln - fslf incln φ N.S.O.

samples are lag:

RECEIVED  
KANSAS CORPORATION COMMISSION  
JUL 02 2007  
CONSERVATION DIVISION  
WICHITA, KS



80	LS: shibln, gry, brn
	sh. Blk. Carb.
	LS: gry fsf dns
3700	LS: shly: gry, grn, brn, blk Fr pyrite shly ss conc f a ga glauc spks Pyrite spks
	LS: wh-tn. gry fcln-fsf incln $\phi$ N.S.O.
20	LS: wh-tn fcln-fsf incln $\phi$ frab. N.S.O. $\Delta$ wh-tn fsf
	shly: orn, gry, grn
40	LS: wh-tn-lt. gry fcln-fsf dns. $\Delta$ wh-tn Fr blk Carb. sh
	LS: wh-tn fcln incln $\phi$ N.S.O.
60	LS: wh-tn-lt. gry fcln - sli suc frab - sli: Chy N.S.O. $\Delta$ wh
	LS: wh-tn-gry suc. frab - fcln sli pyritic N.S.O. $\Delta$ wh-tn
80	
3800	shly: gry, brn, grn Blk Carb. sh
	LS: wh-tn gry fcln dns
	shly: gry, brn, grn
20	LS: wh-tn gry fcln - sli fsf incln $\phi$ N.S.O. No cut No floor $\Delta$ wh-tn
	sh: brn, gry, grn
40 "A"	LS: wh-tn - lt. gry fcln - sli fsf sli: chy frab $\phi$ fr incln $\phi$ VRT pr lt. oil stn. Lt. Cat VRT rainbow show RT F.O.
60	sh: brn, gry, grn, blk
"B"	LS: wh-tn sli: chy - fcln pp - incln No VRT at spk 0 stn N.F.O. No odor $\Delta$ wh-tn
80	LS: wh-tn fcln - sli fsf $\phi$ - 19y $\phi$ Lt. spk 0 stn N.F.O. No odor $\Delta$ wh-tn
3900	LS: wh-tn - lt. gry fcln dns N.S.O. sh: brn, gry, grn LS: m-gry fcln-fsf dns mtd
"E/F"	LS: wh-tn fcln - sli fsf $\phi$ - 19y $\phi$ Lt. spk 0 stn Fr. pp F.O. Fr. odor $\Delta$ wh-tn fsf Fr. oil $\phi$ pr Lt 0 stn sh: brn, gry, grn
20	LS: wh-tn sli: chy - suc. fcln pp - incln N.S.O.
"G"	
40	LS: ea mostly dns
	LS: wh-tn-lt. gry fcln dns Fr pyrite

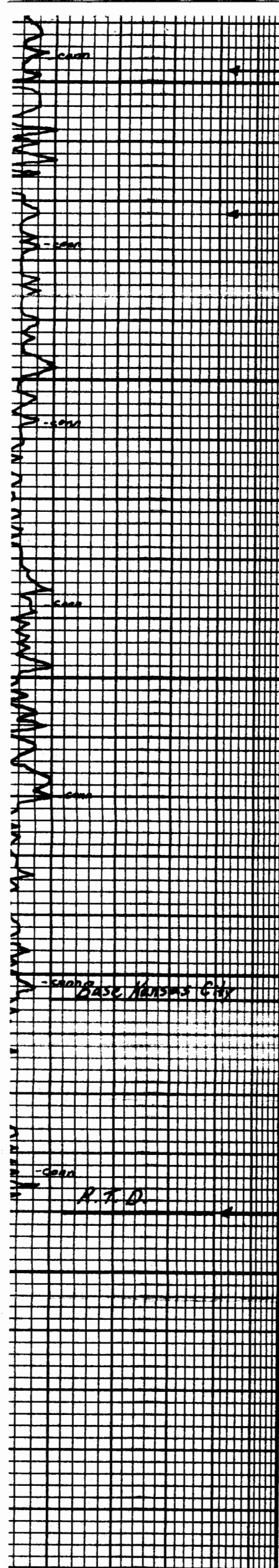
RECEIVED  
KANSAS CORPORATION COMMISSION  
JUL 02 2007  
CONSERVATION DIVISION  
WICHITA, KS

Board 3896.69  
Strap 3896.39  
Diff: .30

Trilobite Testing

DST #1 3850'-3875'  
15-60-15-60  
IF: B.O.B. in 3 min.  
ISI: wk sur blow incr. to 5  
FF: B.O.B. in 6 min.  
FSI: incr. to 3" decr. to 1"  
Recovery: 350' G.I.P.  
40' C.O.  
90' HDGM 30% O, 70% M  
60' SOCWM 5% O, 30% W, 65% M  
60' MW 95% W, 5% M  
Hyd: 1847-1831#  
FP: 29-74/85-130#  
BHP: 1034-1018#  
BH Temp: 118°F  
Chlorides: system: 3000ppm  
Rec: 17,000ppm

DST #2 3875'-3896'  
20-60-15-60  
IF: B.O.B. in 4 min.  
ISI: wk sur blow for 45 min.  
FF: B.O.B. in 5 min.  
FSI: V.wk blow after 20 min  
Recovery: 120' G.I.P.  
5' C.O.  
180' MW 50 85% W, 15% M  
355' Wtr.  
Hyd: 1874-1824#  
FP: 32-170/179-265#  
RD: 873-014#



3900	"D"	LS: tn-lt. gr. fcln dns n.s.o. sh: brn, gry, grn LS: tn-gry fcln-fsif dns mtd
20	"E" "F"	LS: tn fcln-sli: fsif oil o-vgy lt. sptd o stn Tr. pp f.o. fr. odor dark tn fsif Tr. oil o pr lt o stn sh: brn, gry, grn
40	"G"	LS: wh-tn sli: cky-suc. fcln ppf-incln n.s.o. LS: ea mstly dns LS: wh-tn-lt. gry fcln dns Tr. pyrite
60	"H"	LS: ea dty wh-tn-gry shly: brn, gry, grn Tr. soft blk carb sh LS: wh-tn sli: cky. fcln Tr. oil o Tr sli: vgy o lt. fr. sptd o stn fr. fully diss oil Tr. lt scty F.O. Tr. asph res no odor sh: gry, brn
4000	"I"	LS: wh-tn fcln-sli: fsif-sli: cky mly fr. sptd o stn pr incln o Tr. suc friab w/lt. scty N.E.O. No odor
20	"J"	LS: wh-tn sli: cky-fcln oil o-vgy rainbow o show PPFO. blk tury stn fr. odor sh: gry, brn
40	"K"	LS: wh-tn cky-fcln sli: oil- incln o fr sptd o stn fully diss oil fr. odor sh: gry, brn
60	"L"	LS: tn-sli: yel fcln-sli: fsif incln o lt sptd o stn Tr. vgy o w/blk thick o stn Tr. asph stn
80		v. shly: brn, gry, grn
4100		shly: brn, gry, grn

YF: 27-17; 05-10  
 BHP: 1034-1018#  
 BHTemp: 118°F  
 Chlorides: system: 3000ppm  
 Rec: 17,000ppm  
 DST# 2 3875-3892  
 20-60-15-60  
 IF: B.O.B. in 4 min.  
 ISI: wk sur blow for 45 min  
 FF: B.O.B. in 5 min.  
 FSI: v wk blow after 20 min  
 Recovery: 120' G.I.P.  
 5' CO  
 180' MW 50 85%W, 15%N  
 355' wtr.  
 Hyd: 1874-1824#  
 FP: 32-170/179-265#  
 BHP: 873-864#  
 BHTemp: 122°F  
 Chlorides: system: 3000ppm  
 Rec: 7,000ppm  
 DST# 3 3898-3922  
 15-60-30-60  
 IF: B.O.B. in 12 min  
 ISI: wk sur blow for 25 min  
 FF: B.O.B. in 15 min.  
 FSI: wk sur blow for 21 min.  
 Recovery:  
 30' v soc w m 27.0, 20%W,  
 78% m  
 120' w m 40%W, 60% m  
 120' MW 95%W, 5% m  
 Hyd: 1901-1874#  
 FP: 14-55/59-137#  
 BHP: 1062-1047#  
 BHTemp: 121°F  
 Chlorides: sys: 3000ppm  
 Rec: 40,000ppm  
 RECEIVED  
 KANSAS CORPORATION COMMISSION  
 JUL 02 2007  
 CONSERVATION DIVISION  
 WICHITA KS